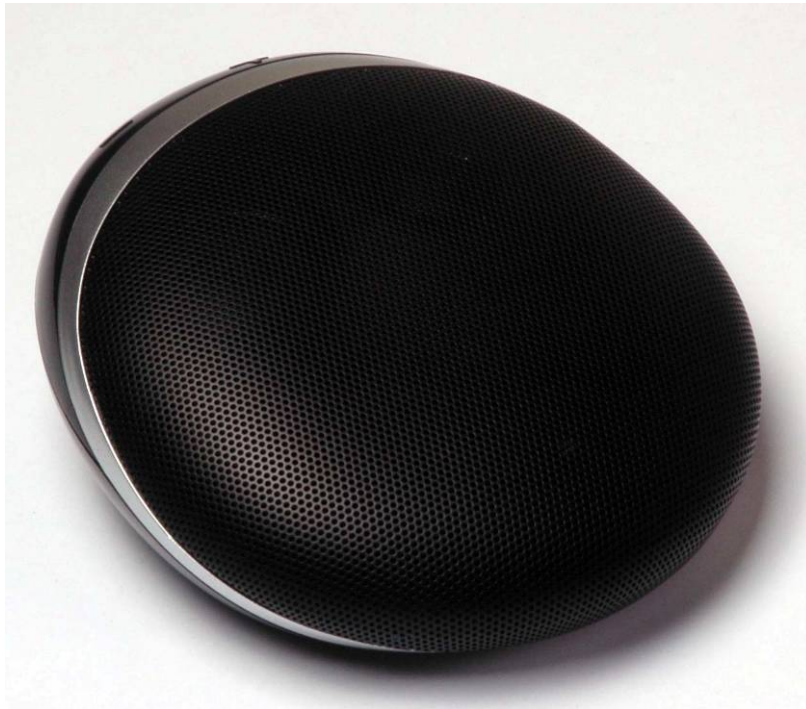
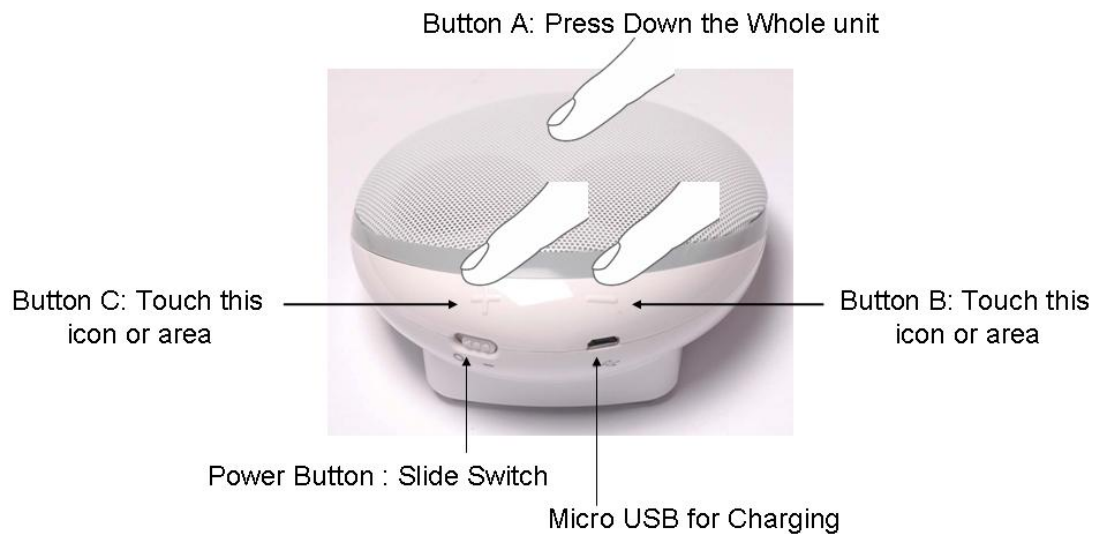


**Feature:**

- Bluetooth ver 2.1 + EDR with Special Audio Algorithm and DSP Processor for clean, best-in-class wireless stereo sound
- Two 35 mm full range drivers deliver superb music fidelity
- Passive Woofer Radiator
- Rechargeable Lithium-ion battery for up to 4 hours of playtime
- Convenient charging with USB charging cable



Button Location:



### 1) Anatomy

Button (in Bluetooth Music):

- A: Play/Pause
- B: Volume -
- C: Volume +

Button (during the phone call):

- A (during Ringing): Answer Call (Short press) / Reject Call (Long press)
- A (during the call): End of Call (Short press) / Toggle between Phone (Long Press)
- B: Volume -
- C: Volume +

Button (in General without Bluetooth connection):

- A: Entry Pairing mode (Long pressing)

Button (in Aux-in Music):

- A: Entry Pairing mode (Long Pressing)

### 2) Power up PF306

- Charge up PF306 whenever it is needed by plug into the wall charger or by computer via the USB cable
- Make sure the Slide button on the "ON" position

### 3) Pairing to PF306

- Select a BT 2.0 or above device (mobile phone or music player) and turn on BT connection
- Activate your BT device to the searching mode (new device searching).

- Press Down and hold the speaker until the front Grid flashing in BLUE/RED and hear the “Do Do” Sound, PF306 has 3 mins (searchable time) for your BT device to pair with.
- <<PF306>> will be displayed in your BT device and select it for pairing. “0000” is the pairing code if necessary. (Pairing code is not necessary for the iPhone, iPod , and iPad)
- Beep sound will be given when PF306 is successfully paired and stop flashing
- Double check with your BT device to see “PF306” is connected.

***Remark: Pairing steps are for 1st time connection, automatic connection is allowed on most BT devices***

***Remark: PF306 will also stop flashing with a different sound to indicate pairing failure after the 3mins.***

### **5) Listening to PF306**

- Stay connected to PF306 via BT, repeat the pairing step if it has been disconnected
- Select music to play in BT device
- Press Down the unit for Play / Pause
- Touch embossed “+” or “-“icon to adjust volume level or adjust it from your BT device
- Slide the Button at the back at “OFF” position to switch off

### **6) Talking via PF306**

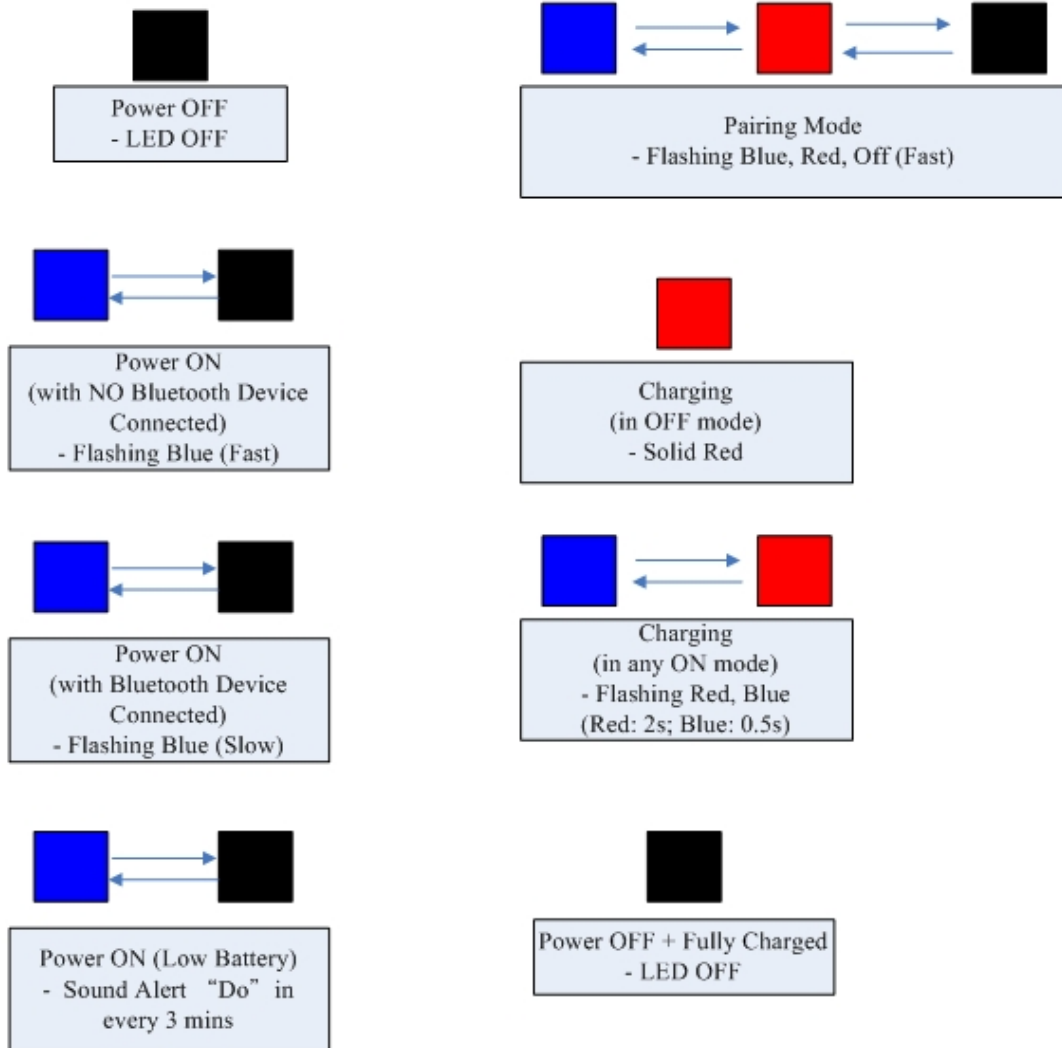
***Remarks: Only available on BT mobile with HFP/HSP***

- Press Down the unit for answering a call
- Press Down & hold the unit for rejecting the call
- Press Down to hang up when the call finish
- Press Down & hold the unit during the call to switch between PF306 and mobile
- Double Press Down the unit to answer a call from 3rd party

## 7) Front Logo Light indicator



This Lighting Effect will be inside the Metal Grill on the Top



## 8) Specifications

- Total 5W output (2.5W / Channel)
- Full-Range (35mm) driver / Channel + Passive Radiator
- Distortion  $\leq 10\%$
- S/N ratio:  $>75\text{dB}@1\text{W}$
- Frequency Response: 200Hz – 15k Hz
- Li-ion Batt: 750mAh

- Playtime: 4 hours in 80% Volume
- Recharging Time: 3 hours
- (Optional) Power Adaptor: 5V DC @ 700mA

**9) Compatibility (Bluetooth Device)**

- BT 2.1 or above device with A2DP / AVRCP / HFP / HSP

**10) Trouble Shooting**

Sound not Clear or no Sound	<ul style="list-style-type: none"> <li>• Please check PF306 or BT device Volume Level</li> </ul>
Playing Music Not Transfer from BT device to PF306	<ul style="list-style-type: none"> <li>• Make sure your BT device has A2DP</li> <li>• Check if both devices are connected</li> <li>• Re-Power up the PF306 for auto connection with your BT device</li> </ul>
LED No Power	<ul style="list-style-type: none"> <li>• Make sure PF306 is fully charged</li> </ul>
Sound is Too small / Too much distortion	<ul style="list-style-type: none"> <li>• Adjust the Volume Level of PF306 or BT device</li> </ul>
Phone call Not Answer by PF306	<ul style="list-style-type: none"> <li>• Make sure your mobile has HSP / HFP</li> <li>• Check if both devices are connected</li> <li>• Re-Power up the PF306 for auto connection with your BT device</li> </ul>
No Music Resume after hanging up a call	<ul style="list-style-type: none"> <li>• Press Play to resume music</li> </ul>
No Music Control by PF306	<ul style="list-style-type: none"> <li>• Make Sure your BT device has AVRCP</li> </ul>

Important Information Required By the FCC the Manufacturer is not responsible for any radio or TV interference caused by unauthorized modifications to this equipment. Such modifications could void the user's authority to operate the equipment

**Appendix:**

Button Name

Current Condition

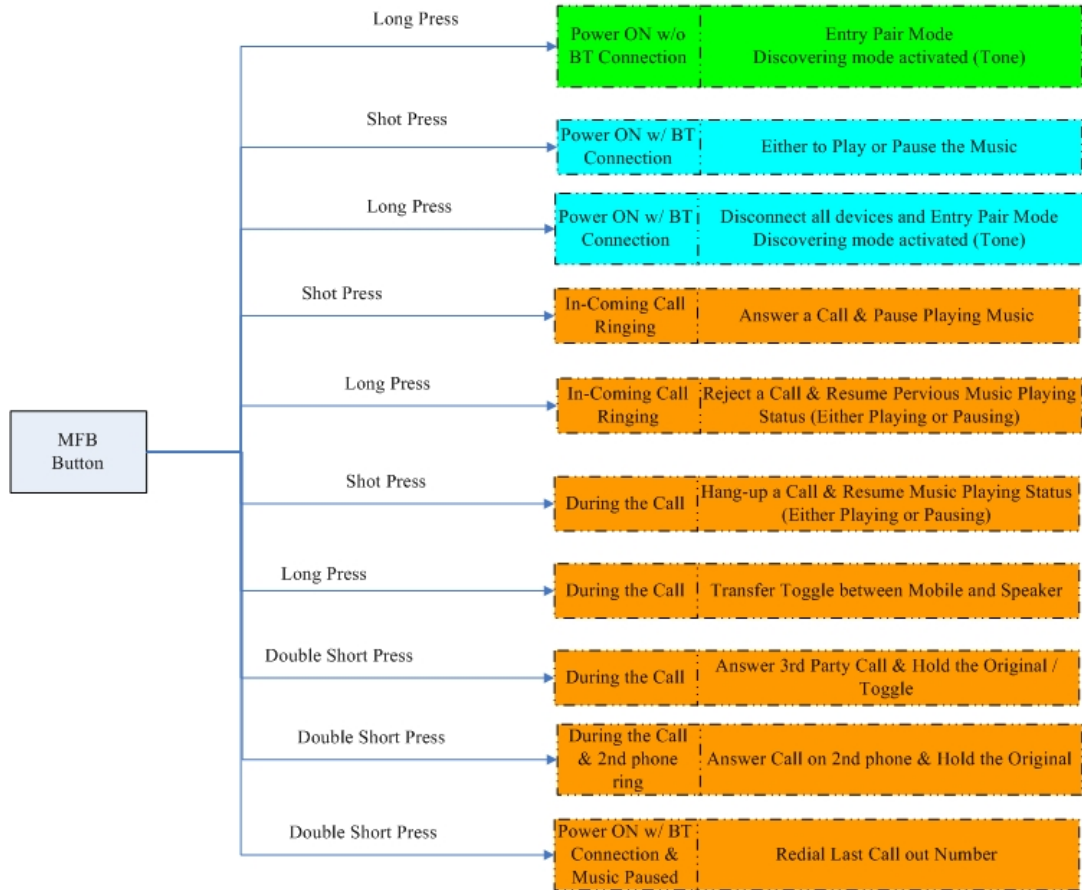
Response of Bluetooth Speaker & Mobile

# Plastoform

BlueTray (PF306)  
Key Pressed  
Actions Flow (r02)

\* Related to Keys:  
- MFP button (on unit)

Multi-Function Key Operation

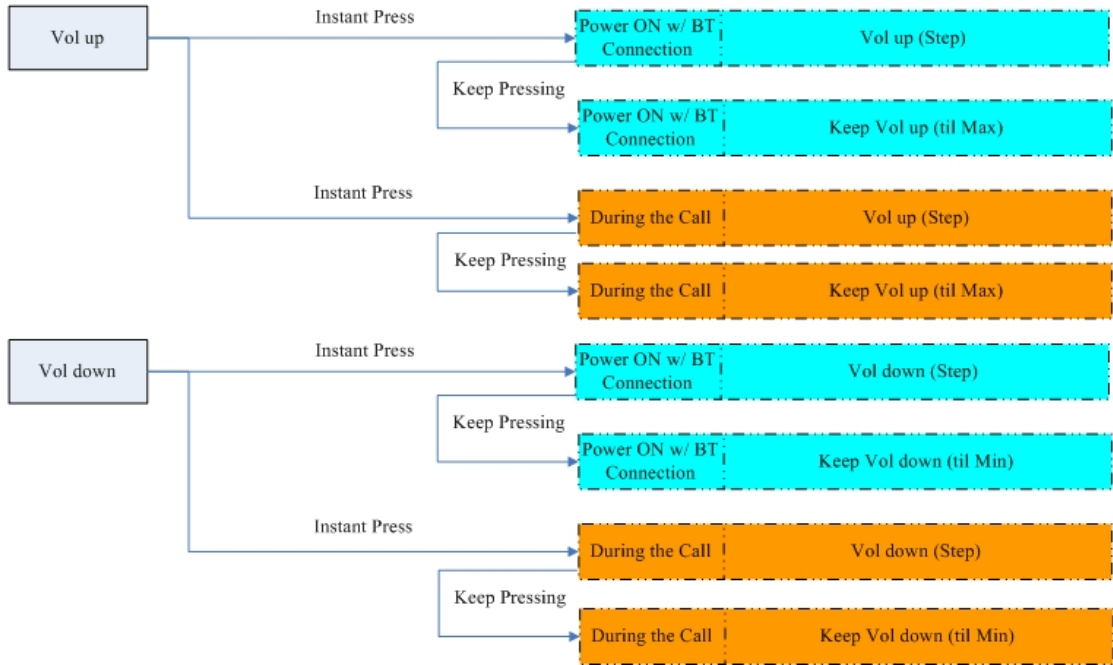


# Plastiform

BeTray (PF306) Key Pressed  
Actions Flow-2 (r04)

\* Related to Keys:  
 - Volume Up (on unit)  
 - Volume Down (on unit)  
 - MFP Button (on unit)

\*\* Volume Level should be same for the  
 BT Music and Phone Call



FCC Statement:

This device complies with part 15 of the FCC Rules. Operation is subject to the following two conditions: (1) This device may not cause harmful interference, and (2) this device must accept any interference received, including interference that may cause undesired operation.

This equipment has been tested and found to comply with the limits for a Class B digital device, pursuant to part 15 of the FCC Rules. These limits are designed to provide reasonable protection against harmful interference in a residential installation. This equipment generates, uses and can radiate radio frequency energy and, if not installed and used in accordance with the instructions, may cause harmful interference to radio communications. However, there is no guarantee that interference will not occur in a particular installation. If this equipment does cause harmful interference to radio or television reception, which can be determined by turning the equipment off and on, the user is encouraged to try to correct the interference by one or more of the following measures:

- Reorient or relocate the receiving antenna.
- Increase the separation between the equipment and receiver.
- Connect the equipment into an outlet on a circuit different from that to which the receiver is connected.
- Consult the dealer or an experienced radio/TV technician for help.

Caution: Any changes or modifications not expressly approved by the party responsible for compliance could void the user's authority to operate the equipment.