

# Manual

Product Name: Bluetooth Key Finder  
Model Number: BeSafe

## PRODUCT OVERVIEW

### **1.1. Critical Success Factor (Descending Order):**

#### **1) Material Cost**

#### **2) Performance and Feature:**

- i) Bluetooth 4.0
- ii) App on iOS and Android Devices

#### **3) Schedule:**

- i) End of Sept 2012

#### **4) Outlook**

- i) Thickness less than 4mm

### **1.2. Product Brief**

- Operated by CR2032 battery for at least two years (General usage)
- Using the Bluetooth 4.0 (Low Energy) having:
  - Distance Detection
  - Warning with Buzzer and LED indicator
- Non-Replaceable Built-in Battery
- Card form factor with Thickness less than 4mm (85 x 50 x 4 mm)

### 1.3. Feature

- Built-in Buzzer
- Built-in LED
  - Red Color Only
- App “**Notification**” feature on the iOS and Android
- Distance Detection with Bluetooth 4.0 Connection:
  - Warning Distance can be configurable on the App, and will cooperated between device and App as
    - ◆ 5m (Close Range),
    - ◆ 10m (Mid Range),
    - ◆ 20m (Far Range),
    - ◆ 30m (Lost Range)
  - Warning Action (Buzzer) can be configurable on the App, and operated on both App and Device as
    - ◆ No Alarm
    - ◆ Short Alarm
    - ◆ Long Alarm
    - ◆ Alter Alarm
  - Warning Action (LED) can be configurable on the App, and operated on the Device as
    - ◆ No indicator
    - ◆ Single LED Indicator
    - ◆ Flashing LED indicator
    - ◆ Fast Flashing LED indicator
- Low Battery Indicator:
  - Long Alarm with Fast Flashing LED indicator

## 2. MECHANICAL SPECIFICATION

**2.1. Dimension:** 85mm x 50mm x 4mm (L x D x H) or even Smaller and Thinner

**2.2. Weight:** around 3-5g

### 2.3.2-Key Control

- i. Multi-Function (Tact Switch at Side)
- ii. Paging (Tact Switch at Side)

## 3. ELECTRICAL SPECIFICATION

### 3.1. Bluetooth Requirement

- Bluetooth Chipset: TI CC2541F128
- Distance: at least 40m
  - 4 facing directions
    - ◆ Front (Steady Positions)
    - ◆ Sides (Steady Positions)
    - ◆ Back (Steady Positions)
  - Phone in pocket (Steady Positions)
  - Between Human Body (Steady Positions)
  - Pass Criteria: Connection NO dropped
- Protocol and Feature:
  - “**Find Me**” for Distance detection

- Data Channel

**3.2. Power Requirement:**

- At Least 2 year battery Life on “**Find Me**” (Distance detection)
- CR2032 (Non-rechargeable type)

**3.3. LED + Sound Effect Indicator**

- Only one Red LED
- Only one Buzzer

Event	LED Effect	Sound Effect / VP	Remark
<b><i>Below indicators for Distance &amp; Low Battery:</i></b>			
TBC	TBC	TBC	TBC
TBC	TBC	TBC	TBC

### **3.4. Adaptor Requirement:**

- CR2032 Button Cell Battery

### **3.5. Compatibility (Bluetooth 4.0 or below music device)**

- Mobile
  - iOS: iPhone 4s, New iPad
  - Android OS: Motorola Razr

### **3.6. Operation Mode and Sequence:**

- TBC

## **4. DESIGN**

**ID:** See Below Rendering (Reference Only, ID will be updated)

**Color Specification:** Refer to CMF

**Material and Finishing:** Refer the CMF

**Illustration of button / connector (back diagram) label**

## 5. RELIABILITY

**General Operating Temperature:** 0 - 45 °C

**General storage temperature:** -20 - 65 °C

**Heat Storage test:** 98.5 hours with Temp Cycling

**General Humidity test:** 90% (Operating @ 45 °C)

**Vibration test:** 0.75 mm, 13Hz to 25Hz, 3 axis, 30 mins

**Drop test (in pack outer carton):** 1 corner, 3 edges, 6 faces

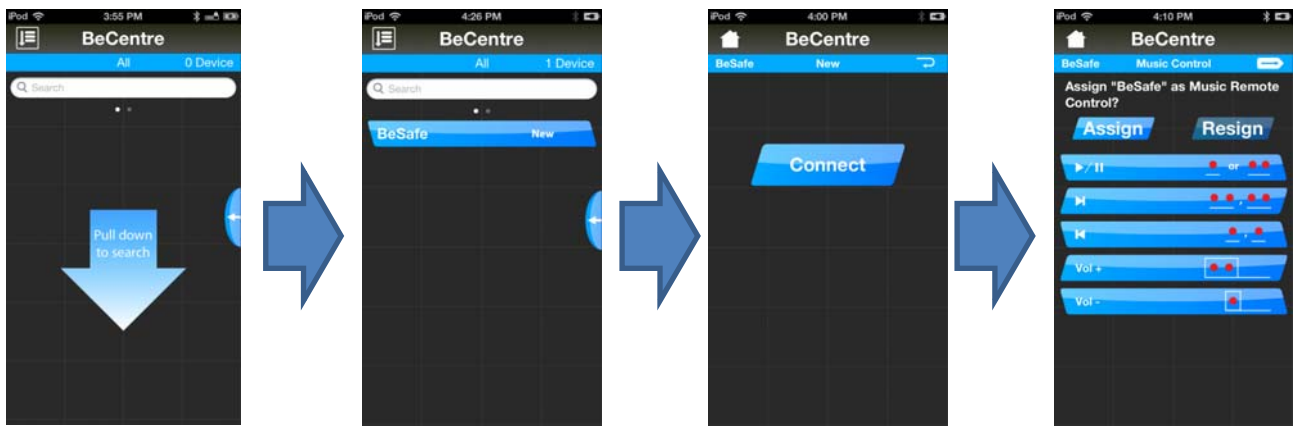
**Drop test (out of pack drop test):** 3 faces when opened, two faces when close at 1m height

**Product Life: 36 Months (3 years)**

## 6. How to connect

1. Pull out the Battery Plastic Tag from the unit
2. Press any button on the unit, and it sounds "Beep"
3. Download the App from App Store and Launch the App in your iDevice
4. Pull down the Home page on the App for search the "new" device
5. Just follow the Steps as shown
  - a. Press the any button to control the music Play/Pause
  - b. Holding the button to adjust Volume

## How to connect



Pull Down the screen from the App for searching

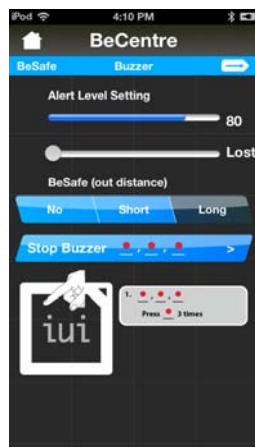
Select the "BeSafe" from the List

Select the "Connect" button

Select the "Assign" button



Select the  
"Assign"  
button



Select the  
"Next" to  
complete the  
setting up

### FCC Statement:

This device complies with part 15 of the FCC Rules. Operation is subject to the following two conditions: (1) This device may not cause harmful interference, and (2) this device must accept any interference received, including interference that may cause undesired operation.

This equipment has been tested and found to comply with the limits for a Class B digital device, pursuant to part 15 of the FCC Rules. These limits are designed to provide reasonable protection against harmful interference in a residential installation. This equipment generates, uses and can radiate radio frequency energy and, if not installed and used in accordance with the instructions, may cause harmful interference to radio communications. However, there is no guarantee that interference will not occur in a particular installation. If this equipment does cause harmful interference to radio or television reception, which can be determined by turning the equipment off and on, the user is encouraged to try to correct the interference by one or more of the following measures:

- Reorient or relocate the receiving antenna.
- Increase the separation between the equipment and receiver.
- Connect the equipment into an outlet on a circuit different from that to which the receiver is connected.
- Consult the dealer or an experienced radio/TV technician for help.

Caution: Any changes or modifications not expressly approved by the party responsible for compliance could void the user's authority to operate the equipment.