

TABLE OF CONTENTS

1 PURPOSE..... 2

2 SCOPE..... 2

3 PARENT DOCUMENT 2

4 PROCEDURE / INSTRUCTION..... 2

1 PURPOSE

To ensure packages are marked and labeled to assist with proper routing of the packages received to prevent damage and deterioration, including the protection of product quality after packaging. Where contractually specified, this protection is extended to include delivery to destination.

2 SCOPE

Applies to all suppliers and their affiliates

3 PARENT DOCUMENT

SOP 24/ SOP 114

4 PROCEDURE / INSTRUCTION**4.1 Label Requirements for Packages containing Hazardous-Flammable Material**

4.1.1 Package must be labeled indicating that there is hazardous material inside the package. Red labels are preferred.

4.1.2 Hazardous-flammable label must be on 5 sides of the package



4.1.3 Hazardous-flammable label is preferred to be a minimum size of 4"X4"



4.1.4 Packages must have labeling to identify all dangers and precautions related to the products within the package.

The ratings shall be provided in accordance with the NFPA standard:

Rating	Degree of flammability	Examples
0	Materials that will not burn	Water
1	Materials that must be preheated before they will ignite	Lubricating Oils
2	Materials that must be moderately heated or exposed to relatively high ambient temperatures before they will ignite, Combustible liquid flash point of 100° to 200°F	Diesel Fuel
3	Liquids and solids that can ignite under almost all temperature conditions, Flammable liquid flash point below 100°F	Acetone
4	Materials which will rapidly vaporize at atmospheric pressure and normal temperatures, or are readily dispersed in air and which burn readily	Propane, Butane

4.2 Label Requirements for Packages containing Corrosive Material

4.2.1 Package must be labeled indicating that there is hazardous material inside the package. Black labels are preferred.

4.2.2 Hazardous label must be on 5 sides of the package



4.2.3 Hazardous labels are preferred to be a minimum size of “4X4”



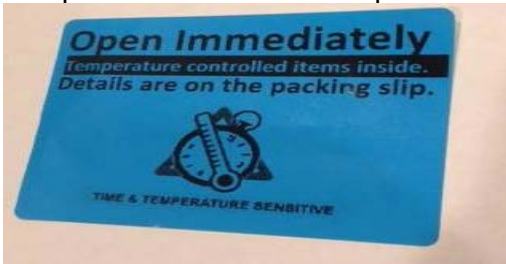
4.3 Label requirements for packages containing temperature sensitive products

4.3.1 (including products requiring refrigerated or frozen shipping and / or storage or products requiring protection from freezing) Package must be labeled indicating that there is a temperature sensitive product in the package. Blue labels are preferred.

4.3.2 Temperature control label must be on 5 sides of the package



4.3.3 Temperature control label is preferred to be a minimum size of 4”X4”



4.3.4 Packages must contain a non-reversible temperature indicator inside the package to ensure the product maintained the temperature required for the product life during the shipping process

4.4 Label requirements for packages containing products for vending

4.4.1 Packages to be labeled indicating no receipt processing and the package can be moved to the vending storage area. Orange/Yellow labels are preferred

4.4.2 Vending label must be on 5 sides of the package



4.4.3 Vending label is preferred to be a minimum size of “4X4”



4.5 Label requirement for all packages containing products with Cleanroom requirements

4.5.1 Packages to be labeled indicating that the products inside the package require special handling in a cleanroom environment. Yellow labels are preferred.

4.5.2 Cleanroom labels must be on 5 sides of the package



4.5.3 Cleanroom labels are preferred to be a minimum size of "4x4"



4.6 Label requirement for all packages containing products that need to be quarantined / tested prior to use.

4.6.1 Packages to be labeled indicating that the products inside need to be quarantined or tested prior to use. Green labels preferred.

4.6.2 Quarantined/test labels must be on 5 sides of the package



4.6.3 Quarantined/test labels are preferred to be a minimum size of "4X4"



4.7 Label requirement for all packages that were drop shipped to a third party and will now be forwarded to Plexus

- 4.7.1 Packages to be labeled indicating that the products inside the package contain parts that are being returned from outsourcing. Purple labels preferred.
- 4.7.2 Return from outsourcing labels must be on 5 sides of the package



- 4.7.3 Return from outsourcing labels are preferred to be a minimum size of “4x4”

**Return from
Outsourcing**

REVISION HISTORY

REV	RELEASE DATE	ORIGINATOR	REASON FOR CHANGE(S)
A	18 Sep 2014	Angela Calkins	CR59459 Initial Ballot Release
B	20 Aug 2015	Brandon Wier, Angela Calkins	CR63891 Updated document type to Specification and various changes throughout document that incorporates changes related to the "Musts". Added parent document # SOP114 Corrected two spelling errors Added section 4.7 "Return From Outsourcing"

Confidential – For Internal Use Only

*Notice: This document is considered "UNCONTROLLED" when it exists in any printed form.
See the Plexus Intranet for the current master version of this document.

Template Revision E