



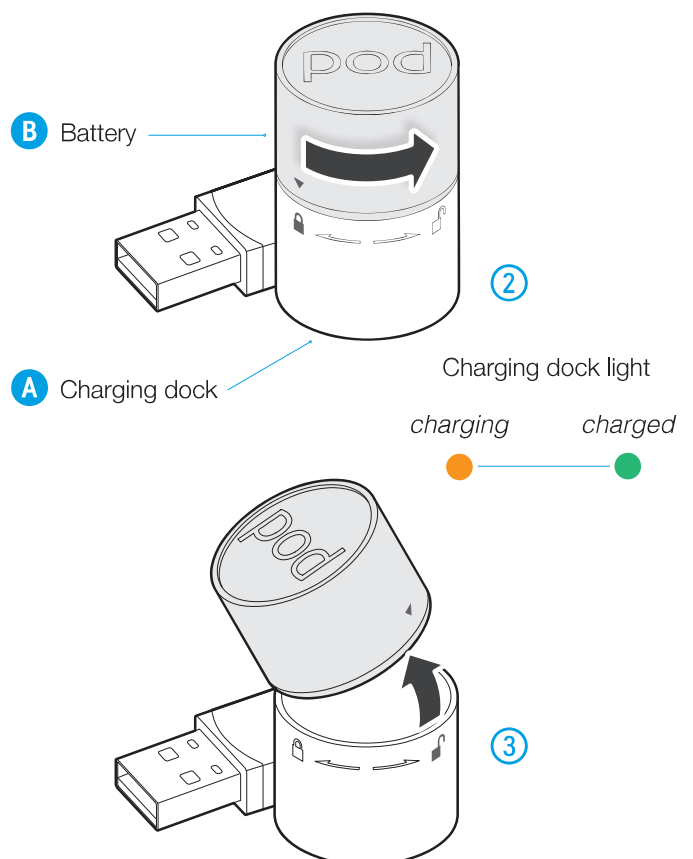
STEP 1 CHARGE THE BATTERY

Before setting up your new Pod, please charge one of the included batteries for 2 hours. The charging dock comes with a battery already attached to it, ready to charge.

- 1 Insert the charging dock **A** into a USB port on your computer or a USB wall plug.

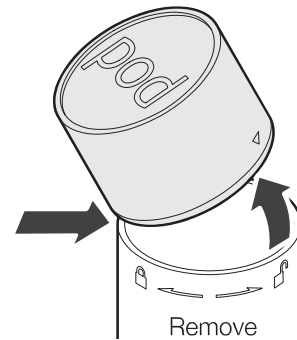
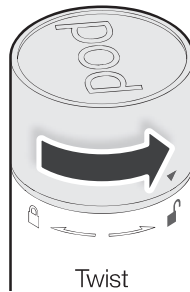
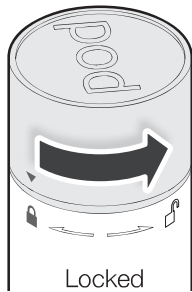
NOTE: An orange light will show that the battery is being charged. The battery needs to be charged until the orange light turns green after 2 hours.

- 2 Once the battery **B** is charged, remove it from the charging dock by twisting it counter-clockwise until the arrow on the battery lines up with the picture of the open padlock.
- 3 Once in the unlock position, simply remove the battery from the dock.



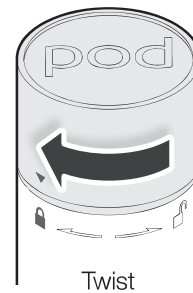
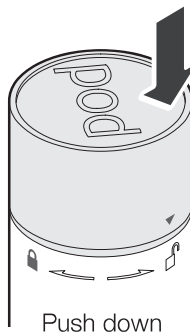
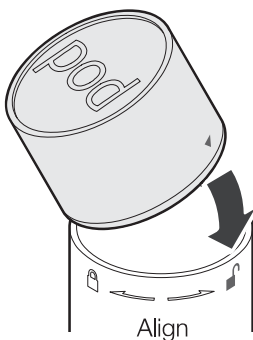
REMOVING THE BATTERY

- ① The Pod comes with a battery already attached and locked. You need to remove the existing battery first.
- ② Firmly twist the battery counter-clockwise until the arrow on the battery lines up with the picture of the open padlock on the Pod.
- ③ Remove the battery once in the unlock position.



ATTACHING THE BATTERY

- ① Attach the new battery by lining up the arrow on the battery with the picture of the open padlock on the Pod.
- ② Push the battery into place by pressing it down into the unlock position.
- ③ Firmly twist the battery clockwise until the arrow lines up with the picture of the closed padlock.



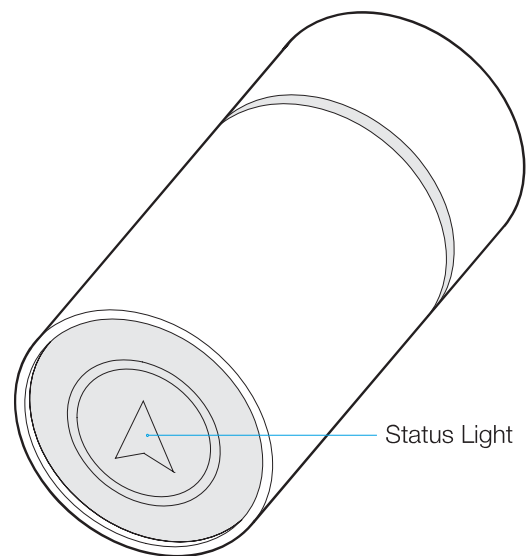


STEP 2 POWER UP YOUR POD

The Pod icon on the bottom end of your Pod is the status light, once the battery is attached the unit is on.

- ① Once the battery is attached, go outside to an open area with a clear view of the sky away from buildings and trees. The status light will flash to reveal the connection of the device to the Pod network.

NOTE: Pod will go into a start-up phase once the battery is attached. During this period, the light will flash every few seconds to indicate the status of the Pod, as explained in the table.



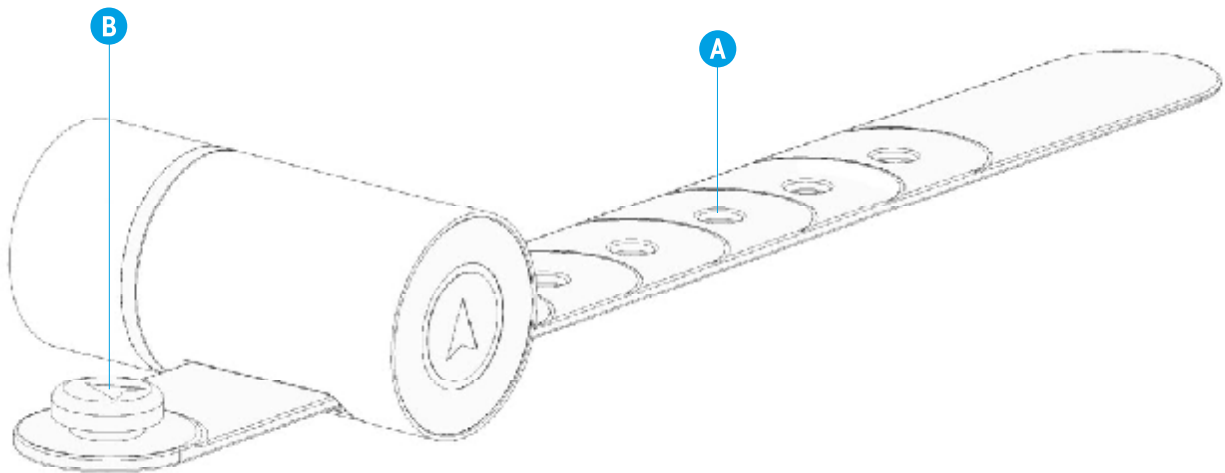
GREEN LIGHT	BLUE LIGHT	RED LIGHT
All systems working well	Searching for signal	Battery low / Systems error



STEP 3 ATTACHING YOUR POD

NOTE: Pod attaches nicely to almost anything using the supplied straps.

*NOTE: The rubber strap should simply loop through the unit and around whatever you're attaching it too. Fasten it in place by stretching the most appropriate hole **A** over the top of the button **B**.*



flip to continue ↗

FCC Statement

This equipment has been tested and found to comply with the limits for a Class B digital device, pursuant to Part 15 of the FCC Rules. These limits are designed to provide reasonable protection against harmful interference in a residential installation. This equipment generates uses and can radiate radio frequency energy and, if not installed and used in accordance with the instructions, may cause harmful interference to radio communications. However, there is no guarantee that interference will not occur in a particular installation. If this equipment does cause harmful interference to radio or television reception, which can be determined by turning the equipment off and on, the user is encouraged to try to correct the interference by one or more of the following measures:

- Reorient or relocate the receiving antenna.
- Increase the separation between the equipment and receiver.
- Connect the equipment into an outlet on a circuit different from that to which the receiver is connected.
- Consult the dealer or an experienced radio/TV technician for help.

This device complies with part 15 of the FCC Rules. Operation is subject to the condition that this device does not cause harmful interference.

Changes or modifications not expressly approved by the party responsible for compliance could void the user's authority to operate the equipment.

Specific Absorption Rate (SAR) information:

This Pod 3 GPS Tracker and Activity Monitor meets the government's requirements for exposure to radio waves. The guidelines are based on standards that were developed by independent scientific organizations through periodic and thorough evaluation of scientific studies. The standards include a substantial safety margin designed to assure the safety of all persons regardless of age or health.

FCC RF Exposure Information and Statement The SAR limit of USA (FCC) is 1.6 W/kg averaged over one gram of tissue. Device types: T(FCC ID: 2AD83POD-3) has also been tested against this SAR limit.

The highest SAR value reported under this standard during product certification for use at the body is 1.198W/kg. This device was tested for typical body-worn operations with the back of the handset kept 0mm from the body. To maintain compliance with FCC RF exposure requirements, use accessories that maintain a 0mm separation distance between the user's body and the back of the handset.

The use of belt clips, holsters and similar accessories should not contain metallic components in its assembly. The use of accessories that do not satisfy these requirements may not comply with FCC RF exposure requirements, and should be avoided.

Additional information on Specific Absorption Rates (SAR) can be found on the Cellular Telecommunications Industry Association (CTIA) web-site at <http://www.wow-com.com>. * In the United States and Canada, the SAR limit for mobile phones used by the public is 1.6 watts/kg (W/kg) averaged over one gram of tissue. The standard incorporates a substantial margin of safety to give additional protection for the public and to account for any variations in measurements.



STEP 4 GET THE APP

iOS / ANDROID APP

To get the native app on your smartphone:

- ① Visit the Apple App Store or Google Play Store from your smartphone.
- ② Search for “Pod Trackers”.
- ③ Click the Pod Trackers app and download as normal.
- ④ Create a new user and enter your details.
- ⑤ Add your Pod and enter the required fields.
- ⑥ Enter your Pod ID found on the label inside the box or discover it via bluetooth.

THE WEB APP

To track your pet on your mobile, tablet or computer:

- ① Open a browser and visit app.podtrackers.com
- ② Create a new user and enter your details.
- ③ Add your Pod and enter the required fields.
- ④ Enter your Pod ID found on the label inside the box or discover it via bluetooth.
- ⑤ Save the App to your home screen.

 Visit support.podtrackers.com to learn how to use the app.



ADDITIONAL HELP

We believe that no one should ever have to go through the pain of losing the things they care about most, so we developed the world's smallest & lightest GPS pet tracker.

Check out our support site for articles and videos or get in touch:



support.podtrackers.com

Pod version 3.0

support.podtrackers.com

Getting started 

