

CHD FIVE

Quick reference



Computer Hardware Design SIA
CHD Europe SIA

© All rights reserved.
Computer Hardware Design SIA
Dzelzavas 120i, Riga, LV-1021
Latvia
Phone:+371 67802812
Fax:+371 67802822
www.chdeurope.com

Table of contents

1. Batteries and Power	5
1.1. Overview	5
1.2. Suspend Mode	5
Suspending.....	5
Resuming	6
1.3. Battery	6
1.4. Battery Warnings and Cautions	6
1.5. Battery Disposal	7
2. Using CHD FIVE.....	8
2.1. Desktop.....	8
2.2. Inbox.....	9
2.3. Internet Explorer.....	10
2.4. Quick ScanSet Application.....	11
2.5. Word Pad.....	12
2.6. Installing Programs.....	13
Using an Installation Wizard	13
Installing Programs Manually	13
Using File Explorer to Add to the Start Menu.....	14
Using ActiveSync to Add to the Start Menu	14
2.7. Removing Programs	15
3. Configuring a PDA.....	16
3.1. Control panel	16
3.2. Stylus	17
3.3. Backlight.....	18
Battery power	18
External power.....	18
Keyboard backlight.....	19
3.4. Bluetooth	20
3.5. Date and Time	21
3.6. Dialing	22
3.7. Display Configuration	23
Background.....	23
Appearance	24
3.8. Input Panel.....	25
3.9. Internet Settings.....	26
3.10. Keyboard	28
3.11. Network and dialup connections	29
3.12. Owner	30
3.13. Password.....	31
3.14. PC Connection.....	32
3.15. Power Configuration.....	33
3.16. Programm buttons.....	34
3.17. Regional settings.....	35
3.18. Scanner configure	36
3.19. Storage manager	39
3.20. System Properties	40
General.....	40
Memory	41
Device name	41
3.21. Terminal server client licences	42
3.22. Volume & sounds	43

1. Batteries and Power

1.1. OVERVIEW

Battery charging, installation, and information about the single-slot dock, battery charger and power cable are located in the Quick Reference Guide.

1.2. SUSPEND MODE

The PDA will go into suspend or sleep mode when it is idle for a configurable period of time, by default it is configured to 3 minutes. The idle duration can be customized using the Power control panel. Suspend mode works and looks just like you have turned the unit off.

Press the [On/Off] key to suspend (put to sleep) the CHD Five.

Press the [On/Off] key again for the PDA to resume its previous state.

Use the Battery Power control panel to set the idle duration and suspend mode initiation. This will save battery power when PDA is not in use.

Suspending

The following conditions will suspend (put the PDA to sleep):

- Press the [Power] key while the unit is on.
- The sleep timer expires, which indicates that there has been no use for a specified period of time.
- The battery pack is completely discharged.

Resuming

Use one of the following methods to resume (wake up the PDA):

- Press [Power] key to suspend or resume (wake up).
- Put the PDA into a dock or connect to data cable.

When a battery pack completely discharges while the unit is in suspend mode, the PDA remains suspended until the discharged battery is changed or PDA is connected to charger.

1.3. BATTERY

The battery pack in the PDA is a Lithium Ion battery pack 3.7V, 2000 mAh.

1.4. BATTERY WARNINGS AND CAUTIONS

Prior to using the PDA for the first time, you **MUST** charge the battery pack. The initial charging cycle for both the battery pack and back-up battery takes approximately thirteen (13) hours. Subsequent charging cycles take four (4) hours.

If you remove the battery pack or it completely discharges, there is a 2 hour window in which to insert a charged battery pack before the backup battery completely discharges. If your backup battery completely discharges, the contents of the RAM memory will be lost. If your backup battery is less than fully charged, there is proportionally smaller window of time available.

Use only the correct battery packs, charger, and dock supplied by a CHD or CHD dealer. The use of other battery supplies can damage the PDA and void your warranty. For the correct supplies for the CHD FIVE, please contact your CHD reseller.

Lithium-ion Polymer battery packs can get hot, explode, ignite and/or cause serious injury if exposed to abusive situations.

Follow the safety warnings listed below:

- Do not place the battery pack in fire or heat the battery.
- Do not install the battery pack backwards so the polarity is reversed.
- Do not connect the positive terminal and negative terminal of the battery pack to each other with any metal object (such as wire).
- Do not carry or store battery pack together with metal objects.
- Do not pierce the battery pack with nails, strike the battery with a hammer, step on the battery or otherwise subject it to strong impacts or shocks.
- Do not solder directly onto the battery pack.
- Do not expose battery pack to liquids, or allow the battery contacts to get wet.

Do not disassemble or modify the battery pack. The battery pack contains safety and protection devices, which, if damaged, may cause the battery pack to generate heat, explode or ignite.

Do not discharge the battery pack using any device except for the specified device. When it is used in devices other than the specified device, the battery pack can be damaged or its life expectancy reduced. If the device causes an abnormal current to flow, it may cause the battery pack to become hot, explode or ignite and cause serious injury.

In the event the battery pack leaks and the fluid gets into one's eye, do not rub the eye. Rinse well with water and immediately seek medical care. If left untreated, the battery fluid could cause damage to the eye.

If you remove the battery pack or perform a cold reset on the PDA, you will lose any data currently in RAM memory.

When you remove the battery pack, the unit automatically performs a cold reset. It is a good idea to store any important data in the resident Flash memory for this reason.

Always charge the battery pack within the temperature range of 32°-113°F (0°-45°C).

Do not place the battery pack in microwave ovens, high-pressure containers or on induction cookware.

Immediately discontinue use of the battery pack if, while using, charging or storing the battery, it emits an unusual smell, feels hot, changes color or shape, or appears abnormal in any other way.

Do not place the battery pack in or near fire, on stoves or other high temperature locations. Do not place the battery pack in direct sunlight or use or store the battery pack inside cars in hot weather. Doing so may cause the battery pack to generate heat, explode or ignite. Using the battery pack in this manner may also result in a loss of performance and a shortened life expectancy.

CHD recommends annual replacement of rechargeable battery packs to ensure maximum performance.

1.5. BATTERY DISPOSAL

Replace the battery pack only with one supplied by a CHD reseller.

When the battery is worn out, insulate the battery contacts with adhesive tape or a similar material prior to disposal.

Please recycle Lithium-Ion Batteries.

Do not throw Lithium-Ion Batteries in the trash.

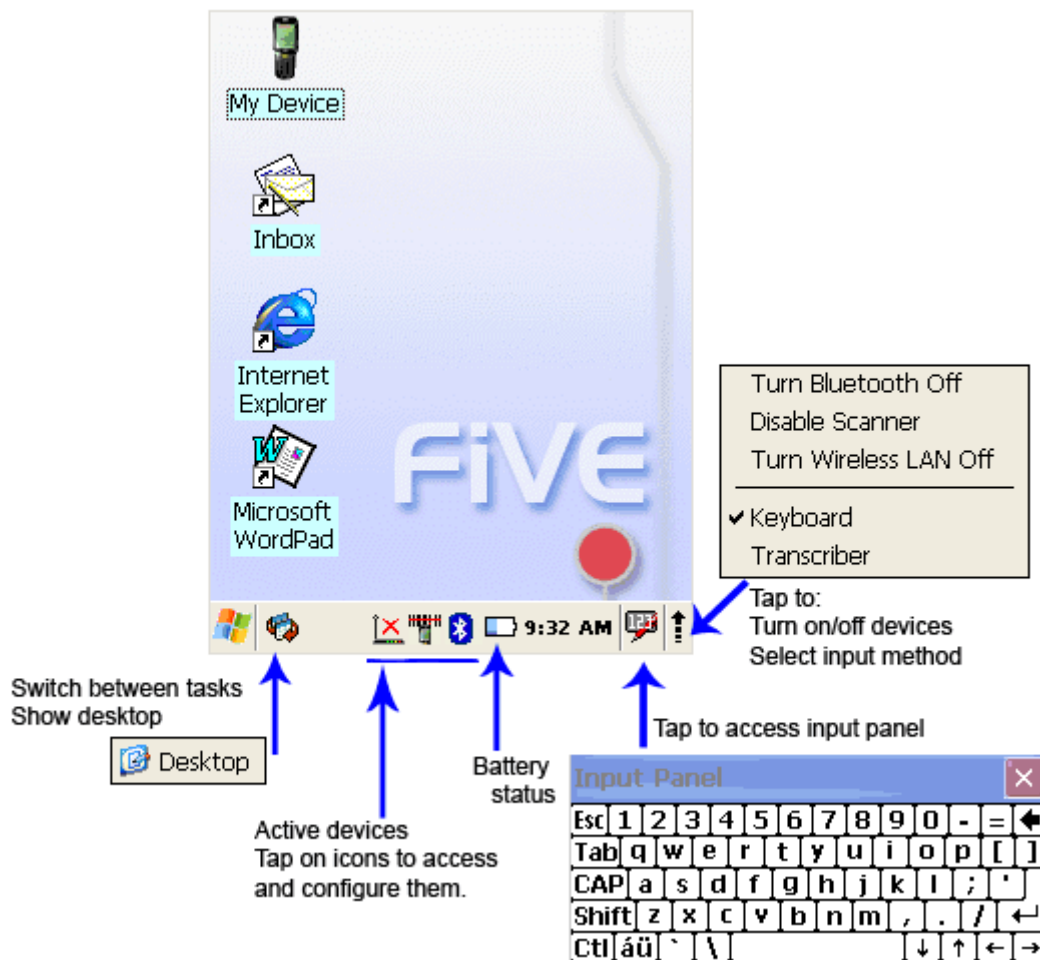
2. Using CHD FiVE

2.1. DESKTOP

Workflow is like all other Microsoft operational systems.

To run program double tap on a shortcut icon on desktop or run program from Start menu.

Below is standard desktop layout.

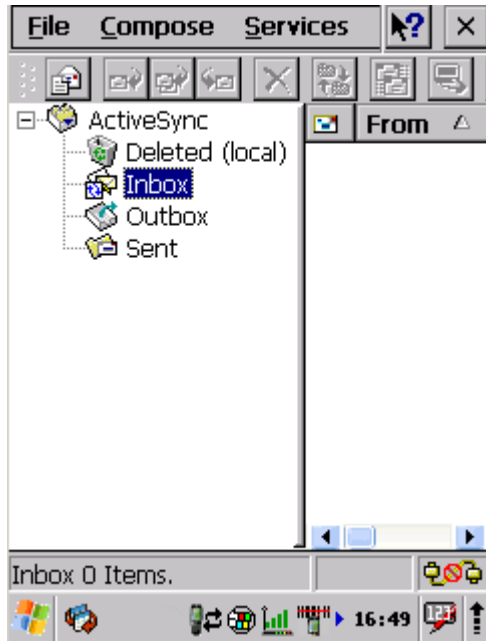


2.2. INBOX



Inbox

The PDA comes with Inbox for Windows CE .NET installed from the factory. Inbox is a familiar Microsoft email interface.



To set up Inbox:

Open Inbox by selecting Start > Programs > Inbox.

Select Services > Options from the command bar. Drag the dialog to show the right edge to configure email.

Select Add...

Select Service Type and enter in name of email service in the Service Name field. Select the type of service. Enter the server and user information in the Mail Service Definition.

Configure your inbox using the Mail General Preferences dialog.

Configure your mail retrieval settings using the Mail Inbox Preferences.

Press OK to complete the Inbox configuration.

Select Services > Connect from the command bar.

Select Services > Send/Receive Mail from the command bar to manually retrieve mail. Any pending email appears in the inbox after connecting.

2.3. INTERNET EXPLORER



The PDA comes with Internet Explorer for Windows CE .NET installed



Open Internet Explorer by selecting Start > Programs > Internet Explorer.

To set a default home page, navigate to the desired default web page.

Select View > Internet Options from the command bar.

Enter the desired URL in the Start Page field.

Press the OK button Internet Explorer uses sliding menus for application and navigation control.

Tap and drag the sliding menus to the left or right to see the hidden menu items and toolbars.

To achieve more screen real estate in Internet Explorer, you can hide the Status bar and View menu.

From the top menu bar, go to View > Hide Toolbars.

Once it is hidden, you must cold reset to access these features again.

Refer to the Quick Reference Guide for information on the cold reset.

2.4. QUICK SCANSET APPLICATION

Go to Start > Programs > Scanner > Quick ScanSet to open the bar code scanning application.

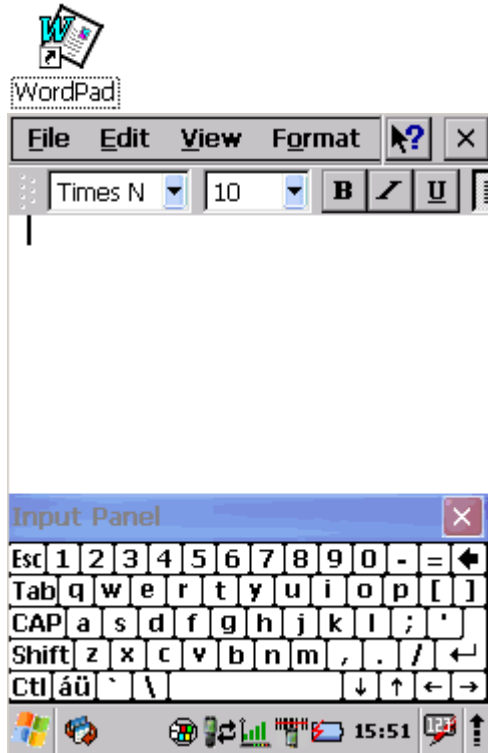
This application works in the background and has a System Tray Icon you can use to access it's features and functions.

Go to Start > Programs > Scanner > Scandiag to open scan dialog and test barcode scanning.



2.5. WORD PAD

The PDA comes with WordPad for Windows CE .NET installed from the factory.



To start Wordpad, select
Start > Programs > Microsoft WordPad.

The following text and document file types are compatible with WordPad:

- Text (*.txt)
- Word Document (*.doc)
- Rich Text File (*.rtf)
- WordPad (*.pwd)

When you transfer file types other than *.pwd to the Windows CE .NET device, it translates the files into a compressed Windows CE .NET file type.

2.6. INSTALLING PROGRAMS

Programs pre-installed on the device are stored in ROM (read only memory). You cannot remove, or modify this software. You may add programs and data files to RAM (random access memory) or into memory card. Please follow the directions provided with the software to install it.

Using an Installation Wizard

If the file has an installer, the installation wizard begins. Follow the directions on the screen. Once the software is installed on your desktop computer, the installer transfers the software to your terminal automatically.

Installing Programs Manually

If the file does not contain an installer, an error message indicates the program is valid but is designed for a different type of computer.

1. Install * . cab, * . exe, * . zip, setup. exe files, or other files designed for the device.
2. Windows CE .NET applications will also work on the device.

Start by downloading the program to your desktop computer (or insert the CD or disk that contains the program into your desktop computer).

1. Select Start > Settings > Control Panel > System > General on device. Make a note of the information in the processor field.
2. Read the installation instructions, ReadMe files, or manual that comes with the program. Many programs provide installation instructions. If you cannot find installation instructions for the program in the ReadMe file or manual, use ActiveSync Explorer to copy the program file to the Program Files folder on your device. For more information on copying files using ActiveSync, refer to the ActiveSync online Help.
3. Connect your terminal and desktop computer.
4. Double-click the * . exe file.
5. Once the installation is complete, you double-tap the program icon from your desktop, or select Programs > program icon to select it.

Using File Explorer to Add to the Start Menu

1. Select Start > Programs > File Explorer, and select the folder where the program is stored.
2. Select Cut from the Edit > Cut from the command bar.
3. Open the Programs folder located in the Windows folder, select Paste from the pop-up menu.

The program appears on the menu.

Using ActiveSync to Add to the Start Menu

1. Use the Explorer in ActiveSync on your desktop computer to explore the files on your PDA and locate the program. For more information on using ActiveSync, refer to the ActiveSync online Help.
2. Right-click on the program, then select Create Shortcut.
3. Move the shortcut to the Programs folder in the Windows folder. The shortcut appears on the menu.

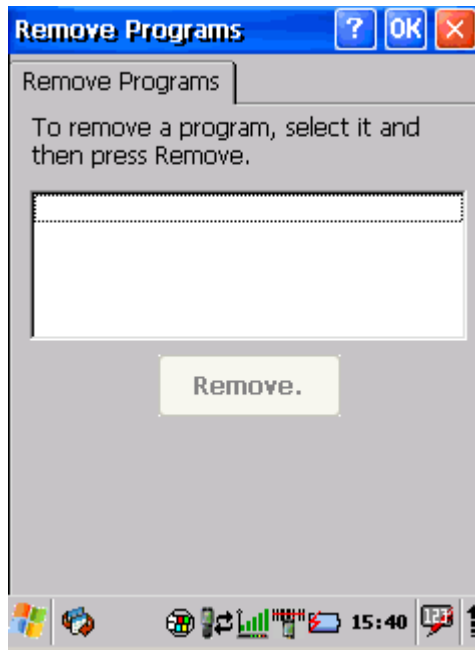
2.7. REMOVING PROGRAMS



Only user installed programs can be removed.

To remove a program select Start > Settings > Control Panel > Remove Programs.

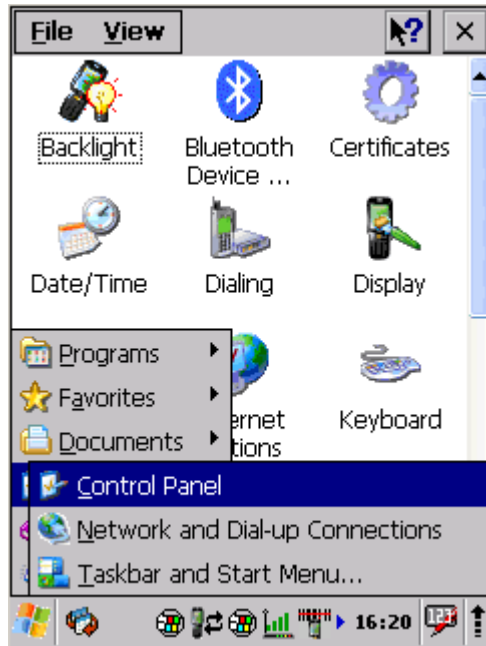
Select the program you wish to remove from the list and press remove.



3. Configuring a PDA

3.1. CONTROL PANEL

To change the settings on your new PDA, select Start > Settings > Control Panel to view the Control Panels and settings you can modify.



Other than the Quick ScanSet applet, the list of settings is standard Windows CE .NET settings.

For more information on the Windows CE .NET operating system, please refer to Microsoft's website at <http://www.microsoft.com/windows/embedded/ce.net/>.

3.2. STYLUS



Stylus

You might need to align the touch screen (i.e. when you notice that when you attempt to select one item with the stylus, another item is erroneously selected).



To align the touch screen, press <FUNC> + <Space> to open the align Screen dialog as shown to the right. Carefully press and briefly hold stylus on the centre of the target as the target moves around the screen.

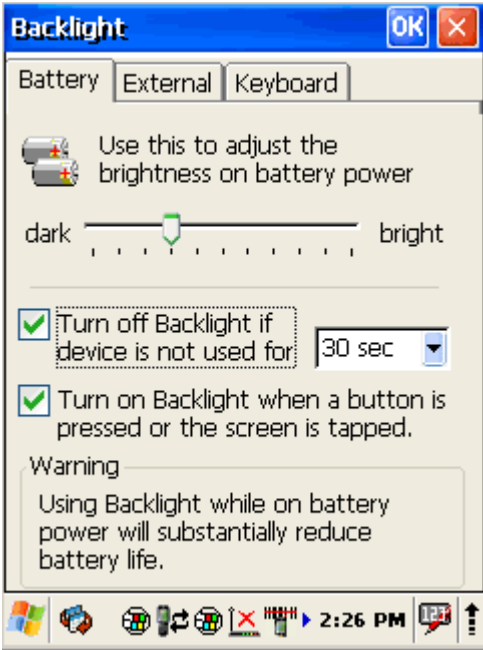
3.3. BACKLIGHT



Backlight

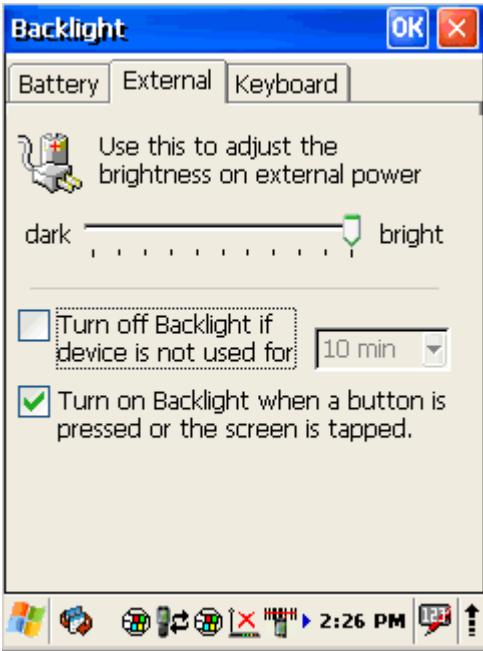
- 1. Select Start > Settings > Control Panel > Backlight

Battery power



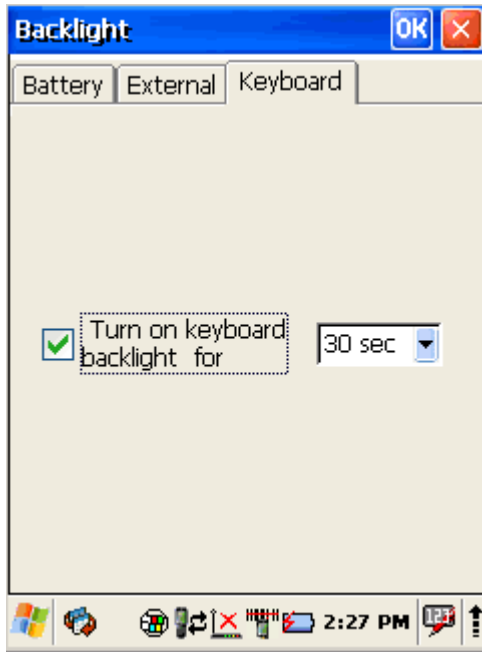
- Modify display brightness when on battery.
- Set backlight timeout time
- Enable to turn on backlight when a button is pressed or the screen is tapped

External power



Modify display brightness when on battery.
Set backlight timeout time
Enable to turn on backlight when a button is pressed or the screen is tapped

Keyboard backlight



Set keyboards backlight timeout.

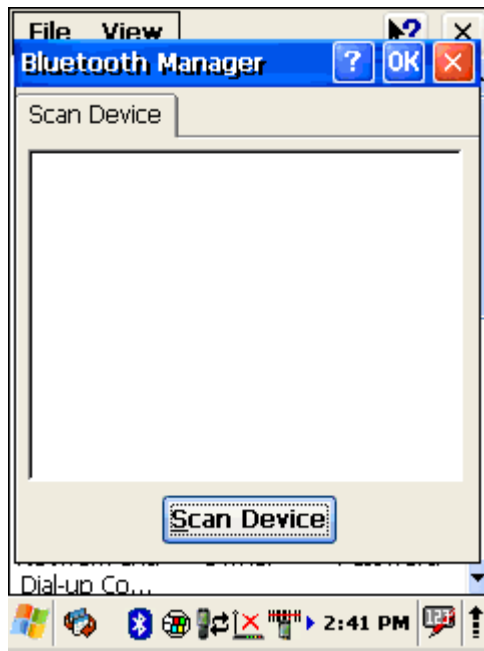
3.4. BLUETOOTH



Bluetooth
Device ...

Select Start > Settings > Control Panel > Bluetooth devices

Click **Scan Device** button to scan Bluetooth devices in range.

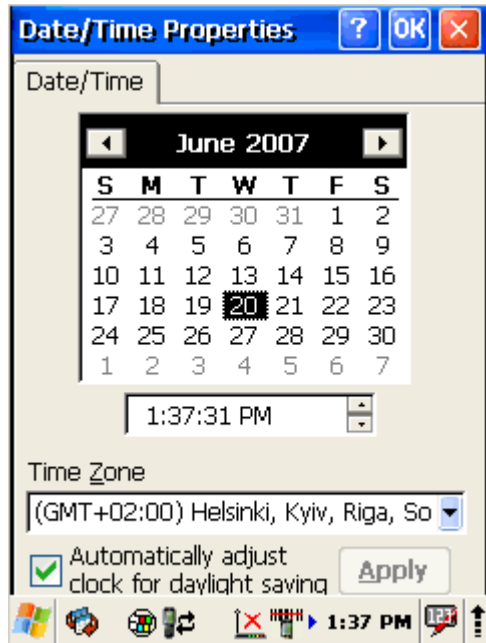


3.5. DATE AND TIME



Date/Time

In the Date/Time options, you can change the year, month, date, time, time zone, or select automatic adjust for Daylight Savings Time. To set or change the date and time:



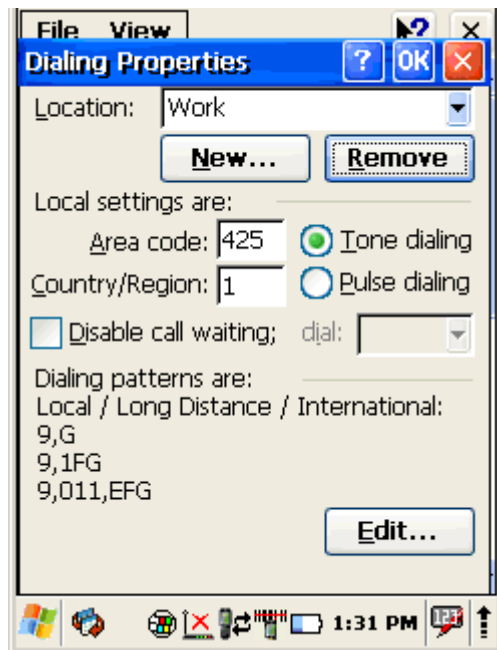
2. Select Start > Settings > Control Panel > Date/Time
3. Select the month to open a pull down list of months or press the arrow buttons on either side of the month to increase or decrease the month.
4. To change the year, select the year to open a numeric dial. Select the up arrow to increase the value; select the down arrow to decrease the value. Or you can type a new year value in the field.
5. To change the time, select the hour, minute, seconds, or AM/PM and select the up arrow to increase the value; select/tap the down arrow to decrease the value. You can also type a new time value in the field.
6. Select your correct time zone from the pull-down list.
7. To automatically adjust the clock for Daylight Savings Time, enable the checkbox at the bottom of the screen.
8. Select Apply to make save your changes [and make additional modifications] or select OK to exit the Date/Time settings.

3.6. DIALING



Dialing

Edit dialling properties to connect device to network
Select Start > Settings > Control Panel > Display



3.7. DISPLAY CONFIGURATION



Display

To modify the display and/or backlight of the PDA refer to the following:

Background

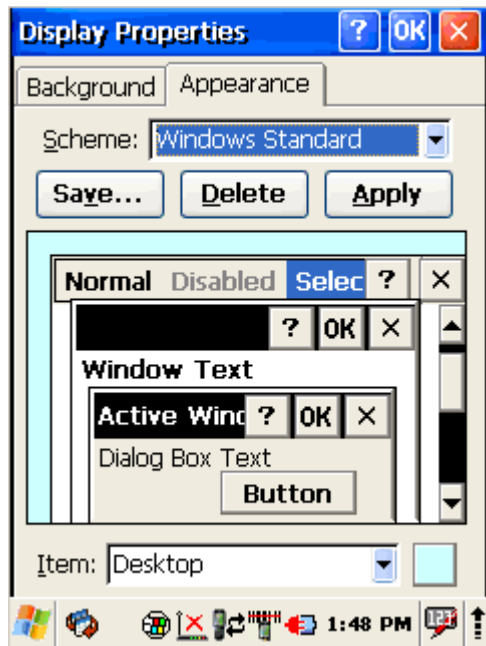
To change the Background image:

The current file is located in the Windows directory with the CHD logo file named logo.bmp. Place a new image in the Windows directory. This file must be exactly 240 by 320 pixels.

1. Select Start > Settings > Control Panel > Display.
2. Select the new file name by using the Browse button. To exit the Background settings,
3. press OK from the control bar, or press the <Enter> key on the keypad.



Appearance



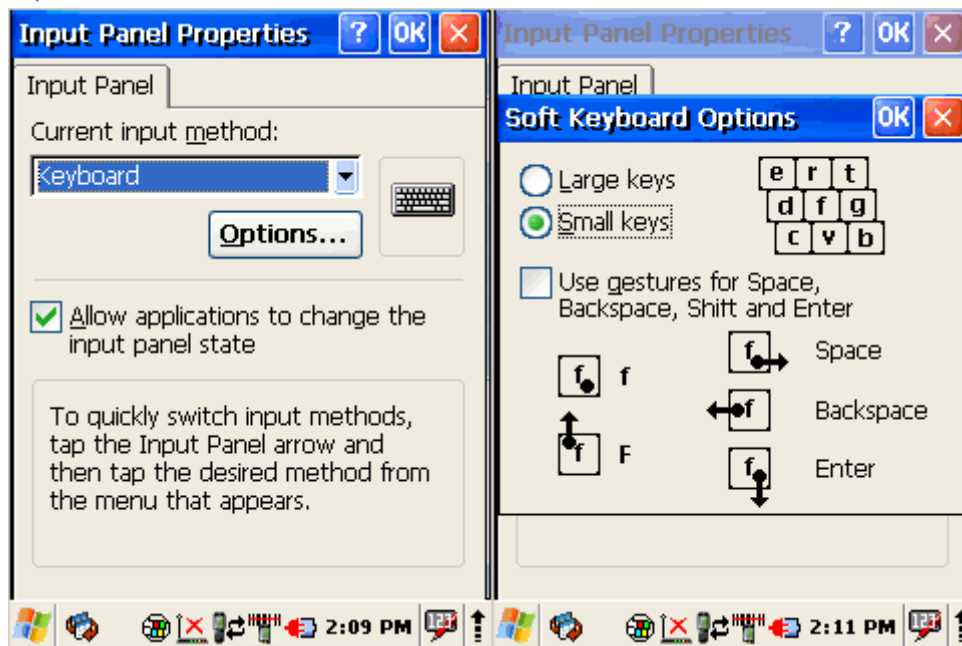
To change Windows appearance default settings:

1. Select Start > Settings > Control Panel > Display > Appearance tab.
2. Select form Items dropdown menu desired item
3. Press on color box to change items color
4. To save your created appearance scheme tap on < Save .. > button.
5. To exit the Backlight settings, press OK from the control bar,

3.8. INPUT PANEL



Input Panel



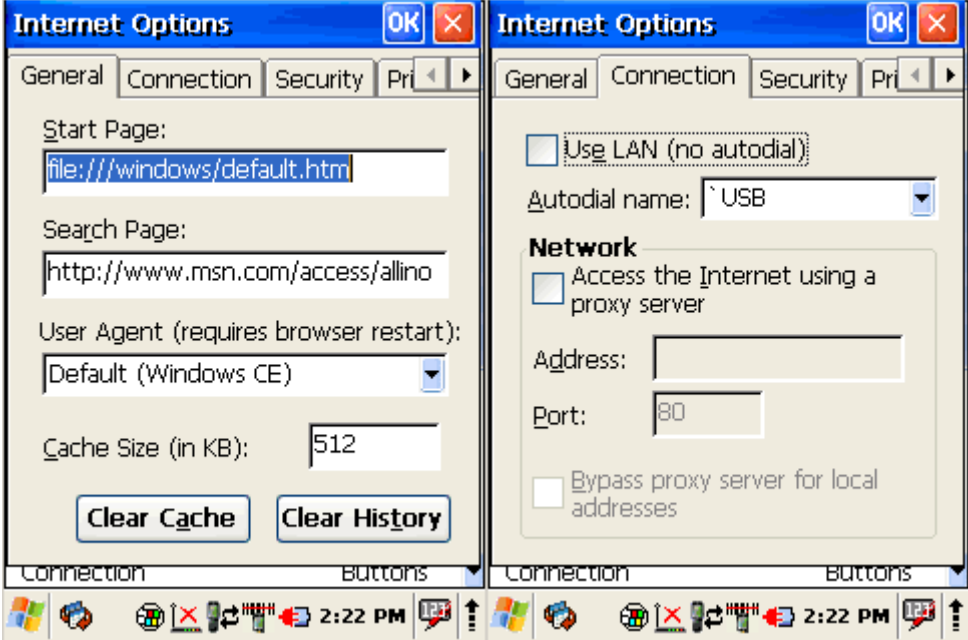
To change the Soft Input Panel settings:

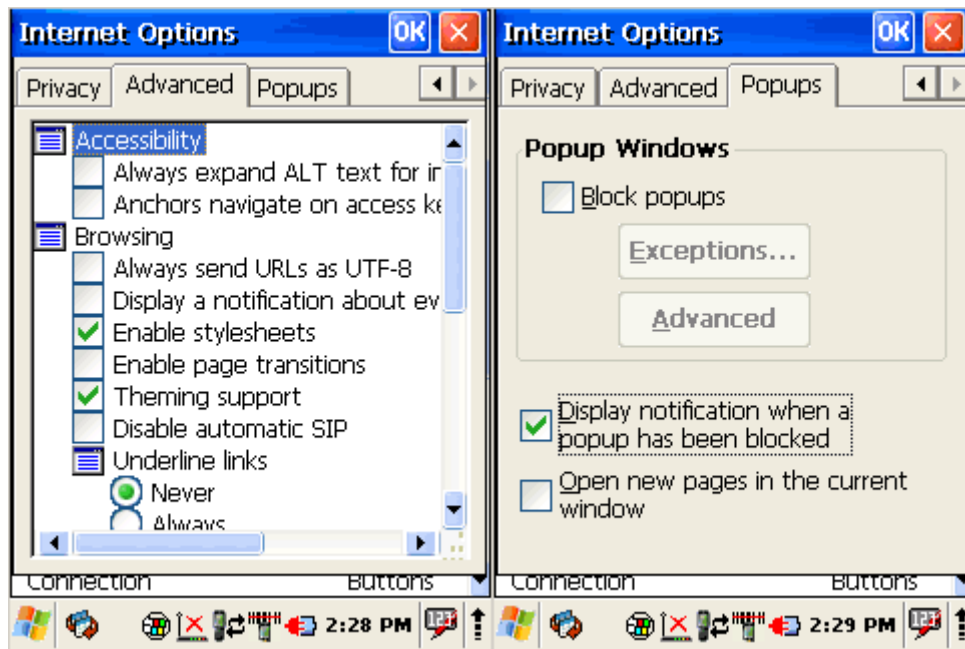
1. Select Start > Settings > Control Panel > Input Panel.
2. Change the desired settings.
3. To change the Soft Keyboard Options, tap the Options button.
4. Change the soft keyboard options as desired, selecting from:
 - Large or small keys.
 - Using gestures for space, backspace, shift, and enter.
5. To exit the Soft Keyboard Options, press OK on the control bar, or press the <Enter> key on the keypad.
6. To exit Input Panel settings, press OK from the control bar, or press the <Enter> key on the keypad.

3.9. INTERNET SETTINGS



Internet Options





To change the Internet default settings:

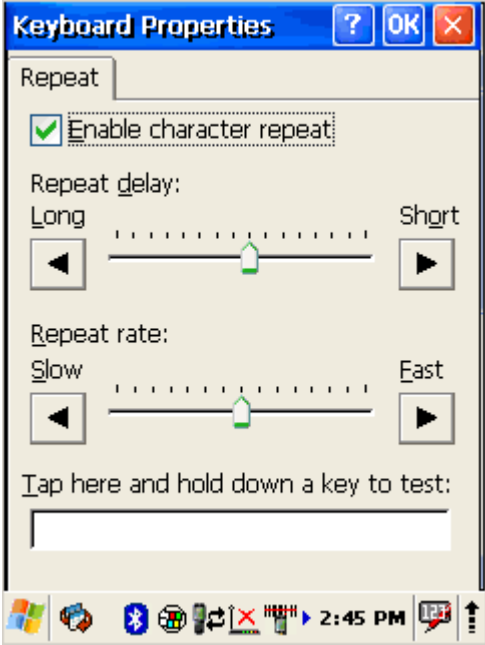
1. Select Start > Settings > Control Panel > Internet Settings.
2. On the **General** tab - type in the URL of the desired start page and the desired search engine. You can also change the Cache Size, clear the Cache, and Clear the History.
3. On the **Connection** tab, modify the network access settings as desired.
4. On the **Security** tab change browsing security options.
5. On the **Privacy** tab set cookies options
6. On the **Advanced** tab change advanced browser options
7. On the **Popups** tab specify to allow to show or block popups
8. To exit Internet Settings, press OK from the control bar, or press the <Enter> key on the keypad.

3.10. KEYBOARD



Keyboard

Select Start > Settings > Control Panel > Keyboard



Enable or disable character repeat
Adjust repeat delay and rate settings.

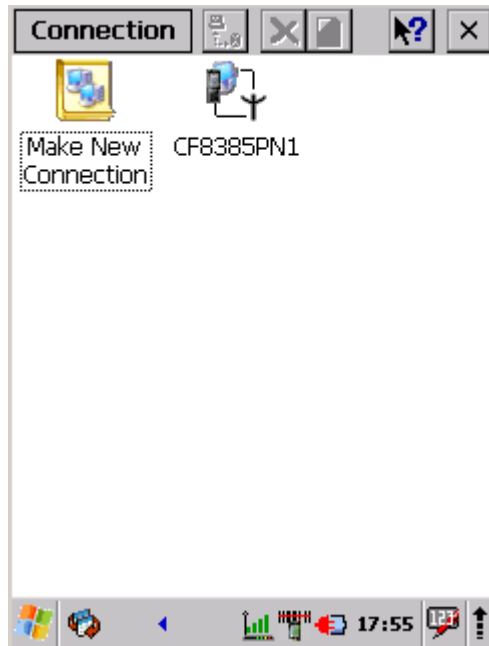
If needed test your settings.

3.11. NETWORK AND DIALUP CONNECTIONS



Network and
Dial-up Co...

Select Start > Settings > Control Panel > Network and dialup connections

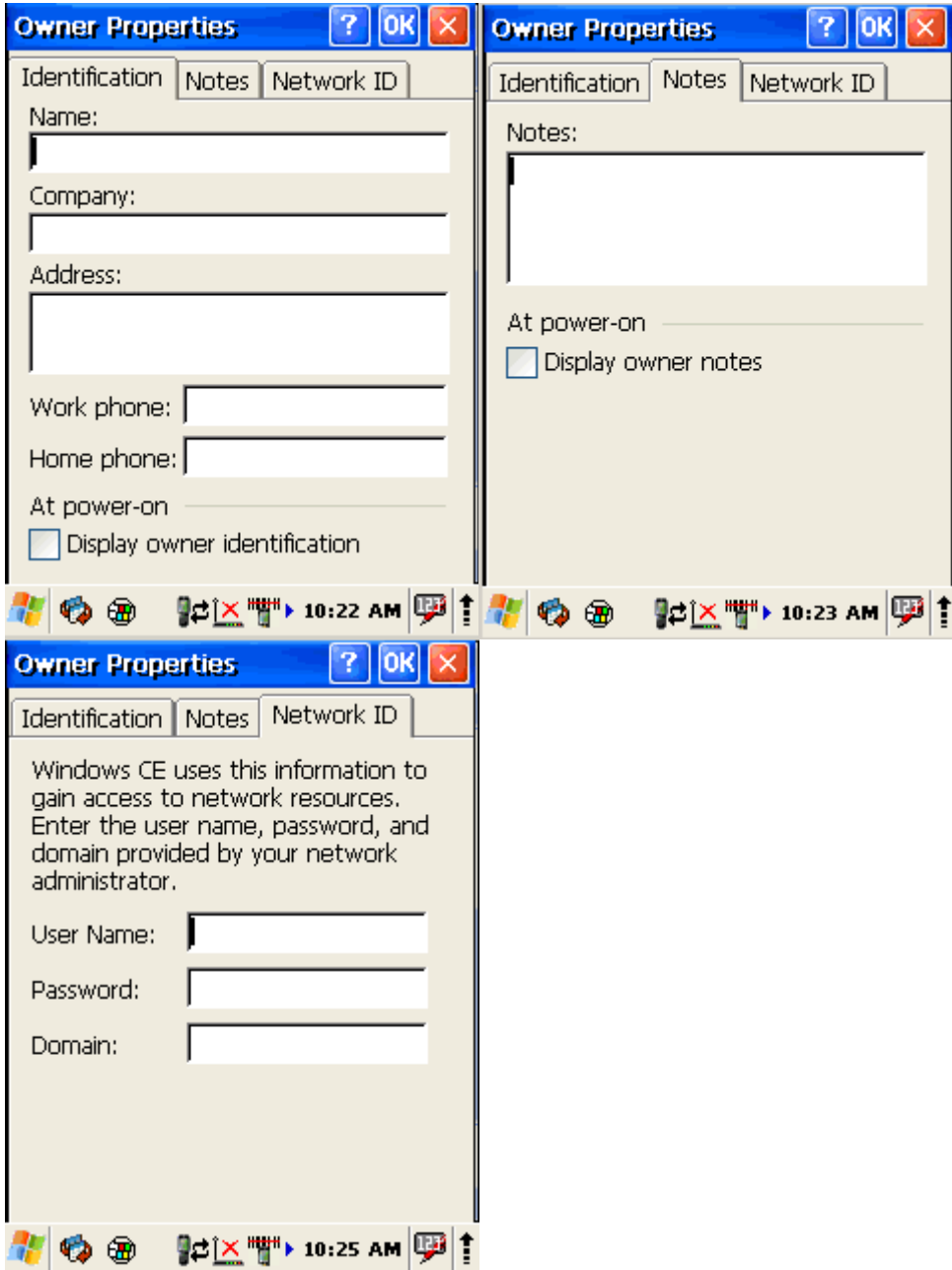


Create new or edit current network connection settings.

3.12. OWNER



Owner



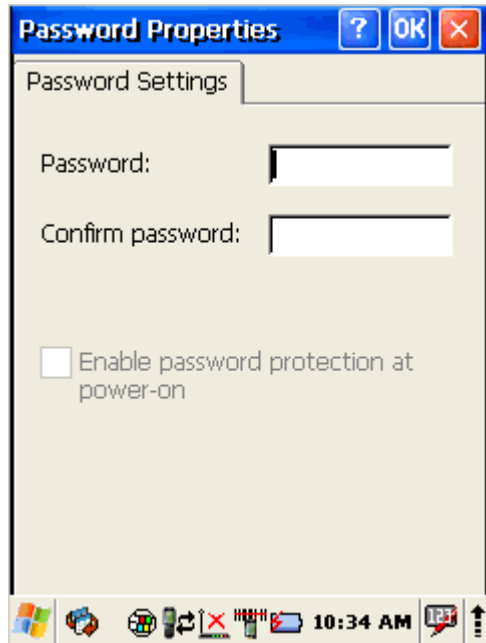
To change the Owner default settings:

1. Select Start > Settings > Control Panel > Owner Properties.
2. Enter data using the input panel or the keypad on the PDA.
3. In the **Notes** tab set additional notes.
4. In the **Network ID** tab enter information to gain access to network resources.
5. To exit the Owner Properties control panel, press OK from the control bar, or press the <Enter> key on the keypad.

3.13. PASSWORD



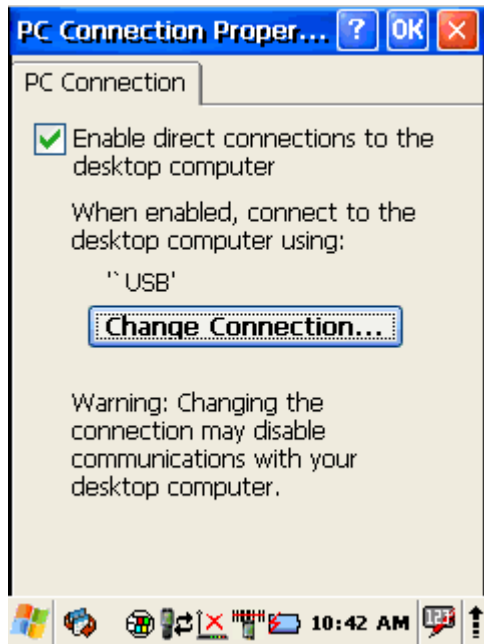
Password



To change the Password default settings:

1. Select Start > Settings > Control Panel > Password Properties.
2. Enter the desired password twice as indicated in the two fields.
3. Select to enable password protection at power-on.
4. To exit the Password control panel, press OK from the control bar, or press the <Enter> key on the keypad.

3.14. PC CONNECTION



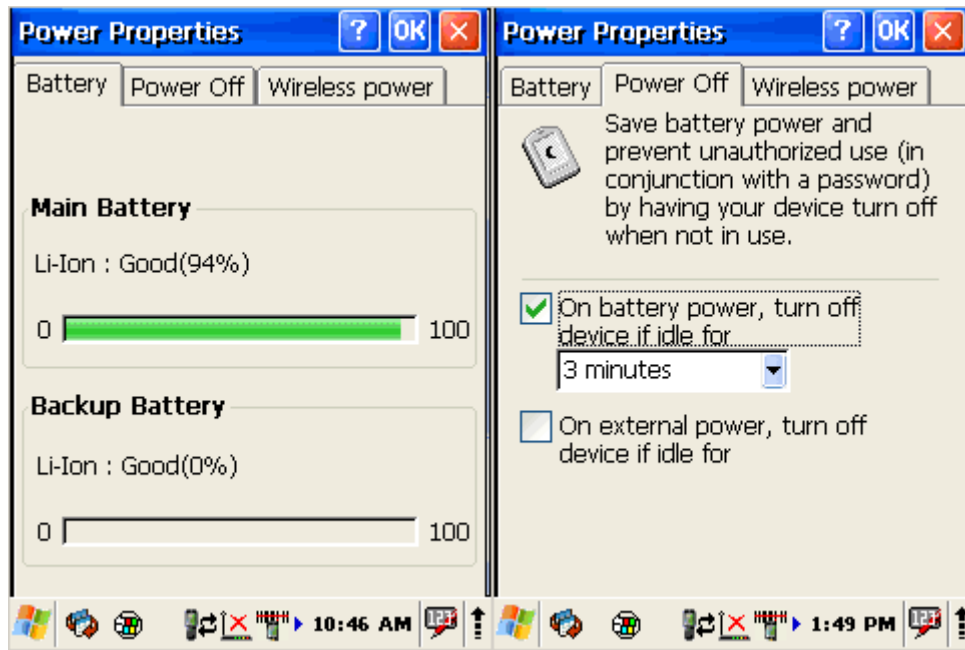
The PC Connection control panel determines how ActiveSync works with the PDA. To modify the default settings:

1. Select Start > Settings > Control Panel > PC Connection.
2. Select the first checkbox to enable direct connections to the desktop computer.
3. Tap the Change Connection button to modify the connection method from USB or Serial.
4. To exit the Change Connection dialog, press OK from the control bar, or press the <Enter> key on the keypad.

3.15. POWER CONFIGURATION



Power



To adjust power management settings,

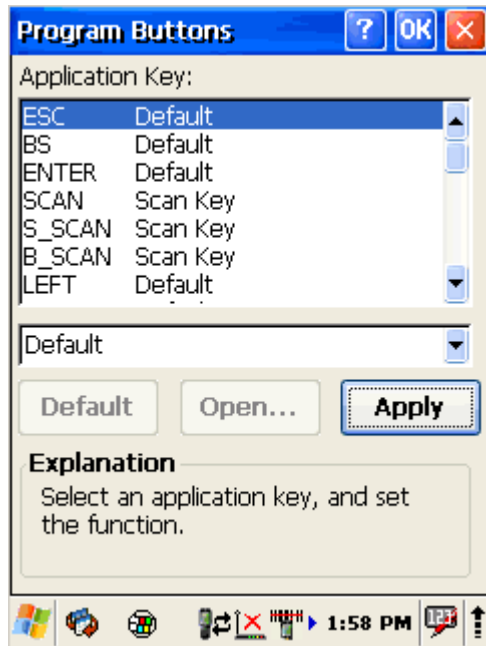
1. Select Start > Settings > Control Panel > Power.
Use this control panel to check the charge on the battery or to change the Power settings.
2. The **Battery** tab provides change level indicators for Main battery, and Backup battery.
3. In the **Power Off** tab set idle time to turn off.
4. In the **Wireless power** tab turn on/off wireless devices (Bluetooth and wifi)
5. To exit, press OK from the command bar, or press the <Enter> key on the keypad.

3.16. PROGRAMM BUTTONS



Program
Buttons

Select Start > Settings > Control Panel > Power



Select programmable button

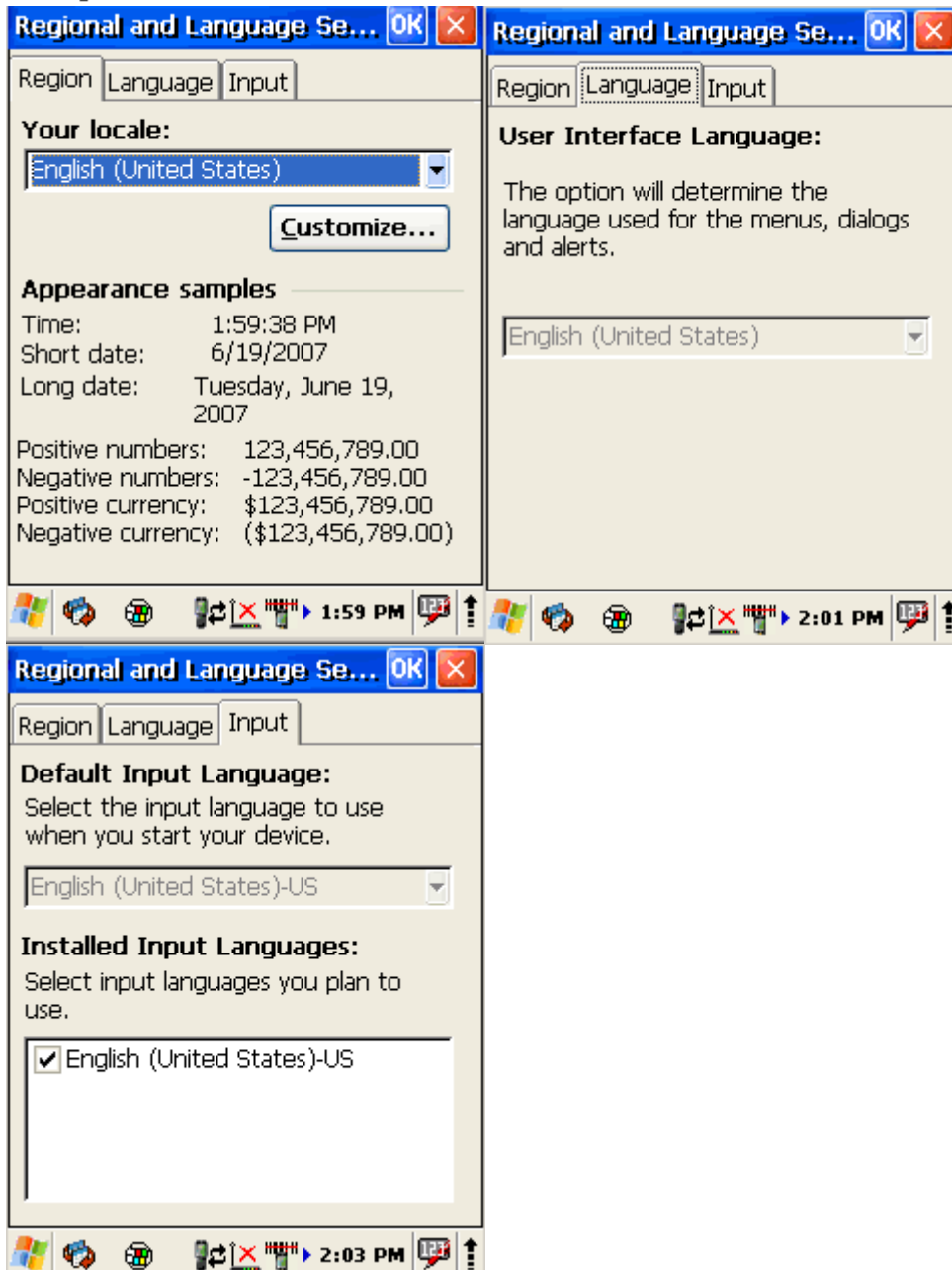
Chose its type:

- Default – button will be assigned
- No function – button does not have any functions
- Scan key – button is used as Scan key
- Application – click on Open button to select application to bind with this key

3.17. REGIONAL SETTINGS



Regional
Settings



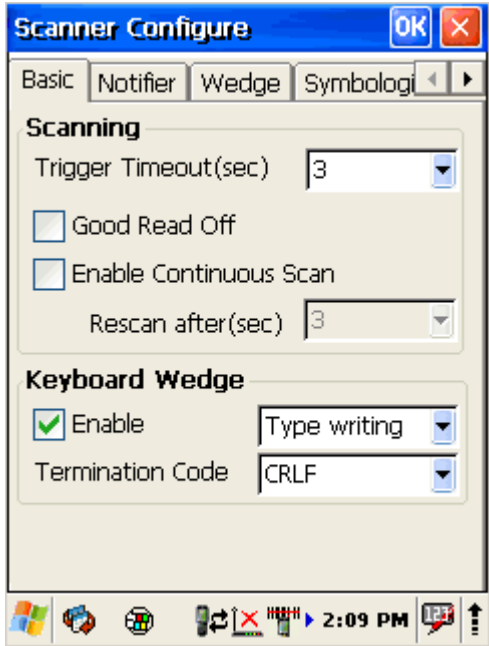
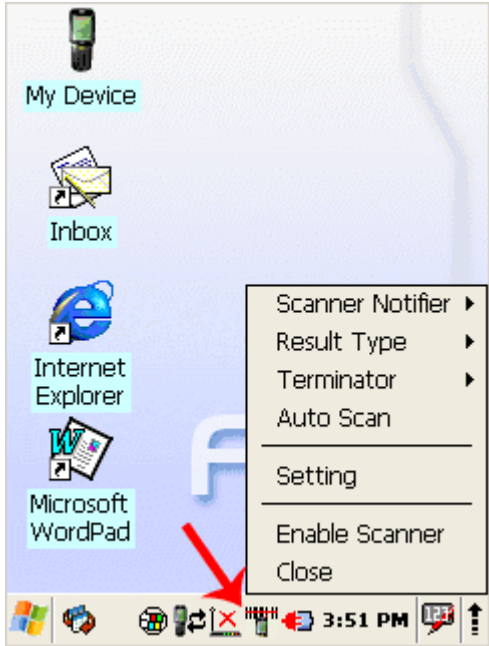
To change the Regional Settings defaults:

1. Select Start > Settings > Control Panel > Regional Settings.
2. Select the desired language/location.
3. Review the Appearance Samples in the bottom half of the screen.
Select the tab at the top for any settings you wish to change. Options to modify include Number, Currency, Time, and Date.
4. The Input Panel may open to facilitate data input.
5. Select input language
6. To exit Regional Settings, press OK from the control bar, or press the <Enter> key on the keypad.

3.18. SCANNER CONFIGURE



To change the Scanner Settings and bar code types, complete as follows:
Go to Start > Programs > Scanner > Quick ScanSet to open the bar code scanning application. The only indicator that the program is open is the bar code System Tray icon. Quick ScanSet starts automatically as device boots. Select/tap the bar code icon in the System Tray to open the menu shown on the left



Tab	Section	Option	Description
Basic	Scanning	Trigger timeout (sec)	Set scanner timeout time
		Good read off	Scanner will stop scanning after good read.
		Enable continuous scan	Scanner will scan continuous until if checked good read.
		Rescan after (sec)	Set rescan time if enabled continuous scan
	Keyboard wedge If enable	Enable	Check to enable keyboard wedge Options: "Type writing"; "Copy & paste" Select data input method according software you use
	Keyboard wedge - a hardware device or software program that interfaces with a computer to translate data read by a device other than a keyboard, such as a magnetic strip or bar code reader or other such scanning device, into keyboard data.	Termination code	Select the desired barcode end code from the pull down list
Notifier	Beep		
		Volume	Set sounds volume
		Succeed	Set sound to indicate good read
		Fail	Set sound to indicate bad read
	LED	Enable	Enable visual scan indicators
	Vibrator	Succeed:	Set devices vibration time after good read
Fail:		Set devices vibration time after bad read.	
Wedge	Barcode ID	Transmit Barcode ID	Enable to transmit barcode ID
	Label	Prefix	Enter labels prefix
		Suffix	Enter labels suffix
	Filter	Accept	Set filter conditions to accept
Deny		Set filter conditions to deny	
Symbologies	Select barcode types you want to read		

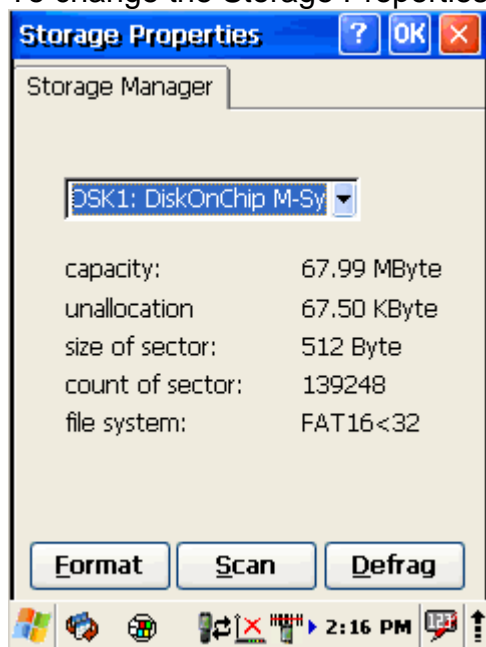
Details		Enable this code	Tap/enable this checkbox to enable the selected bar code type.
		Features	Select the desired features you wish to enable for that specific bar code type.
		Length	Set the minimum and maximum lengths from the pull-down lists. If the numbers are the same, acceptable bar codes will only be that length. Not all types will have this option enabled.
General		Try with Current Setting	This button is enabled only if you make changes to the current settings. 1. Tap the Try with Current Setting button. 2. Press the <Scan> key. 3. Check the result. 4. If you wish to keep the new current settings, select the Commit Current Setting button.
		Commit Current Setting	After modifying the current settings, if you wish to keep them, select the Commit Current Setting button.
		Load Factory Default	After modifying the current settings, if you wish to return to the factory defaults, tap the Load Factory Default button.
		Revert to last	After modifying the

		setting	current settings, if you wish to return to the previous settings, tap the Revert to Last Setting button.
--	--	---------	--

3.19. STORAGE MANAGER



To change the Storage Properties control panel default settings:



Insert secure digital (SD) storage card into the PDA
 Select Start > Settings > Control Panel > Storage Properties.

From the Storage manager pull-down list, select the desired storage device.

You can also format, perform scandisk and defrag.
 To save and exit the Storage Properties control panel, press OK from the control bar, or press the <Enter> key on the keypad.

Formatting the DiskOnChip will erase all files and programs stored in Flash Memory.



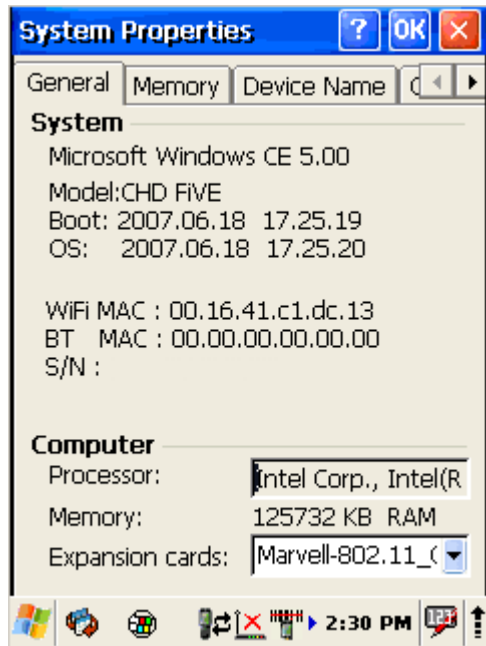
3.20. SYSTEM PROPERTIES



System

Refer to the System control panel for information related to the system.

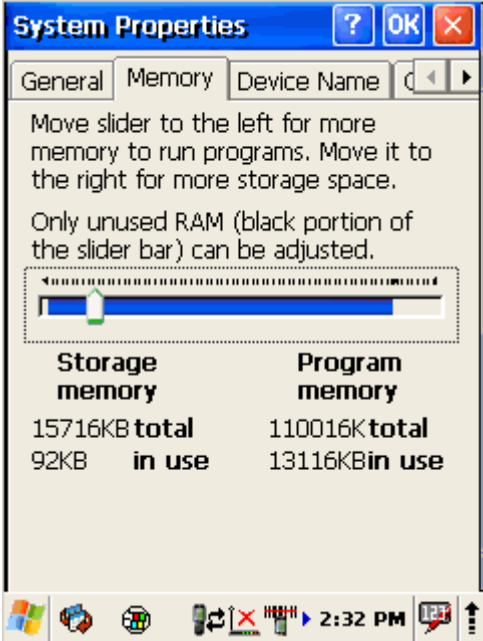
General



Select Start > Settings > Control Panel > System Properties > General tab to determine the following information about your PDA:

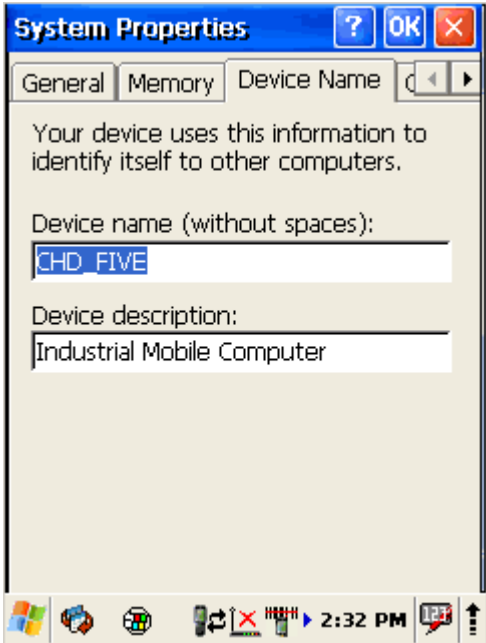
- Operating system
- Model
- Boot time
- OS load time
- WiFi MAC address
- Bluetooth MAC address
- Devices Serial Number

Memory



Move the slider to adjust memory allocation. Move slider to the left for more memory to run programs. Move it to the right for more storage space.

Device name



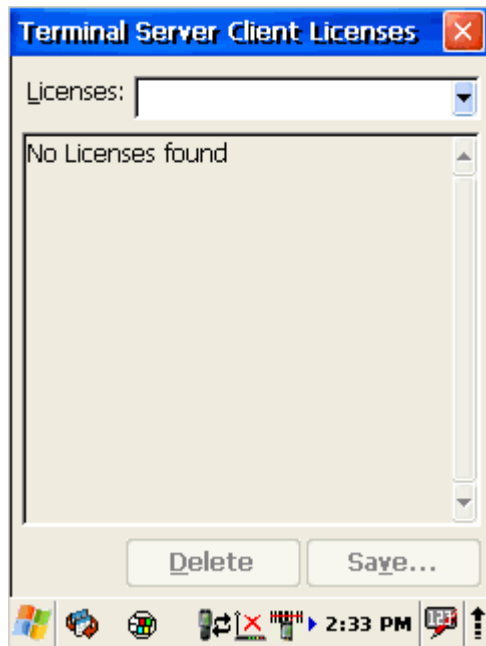
Your device uses this information to identify itself to other computers. The Input Panel will open to facilitate data entry.

3.21. TERMINAL SERVER CLIENT LICENCES



Terminal
Server Clie...

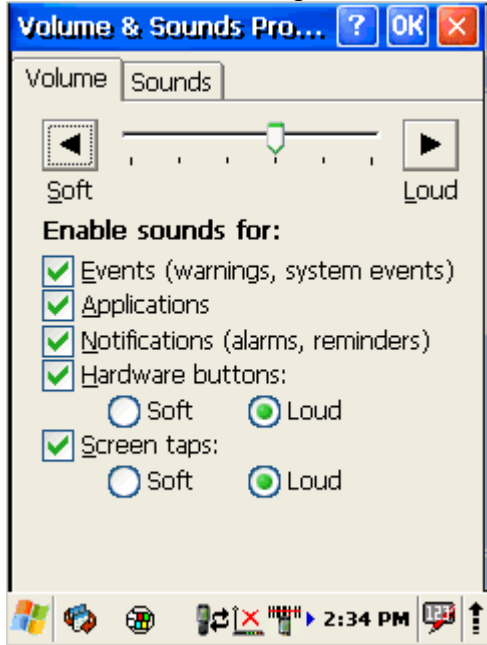
Select Start > Settings > Control Panel > Terminal server client licenses



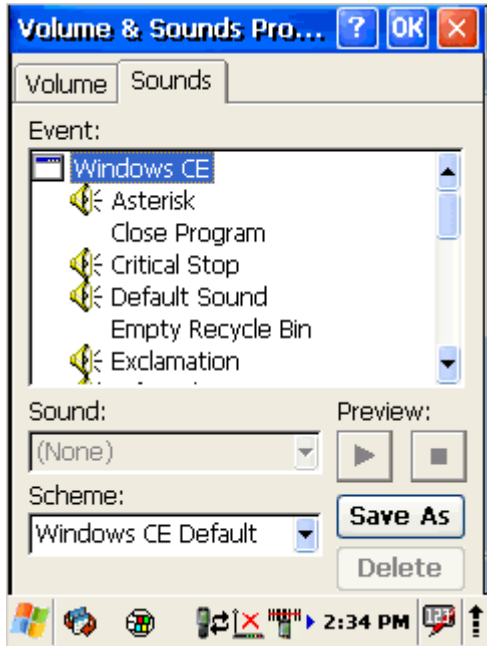
3.22. VOLUME & SOUNDS



Select Start > Settings > Control Panel > Volume & sound



Adjust sound volume and enable sounds.



Change sounds for different items.
Copy custom wav file into /windows directory and select it from list.

Regulatory Statements to be included in the Users Guide for Sputnik

USA-Federal Communications Commission (FCC)

This device complies with part 15 of the FCC Rules. Operation is subject to the following two conditions: (1) This device may not cause harmful interference, and (2) this device must accept any interference received, including interference that may cause undesired operation.

This equipment has been tested and found to comply with the limits for a Class B digital device, pursuant to Part 15 of FCC Rules. These limits are designed to provide reasonable protection against harmful interference in a residential installation. This equipment generates, uses, and can radiate radio frequency energy. If not installed and used in accordance with the instructions, it may cause harmful interference to radio communications. However, there is no guarantee that interference will not occur in a particular installation.

If this equipment does cause harmful interference to radio or television reception, which can be determined by tuning the equipment off and on, the user is encouraged to try and correct the interference by one or more of the following measures:

- Reorient or relocate the receiving antenna
- Increase the distance between the equipment and the receiver.
- Connect the equipment to outlet on a circuit different from that to which the receiver is connected.
- Consult the dealer or an experienced radio/TV technician for help.

Any changes or modifications not expressly approved by the party responsible for compliance could void the user's authority to operate the equipment.

Caution: Exposure to Radio Frequency Radiation.

To comply with FCC RF exposure compliance requirements, for mobile configurations, a separation distance of at least 20 cm must be maintained between the antenna of this device and all persons.

This device must not be co-located or operating in conjunction with any other antenna or transmitter.