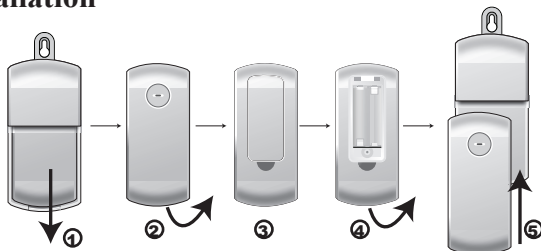


# Weather Station Transmitter

## Battery Installation



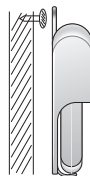
2. Reverse the outdoor temperature transmitter.
3. Unpack the battery cover.
4. Observe the correct polarity, install 2 x AA batteries. Make sure the batteries are firmly set inside the transmitter or start-up problems may occur. Close the battery cover.
5. Insert the transmitter into the bracket.

## Outdoor Remote Temperature Transmitter Mounting

The outdoor remote temperature transmitter can be hung onto a wall where there is a screw.

Note: 1) The remote temperature transmitter should be placed in a dry, shaded area. The remote temperature sensor has a range of 80 feet (25m). Any walls that the signal will have to pass through will reduce distance. An outdoor wall or window will have up to 10 feet of resistance. Your distance plus resistance should not exceed 80 feet in a straight line.

2) Fog and mist will not harm your remote temperature transmitter but direct rain MUST be avoided.



## FCC Statement

1. This device complies with Part 15 of the FCC Rules.  
Operation is subject to the following two conditions:
  - (1) This device may not cause harmful interference, and
  - (2) This device must accept any interference received, including interference that may cause undesired operation.
2. Changes or modifications not expressly approved by the party responsible for compliance could void the user's authority to operate the equipment.