

Polycom® OTX™ 300 HD Placement Plan

Open Telepresence Experience™



INDEX

1. Placement Plan with Optional Complete Experience kit
2. Placement Plan, Minimum Room Size
3. Electrical Plan
4. Elevation "A" of Wall Behind Video
5. Elevation "A" EMEA and APAC Power Location
6. Ceiling Microphone Array Placement
7. Optional Lighting Support Placement
8. Room Finishes, Power, HVAC and Weights
9. Room Center Section "A"
10. Optional Stabilization Brackets of Wall Behind Video
11. Optional Wall Mount Camera
12. Optional EYE-12 Document Camera Placement
13. Section "A" Optional EYE-12 Camera Placement
14. Video Wall and Table Assembly Views



POLYCOM®

www.polycom.com

3726-09883-001

HDWR Rev B 18-July-11

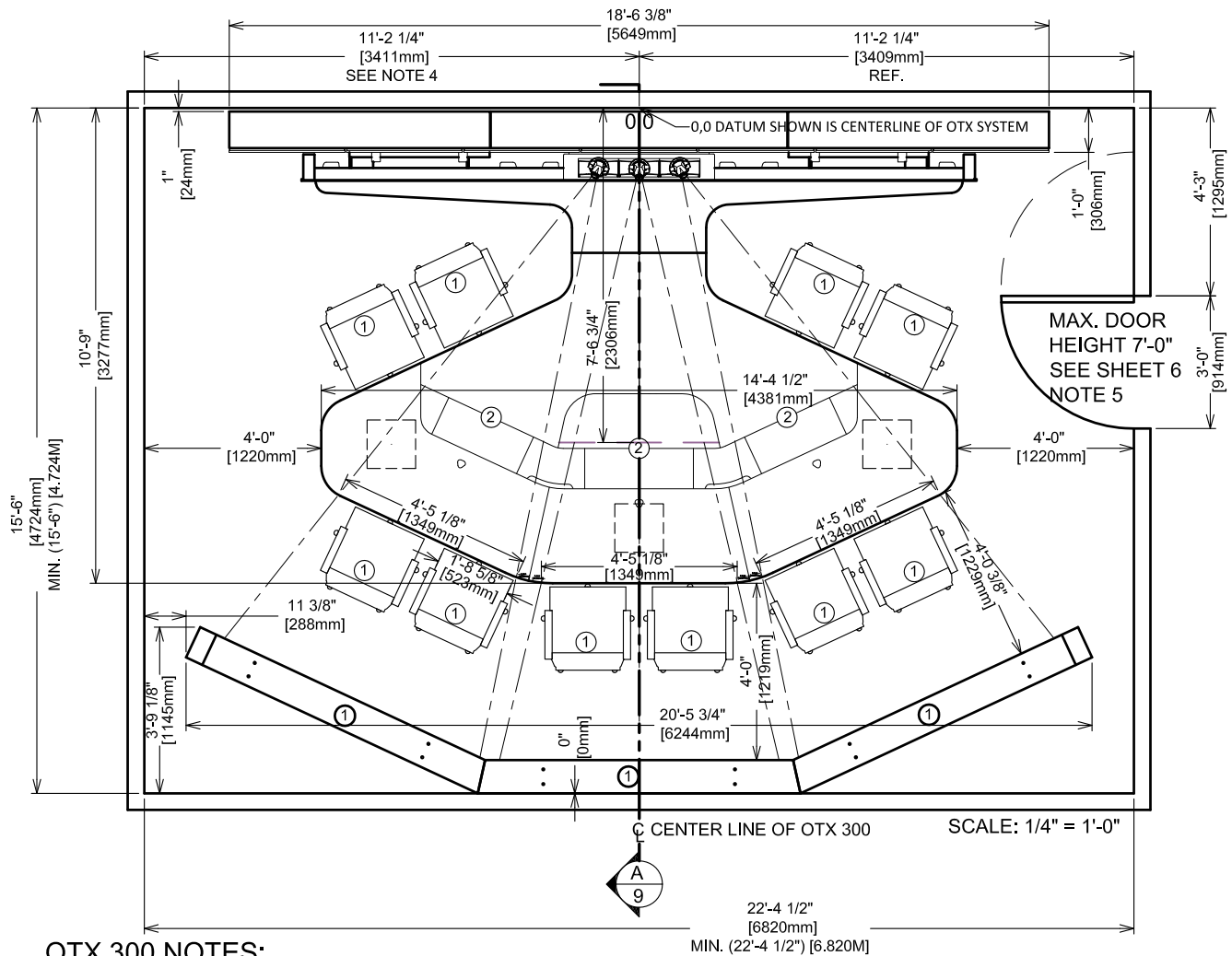
Polycom Headquarters: 4750 Willow Road, Pleasanton, CA 94588. (T) 1-800-POLYCOM (765-9266)

© 2010 Polycom, Inc. All rights reserved. Polycom and the Polycom logo are registered trademarks.

Cover

Polycom[®] OTX[™] 300 HD Placement Plan Shown With Optional "Complete Experience Kit"

Open Telepresence Experience[™]



OTX 300 NOTES:

1. Rear wall, chairs and lights ① shown on sheets 6 and 9 are all optional.

Option 1: With optional environment, includes Complete Experience Kit

Recommended room size is 22'-4 1/2" [6.820m] x 15'-6" [4.724m] x 8' 8" [2.642m] ceiling,

Minimum dimensions will be 22'-4 1/2" [6.820m] x 15'-6" [4.724m] x 8' [2.438m] ceiling. see sheet 2

Option 2: Without optional environment

Recommended room size is 22'-4 1/2" [6.820m] x 15'-6" [4.724m] x 8' 8" [2.642m] ceiling

Minimum dimensions will be 19' [5.791m] x 13' -9" [4.191m] x 8' [2.438m] ceiling. see sheet 2

2. Content monitors in table ② shown on this sheet, and microphone array locations above table as shown.

3. A. For additional room preparation information refer to "Preparing your room for the Polycom Open Telepresence Experience OTX 300 Installation" doc no. 3725-09853-002

B. For detailed Installation Guide for the OTX System refer to "Polycom Open Telepresence Experience OTX 300 Installation Guide" doc no. 3725-09742-002.

4. The center of OTX needs to be aligned with the existing ceiling grid and/or new grid for best lighting distribution. See sheet 6.

Prior to installation, verify that the current room ceiling grid (including sprinklers, smoke detectors, etc.) will not interfere with the OTX lighting Gripple locations or the ceiling microphone array installation locations (see pg 7). If necessary, adjust the OTX system center line or ceiling grid locations to accommodate the installation.



POLYCOM[®]

www.polycom.com

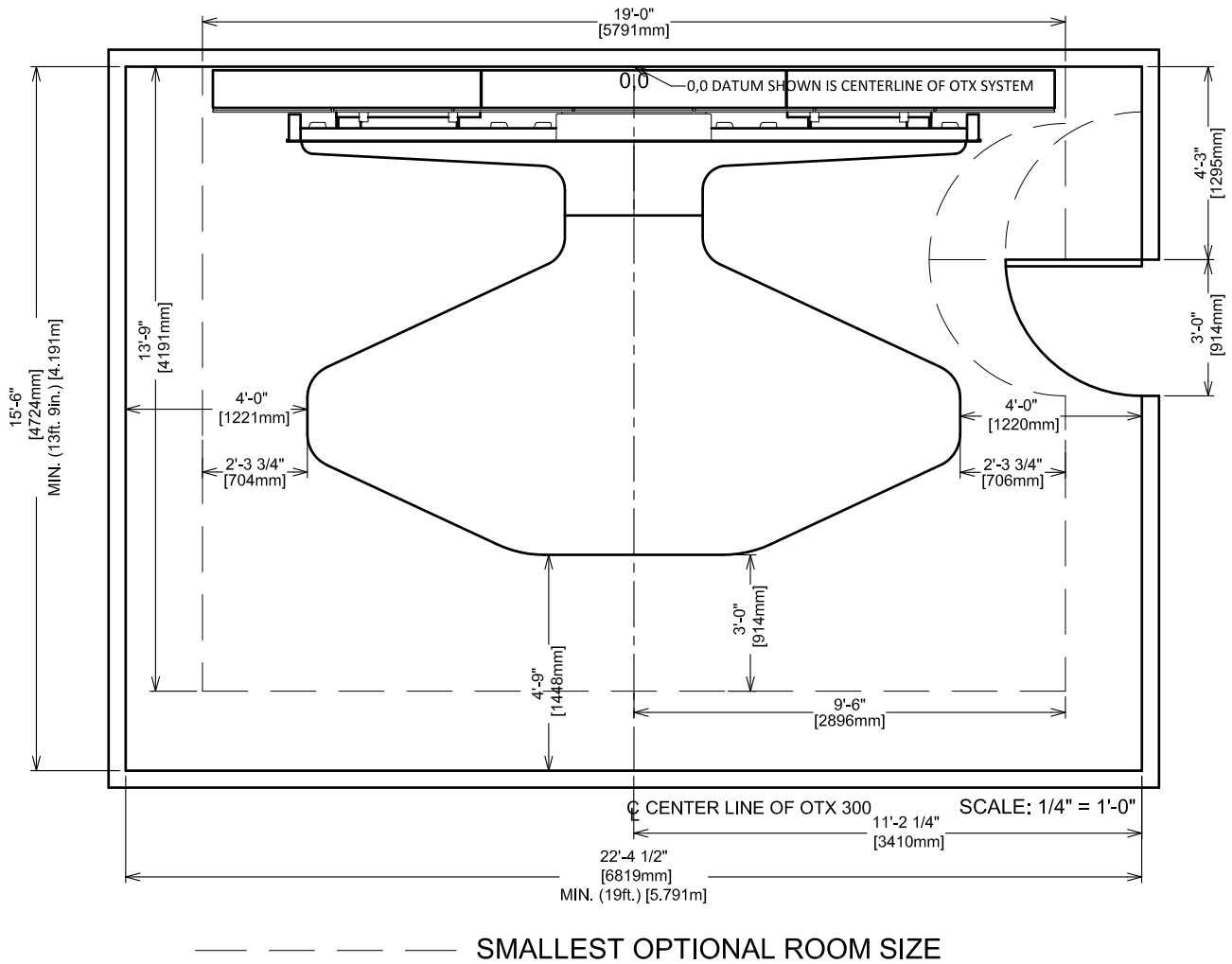
3726-09883-001

HDWR Rev B 18-July-11

Polycom Headquarters: 4750 Willow Road, Pleasanton, CA 94588. (T) 1-800-POLYCOM (765-9266)

© 2010 Polycom, Inc. All rights reserved. Polycom and the Polycom logo are registered trademarks.

Polycom® OTX™ 300 HD Placement Plan Shown Without Optional "Complete Experience Kit"



POLYCOM®

www.polycom.com

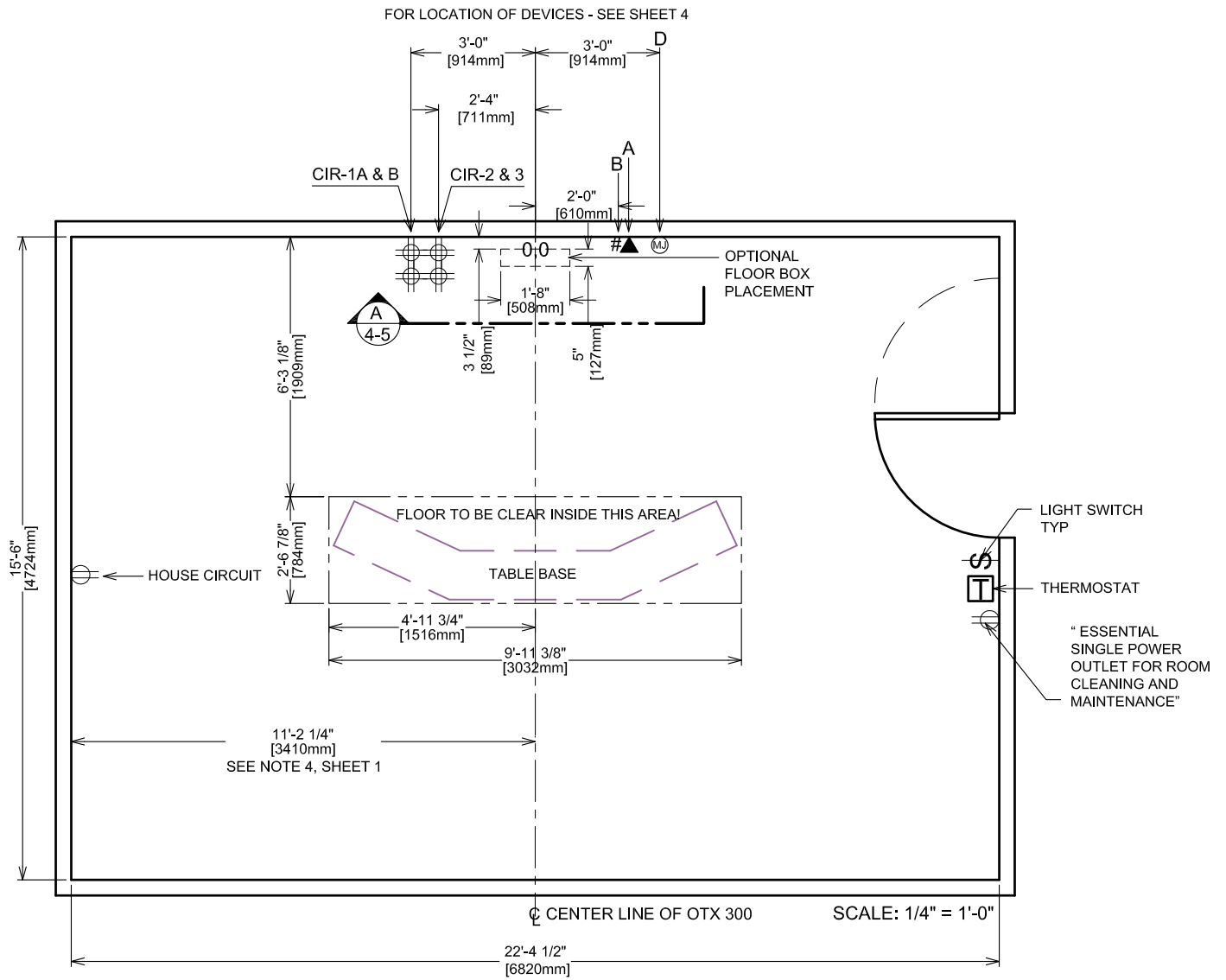
3726-09883-001

HDWR Rev B 18-July-11

Polycom Headquarters: 4750 Willow Road, Pleasanton, CA 94588. (T) 1-800-POLYCOM (765-9266)

© 2010 Polycom, Inc. All rights reserved. Polycom and the Polycom logo are registered trademarks.

Polycom® OTX™ 300 HD Electrical Plan



1. See sheets 12 and 13 if adding optional EYE-12 document camera

BEHIND VIDEO WALL OTX 300
 SUPPLIED AND INSTALLED BY CUSTOMER / CONTRACTOR
 PRIOR TO SUITE INSTALLATION. SEE SHEET 4

- A. (1) DIRECT IN DIAL ANALOG LINE SUPPLIED BY CUSTOMER TELCO (POTS)
- B. 1" CONDUIT FOR LAN CABLES
- CIR (3) 15 AMP. 120V QUAD AC POWER OUTLET FOR NALA AND (3) 10 AMPS. 220V QUAD FOR EMEA AND APAC
- D. MIC JACK WALL PLATE, 1 1/2" CONDUIT TO 3" ABOVE CEILING



www.polycom.com

3726-09883-001

HDWR Rev B 18-July-11

Polycom Headquarters: 4750 Willow Road, Pleasanton, CA 94588. (T) 1-800-POLYCOM (765-9266)
 © 2010 Polycom, Inc. All rights reserved. Polycom and the Polycom logo are registered trademarks.

Polycom® OTX™ 300 HD - Elevation "A"

OPTION 1: HOME RUN DEFAULT NETWORK SWITCH

WALL BEHIND OTX 300

SUPPLIED AND INSTALLED BY CUSTOMER / CONTRACTOR PRIOR TO SUITE INSTALLATION.

A. (1) DIRECT IN DIAL ANALOG LINE SUPPLIED BY CUSTOMER TELCO (POTS)

**B.** (15) ETHERNET CONNECTIONS. 1" CONDUIT PER BOX

C. NALA (4) QUAD AC POWER (16) OUTLET ON (3) DEDICATED 15 AMP. CIRCUITS
EMEA AND APAC (4) QUAD AC POWER (16) OUTLET ON (3) DEDICATED 10 AMP. CIRCUITS

IF CEILING MICROPHONE ARRAY IS USED.

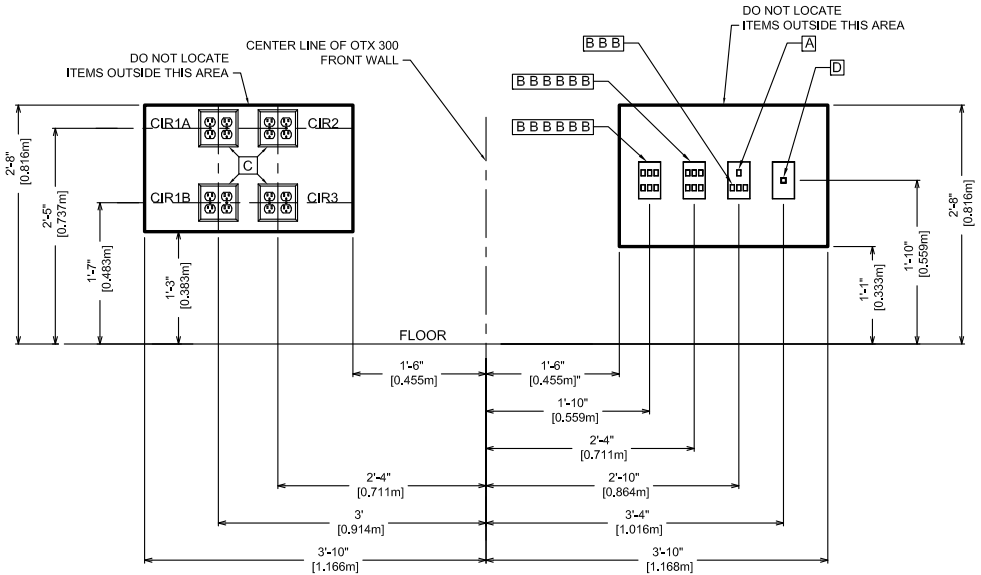
TO PREPARE FOR THE INSTALLATION OF THE CEILING MICROPHONE ARRAYS, AN ELECTRICIAN MUST DO THE FOLLOWING:

- INSTALL A SINGLE GANG JUNCTION BOX IN THE FRONT WALL OF THE ROOM.
- INSTALL A CONDUIT IN THE FRONT WALL OF THE ROOM. THE CONDUIT SHOULD EXTEND IN A STRAIGHT RUN FROM THE JUNCTION BOX TO THE PLENUM SPACE IN THE CEILING, AND SHOULD BE AT LEAST 1.2 IN (30 MM) IN DIAMETER.
- STUB UP THE CONDUIT (THAT IS, BEND IT APPROXIMATELY 90°) INTO THE PLENUM AREA.

WORK TO BE DONE BY CUSTOMER / CONTRACTOR PRIOR TO SUITE INSTALLATION

MIC. JACK WALL PLATE AND CABLE SUPPLIED AND INSTALLED BY POLYCOM.

(M) **D.** MIC JACK WALL PLATE, 1 1/2" CONDUIT TO 3" ABOVE CEILING



OPTION 2: CUSTOMER INSTALLED NETWORK SWITCH

WALL BEHIND OTX 300

SUPPLIED AND INSTALLED BY CUSTOMER / CONTRACTOR PRIOR TO SUITE INSTALLATION.

A. (1) DIRECT IN DIAL ANALOG LINE SUPPLIED BY CUSTOMER TELCO (POTS) 3/4" CONDUIT

**B.** (6) ETHERNET CONNECTIONS. 1" CONDUIT

C. NALA (4) QUAD AC POWER (16) OUTLET ON (3) DEDICATED 15 AMP. CIRCUITS
EMEA AND APAC (4) QUAD AC POWER (16) OUTLET ON (3) DEDICATED 10 AMP. CIRCUITS

IF CEILING MICROPHONE ARRAY IS USED.

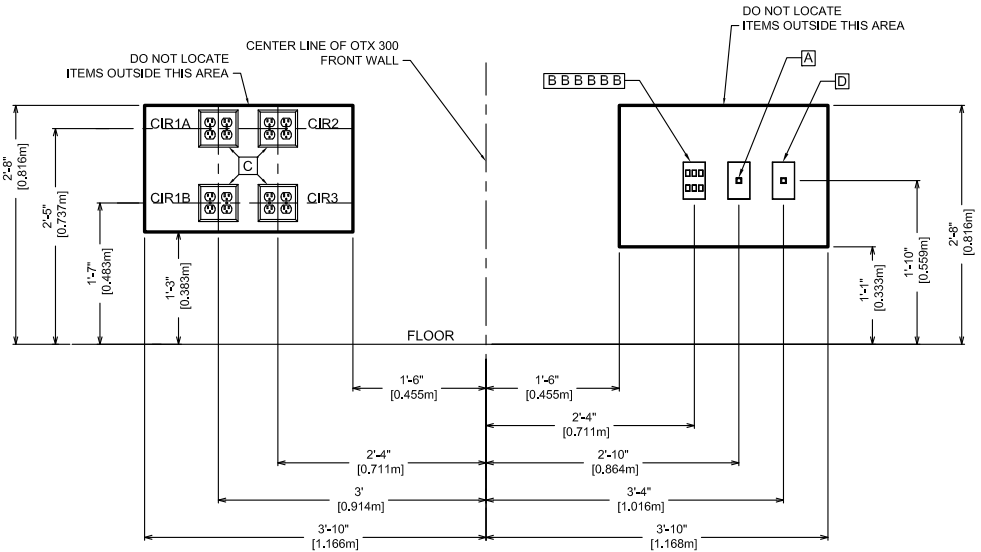
TO PREPARE FOR THE INSTALLATION OF THE CEILING MICROPHONE ARRAYS, AN ELECTRICIAN MUST DO THE FOLLOWING:

- INSTALL A SINGLE GANG JUNCTION BOX IN THE FRONT WALL OF THE ROOM.
- INSTALL A CONDUIT IN THE FRONT WALL OF THE ROOM. THE CONDUIT SHOULD EXTEND IN A STRAIGHT RUN FROM THE JUNCTION BOX TO THE PLENUM SPACE IN THE CEILING, AND SHOULD BE AT LEAST 1.2 IN (30 MM) IN DIAMETER.
- STUB UP THE CONDUIT (THAT IS, BEND IT APPROXIMATELY 90°) INTO THE PLENUM AREA.

WORK TO BE DONE BY CUSTOMER / CONTRACTOR PRIOR TO SUITE INSTALLATION

MIC. JACK WALL PLATE AND CABLE SUPPLIED AND INSTALLED BY POLYCOM.

(M) **D.** MIC JACK WALL PLATE, 1 1/2" CONDUIT TO 3" ABOVE CEILING



OPTIONAL EMEA AND APAC POWER PLACEMENT

SEE SHEET 5



POLYCOM®

www.polycom.com

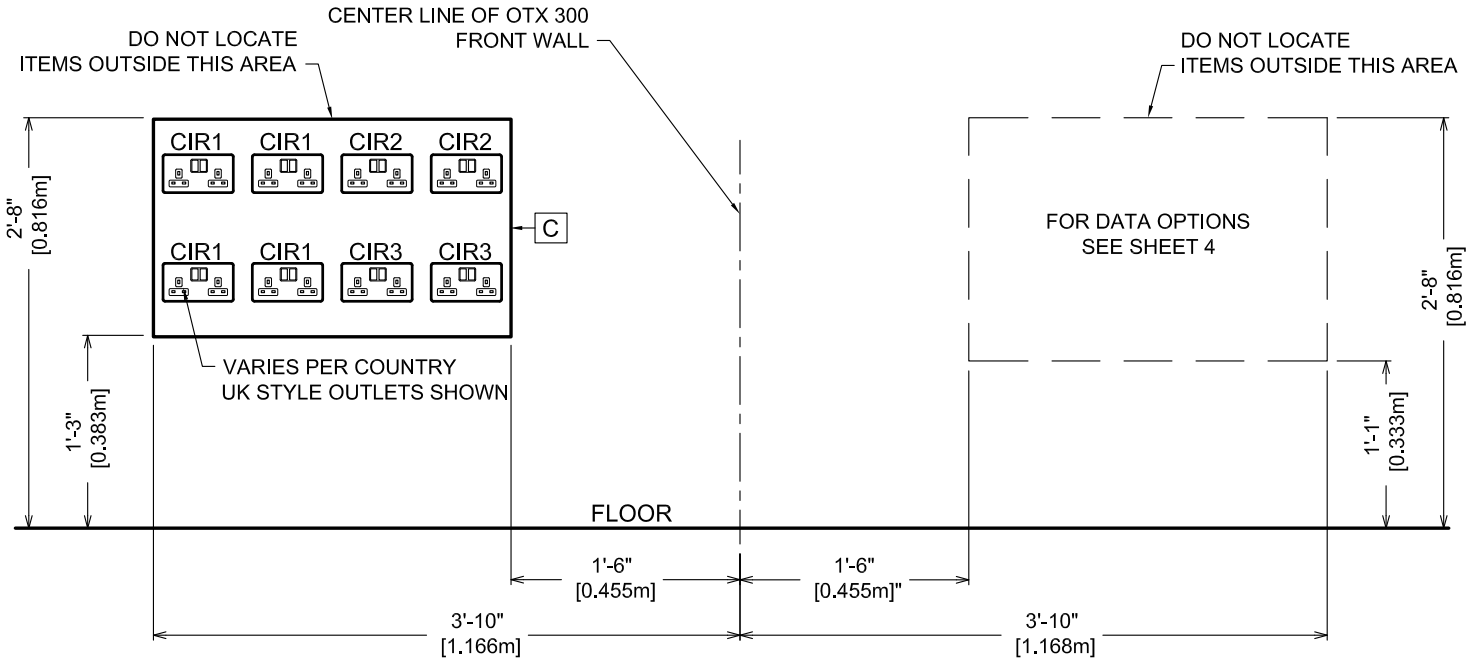
3726-09883-001

HDWR Rev B 18-July-11

Polycom Headquarters: 4750 Willow Road, Pleasanton, CA 94588. (T) 1-800-POLYCOM (765-9266)

© 2010 Polycom, Inc. All rights reserved. Polycom and the Polycom logo are registered trademarks.

Polycom® OTX™ 300 HD - Elevation "A"



OPTIONAL EMEA AND APAC POWER CONFIGURATIONS

WALL BEHIND OTX 300 - SEE SHEET 4 FOR INFO.

FOR DATA OPTIONS

WALL BEHIND OTX 300 - SEE SHEET 4 FOR INFO.



POLYCOM®

www.polycom.com

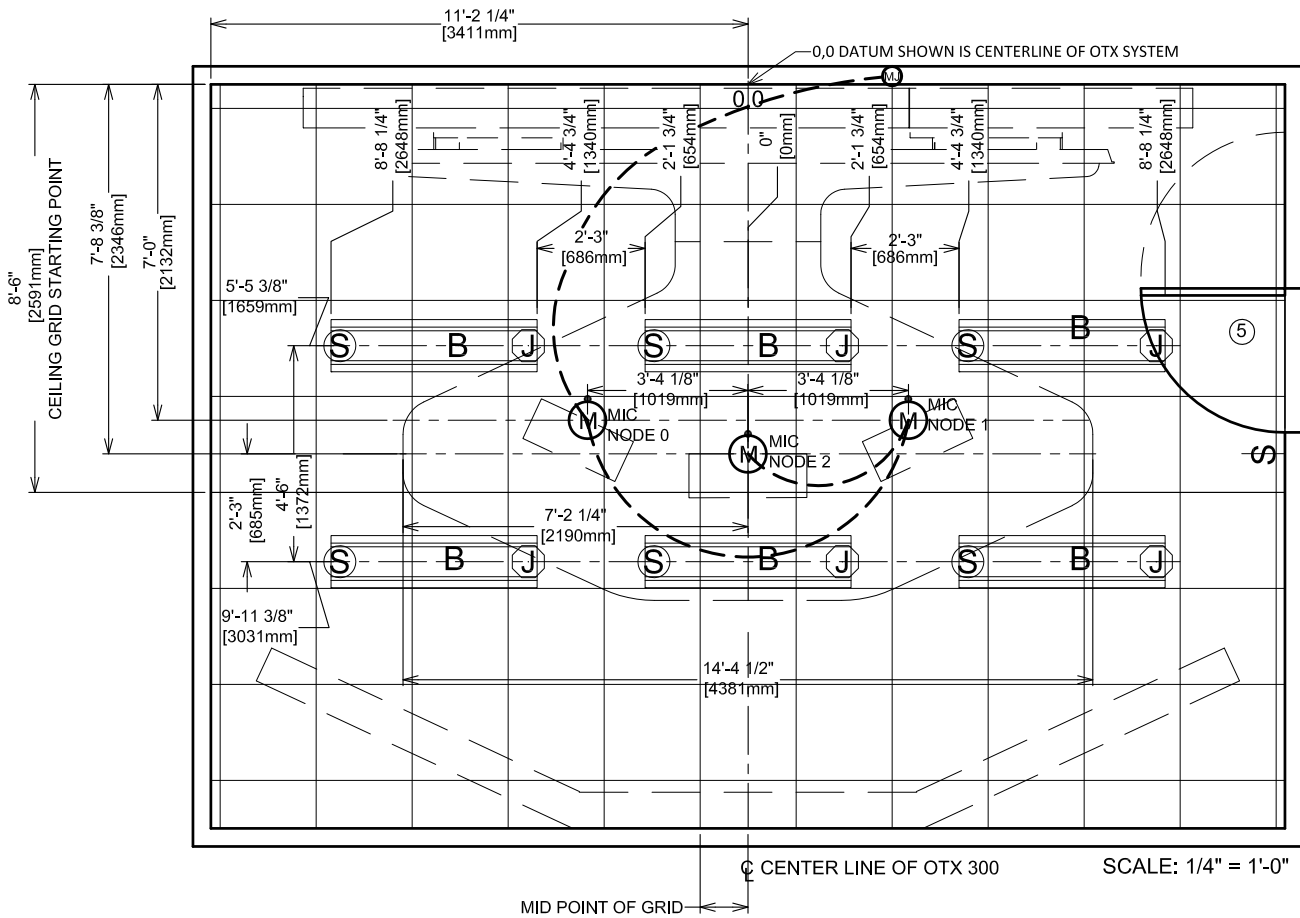
3726-09883-001

HDWR Rev B 18-July-11

Polycom Headquarters: 4750 Willow Road, Pleasanton, CA 94588. (T) 1-800-POLYCOM (765-9266)

© 2010 Polycom, Inc. All rights reserved. Polycom and the Polycom logo are registered trademarks.

Polycom® OTX™ 300 HD Ceiling Microphone Array Placement Optional Lighting Placement



NOTES

1. THE CUSTOMER / CONTRACTOR IS RESPONSIBLE FOR CEILING MICROPHONE ARRAY - CONDUIT AND WALL BOX SHOULD BE INSTALLED PRIOR TO THE OTX HD 300M SUITE BEING INSTALLED.

MICROPHONE WALL PLATE AND PLENUM RATED CABLE WILL BE SUPPLIED AND INSTALLED BY POLYCOM. REFER TO THE SETTING UP THE POLYCOM HDX CEILING MICROPHONE ARRAY SERIES, FROM THE OTX INSTALL GUIDE
2. 8 FT 8 IN IS RECOMMENDED CEILING HEIGHT, 8 FT IS MIN , 14 FT IS MAX
3. 9' AND HIGHER CEILING WILL REQUIRE OPTIONAL MICROPHONE CABLE PART 2457-26765-072 FOR WHITE.
4. FOR OPTIONAL LIGHTING SEE SHEET 7 FOR MOUNTING LOCATION.
5. WHEN USING THE OPTIONAL LIGHTING THE DOOR HEIGHT MUST BE REVIEWED FOR CLEARANCE.

- (S)** THIS IS THE OTHER END FOR LIGHT FIXTURE SUPPORT
- (B)** OPTIONAL FIXTURES SHOWN: WEIGHT 10 LBS. [4.54KG] FLUORESCENT, LAMP 4100K
- (J)** OUTLET BACK BOX FOR LIGHT FIXTURE SUPPORT
- (M)** CEILING (3) MICROPHONES ARRAY LOCATE 6'-10" [2.083m] - 7'-0" [2.134m] A.F.F., ORIENT DOT ON MIC. TO FACE THE VIDEO WALL.
- (MJ)** OUTLET BACK BOX FOR MIKE CABLE



POLYCOM®

www.polycom.com

3726-09883-001

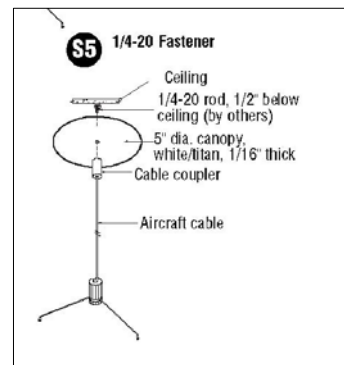
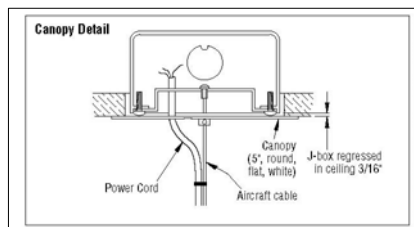
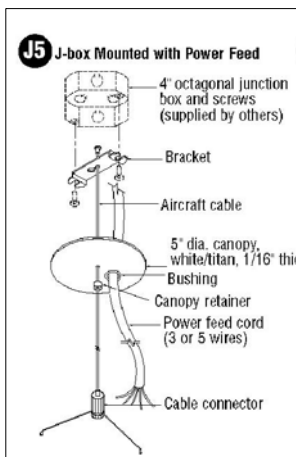
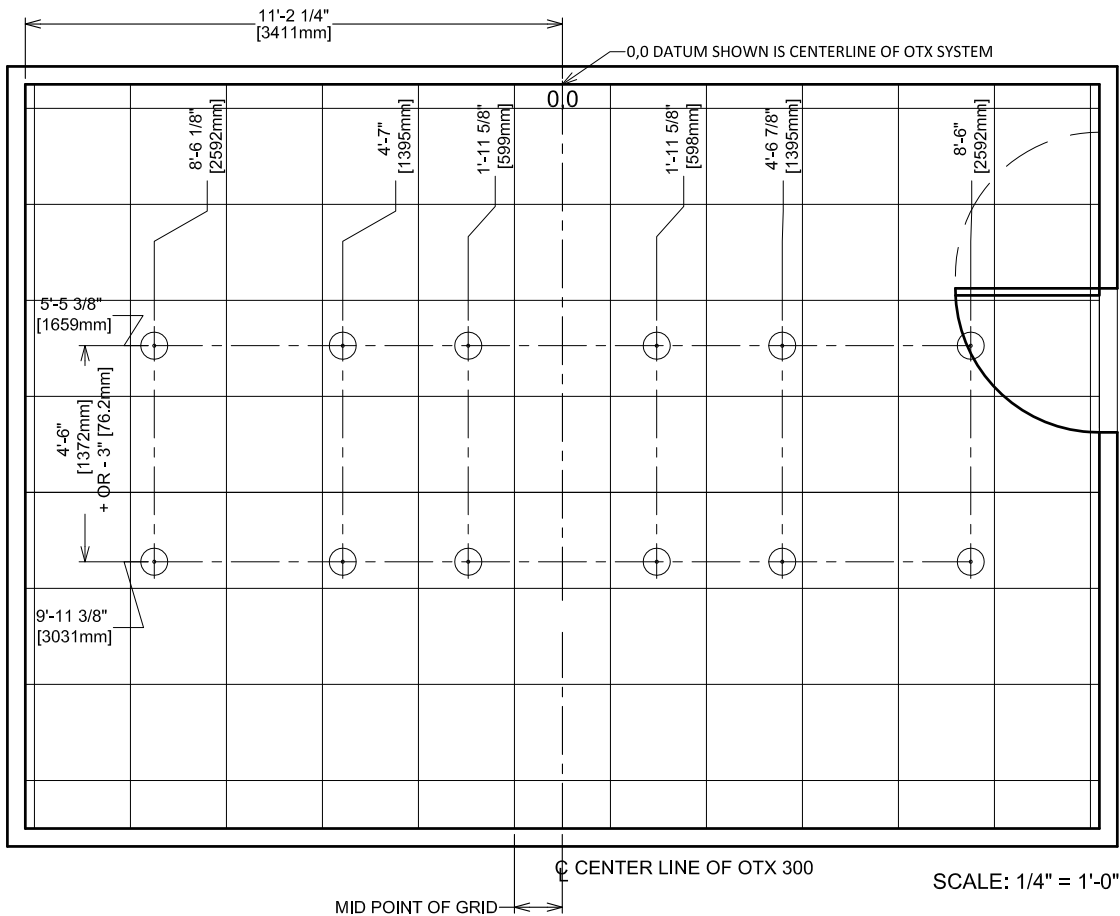
HDWR Rev B 18-July-11

Polycom Headquarters: 4750 Willow Road, Pleasanton, CA 94588. (T) 1-800-POLYCOM (765-9266)

© 2010 Polycom, Inc. All rights reserved. Polycom and the Polycom logo are registered trademarks.

Polycom[®] OTX[™] 300 HD

Optional Lighting Support Placement



NOTES

1. CUSTOMER / CONTRACTOR TO VERIFY CEILING GRID, HVAC SUPPLIES AND RETURNS, FIRE SPRINKLER HEADS LOCATIONS, ETC.. TO ENSURE THERE ARE NO INTERFERENCES WITH THE OTX INSTALLATION. IF THERE IS, THEY WILL NEED TO RELOCATE THE GRID OR POSSIBLY THE OTX SYSTEM.
2. LIGHT FIXTURE NEED TO BE KEPT ON CENTER LINE WITH EACH OTHER, THE TOLERANCE BETWEEN LIGHT FIXTURES CAN BE + OR - 3" [76.2MM].
3. S=S5 AND J=J5 SUPPORT POINTS FOR LIGHT FIXTURES
4. EACH LIGHT FIXTURE HAS 2 POINTS FOR HANGING.



POLYCOM[®]

www.polycom.com

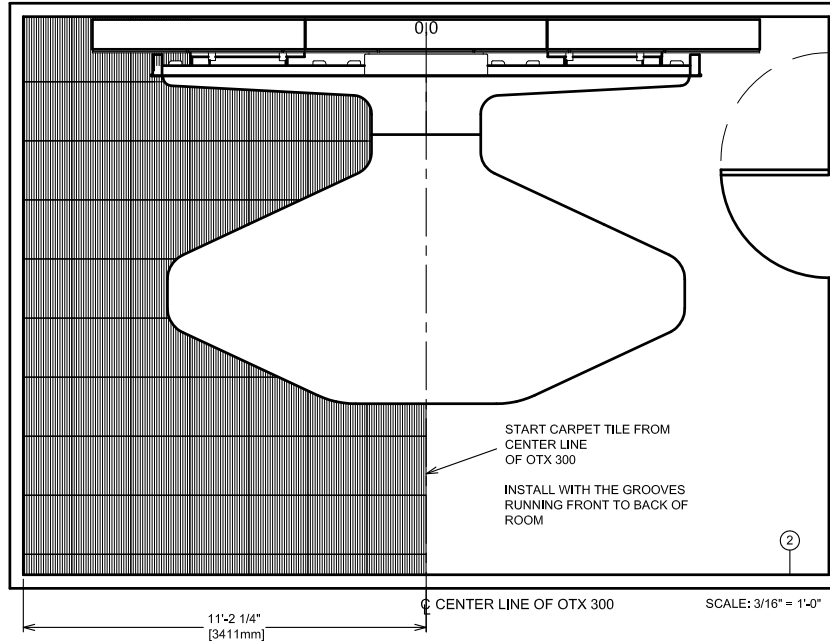
3726-09883-001

HDWR Rev B 18-July-11

Polycom Headquarters: 4750 Willow Road, Pleasanton, CA 94588. (T) 1-800-POLYCOM (765-9266)

© 2010 Polycom, Inc. All rights reserved. Polycom and the Polycom logo are registered trademarks.

Polycom® OTX™ 300 HD Interior Finishes



OTX 300 RECOMMENDED ROOM FINISHES:

- CARPET: INSTALL INTERFACE FLOR - TECTONICS STYLE # 141370250H COLOR #100060 50x50cm CARPET SQUARES AND/OR EQUIVALENT, INCLUDING COVERING ANY EXISTING FLOOR BOXES. CARPET SQUARES SHOULD BE INSTALLED IN AN ALIGNED "BRICK" PATTERN.
 - RECOMMENDED OPTION: PAINT FRONT AND REAR WALLS BEHR ULTRA PURE WHITE 7050 INTERIOR EGG SHELL FINISH ENAMEL*
PAINT SIDE WALLS BEHR PEWTER MUG 770E-3 LOW LUSTER EGG SHELL FINISH ENAMEL*

2ND PAINT OPTION: PAINT SIDE WALLS BENJAMIN MOORE NOVEMBER SKIES 2128-50 EGG SHELL FINISH ENAMEL*
WITHOUT THE OTX COMPLETE EXPERIENCE KIT, THE RECOMMENDED FINISH FOR THE ROOM REAR WALL IS:
BENJAMIN MOORE NOVEMBER SKIES 2128-50 EGG SHELL FINISH OR BEHR PEWTER MUG 770E-3 LOW LUSTER EGG SHELL FINISH.
- * LATEX PAINT VERSE ENAMEL BASED INTERIOR PAINT MAY BE USED BASED ON CUSTOMER PREFERENCE. (SEE OTX 300 REV B HDWR ROOM PREP GUIDE, THIS HAS MORE DETAIL REGARDING WALL COLORS, ETC...)
- ACOUSTICAL CEILING TILE 2X2 [600mmX600mm].

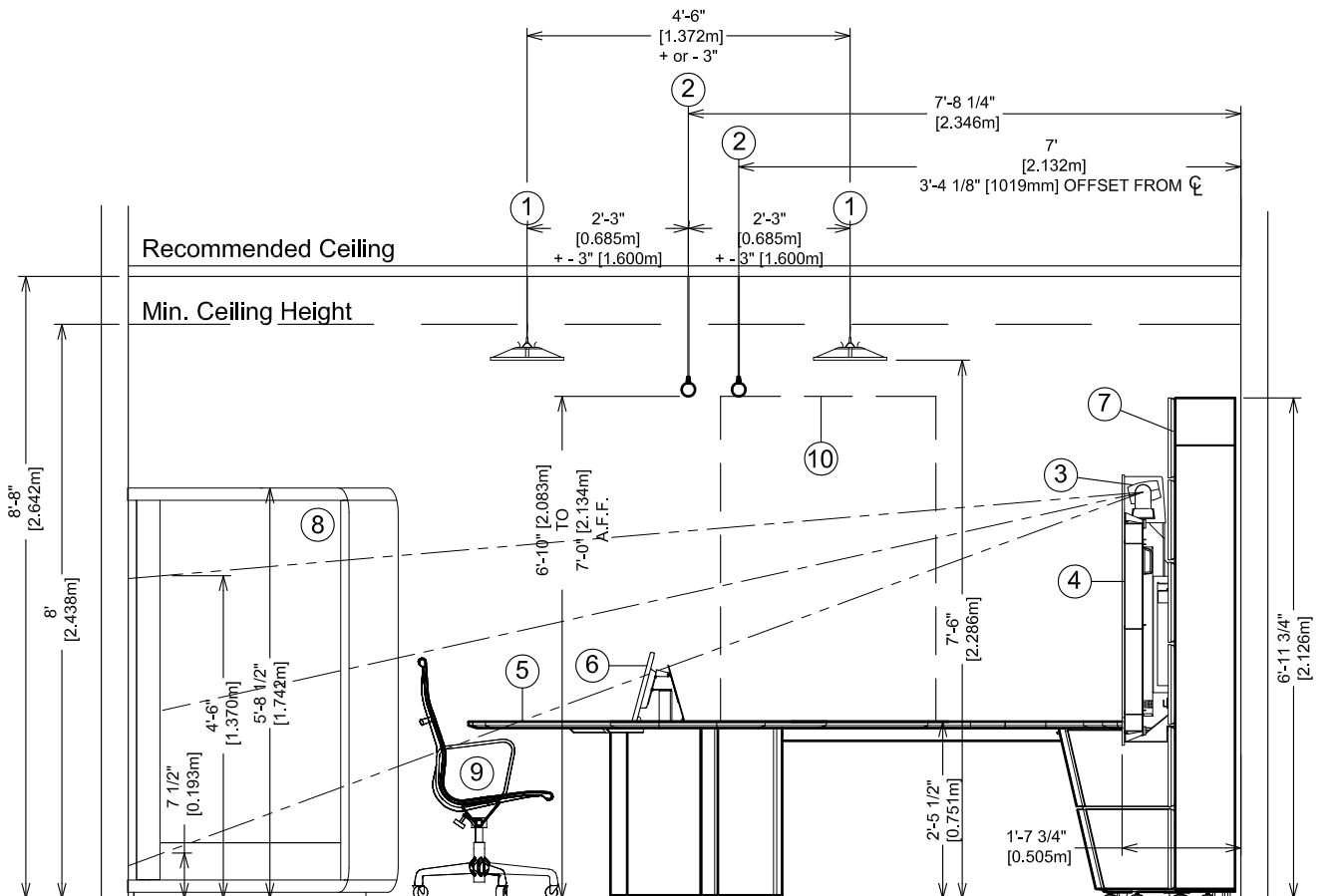
Power & Cooling			
	Total Power (Watts)	BTUs/Hour	Cooling in Tons
Standby (Components off except rack components and cameras)	300	1025	.09
In Use (Max call rate with Content and doc sharing)	2000	6824	.57
Maximum (system will not exceed)	2500	8530	.71
Optional Lighting (part of the Complete Experience Kit)	810	2764	.23

Note that this table includes only the OTX components and not the participants, laptops, and lighting.

Total Installed Weight				
OTX 300	Units		Area	Avg. Static Load lb/ft ² - kg/m ²
Video Wall/ Equip Rack	lbs	1216 lbs	26 sq ft	47 lb/ft
	kg	553.2 kg	2.42 sq m	229 kg/m
Multipurpose Conference Table	lbs	656 lbs	81 sq ft	8 lb/ft
	kg	298.1 kg	7.52 sq m	40 kg/m
Rear Wall	lbs	843 lbs	17 sq ft	50 lb/ft
	kg	382.9 kg	1.54 sq m	248 kg/m

HDWR Rev B 18-July-11

Polycom[®] OTX[™] 300 HD Room Center Section "A"



SCALE: 3/8" = 1'-0"

1. Optional Fixtures "B" Shown: Suspended Light Fixture Secured to Deck above, with Lamp 4100K
2. Ceiling Microphone Array 6'-10" [2.083m] to 7' 0" [2.134m] A.F.F.
3. EagleEye II Cameras
4. Visual HD Video Monitor
5. Table Top
6. Pop-up Content Monitor
7. Video Wall
8. Optional Complete Experience Kit (Rear Wall Panel System Shown)
9. Optional Chair Shown
10. Door Outline, Max. Door Height 7'-0" , See Sheet 6, Note 5.



POLYCOM[®]

www.polycom.com

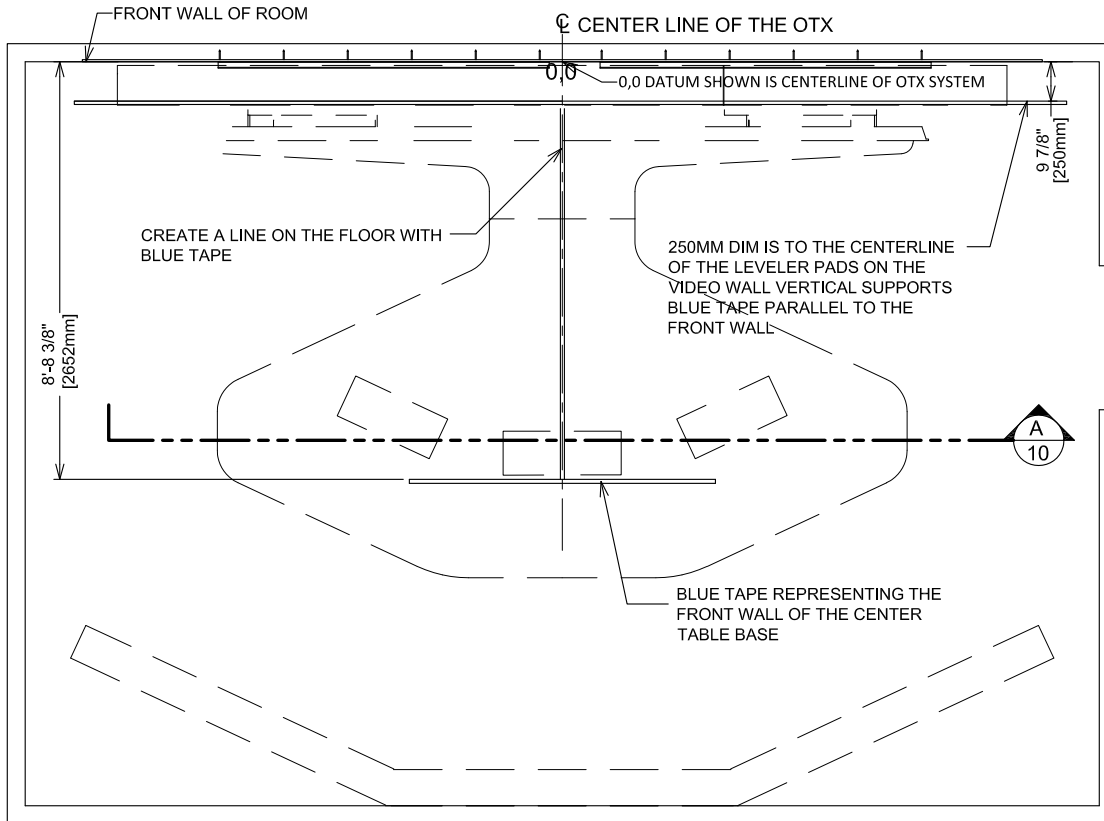
3726-09883-001

HDWR Rev B 18-July-11

Polycom Headquarters: 4750 Willow Road, Pleasanton, CA 94588. (T) 1-800-POLYCOM (765-9266)

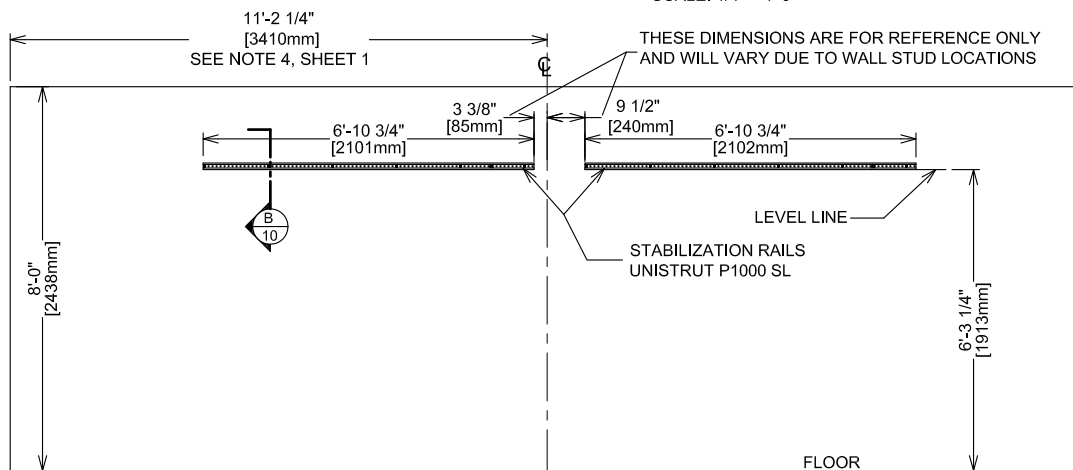
© 2010 Polycom, Inc. All rights reserved. Polycom and the Polycom logo are registered trademarks.

Polycom[®] OTX[™] 300 HD Optional Stabilization Brackets



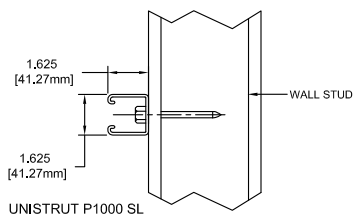
FLOOR PLAN VIEW

SCALE: 1/4" = 1'-0"



ELEVATION "A"

SCALE: 1/4" = 1'-0"



SECTION "B"

N.T.S.



POLYCOM[®]

www.polycom.com

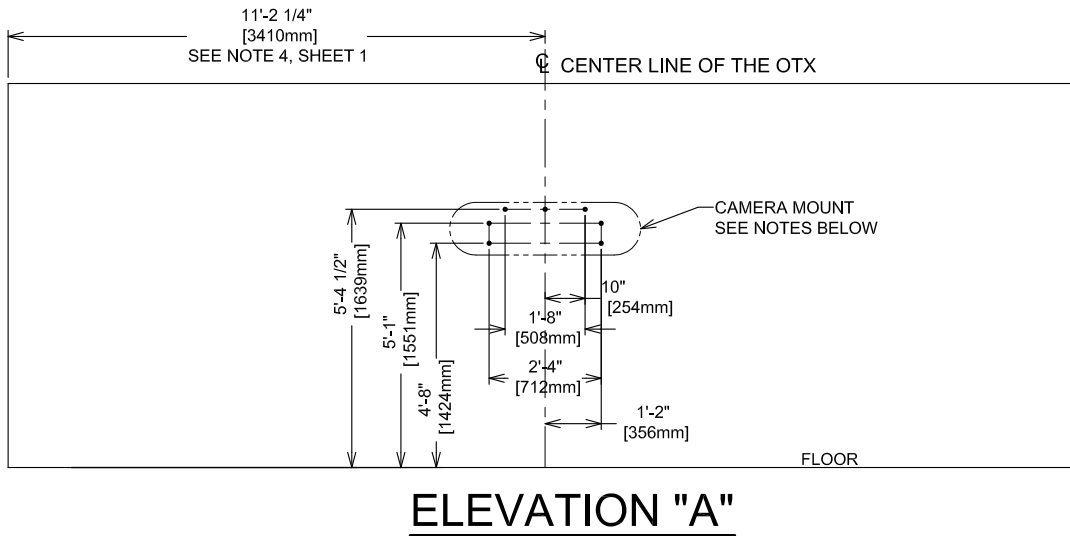
3726-09883-001

HDWR Rev B 18-July-11

Polycom Headquarters: 4750 Willow Road, Pleasanton, CA 94588. (T) 1-800-POLYCOM (765-9266)

© 2010 Polycom, Inc. All rights reserved. Polycom and the Polycom logo are registered trademarks.

Polycom[®] OTX[™] 300 HD Optional Wall Mount Camera



NOTES:

WALL MUST BE STABLE AND FREE FROM MOVEMENT!

RECOMMENDED HARDWARE NEEDED FOR:

1) DRYWALL:

- A) 1/4-20 TOGGLE ANCHOR TO POLYCOM PART NUMBER: 1650-28296-001 (QTY: 7x)
- B) 1/4-20 SCREW TO POLYCOM PART NUMBER: 1601-52020-001 (QTY: 7x)
- C) 1/4" WASHER TO POLYCOM PART NUMBER: 1602-61465-001 (QTY: 7x)

2) WOOD STRUCTURE:

- A) LAG SCREW TO POLYCOM PART NUMBER: 1601-12988-001 (QTY: 7x)
- B) 1/4" WASHER TO POLYCOM PART NUMBER: 1602-61465-001 (QTY: 7x)

3) MASONRY WALLS:

- A) CONCRETE ANCHOR TO POLYCOM PART NUMBER: 1650-28889-001 (QTY: 7x)
- B) 1/4" WASHER TO POLYCOM PART NUMBER: 1602-61465-001 (QTY: 7x)



POLYCOM[®]

www.polycom.com

3726-09883-001

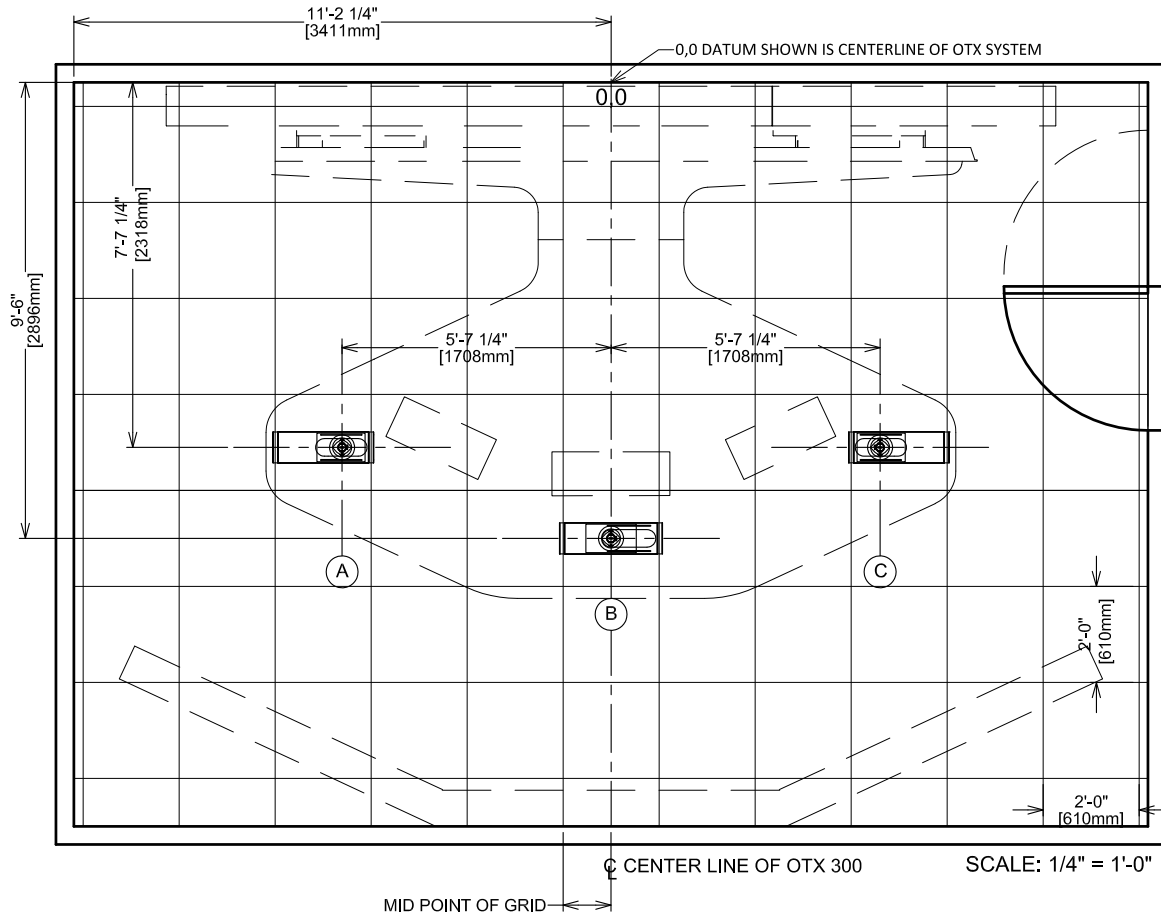
HDWR Rev B 18-July-11

Polycom Headquarters: 4750 Willow Road, Pleasanton, CA 94588. (T) 1-800-POLYCOM (765-9266)

© 2010 Polycom, Inc. All rights reserved. Polycom and the Polycom logo are registered trademarks.

Polycom[®] OTX[™] 300 HD

Optional Document Camera Placement



NOTES

MIN. CEILING HEIGHT IS NOT TO BE LESS THAN 8'-8" [2641.6mm]
 MAX. CEILING HEIGHT IS NOT TO BE MORE THAN 12'-0" [3657.6mm]

1. THE OPTIONAL DOCUMENT CAMERA LOCATIONS A, B and C.
2. CEILING GRID TO 2X2 AND/OR 2X4
3. TILE BRIDGE CEILING MOUNT RECOMMENDED POLYCOM p/n = 1662-63372-001 (REQUIRED FOR CEILING TILE INSTALLATION)
4. DOCUMENT CAMERA WILL USE POWER BRICK WITH POWER OVER ETHERNET (POE) CONNECTION TO VIDEO WALL OUTLETS.
 SEE DOC CAMERAS INSTALLATION GUIDE FOR WIRING DIAGRAM AND INSTALLATION INSTRUCTIONS.



POLYCOM[®]

www.polycom.com

3726-09883-001

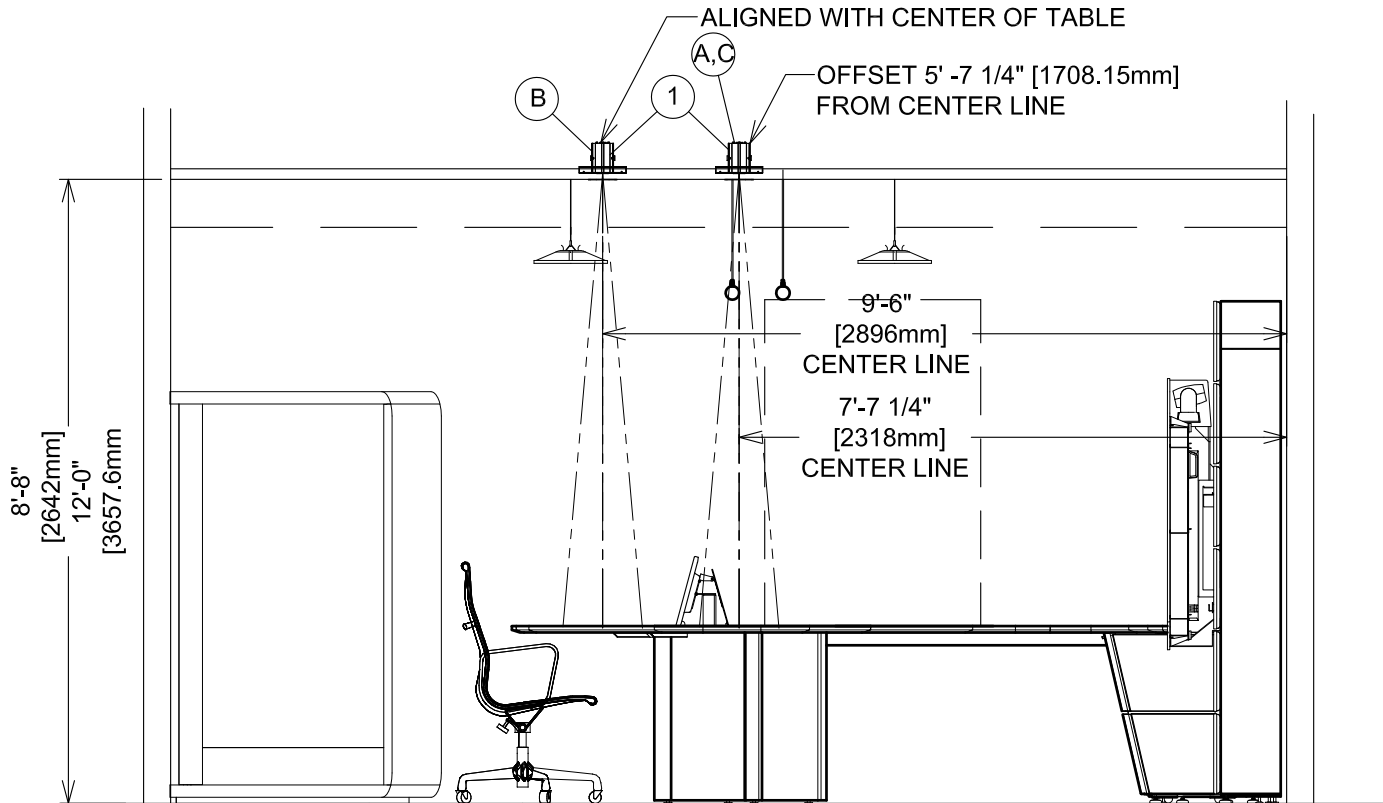
HDWR Rev B 18-July-11

Polycom Headquarters: 4750 Willow Road, Pleasanton, CA 94588. (T) 1-800-POLYCOM (765-9266)

© 2010 Polycom, Inc. All rights reserved. Polycom and the Polycom logo are registered trademarks.

Polycom® OTX™ 300 HD

Optional EYE-12 Document Camera Placement



1. Optional Document Camera Locations A and C are offset from center line
2. Document Camera Location B is on Center Line



POLYCOM®

www.polycom.com

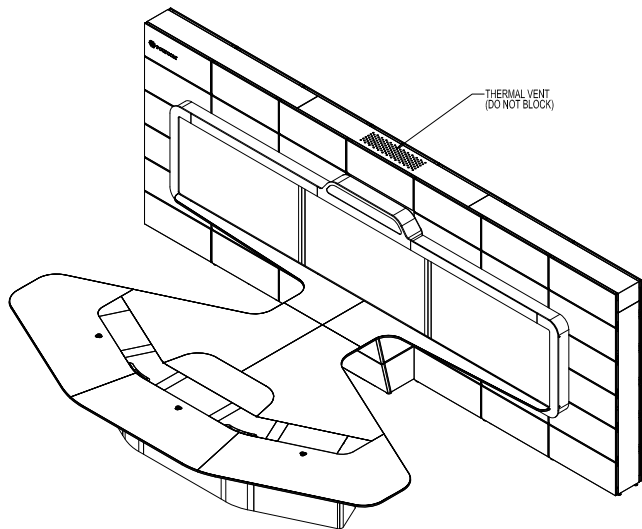
3726-09883-001

HDWR Rev B 18-July-11

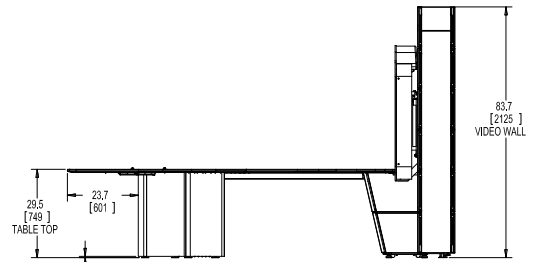
Polycom Headquarters: 4750 Willow Road, Pleasanton, CA 94588. (T) 1-800-POLYCOM (765-9266)

© 2010 Polycom, Inc. All rights reserved. Polycom and the Polycom logo are registered trademarks.

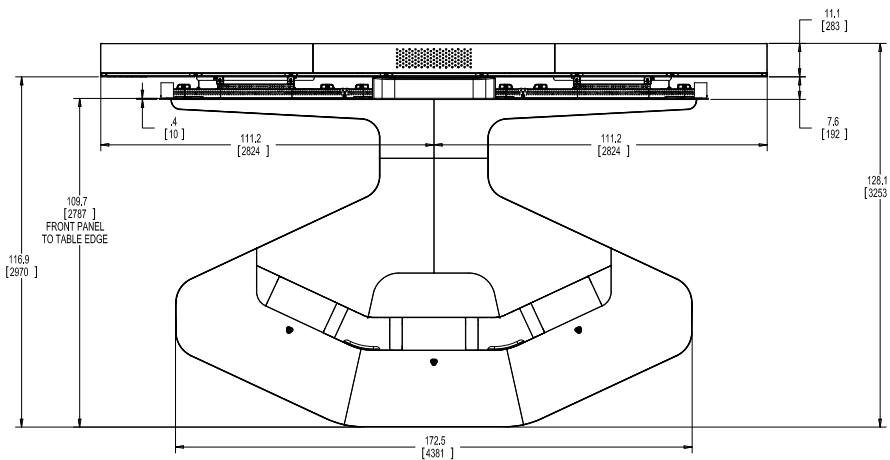
Polycom[®] OTX[™] 300 HD VIDEO WALL AND TABLE ASSEMBLY



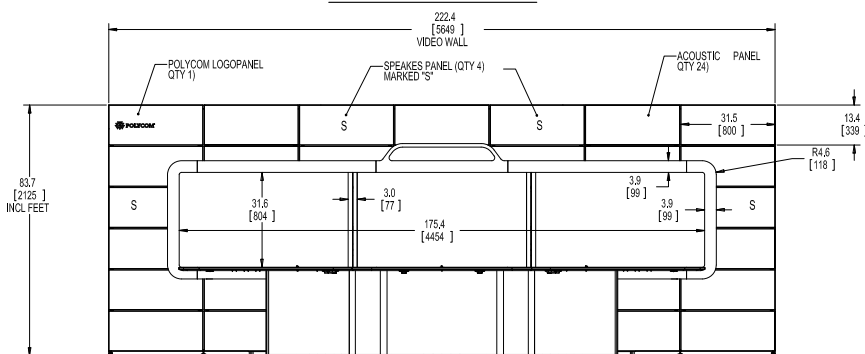
ISO VIEW



SIDE VIEW



TOP VIEW



FRONT VIEW



POLYCOM[®]

www.polycom.com

3726-09883-001

HDWR Rev B 18-July-11

Polycom Headquarters: 4750 Willow Road, Pleasanton, CA 94588. (T) 1-800-POLYCOM (765-9266)

© 2010 Polycom, Inc. All rights reserved. Polycom and the Polycom logo are registered trademarks.