

FCC Verification User Manual

- This device complies with Part 15 of the FCC Rules. Operation is subject to the following two conditions: (1) this device may not cause harmful interference, and (2) this device must accept any interference received, including interference that may cause undesired operation.
- "Warning: Changes or modifications to this unit not expressly approved by the party responsible for compliance could void the user's authority to operate the equipment."
- "NOTE: This equipment has been tested and found to comply with the limits for a Class B digital device, pursuant to Part 15 of the FCC Rules. These limits are designed to provide reasonable protection against harmful interference in a residential installation. This equipment generates, uses and can radiate radio frequency energy and, if not installed and used in accordance with the instructions, may cause harmful interference to radio communications.

However, there is no guarantee that interference will not occur in a particular installation. If this equipment does cause harmful interference to radio or television reception, which can be determined by turning the equipment off and on, the user is encouraged to try to correct the interference by one or more of the following measures:

- Reorient or relocate the receiving antenna.
- Increase the separation between the equipment and receiver.
- Connect the equipment into an outlet on a circuit different from that to which the receiver is connected.
- Consult the dealer or an experienced radio/TV technician for help.

Canadian Emissions Requirements

- The Canadian Government has announced an amendment of the radio act which will require computing equipment to comply with EMI specifications in Canada. The effective date for products imported into Canada is January 31, 1989.
- The intent of the amendment is to establish Canadian Regulations which are harmonized with the existing FCC Regulations. As such, no retesting is required and devices which have been tested and comply with the FCC Specifications (Class B) also comply with the Canadian Specification (Class B).
- There is however, an additional equipment label requirement. Units imported into Canada must be accompanied by a label affixed to the device in both English and French.
 "This Class B digital apparatus complies with Canadian ICES-003."
 "Cet appareil numérique de la classe B est conforme à la norme NMB-003 du Canada."

"This Class B digital apparatus complies with Canadian ICES-003."
 "Cet appareil numérique de la classe B est conforme à la norme NMB-003 du Canada."

Model no.: TG90P4826D09

CUSTOMER SERVICE FOR CHRISTMAS TREES

For any questions, assistance, or missing parts, **DO NOT RETURN YOUR TREE TO PLACE OF PURCHASE.** please contact us first, call: 1-888-919-0070 (English, Spanish and French), 10:00am-7:00pm, Monday-Friday, Eastern Time, or visit our website at www.polygoup.com.

Tree ID#: _____ Customer Name: _____
 Tree UPC#: _____ Address:(No P.O. Boxes) _____
 Store Purchased: _____ City & State: _____
 Specify Problem: _____ Zip Code: _____
 _____ Day Phone: _____
 _____ Date Purchased: _____

TREE ID# IS LOCATED ON END PANEL OF BOX. TREE ID# IS REQUIRED WHEN REQUESTING REPLACEMENT PARTS.

2.7 m / 9 ft EZ Connect™ Pre-lit Aspen Tree ITM. / ART. 1455658

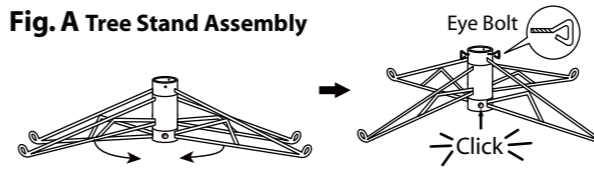
For assistance with assembly, parts and customer service, call: **1-888-919-0070** (English, Spanish, French), 10:00am-7:00pm, Monday-Friday, Eastern Time.

TREE ASSEMBLY INSTRUCTIONS

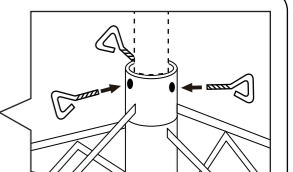
Congratulations on purchasing your new tree from Polygroup®! This tree assembles with EZ Connect™ and Simple Shape™ technology, allowing you to set up and light up your tree in less than 10 minutes! Carefully follow the instructions below on how to quickly and easily set up your new tree.

1. Before you start to assemble your tree, choose an appropriate location near a wall outlet.
2. Assemble the tree stand on a level surface. (See Fig. A)

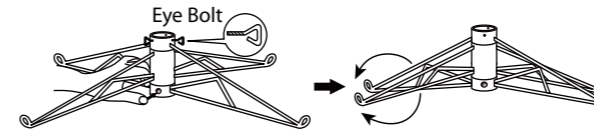
Fig. A Tree Stand Assembly



1. Pull apart the legs of the stand so that they are snapped into an x-shape, place the tree stand on a level surface.
2. Then inserting the bottom section of the tree into the assembled stand, insert and turn the eyebolts into the stand and tighten until the tree pole is firmly secured.

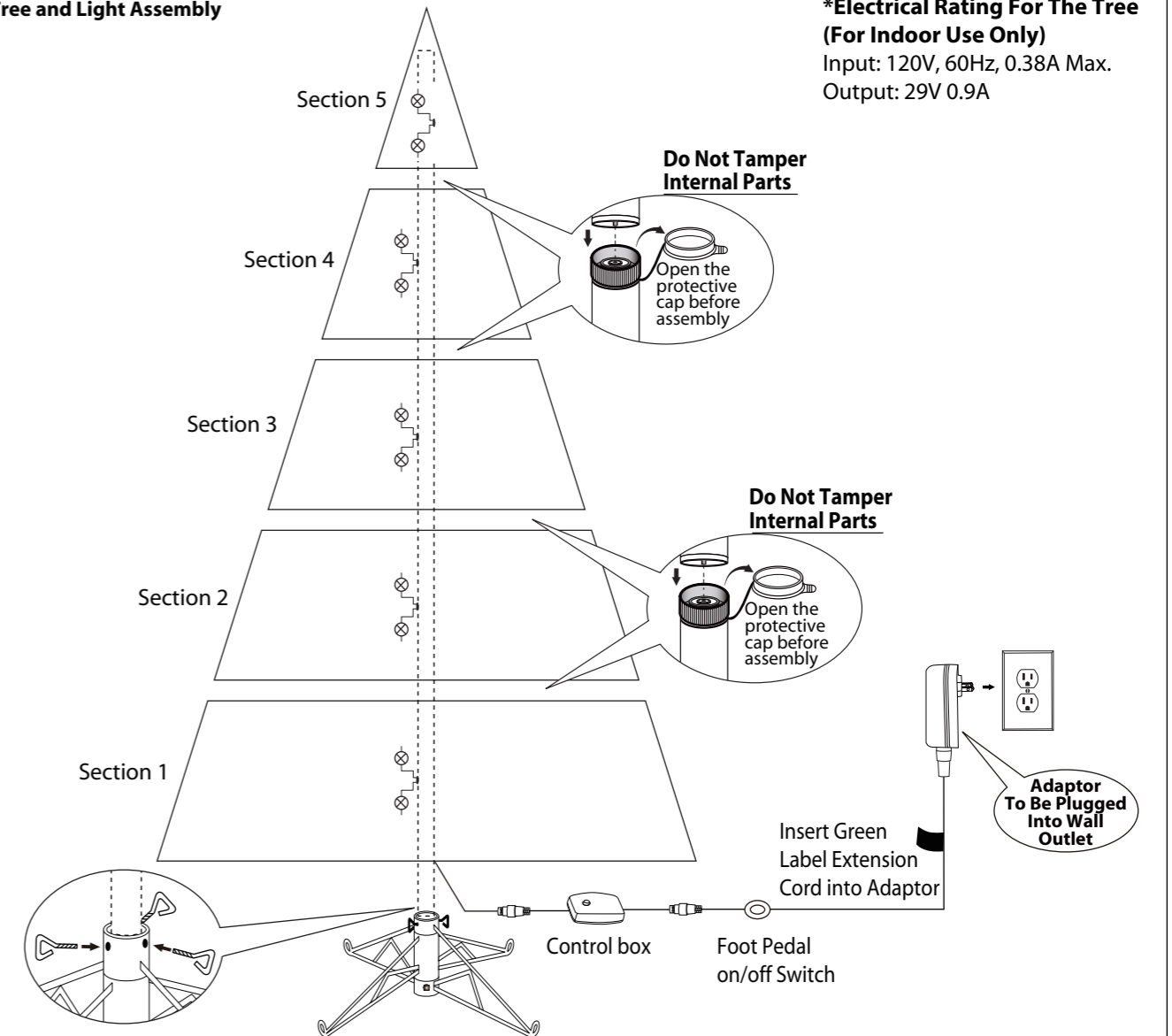


Tree Stand Disassembly

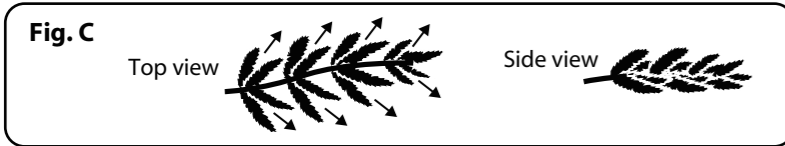


3. To close the stand, remove the eyebolts, press the metal button and fold the legs together.

Fig. B - Tree and Light Assembly



- Each tree section is numbered with a tag. Please identify all sections before assembling.
- Assemble the tree from the bottom to the top (**See Fig. B**). Start with the bottom section and remove protective cap before inserting into the assembled stand. Make sure the pole is firmly inserted and secured into the stand.
- Open the protective cap from the lower section(s) and continue inserting the upper section(s) until the tree top is inserted.
- Allow branches to fall into place or gently pull up and out. When adjusting branches, be sure that all wires are free of branch hinges.
- Plug the extension cord into a wall outlet (**See Fig. B**), your entire tree should now be lit. If some bulbs do not light or are flickering, search for any loose plugs and/or broken, loose or missing bulbs. Replace the bad bulbs promptly in order to maintain the performance and life expectancy of your pre-lit tree.
- This is a Simple Shape™ tree, just slightly upsweep all branch tips for a uniform look, no shaping required. If needed, shape the branches and tips to make the tree look fuller. Your Christmas tree is now complete and ready to be decorated. (**See Fig. C**)



STORAGE INSTRUCTIONS

- Unplug extension cord from the wall outlet first and then remove all ornaments and decorations.
- Disassemble the tree from the top to the bottom. Start with the tree top and gently lift straight up to remove from section below and fold all branches toward the pole.
- Continue by gently lifting straight up each section(s) from the section below and fold all branches toward the pole until the bottom section is removed from the tree stand. Cover the protective cap on the poles to avoid damaging the internal parts. (**See Fig. D**)
- Carefully place all tree sections into shipping box and tape it shut.
- When not in use, please store your tree in a cool, dry place away from sunlight. Exposing your tree to excessive heat or humidity may damage your tree.



TROUBLE SHOOTING TIPS

For Pre-lit Trees, If The Tree Does Not Illuminate

- Please check to make sure that all connectors are properly connected and the power adapter / extension cord is plugged into the wall outlet.
- Turn the poles gently to ensure pole-to-pole connection.
- Check for loose, broken or missing bulbs and replace as needed.
- Check for blown fuse of the extension cord, replace if needed, refer to USER SERVICING INSTRUCTIONS.
- Check on / off foot pedal.

Loose Hinge Pin

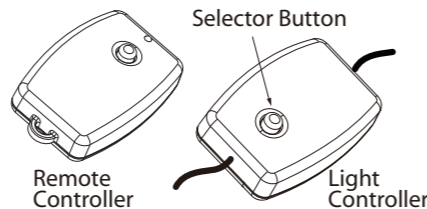
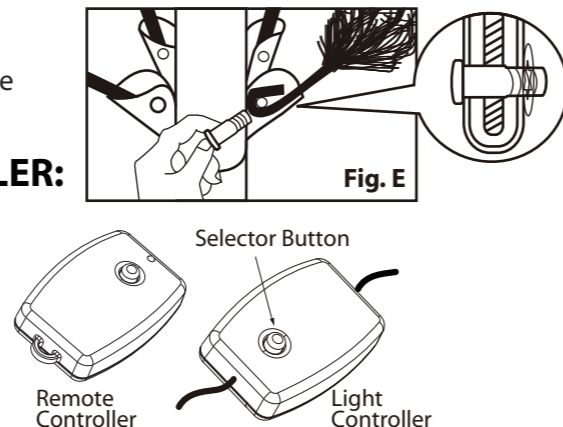
- Extra hinge pins are included for repairing the hinges. Place the branch into the slot of the bracket.
- Insert a new hinge pin through the hole and secure using the retainer washer. (**See Fig. E**)

SPARE PARTS

Each tree includes hinge pins/washers and spare bulbs. If extra parts are needed, please contact our customer service center.

HOW TO USE THE DUAL COLOR LIGHT CONTROLLER:

Press the selector button on the "Dual Color Light Controller" to select among: **1. CLEAR STEADY 2. CLEAR TWINKLING 3. CLEAR FADING 4. MULTI STEADY 5. MULTI TWINKLING 6. MULTI FADING 7. COMBINATION**



WARNING

- Use only power adapter supplied with this product, using a different adapter can damage the lights and cause fire or electrical shock hazards.
- FOR INDOOR USE ONLY.

IMPORTANT SAFETY INSTRUCTIONS

When using electrical products, basic precautions should always be followed including the following:

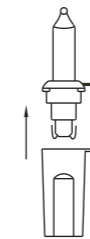
- READ AND FOLLOW ALL SAFETY INSTRUCTIONS.**
- Do not use seasonal products outdoors unless marked suitable for indoor and outdoor use. When products are used in outdoor applications, connect the product to a Ground Fault Circuit Interrupting (GFCI) outlet. If one is not provided, contact a qualified electrician for proper installation.
- This seasonal use product is not intended for permanent installation or use.
- Do not mount or place near gas or electric heaters, fireplaces, candles or other similar sources of heat.
- Do not secure the wiring of the product with staples or nails, or place on sharp hooks or nails.
- Do not let lamps rest on the supply cord or on any wire.
- Unplug the product when leaving the house, when retiring for the night, or if left unattended.
- This is not a toy. For decorative use only! To avoid risk of fire, burns, personal injury and electric shock it should not be played with or placed where small children can reach it.
- Do not use this product for other than its intended use.
- Do not hang ornaments or other objects from cord, wire, or light string.
- Do not close doors or windows on the product or extension cords as this may damage wire insulation.
- Do not cover the product with cloth, paper or any material not part of the product when in use.
- This product is equipped with push-in type lamps. Do not twist lamps.
- Read and follow all instructions that are on the product or provided with the product.

SAVE THESE INSTRUCTIONS USER SERVICING INSTRUCTIONS

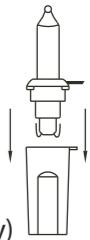
LAMP REPLACEMENT

Step 1 Grasp the power adapter or power cord plug, and than unplug from the power outlet. Do not pull the power cord.

Step 2 Lift up lamp lock tab, then pull the lamp and plastic lamp base straight out of the lamp-holder.



Step 3 Replace with a new spare lamp provided with this product.



(Reference figure only)

CAUTION:

- Risk of fire. Use only the power adapter provided with this product. Do not replace lamps with other than the spare lamps provided with this product.
- To reduce the risk of fire and electric shock: a) Do not install on trees having needles, leaves or branch covering of metal or materials which look like metal, and b) Do not mount or support strings in a manner that can cut or damage wire insulation.
- To reduce the risk of fire and electric shock, use only the power supply that was provided with this product.