

PRODUCT OVERVIEW

The portable Wi-Fi SD/USB (code name: Combi) device allows you to convert any SD memory cards and USB external storage devices into a Wi-Fi accessible media.

Simply insert your SD memory card into the SD slot or connect your USB external storage into the built-in USB port. Switch the unit on and you can now wirelessly access your videos, music, photos, data and stream it to your iPad®, iPhone®, tablets, smartphones, and notebooks. There is no need to worry about running out of space on your mobile devices

For maximum portability, the Wi-Fi SD/USB device has a built-in rechargeable battery. Simply plug it into any available USB port on your computer to charge. As simple as 1-2-3, you are ready to enjoy your device and no waiting needed. With the SD or External USB connected, the portable Wi-Fi SD/USB can be accessed while the battery is charging.

Product Features

- Supports SDXC, SDHC and SD memory cards. SD adapter is needed for MicroSD and MiniSD.
- Supports USB 1.1, 2.0 and 3.0 External Storage devices
- Stream media over WiFi enabled devices up to 5 users simultaneously
- Access and stream your music, videos, photos and data from the SD memory cards or from USB external storage using the free custom mobile app supporting iOS and Android operating systems
- Built-in micro USB port for charging and data sync function
- Up to 7 Hours of continuous battery life*
- Search function to locate and access your file much faster
- Internet access capability via wireless, supporting 802.11 b/g/n speeds
- Supports LAN data-shares and cross-platforms including Windows, Mac, Linux, iOS and Android.
- Support multiple NSA, including samba/webdav

- Support multiple platform client tools, including Windows/Mac/Linux/iPad/iPhone/Android

*Battery life subject to normal usage conditions and configurations.

A. To function as SD memory card reader. Simply connect the device into the computer's available USB port. The device will automatically mount on your desktop or inside the "My Computer".



The Wi-Fi SD/USB works as SD memory card reader and charges the internal battery.

B. To function as a Bridge. Press power switch button on, it works solely as a Wi-Fi SD/USB external HDD/Flash.



C. Wireless mode, Wirelessly connect the device to your existing wireless router to have internet access as illustrated below.



1. Hardware and Accessories

The Power 7 Wi-Fi SD/USB Storage kit includes the following:



2 Product Parameters

2.1 Product Dimensions

Dimension: 118mm (L) X 79mm (W) X 14mm (H)

2.2. Product Specification

CPU:

Model: Ralink RT5350
Frequency: MIPS24KEc 360MHZ

Wi-Fi:

Standard: 802.11 b/g/n,
Frequency: 2.4 GHZ
Speed: 72Mbps at 20MHz
150Mbps at 40MHz

USB Interface: Micro USB 2.0 for data transfer and charging

Battery:

Capacity: 3000mAh

Charging current: supports 500mA, 800mA and 1.5A

Power consumption:

A) SD Card Read/Write*: 2W

B) Stand-by (HDD Sleep Mode): 1.5W

Emission (EMI) Safety and Other Certifications: FCC (Class B) and CE

*Varies on SD card type.

2.3. Operating Temperature

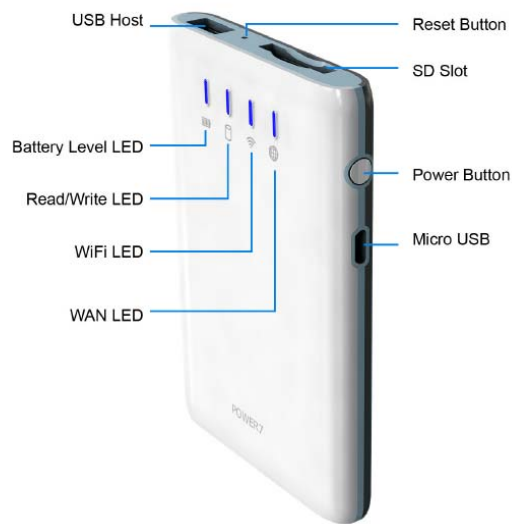
The normal operating temperature of the device is between 5°C to 35°C. Non-operating temperature is between 0° to 60°C.

The operating humidity (non-condensing) is between 5% to 90% and non-operating humidity is 5% ~ 90% (non-condensing).

3. Minimum Hardware Requirements

- Internet Connection
- PC Operating System Requirements
 - Windows: XP/Vista/Windows 7
 - Mac: OS X 10.5.0 and later
 - Others: Fedora 12 (Linux) and late
- PC Web Browser
 - Windows: Supports Internet Explorer 7.0 and higher version
 - Mac: Supports Safari 3.0 and higher version
 - Others: Firefox 3.5 and higher version
- Router or Switch

4. Product View



5. Interface

5.1 USB Interface: Micro USB 2.0 Interface can connect to the computer to transmit data and charge the device.

5.2 USB host interface: connect USB memory for WIFI accessing, or connect smartphone for charging.

5.3 SD slot: insert SD card for WIFI accessing.

5.4 Power BUTTON: Turns the device on/off.

5.5 Reset Button: set the device to Default Factory configuration.

5.6 LED Panel

Battery Level LED:

1. Green Steady Light: The battery power is >30%.
2. Red Steady Light: The battery power is <30% and >10%.
3. Red Fast Flash: The battery power is depleting and will soon shut down.
4. Green Slow Flash (every 2 seconds): The battery is charging.
5. Green Slow Flash (every 1.5 seconds): The device is shutting down.
6. LED off: The device is powered off.

WiFi LED

1. Blue LED shows the system initiation state. It starts flashing in the process of initiation, and it stops flashing when the system initiation completes.
2. Blue Steady Light: WiFi is ready.
3. The LED light is off for the following situations:
 - A. Device is on, but the WiFi signal is unsteady.
 - B. Device is off.
 - C. Device is in Mobile HDD Mode and the WiFi is off.

Internet LED

- A. Green Steady Light: WiFi signal is good. .
- B. No Light: Not connected to the Internet.

R/W LED

1. On WiFi disk mode
 - A. Blue Steady Light: Memory connection is successful.
 - B. Blue Flashing Light: Memory is reading or writing.
2. Card reader mode
 - A. Blue Steady Light: Connected to USB2.0
 - B. Blue Flashing Light: Connected to USB2.0 and is reading or writing.

6. Storage Installation

6.1 SD Memory Card

Note: Do not touch the exposed connectors on your SD memory card. Prior to installing the SD memory card, make use the Wi-Fi SD/USB device is switched off and no USB external storage is connected.

Installing the SD memory card is very simple. Locate the SD memory card slot. Simply insert the memory card as seen on the image below. Gently push the memory card all the way in until it locks into its place.



Press the power button to switch on the device. Wait for few seconds to complete the initialization process and your SD memory card is ready to use.

6.2 USB External Storage

Note: Prior to installing your external USB Storage, make use the Wi-Fi SD/USB device is switched off and no SD memory card installed.

Locate the USB port on the device. Simply insert the USB connector into the USB port of the device as seen the image below.

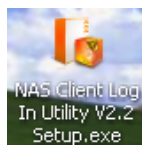


Press the power button to switch on the device. Wait for few seconds to complete the initialization process and your USB external storage is ready to use.

7. PC Client Software Installation

Our included Client Utility software is the only software that you will need to install on your computer. This software utility allows you to easily search and look for your Wi-Fi SD/USB that is connected from your home network.

1. To install the software, simply double-click on the “NAS Client Login Utility v2.2 Setup” executable file and follow the on-screen instructions.



2. Once the installation is complete, double-click on the “NAS Client Login Utility V2.2” icon on your desktop to launch the software utility.



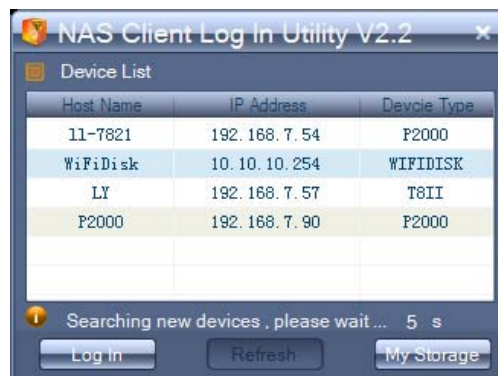
8. Using Personal Computer

8.1. Connecting Wirelessly to PC

Switch-on the Wi-Fi SD/USB by pressing the power button at the front panel. Wait for few minutes until the Wireless LED has remained lit. Enable the Wi-Fi feature on your PC and open the Wireless Network Connection. Select the WiFiDisk wireless connection (default wireless SSID: WiFiDisk and with no password). Once you have successfully connected to your Wi-Fi SD/USB, you may now run the “NAS Client Log In Utility V2.2” to search for your device and complete the configuration process.

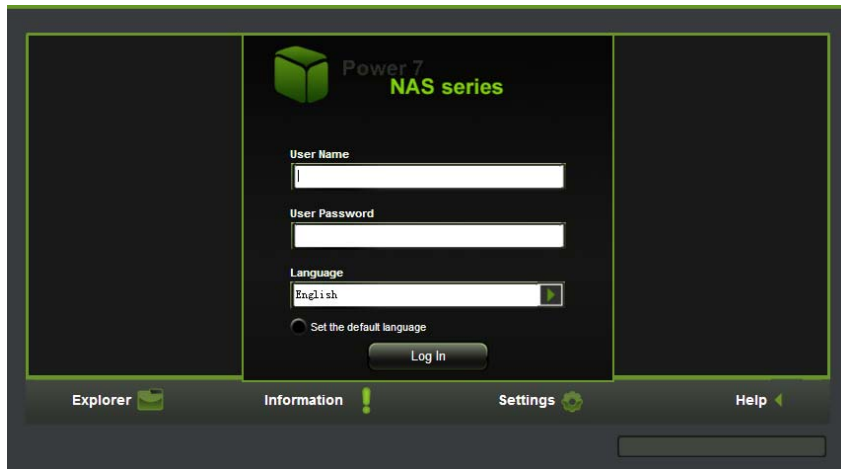
8.2. PC Client Login Utility

Double-click the “Client Log In Utility V 2.2” icon on your desktop. The software utility will search all the connected devices in your network as seen on the screenshot below.



If you do not find the WiFiDisk on the list of devices connected in your network, click on the “Refresh” button to refresh the device list.

Select the WiFiDisk on the list, then click on the “Log In” button to enter the web interface as seen on the image below.



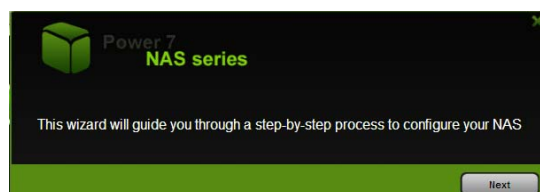
Type the default User Name as admin and leave the User Password as blank. Click on the “Log In” button to access the Web Management Interface.

If you choose to click on the “My Storage” button, enter the admin login name and password to gain access to the Wi-Fi SD/USB. Once successfully logged-in, it automatically mount the storage area of the Wi-Fi SD/USB onto your desktop

8.3. Wi-Fi SD/USB Configuration using PC

Once your Wi-Fi enabled-PC is successfully connect to the Wi-Fi SD/USB, using the “NAS Client Login Utility V2.2” will allow you to access our built-in Web Management Interface and configure your device.

1. During the initial setup, our Wizard will automatically run and will guide you through the step-by-step process on configuring the Wi-Fi SD/USB as seen on the screenshot below. You may cancel this process by clicking on the “X” at the top right corner of the window. If you cancel the Wizard, it will keep the factory default settings of your Wi-Fi SD/USB.



2. Click on the “Next” button. By default, the Access Point (AP)+Client is selected.



There are two available Internet Access options –

- A. Access Point (AP) + Client. Connecting the Wi-Fi SD/USB to another wireless device to have the internet access.
- B. WAN. Directly connecting the Wi-Fi SD/USB to the available port on the back the router.

Selecting the AP+Client Option

- SSID. Type-in the SSID name or click on the “Rescan” button to automatically search for the available wireless network connections.
- Password. Type-in the correct password to join the wireless network connection selected.
- IP Address. Select either DHCP or Manually assign an IP address
 - o By selecting DHCP, the host will provide an automatic IP address to connect to the internet
 - o By selecting Manual, you have to manually assign an IP address to connect to the internet

Selecting the WAN Option



By selecting the WAN option, the Dynamic IP is selected as the default setting. You can manually assign your own IP address by clicking on the green arrow and select the Static IP option.

Click on the “X” button if you wish to cancel and exit this window.

3. Click on the “Next” button. The next step is to configure the Wi-Fi Disk.



The screenshot shows a configuration window titled "WiFi Disk" with a green header and a close button (X) in the top right corner. Below the title is a "WiFi & LAN Setting" section. The settings are as follows:

SSID:	WiFiDisk-348A	Channel:	11
Mode:	11b/g/n	Security:	Mixed WPA/WPA2-PSK
Password:	11111111		
MAC Address:	00:1C:C2:02:34:B8		
IP Address:	10.10.10.254		
Mask Address:	255.255.255.0		

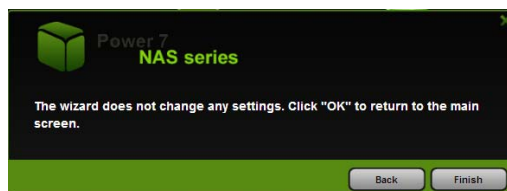
At the bottom of the window, there are three buttons: "Back", "Skip", and "Next".

- SSID: Type-in the combination of letters and numbers only. 32 characters is the maximum allowable SSID length
- Channel: The default setting is set to Auto. There are 14 available channels to choose from.
- Modes: The default setting is 11b/g/n. You can also manually set the modes to 11Mbps (802.11b), 54MBPS (802.11G), and 150Mbps (802.11n).
- Security: The default is set to NONE. The WPA-PSK, WPA2-PSK , Mixed WPA/WPA2-PSK are available.
- Password: WPA-PSK , WPA2-PSK , Mixed WPA-PSK/WPA2-PSK: Minimum 8 (Maximum 63) characters.
- IP Address: The default IP address is set to 10.10.10.254 with subnet mask of 255.255.255.0. The IP address can be changed.

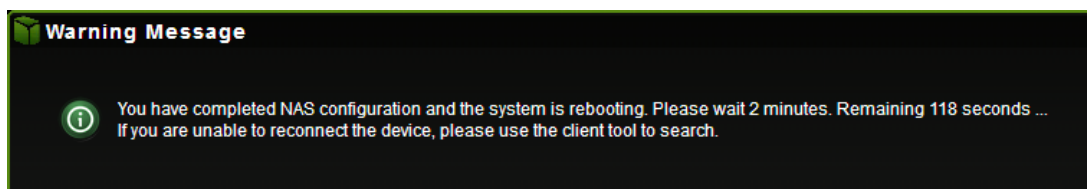
4. Click on the “Next” button. The next step is to change the admin default password. Click on the “Next” button once the password has been modified. You may click on the “Skip” button to keep the default password.



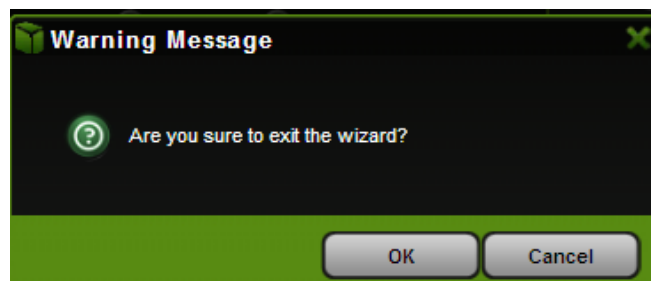
5. Click on the “Finish” button to complete and save the changes made.



The system will start rebooting. This process will take approximately 5 minutes as seen on the image below.



The step-by-step wizard can be canceled at anytime. Click on the “X” located at the top right of the window as seen on the image below. Click on the “OK” button to exit or “Cancel”.



9. Using Mobile Devices

9.1. iOS Client App Installation

1. Click on the “App Store” icon on the desktop as seen on the image below. Search and locate the free “MobileFun” app and follow the on-screen installation instructions.



2. Once the installation process has been completed, the “MobileFun” app can be found on the desktop as seen on the image below.



9.2. Wirelessly connecting your iPhone/iPad

1. Turn-on the Wi-Fi SD/USB. Wait for few minutes to complete the initialization process. The blue Wi-Fi LED on the device should remain solid indicating that the initialization process has been completed.

2. Click on the “Settings” icon on the desktop as seen on the screenshot below.



3. Click on the “Wi-Fi”. Inside the Wi-Fi Networks, the “WifiDisk-XXXX” should appear on the list. Click on the “WifiDisk-34BA” as seen on the image below. The “34BA” part of the SSID is the last 4 digits of the device MAC Address.



Once the “Wifidisk-XXXX” is selected, a check mark will appear before the SSID and the Wi-Fi logo will appear after the device name on the top left of the display.

9.3. iOS User Login

1. Click on the “MobileFun” icon to launch the app as seen on the image below.



2. Enter the Admin password that you assigned during the configuration process. The password is only required during the first login. The device remembers the password and there is no need to enter it again the second time you login.

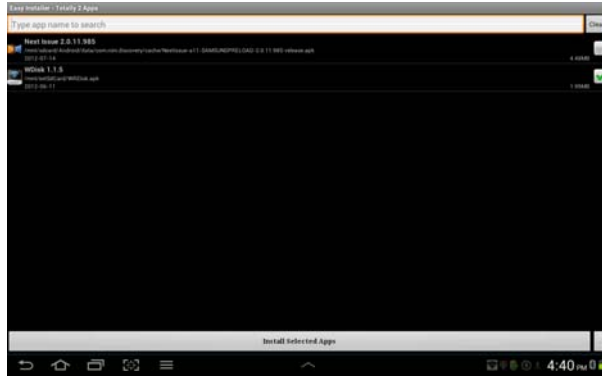


3. Once the password has been entered correctly, you will be automatically connected into the "My WiDisk". The "My WiDisk" is the Wi-Fi SD/USB Storage.



9.4. Android Client App Installation

1. Download the Client App called “MobileFun” from the official website as seen on the screenshot below.



2. Click on the “Install” button and follow the on-screen instructions.



3. Once the Client App is successfully installed, the “MobileFun” icon can be found on your desktop as seen on the image below.



9.5. Wirelessly connecting your Android devices

1. Turn-on the Wi-Fi SD/USB. Wait for few minutes to complete the initialization process. The blue Wi-Fi LED on the device should remain solid indicating that the initialization process has

been completed.

2. Click on the “Settings” icon on your desktop as seen on the screenshot below.



3. Switch the Wi-Fi to ON position. Inside the Wi-Fi networks, the “WifiDisk-XXXX” should appear on the list. Click on the “WifiDisk-34BA” as seen on the image below. The “34BA” part of the SSID is the last 4 digits of the device MAC Address.



4. The word “Connected” will appear under the SSID name of which is an indication that the Android Device is connected to the Wi-Fi SD/USB.

9.6. Android User Login

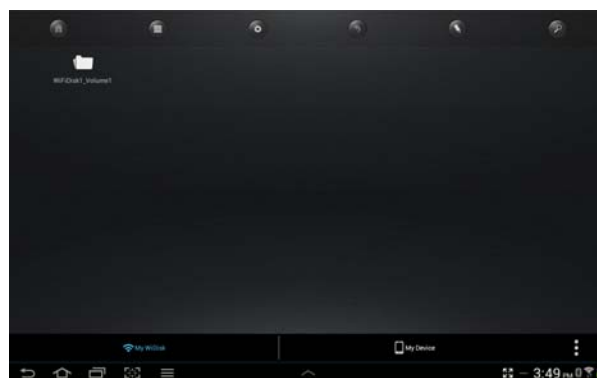
1. Click on the “MobileFun” icon to launch the app as seen on the image below.



2. Enter the Admin password that you assigned during the configuration process. The password is only required during the first login. The device remembers the password and there is no need to enter it again the second time you login.



3. Once the password has been entered correctly, you will be automatically connected into the “My WiDisk”. The “My WiDisk” is the Wi-Fi SD/USB Storage.



10. Basic Functionality

10.1. iOS Device Client

Once you have successfully connected to the Wi-Fi SD/USB, by default, you will be inside the “My WiDisk”. The “My WiDisk” is the Wi-Fi SD/USB and the “My Device” is the device that you are using to access the Wi-Fi SD/USB. Few buttons that can be found inside the Main Screen as listed below.

My Device Main Screen View – By default, the Documents folder, Music folder, Photos Folder, Videos folders and iPad (or iPhone) folder are available to easily organize your files inside the My Device.



My WiDisk Main Screen View –



Home Button – back to the main screen.



View Button - change to List or Thumbnail view.



Setting Button – change the Wi-Fi SD/USB configuration.



Back Button – back to previous screen



Share Button – to share, copy, delete, and upload files functions



Search Box – to search for specific file name and/or extension.



My WiDisk – the Wi-Fi SD/USB or the Remote Storage.



My Device – the device that you are using to access the Wi-Fi SD/USB or the Local Storage

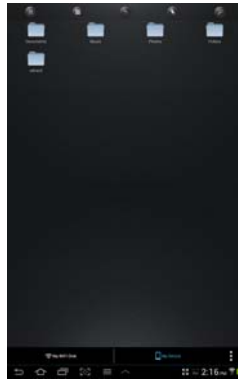


Status Button – to view the download/upload status list.

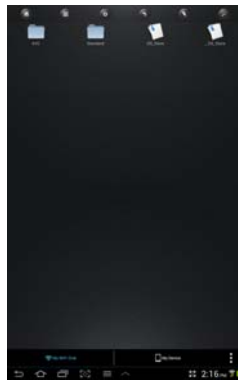
10.2. Android Device Client

Once you have successfully connected to the Wi-Fi SD/USB, by default, you will be inside the “My WiFi Disk”. The “My WiFi Disk” is the Wi-Fi SD/USB and the “My Device” is the device that you are using to access the Wi-Fi SD/USB. Few buttons that can be found inside the Main Screen as listed below.

My Device Main Screen View – By default, the Documents folder, Music folder, Photos Folder, Videos folders and SDCard folder are available to easily organize your files inside the My Device.



My WiFi Disk Main Screen View –



Home Button – back to the main screen.



View Button - change to List or Thumbnail view.



Setting Button – change the Wi-Fi SD/USB configuration. This feature only appears when switched to the “My WiFi Device”.



Back Button – back to previous screen



Share Button – to share, copy, delete, and upload files functions



Search Box – to search for specific file name and/or extension.



My WiFi Disk – the Wi-Fi SD/USB or the Remote Storage



My Device – the device that you are using to access the Wi-Fi SD/USB or the Local Storage



Status Button – to view the upload/download status, current song/video playing and to exit the app.

10.3. Playing Music/Audio (iOS and Android)


Tip: It is highly recommended to create a folder or folders where to copy all your movie files into the Wi-Fi SD/USB for ease of use and file organization.


The Music or Audio files can be played regardless if you are inside the “My WiDisk” (or “My Wifi Disk for Android) or “My Device.



Simply locate the music or audio file that you would like to play. Click on the file and your music will automatically play.




Note: Please consult your device manual to check whether it will support the music/audio files that you would like to play.


 - When clicked, the current music that is playing will restart at 0.00. Clicked twice, it will play the previous music.



 - When clicked, it will play the next music


 - When clicked, it will start playing the music or audio file. Click again, the  will pause/stop playing the music.


 - When clicked, it will exit the music player interface.



Five play-modes:

a.  - Play current song: the current music that is playing will be stopped, and playing progress will back to 0.00.

b.  - Repeat current song: the player will always play the current song, and it will only stop playing when the  button is clicked.

c.  - Shuffle all songs: the music or the audio files will be played randomly.

d.  - Play current list: the music or the audio files will be played sequentially.

e.e.  - Repeat All songs: the music or the audio files will be played in sequence, and it will only stop playing when the  button is clicked.

Tip: You can click and hold, then slide the music progress button to fast-forward or rewind the music.

Tip: You can exit the Music Player Interface at any time and will continue to play the music or audio file in the background.

10.4. Playing movie/video (iOS only)

Tip: It is highly recommended to create a folder or folders where to copy all your movie files into the Wi-Fi SD/USB for ease of use and file organization.

The movie or video files can be played regardless if you are inside the “My WiDisk” (or “My Wifi Disk for Android) or “My Device.

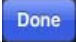
Simply locate the movie or video file that you would like to play. Click on the file and your movie will automatically play as seen on the screenshot below.




Note: Please consult your device manual to check whether it will support the movie or video files that you would like to play.



By default, the video playback is in the landscape mode. See the button functionalities below.


1.  - When clicked, the movie that is currently playing will stop and will exit the Movie Player Interface.

2.  - When clicked, this will scale your movie according to the screen size.


3.  - Click, hold and slide the progress button to fast-forward or rewind the movie.

4.  - Click, hold and slide the volume control to increase or lower the volume.

5.  Press and hold to fast-rewind the movie while playing.

6.  Press and hold to fast-forward the movie while playing.

7.  When clicked, it will start playing or resume playing the movie.

8.  When clicked, it will pause the movie from playing.

10.5 Playing movie/video (Android only)

Tip: It is highly recommended to create a folder or folders where to copy all your movie files into the Wi-Fi SD/USB for ease of use and file organization.

The movie or video files can be played regardless if you are inside the “My WiDisk” (or “My Wifi Disk for Android) or “My Device.

Simply locate the movie or video file that you would like to play. Click on the file and the list of movie player will appear as seen on the screenshot below.



Note: The control panel will vary depending on the movie player installed on your Android devices. Please consult the movie player’s user guide on how to control the movie.

10.6. Viewing/playing photos (iOS only)


Tip: It is highly recommended to create a folder or folders where to copy all your pictures into the Wi-Fi SD/USB for ease of use and file organization.




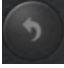
Note: The Wi-Fi SD/USB currently supports .jpg, tiff, gif and .bmp images.


The supported images can be viewed as thumbnails or as a list as seen on the screenshot below. Any images that are not supported can be viewed as a generic thumbnail or icon.

Click on any pictures or images and it will automatically play as a slide show as seen on the screen shot below.




There are few functions are available to control the slideshow. You can swipe your finger across the screen to manually view the pictures or images or click the  button, to automatically play the slideshow.

- Click the  button to pause the slideshow from playing and press again to continue playing.
- Click the  button to restart or to replay the slideshow.
- Click the  button to play the slideshow once and it will stop at the last image or photo.
- Click the  button to return from the previous screen.

Background music can be added while playing the slideshow. Click the  button as seen on the screenshot below.



- Stop/Continue playing button - to stop or continue playing the background music.
- Select button - search and locate the file or files that you would like to play as the background music. Click on the  to return to the slideshow as seen on the screenshot below.



- Repeat button – the background music will continue playing the same music when it is switched-on. By default, this option is switched-off.

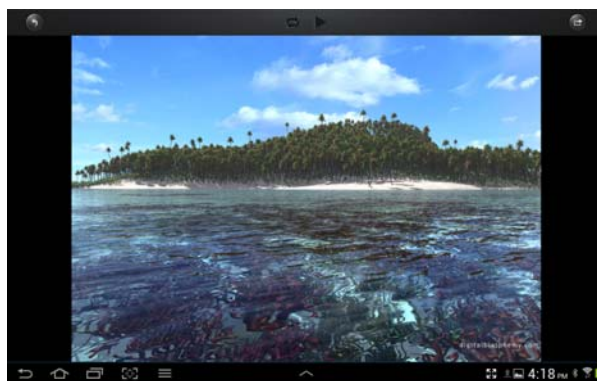
10.7. Viewing/playing photos (Android only)


Tip: It is highly recommended to create a folder or folders where to copy all your pictures into the Wi-Fi SD/USB for ease of use and file organization.




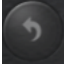
Note: The Wi-Fi SD/USB currently supports .jpg, tiff, gif and .bmp images.

The supported images can be viewed as thumbnails or as a list as seen on the screenshot below. Any images that are not supported can be viewed as a generic thumbnail or icon.

Click on any pictures or images and it will automatically play as a slideshow as seen on the screen shot below.



There are few functions that are available to control the slideshow. You can swipe your index finger across the screen to manually view the pictures or images or click the  button, to automatically play the slideshow.



- Click the  button to pause the slideshow from playing and press again to continue playing.
- Click the  button to restart or to replay the slideshow.
- Click the  button to play the slideshow once and it will stop at the last image or photo.
- Click the  button to return from the previous screen.

10.8. Sharing photos/images (iOS only)

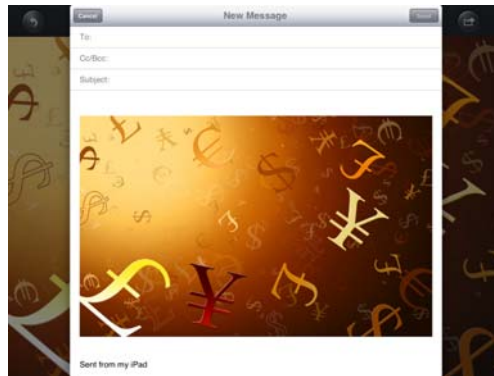
There are few options to share photos/image to your friends and family; by email, saving to the device Photo Album and upload to Facebook.

Note: Internet connection is required to share photos/images via email or accessing any social media network.



- Click on the  button located at the top right of the screen to show the three options available to share your photos/images. Click the  button to return from the previous screen.

1) E-Mail button – when clicked, the default email app will automatically launch and the selected photo/image as an attachment.



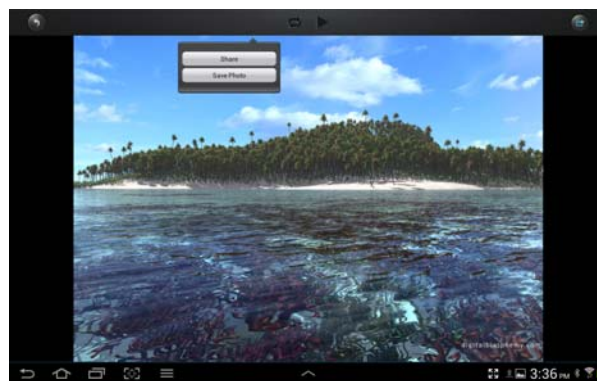
2) Add to photo – when clicked, the selected photo/image will be saved into the Photo Album of the device.

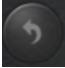

3) Upload to Facebook – when clicked, you will be directed to the Facebook login screen. The Facebook app must be installed on your device. Facebook login and password is required.

10.9. Sharing photos/images (Android only)

Sharing photos/images using your Android device will vary depending on the apps installed on your device.

Note: Internet connection is required to share photos/images via email or accessing any social media networks.



Click the  button to return from the previous screen or to exit. Click the  button located at the top right of the screen to show the three options available to share your photos/images.

1) Share button – when clicked the, a list of app installed on your Android will appear as seen on the screenshot below. You may select from the list which app to launch.

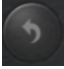



2) Save Photo button - when clicked, the selected photo/image will be saved into the device Photo Gallery.

10.10. Opening/viewing documents (iOS only)

The device client app supports keynote, numbers, page, Excel, Word, .pdf, .txt and ppt files.



To open or view any documents, simply click on the file. This will automatically open the supported file. Click the  button to return from the previous screen or click the  button to send the

file via email as seen on the screenshot below.

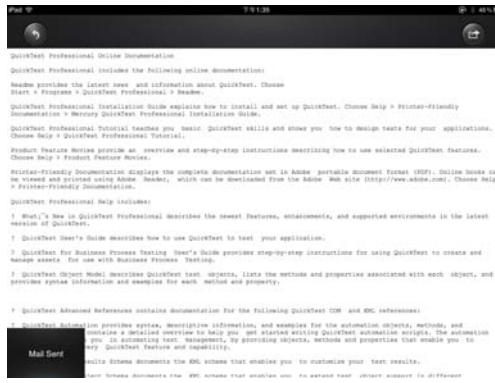


Note: Internet connection is required to send emails.

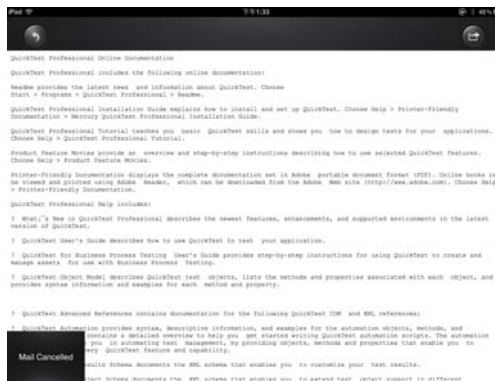
Click the “E-Mail” button, the default email app will launch automatically and the selected document will be sent as an attachment.



Once the email is sent, there will be a message “Mail Sent” located at the lower-left corner of the screen. This is an indication that the email was sent successfully.



“Mail Canceled” message will appear at the lower-left corner of the screen when the email is canceled. See the screen shot below.




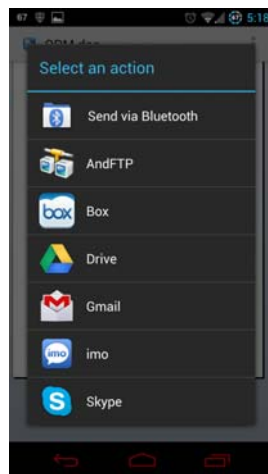
10.11. Opening/viewing documents (Android only)

To open/view a document using your Android device, simply click on the file that you wish to open/view. This will automatically open the file using the default viewer or the installed app on your Android device as seen on the screenshot below.






Note: Internet connection is required to send emails.

To send the document as an attachment, click on the  button at the top right of the screen. Click on the "File", then "Send". Once the "Send" button is clicked, a list of installed app will appear on your screen. You may select from the list of app that you wish to use to send or share the selected document. See the screenshot below.



10.12. Copy, Delete, Download, Upload functions (iOS and Android)

You may click on the  at anytime to share, copy, delete, download, and upload files. As seen on the screenshots below, the  will appear at the top as part of the menu once the  is clicked.


At the bottom of the screen, there are new icons. See below for their functions.



- Click once, all the files will be selected. The icon will turn into blue color and a check mark will appear on every file.



- Click once again, all the files will be unselected. The check marks will no longer visible.

Tip: You may select a single or multiple files by clicking on the thumbnail. As well, you may click and hold on the thumbnail for few seconds and drag it to  icon to download, or  icon to upload or to  icon to delete a file or files.



- From the My WiDisk (or My WiFi Disk), the file or files may be downloaded to the local drive or to My Device. The down arrow indicates that you are currently in the My WiDisk (My WiFi Disk).



- From the My Device, when clicked, the file or files may be uploaded to the remote storage or to My WiDisk (or My WiFi Disk). The up arrow indicates that you are currently in the My Device.





- When clicked, the list of files that are in queue for uploads/downloads will appear as well as the list of files that were copied/transferred successfully.

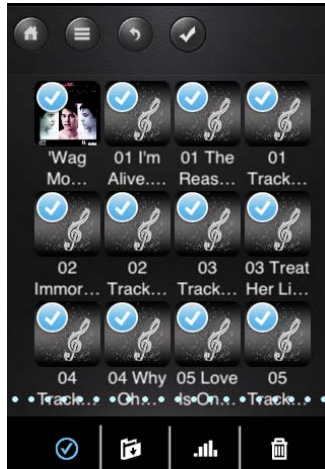



- When clicked, any selected files will be deleted.

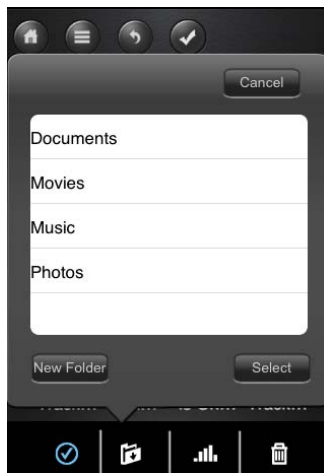
10.13. Copying/transferring file to My Device (iOS and Android)

Once you get connected into the Wi-Fi SD/USB, you can only copy/transfer a single or multiple files into the local storage (My Device).

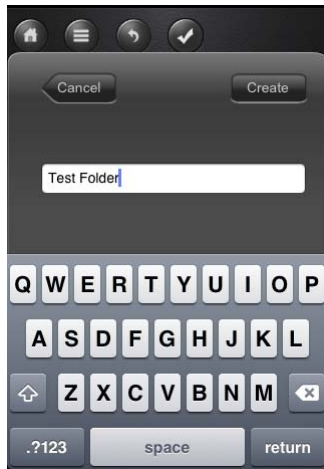
1. Click on the .
2. Use your index finger to select a single or multiple files or you may use the  to select all files to be copied/transferred.



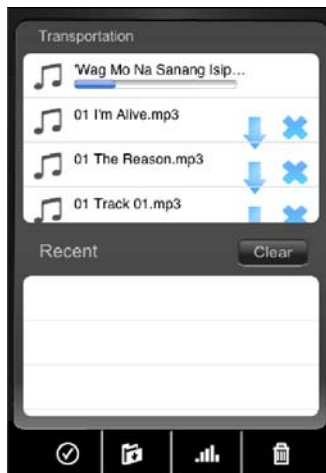
3. Click on the .
4. Select and click the folder where you want the file or files to be copied or transferred.




- A new folder may be created to copy/transfer the selected file or files. To create a new folder, simply click on the “New Folder” button. Enter the new folder name inside the box and click the “Create” button as seen on the screenshot below. The folder name can be minimum 2 characters in length and maximum of 26 characters. Click the “Cancel” button to exit.



5. Click on the “Select” button to start copying/transferring files as seen on the screenshot below.





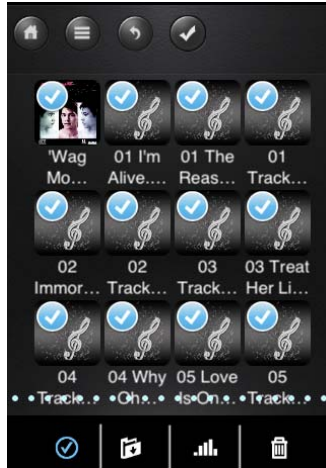
Note: Successfully copied/transferred file or files will be listed below inside the “Recent” window as seen on the screenshot above. Click on the “Clear” button to remove or clear the list.


6. Click anywhere on the screen and you will return to the previous screen. Once done, click on the  to exit.

10.14. Copying/transferring file to My WiDisk (iOS and Android)

Make sure you are in the “My Device”.

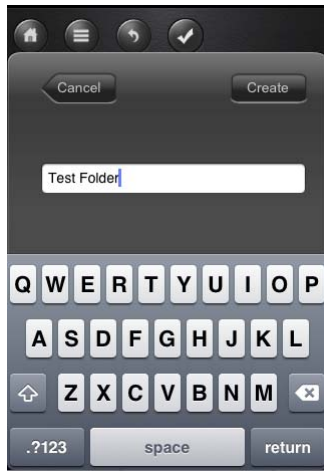
1. Click on the .
2. Use your index finger to select a single or multiple files or you may use the  to select all files to be copied/transfered.



3. Click on the .
4. Select and click the folder where you want the file or files to be copied or transferred.




- A new folder may be created to copy/transfer the selected file or files. To create a new folder, simply click on the “New Folder” button. Enter the new folder name inside the box and click the “Create” button as seen on the screenshot below. The folder name can be minimum 2 characters in length and maximum of 26 characters. Click the “Cancel” button to exit.




5. Click on the “Select” button to start copying/transferring files as seen on the screenshot below into the “My WiDisk”.





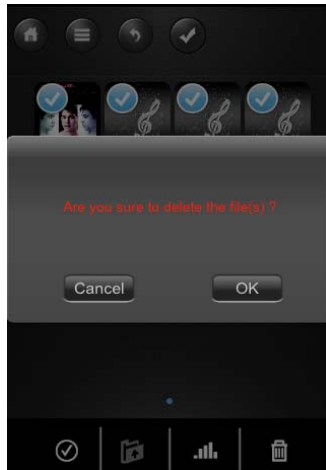
6. Click anywhere on the screen and you will return to the previous screen. Once done, click on the  to exit.

10.15. Deleting/erasing a single or multiple files (iOS and Android)



A single or multiple files can be easily deleted/erased whether you are in “My Device” or in “My WiDisk”

1. To delete file or files, click on the .

2. Use your index finger to select a single or multiple files. You may click on the  to Select All files to delete/erase.
3. Click on the  to delete or erase the selected file or files. A warning message will appear on the screen to confirm file deletion as seen on the screenshot below. Click OK to continue deleting files.



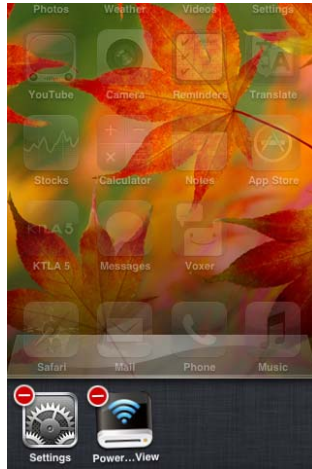
10.17. Upload/download history and status

If you have uploaded or download multiple files from/to the Wi-Fi- HDD to your local storage (My Device), simply click the  to check the files on the queue or files that were successfully copied/transferred. You may also click on the  on the main screen to check on the status.


10.18. Exiting MobileFun App (iOS)

To exit from using the MobileFun on iPhone/ iPad devices, simply press the Home key on your Apple Device.

To reset the app, click on the Home key twice and the list of app will appear at the bottom of your device. Click and hold the application icon until the minus “-“ sign appears at the top corner of the app icon. Click on the minus “-“ sign to remove the app as seen on the screenshot below.

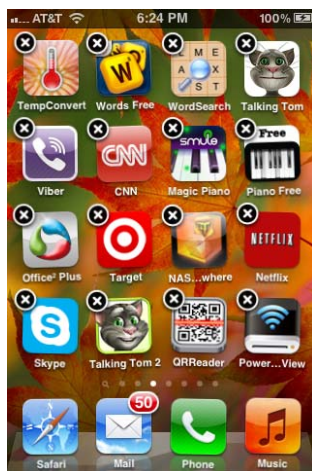


10.19. Exiting MobileFun App (Android)

To exit from using the MobileFun Android mobile devices, simply click on the  and select the “Exit” button. A warning “Are you sure you want to exit this applet?” message will appear. Click “OK” to continue existing or click “Cancel”.

10.20. Uninstall MobileFun App (iOS)

To uninstall the app from your Apple Mobile Devices, click and hold the MobileFun app for few seconds. An “X” mark will appear on all the icons on your mobile device as seen on the screenshot below. Simple click on the “X” located at the top-left corner of the MobileFun icon and this will remove the app from your Apple device.



10.21. Uninstall MobileFun App (Android)

To uninstall the MobileFun app from your Android mobile devices, see the instructions below.

Note: Uninstalling app on the Android devices will vary. Please consult your mobile device manual prior to removing any application.

1. Click on the Settings icon from your desktop.
2. Go into the application manager.
3. Locate and select the MobileFun app.



4. Click on the "Uninstall" button.



5. A warning “MobileFun. This application will be uninstalled.” Click the “OK” button to continue uninstalling the app or click on the “Cancel” button.

11. WEB Management Functions

Our built-in Web Management software is a unique web-based utility stored inside our Wi-Fi SD/USB product. No software is needed to install on your Personal Computer to use this utility. Simply launch our “Client Login Utility V2.2” or open your web browser and enter the 10.10.10.254 IP address.



Allows the user to make changes on the admin password.



Provides information of the Internal hard disk drive.



Networking Settings allow the user to make modifications and changes to Host Name, Wi-Fi and LAN, DHCP Server, Internet and DDNS.



Allows the users to enable and disable the Win File and Ext Net Services.



Allows the user to make changes on the Power Off/Reset option.



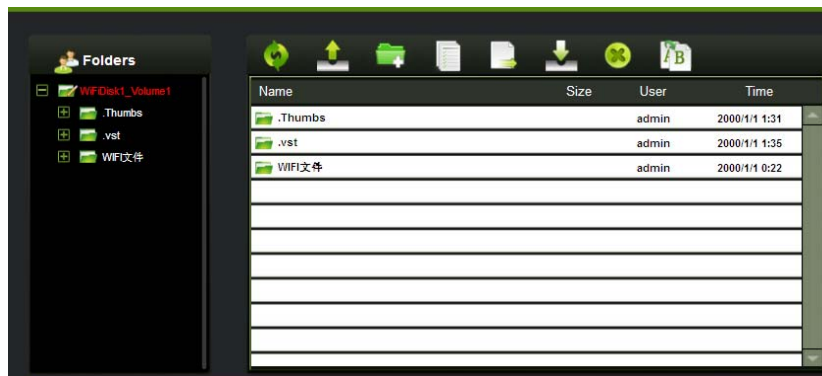
Allows the user to make modifications and changes to the Time Settings, Create System Backup, Firmware Upgrade and Resetting to the factory default setup.



This will guide the user through a step-by-step process to configure the device.

11.1. Explorer Function

Our user-friendly web based utility allows the user to upload files to the device, create folders, copy, cut, delete and rename folders and file names. We provide similar functionalities as the windows explorer of which makes our interface much easier to use.



Refresh button - to refresh the display



Upload button - to upload file or files into a specific folder.



Create Folder - to create a new folder. Maximum folder name is 26 characters in length.



Copy button - to copy file or files and paste them into another folder.



Move button - to move a file or files from one location to another



Download button - to download a file or files into a specific location. If the software installed on your computer supports a specific file type, this file will automatically open otherwise, it will ask you to download the file into a specific location. Downloading a folder or folders is currently not supported.



Delete button - to delete a file or files.



Renaming button - to make name modification or changing the file name.

11.2. Context Menu

1. On the file level, you can right-click using your mouse and a pop-menu will appear. You may Copy, Cut, Delete, Rename or Download as seen on the screenshot below.



2. On the folder level, you can right-click using your mouse and a pop-up menu will appear. You may Open, Copy, Cut, Delete or Rename the folder as seen on the screenshot below.



3. Selecting multiple files and right-click on the mouse will allow the user to either Copy, Cut or Delete the files as seen on the screenshot below.



4. Right-clicking at the bottom of the window as seen below will allow the user to either Paste, Create or Upload file or files.



◆ Open Command – Select a folder and right-click. Inside the pop-up menu, select “Open” to view the contents or open the folder.

◆ Copy Command - Select a folder or a file and then right-click. Inside the pop-up menu, select “Copy” to make a copy of the entire folder or a file and paste into another location or folder.

◆ Cut Command- Select multiple files or folders and then right-click. Inside the pop-up menu, select “Cut” and then paste the files or folders into another folder.

◆ Paste Command – After using the Cut or Copy command, right-click to launch the pop-up menu and then select “Paste” to place the file or folder into another location.

◆Delete Command – Right-click and then select “Delete” to erase a single, multiple files or folders.

◆Create Command - Right-click on the blank area inside the window and a pop-up menu will appear. Select “Create”. Enter the folder name inside the Create Folder window and click on Save.

◆Rename Command – Right-click on the folder or the file name and select “Rename”. This allows the user to make changes on the folder or file name. Click on the “Save” after the name has been changed.

◆Upload Command - Right-click the empty area inside the window. Select “Upload” inside the pop-up menu and browse for the file to be uploaded inside the current location.

◆Download Command – Select and right-click on the file to be downloaded. From the pop-up menu, select “Download”. The file will automatically open if any of the software installed on the computer supports this file type otherwise, it will ask you to download the file into a specific location. Downloading a folder or folders is currently not supported.

11.3. Keyboard Shortcuts

Our built-in Web Management Interface supports keyboard commands and shortcuts such as the following:

Tab Key, Enter Key, Home Key, PGUP, PGDN,, End Key, Up Arrow, Down Arrow, Left, Arrow Right Arrow, and Delete Key

Windows – Ctrl+C = Copy; Ctrl+V = Paste

Mac – CMD+C = Copy; CMD+V = Past

11.4. Drag and Drop

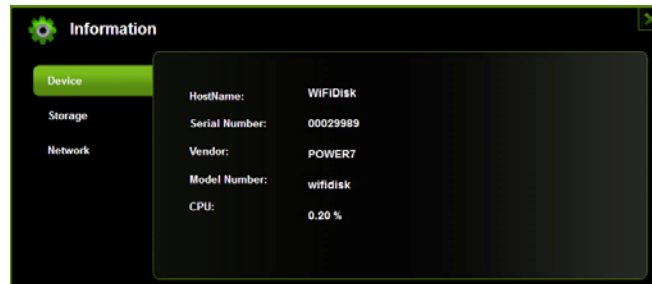
A single file drag and drop is supported by our built-in Web Management Interface, simply click and hold on the file inside the main window and drag it to any folders available inside the Folders tree.

11.5. Information

Provides detail information regarding the hardware condition, network status and storage information.

11.5.1. Device Information

Provides information such as the Host Name, Device Serial Number, Manufacturer Name, Model Number and CPU utilization as seen on the screenshot below.



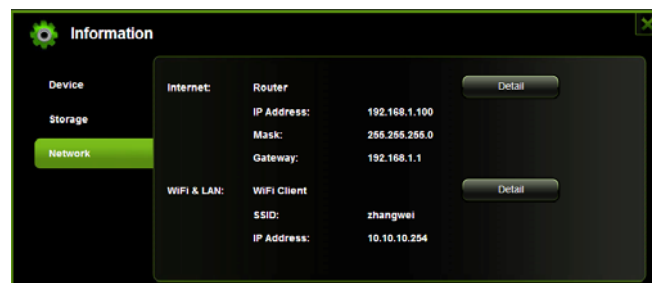
11.5.2. Storage Information

Provides information regarding the internal storage such as the total capacity, hard drive manufacturer and available storage as seen on the screenshot below.



11.5.3. Network Information

Provides detailed information regarding the current network settings such as the connection to access the internet, WiFi SSID and IP Address as seen on the screenshot below.



11.6. Settings

11.6.1. Admin User

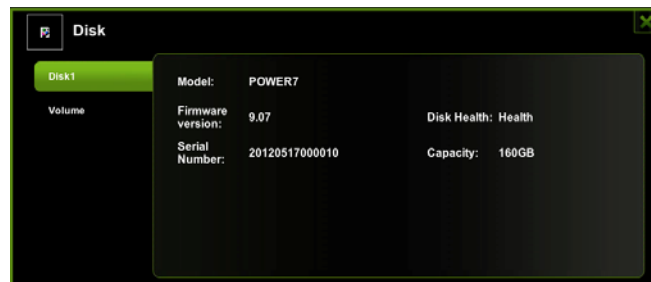
Click on the “User” thumbnail. This window will allow you to modify the admin password as seen on the screenshot below. The password should be at minimum of 5 characters to maximum 32 characters in length. Click on the “Save” button the password has been changed.



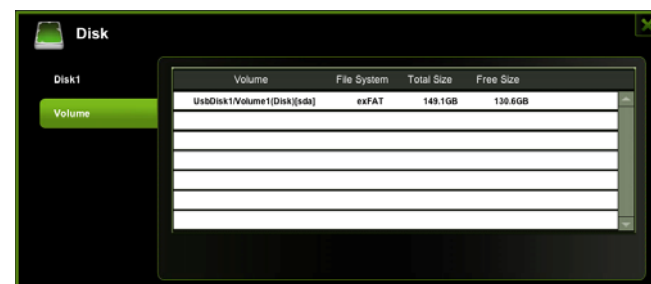
The default User Name is admin and no password is assigned. Click on the “X” to cancel and exit.

11.6.2. Disk

Click on the “Disk” thumbnail. This window provides information regarding the internal hard drive as seen on the screenshot below. It provides detailed information including firmware version, serial number, disk total capacity, temperature, and more.



As seen on the screenshot below, the Volume screen provides information regarding the File System used to format the internal hard disk drive, total and available capacity.



Click on the “X” to exit.

11.7. Network Settings

11.7.1 Hostname

The Hostname is a name that is assigned to a device connected to a computer network. The Hostname can be modified to whatever name that will fit your needs. It must begin with a letter and followed by a combination of letters and numbers. Required minimum 2 characters to maximum 8 characters in length.



Click on the “Save” button after making any changes. Click on the “X” to exit and cancel.

11.7.2. Wi-Fi & LAN

The settings inside the WiFi & LAN can be modified based on your needs. See the screenshot below for the available options.



- SSID: Type-in the combination of letters and numbers only. 32 characters is the maximum allowable SSID length
- Channel: The default setting is set to Auto. There are 14 available channels to choose from.
- Modes: The default setting is 11b/g/n. You can also manually set the modes to 11Mbps (802.11b), 54MBPS (802.11G), and 150Mbps (802.11n).
- Security: The default is set to NONE. The WPA-PSK, WPA2-PSK, Mixed WPA/WPA2-PSK are available.
- Password: WPA-PSK , WPA2-PSK , Mixed WPA-PSK/WPA2-PSK: Minimum 8 (Maximum 63) characters.

- IP Address: The default IP address is set to 10.10.10.254 with subnet mask of 255.255.255.0. The IP address can be changed.

Click on the “Save” button after making any changes. Click on the “X” to exit and cancel.

11.7.3. DHCP Server

The DHCP or Dynamic Host Configuration Protocol is a network protocol that enables a server to automatically assign an IP address to a computer connected into a network. By default, the DHCP Server option is enabled. This option can be disabled if needed and the IP address can be manually assigned.



Click on the “Save” button after making any changes. Click on the “X” to exit and cancel.

Click on the “DHCP List” button and it will provide a list of all the computers and devices connected to your Wi-Fi SD/USB Device. Please see the screenshot below.



11.7.4. Internet Settings

There are two available Internet Access options –

- Access Point (AP) + Client. Connecting the Wi-Fi SD/USB to another wireless device to have the internet access.
- WAN. Directly connecting the Wi-Fi SD/USB to the available port on the back the router.



Selecting the AP+Client Option

- SSID. Type-in the SSID name or click on the “Rescan” button to automatically search for the available wireless network connections.
- Password. Type-in the correct password to join the wireless network connection selected.
- IP Address. Select either DHCP or Manually assign an IP address
 - o By selecting DHCP, the host will provide an automatic IP address to connect to the internet
 - o By selecting Manual, you have to manually assign an IP address to connect to the internet

Selecting the WAN Option



By selecting the WAN option, the Dynamic IP is selected as the default setting. You can manually assign your own IP address by clicking on the green arrow and select the Static IP option.

11.8 Network Services

Windows sharing and network services are available to access the Wi-Fi SD/USB

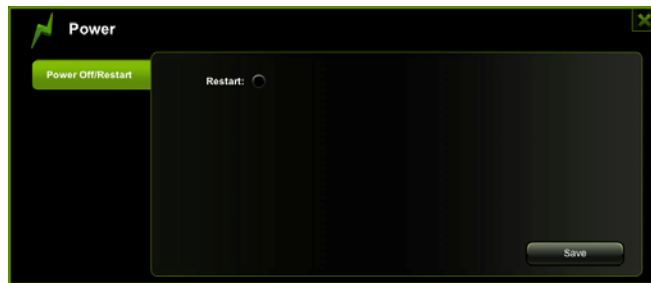
11.8.1. Windows Sharing Services

Data sharing and accessing the Wi-Fi HD product makes it simple by enabling the Windows File Services. By default, this feature is already enabled as seen on the screenshot below.

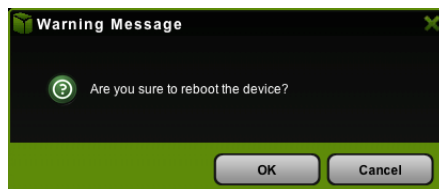


11.8.2. Power Setting

This is another way to reboot/restart the Wi-Fi SD/USB product. Simply click on the radio button and click on the “Save” button to proceed.



Click on the “OK” button to continue on rebooting the device.



11.9. System Settings

11.9.1 Time Settings

The time settings can be changed based on the region on earth you are located. You can choose to synchronize time with the Internet or the time on your PC.

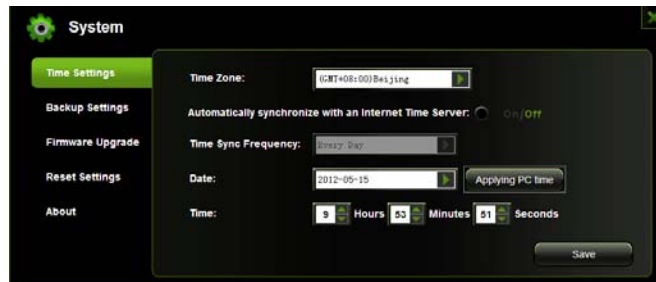
Click on the drop-down list and select the region you are located and switch-on the “Automatically synchronize with an Internet Time Server”. This will automatically update the time when the Wi-Fi SD/USB is connected to the internet.



The “Time Sync Frequency” can be set to everyday, every 2 days, every 3 days, up to every 7 days.

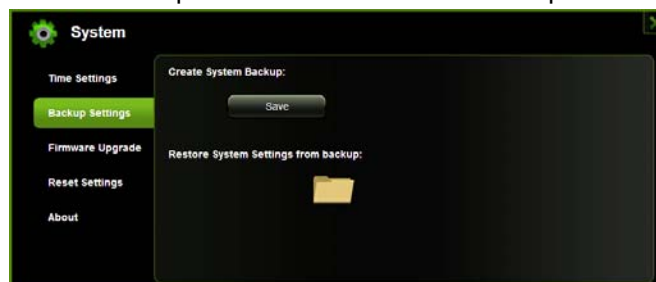
The automatic time synchronization can be switched-off and apply the PC time instead. Applying the PC time will automatically adjust the time and date based on the PC time. See the image below.

Click on the “X” button to exit and cancel the Time Settings.



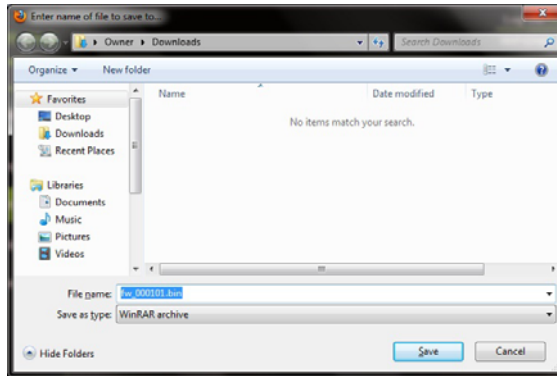
11.9.2. Backup Settings

Creating a backup as seen on the screenshot below can save the Wi-Fi SD/USB system configuration. Please note that this process will not create a backup of the Wi-Fi SD/USB contents.

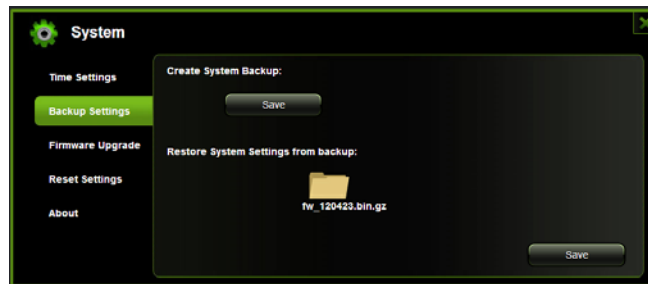


Simply click on the “Save” button create the backup. This process will create a .bin.gz or .bin file of which can be used to restore the current settings of the Wi-Fi SD/USB.

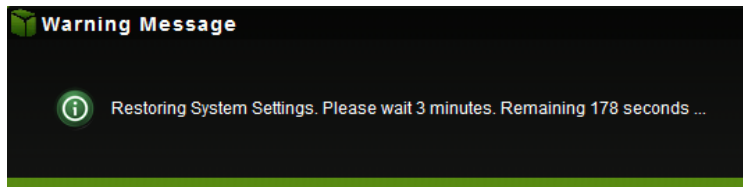
Click the “Save” button to save the backup file on your computer as seen on the screenshot below.



To restore the backup, click the folder icon. Locate and select the .bin or .bin.gz file. The backup file will appear below the folder as seen on the screenshot below. Click on the “Save” button to restore.



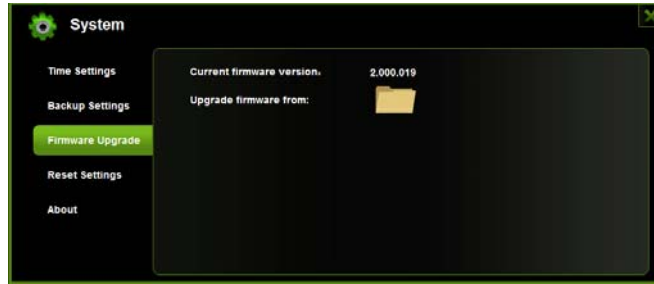
A warning message will appear as seen on the screenshot below.



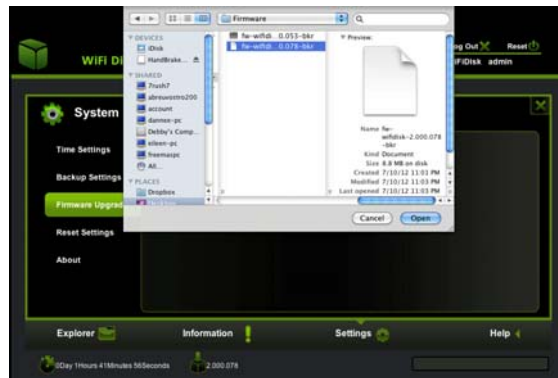
The device will reboot automatically once the restore process has been completed and will return to login screen.

11.9.3. Firmware Upgrade

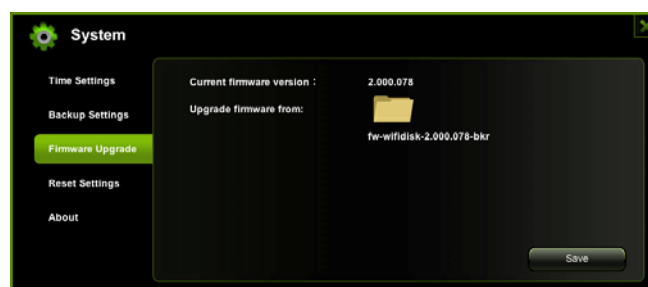
The device firmware can be upgraded by following the simple steps below.



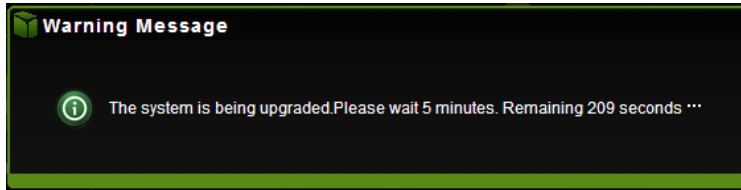
1. Download and save the latest firmware version on your computer.
2. Click on the folder icon, search and locate the firmware file on your computer and then click on the “Open” button as seen on the screenshot below.



3. The latest firmware update file will appear at the bottom of the folder. Click on the “Save” button to continue updating the firmware.

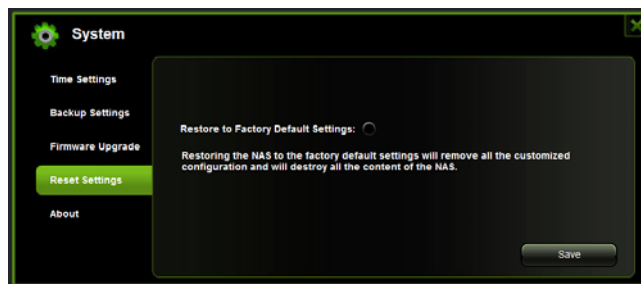


4. Once the firmware has been installed, the warning message as seen on the screenshot below will appear and the device will automatically reboot and will go back into the login screen.



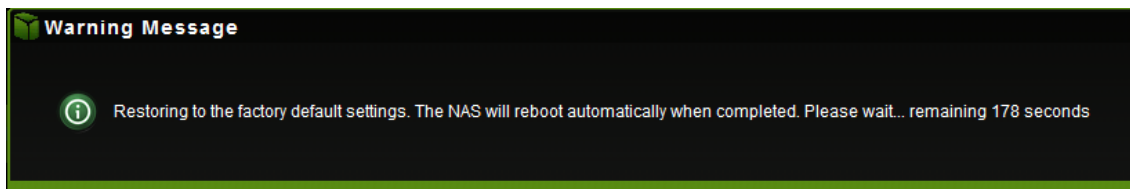
11.9.4. Resetting to factory defaults

Resetting to factory defaults will reset all your customized settings or whatever changes you made back to its original settings.



Simply click on the radio button after the "Restore to Factory Default Settings:" Click on the "Save" button to continue.

The Warning Message window will appear. The Wi-Fi SD/USB will automatically reboot once the restoring to the factory default settings have been completed. See the screenshot below.



Note: This process will reset the Wi-Fi SSID, and the password including the admin password.

11.9.5. About Settings

The About screen provides information such as the HostName, Device Serial Number and Model Number, MAC address, CPU and Memory utilization as seen on the screenshot below.



12. Help

The Help icon provide information and basic instructions on how to setup and configure the Wi-Fi SD/USB production.

FCC Statement

This equipment has been tested and found to comply with the limits for a Class B digital device, pursuant to part 15 of the FCC Rules. These limits are designed to provide reasonable protection against harmful interference in a residential installation. This equipment generates, uses and can radiate radio frequency energy and, if not installed and used in accordance with the instructions, may cause harmful interference to radio communications. However, there is no guarantee that interference will not occur in a particular installation. If this equipment does cause harmful interference to radio or television reception, which can be determined by turning the equipment off and on, the user is encouraged to try to correct the interference by one or more of the following measures:

- Reorient or relocate the receiving antenna.
- Increase the separation between the equipment and receiver.
- Connect the equipment into an outlet on a circuit different from that to which the receiver is connected.
- Consult the dealer or an experienced radio/TV technician for help.

FCC Radiation Exposure Statement

This equipment complies with FCC RF radiation exposure limits set forth for an uncontrolled environment. This transmitter must not be co-located or operating in conjunction with any other antenna or transmitter. This equipment should be installed and operated with a minimum distance of 20 centimeters between the radiator and your body.

This equipment complies with Part 15 of the FCC Rules. Operation is subject to the following two conditions:

- (1) This device may not cause harmful interference, and
- (2) This device must accept any interference received, including interference that may cause undesired operation.

Caution!

The manufacturer is not responsible for any radio or TV interference caused by unauthorized modifications to this equipment. Such modifications could void the user authority to operate the equipment.