

# Power 7 WiFi Storage Device(ATOMIC100) Datasheet

---



## Table of Content

Introduction .....	2
Target Users/Markets .....	2
Features .....	3
Applications .....	4
Hardware Specifications .....	5
Interface Illustration .....	6
Software Specifications .....	7
File & System Manager App .....	9
System Requirements .....	9
Client Tools .....	9
ATOMIC100 on the Beach .....	10

Version 1.0

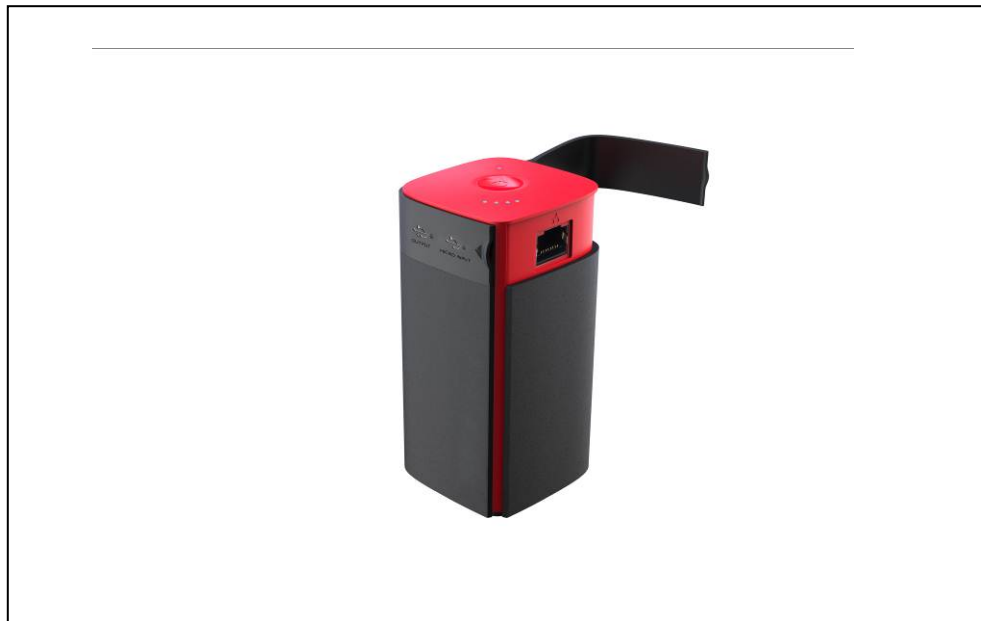
Last Updated: April 21, 2014

Author: P7 PM Department

[pm@power7tech.com.cn](mailto:pm@power7tech.com.cn)

## Introduction

Power7 WiFi dongle device(Project Name: ATOMIC100)is a portable wireless storage device with one USB 2.0 host. ATOMIC100 allows you to convert any USB external storage devices into a WiFi accessible media. Connect your USB external storage into the built-in USB port. Power the unit on and you can now wirelessly access your videos, music, photos, data and stream it to your iPad®, iPhone®, tablets, smartphones, and notebooks. There is no need to worry about running out of space on your mobile devices. As simple as 1-2, you are ready to enjoy your device and no waiting needed. Without the wired limitation, you can enjoy listening to music while travelling with ATOMIC100 in your backpack, share photo with your family by placing it at any house corner or lay back watching movies in the beach – with a range of up to 150ft you'll never feel tethered to your ATOMIC100. Best of all, the ATOMIC100 can bridge the Internet connection to your existing wireless/wired router, so you may access the data in the storage while surfing the Internet simultaneously. Also it can works as a powerbank to charge your phone/PADs, unto 2.1A output current.



## Target Users/Markets

- **Mobile Device User**

iPhone®, iPad®, smartphone, tablet or notebook user may unleash from very limited storage capacity by throwing large files such as movies, music or PowerPoint files to ATOMIC100. Also it is your mobile device's powerback.

- **Frequent Business Traveler**

Businessman may show customer the product datasheet, contract or quotation in ATOMIC100



---

anytime in the coffee shop, meeting room or hotel. Also it is your mobile device's powerback.

- **Movies & Music Download Mania**

Have already downloaded hundreds or thousands of movies, music by BitTorrent at home but you can not enjoy watching or listening to them while you are outside? ATOMIC100 is the solution for you.

- **Salesman**

ATOMIC100 may save mobile sales person like insurance broker, realty broker from carrying bulky brochure or flyers.

- **Legacy USB External HDD Device Hater**

Just can not stand anymore to be tethered by USB cable whenever you need to transfer files between your notebook and external HDD? ATOMIC100 is the answer for you!

- **Small Enterprise Mobile NAS**

The critical and confidential business data should not be bound to the file server or NAS in your company. ATOMIC100 allows you to have a backup of your important data which is portable with you.

- **Home Mobile NAS**

With ATOMIC100 at home, you do not need to always turn on your notebook in order to share data with your family. Moreover, ATOMIC100 can be your portable entertainment center while your family goes out for vacation.

## Features

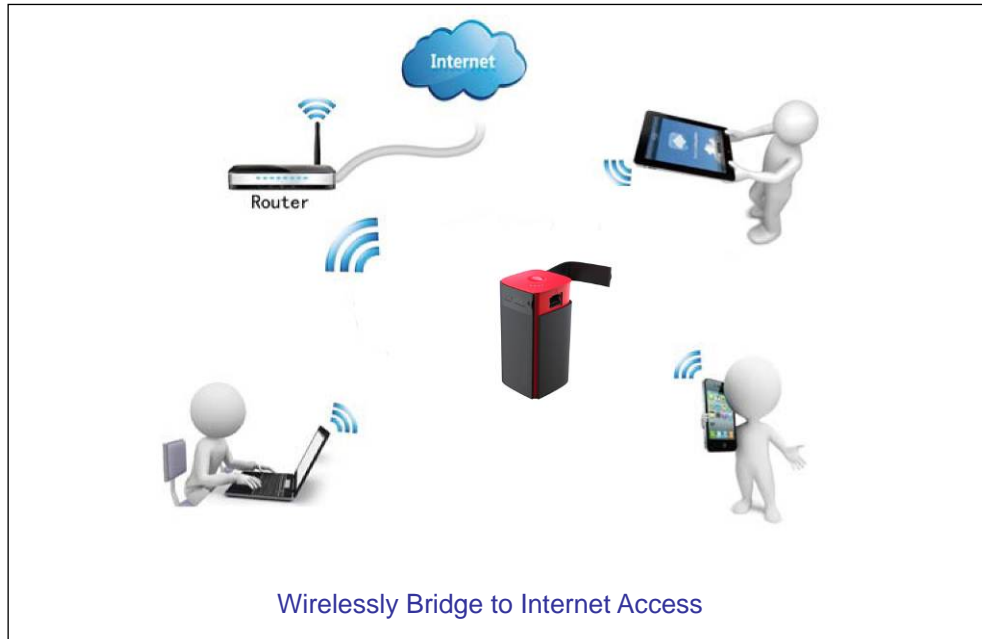
- 96mm(L)x44mm(W)x44mm(H).
- Stream media over wireless enabled services up to 5 users simultaneously
- Supports various personal computer and mobile operating systems to access and stream music, videos, photos and documents.
- Built-in 10400mAh battery
- Built-in USB-A Port to support External USB Mass Storage and charging USB powered devices up to 2.1A/5V max.
- Wireless or Wired(RJ45) Internet pass-through connection, supporting IEEE 802.11 b/g/n speeds and works as an Access Point.
- Available mobile app with copy, delete, upload and search function to locate and access the files much faster.



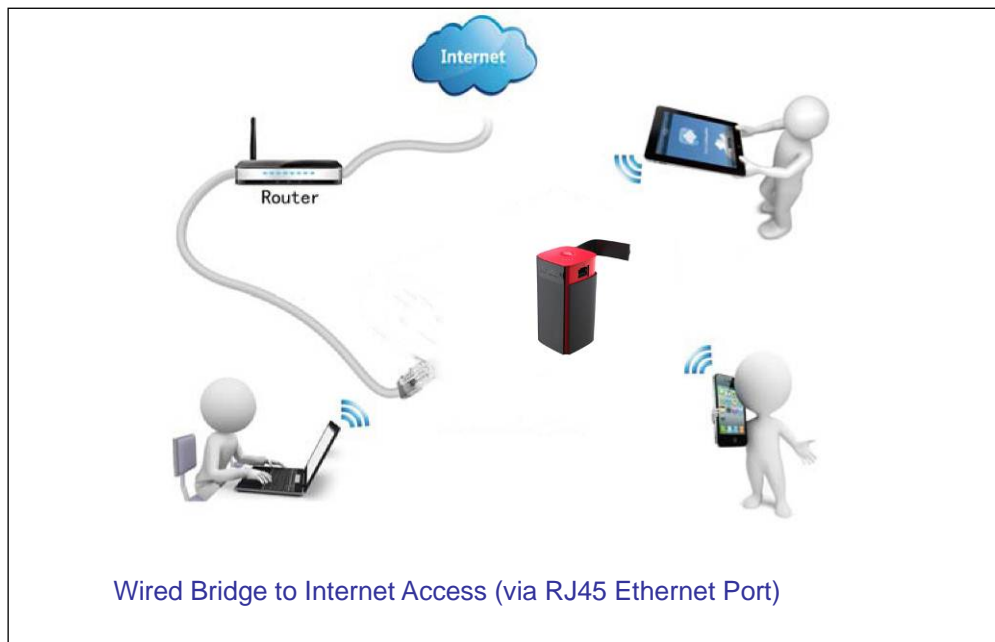
## Applications

- **Bridge to Internet Access**

**Scenario 1 - If you got an existing WiFi router for Internet access**



**Scenario 2- If you got an existing wired router for Internet access**





## Hardware Specifications

Project name	ATOMIC100	
Model name	ATO-WIFI-USB	
CPU	Model	MTK 7620
	Frequency	MIPS24KEc 360MHZ
Flash	Type	SPI Flash
	Capacity	8MByte SPI flash
Memory	Type	SDRAM
	Capacity	32MB*16Bits(64MB)
WiFi	standard	802.11 b/g/n
	Transceiver	1TX 1RX
	Frequency	2.4GHz
	Antenna	Chip Antenna
	Speed	72Mbps for 20MHz 150Mbps for 40MHz
WAN port	Protocol	Ethernet
	Speed	100Mbit/s
Interface	Battery LED (Blue*4pcs)	LED light to show the percentage of remaining power. As below : LED1: 0~25% LED2:26~50% LED3:51~75% LED4:76~100%
	WiFi LED/WLAN (Blue/Green)	WiFi LED shows the system initiating state: Blue LED Start flashing: Kernel loading in process Blue LED Stop flashing: System initiation completes GreenLED: Internet is connected successful
	Power button	1. Power on/off button (3 second long pressing) 2. percentage of remaining power

		button(short pressing)
	Reset button	Factory default reset button
	USB device interface	Micro USB 2.0 for charging internal battery, upto 1.6A current.
	USB host interface	In power on mode , it can connect USB storage for WiFi accessing. In power on & off mode, It can charge your mobile device(iPhone/iPAD/iPAD mini, other smart phone/PAD) , up to 2.1A current.
	WAN port	RJ45 100Mbit/s
Battery	Capacity	10400mAh 4 x18650 battery
	Charging current	1.6A
	Discharge Current	Max 2.1A
	Over current protection	Up to 2.1A by CMOS PWM
Environmental requirements	<ul style="list-style-type: none"> <li>• Operating Temperature: 5°C to 35°C</li> <li>• Non-Operating Temperature: 0°C to 60°C</li> <li>• Operating Humidity: 5% to 90% (Non-condensing)</li> <li>• Non-operating Humidity: 5% ~ 90 % (Non-condensing)</li> </ul>	
Product dimension	96mm L x44mm W x 44mm H	
Emission (EMI), Safety & Other Certifications	<ul style="list-style-type: none"> <li>• FCC Class B</li> <li>• CE</li> </ul>	

## Interface Illustration





## Software Specifications

System setting	Language selection	To select your native languages
	Firmware upgrade	To upgrade firmware by web browser
	Configuration setting	To backup and retrieve system configuration setting
	Factory default setting restore	To restore default system setting originated in factory production
File system	NTFS	A) Support Microsoft Windows NTFS file system B) Application tools: <ul style="list-style-type: none"><li>• Tuxera NTFS tool for mounting file system</li><li>• NTFS file system inspection and repair tool</li></ul>
	FAT16/FAT32	A) Support Microsoft Windows FAT16/FAT32 file system B) Application tools: FAT file system inspection and repair tool
File service	CIFS protocol	Provide shared services to files for clients on Microsoft Windows Network
	Samba service	Provide shared services to files and printers for clients on Microsoft Windows Network and Unix-Like Network
	Media Server	Support DLNA compatible device
HTTP service	OS	A build-in browser which support common operation system such as Windows, Linux, Mac® OS and smart terminal for easy management
	WebDAV protocol	Makes the Web a readable and writable medium which allow users to edit and manage documents and files stored on World Wide Web servers
Access control	Password protection	A) WiFi access control: <ul style="list-style-type: none"><li>• None</li><li>• WPA</li><li>• WPA2</li><li>• WPA&amp;WPA2</li></ul> B) WEB access control <ul style="list-style-type: none"><li>• Password login</li></ul> C) Samba access control <ul style="list-style-type: none"><li>• Password login</li></ul>



		<p>Default security:</p> <p>A) Authentication needed with password 11111111</p> <p>B) No authentication</p> <p>C) No authentication</p>
USB storage management	Storage display	
	Storage partition size and remaining space display	
Network Management	WAN side setting	<p>A) Static IP</p> <p>B) Dynamic IP</p>
	LAN side setting	<p>A) ATOMIC100 IP setting</p> <p>B) Subnet mask setting</p> <p>C) DHCP server setting</p> <p>D) Default gateway setting</p> <p>E) Default DNS setting</p>
	WiFi setting	<p>A) WiFi mode setting</p> <p>B) WiFi basic setting</p> <p>C) WiFi security setting</p>
Application software	Client	<p>A) Windows XP/2003/Vista/7/8, Linux, Unix, Mac®</p> <p>B) Android: tablet, smartphone</p> <p>C) iOS: iPad®, iPhone®</p>
File Formats	iOS Client	<p><b>A) Audio:</b> Support formats of <b>MP3, AAC, m4a, wav, aiff</b></p> <p><b>B) Video:</b> Support formats of <b>MP4, MOV, m4v, avi</b></p> <p><b>C) Photo:</b> Support formats of <b>jpg, tiff, bmp, gif(image)</b></p> <p><b>D) Document:</b> Support formats of <b>keynote, numbers, page, excel, word, pdf, txt, ppt</b></p>
	Android Client	<p>A) Audio: Support formats of <b>MP3</b>, Video:MP4</p> <p>B) Photo: Support formats of <b>.jpg, .png</b></p> <p>C) Document: Support formats of <b>txt, word, excel, ppt and pdf</b></p> <p><b>Note:</b> other file formats support is based on the android product OS performance</p>





---

## File & System Manager App

- Support the keyword search function from the current folder
- Support the file list/thumbnail view, support thumbnail images show and MP3 artwork shows; Support gravity sensor switch direction
- Support checkmark/delete function and support local/WiFi Storage data transmission in between
- Playing music/video/photos by iPhone®, iPad® and tablet and smartphone (JPG, mp3, mp4, decoding ability more dependent on the system, file format depend on the player software installed on you device, Power7 suggest to use MX player/Mobo Player on the Android and Oplayer/GoodPlayer on iOS)
- Support to play the photos by filmstrip mode and support background music playing
- Support video drag and play
- Support music artwork shows, circulation play set, drag operation
- Support email to send out pictures/documents
- Support network and ATOMIC100's parameters setting
- Transfer videos and photos from and to the iPhone®, iPad® to ATOMIC100

## System Requirements

- iPhone®, iPad®, smartphone, tablet or computer with Wi-Fi connectivity (802.11 b/g/n)
- Mac® or PC computer running Windows 8,7, Windows Vista, Windows XP or Mac OS® X 10.6.0 or later operating system for loading media on to ATOMIC100 via USB

## Client Tools

### ■ Computer Client Tool

- Auto search and access the ATOMIC100 on WLAN
- Supports Windows XP/2003Vista/7 /8 and Mac® iOS operation system

### ■ Mobile Application Tool

- Supports iOS (iPhone® and iPad®) and Android (smartphone and tablet)
- Stream audios and videos and view photos from the ATOMIC100

## FCC Statement

This equipment has been tested and found to comply with the limits for a Class B digital device, pursuant to part 15 of the FCC Rules. These limits are designed to provide reasonable



---

protection against harmful interference in a residential installation. This equipment generates, uses and can radiate radio frequency energy and, if not installed and used in accordance with the instructions, may cause harmful interference to radio communications. However, there is no guarantee that interference will not occur in a particular installation. If this equipment does cause harmful interference to radio or television reception, which can be determined by turning the equipment off and on, the user is encouraged to try to correct the interference by one or more of the following measures:

- Reorient or relocate the receiving antenna.
- Increase the separation between the equipment and receiver.
- Connect the equipment into an outlet on a circuit different from that to which the receiver is connected.
- Consult the dealer or an experienced radio/TV technician for help.

## **FCC Radiation Exposure Statement**

This device complies with FCC SAR exposure limits set forth for an uncontrolled environment. SAR compliance for using the equipment in close proximity to the human body has been evaluated at 5mm.

This device complies with Part 15 of the FCC Rules. Operation is subject to the following two conditions: (1) this device may not cause harmful interference, and (2) this device must accept any interference received, including interference that may cause undesired operation.

## **Caution!**

Any changes or modifications not expressly approved by the party responsible for compliance could void the user's authority to operate the equipment.

## ATOMIC100 on the Beach



Are you ready to have a completely relaxing vacation on the beach with ATOMIC100?

### USA OFFICE

World Headquarters  
4601 E. Airport, Drive, Ontario, CA 91761, USA  
<http://www.power7tech.com>  
[sales@power7tech.com](mailto:sales@power7tech.com)  
Tel: 909.230.6788 Fax: 909.230.6889

### TAIWAN OFFICE

Power 7 Technology Corporation  
5F-3, No.258, Liancheng Road, Zhonghe  
District, New Taipei City 235, Taiwan(R.O.C.)  
<http://www.power7tech.com.tw>  
[sales@power7tech.com.tw](mailto:sales@power7tech.com.tw)  
Tel: 886.2.8227.1790 Fax: 886.2.8227.1026

### CHINA OFFICE

Power 7 (Shenzhen)Technology Company, Ltd.  
Building A, Zhangkeng Industry Zone, Minfu Road Minzhi  
Village, Longhua Town, Baoan District Shenzhen, Guangdong  
Province PR, China  
<http://www.power7tech.com.cn>  
[pm@power7tech.com.cn](mailto:pm@power7tech.com.cn)  
Tel: 86.755.8886.8949 Fax: 86.755.8179.8032