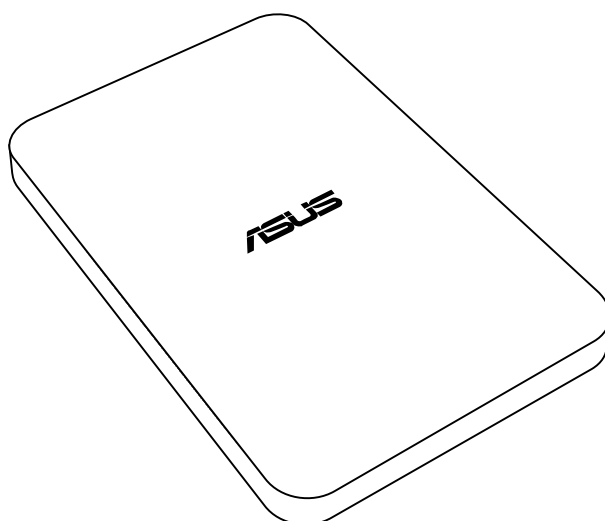




Travelair N

Wireless Storage



User Guide

E10187

First Edition

May 2015

Copyright © 2015 ASUSTeK Computer Inc. All Rights Reserved.

No part of this manual, including the products and software described in it, may be reproduced, transmitted, transcribed, stored in a retrieval system, or translated into any language in any form or by any means, except documentation kept by the purchaser for backup purposes, without the express written permission of ASUSTeK Computer Inc. ("ASUS").

Product warranty or service will not be extended if: (1) the product is repaired, modified or altered, unless such repair, modification or alteration is authorized in writing by ASUS; or (2) the serial number of the product is defaced or missing.

ASUS PROVIDES THIS MANUAL "AS IS" WITHOUT WARRANTY OF ANY KIND, EITHER EXPRESS OR IMPLIED, INCLUDING BUT NOT LIMITED TO THE IMPLIED WARRANTIES OR CONDITIONS OF MERCHANTABILITY OR FITNESS FOR A PARTICULAR PURPOSE. IN NO EVENT SHALL ASUS, ITS DIRECTORS, OFFICERS, EMPLOYEES OR AGENTS BE LIABLE FOR ANY INDIRECT, SPECIAL, INCIDENTAL, OR CONSEQUENTIAL DAMAGES (INCLUDING DAMAGES FOR LOSS OF PROFITS, LOSS OF BUSINESS, LOSS OF USE OR DATA, INTERRUPTION OF BUSINESS AND THE LIKE), EVEN IF ASUS HAS BEEN ADVISED OF THE POSSIBILITY OF SUCH DAMAGES ARISING FROM ANY DEFECT OR ERROR IN THIS MANUAL OR PRODUCT.

SPECIFICATIONS AND INFORMATION CONTAINED IN THIS MANUAL ARE FURNISHED FOR INFORMATIONAL USE ONLY, AND ARE SUBJECT TO CHANGE AT ANY TIME WITHOUT NOTICE, AND SHOULD NOT BE CONSTRUED AS A COMMITMENT BY ASUS. ASUS ASSUMES NO RESPONSIBILITY OR LIABILITY FOR ANY ERRORS OR INACCURACIES THAT MAY APPEAR IN THIS MANUAL, INCLUDING THE PRODUCTS AND SOFTWARE DESCRIBED IN IT.

Products and corporate names appearing in this manual may or may not be registered trademarks or copyrights of their respective companies, and are used only for identification or explanation and to the owners' benefit, without intent to infringe.

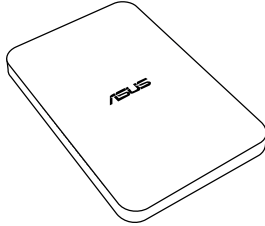
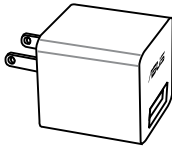
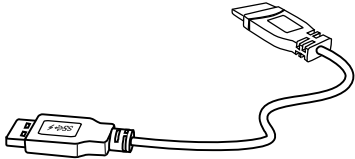
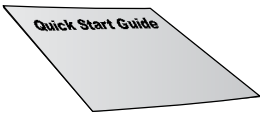

Contents

- Travelair N specifications summary4
- Package contents4
- Getting to know your Travelair N.....5
- Charging your Travelair N6
- Installing / removing a memory card.....6
- Connecting your mobile device.....6
- Connecting via NFC One Touch8
- Assigning a unique SSID or network name for your Travelair N.....9
- Setting up the admin/guest password..... 10
- Changing the admin/guest password..... 12
- Connecting to the Internet..... 14
- Sharing files to guest users..... 15
- Sharing files via Facebook or email..... 18
- Safety Notice..... 20

Travelair N specifications summary

Interface	USB 3.0 / Wi-Fi
Drive Capacity	500 GB / 1 TB / 2 TB
Battery	Non-replaceable Lithium-ion battery
Dimension	140 x 90 x 25.5 mm
Weight	350 g
Supported devices	<p>iOS mobile device: iPad, iPhone, and iPod Touch (iOS 7 and later version)</p> <p>Android mobile device: Tablet and smartphone (Android 4.0 and later version)</p> <p>Windows® computer: Windows® 7, Windows® 8, and later version</p> <p>Mac computer: Mac OS x10.6 or later version</p>
Supported file types	<p>iOS devices</p> <p>Photos: .jpg, .tiff, .bmp, .gif</p> <p>Videos: .mp3, .mp4, .mov</p> <p>Music: .mp3, .mp4, .wav, .aiff</p> <p>Documents: .xls/.xlsx, .doc/.docx, .pdf, .txt, .ppt/.pptx</p> <p>Android and Windows® devices Depends on the file types that your device apps support</p>

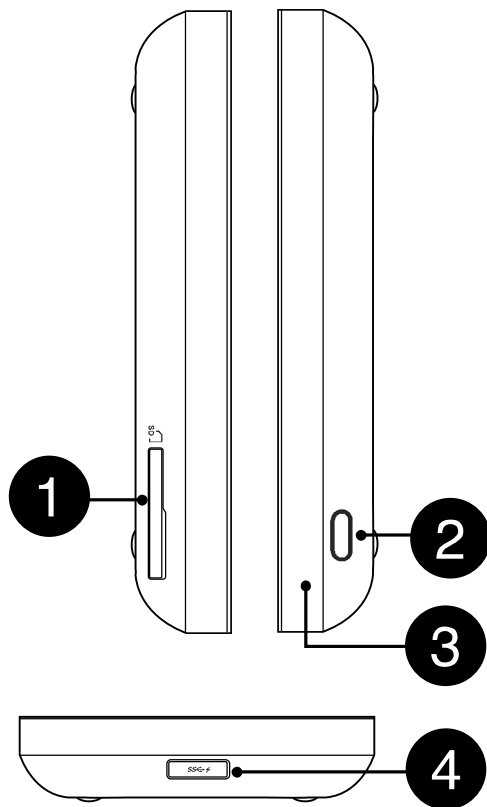
Package contents

		
ASUS Travelair N	Power adapter	USB 3.0 power cable
		
Quick Start Guide	Warranty card	

NOTES:

- If any of the items is damaged or missing, contact your retailer.
- The quantity and type of power adapter varies per region.

Getting to know your Travelair N



1	SD card compartment Open the compartment and insert a Secure Digital™ (SD) card into the slot.
2	Power button Press this button to turn your Travelair N on/off.
3	LED indicators Shows the status of your Travelair N. ⏻ Blinking blue: Long press the power button for about two (2) seconds to establish Wi-Fi connection Solid blue: Wi-Fi is ready 🔌 Blinking green: Travelair N is booting up Solid green: Travelair N is ready
4	USB 3.0 interface port compartment Open the compartment and insert the bundled USB 3.0 cable into the port to charge your Travelair N or connect it to your computer.*

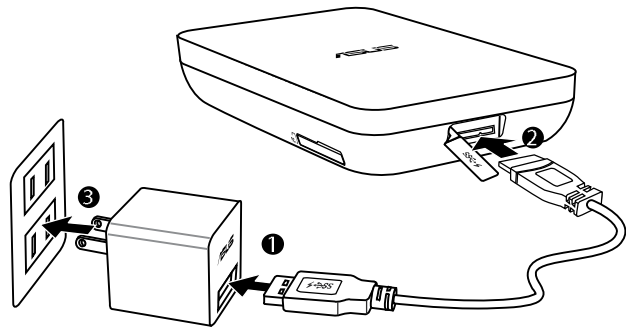
NOTE: *To use your Travelair N as a standard hard drive, turn it off before connecting it to your computer.

Charging your Travelair N

Fully charge your device for at least eight (8) hours when using it for the first time.

To charge your Travelair N:

1. Connect the USB 3.0 connector into the USB port of the power adapter.
2. Open the USB 3.0 interface port compartment and connect the other end of the USB 3.0 cable to your Travelair N.
3. Plug the power adapter into a wall socket.



NOTE: Use only the power adapter that came with your device. Using a different power adapter may damage your device.

Installing / removing a memory card

Your Travelair N supports a Secure Digital™ (SD) memory card with up to 128 GB capacity.

To install/remove a memory card:

1. Open the SD card compartment at the left side of your Travelair N.
2. To install, insert the SD card into the slot until it is securely in place. To remove, push to eject then remove the SD card from the slot.
3. Close the SD card compartment.

Connecting your mobile device

Connect your mobile device to wirelessly view or play media files such as photos, videos, or music from your Travelair N. You can also share your stored media files to your guest users, to Facebook, or an email account.

NOTES:

- Ensure that the Wi-Fi function in your mobile device is turned on.
 - You can also connect your NFC-enabled device to your Travelair N. For details, refer to the section **Connecting via the NFC One Touch**.
-

To connect your mobile device:

1. On your Travelair N, long press the power button until the blinking blue Wi-Fi icon appears.
2. On your mobile device, tap the SSID or network name **Travelair-XXXX** to connect to your Travelair N.

NOTE: You can assign a unique SSID or network name for your Travelair N. For details, refer to the section **Assigning a unique SSID to your Travelair N**.

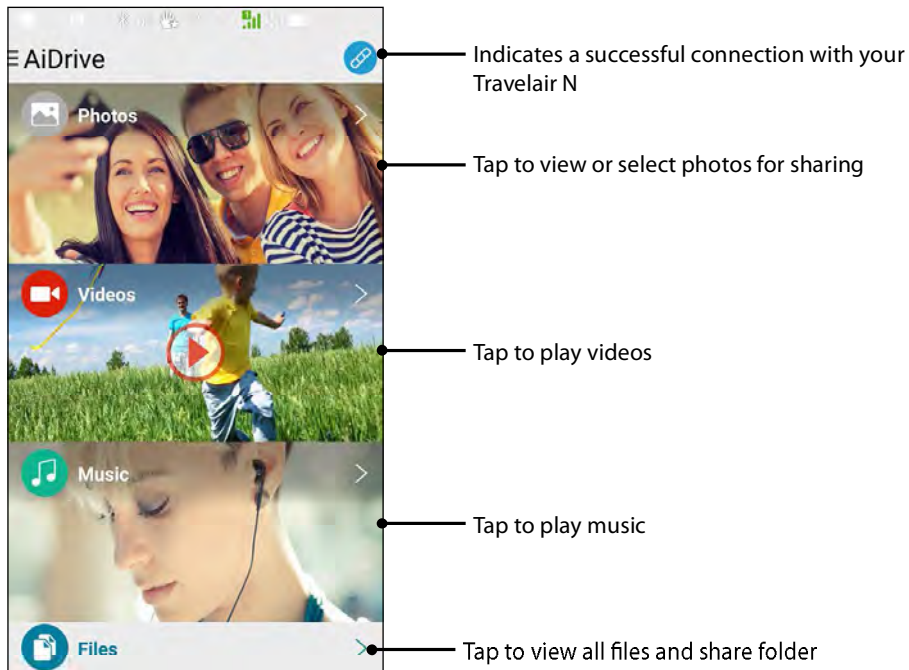
3. Ensure that you download and install the ASUS AiDrive app on your mobile device.

NOTE: Download the ASUS AiDrive app from Google Play, App Store, or Amazon Appstore.

4. Launch and log into the ASUS AiDrive app. There is no default password, so you can skip the password field when logging in for the first time.

IMPORTANT! Set up your password when using your Travelair N for the first time to secure it from unauthorized access. For details, refer to the section **Setting up the admin/guest password.**

5. You can now wirelessly access the media files from your Travelair N.

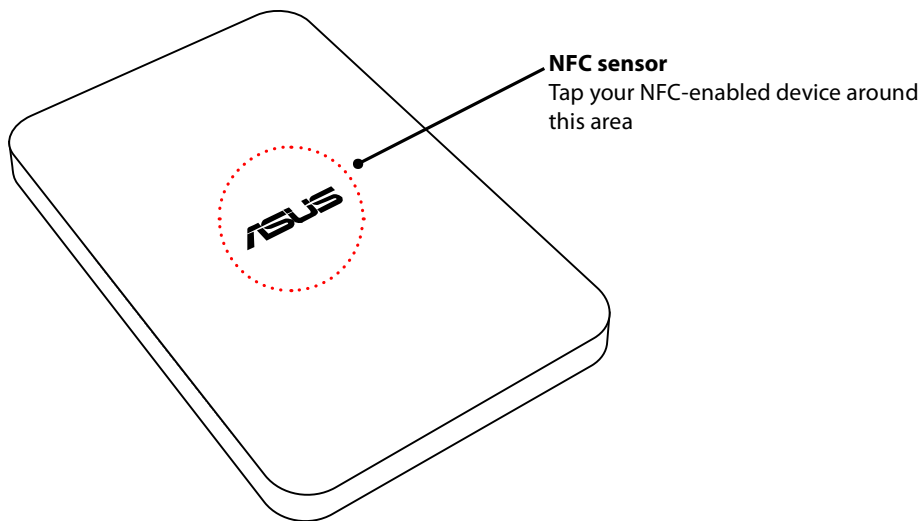


Connecting via NFC One Touch

With just one touch or tap of your NFC-enabled mobile device on your Travelair N, you can gain wireless access to your stored media files.

To connect via NFC One Touch:

1. Turn on the NFC function of your mobile device.
2. Turn on your Travelair N.
3. Touch or tap your NFC-enabled device on the center of your Travelair N.
4. The AiDrive app launches automatically. You can now log into the AiDrive app and wirelessly access the media files from your Travelair N.



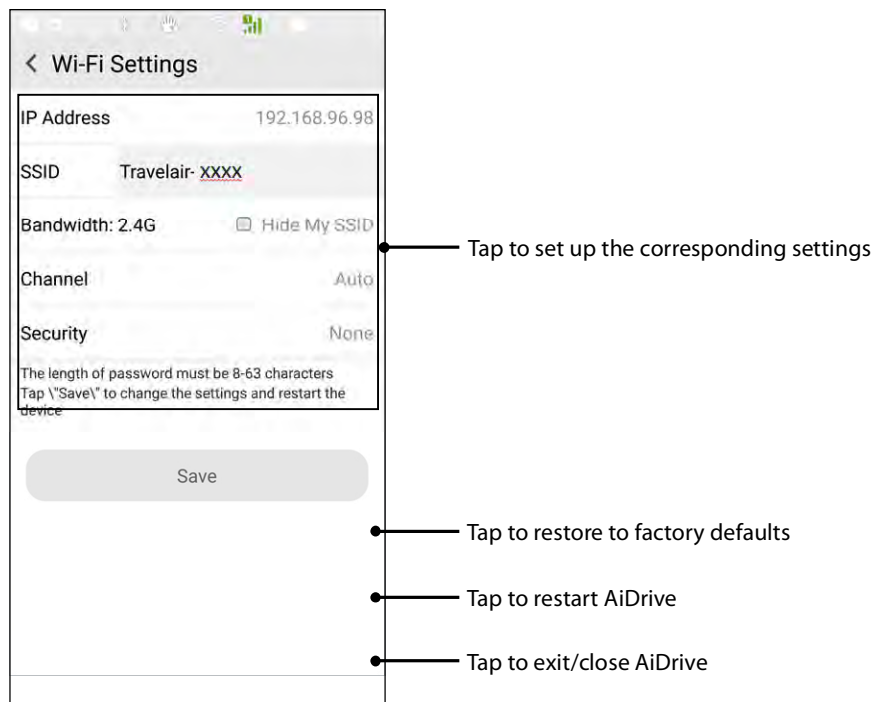
IMPORTANT! Your NFC-enabled mobile device must run on Android 4.0 or later version.

Assigning a unique SSID or network name for your Travelair N

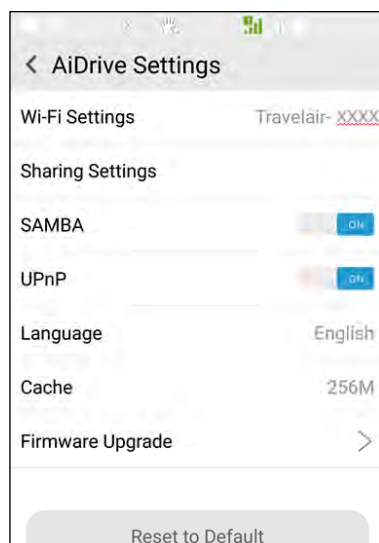
You can change the default SSID or network name and assign a unique one for your Travelair N.

To assign a unique SSID or network name for your Travelair N:

1. On the AiDrive home screen, swipe from the left to display the app menu.
2. Tap **AiDrive Settings**.



3. Tap **Wi-Fi Settings** and in the **Name** field, enter a unique name with at least eight (8) characters.
4. When done, tap **Save**.
5. You need to restart your device for the changes to take effect.



Setting up the admin/guest password

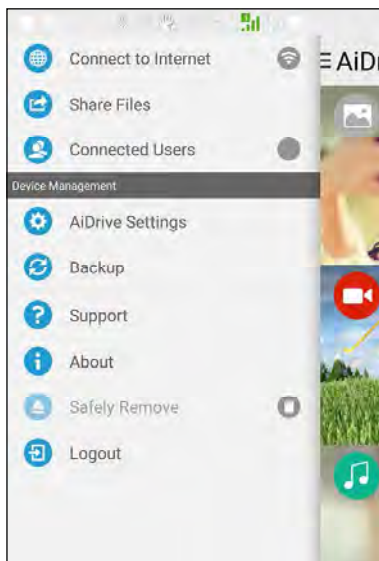
Set up the admin and guest passwords to secure your Travelair N and its contents from unauthorized access.

NOTE: Up to five (5) users, including the admin user, can simultaneously access the Travelair N.

Setting up the admin password

To set up the admin password:

1. On the AiDrive home screen, swipe from the left to display the app menu.
2. Tap **AiDrive Settings**.



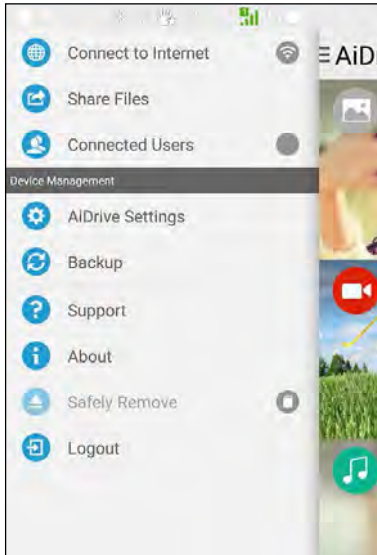
3. Tap **Sharing Settings > Admin Password**.
4. When setting up the admin password for the first time, leave the **Old Password** field blank.
5. Enter 5-32 alphanumeric characters in the **New Password** field.
6. Enter the admin password again in the **Confirm Password** field, then tap **Save**.



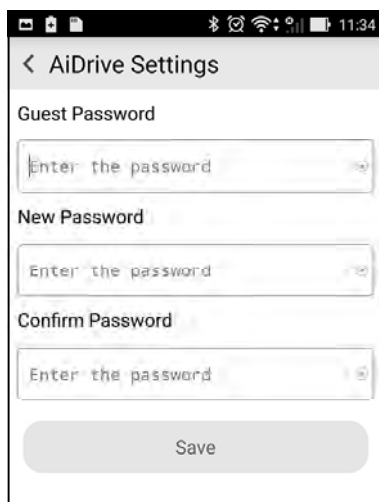
Setting up the guest password

To set up the guest password:

1. On the AiDrive home screen, swipe from the left to display the app menu.
2. Tap **AiDrive Settings**.



3. Tap **Sharing Settings**, then turn **Allow Guest User** to **ON**.
4. Tap **Guest Password**.
5. When setting up the guest password for the first time, leave the **Old Password** field blank.
6. Enter 5-32 alphanumeric characters in the **New Password** field.
7. Enter the admin password again in the **Confirm Password** field, then tap **Save**.

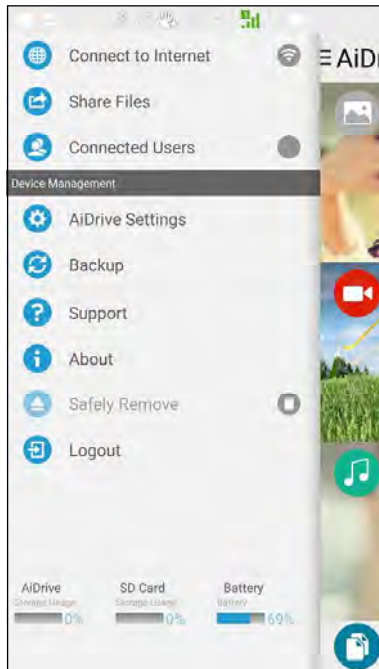


Changing the admin/guest password

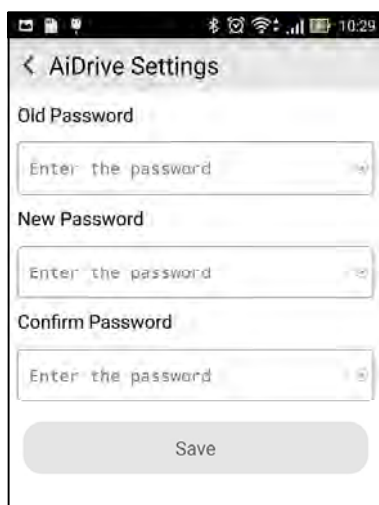
Changing the admin password

To change the admin password:

1. On the AiDrive home screen, swipe from the left to display the app menu.
2. Tap **AiDrive Settings**.



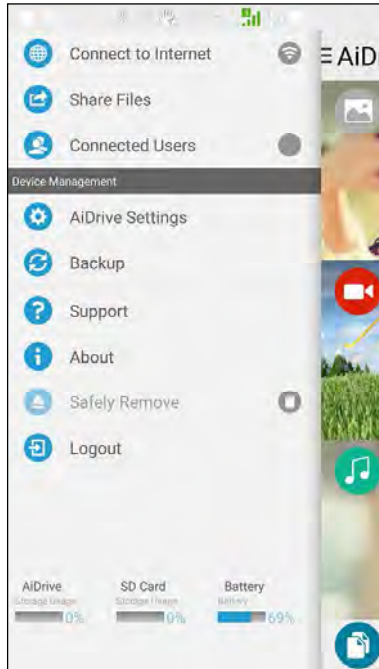
3. Tap **Sharing Settings > Admin Password**.
4. On the **Old Password** field, enter the previously assigned admin password.
5. Enter 5-32 alphanumeric characters in the **New Password** field.
6. Enter the admin password again in the **Confirm Password** field, then tap **Save**.



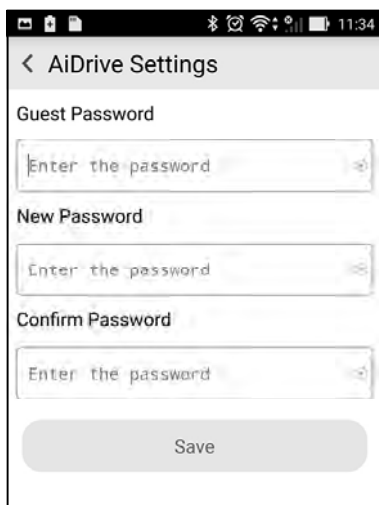
Changing the guest password

To change the guest password:

1. On the AiDrive home screen, swipe from the left to display the app menu.
2. Tap **AiDrive Settings**.



3. Tap **Sharing Settings**, then turn **Allow Guest User** to **ON**.
4. Tap **Guest Password**.
5. On the **Guest Password** field, enter the previously assigned guest password.
6. Enter 5-32 alphanumeric characters in the **New Password** field.
7. Enter the guest password again in the **Confirm Password** field, then tap **Save**.

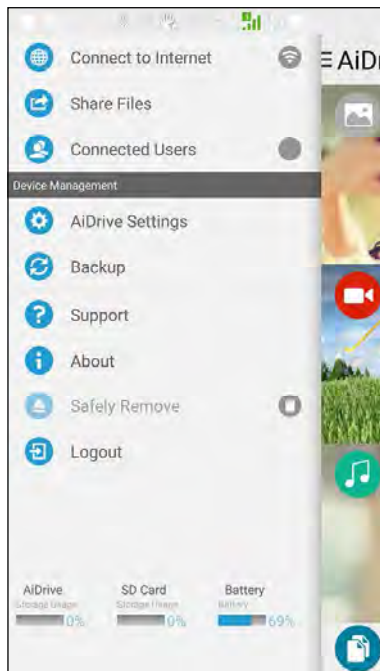


Connecting to the Internet

Connect to the Internet to share your media files to Facebook or an email account.

To connect to the Internet:

1. On the AiDrive home screen, swipe from the left to display the app menu.
2. Tap **Connect to the Internet**.
3. Slide **Wi-Fi Connection** to **ON**.
4. From the list, tap the Wi-Fi network that you want to connect to.
5. When prompted, enter the security passkey for the Wi-Fi network that you are connecting to.



Sharing files to guest users

You can share your media files from your Travelair N or mobile device to your authorized guest users.

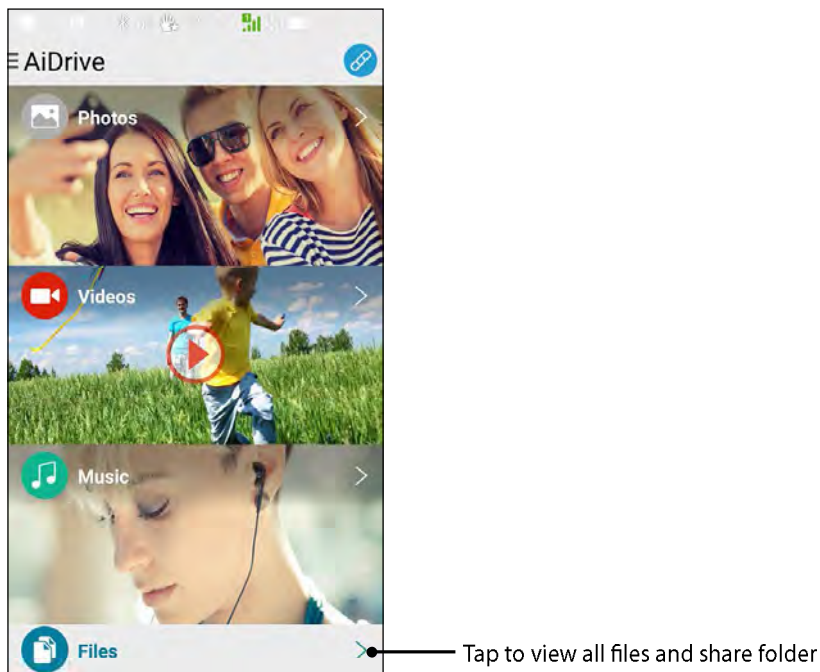
NOTE: For details on granting access to guest users, refer to the section **Setting up the admin/guest password**.

IMPORTANT! For your guest users to access your shared media files, ensure the following:

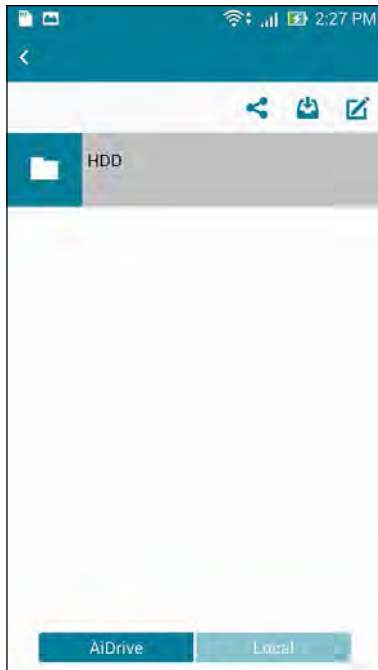
- AiDrive app is installed on the guest users' mobile devices.
 - The guest users' mobile devices are connected to your Travelair N. For details, refer to the section **Connecting your mobile device**.
-


To share files to guest users:

1. On the AiDrive home screen, tap **File/Folder**.




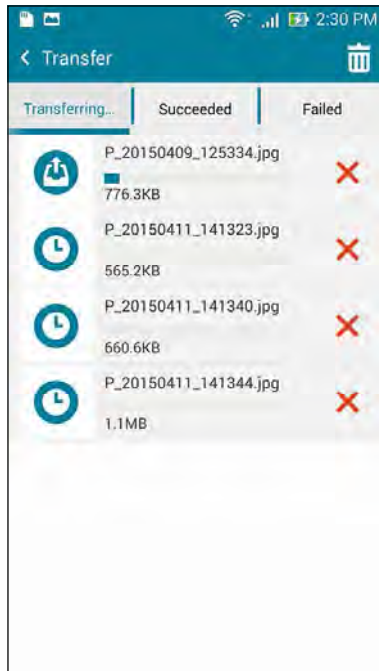
- To select files from the internal directory of your Travelair N, tap **AiDrive** > **HDD**. To select files from your SD or microSD card, tap **Local** then tap **SD Card** or **microSD**.



- Select the photos you want to share, then tap  > **Copy**.



4. Tap **AiDrive** > **HDD** > **Share**, select the share folder, then tap  > **Paste**. Wait for a while until the file transfer process is completed.




Sharing files via Facebook or email

You can share your media files from your Travelair N or mobile device to Facebook or an email account.

NOTE: Ensure that your device has Internet connection. For details, refer to the section **Connecting to the Internet**.

Sharing files from your Travelair N to Facebook or email

To share files from your Travelair N to Facebook or email:

1. On the AiDrive home screen, tap **File/Folder**.
2. To select files from your Travelair N, tap **AiDrive > HDD > Share**.
3. Tap any of these folders to select files for sharing: **Documents, Music, Pictures, and Videos**.
4. From your list of files, tap to select the file.
5. Tap  to share your file via **Facebook, Photos, or Email**.

NOTE: When you select **Photos** as the share option for your file, the file is saved to the Gallery on your mobile device.




Swipe to the left or to the right to go the previous or next photo.

Tap to share the file

Sharing files from your mobile device to Facebook or email

To share files from your mobile device to Facebook or email:

1. On the AiDrive home screen, tap **File/Folder**.
2. To select files from your mobile device, tap **AiDrive > Local**.
3. Tap **SD Card** to select a file from the internal storage space of your mobile device. Tap **MicroSD card** to select a file from your external storage card.
4. Browse and locate the file that you want to share.
5. Tap  to share your file via **Facebook, Photos, or Email**.

NOTE: When you select **Photos** as the share option for your file, the file is saved to the Gallery on your mobile device.



Swipe to the left or to the right to go the previous or next photo.

Tap to share the file

Safety information

In order to maintain compliance with the FCC RF exposure guidelines, this equipment should be installed and operated with a minimum distance [20cm] between the radiator and your body. Use only with supplied antenna. Unauthorized antenna, modification, or attachments could damage the transmitter and may violate FCC regulations.

CAUTION! Any changes or modifications not expressly approved in this manual could void your authorization to use this device.

Federal Communications Commission Statement

This device complies with Part 15 of the Federal Communications Commission (FCC) Rules. Operation is subject to the following two conditions:

- (1) This device may not cause harmful interference.
- (2) This device must accept any interference received, including interference that may cause undesired operation.

This equipment has been tested and found to comply with the limits for a Class B digital device, pursuant to Part 15 of the FCC Rules.

These limits are designed to provide reasonable protection against harmful interference in a residential installation.

This equipment generates, uses and can radiate radio frequency energy and, if not installed and used in accordance with the instructions, may cause harmful interference to radio communications.

Users must not modify this device. Modifications by anyone other than the party responsible for compliance with the rules of the Federal Communications Commission (FCC) may void the authority granted under FCC regulations to operate this device.

However, there is no guarantee that interference will not occur in a particular installation.

If this equipment does cause harmful interference to radio or television reception, which can be determined by turning the equipment off and on, the user is encouraged to try to correct the interference by one or more of the following measures:

- Reorient or relocate the receiving antenna.
- Increase the separation between the equipment and receiver.
- Connect the equipment into an outlet on a circuit different from that to which the receiver is connected.
- Consult the dealer or an experienced radio/TV technician for help.

CAUTION! Any changes or modifications not expressly approved by the party responsible for this device could void your authority to operate the equipment.

This device complies with Part 15 of the FCC Rules. Operation is subject to the following two conditions:

- (1) this device may not cause harmful interference, and
- (2) this device must accept any interference received, including interference that may cause undesired operation.

RF Exposure Warning

This equipment must be installed and operated in accordance with provided instructions and must not be co-located or operating in conjunction with any other antenna or transmitter. End-users and installers must be providing with antenna installation instructions and transmitter operating conditions for satisfying RF exposure compliance.

To ensure that RF exposure levels remain at or below the tested levels, use a belt-clip, holster, or similar accessory that maintains a minimum separation distance of 5mm between your body and the device.

SAR Value: 0.72 W/kg

Rechargeable Battery Recycling Service in North America



For US and Canada customers, you can call 1-800-822-8837 (toll-free) for recycling information of your ASUS products' rechargeable batteries.



Regional notice for California

WARNING : This product may contain chemicals known to the State of California to cause cancer, and birth defects or other reproductive harm. Wash hands after handling.

Proper disposal



Do not throw your Notebook PC in municipal waste. This product has been designed to enable proper reuse of parts and recycling. The symbol of the crossed out wheeled bin indicates that the product (electrical, electronic equipment and mercury-containing button cell battery) should not be placed in municipal waste. Check local regulations for disposal of electronic products.



Do not throw the battery in municipal waste. The symbol of the crossed out wheeled bin indicates that the battery should not be placed in municipal waste.