

PRECISE BIOMETRICS

Quick Reference

Precise 100 Client for
Windows NT/2000

© Precise Biometrics AB, 2000
info@precisebiometrics.com
www.precisebiometrics.com

Telephone
Sweden: +46-46-311 100
United States: +1-703-848 9266

All rights reserved. Second Edition September 2000
P/N: AM010013 R2A



Precise 100 A

Precise 100 SC

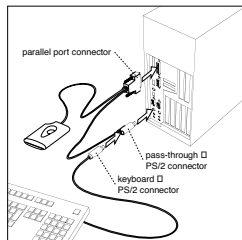
For more information on the Precise 100 system,
please refer to the User's Manual located on the software CD.

Installation

Connect the fingerprint reader

If you have a Precise 100 Reader with USB connector, skip this section and go to the next page "Log on as an administrator". If you have a Precise 100 Reader with parallel port connector, follow the instructions below.

1. Make sure that the computer has been turned off.
2. Connect the fingerprint reader to the computer as shown below.



NOTE: The parallel port **must** be set to ECP mode, otherwise the fingerprint reader will not function properly. Please refer to the computer manual for additional information, or follow the instructions below.

To set the parallel port:

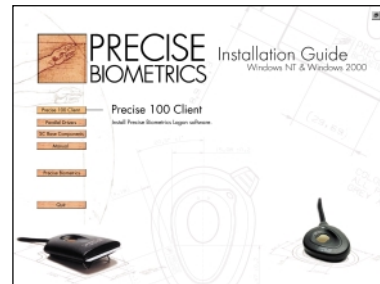
1. Access the system setup utility on your computer. On most computers this is done by pressing the F1, F10, Delete or Esc key during system booting, i.e. immediately after switching on the computer.
2. Find the parallel port mode and set it for ECP. If the ECP selection is unavailable, the parallel port is probably already set for ECP.
3. Save your changes and exit the system setup utility.

Log on as an administrator

You must have administrator rights on your local computer to install the Precise 100 Client software.

Install software

Insert the Precise 100 Client software CD. The Master Setup screen will appear.



NOTE: If the CD does not start automatically, start the CD from the desktop by double-clicking **My Computer > CD > MasterSetup.exe** icon.

1. If you have a Precise 100 Reader with USB connector, please connect it to your PC now. Windows 2000 will detect the new hardware and install the necessary drivers from the CD. If you have a Precise 100 Reader with parallel port connector, click the **Parallel Driver** button to install the necessary parallel port drivers.
2. If you are using Windows NT you must install the Microsoft Smartcard Base Components, if not previously installed. **If you are using Windows 2000 do not install the Smartcard Base Components, the system may crash.**

To install the Smart Card Base Components

- a) Click the **SC Base Components** button, a submenu appears.
- b) Click the **Base Components** button in the submenu.
- c) Click the **Update** button in the submenu and follow the instructions

3. To install the Precise 100 Client software, click the **Precise 100 Client** button and follow the instructions.

4. Restart the computer.

Enrolling a User

NOTE: To be able to log into a domain server account, the user has to be enrolled on the **domain server**. If the user is enrolled on a *local* computer, he or she can only log into that computer using a fingerprint.

1. Log on as an administrator.
2. Click **Start > Programs > Precise Biometrics > BioManager**.
The BioManager screen will appear.

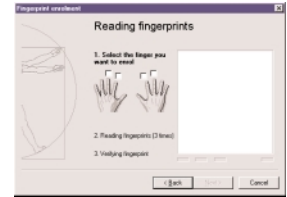


3. Click **User > New User**. The User Information screen of the Fingerprint Enrolment wizard will appear.



4. Enter the desired information in the **Username**, **Full Name** and **Description** field. If you have a Precise 100 SC Reader, you can choose to store the data on the smart card. Click **Next**. The Reading Fingerprints screen will appear.

5. Select the fingerprint to be registered by clicking in one of the checkboxes.
6. Follow the instructions on the screen. To ensure a good image, make sure the centre of the finger pad is placed in the sensor centre. The fingerprint is read four times, for the system to select and verify a good print.



7. Register another fingerprint, or click **Next**. The Logon Information screen will appear.
8. Select primary logon finger. The primary logon finger is the default finger that will be used to log into the system.

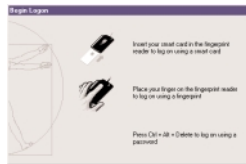


NOTE: If a current password user is enrolled, the current password is no longer valid. A new password **must** be typed, in order for the user to log on with a password.

9. Click **Next**. The saving screen will appear.
10. Click **Finish** to store the data.

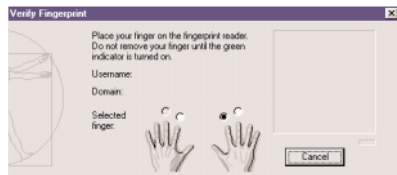
Logging on Using a Fingerprint

1. If you have a Precise 100 SC Reader, insert your smart card into the reader and place your finger on the reader. If you have a Precise 100 A Reader, simply place your finger on the reader. You can also press the **Enter** key and then enter your Username.



2. Place your primary logon finger on the fingerprint reader sensor. The Verify Fingerprint screen will appear.

3. Keep your finger placed on the sensor as long as the yellow light is flashing. The system verifies your fingerprint and access rights for the selected domain.



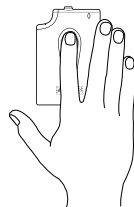
If verification fails, make sure:

- your username and domain are correct
- you place the selected finger on the centre of the sensor

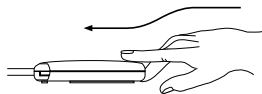
Correct Finger Placement

Most of the information in a fingerprint is located in the **middle** of the finger pad. Therefore, it is important that the middle of the finger pad is placed in the sensor centre at enrolment and logon.

- Do not “roll” your finger pad. Just press it flat to the sensor.
- Place the *centre* of your finger pad in the sensor centre.
- Use medium pressure and avoid rotating your finger.



Perfectly placed finger.



Good image: fingerprint in the middle, medium pressure to the sensor.



To get more experience in logging on with your fingerprint, refer to the Precise Demo. Access the Precise Demo by clicking **Start > Programs > Precise Biometrics > Demo**.