

BenQ

P610 Portable

Wireless Mouse for Laptops

User's Guide



English

Important Health Information

Certain repetitive strain injuries, including pain, numbness and weakness to hands, wrists, arms, neck and/or back have been identified by some experts as being associated with the prolonged use of the mouse. If you are experiencing injury symptoms, consult a medical professional. A person's susceptibility to these injuries may be affected by many factors, including body posture, repetitive physical activities and general physical health. For more information, please visit <http://www.BenQ.com/products/comfort>.

Mouse

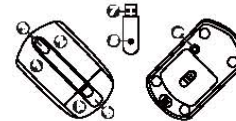
1. Left mouse button
2. Right mouse button
3. Scroll wheel
4. Battery cover
5. Receiver cover & Receiver storage compartment
6. Connect button

Receiver

7. USB connector
8. Connect button

System Requirements

- IBM® Compatible System
- Microsoft Windows® 2000, Me, XP, Vista or Mac®
- An Available USB Port



Installation Instructions

Battery Installation

- Step 1. Pull the "Battery Cover Release Button" located on the bottom of the mouse to remove the battery cover.
- Step 2. Insert new batteries, making sure to properly orient the positive (+) and negative (-) ends as specified by the battery compartment labels.
- Step 3. Slide and lock the battery cover back into place.

NOTE:

- Please insert the batteries correctly as the pictures. Don't insert the batteries upside down.

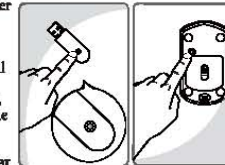


Operating Instructions

- Step 1. To ensure correct operation, please make sure that the receiver is installed at least 20cm (8 inches) away from electronic devices (such as monitors or speakers).
- Step 2. Plug the receiver unit into a USB port on your system. The system will automatically detect the new hardware and install the device.
- Step 3. To activate, first press the CONNECT button on the receiver, and then the CONNECT button located on the bottom of the mouse within 10 seconds of each other.

NOTE:

- The receiver/mouse may not function properly if placed on or near a metal surface.
- If the mouse does not activate, please Repeat Step 3.
- It is necessary to repeat Step 3 after any loss of power from battery replacement.



Power-Saving Modes

1. The mouse can be powered OFF by storing the receiver in the receiver storage compartment of the mouse.
2. If not manually powered OFF, the mouse will go into automatic sleep mode when not used for 5 minutes.

Receiver Storage

1. Open Receiver Cover and insert the receiver from the rear of the mouse.
2. To EJECT the receiver, push rubber receiver cover lightly and pull backward together with the receiver.



Trouble Shooting

If you experience problems setting up your P610, please check the following:

1. Check that the batteries are loaded correctly.
2. Check that the receiver is connected to the USB port correctly.
3. Please make sure the wireless mouse & receiver are connected properly and activated as described in Step 3 of the Operating Instructions.
4. Please try to avoid operating the optical mouse on metallic or glass surfaces as the optical sensor may not function correctly.
5. Please ensure that the battery cover is properly secured.

Warranty Information

- One year parts/labor from the date of purchase.
- Please refer to the Warranty Terms and Conditions for your local region for further warranty details.
- For more information, please visit: www.BenQ.com

English

Disposal of Waste Electrical and Electronic Equipment by users in private households in the European Union.

This symbol on the product or on the packaging indicates that this can not be disposed of as household waste. You must dispose of your waste equipment by handing it over to the applicable take-back scheme for the recycling of electrical and electronic equipment. For more information about recycling of this equipment, please contact your city office, the shop where you purchased the equipment or your household waste disposal service. The recycling of materials will help to conserve natural resources and ensure that it is recycled in a manner that protects human health and environment.



FCC Statement

This equipment has been tested and found to comply with the limits for a Class B digital device, pursuant to part 15 of the FCC Rules. These limits are designed to provide reasonable protection against harmful interference in a residential installation. This equipment generates uses and can radiate radio frequency energy and, if not installed and used in accordance with the instructions, may cause harmful interference to radio communications. However, there is no guarantee that interference will not occur in a particular installation. If this equipment does cause harmful interference to radio or television reception, which can be determined by turning the equipment off and on, the user is encouraged to try to correct the interference by on or more of the following measures:

- Reorient or relocate the receiving antenna.
- Increase the separation between the equipment and receiver.
- Connect the equipment into an outlet on a circuit different from that to which the receiver is connected.
- Consult the dealer or an experienced radio/TV technician for help.

This device complies with Part 15 of the FCC Rules.

Operation is subject to the following two conditions:

- (1) This device may not cause harmful interference and (2) this device must accept any interference received, including interference that may cause undesired operation.

Caution:

Any changes or modifications not expressly approved by the party responsible for compliance could void the user's authority to operate this equipment. Shielded interface cable, if any, must be used in order to comply with emission limits.

Hereby Darfon Electronics Corp. declares that this model of P610 in compliance with the essential requirements and other relevant essential requirements and other relevant provisions of Directive 1999/5/EC. The Declaration of Conformity may be consulted at <http://www.benq-eu.com/serviceandsupport/>

