



Thank you for choosing this 2.4G Wireless Keyboard and Mouse Kits. It operates with digital radio technology to ensure no hinder communication between the keyboard, the mouse and your computer without connecting cable.

The transmission and receiving of keyboard and mouse are free from angle restriction.

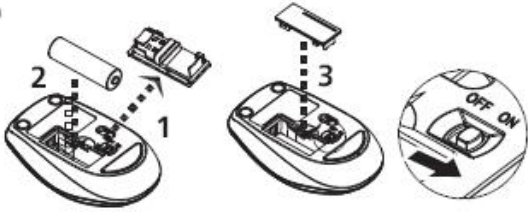
Preparing Keyboard, Mouse and Dongle

Before working with your new keyboard and mouse, look at the "**Hardware Installation**", and take a few one-time preparations.

Hardware Installation

- Place the dongle at least 20 cm from other electrical devices (e.g. monitor) to achieve optimum performance.
- The distance between the keyboard, mouse and dongle should not exceed 10 M.
- Do not place the dongle on metal surfaces.
- Do not move optical mouse on following surface
 - Glass or any transparent materials
 - Dark surface
 - Mirror or reflecting surface
 - Mouse pad with too many colors
 - Rough surface.

Step 1: Connect the Dongle

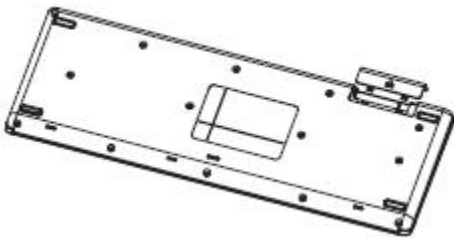


- Plug the dongle connector into an USB port.
- SYSTEM will take around 10 sec to find your keyboard and mouse automatically.

Step 2: Inserting battery in mouse

- The mouse requires one alkaline AA battery.
- Remove the battery compartment cover on the bottom of the mouse
- First push the battery puller in then insert one AA battery into battery compartment.
- Close the battery compartment cover.

Step 3: Inserting batteries in keyboard



- The keyboard requires two alkaline batteries (AAA).
- Insert two AAA batteries.
- Close the battery compartment cover.

CAUTION: Risk of explosion if battery is replaced by an incorrect type. Dispose of used batteries according to instructions.

Refer to "Important Battery Information" for disposal instructions.

Working with keyboard and mouse

The following sections contain information on using the keyboard and the mouse.

Mouse

In addition to two buttons, the mouse also has a wheel that can be used as follows:

- As a 3rd button: press on the wheel.
- For scrolling, e.g. in documents or on Internet pages: turn the wheel forward or back.

Keyboard

The following description of keys applies for the operating systems that support these functions (e.g. Windows 2000/XP/Vista/Windows 7).



Vista Key

Press Vista key to open Start Menu



Application key

Press Application key is same as Right Mouse key to open function Menu



Previous Track

Combine keys to skip to the forward title in the active player.



Play/Pause

Combine keys to Start or Pause the soundtrack in active player.



Stop

Combine keys to end the soundtrack or video.



Next Track

Combine keys to skip to the next title in the active player.



My Computer

Open My Computer folder.



Mute

Press this key to On/Off the volume.



Volume down

Press this key to decreasing the volume.



Volume Up

Press this key to increasing the volume.



Sleep

Enters sleep mode



IE7 QuickTab

Opens the Internet Explorer 7 QuickTab feature



E mail

Opens E mail



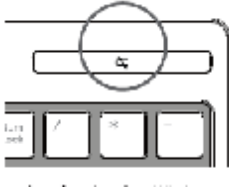
Internet Explorer

Opens Internet Explorer

Low Battery Instruction

a. Keyboard battery indicator

The battery indicator on the screen shows you the status of the batteries. If the battery indicator lights up when a key is pressed, the batteries are gradually becoming weaker. Replace them in the near time



b. Mouse battery indicator

The battery indicator on the screen shows you the status of the batteries. If the battery indicator lights up when you are using the mouse, the batteries are gradually becoming weaker. Replace them in the near time.

Troubleshooting and tips

The keyboard or mouse does not operate following installation or is not recognized.

- Make sure that the batteries have been inserted correctly according to the polarity and the dongle is well connected.
- Check that your USB port is configured properly.
- Make the connection between the dongle, keyboard and mouse. Follow “Hardware Installation”/“Step 3”/Connection.
- Make sure the batteries are not too weak.
- Remove the batteries from the device. Please press any button on the device several times to prevent any unexpected failure after batteries being put in.
- Change the location of the dongle to have a best sensitivity.
- To determine whether the keyboard, mouse or computer causes the problem test the keyboard and mouse on another computer if possible; or test another keyboard and mouse on your current computer.

If you are still unable to solve the problem, please contact your point of sale or your dealer.

If you need to exchange the keyboard, please note that you must return it to your dealer in its original packaging and also a produce proof of purchase (receipt). Keep your receipt in a safe place after purchase.

Federal Communication Commission Interference Statement

This equipment has been tested and found to comply with the limits for a Class B digital device, pursuant to Part 15 of the FCC Rules. These limits are designed to provide reasonable protection against harmful interference in a residential installation. This equipment generates, uses and can radiate radio frequency energy and, if not installed and used in accordance with the instructions, may cause harmful interference to radio communications. However, there is no guarantee that interference will not occur in a particular installation. If this equipment does cause harmful interference to radio or television reception, which can be determined by turning the equipment off and on, the user is encouraged to try to correct the interference by one of the following measures:

- Reorient or relocate the receiving antenna.
- Increase the separation between the equipment and receiver.
- Connect the equipment into an outlet on a circuit different from that to which the receiver is connected.
- Consult the dealer or an experienced radio/TV technician for help.

This device complies with Part 15 of the FCC Rules. Operation is subject to the following two conditions: (1) This device may not cause harmful interference, and (2) this device must accept any interference received, including interference that may cause undesired operation.

FCC Caution: Any changes or modifications not expressly approved by the party responsible for compliance could void the user's authority to operate this equipment.

IMPORTANT NOTE:

FCC Radiation Exposure Statement:

This equipment complies with FCC radiation exposure limits set forth for an uncontrolled environment. End users must follow the specific operating instructions for satisfying RF exposure compliance.

This transmitter must not be co-located or operating in conjunction with any other antenna or transmitter.

IC Statement

Operation is subject to the following two conditions: 1) this device may not cause interference and 2) this device must accept any interference, including interference that may cause undesired operation of the device.

低功率電波輻射性電機管理辦法:

第十二條

經型式認證合格之低功率射頻電機，非經許可，公司、商號或使用者均不得擅自變更頻率、加大功率或變更設計之特性及功能。

第十四條

低功率射頻電機之使用不得影響飛航安全及干擾合法通信；經發現有干擾現象時，應立即停用，並改善至無干擾時方得繼續使用。

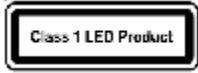
前項合法通信，指依電信法規定作業之無線電通信。

低功率射頻電機須忍受合法通信或工業、科學及醫療用電波輻射性電機設備之干擾。

INFORMATION FOR OPTICAL POINTING DEVICES ONLY:

This product has been tested to comply with international Standard IEC 60825-1:(1993), incid. Amd.2(2001).

This product uses LEDs that are inherently Class 1.



IMPORTANT BATTERY INFORMATION

- Keep batteries out of reach of children.
- Insert the batteries in the proper direction as indicated by the positive (+) and negative (-) markings in the battery compartment.
- Do not mix old and new batteries or batteries of different types (for example, carbon and alkaline batteries).
- Always remove old, weak, or worn-out batteries promptly and recycle or proper disposal of them in accordance with Local and National Disposal Regulations.
- If a battery leaks, remove all batteries and recycle or dispose of them in accordance with the battery manufacture's instructions and Local and National Disposal Regulations. Before inserting new batteries, thoroughly clean the compartment with a damp paper towel, or follow the battery manufacture's recommendations for cleanup. If fluid from the battery comes into contact with skin or clothes, flush skin with water immediately.
- Remove the batteries if your device is to be stored for an extended period of time without being used.