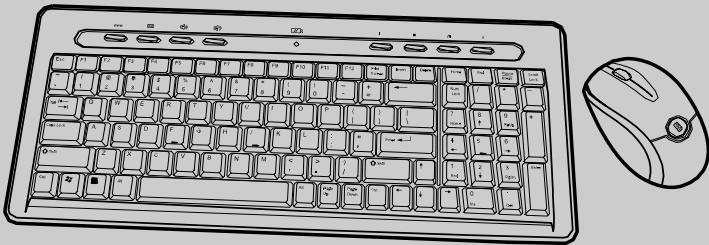


Bluetooth Keyboard Mouse Set



User Manual

About this manual

Thank you for your purchase of this Bluetooth keyboard mouse set. This topics covered in this manual are listed as following.

- ▶ **Introduction**
 - ▶ **Installing the Batteries**
 - ▶ **Setting up the Keyboard and Optical Mouse**
 - ▶ **Installing the WIDCOMM Bluetooth Stack**
 - ▶ **Using the Keyboard and Optical Mouse**
 - ▶ **Using the Bluetooth Stack**
 - ▶ **Troubleshooting**
-

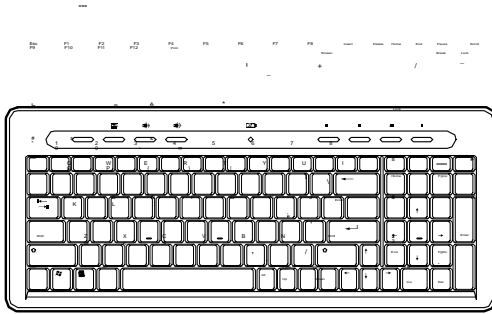
Contents

Introduction	1
Package List	1
Features	2
Installing the Batteries	3
Keyboard	3
Optical Mouse	4
Installing and Uninstalling the WIDCOMM Bluetooth Stack	5
Installing the WIDCOMM Bluetooth Stack	5
Uninstalling the WIDCOMM Bluetooth Stack	8
Setting up the Keyboard and Optical Mouse	9
Automatic Pairing in Boot Mode	9
Quick Pairing in Windows	10
Pairing on WIDCOMM Bluetooth Stack	12
Using the Keyboard and Optical Mouse	14
Using the Keyboard	14
Using the Optical Mouse	15
Power Status of the Keyboard and Optical Mouse	15
Use of the WIDCOMM Bluetooth Stack	17
Using the Stack for the First Time	17
Connecting to the other HID Devices	18
Troubleshooting	19
FCC/Industry Canada Notice	20

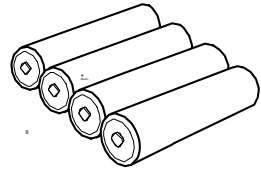
1 Introduction

1.1 Package List

Before you start using the set, check the following contents in your package. If anything is missing, contact your retailer.



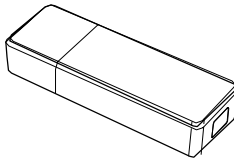
Keyboard



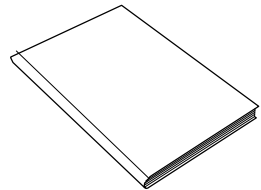
Batteries for the keyboard and mouse



Optical Mouse



USB Bluetooth dongle



User's Manual

Bluetooth Keyboard Mouse Set

1.2 Features

Keyboard Features

- 103-key design
- Power saving mode (after idling for ten minutes)
- Internet and multimedia hotkeys

Optical Mouse Features

- With scroll wheel and two buttons
- Power saving mode
- LED indicator
 - a. Red: dead battery
 - b. Flashing red and green: mouse/keyboard pairing

USB Bluetooth Dongle Features

- Bluetooth specification v1.2 and v2.0 compliant
- Supports both keyboard and mouse
- Supports additional Bluetooth devices

System Requirements

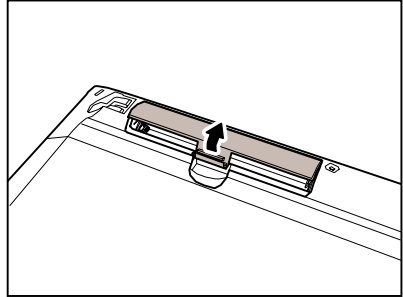
- Bluetooth / USB keyboard & mouse supported computer
- Microsoft Windows 98/ME/2000/XP or later

2 Installing the Batteries

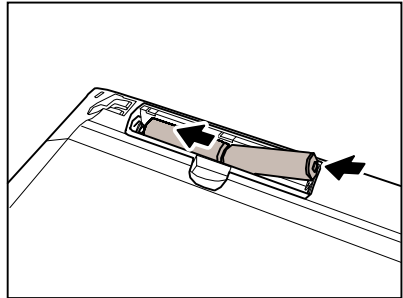
The keyboard and mouse both need two AA size batteries. Follow the steps below to install the batteries.

2.1 Keyboard

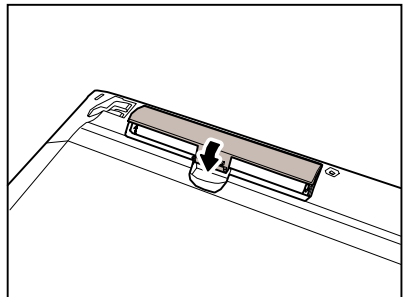
1. Remove the battery cover as shown.



2. Install two "AA" batteries while observing the polarity (+ and -) marks indicated inside the compartment.

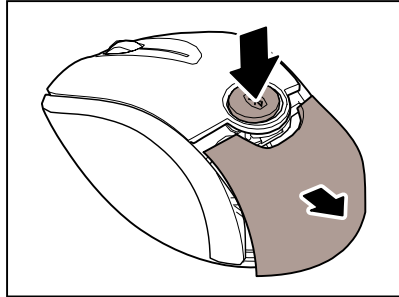


3. Replace the battery cover.

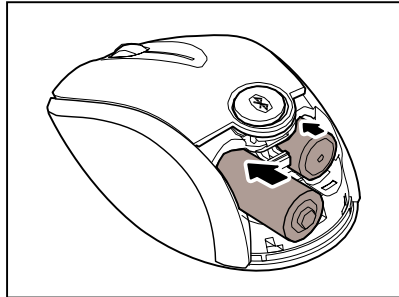


2.2 Optical Mouse

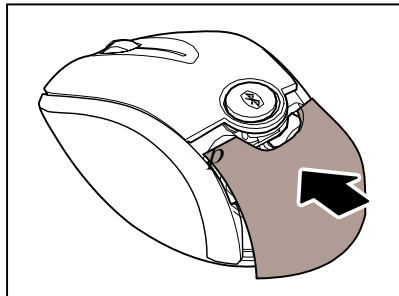
1. Press the button and the battery cover pops out.



2. Install two "AA" batteries while observing the polarity (+ and -) indicated inside the mouse.



3. Replace the battery cover.



3 Installing and Uninstalling the WIDCOMM Bluetooth Stack

3.1 Installing the WIDCOMM Bluetooth Stack

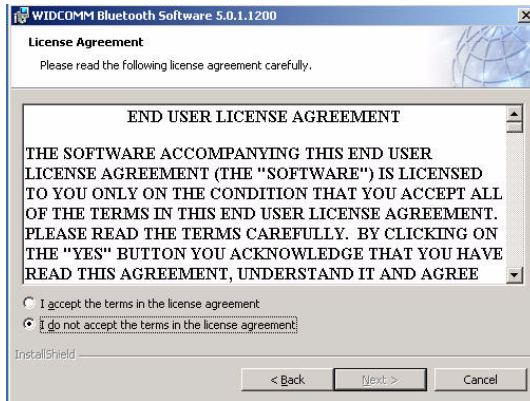
Before installing the WIDCOMM Bluetooth stack, plug the USB Bluetooth dongle into a USB port of your computer.

1. Insert the provided Installation CD in the CD ROM drive.
2. The installation stack loads automatically. If not, click the **Setup.exe** in the bin folder of the CD ROM.
3. The welcome screen introduces you to the installation process. Click **Next** to continue.

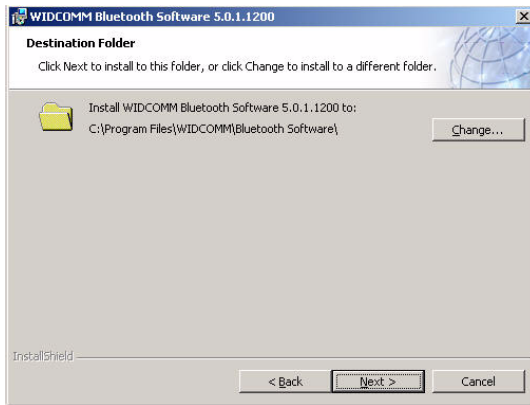


Bluetooth Keyboard Mouse Set

4. Read the agreement and select “***I accept he terms in the license agreement***”. Click **Next** to continue.

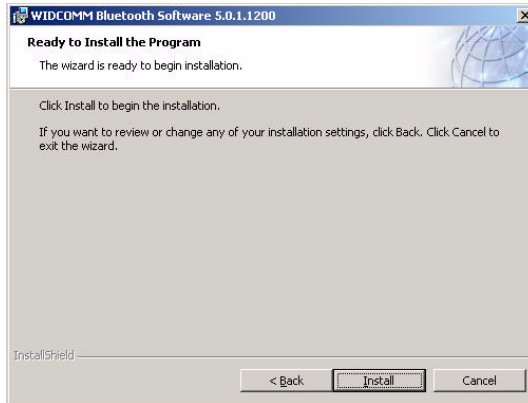


5. The program will be installed in the folder as shown. Click **Change** to install in a different location. Click **Next** to continue.



Bluetooth Keyboard Mouse Set

6. Click **Install** to start the installation. The installation may need some time to complete.



7. The following screen appears to indicate the installation is complete.



8. Remove the dongle and plug it back in, the keyboard and mouse will pair automatically. Click **Finish** to exit the installation.

Bluetooth Keyboard Mouse Set

The following prompt requires you to restart the computer so that the Bluetooth stack takes effect. Click **Yes** to restart your computer now or **No** to restart later.



3.2 Uninstalling the WIDCOMM Bluetooth Stack

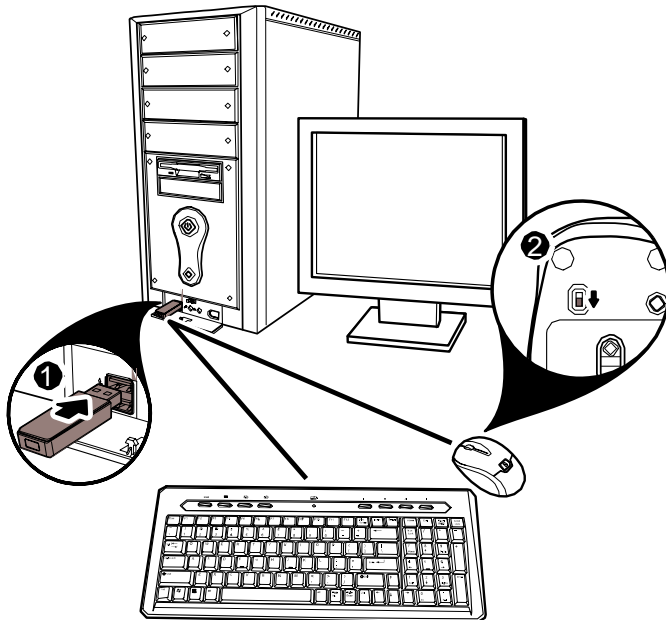
Follow the steps below to uninstall the WIDCOMM Bluetooth stack from your computer.

1. Remove the USB Bluetooth dongle.
2. Click **Start > Settings > Control Panel > Add/Remove Programs**.
3. Select **WIDCOMM Bluetooth Software** from the program list and click **Remove**.
4. The system starts to remove the program, it may take some time to uninstall.
5. When the program has been removed, a prompt requires you to restart the computer. Click **Yes** to restart your computer now or **No** to restart later.

4 Setting up the Keyboard and Optical Mouse

4.1 Automatic Pairing in Boot Mode

Follow the steps below to enable the keyboard and mouse in boot mode.



1. Plug the USB Bluetooth dongle into one of USB ports before starting your computer.
2. Power on the mouse. (The power switch is on the bottom of the mouse.)
3. The Bluetooth connection is established. Turn on the computer and use the keyboard to enter the BIOS setup.
4. Follow the on-screen instructions to enter the BIOS setup screen.
5. Use the keyboard/mouse to view the menu and configure the settings.

Bluetooth Keyboard Mouse Set

Enabling the function of USB keyboard/mouse in BIOS

If the keyboard and mouse failed to work (refer to “**7 Troubleshooting**” on page 19 for more probable conditions), check that the USB function of the keyboard/mouse has been enabled in the BIOS setup.

1. Before turning on your computer, make sure the bluetooth connection has been established.
2. Turn on your computer and follow the on-screen instructions to enter the BIOS setup.
3. Use the cursor keys on the keyboard to navigate through the menu items and enable the USB function for USB keyboard and mouse. (In some BIOS settings, you can use the Bluetooth mouse to navigate through the items.)



Some old PC systems do not support the USB keyboard/mouse in BIOS/DOS environment.

4.2 Quick Pairing in Windows

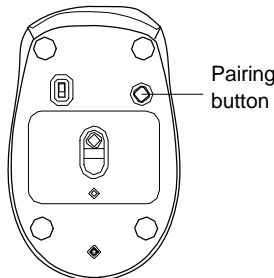
The Bluetooth keyboard and mouse has been set to a pre-pairing mode as the factory default. For quick pairing, enable the pre-pairing mode following the steps below.

1. Plug the USB Bluetooth dongle into a USB port of your computer.



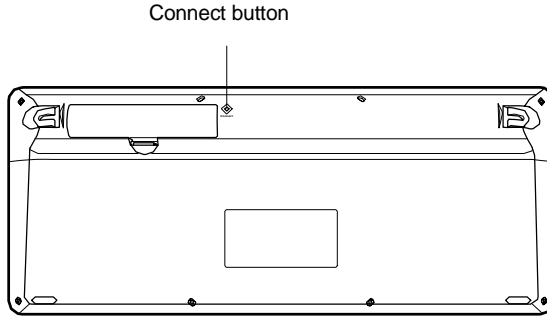
The first time you connect the keyboard or mouse to your computer, the *Found New Hardware Wizard* will automatically launch. Cancel the Wizard and follow the steps below.

2. For the mouse, press the pairing button at its bottom.

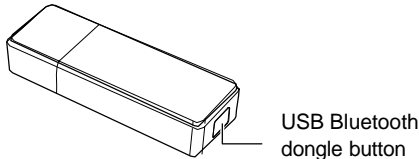


Bluetooth Keyboard Mouse Set

For the keyboard, use the tip of an unfolded paper clip (or similar object without a sharp tip), to gently press the connect button inside the hole on the back of the keyboard for two seconds.



3. Press the button on the bottom of the USB Bluetooth dongle until the LED begins to flash once every second. This indicates the Bluetooth dongle has started to search for device to be paired.



- When pairing, the mouse LED lights red and green in turn (The keyboard has no status LED).
- The pairing settings will be cancelled if you press the mouse pairing button or the keyboard connect button. To reconnect the mouse or keyboard, press the USB Bluetooth dongle button again (Refer to the step3 above).

4. Press any key on the keyboard and move your mouse to ensure they are connected.



Each time you turn on your computer, the keyboard and mouse will be automatically detected.

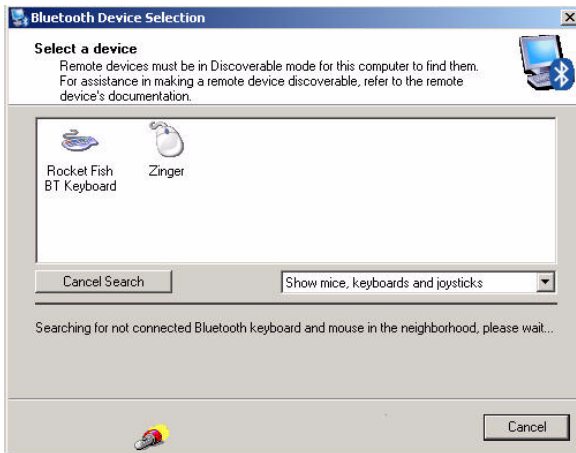
4.3 Pairing on WIDCOMM Bluetooth Stack

Before using the Bluetooth stack for keyboard and mouse pairing, install the stack as instructed in “**3 Installing and Uninstalling the WIDCOMM Bluetooth Stack**” on page 5. Then follow the steps below.



To start the Bluetooth stack for the first time, see “**6 Using the Stack for the First Time**” on page 17 for more information.

1. Press the USB Bluetooth dongle button until the following Human Interface Device (HID) screen appears.



2. When the mouse is connected, the following confirmation message appears. Click to confirm that the correct mouse is connected.

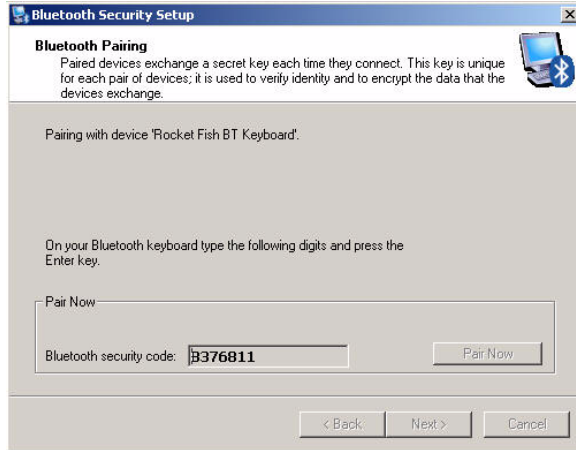


Bluetooth Keyboard Mouse Set

- When the keyboard is connected, the following screen appears. Use the paired keyboard to type the digits shown on the screen and press the Enter key. The keyboard is then connected.



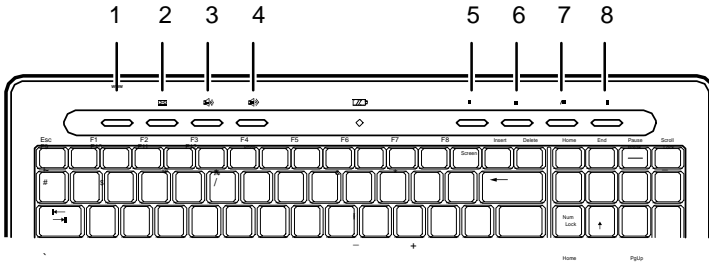
The Bluetooth security code changes each time the keyboard is connected.



5 Using the Keyboard and Optical Mouse

5.1 Using the Keyboard

The keyboard features 103 keys. Besides the standard keys, this keyboard has a row of hotkeys. The functions are described as below.



No	Icon	Function	Description
1	WWW	Internet	Opens your web browser (usually Internet Explorer™).
2	✉	E-mail	Opens your mail system (usually Outlook Express™).
3	🔊	Volume down	Decreases the volume.
4	🔊	Volume up	Increases the volume.
5	⏮	Rewind	Returns to previous media file.
6	■	Stop	Stops a media file playing.
7	▶/	Play / Pause	Plays / Pauses a media file.
8	⏭	Fast Forward	Jumps to next media file.



- Buttons 5, 6, 7, and 8 are multimedia hotkeys. These allow for easy operation when playing media files.
- The hotkeys are disabled when the keyboard is pairing automatically in both boot mode and Windows mode.
- The keyboard will enter the power saving mode after ten minutes idle time.

5.2 Using the Optical Mouse

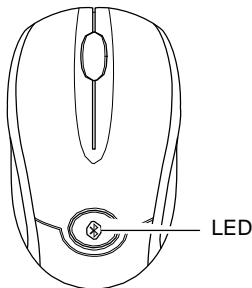
After plugging in the USB Bluetooth dongle and setting the keyboard and mouse in the Bluetooth connection environment as described in “4 Setting up the Keyboard and Optical Mouse” on page 9, you can begin using the mouse immediately.



- The scroll wheel on the mouse is disabled when the mouse is pairing automatically in both boot mode and Window mode.
- The mouse will enter power saving mode when not used for a period of the time.

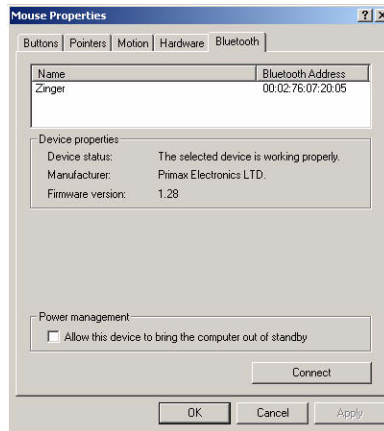
5.3 Power Status of the Keyboard and Optical Mouse

The Bluetooth mouse has a battery status LED. When the battery runs out, the LED turns red. You should change the batteries immediately.

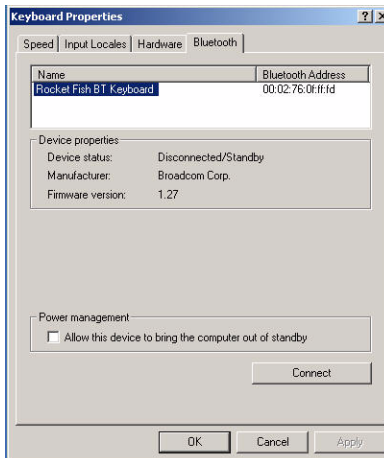


Bluetooth Keyboard Mouse Set

To view more detailed information on the mouse battery status, go to the **Control panel > Mouse > Bluetooth**.



There is no battery LED on the keyboard. To check its power status, go to the **Control panel > Keyboard > Bluetooth**.



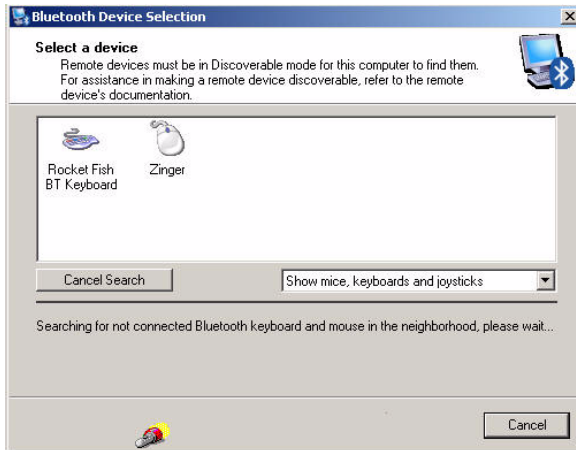
6 Use of the WIDCOMM Bluetooth Stack

6.1 Using the Stack for the First Time

To start using the Bluetooth Stack, double click the Bluetooth icon in the system tray.



1. The *Initial Bluetooth Configuration Wizard* will launch. Follow the instructions on screen to complete the configuration.
2. When the Bluetooth Configuration is complete, the following HID screen appears and starts to search for Bluetooth devices.



3. Click on the HID device you want to connect with. Then follow the instructions on-screen to enable the selected device.

Bluetooth Keyboard Mouse Set

About the Bluetooth icon

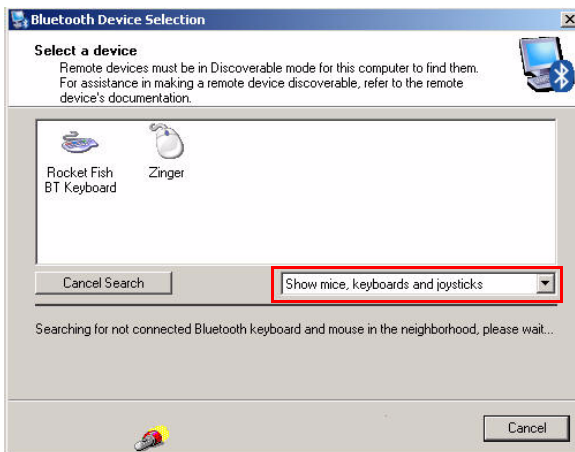
The Bluetooth icon acts as an indicator for dongle status.

1. A red icon indicates there is no dongle inserted.
2. A white icon indicates the dongle is plugged in.
3. A green icon indicates the dongle has detected the HID devices.

6.2 Connecting to the other HID Devices

Besides the mouse and keyboard, the Bluetooth Stack also allows you to connect to other Bluetooth devices.

1. Make sure the USB Bluetooth dongle has been plugged onto your computer.
2. Set the Bluetooth devices, such as printers, modems, and PDAs, you want to connect to the Bluetooth stack.
3. Press the USB Bluetooth dongle button until the following HID screen appears.
4. Select the type of devices to search for from the drop-down menu.



5. The detected devices will be displayed. Click on a device and the stack will instruct you to enable the connection.

7 Troubleshooting

If you have any problems with your Bluetooth keyboard or mouse, please check the following:

- Check the system requirements to make sure that your system is compatible.
- Check to see if the batteries in the keyboard and mouse are installed correctly. Make sure the polarity of the batteries corresponds with the polarity signs inside the keyboard and mouse battery compartments.
- When the mouse LED is lit red, it indicates battery power low. Replace them with new batteries immediately.
- Once the Bluetooth stack (see “**Installing the WIDCOMM Bluetooth Stack**” on page 5) has been installed in your computer, you can check the battery status of keyboard and mouse from **Control Panel > Keyboard > Bluetooth** or **Control Panel > Mouse > Bluetooth**.
- If the keyboard and mouse fail to work, check the USB keyboard and mouse functions in your system’s BIOS. The functions should be enabled for the normal use of keyboard and mouse. For detailed setting, refer to “**Enabling the function of USB keyboard/mouse in BIOS**” on page 10.
- If your PC system’s BIOS setup has options for the keyboard or mouse, make sure they are set to default settings. If you are not familiar with the BIOS, refer to your PC’s manual for more information.
- Only use the mouse on a clean, flat, non-slippery surface in order to ensure smooth and accurate cursor action. If you use a mouse-pad, choose a light-colored one, not a dark one, to use less battery power.

For further assistance with any other questions you may have, please contact your dealer for technical support.

8 FCC/ Industry Canada Notice

This equipment has been tested and found to comply with the limits for a Class B digital device, pursuant to Part 15 of the FCC Rules. These limits are designed to provide reasonable protection against harmful interference in a residential installation. This equipment generates, uses and can radiate radio frequency energy and, if not installed and used in accordance with the instructions, may cause harmful interference to radio communications. However, there is no guarantee that interference will not occur in a particular installation. If this equipment does cause harmful interference to radio or television reception, which can be determined by turning the equipment off and on, the user is encouraged to try to correct the interference by one of the following measures:

- Reorient or relocate the receiving antenna.
- Increase the separation between the equipment and receiver.
- Connect the equipment into an outlet on a circuit different from that to which the receiver is connected.
- Consult the dealer or an experienced radio/TV technician for help.

This device complies with Part 15 of the FCC Rules. Operation is subject to the following two conditions: (1) This device may not cause harmful interference, and (2) this device must accept any interference received, including interference that may cause undesired operation.

FCC Caution: Any changes or modifications not expressly approved by the party responsible for compliance could void the user's authority to operate this equipment.

IC RSS-210:

Operation is subject to the following two conditions: (1) this device may not cause interference, and (2) this device must accept any interference, including interference that may cause undesired operation of the device.

IMPORTANT NOTE:

FCC/ IC Radiation Exposure Statement:

This equipment complies with FCC / IC RSS-210 radiation exposure limits set forth for an uncontrolled environment. End users must follow the specific operating instructions for satisfying RF exposure compliance.

This transmitter must not be co-located or operating in conjunction with any other antenna or transmitter.
