

Package contents

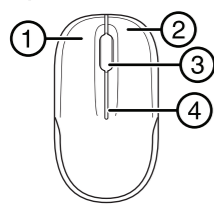
- Optical mouse
- Keyboard
- AA battery for the mouse (1)
- AAA batteries for the keyboard (2)
- *Quick Setup Guide*

System requirements

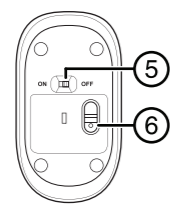
- Windows® 7, Windows Vista®, Windows® XP, or Mac OS® X 10.4 or later
- One available USB port

Mouse features

Top view



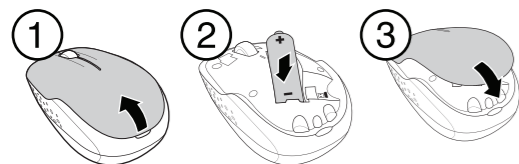
Bottom view



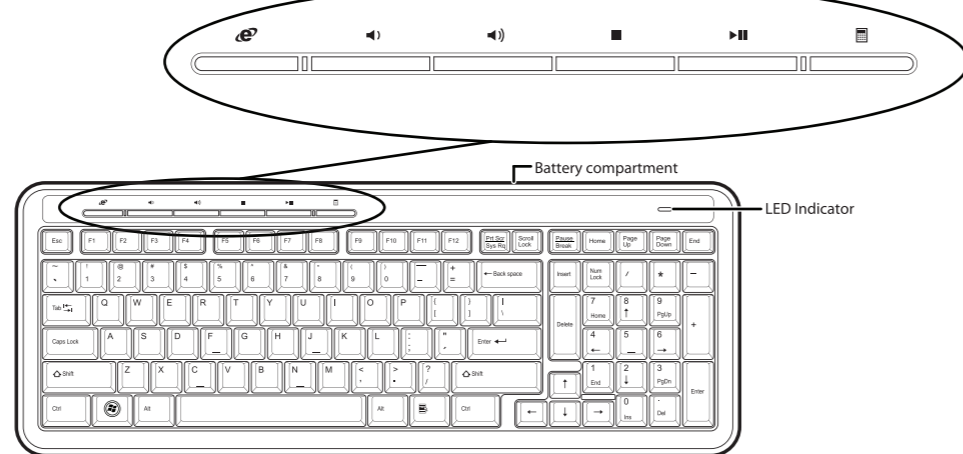
#	Component	#	Component
1	Left button	4	Battery indicator LED
2	Right button	5	Power switch
3	Scroll wheel	6	Optical sensor

Setting up your mouse

- 1 Open the battery compartment cover by lifting it up.
- 2 Insert the AA battery, making sure that the + and - on the battery match the + and - in the battery compartment.
- 3 Close the battery compartment cover.



Keyboard features

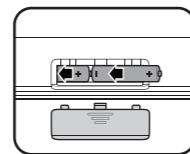


Hot keys

Icon	Function	Component
	Browser	Press to start your default Web browser. If your Web browser is already open, takes the currently open tab to the home page.
	Volume down	Press to decrease the volume. Hold down to decrease the volume quickly.
	Volume up	Press to increase the volume. Hold down to increase the volume quickly.
	Stop	Press to stop playing music or video.
	Play/Pause	Press to play or pause music or video. Press again to resume.
	Calculator	Press to open the calculator.

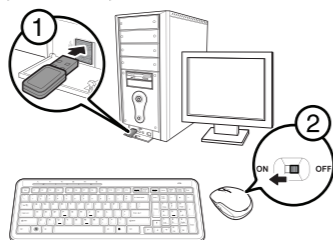
Setting up your keyboard

- 1 Open the battery compartment cover.
- 2 Insert the two AAA batteries, making sure that the + and - on the batteries match the + and - in the battery compartment.
- 3 Close the battery compartment cover.



Pairing the keyboard and mouse

- 1 Plug the dongle into an available USB port on your computer.
- 2 Switch the power button of the mouse to the **ON** position. Your computer automatically detects the keyboard and the mouse.



Guide d'installation rapide | Ensemble clavier/souris sans fil DX-WLCMBO2 / Guía de instalación rápida | Combo de teclado y ratón inalámbrico DX-WLCMBO2

- Replace the battery.

FCC statement

This device complies with Part 15 of the FCC Rules.

Operation is subject to the following two conditions:

- (1) this device may not cause harmful interference, and
- (2) this device must accept any interference received, including interference that may cause undesired operation.

You are cautioned that changes or modifications not expressly approved by the party responsible for compliance could void the user's authority to operate the equipment.

NOTE: This equipment has been tested and found to comply with the limits for a Class B digital device, pursuant to part 15 of the FCC Rules. These limits are designed to provide reasonable protection against harmful interference in a residential installation. This equipment generates, uses and can radiate radio frequency energy and, if not installed and used in accordance with the instructions, may cause harmful interference to radio communications. However, there is no guarantee that interference will not occur in a particular installation. If this equipment does cause harmful interference to radio or television reception, which can be determined by turning the equipment off and on, the user is encouraged to try to correct the interference by one or more of the following measures:

- Reorient or relocate the receiving antenna.
- Increase the separation between the equipment and receiver.
- Connect the equipment into an outlet on a circuit different from that to which the receiver is connected.
- Consult the dealer or an experienced radio/TV technician for help.

IC-RSS210 statement

This device complies with Industry Canada licence exempt RSS standard(s). Operation is subject to the following two conditions: (1) this device may not cause interference, and (2) this device must accept any interference, including interference that may cause undesired operation of the device.

Le présent appareil est conforme aux CNR d'Industrie Canada applicables aux appareils radio exempts de licence. L'exploitation est autorisée aux deux conditions suivantes : (1) l'appareil ne doit pas produire de brouillage, et (2) l'utilisateur de l'appareil doit accepter tout brouillage radioélectrique subi, même si le brouillage est susceptible d'en compromettre le fonctionnement.

ICES-003 statement

This Class B digital apparatus complies with Canadian ICES-003; Cet appareil numérique de la classe B est conforme à la norme NMB-003 du Canada.

Caution

Risk of explosion if battery is replaced by an incorrect type. Dispose of used batteries according to the instructions.

One-year limited warranty

For complete warranty, visit www.dynexproducts.com.

Contact Dynex:

For customer service call 1-800-305-2204

www.dynexproducts.com

© 2011 BBY Solutions, Inc. All Rights Reserved.

DYNEX is a trademark of BBY Solutions, Inc. Registered in some countries. All other products and brand names are trademarks of their respective owners.

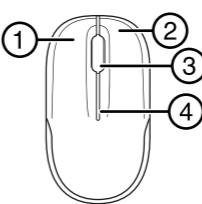
Quick Setup Guide | DX-WLCMBO2 Wireless Keyboard/Mouse Combo

Contenu de l'emballage

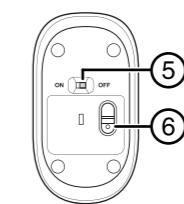
- Souris optique
- Clavier
- Guide d'installation rapide
- Pile AA pour la souris (1)
- Piles AAA pour le clavier (2)

Caractéristiques de la souris

Vue supérieure

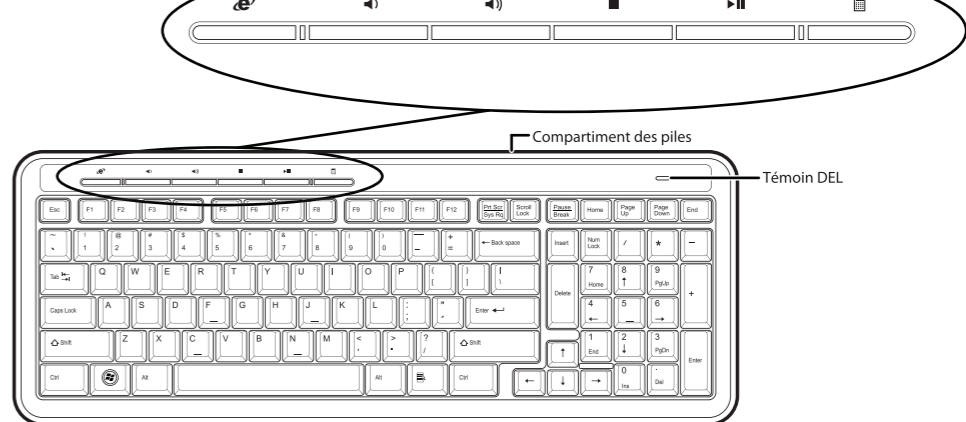


Vue de dessous



N°	Composants	N°	Composants
1	Bouton gauche	4	Témoin DEL de la pile
2	Bouton droit	5	Interrupteur d'alimentation
3	Molette de défilement	6	Capteur optique

Fonctionnalités du clavier



Touches de raccourci

Icône	Fonction	Composants
	Navigateur	Permet de démarrer le navigateur Web par défaut. Si le navigateur Web est déjà ouvert, l'onglet déjà ouvert est redirigé vers la page d'accueil.
	Volume –	Permet de diminuer le volume. Appuyer et maintenir cette touche enfoncée pour diminuer le volume plus rapidement.
	Volume +	Permet d'augmenter le volume. Appuyer et maintenir cette touche enfoncée pour augmenter le volume plus rapidement.
	Arrêt	Permet d'arrêter la lecture de musique ou d'une vidéo.
	Lecture/Pause	Permet la lecture ou l'arrêt momentané de musique ou d'une vidéo. Appuyer de nouveau sur la touche pour reprendre la lecture.
	Calculatrice	Permet d'ouvrir la calculatrice.

Configuration système requise

- Windows^{MD} 7, Windows Vista^{MD}, Windows^{MD} XP et Mac OS^{MD} X 10.4 ou supérieur
- Un port USB disponible

Configuration de la souris

- 1 Ouvrir le couvercle du compartiment des piles en le soulevant.
- 2 Insérer la pile AA, en vérifiant que les pôles + et - de la pile coïncident avec les repères + et - figurant à l'intérieur du compartiment.
- 3 Replacer le couvercle du compartiment des piles.

