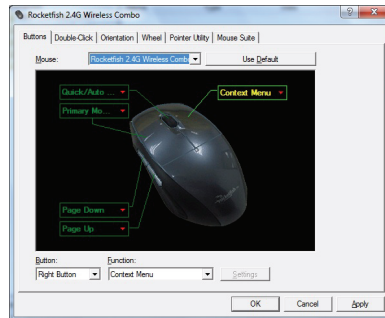




Configuring mouse buttons



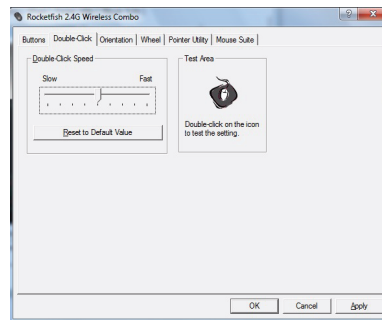
To configure the buttons:

- 1 Click the **Button** list arrow to open the list of buttons, then click the button you want to configure.
- 2 Click the **Function** list arrow to open the list of functions, then click the function you want to assign to the button.
- 3 To restore default button functions, click **Use Default**. The default settings for the mouse buttons are:

Button	Function
Left button	Primary mouse button
Right button	Context menu
Wheel button	Quick/Auto scroll
Button A	Forward
Button B	Back

- 4 Click other tabs to make more adjustments, or click **OK** to save your selections and close the program.

Adjusting the double-click speed

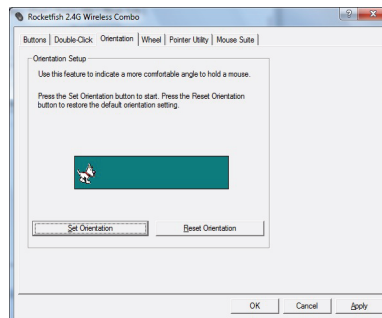


To adjust the double-click speed:

- 1 To adjust double-click speed, drag the slider.
- 2 To test the click speed, double-click the **Test Area** icon.
- 3 To restore to default settings, click **Reset to Default Value**.
- 4 Click other tabs to make more adjustments, or click **OK** to save your selections and close the program.

Adjusting the orientation

Use this tab to adjust the angle at which you use the mouse.



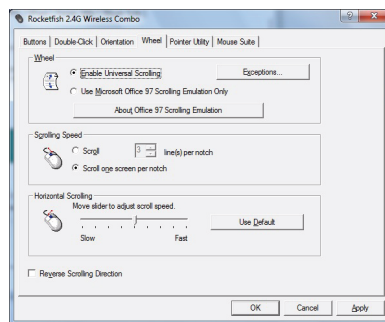
To adjust the orientation:

- 1 Click **Set Orientation** to activate orientation setup, then use the on-screen pointer to follow the dog as it moves around.



- 2 To restore the default orientation settings, click **Reset Orientation**.
- 3 Click other tabs to make more adjustments, or click **OK** to save your selections and close the program.

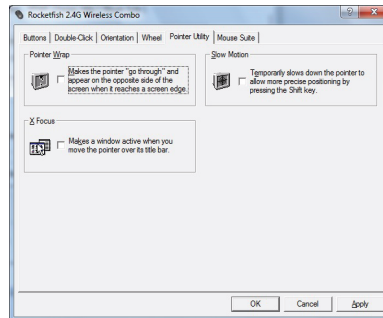
Adjusting the wheel settings



To adjust the wheel settings:

- 1 To select the wheel scrolling method, click:
 - **Enable Universal Scrolling**—Uses common scrolling functions.
 - **Use Microsoft Office 97 Scrolling Emulation Only**—Uses Microsoft Office 97 scrolling emulation.
- 2 To specify scrolling exceptions, click **Exceptions**.
- 3 To adjust vertical scrolling speed, click:
 - **Scroll X line(s) per notch**—Selects the number of lines to scroll when the scroll wheel is moved one notch. Click the up or down arrow keys to specify the number of lines.
 - **Scroll one screen per notch**—Scrolls an entire screen when the scroll wheel is moved one notch.
- 4 To adjust the horizontal scrolling speed, drag the slider.
- 5 To restore to default scrolling speed, click **Use Default**.
- 6 To reverse scrolling direction, click **Reverse Scrolling Direction**.
- 7 Click other tabs to make more adjustments, or click **OK** to save your selections and close the program.

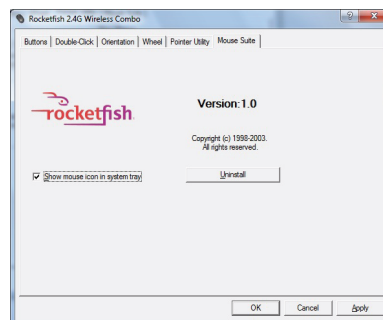
Adjusting pointer behavior



To adjust pointer behavior:

- 1 Click the pointer options. You can select:
 - **Pointer Wrap**—The pointer goes to the opposite side of the screen when it reaches the screen edge.
 - **X Focus**—Activates a window when the pointer moves over the title bar.
 - **Slow Motion**—Slows down the pointer when the **Shift** key is pressed for a more precise positioning.
- 2 Click other tabs to make more adjustments, or click **OK** to save your selections and close the program.

Hiding the system tray's mouse icon





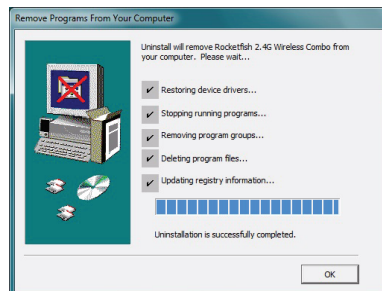
To hide the system tray's mouse icon:

- Uncheck **Show mouse icon in systray**, then click **OK** to save changes and close application.

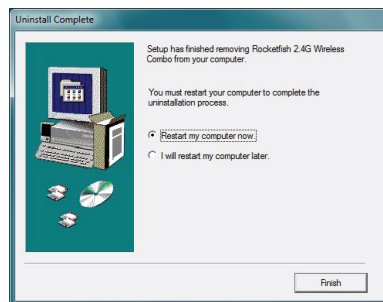
Uninstalling the combo driver

To uninstall the combo driver:

- 1 Click **Start**, **All Programs**, **Rocketfish 2.4G Wireless Combo**, then click **Uninstall Rocketfish 2.4G Wireless Combo Driver**. A message asks if you are sure you want to uninstall the driver.
- 2 Click **Yes** to continue. The *Remove Programs From Your Computer* screen opens and displays the progress.



- 3 When the uninstallation is complete, click **OK** to continue. The *Uninstall Complete* screen opens.



- 4 Click **Finish**. Your computer restarts and the uninstallation is complete.

Maintaining

To clean your Bluetooth keyboard and mouse, wipe them with a soft, lint-free cloth slightly moistened with water.

Troubleshooting

If you have any problems with your 2.4 GHz keyboard or mouse, check the following:

- Make sure that your computer meets the system requirements.
- Make sure that the batteries in the keyboard and mouse are installed correctly. Make sure that the + and – symbols on the batteries align with the + and – symbols inside the keyboard and mouse battery compartments.
- When the mouse LED is red, battery power is low. Replace the batteries immediately.
- If your computer's BIOS setup has options for the keyboard or mouse, make sure that they are set to default settings. If you are not familiar with the BIOS, see your the documentation that came with your computer.
- Only use the mouse on a clean, flat surface in order to ensure smooth and accurate cursor movement. If you use a mousepad, choose a light-colored one, not a dark one, to use less battery power. Also, do not use the mouse on a reflective surface such as metal, glass, or polished wood.
- For further assistance with any other questions you may have, Rocketfish at 1-800-620-2790 for technical support.

Specifications

	Mouse	Keyboard
Dimensions H × L × W	Mouse: 1.7 × 4.9 × 2.88 inches (43.28 x 124.57 x 73.2 mm) Dongle: 0.752 × 0.539 × 0.177 inches (19.1 x 13.7 x 4.5 mm)	1.14 × 19.8 × 8.35 inches (29 x 503 x 212 mm)
Resolution	1200 DPI @ 10 inch/sec	n/a
Tracking speed	Maximum 30 inch/sec (76.2 cm/sec)	n/a



	Mouse	Keyboard
Weight	Mouse (without battery): 3.17 oz. (90 g) Dongle: 0.07 oz. (2 g)	30.69 oz. (870 g) (without battery)
Buttons	5 buttons with tilt scroll wheel	104-key standard key with 18-multimedia hot keys
Compatibility	Windows XP Service Pack 3 Windows Vista 32-bit or 64-bit Windows 7 32-bit or 64-bit	
Operating temperature	32°F to 104°F (0°C to 40°C)	
Storage temperature	-40°F to 140°F (-40°C to 60°C)	
Operating humidity	90% RH or less	
Storage humidity	95% RH or less	
Battery	AA x 2	AA x 2
Regulations and certifications	EMI, ESD, RS, EFT, FCC, IC, WHQL	

Legal notices

FCC Part 15

This device complies with Part 15 of the FCC Rules. Operation of this product is subject to the following two conditions: (1) this device may not cause harmful interference, and (2) this device must accept any interference received, including interference that may cause undesired operation.

This equipment has been tested and found to comply within the limits for a class B digital device, pursuant to Part 15 of the FCC Rules. These limits are designed to provide reasonable protection against harmful interference in a residential installation. This equipment generates, uses, and can radiate radio frequency energy and, if not installed and used in accordance with the instructions, may cause harmful interference to radio communications. However, there is no guarantee that interference will not occur in a particular installation. If this equipment does cause harmful interference to radio or television reception, which can be determined by turning the equipment off and on, the user is encouraged to try to correct the interference by one or more of the following measures:

- Reorient or relocate the receiving antenna.
- Increase the separation between the equipment and receiver.
- Connect the equipment into an outlet on a circuit different from that to which the receiver is connected.
- Consult the dealer or an experienced radio/TV technician for help.

FCC warning

Changes or modifications not expressly approved by the party responsible for compliance with the FCC Rules could void the user's authority to operate this equipment.



DHHS and FDA safety certification

This product is made and tested to meet safety standards of the FCC, requirements and compliance with safety performance of the U.S. Department of Health and Human Services, and also with FDA Radiation Performance Standards 21 CFR Subchapter J.

Canada ICES-003 statement

This Class B digital apparatus complies with Canadian ICES-003.
Cet appareil numérique de la classe (B) est conforme à la norme NMB-003 du Canada."

This device complies with part 15 of the FCC rules / RSS-210

Operation is subject to the following two conditions: 1) this device may not cause interference and 2) this device must accept any interference, including interference that may cause undesired operation of the device.





One-year limited warranty

Rocketfish Products ("Rocketfish") warrants to you, the original purchaser of this new **RF-CMBO** ("Product"), that the Product shall be free of defects in the original manufacture of the material or workmanship for one (1) year from the purchase of the Product ("Warranty Period"). This Product must be purchased from an authorized dealer of Rocketfish brand products and packaged with this warranty statement. This warranty does not cover refurbished Product. If you notify Rocketfish during the Warranty Period of a defect covered by this warranty that requires service, terms of this warranty apply.

How long does the coverage last?

The Warranty Period lasts for one year (365 days), beginning on the date you purchased the Product. The purchase date is printed on the receipt you received with the product.

What does this warranty cover?

During the Warranty Period, if the original manufacture of the material or workmanship of the Product is determined to be defective by an authorized Rocketfish repair center or store personnel, Rocketfish will (at its sole option): (1) repair the Product with new or rebuilt parts; or (2) replace the Product at no charge with new or rebuilt comparable products or parts. Products and parts replaced under this warranty become the property of Rocketfish and are not returned to you. If service of Products and parts are required after the Warranty Period expires, you must pay all labor and parts charges. This warranty lasts as long as you own your Rocketfish Product during the Warranty Period. Warranty coverage terminates if you sell or otherwise transfer the Product.

How to obtain warranty service?

If you purchased the Product at a retail store location, take your original receipt and the Product to the store you purchased it from. Make sure that you place the Product in its original packaging or packaging that provides the same amount of protection as the original packaging. If you purchased the Product from an online web site, mail your original receipt and the Product to the address listed on the web site. Make sure that you put the Product in its original packaging or packaging that provides the same amount of protection as the original packaging.

Where is the warranty valid?

This warranty is valid only to the original purchaser of the Product in the United States, Canada, and Mexico.

What does the warranty not cover?

This warranty does not cover:

- Customer instruction
- Installation
- Set up adjustments
- Cosmetic damage

- Damage due to acts of God, such as lightning strikes
- Accident
- Misuse
- Abuse
- Negligence
- Commercial use
- Modification of any part of the Product, including the antenna

This warranty also does not cover:

- Damage due to incorrect operation or maintenance
- Connection to an incorrect voltage supply
- Attempted repair by anyone other than a facility authorized by Rocketfish to service the Product
- Products sold as is or with all faults
- Consumables, such as fuses or batteries
- Products where the factory applied serial number has been altered or removed

REPAIR REPLACEMENT AS PROVIDED UNDER THIS WARRANTY IS YOUR EXCLUSIVE REMEDY. ROCKETFISH SHALL NOT BE LIABLE FOR ANY INCIDENTAL OR CONSEQUENTIAL DAMAGES FOR THE BREACH OF ANY EXPRESS OR IMPLIED WARRANTY ON THIS PRODUCT, INCLUDING, BUT NOT LIMITED TO, LOST DATA, LOSS OF USE OF YOUR PRODUCT, LOST BUSINESS OR LOST PROFITS. ROCKETFISH PRODUCTS MAKES NO OTHER EXPRESS WARRANTIES WITH RESPECT TO THE PRODUCT, ALL EXPRESS AND IMPLIED WARRANTIES FOR THE PRODUCT, INCLUDING, BUT NOT LIMITED TO, ANY IMPLIED WARRANTIES OF AND CONDITIONS OF MERCHANTABILITY AND FITNESS FOR A PARTICULAR PURPOSE, ARE LIMITED IN DURATION TO THE WARRANTY PERIOD SET FORTH ABOVE AND NO WARRANTIES, WHETHER EXPRESS OR IMPLIED, WILL APPLY AFTER THE WARRANTY PERIOD. SOME STATES, PROVINCES AND JURISDICTIONS DO NOT ALLOW LIMITATIONS ON HOW LONG AN IMPLIED WARRANTY LASTS, SO THE ABOVE LIMITATION MAY NOT APPLY TO YOU. THIS WARRANTY GIVES YOU SPECIFIC LEGAL RIGHTS, AND YOU MAY ALSO HAVE OTHER RIGHTS, WHICH VARY FROM STATE TO STATE OR PROVINCE TO PROVINCE.

Contact Rocketfish:

For customer service please call 1-800-620-2790

www.rocketfishproducts.com

Distributed by Best Buy Purchasing, LLC

7601 Penn Avenue South, Richfield, Minnesota, U.S.A. 55423-3645

© 2010 BBY Solutions, Inc.

All rights reserved. ROCKETFISH is a trademark of BBY Solutions, Inc. Registered in some countries. All other products and brand names are trademarks of their respective owners.





www.rocketfishproducts.com (800) 620-2790
Distributed by Best Buy Purchasing, LLC
7601 Penn Avenue South, Richfield, MN 55423-3645 USA
© 2010 BBY Solutions, Inc.
All rights reserved. ROCKETFISH is a trademark of BBY Solutions, Inc.
All other products and brand names are trademarks of their respective owners.

10-0213
ENGLISH

