



Ultraslim Wireless Keyboard and Mouse

(KBRF2271, N30, N30_D)

User's Manual

Trademarks

The following terms are trademarks of Lenovo in the United States, other countries, or both:

Lenovo

The Lenovo logo

ThinkCentre

ThinkPad

Other company, product, or service names may be trademarks or service marks of others.

Service and Support

The following information describes the technical support that is available for your product, during the warranty period or throughout the life of your product. Refer to the Lenovo Limited Warranty for a full explanation of Lenovo warranty terms.

© Copyright Lenovo 2009

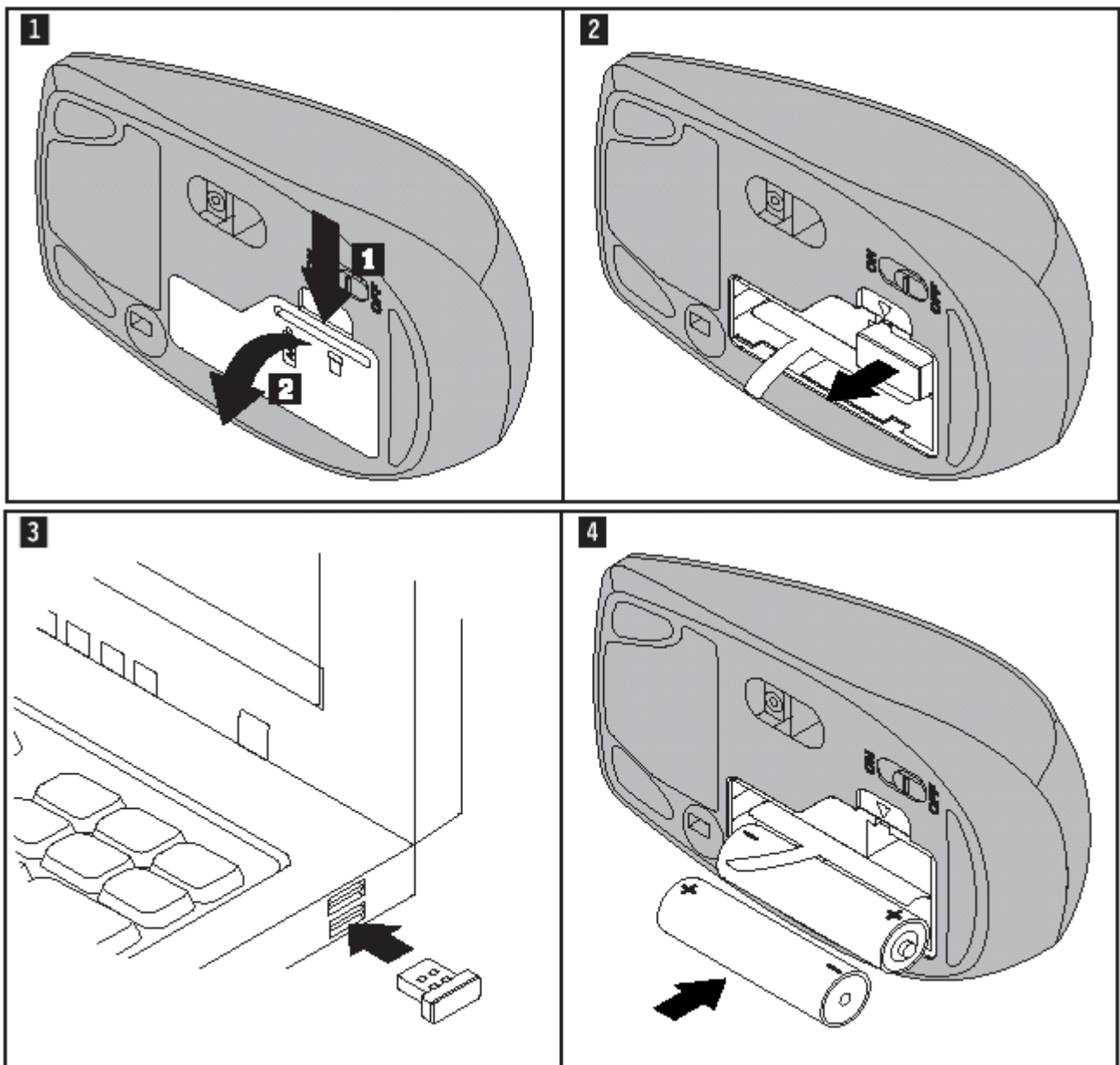
Installing the Lenovo Ultra-slim Wireless Keyboard and Mouse

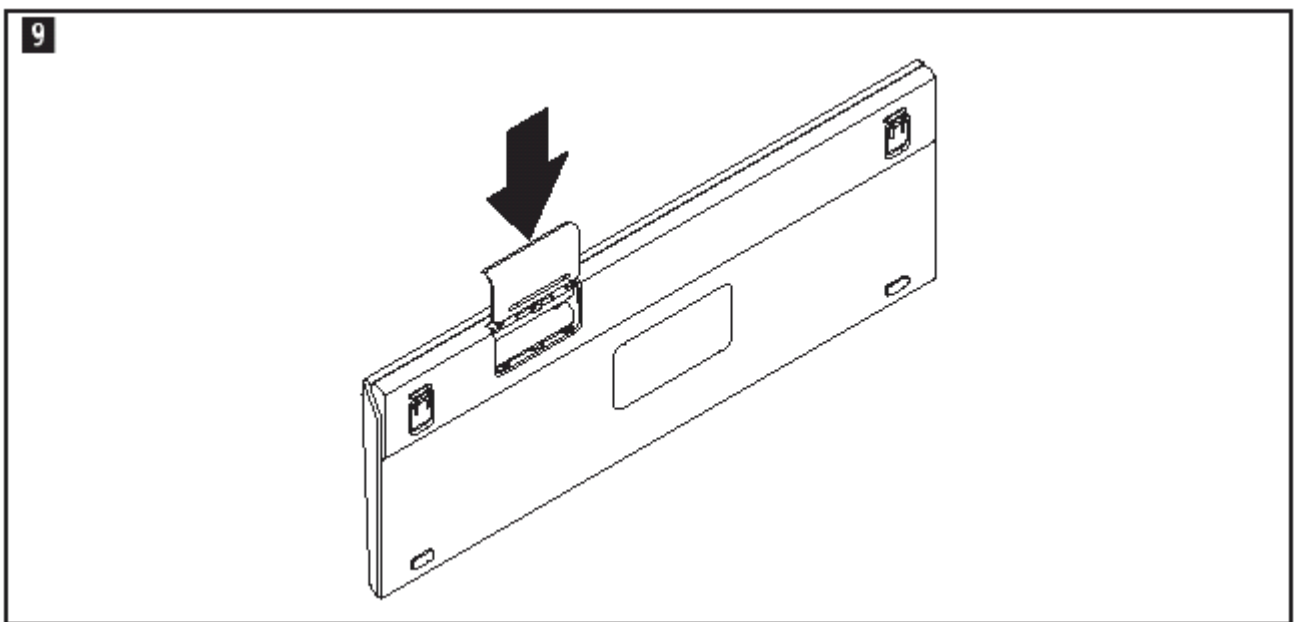
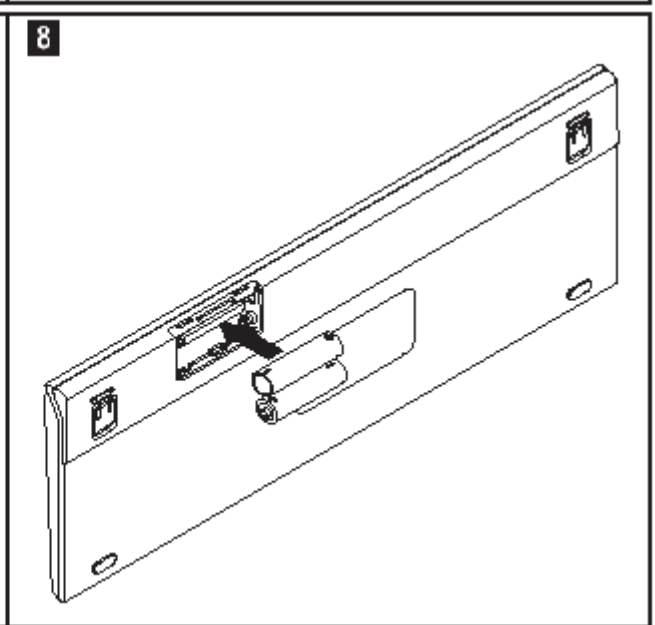
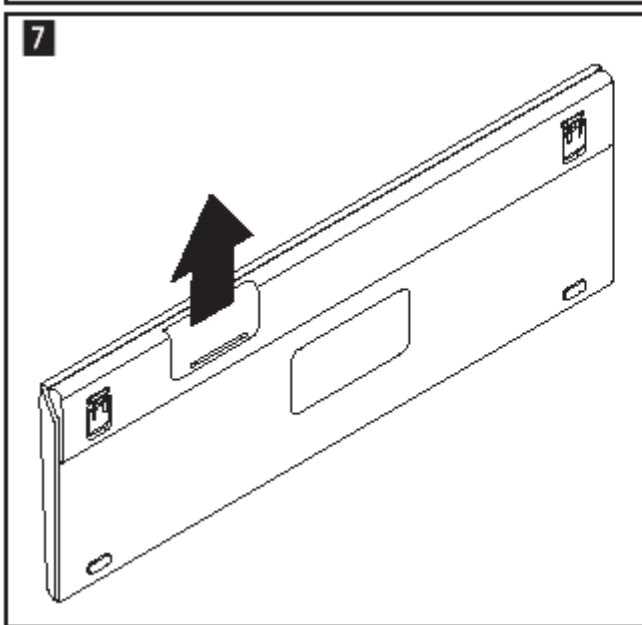
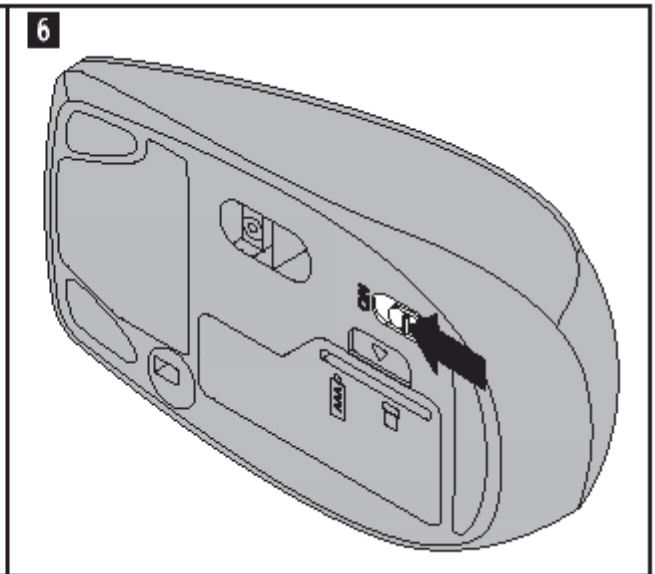
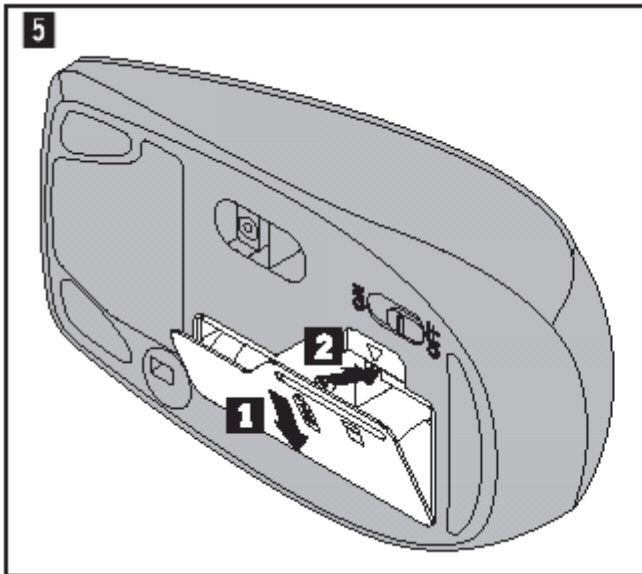
This section provides information on installing the Lenovo Ultra-slim Wireless Keyboard and Mouse.

To install the Lenovo Ultra-slim Wireless Keyboard and Mouse, follow the following step-by-step illustrations:

- ▮ Steps 1 to 6: installing the USB dongle, the wireless mouse batteries, and the wireless mouse.
- ▮ Steps 7 to 9: installing the wireless keyboard batteries.

Important: Before using the Lenovo Ultra-slim Wireless Keyboard and Mouse, be sure to correctly install the batteries for both the mouse and the keyboard.





Electronic emission notices

The following information refers to the Lenovo Ultra-slim Wireless Keyboard and Mouse.

Federal Communications Commission Declaration of Conformity

This equipment has been tested and found to comply with the limits for a Class B digital device, pursuant to Part 15 of the FCC Rules. These limits are designed to provide reasonable protection against harmful interference in a residential installation. This equipment generates, uses, and can radiate radio frequency energy and, if not installed and used in accordance with the instructions, may cause harmful interference to radio communications.

However, there is no guarantee that interference will not occur in a particular installation. If this equipment does cause harmful interference to radio or television reception, which can be determined by turning the equipment off and on, the user is encouraged to try to correct the interference by one or more of the following measures:

- I Reorient or relocate the receiving antenna.
- I Increase the separation between the equipment and receiver.
- I Connect the equipment into an outlet on a circuit different from that to which the receiver is connected.
- I Consult an authorized dealer or service representative for help.

This device complies with Part 15 of the FCC Rules. Operation is subject to the following two conditions:

- (1) This device may not cause harmful interference, and
- (2) This device must accept any interference received, including interference that may cause undesired operation.

FCC Caution: Any changes or modifications not expressly approved by the party responsible for compliance could void the user's authority to operate this equipment.

IMPORTANT NOTE:

This transmitter must not be co-located or operating in conjunction with any other antenna or transmitter.



Industry Canada Class B emission compliance statement

This Class B digital apparatus complies with Canadian ICES-003.

IC Statement

Operation is subject to the following two conditions: 1) this device may not cause interference and 2) this device must accept any interference, including interference that may cause undesired operation of the device.



Important information for the European Directive 2002/96/EC

The Waste Electrical and Electronic Equipment (WEEE) mark applies only to countries within the European Union (EU) and Norway. Appliances are labeled in accordance with European Directive 2002/96/EC concerning waste electrical and electronic equipment (WEEE). The Directive determines the framework for the return and recycling of used appliances as applicable throughout the European Union. This label is applied to various products to indicate that the product is not to be thrown away, but rather reclaimed upon end of life per this Directive. Users of electrical and electronic equipment (EEE) with the WEEE marking per Annex IV of the WEEE Directive must not dispose of end of life EEE as unsorted municipal waste, but use the collection framework available to them for the return, recycle, recovery of WEEE and minimize any potential effects of EEE on the environment and human health due to the presence of hazardous substances. For additional WEEE information go to:

<http://www.lenovo.com/lenovo/environment>.



Certification for KBRF2271 (keyboard), N30 (mouse), and N30_D (dongle):

Brazil (ANATEL) compliance



Chile (Subtel) compliance

SUBTEL: XXXXX

Egypt (NTRA) compliance

NTRA: W-KMb-00

India (ETA) compliance

ETA-XXX/2009-A

Mexico(COFETEL) compliance

COFETEL: RCPLEMO09-XXXX

Indonesia (DGPT) compliance

XXXXX/POSTEL/2009
2254

Singapore (IDA) compliance

Complies with
IDA Standards
DA 103787

South Africa(ICASA) compliance



Korea Class B Compliance

이 기기는 가정용으로 전자파 적합등록을 한 기기로서
주거지역에서는 물론 모든 지역에서 사용할 수 있습니다.

Japan VCCI Class B Compliance

この装置は、クラスB情報技術装置です。この装置は、家庭環境で使用することを目的としていますが、この装置がラジオやテレビジョン受信機に近接して使用されると、受信障害を引き起こすことがあります。
取扱説明書に従って正しい取り扱いをして下さい。

Turkish statement of compliance

The Lenovo product meets the requirements of the Republic of Turkey Directive on the Restriction of the Use of Certain Hazardous Substances in Electrical and Electronic Equipment (EEE).

Türkiye EEE Yönetmeliğine Uygunluk Beyanı

Bu Lenovo ürünü, T.C. Çevre ve Orman Bakanlığı'nın "Elektrik ve Elektronik Eşyalarda Bazı Zararlı Maddelerin Kullanımının Sınırlandırılmasına Dair Yönetmelik (EEE)" direktiflerine uygundur.

EEE Yönetmeliğine Uygundur.