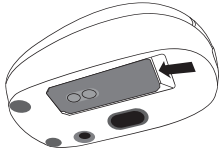


1. For added portability or when the mouse is not in use, you can slide the receiver into its slot on the bottom of the mouse.
2. Power can be automatically switched off after the receiver fully stored.

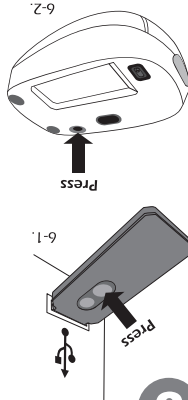
STORING THE RECEIVER IN THE MOUSE



7

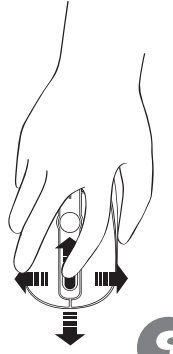
1. Make sure that the mouse and receiver are positioned as specified earlier in these instructions.
2. Press the button on the wireless receiver, and then immediately press the button on the bottom of the mouse.

TO RECONNECT THE MOUSE TO THE RECEIVER



6

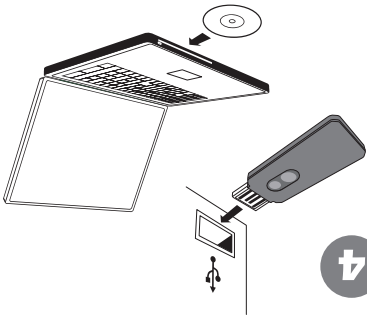
- Try using the mouse. If it does not work as expected, make sure that you completed the following procedures as specified earlier in these instructions:
- Each battery is new and inserted correctly.
 - The receiver is properly connected to the computer.
 - The receiver and mouse are properly positioned within their wireless range.
- If the mouse is still not working, try reconnecting the mouse to the receiver.



5

TEST THE MOUSE

- Green LED on Receiver = mouse movement
 - Red LED on Receiver = low battery
- Automatic connection. Install the driver.



4

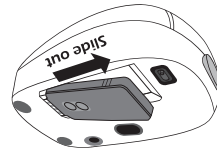
- GREEN light = battery good
 - RED light blinking slowly = low battery
 - RED light blinking rapidly = extremely low
- Once receiver is out, LED on mouse will light up.

- On: Receiver In
 - Off: Receiver Out
- Slide out the USB receiver.

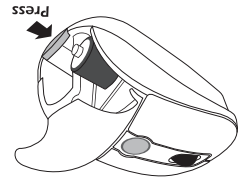
Press the button and open the battery door to insert one AA battery.



3

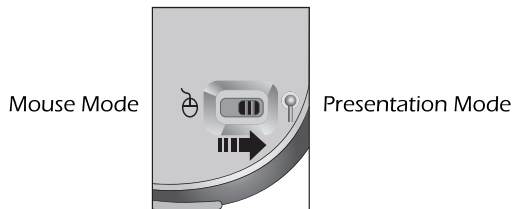


2



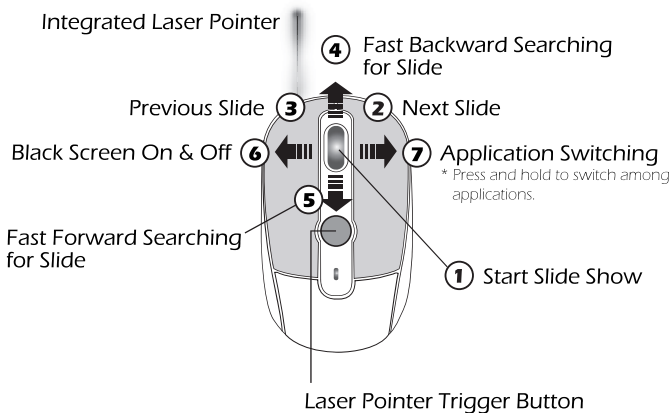
1

8 HOW TO OPERATE PRESENTER FUNCTION?



Manually switch (considering safety risk to human eyes) to Presentation Mode to enable laser pointer and Microsoft Power Point control functions.

PRESENTATION MODE



Wireless Optical Presenter Mouse
PRESENTER

INSTALLATION GUIDE

Federal Communication Commission Interference Statement

This equipment has been tested and found to comply with the limits for a Class B digital device, pursuant to Part 15 of the FCC Rules. These limits are designed to provide reasonable protection against harmful interference in a residential installation. This equipment generates, uses and can radiate radio frequency energy and, if not installed and used in accordance with the instructions, may cause harmful interference to radio communications. However, there is no guarantee that interference will not occur in a particular installation. If this equipment does cause harmful interference to radio or television reception, which can be determined by turning the equipment off and on, the user is encouraged to try to correct the interference by one of the following measures:

- Reorient or relocate the receiving antenna.
- Increase the separation between the equipment and receiver.
- Connect the equipment into an outlet on a circuit different from that to which the receiver is connected.
- Consult the dealer or an experienced radio/TV technician for help.

This device complies with Part 15 of the FCC Rules. Operation is subject to the following two conditions: (1) This device may not cause harmful interference, and (2) this device must accept any interference received, including interference that may cause undesired operation.

FCC Caution: Any changes or modifications not expressly approved by the party responsible for compliance could void the user's authority to operate this equipment.

IMPORTANT NOTE:

FCC Radiation Exposure Statement:

This equipment complies with FCC radiation exposure limits set forth for an uncontrolled environment. End users must follow the specific operating instructions for satisfying RF exposure compliance.

This transmitter must not be co-located or operating in conjunction with any other antenna or transmitter.