

WIDCOMM Bluetooth Software - NON PRODUCTION 1.4.2 Build 10 - Ins...

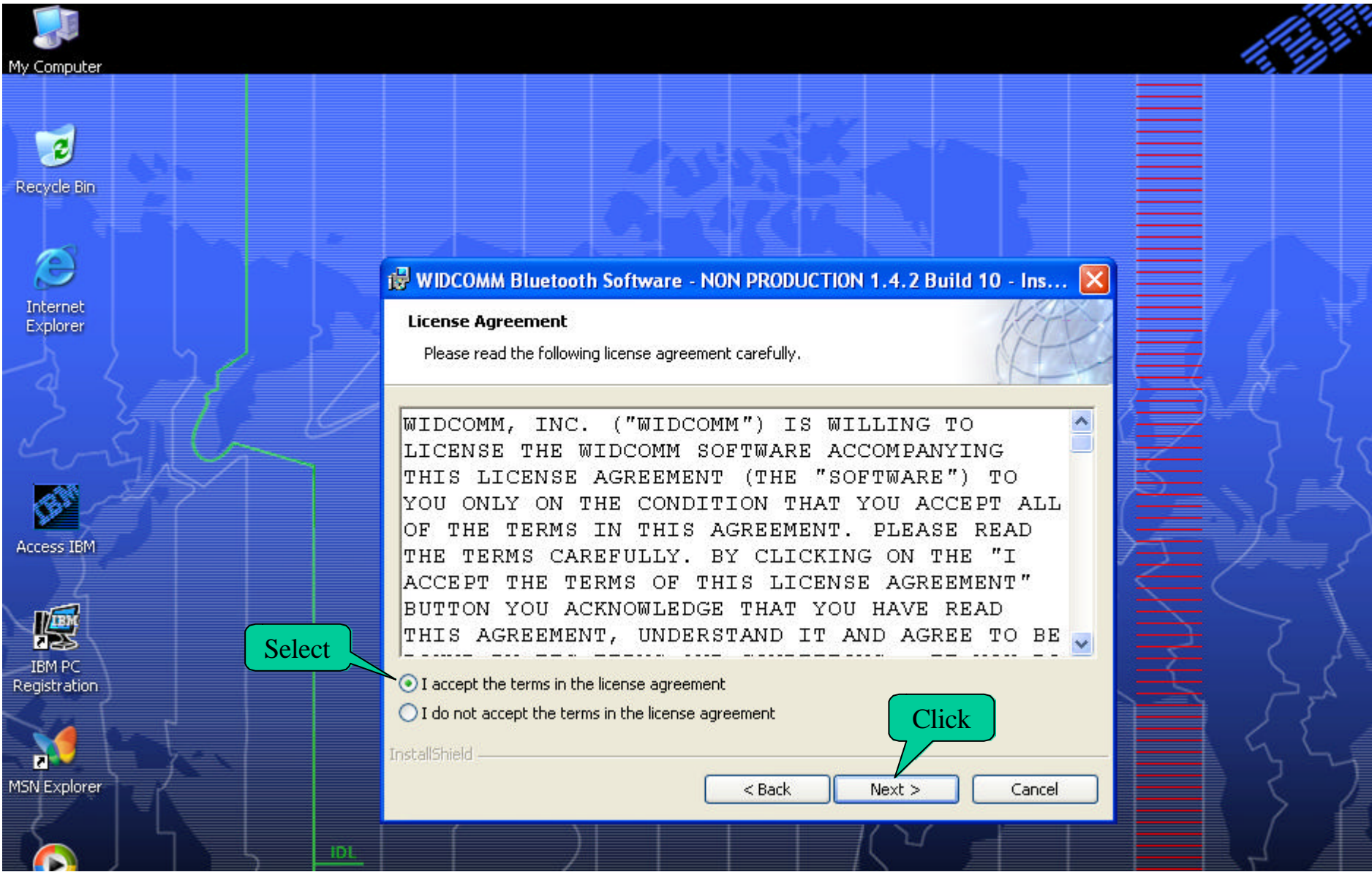
**Welcome to the InstallShield Wizard for  
WIDCOMM Bluetooth Software - NON  
PRODUCTION 1.4.2 Build 10**

The InstallShield(R) Wizard will install WIDCOMM Bluetooth Software - NON PRODUCTION on your computer. To continue, click Next.

WARNING: This program is protected by copyright law and international treaties.

Click

< Back    Next >    Cancel



**WIDCOMM Bluetooth Software - NON PRODUCTION 1.4.2 Build 10 - Ins...**

**License Agreement**

Please read the following license agreement carefully.

WIDCOMM, INC. ("WIDCOMM") IS WILLING TO LICENSE THE WIDCOMM SOFTWARE ACCOMPANYING THIS LICENSE AGREEMENT (THE "SOFTWARE") TO YOU ONLY ON THE CONDITION THAT YOU ACCEPT ALL OF THE TERMS IN THIS AGREEMENT. PLEASE READ THE TERMS CAREFULLY. BY CLICKING ON THE "I ACCEPT THE TERMS OF THIS LICENSE AGREEMENT" BUTTON YOU ACKNOWLEDGE THAT YOU HAVE READ THIS AGREEMENT, UNDERSTAND IT AND AGREE TO BE

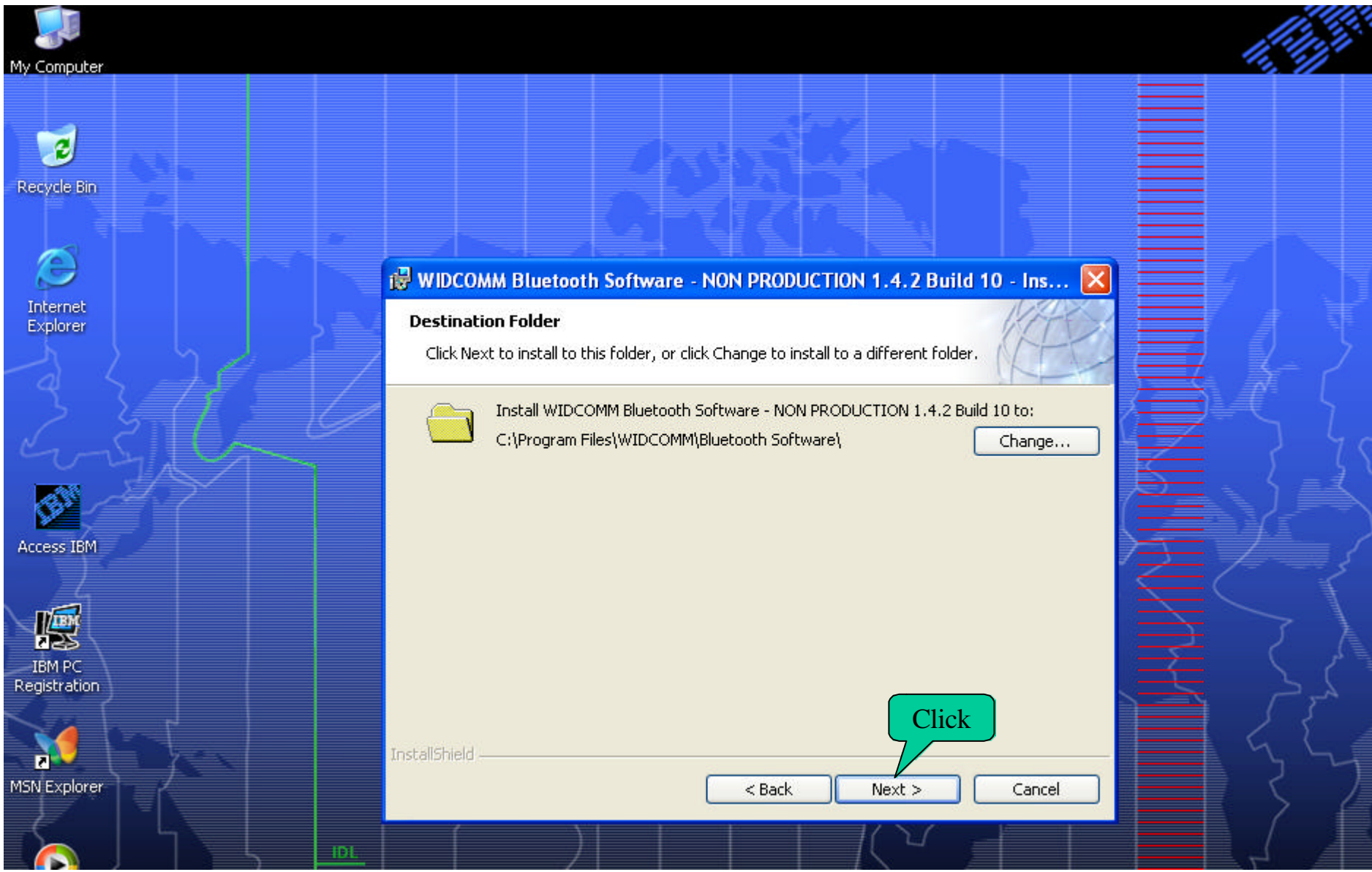
I accept the terms in the license agreement  
 I do not accept the terms in the license agreement

InstallShield

< Back   Next >   Cancel

Select

Click



**WIDCOMM Bluetooth Software - NON PRODUCTION 1.4.2 Build 10 - Ins...**

**Destination Folder**

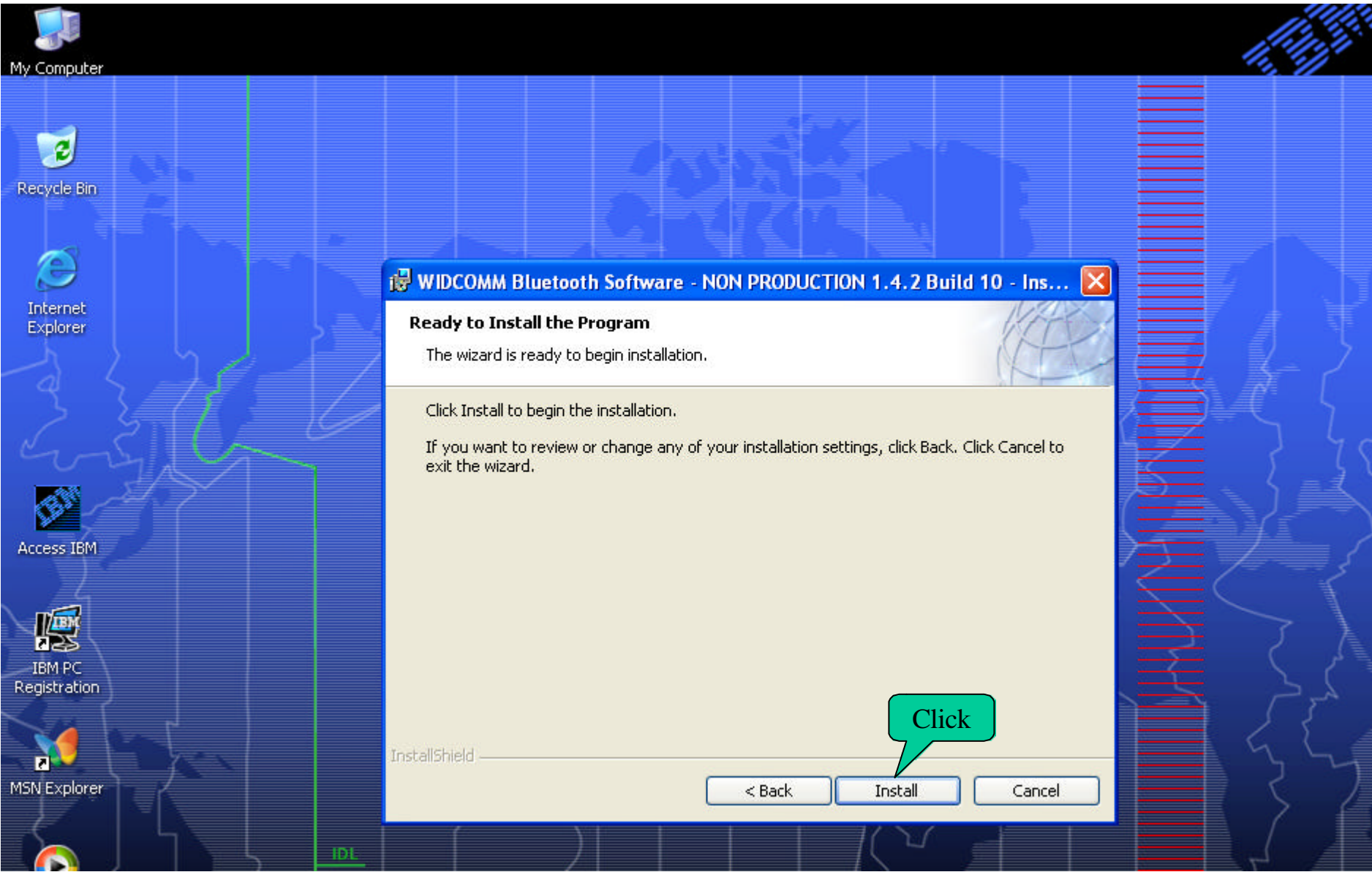
Click Next to install to this folder, or click Change to install to a different folder.

Install WIDCOMM Bluetooth Software - NON PRODUCTION 1.4.2 Build 10 to:  
C:\Program Files\WIDCOMM\Bluetooth Software\ Change...

Click

< Back Next > Cancel

InstallShield



**WIDCOMM Bluetooth Software - NON PRODUCTION 1.4.2 Build 10 - Ins...**

**Ready to Install the Program**

The wizard is ready to begin installation.

Click Install to begin the installation.

If you want to review or change any of your installation settings, click Back. Click Cancel to exit the wizard.

Click

- < Back
- Install
- Cancel

My Computer

Recycle Bin

Internet Explorer

Access IBM

IBM PC Registration

MSN Explorer


**WIDCOMM Bluetooth Software - NON PRODUCTION 1.4.2 Build ...**

**Installing WIDCOMM Bluetooth Software - NON PRODUCTION**

The program features you selected are being installed.

Please wait while the InstallShield Wizard installs WIDCOMM Bluetooth Software - NON PRODUCTION. This may take several minutes.

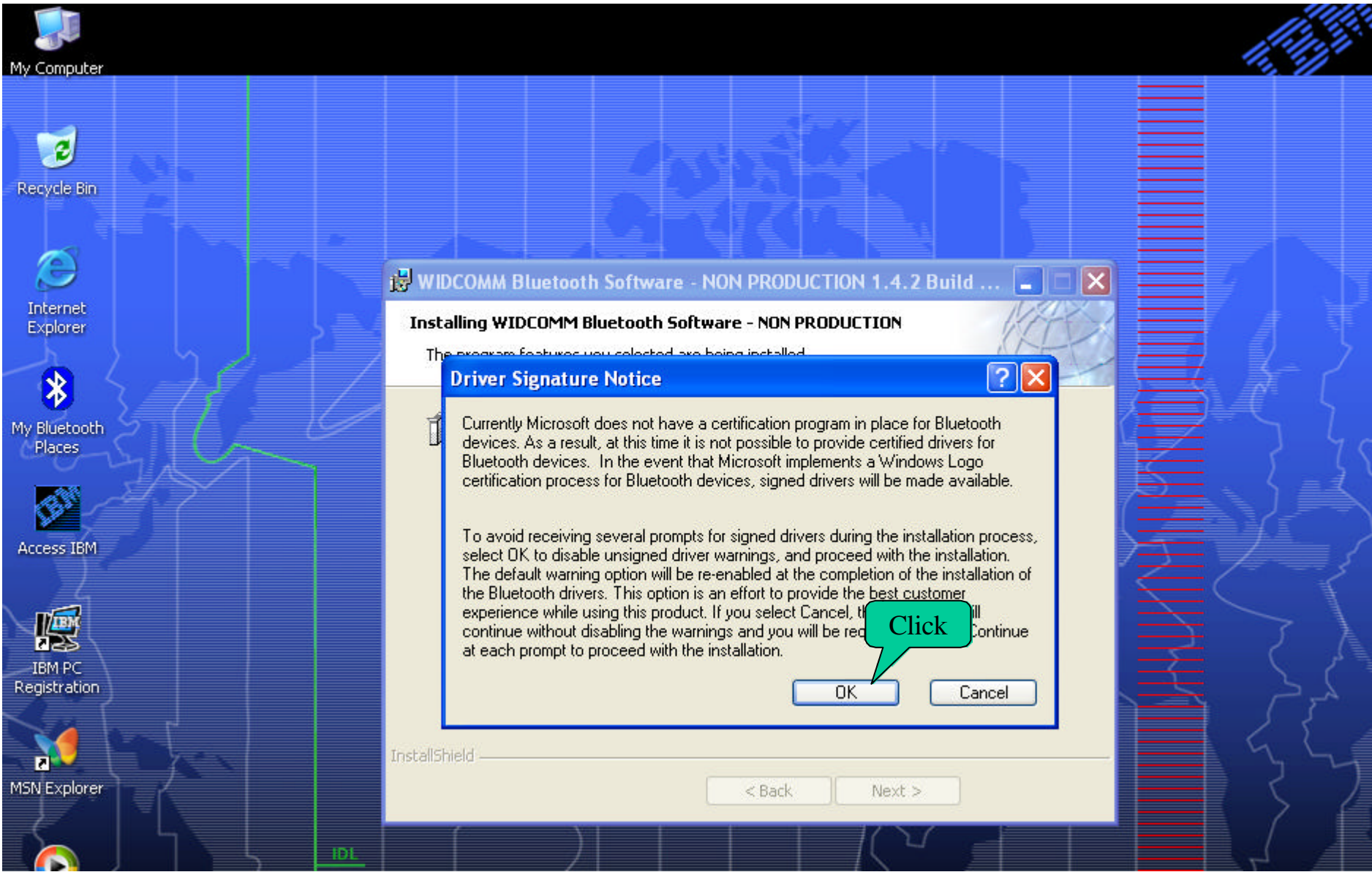
Status:



InstallShield

< Back      Next >

IDI



My Computer

Recycle Bin

Internet Explorer

My Bluetooth Places

Access IBM

IBM PC Registration

MSN Explorer

WIDCOMM Bluetooth Software - NON PRODUCTION 1.4.2 Build ...

**Installing WIDCOMM Bluetooth Software - NON PRODUCTION**

The program features you selected are being installed.

**Driver Signature Notice**

Currently Microsoft does not have a certification program in place for Bluetooth devices. As a result, at this time it is not possible to provide certified drivers for Bluetooth devices. In the event that Microsoft implements a Windows Logo certification process for Bluetooth devices, signed drivers will be made available.

To avoid receiving several prompts for signed drivers during the installation process, select OK to disable unsigned driver warnings, and proceed with the installation. The default warning option will be re-enabled at the completion of the installation of the Bluetooth drivers. This option is an effort to provide the best customer experience while using this product. If you select Cancel, the installation will continue without disabling the warnings and you will be required to click Continue at each prompt to proceed with the installation.

OK Cancel

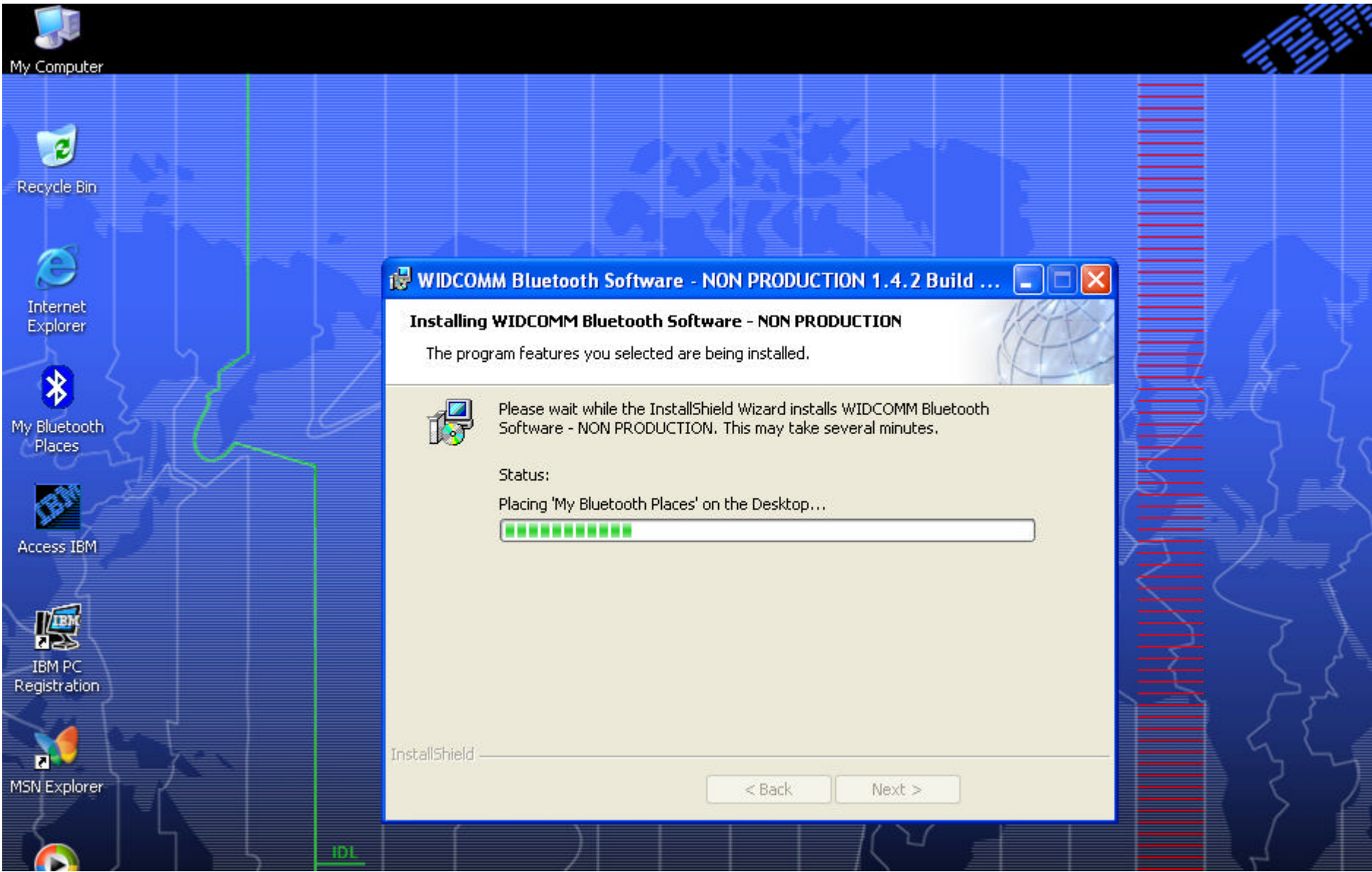
InstallShield

< Back Next >

Click

IDL





**WIDCOMM Bluetooth Software - NON PRODUCTION 1.4.2 Build ...**

**Installing WIDCOMM Bluetooth Software - NON PRODUCTION**

The program features you selected are being installed.

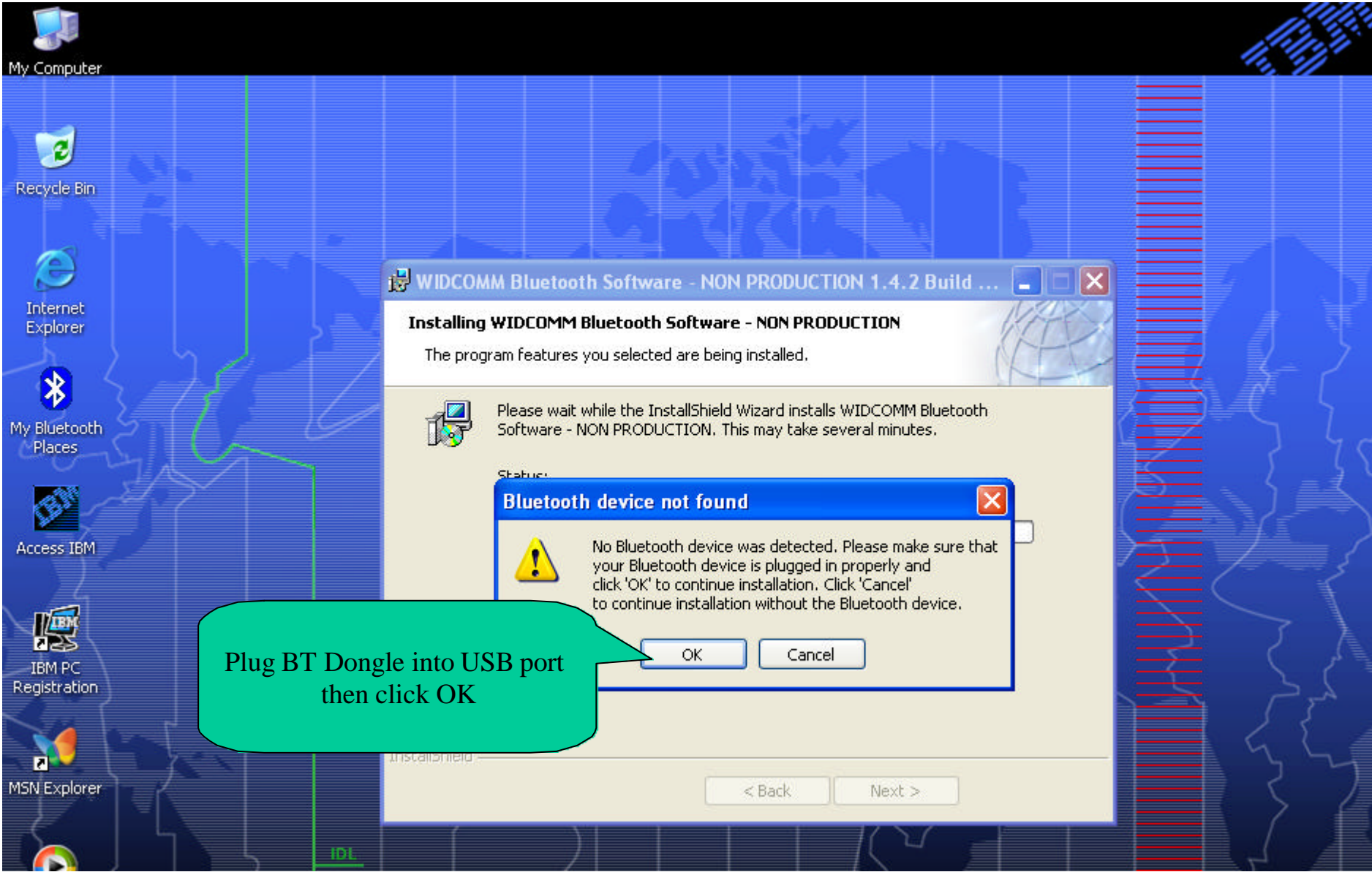
Please wait while the InstallShield Wizard installs WIDCOMM Bluetooth Software - NON PRODUCTION. This may take several minutes.

Status:  
Placing 'My Bluetooth Places' on the Desktop...

Progress bar: 10 green segments

InstallShield

< Back      Next >



My Computer

Recycle Bin

Internet Explorer

My Bluetooth Places

Access IBM

IBM PC Registration

MSN Explorer

WIDCOMM Bluetooth Software - NON PRODUCTION 1.4.2 Build ...

**Installing WIDCOMM Bluetooth Software - NON PRODUCTION**

The program features you selected are being installed.

Please wait while the InstallShield Wizard installs WIDCOMM Bluetooth Software - NON PRODUCTION. This may take several minutes.

Status:

**Bluetooth device not found**



No Bluetooth device was detected. Please make sure that your Bluetooth device is plugged in properly and click 'OK' to continue installation. Click 'Cancel' to continue installation without the Bluetooth device.

OK

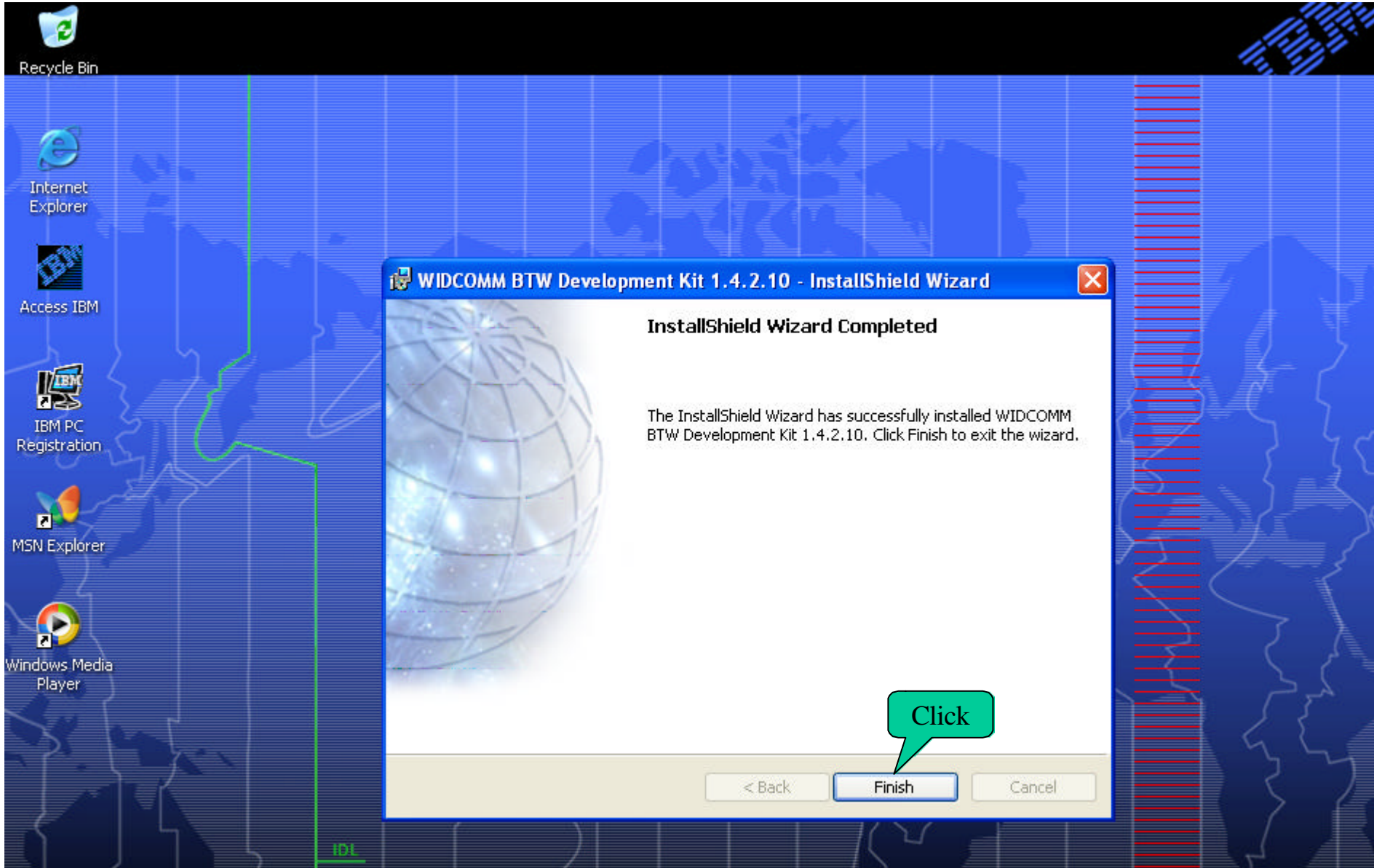
Cancel

Plug BT Dongle into USB port then click OK

< Back

Next >

IDL



WIDCOMM BTW Development Kit 1.4.2.10 - InstallShield Wizard

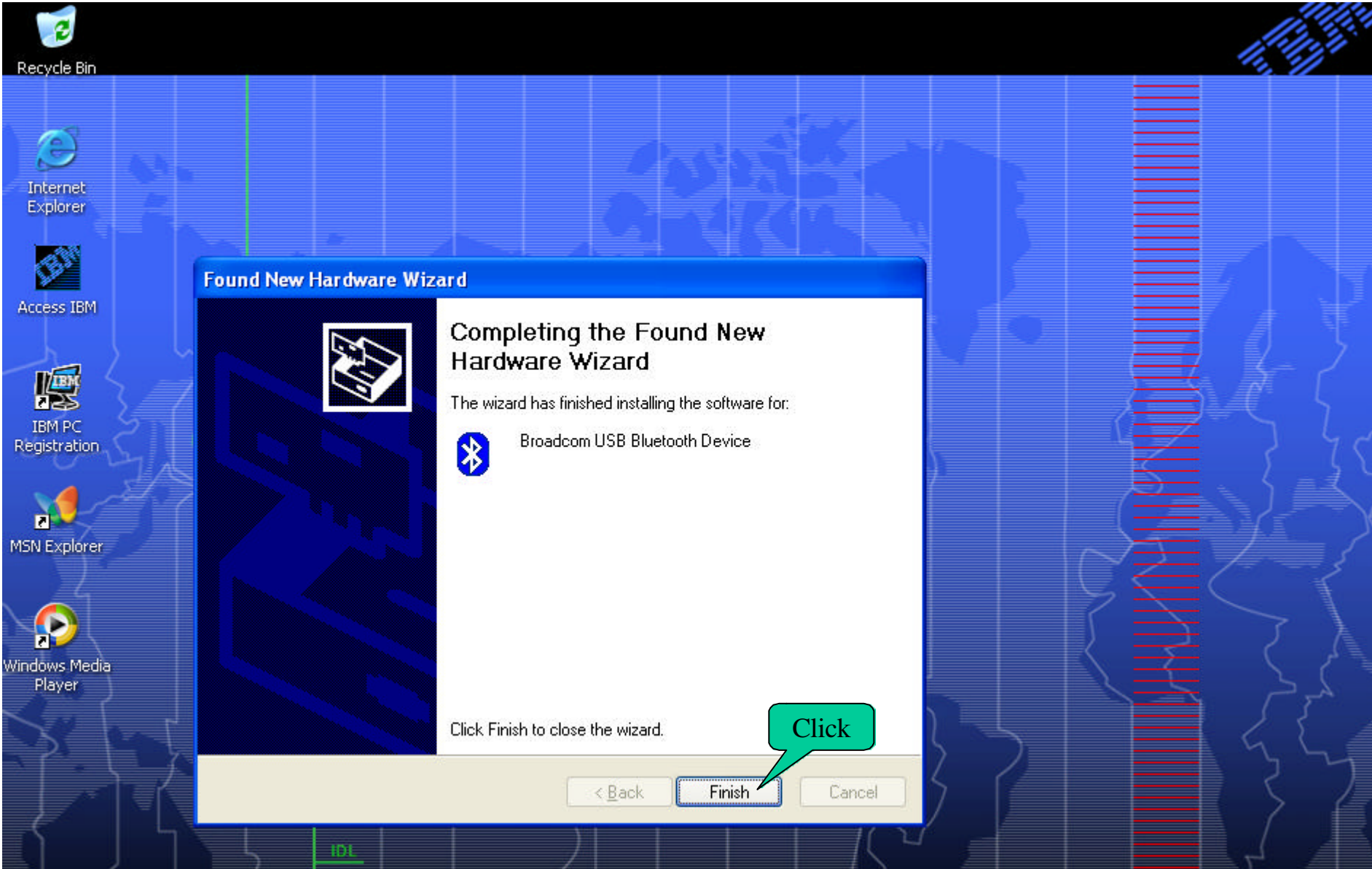
**InstallShield Wizard Completed**

The InstallShield Wizard has successfully installed WIDCOMM BTW Development Kit 1.4.2.10. Click Finish to exit the wizard.

Click

< Back   Finish   Cancel

IDL



Recycle Bin

Internet Explorer

Access IBM

IBM PC Registration

MSN Explorer

Windows Media Player

### Found New Hardware Wizard



## Completing the Found New Hardware Wizard

The wizard has finished installing the software for:



Broadcom USB Bluetooth Device

Click Finish to close the wizard.

Click

< Back

Finish

Cancel

IDL

**Initial Bluetooth Configuration Wizard**



### Initial Bluetooth Configuration Wizard

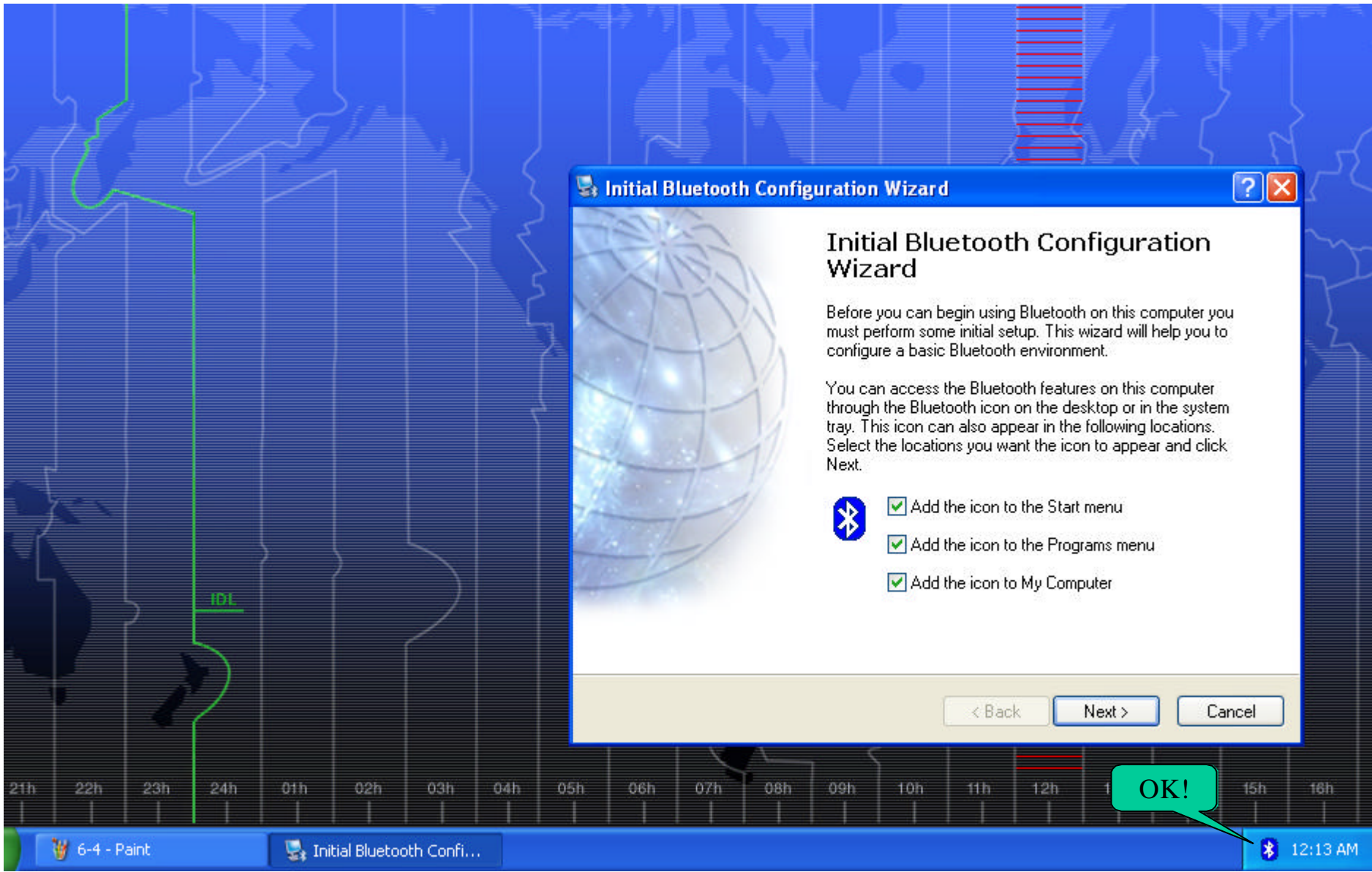
Before you can begin using Bluetooth on this computer you must perform some initial setup. This wizard will help you to configure a basic Bluetooth environment.

You can access the Bluetooth features on this computer through the Bluetooth icon on the desktop or in the system tray. This icon can also appear in the following locations. Select the locations you want the icon to appear and click Next.

- Add the icon to the Start menu
- Add the icon to the Programs menu
- Add the icon to My Computer

< Back   Next >   Cancel

OK!



### **Federal Communication Commission Interference Statement**

This equipment has been tested and found to comply with the limits for a Class B digital device, pursuant to Part 15 of the FCC Rules. These limits are designed to provide reasonable protection against harmful interference in a residential installation. This equipment generates, uses and can radiate radio frequency energy and, if not installed and used in accordance with the instructions, may cause harmful interference to radio communications. However, there is no guarantee that interference will not occur in a particular installation. If this equipment does cause harmful interference to radio or television reception, which can be determined by turning the equipment off and on, the user is encouraged to try to correct the interference by one of the following measures:

- Reorient or relocate the receiving antenna.
- Increase the separation between the equipment and receiver.
- Connect the equipment into an outlet on a circuit different from that to which the receiver is connected.
- Consult the dealer or an experienced radio/TV technician for help.

This device complies with Part 15 of the FCC Rules. Operation is subject to the following two conditions: (1) This device may not cause harmful interference, and (2) this device must accept any interference received, including interference that may cause undesired operation.

FCC Caution: Any changes or modifications not expressly approved by the party responsible for compliance could void the user's authority to operate this equipment.

### **IMPORTANT NOTE:**

#### **FCC Radiation Exposure Statement:**

This equipment complies with FCC radiation exposure limits set forth for an uncontrolled environment.

This transmitter must not be co-located or operating in conjunction with any other antenna or transmitter.