



Bluetooth® Wireless Mouse VGP-BMS30

Operating Instructions Mode d'emploi



2-653-693-11(1) © 2005 Sony Corporation Printed in Japan SONY

English

WARNING

To prevent fire or shock hazard, do not expose the unit to rain or moisture.

Owner's Record

The model number and the serial number are located on the bottom of the mouse. Record the serial number in the space provided below. Refer to this number whenever you call your Sony dealer regarding this product.

Model No. VGP-BMS30
Serial No. _____

For customers in the U.S.A.

This equipment has been tested and found to comply with the limits for a Class B digital device, pursuant to Part 15 of the FCC Rules. These limits are designed to provide reasonable protection against harmful interference in a residential installation. This equipment generates, uses, and can radiate radio frequency energy and, if not installed and used in accordance with the instructions, may cause harmful interference to radio communications. However, there is no guarantee that interference will not occur in a particular installation. If this equipment does cause harmful interference to radio or television reception, which can be determined by turning the equipment off and on, the user is encouraged to try to correct the interference by one or more of the following measures:

- Reorient or relocate the receiving antenna.
- Increase the separation between the equipment and receiver.
- Connect the equipment into an outlet on a circuit different from that to which the receiver is connected.
- Consult the dealer or an experienced radio/TV technician for help.

The shielded interface cable recommended in this manual must be used with this equipment in order to comply with the limits for a digital device pursuant to subpart B of Part 15 of the FCC Rules.

You are cautioned that any changes or modifications not expressly approved in this manual could void your authority to operate this equipment.

For questions regarding your product or for the Sony Service Center nearest you, call 1-888-476-6972 in the United States or 1-800-961-7669 in Canada. The number below is for FCC related matters only.

Declaration of Conformity

Trade Name: SONY
Model No.: VGP-BMS30
Responsible Party: Sony Electronics Inc.
Address: 16450 W. Bernardo Dr., San Diego, CA 92127 U.S.A.
Telephone No.: 858-942-2230

This device complies with Part 15 of the FCC Rules. Operation is subject to the following two conditions: (1) This device may not cause harmful interference, and (2) this device must accept any interference received, including interference that may cause undesired operation.

FCC Radiation Exposure Statement:

These products comply with FCC radiation exposure limits set forth for uncontrolled equipment and meet the FCC radio frequency (RF) Exposure Guidelines in Supplement C to OET65. These products have very low levels of RF energy that it is deemed to comply without testing of specific absorption ratio (SAR).

For customers in Canada

This Class B digital apparatus complies with Canadian ICES-003.

The term "IC" before the radio certification number only signifies that the Industry Canada technical specifications were met.

Operation is subject to the following two conditions: (1) This device may not cause harmful interference, and (2) this device must accept any interference received, including interference that may cause undesired operation of the device.

To prevent radio interference to the licensed service, this device is intended to be operated indoors and away from windows to provide maximum shielding. Equipment (or its transmit antenna) that is installed outdoors is subject to licensing.

IC Exposure of Humans to RF Fields

The installer of this radio equipment must ensure that the antenna is located or pointed such that it does not emit RF field in excess of Health Canada limits for the general population; consult Safety Code 6, obtainable from Health Canada's website: www.hc-sc.gc.ca/rpb.

- VAIO and V AIO are trademarks of Sony Corporation.
- Microsoft and Windows are registered trademarks of Microsoft Corporation in the United States and/or other countries.
- The Bluetooth word mark and logos are owned by the Bluetooth SIG, Inc., and any use of such marks by Sony Corporation is under license. Other trademarks and Trade names are those of their respective owners.
- All other names of systems, products, and services are trademarks of their respective owners. In this manual, the ™ or ® marks are not specified.

In this manual, Microsoft® Windows® XP Home Edition and Microsoft® Windows® XP Professional are referred to as Windows XP.

Before Use

This product is a wireless mouse equipped with Bluetooth® technology. The Bluetooth® Wireless Mouse can be used with the following notebook computers (as of September 2005):

- Sony VIAO® notebook computers** equipped with the Bluetooth function and pre-installed with Windows XP
- Sony VIAO® notebook computers with the PCGA-BA2 Bluetooth Adaptor (not supplied) connected

* Bluetooth® technology

Bluetooth wireless technology provides instant short-range connectivity without the need for cumbersome cabling. For details, refer to the manuals included with your notebook computer or the operating instructions for your Bluetooth adaptor.

** Windows Service Pack 2 must be installed. Check the OS you are using and update accordingly.

Note

Depending on the notebook computer, Bluetooth adaptor, or version of software you are using, the mouse may not operate correctly. Consult your nearest Sony dealer about proper operating environments and information about Sony VIAO® and Bluetooth compatibility.

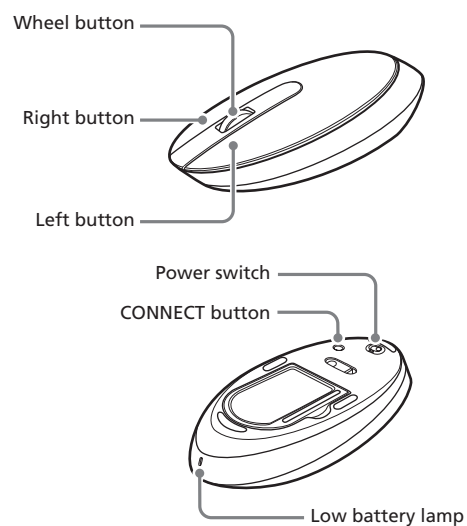
Checking to see if Windows XP Service Pack 2 is installed

- 1 Click "Start" in Windows and select "Control Panel".
- 2 In the "Control Panel", click "Performance and Maintenance" and then click "System".
- 3 Click the "General" tab in the "System Properties" screen.
If "Service Pack 2" is displayed, Windows XP Service Pack 2 is installed in your computer.

Installing Windows XP Service Pack 2

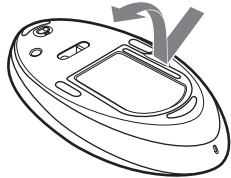
If Windows XP Service Pack 2 is not installed on your computer, download it from the Microsoft website (<http://www.microsoft.com>).

Names of Parts

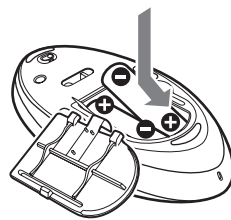


Inserting batteries into the mouse

- 1 Set the power switch located on the bottom of the mouse to OFF.
- 2 Open the battery compartment cover.



- 3 Insert the two supplied IEC R6 (size AA) batteries with the correct + - orientation.

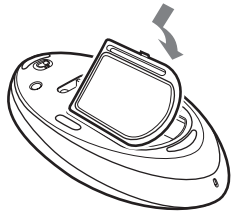


Note

To prevent battery fluid leaks and damage, observe the following precautions.

- Insert the batteries with the correct + - orientation.
- Do not charge dry cell batteries.
- Do not mix old and new batteries, or batteries of a different type.
- If the mouse has not been used for a long time, remove the batteries.
- If a battery fluid leak occurs, carefully wipe the battery compartment, and insert new batteries.
- To prevent accidental operation, be careful not to press any buttons or move the Scroll Pointer when replacing the batteries.

- 4 Close the battery compartment cover.



Note

Under normal operating conditions, a set of alkaline batteries lasts about three months. When cursor movement becomes sluggish and the communication distance between the mouse and your notebook computer decreases, check the low battery lamp on the mouse. Replace the batteries if the low battery lamp is flashing red.

When not using the mouse, set the power switch to OFF. This will make the batteries last longer.

Replacing the batteries

The low battery lamp flashing red indicates that the battery life is running low. Replace the batteries when this occurs.

Enabling communication between the mouse and your notebook computer

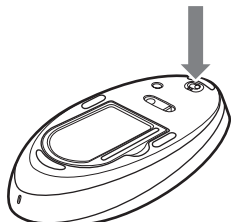
The Bluetooth function in Windows XP is used to enable communication between the mouse and your notebook computer. If your notebook computer is provided with the Bluetooth Utilities software, you can use the software to enable communication as well.

Hint

Operation of the Bluetooth Utilities software may vary depending on your notebook computer. For details on how to use the software, refer to the manuals included with your notebook computer.

Using the function in Windows XP to enable communication

- 1 Turn your notebook computer on.
- 2 Set the power switch on the bottom of the mouse to ON.



- 3 Activate the wireless function on your notebook computer.

For details, refer to the operating instructions and manuals included with your notebook computer.

- 4 Click the "Start" button in Windows and select "Control Panel".

- 5 Click "Network and Internet Connections", and click "Bluetooth Devices".

- 6 Click "Add" under the "Devices" tab.

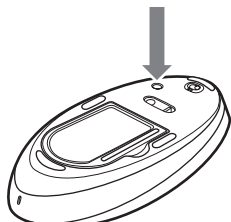
The "Add Bluetooth Device Wizard" appears.

- 7 Select the "My device is set up and ready to be found." check box.

- 8 Click "Next".

Search for Bluetooth devices begins.

- 9 Depending on your notebook computer, press the CONNECT button on the bottom of the mouse while the computer searches for Bluetooth devices.



- 10 Select "IRX-9213 Mouse" from the "Select the Bluetooth device that you want to add." list, and click "Next".

- 11 Select "Don't use passkey", and click "Next".

- 12 Click "Finish".

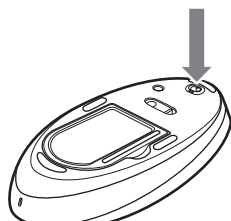
Try moving the mouse. If the pointer displayed on your screen moves in the same direction, the connection is complete.

Disconnecting

Set the power switch of the mouse to OFF.

Using the Bluetooth® Utilities software to enable communication

- 1 Turn your notebook computer on.
- 2 Set the power switch on the bottom of the mouse to ON.



- 3 Activate the wireless function on your notebook computer.

For details, refer to the operating instructions and manuals included with your notebook computer.

- 4 Double-click the Bluetooth icon in the notification area on the bottom right corner of your computer's desktop. The Bluetooth Utilities software starts up, and the "Bluetooth Settings" screen displays.

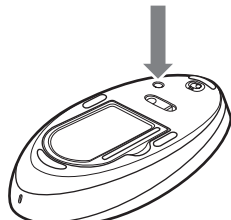
- 5 Click "New Connection".

The "Add New Device Wizard" screen appears.

- 6 Select "Express Mode", and click "Next".

Search for Bluetooth devices begins.

- 7 Depending on your notebook computer, press the CONNECT button on the bottom of the mouse while the computer searches for Bluetooth devices.



"IRX-9213 Mouse" appears in the device list.

- 8 Select "IRX-9213 Mouse", and click "Next".

- 9 Press the CONNECT button again.

- 10 Verify the contents of the screen displayed, and click "Next".

- 11 Click "Finish".

Try moving the mouse. If the pointer displayed on your screen moves in the same direction, the connection is complete.

Disconnecting

Right click the headset icon displayed in the "Bluetooth Settings" screen, and click "Disconnect" in the displayed menu.

Operating distance of the mouse

The mouse can normally be operated within about a 32 ft. (10 m) radius around the computer. Depending on the usage environment, sometimes the usable distance may be notably shorter, preventing normal operation. In such a case, take the following measures:

- Use the mouse as far away from other wireless devices as possible.
- Use the mouse closer to the computer.
- Use a mouse pad.

Using the USB Mouse

When you move the mouse, the pointer displayed on your screen moves in the same direction.

This section describes basic mouse operations and how to use the wheel button.

Notes

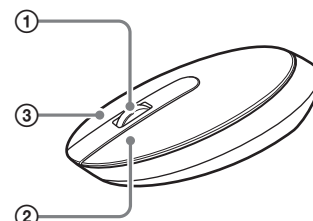
• An optical mouse senses mouse movement by using the optical sensor to detect the shadows caused by the red light on the bottom of the mouse. The optical mouse may not operate correctly on the following surfaces:

- Transparent surfaces (such as glass)
 - Surfaces that reflect light (such as highly polished veneers or mirrors)
 - Surfaces with a repetitive pattern, such as screening (like that used for printing photos in magazines and newspapers)
 - Surfaces that are striped or have another distinct, high contrast pattern
- If the mouse pointer does not move smoothly across the screen, make sure you are not using the mouse on one of the above mentioned surfaces.
- The fluoropolymer used for the soles of the mouse (PTFE, or polytetrafluoroethylene) is designed for low frictional resistance, but the mouse may slide differently depending on what material your desk or mousepad is made of.

Note

If necessary, you can adjust the mouse pointer speed under "Mouse Properties". To display "Mouse Properties", double-click "Mouse" in the "Control Panel" (with the Windows XP operating system, select "Printers" and "Other Hardware" in the "Control Panel"), then select "Mouse".

Basic operations



- ① Wheel button

Use the wheel button to easily scroll up and down in a window. You can also use auto scroll by pressing the wheel button.

- ② Left button

Use to open saved documents, pictures and other files and to run programs. Most mouse functions are performed using this button.

- ③ Right button

Use this button to display shortcut menus that allow you to copy saved documents, pictures and other files, view file details, and access various commands and settings.

Precautions

Safety

If any solid object or liquid falls onto the mouse, disconnect it and have it checked by qualified personnel before continuing its use.

Location

Do not place the mouse in a location where it is:

- On an unstable surface
- In very humid areas or where there is no ventilation
- Subject to excessive dust
- Subject to direct sunlight or extreme heat
- Extremely cold

Operation

If the mouse is brought directly from a cold to a warm location or is placed in a very damp room, moisture may condense on the inside of the mouse. If this occurs, the mouse may not work properly. In this case, wait about 30 minutes for the moisture to evaporate. If the mouse does not work properly after one hour, consult your nearest Sony dealer.

Bluetooth communications

- The 2.4 GHz band used by Bluetooth and wireless LAN devices is also used by various other devices. Bluetooth devices incorporate technology that minimizes interference from other devices using the same wavelength. However, communication speed and achievable distances may be reduced. Interference from other devices can also stop communications altogether.
- The data transfer rate will vary depending on distance and obstacles between devices, device configuration, radio interference, operating system, software application, and so on. In some cases, communication may be interrupted.
- Communication range will vary according to whether walls or other obstacles are located between devices, the material used in walls, the presence of radio frequency interference and other environmental conditions, and the type of software being used.
- If wireless LAN and Bluetooth functionality are used at the same time on the same computer, communication speed may be reduced due to electromagnetic interference, and other unwanted effects may occur.
- Please note that due to limitations of the Bluetooth standard, large files may occasionally be corrupted during continuous transfer due to electromagnetic interference from the environment.

Cleaning the outside of the mouse

Clean the mouse with a soft, dry cloth or a soft cloth lightly moistened with a mild detergent solution. Do not use any type of abrasive pad, scouring powder, or solvent such as alcohol or benzene.

Specifications

Communication method	Bluetooth Standard Ver. 1.2
Position tracking principle	Optical sensor
Sensor resolution	800 counts per inch
Wireless principle/frequency band	RF 2.4 GHz
Power requirements	3 V DC (two manganese IEC R6 [size AA] batteries)
Transmission distance	32 ft. (10 m) max. line of sight ⁴⁾
Dimensions	Approx. 2.8 × 1.5 × 4.6 in. (53.4 × 31.5 × 124.6 mm) (w × h × d)
Mass	Approx. 4.3 oz. (120 g) (including batteries)
Supported models	Sony VAIO computers with the Windows XP operating system.
Operating temperature	41°F to 95°F (5°C to 35°C) (temperature gradient less than 18°F (10°C)/hour)
Operating humidity	20% to 80% (not condensed), provided that humidity is less than 65% at 95°F (35°C) (hygrometer reading of less than 84°F (29°C))
Storage temperature	-4°F to 140°F (-20°C to 60°C) (temperature gradient less than 18°F (10°C)/hour)
Storage humidity	10% to 90% (not condensed), provided that humidity is less than 20% at 140°F (60°C) (hygrometer reading of less than 95°F (35°C))
Accessories	Manganese IEC R6 (size AA) batteries ²⁾ (2) Operating Instructions (this document) (1) Warranty Card (1)

⁴⁾ Communication range will vary according to whether walls or other obstacles are located between devices, the material used in walls, the presence of radio frequency interference and other environmental conditions, and the type of software being used.

²⁾ The supplied batteries are for testing purposes only. You can use the mouse longer by using alkaline batteries.

Design and specifications are subject to change without notice.

Troubleshooting

If you experience any of the following difficulties while using the mouse, use this troubleshooting guide to solve the problem. If a problem persists, consult your nearest Sony dealer.

Nothing happens when I press a mouse button.

- If you are using a Bluetooth adaptor, the Bluetooth adaptor is not connected properly to the USB port.
→ Close all programs, and then reconnect the Bluetooth adaptor to your computer.
- The operating system is not compatible.
→ Use a supported operating system.
- The mouse batteries are exhausted.
→ Replace the batteries. For details, see "Inserting batteries into the mouse".
- The mouse and the notebook computer are not communicating.
→ Perform the steps in "Enabling communication between the mouse and your notebook computer" to ensure that proper communication is possible.
→ In some operating environments, the usable distance may be notably shorter, preventing normal operation. Ensure that your notebook computer is not closer than 8 in. (20 cm) to another computer, the display, and other electronic devices.
→ If the mouse is too far from your notebook computer, communication is not possible. Bring the mouse and your notebook computer closer together.
- The mouse is being used on an unsuitable surface.
→ When used on a mirror, glass, or other shiny surface, or on a transparent or strongly patterned surface, the sensor on the bottom of the mouse may not be able to correctly detect the mouse movements. On such surfaces, use a mouse pad.
- The mouse may have difficulty communicating in an environment with 2.4 GHz wireless LAN or other Bluetooth communication.
→ It is best to use the mouse in a location with low interference from wireless devices.

Pressing the CONNECT button does not establish a connection.

- Check whether batteries are inserted in the mouse. For details, see "Inserting batteries into the mouse".
- If the power switch on the mouse is set to OFF, communication with the notebook computer is not possible. Check the power switch setting on the bottom of the mouse.
- If the power does not come on when the power switch is set to ON, the batteries may be exhausted. Under normal operating conditions, a set of alkaline batteries lasts about three months. Replace the batteries. For details, see "Inserting batteries into the mouse".
- Communication between the mouse and your notebook computer may not have been properly established. If the CONNECT button on the mouse is not pressed within 30 seconds after the Bluetooth device search begins, mouse communication is cancelled. In such a case, perform the procedure again to enable communication. For details, see "Enabling communication between the mouse and your notebook computer".
- If the mouse and notebook computer are too far apart, communication is not possible. The maximum communication distance between the mouse and notebook computer is about 32 ft. (10m). If used on a metal table or if obstacles lie between the mouse and notebook computer, the usable distance may be less.

The scrolling features do not work.

- The operating system is not compatible.
→ Use a supported operating system.
- The program you are using is not compatible with the scrolling features.
→ The scrolling features only work with programs that use a scroll function.
→ Some programs do not support the scrolling features.
- If you are using a Bluetooth adaptor, after the adaptor was installed while in the power-saving mode, the computer was returned to normal mode.
→ Turn off the mouse, wait a few seconds, and then reestablish communication.
- The pointer does not move when I move the mouse.
→ Processing performed by Windows or other software may temporarily disable the mouse. Wait a few moments for the processing to finish before using the mouse.
→ You may find some useful solutions in your computer's operating instructions. Refer to the manuals provided with your computer.
- The mouse batteries are exhausted.
→ If the power does not come on when the power switch is set to ON, replace the batteries. For details, see "Inserting batteries into the mouse".
- The mouse is not set to ON.
→ Set the power switch on the bottom of the mouse to ON.
- The mouse and your notebook computer are not communicating.
→ Perform the steps in "Enabling communication between the mouse and your notebook computer" to ensure that proper communication is possible.
→ In some operating environments, the usable distance may be notably shorter, preventing normal operation. Ensure that the receiver is not closer than 8 in. (20 cm) to another computer, the display, and other electronic devices.
→ If the mouse is too far from your notebook computer, communication is not possible. Bring the mouse and your notebook computer closer together.
- The mouse is being used on an unsuitable surface.
→ When used on a mirror, glass, or other shiny surface, or on a transparent or strongly patterned surface, the sensor on the bottom of the mouse may not be able to correctly detect the mouse movements. On such surfaces, use a mouse pad.

When I am using the mouse, the display goes dark or the computer enters power-saving mode.

- The computer enters power-saving mode even while a USB device is in use.
→ Change the power management settings for the computer to prevent it from entering power-saving mode. For details, refer to the manuals provided with your computer.
→ Touch the touchpad or press any key on the keyboard to exit power-saving mode.
- The computer does not return from Standby mode.
→ Touch the touchpad or press any key on the keyboard to exit this mode.

The mouse pointer does not move smoothly across the screen.

- The optical mouse distinguishes movement by reflecting the red light from its base off surfaces and detecting shadows with an optical sensor. The optical mouse may not operate correctly on the following surfaces:
 - Transparent surfaces (such as glass)
 - Surfaces that reflect light (such as glossy plastics or mirrors)
 - Surfaces with a repetitive pattern, such as screening (like those used for printing photos in magazines and newspapers)
 - Surfaces that are striped or have another distinct, high-contrast pattern
- If the mouse pointer does not move smoothly across the screen, make sure you are not using the mouse on one of the surfaces listed above.

Exiting power-saving mode with the mouse takes a long time or is not possible.

- Press any key or the power button on the keyboard.
- The mouse does not move smoothly after returning from the power-saving mode.
→ Deactivate the Bluetooth connection, wait a few seconds, and then reestablish connection.
- The mouse is not found when the Bluetooth device search is performed.
→ The mouse is unable to be detected.
→ Press the CONNECT button on the mouse, and then try the search again.