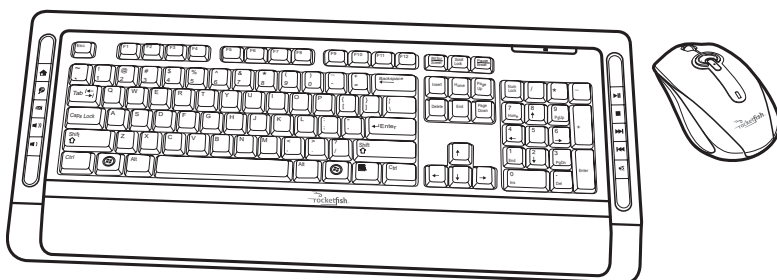


Bluetooth Keyboard and Mouse Combo Set



User Manual

Bluetooth Keyboard and Mouse Combo Set

FCC Compliance Statement

This equipment has been tested and found to comply with the limits for a Class B digital device, pursuant to Part 15 of the FCC Rules. These limits are designed to provide reasonable protection against harmful interference in a residential installation. This equipment generates, uses and can radiate radio frequency energy and, if not installed and used in accordance with the instructions, may cause harmful interference to radio communications. However, there is no guarantee that interference will not occur in a particular installation. If this equipment does cause harmful interference to radio or television reception, which can be determined by turning the equipment off and on, the user is encouraged to try to correct the interference by one of the following measures:

- Reorient or relocate the receiving antenna.
- Increase the separation between the equipment and receiver.
- Connect the equipment into an outlet on a circuit different from that to which the receiver is connected.
- Consult the dealer or an experienced radio/TV technician for help.

This device complies with Part 15 of the FCC Rules. Operation is subject to the following two conditions: (1) This device may not cause harmful interference, and (2) this device must accept any interference received, including interference that may cause undesired operation.

FCC Caution: Any changes or modifications not expressly approved by the party responsible for compliance could void the user's authority to operate this equipment.

IMPORTANT NOTE:

FCC Radiation Exposure Statement:

This equipment complies with FCC radiation exposure limits set forth for an uncontrolled environment. End users must follow the specific operating instructions for satisfying RF exposure compliance.

This transmitter must not be co-located or operating in conjunction with any other antenna or transmitter.

Canada-Industry Canada(IC)

Operation is subject to the following two conditions: 1) this device may not cause interference and 2) this device must accept any interference, including interference that may cause undesired operation of the device.

About this manual

Thank you for your purchase of this Bluetooth keyboard and mouse combo set. This topics covered in this manual are listed as following.

- ⇒ **Introduction**
 - ⇒ **Installing the Batteries**
 - ⇒ **Installing and Uninstalling the WIDCOMM Bluetooth Stack**
 - ⇒ **Setting up the Keyboard and Laser Mouse**
 - ⇒ **Using the Mouse Software**
 - ⇒ **Using the WIDCOMM Bluetooth Stack**
 - ⇒ **Troubleshooting**
-

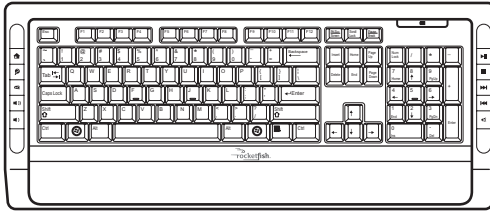
Contents

Introduction	1
Package List	1
Features	2
Product Views	3
Installing the Batteries	6
Keyboard	6
Laser Mouse	7
Installing and Uninstalling the WIDCOMM Bluetooth Stack	8
Installing the WIDCOMM Bluetooth Stack	8
Uninstalling the WIDCOMM Bluetooth Stack	12
Setting up the Keyboard and Laser Mouse	13
Automatic Pairing in Boot Mode	13
Quick Pairing in Windows	15
Pairing on WIDCOMM Bluetooth Stack	16
Using the Mouse Software	18
Installing the Bluetooth Mouse Software	18
Uninstalling the Bluetooth Mouse Software	19
Adjusting the Tilt/ Scroll Wheel Speed	19
Using the WIDCOMM Bluetooth Stack	21
Using the Stack for the First Time	21
Connecting to the other HID Devices	22
Troubleshooting	23

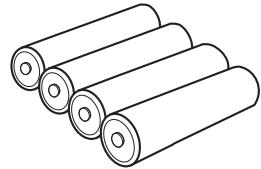
1 Introduction

1.1 Package List

Before you start using the set, check the following contents in your package. If anything is missing, contact your retailer.



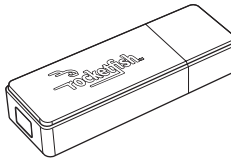
Keyboard



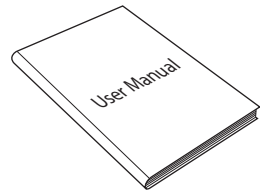
**Batteries for the
keyboard and mouse**



Laser Mouse



**USB Bluetooth
dongle**



User Manual

1.2 Features

Keyboard/ Laser Mouse

- Keyboard
 - 104-key design
 - Ten frequently used hotkeys
 - One connect button
- Laser mouse
 - Tilt/ scroll wheel
 - Three mouse buttons (Left, right, and middle buttons)
 - Four media key buttons
 - One pairing button
- Power saving mode
- Excellent performance working range up to 10 meters (line-of-sight)
- Power saving mode
- Dual color status LED indicator

USB Bluetooth Dongle

- One pairing button
- Bluetooth specification v1.0 and v2.0 compliant
- Supports both keyboard and mouse
- Supports additional Bluetooth devices

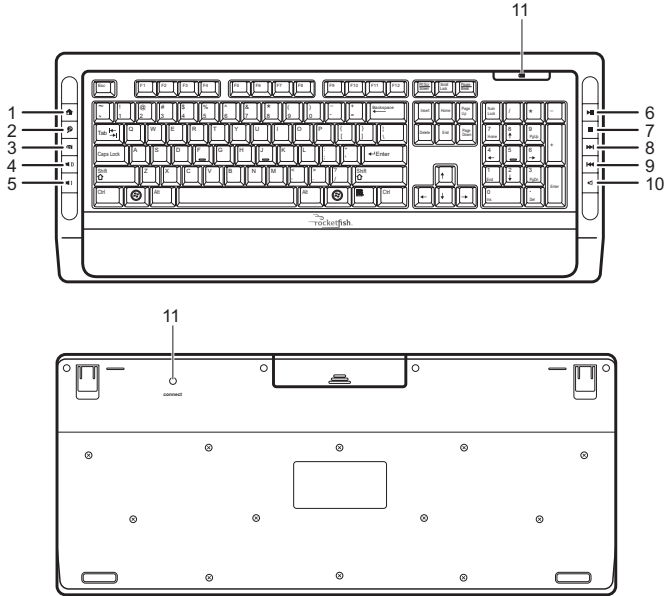
System Requirements












- Bluetooth/USB keyboard & mouse supported computer
- Microsoft Windows 2000, XP or later
- WIDCOMM Bluetooth software version 5.0
- Bluetooth Mouse software for configuring the scrolling speed

Bluetooth Keyboard and Mouse Combo Set

1.3 Product Views

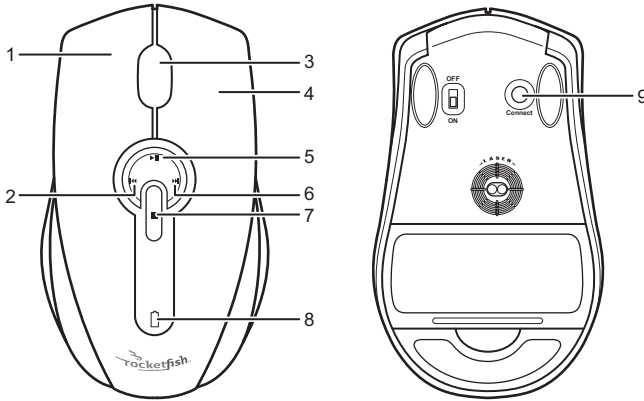
Keyboard



No	Icon	Description	No	Icon	Description
1		Left button	7		Stop button
2		Rewind button	8		Fast Forward
3		Tilt/ Scroll Wheel button	9		Rewind
4		Fast Forward button	10		Mute
5		Play/ Pause button	11		Status LED
6		Fast Forward button	12	Connect	Connect button

Bluetooth Keyboard and Mouse Combo Set

Laser Mouse



No	Description
1	Left button
2	Rewind button
3	Tilt/ Scroll Wheel button
4	Fast Forward button
5	Play/ Pause button
6	Fast Forward button
7	Stop button
8	Status LED
9	Pairing button



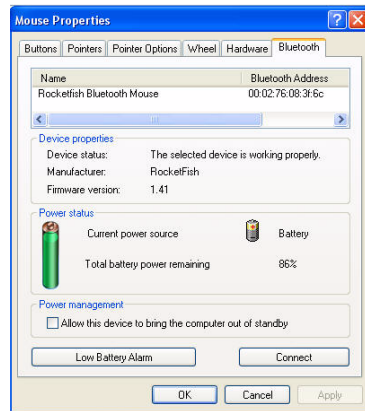
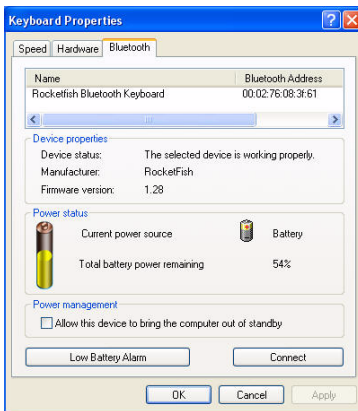
- The keyboard hotkeys and the mouse media key buttons are disabled by default. To use these hotkeys and buttons, you need to install the Bluetooth WIDCOMM stack as described in "**3 Installing the WIDCOMM Bluetooth Stack**" on page 8.
- To enable the horizontal scrolling, you need to install the Bluetooth Mouse software on your computer. See "**5.1 Installing the Bluetooth Mouse Software**" on page 18 for more information.

Bluetooth Keyboard and Mouse Combo Set

LED Status

LED	Color	Description
Keyboard/ Mouse LED	Green	Mouse is turned on, battery level normal.
	Flashing red	Low battery.
	Flashing red and green	Mouse/ Keyboard pairing.

To view more detailed information on the keyboard/ mouse battery status, go to the **Control panel > Keyboard > Bluetooth** or **Control panel > Mouse > Bluetooth**.



If you want to change the settings for low battery alarm, click the **Low Battery Alarm** button to open the following screen.



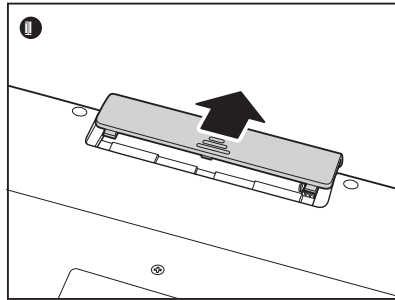
Change the settings according to your preferences.

2 Installing the Batteries

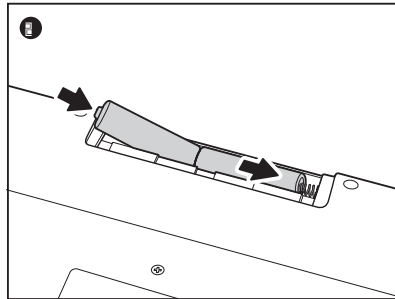
The keyboard and mouse both need two AA Alkaline batteries. Follow the steps below to install the batteries.

2.1 Keyboard

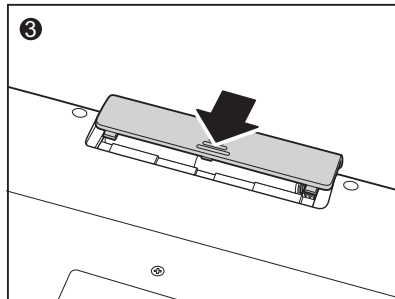
1. Remove the battery cover as shown.



2. Install two "AA" batteries while observing the polarity (+ and -) marks indicated inside the compartment.



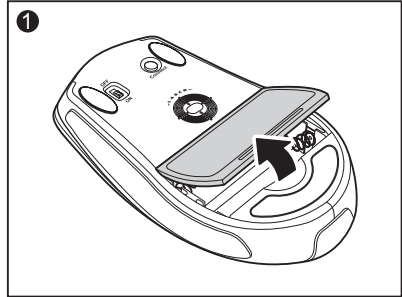
3. Replace the battery cover.



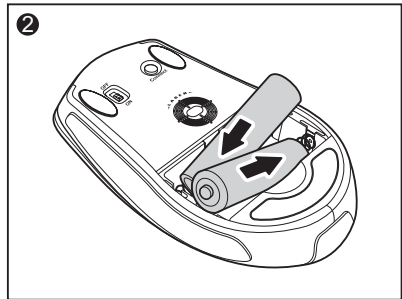
Bluetooth Keyboard and Mouse Combo Set

2.2 Laser Mouse

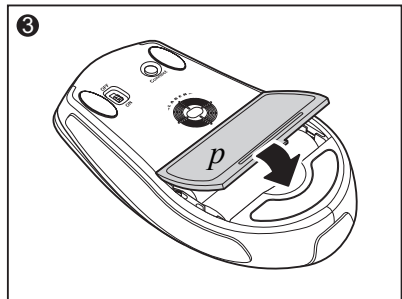
1. Press the tab to release the battery cover.



2. Install two "AA" batteries while observing the polarity (+ and -) indicated inside the housing.



3. Replace the battery cover.

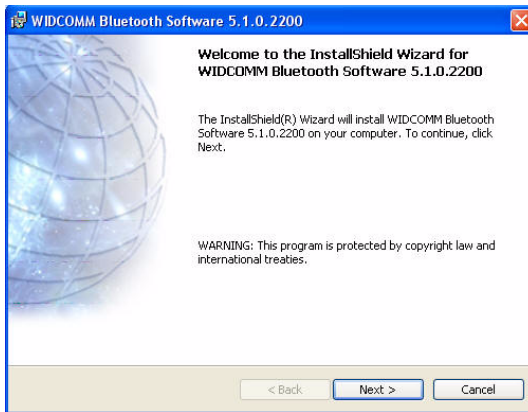


3 Installing and Uninstalling the WIDCOMM Bluetooth Stack

3.1 Installing the WIDCOMM Bluetooth Stack

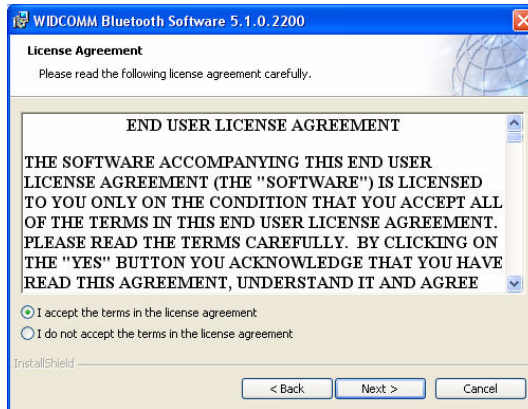
Before installing the WIDCOMM Bluetooth stack, plug the USB Bluetooth dongle into a USB port of your computer.

1. Insert the provided Installation CD in the CD ROM drive.
2. The installation stack loads automatically. If not, click the **Setup.exe** in the bin folder of the CD ROM.
3. The welcome screen introduces you to the installation process. Click **Next** to continue.

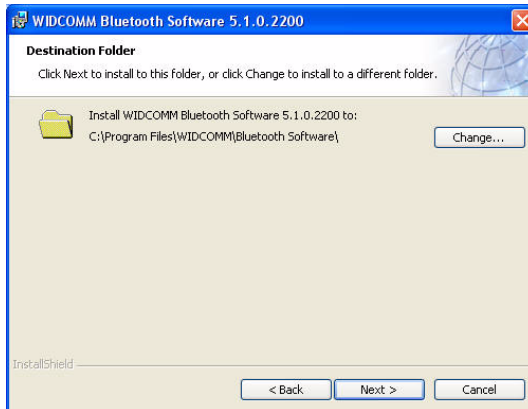


Bluetooth Keyboard and Mouse Combo Set

4. Read the agreement and select “***I accept he terms in the license agreement***”. Click **Next** to continue.

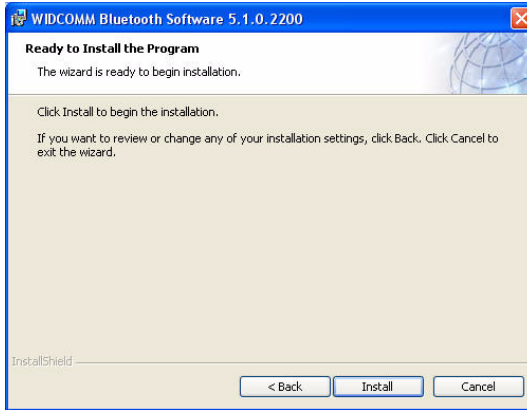


5. The program will be installed in the folder as shown. Click **Change** to install in a different location. Click **Next** to continue.



Bluetooth Keyboard and Mouse Combo Set

6. Click **Install** to start the installation. The installation may need some time to complete.



If the **“Bluetooth device not found”** message appears, plug the USB Bluetooth dongle into a USB port of your computer and click **OK**.



The **Found New Hardware Wizard** starts installing the components for the USB Bluetooth dongle.

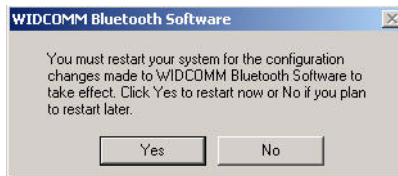
Bluetooth Keyboard and Mouse Combo Set

- The following screen appears to indicate the installation is complete.



- Remove the dongle and plug it back in, the keyboard and mouse will pair automatically. Click **Finish** to exit the installation.

The following prompt requires you to restart the computer so that the Bluetooth stack takes effect. Click **Yes** to restart your computer now or **No** to restart later. (for Windows 2000 only)



3.2 Uninstalling the WIDCOMM Bluetooth Stack

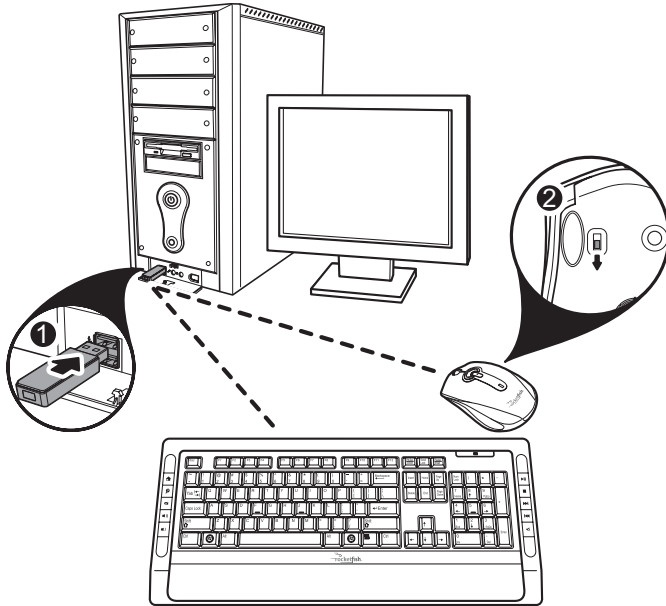
Follow the steps below to uninstall the WIDCOMM Bluetooth stack from your computer.

1. Remove the USB Bluetooth dongle.
2. Click **Start > Settings > Control Panel > Add/Remove Programs**.
3. Select **WIDCOMM Bluetooth Software** from the program list and click **Remove**.
4. A confirmation message appears. Click **Yes** to uninstall or **No** to cancel.
5. When the program has been removed, a prompt requires you to restart the computer. Click **Yes** to restart your computer now or **No** to restart later.

4 Setting up the Keyboard and Laser Mouse

4.1 Automatic Pairing in Boot Mode

Follow the steps below to enable the keyboard and mouse in boot mode.



1. Plug the USB Bluetooth dongle into one of USB ports before starting your computer.
2. Now slide the power switch of the mouse to turn the mouse on.
3. Press the button on the bottom of the USB Bluetooth dongle until the LED begins to flash once every second. This indicates the Bluetooth dongle has started to search for device to be paired.
4. The Bluetooth connection is established. Turn on the computer and use the keyboard to enter the BIOS setup.
5. Follow the on-screen instructions to enter the BIOS setup screen.

Bluetooth Keyboard and Mouse Combo Set

6. Use the keyboard/mouse to view the menu and configure the settings.

Enabling the function of USB keyboard/mouse in BIOS

If the keyboard/mouse failed to work (refer to “**7 Troubleshooting**” on page 23 for more probable conditions), check that the USB function of the keyboard/mouse has been enabled in the BIOS setup.

1. Before turning on your computer, make sure the Bluetooth connection has been established.
2. Turn on your computer and follow the on-screen instructions to enter the BIOS setup.
3. Use the cursor keys on the keyboard to navigate through the menu items and enable the USB function for USB keyboard and mouse. (In some BIOS settings, you can use the Bluetooth mouse to navigate through the items.)



Some old PC systems do not support the USB keyboard/mouse in BIOS/DOS environment.

4.2 Quick Pairing in Windows

The Bluetooth keyboard and mouse has been set to a pre-pairing mode as the factory default. For quick pairing, enable the pre-pairing mode following the steps below.

1. Plug the USB Bluetooth dongle into a USB port of your computer.

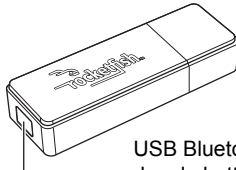


The first time you connect the keyboard or mouse to your computer, the *Found New Hardware Wizard* will automatically launch. Cancel the Wizard and follow the steps below.

2. For the mouse, press the pairing button at its bottom.

For the keyboard, press the connect button on the back of the keyboard for two seconds.

3. Press the button on the bottom of the USB Bluetooth dongle until the LED begins to flash once every second. This indicates the Bluetooth dongle has started to search for device to be paired.



USB Bluetooth
dongle button



- When pairing, the keyboard/mouse LED lights red and green in turn.
- The pairing settings will be cancelled if you press the mouse pairing button or the keyboard connect button. To reconnect the mouse or keyboard, press the USB Bluetooth dongle button again (Refer to the step3 above).

4. Press any key on the keyboard and move your mouse to ensure they are connected.



Each time you turn on your computer, the keyboard and mouse will be automatically detected.

4.3 Pairing on WIDCOMM Bluetooth Stack

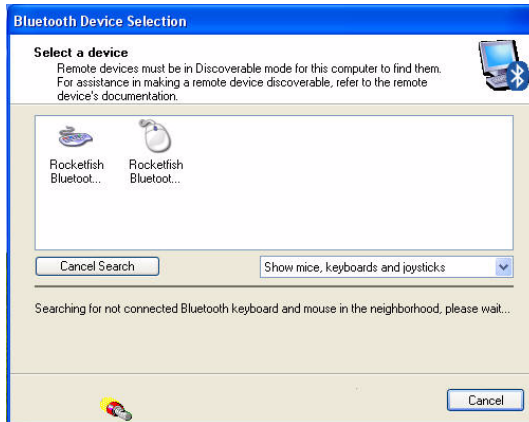
Before using the Bluetooth stack for keyboard and mouse pairing, make sure of the following:

- The WIDCOMM Bluetooth stack is installed and set up as instructed in “**3 Installing and Uninstalling the WIDCOMM Bluetooth Stack**” on page 8.
- The batteries are inserted properly and fully charges.
- The USB Bluetooth dongle is plugged into a USB port of your computer.
- The mouse is switched on.



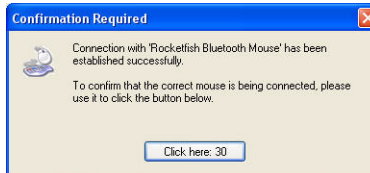
To start the Bluetooth stack for the first time, see “**6 Using the Stack for the First Time**” on page 21 for more information.

1. Press the Connect button on the mouse and keyboard to start pairing.
2. Press the USB Bluetooth dongle button until the following Human Interface Device (HID) screen appears. It starts to search for all Bluetooth devices.



Bluetooth Keyboard and Mouse Combo Set

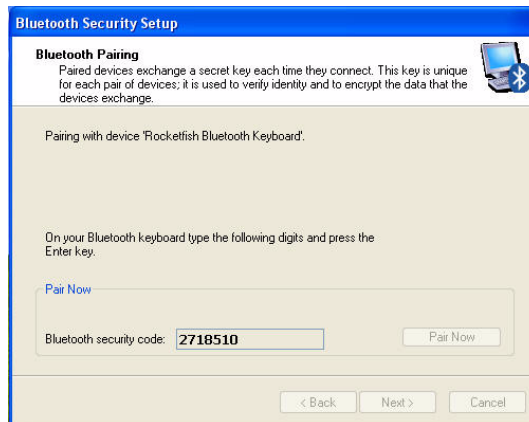
- When the mouse is connected, the following confirmation message appears. Click to confirm that the correct mouse is connected.



- When the keyboard is connected, the following screen appears. Use the paired keyboard to type the digits shown on the screen and press the Enter key. The keyboard is then connected.



The Bluetooth security code changes each time the keyboard is connected.



The keyboard/mouse will enter the power saving mode when not used for a period of the time.

5 Using the Mouse Software

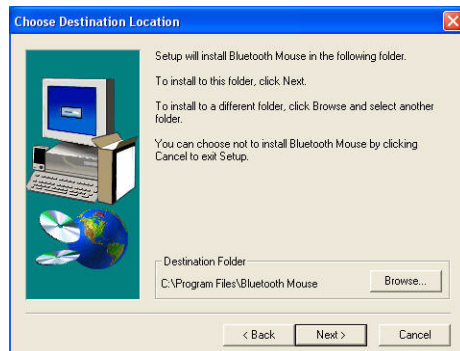
5.1 Installing the Bluetooth Mouse Software

Before installing the Bluetooth Mouse software, make sure the WIDCOMM stack has been installed on your computer. Then plug the USB Bluetooth dongle into an available USB port of your computer.

1. Insert the provided Installation CD in the CD ROM drive.
2. The software starts automatically. If not, click the **Setup.exe** in the bin folder of the CD ROM.
3. The welcome screen introduces the installation process. Click **Next** to continue.

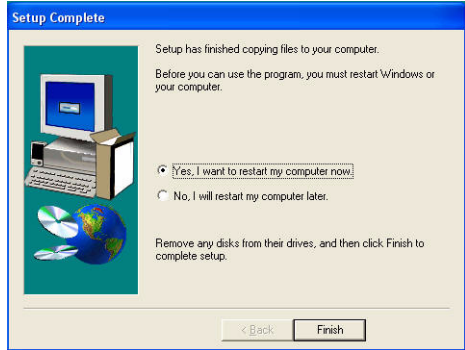


4. The setup program will install the program files into the folder as shown. You may click **Browse** to install the program files to a different location. After you choose a installation directory, click **Next**.



Bluetooth Keyboard and Mouse Combo Set

5. Once installed, you will be prompted to restart your computer before using the Bluetooth Mouse Software.



5.2 Uninstalling the Bluetooth Mouse Software

Follow the steps below to uninstall the Bluetooth Mouse software from your computer.

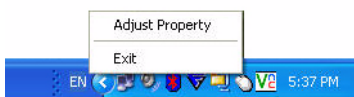
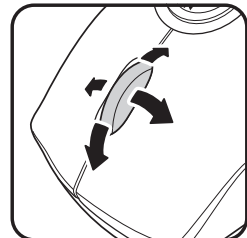
1. Remove the USB Bluetooth dongle.
2. Click **Start > Settings > Control Panel > Add/Remove Programs**.
3. Select **Bluetooth Mouse** from the program list and click **Remove**.

A confirmation message appears. Click **Yes** to uninstall or **No** to cancel.

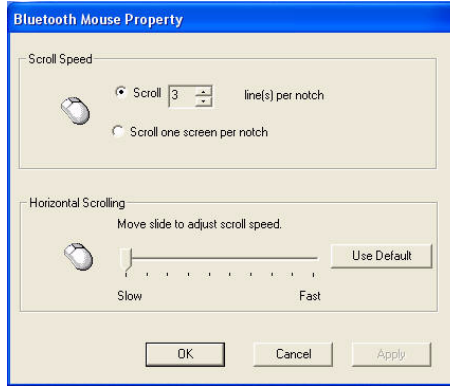
5.3 Adjusting the Tilt/ Scroll Wheel Speed

Your mouse comes with an advanced scroll wheel that enables horizontal window scrolling as well as vertical.

To adjust the scrolling wheel speed, click the Mouse icon in the system tray or right-click to view the context menu, and then click **Adjust Property**.



Bluetooth Keyboard and Mouse Combo Set



Scroll Speed

You can specify the speed at which the screen will scroll when using the scroll wheel function.

1. Select **Scroll x lines per notch** or **Scroll one screen per notch**.

Scroll x lines per notch	Select to set the number of lines to scroll when the scroll wheel is moved one notch. Specify the number of lines with the up and down arrows.
Scroll one screen per notch	Select to scroll the entire window when the scroll wheel is moved one notch (i.e. page up/down).

2. Click **OK** to have your changes take effect.

Horizontal Scrolling

To configure the speed of the tilt scroll wheel, do the following:

1. Move the slide towards Slow or Fast to adjust the scroll speed.
2. Click **Use Default** to restore the horizontal scrolling speed to its default setting.
3. Click **OK** to have your changes take effect.

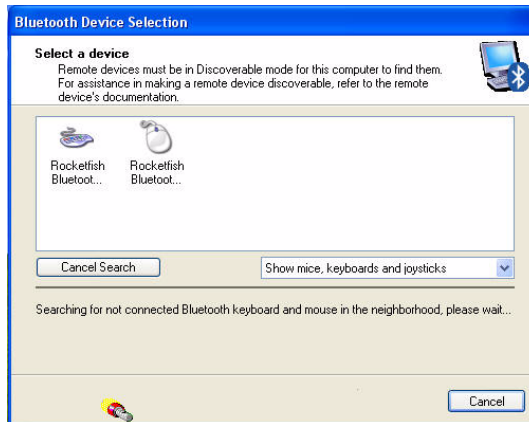
6 Using the WIDCOMM Bluetooth Stack

6.1 Using the Stack for the First Time

To start using the Bluetooth Stack, double click the Bluetooth icon in the system tray.



1. The *Initial Bluetooth Configuration Wizard* will launch. Follow the instructions on screen to complete the configuration.
2. When the Bluetooth Configuration is complete, the following HID screen appears and starts to search for Bluetooth devices.



3. Click on the HID device you want to connect with. Then follow the instructions on-screen to enable the selected device.

Bluetooth Keyboard and Mouse Combo Set

About the Bluetooth icon

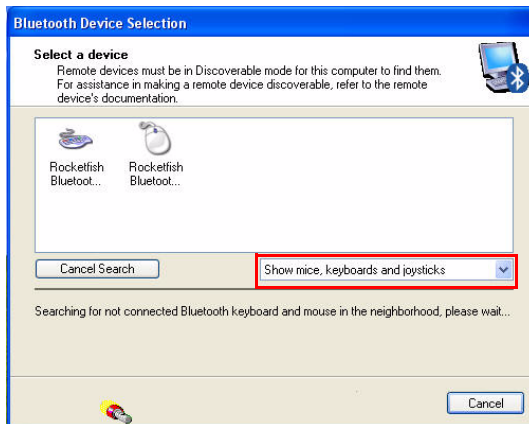
The Bluetooth icon acts as an indicator for dongle status.

1. A red icon indicates there is no dongle inserted.
2. A white icon indicates the dongle is plugged in.
3. A green icon indicates the dongle has detected the HID devices.

6.2 Connecting to the other HID Devices

Besides the mouse and keyboard, the Bluetooth Stack also allows you to connect to other Bluetooth devices.

1. Make sure the USB Bluetooth dongle has been plugged onto your computer.
2. Set the Bluetooth devices, such as printers, modems, and PDAs, you want to connect to the Bluetooth stack.
3. Press the USB Bluetooth dongle button until the following HID screen appears.
4. Select the type of devices to search for from the drop-down menu.



5. The detected devices will be displayed. Click on a device and the stack will instruct you to enable the connection.

7 Troubleshooting

If you have any problems with your Bluetooth keyboard or mouse, please check the following:

- Check the system requirements to make sure that your system is compatible.
- Check to see if the batteries in the keyboard and mouse are installed correctly. Make sure the polarity of the batteries corresponds with the polarity signs inside the keyboard and mouse battery compartments.
- When the mouse LED is lit red, it indicates battery power low. Replace them with new batteries immediately.
- Once the Bluetooth stack (see “**Installing the WIDCOMM Bluetooth Stack**” on page 8) has been installed in your computer, you can check the battery status of keyboard and mouse from **Control Panel > Keyboard > Bluetooth** or **Control Panel > Mouse > Bluetooth**.
- If the keyboard and mouse fail to work, check the USB keyboard and mouse functions in your system’s BIOS. The functions should be enabled for the normal use of keyboard and mouse. For detailed setting, refer to “**Enabling the function of USB keyboard/mouse in BIOS**” on page 14.
- If your PC system’s BIOS setup has options for the keyboard or mouse, make sure they are set to default settings. If you are not familiar with the BIOS, refer to your PC’s manual for more information.
- Only use the mouse on a clean, flat, non-slippery surface in order to ensure smooth and accurate cursor action. If you use a mouse-pad, choose a light-colored one, not a dark one, to use less battery power.

For further assistance with any other questions you may have, please contact your dealer for technical support.