

Introduction

Congratulations on your purchase of Bluetooth® Media Notebook Mouse. Its 33 feet/ 10 meter operating range of Class I Bluetooth allows seamless connection, and is perfect for media remote control with the touch of a joystick.

System Requirements

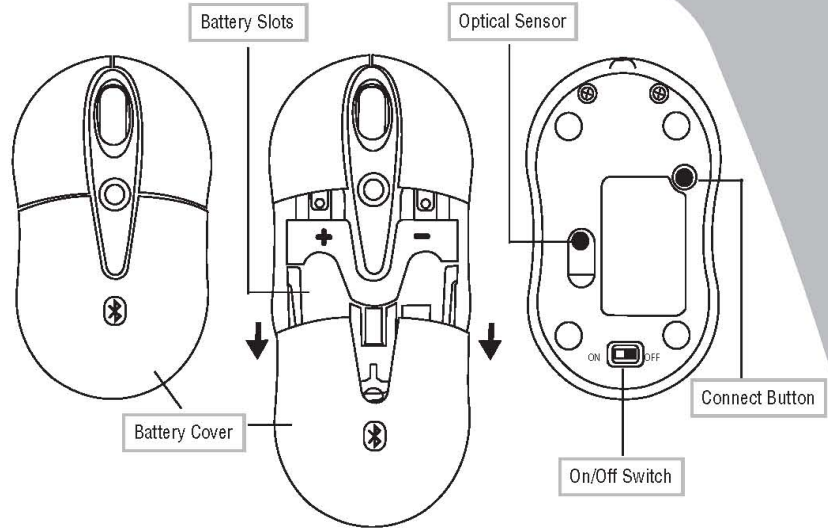
Hardware - Bluetooth-enabled notebook or desktop PC
Operating System - Windows® 2000 or XP

Installing the Batteries

- Remove the battery cover from the top of the mouse by sliding off the cover of the mouse
- Insert the supplied batteries, making sure that the positive (+) and negative (-) ends of each battery match the polarity indicators inside the battery housing

WARNINGS: WHEN REPLACING THE BATTERIES, YOU MAY USE ALKALINE OR OTHER HEAVY DUTY NIMH BATTERIES. NEVER USE AN ALKALINE WITH A NIMH BATTERY IN A DEVICE. AVOID MIXING NEW AND USED BATTERIES IN A DEVICE

- Snap the battery cover back into position
- Turn on the mouse by sliding on/off switch on the bottom of the mouse to the "on" position.



Initial Configuration

Before you can begin using Bluetooth connectivity on your computer and other Bluetooth devices, you must perform some initial setup tasks.

The Targus Bluetooth Media Notebook Mouse is designed to work with the four major software stack (protocol) standards: WIDCOMM, Toshiba, and Microsoft. Please check your computer's documentation to see which software stack your computer has. Please contact your system vendor if your system does not support one of the following Bluetooth software standards.

In order to activate the Media Mode of this Class I Bluetooth mouse, initial installation of Tilt Wheel Driver will be needed regardless of the differences of stack standards.

Tilt Wheel Driver Installation for All Software Stack (Protocol) Standards

To activate the Media Mode of your Targus Bluetooth Media Notebook Mouse, please follow the following steps:

1. Insert the Software Installation CD to your computer.
2. Initial welcome screen will prompt. Please ensure you have exit all Windows programs before running the set up. Click **Next**.
3. Choose the position you want to locate your mouse. Click **Next**.
4. Installation setup will begin. Click **Back** to review or change the current configuration. Click **Next** to begin installation.
5. The completion window will appear as the system completes the installation. Choose *Yes, I want to restart my computer now* to use the program.

Bluetooth Software: WIDCOMM

Make sure the Bluetooth radio is turned on. If necessary, check your computer's manual to determine if the radio is activated. To add the Targus mouse, proceed with the following steps:

1. Go to the Bluetooth Places icon located on your desktop or in the system tray and double click.



3. Turn your mouse on. Press the connect button until the red light sensor (at the bottom of the mouse) appears.



5. Installation setup will begin. Click **Back** to review or change the current configuration. Click **Next** to begin installation.



6. The confirmation window will appear as the system installs the drivers. Click **OK**. When this is done, you can move the cursor. Your Bluetooth Media Mouse has been successfully installed

4. The computer will search for new Bluetooth accessories. When it is finished, select the Targus Bluetooth Media Mouse for Notebook. Click **Next**.

Bluetooth Software: Toshiba

How to check your version of the Toshiba Bluetooth Stack

1. Launch the Bluetooth Manager.
2. Select the *Help* menu.
3. Select *About*.

YOUR VERSION SHOULD SAY V3.20.00 OR HIGHER. IF YOU HAVE A DIFFERENT VERSION PLEASE UPDATE IT FROM WWW.SUPPORT.TOSHIBA.COM

NOTE: TO ENSURE OPTIMAL PERFORMANCE OF YOUR BLUETOOTH PRODUCT YOU NEED TOSHIBA BLUETOOTH STACK V3.20.00 OR HIGHER. TO CHECK YOUR CURRENT VERSION:

Bluetooth Software: Toshiba (continue)

Make sure the Bluetooth radio is turned on. If necessary, check your computer's manual to determine if the radio is activated. To add the Targus mouse, proceed with the following steps:

1. Double click on the Bluetooth Manager icon in the system tray.



3. Turn your mouse on. Press the connect button until the red light sensor (at the bottom of the mouse) appears.

2. The *Add New Connection Wizard* window appears. Choose the *Express Mode* and click *Next*.

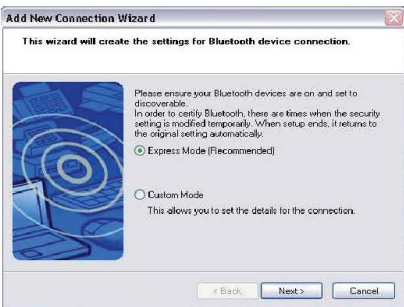


6. After installation, the *New Hardware Wizard* window appears. It will ask the user to connect to a Windows update. Choose **No**.



4. A List of devices will be shown, select the mouse and click **Next**.

5. The system will install the necessary drivers

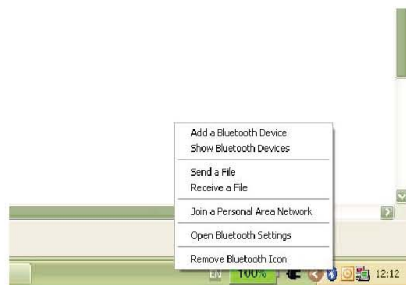


7. Follow the onscreen instructions until finished.

Bluetooth Software: Microsoft

Make sure the Bluetooth radio is turned on. If necessary, check your computer's manual to determine if the radio is activated. To add the Targus mouse, proceed with the following steps:

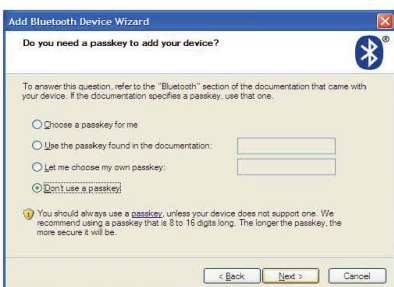
1. Double click on the Bluetooth Manager icon in the system tray.



2. Select *Add Bluetooth Device*.



3. When the *Add Bluetooth Device* window comes up, check the selection that says 'My device is set up and ready to be found,' and click **Next**.



6. A window will appear asking for a passkey. Check the option *Don't use a passkey* and click **Next**.



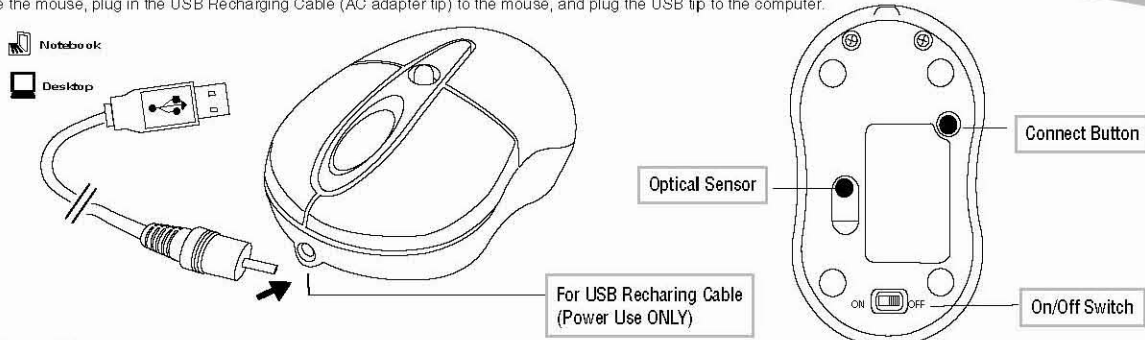
5. The software will detect a number of devices. Select the mouse and click **Next**.

4. Activate your mouse and press the **Connect** button.

7. Your mouse is now ready to use.

Mouse Power Management

- To power the mouse on and off, slide the on/off switch at the bottom of the mouse to the desired position.
- When power is on, the mouse goes into "sleep mode" after 20 minutes of inactivity. To activate the mouse, click any mouse button.
- To save battery power, turn off the mouse while travelling or while not in use.
- To recharge the mouse, plug in the USB Recharging Cable (AC adapter tip) to the mouse, and plug the USB tip to the computer.

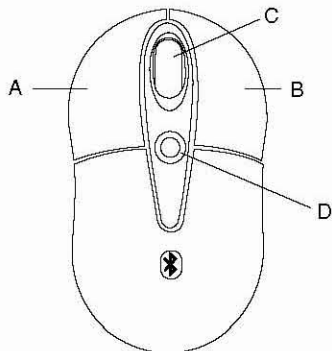


Operating Hints

For optimal performance and RF reception:

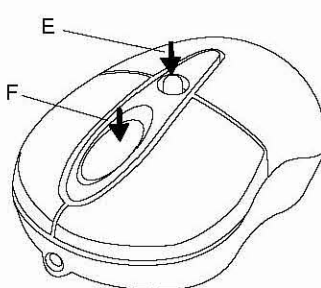
- Avoid using the mouse on a metal surface. Metals, such as iron, aluminum or copper, shield the radio frequency transmission and may slow down the mouse response time or cause the mouse to fail temporarily.
- The mouse will enter a suspend mode at the same time your computer does. To activate the mouse, press any mouse button, and blue light will light up.
- If your computer has a metal case that contains aluminum or magnesium, use the mouse to the side. The display panel may interfere with the radio frequency signal if you use the mouse directly in front of it.
- To maximize battery life, use the mouse on a white, or light colored surface. Dark surfaces cause the mouse's light emitter diode (LED) light to glow brighter, which causes the battery to discharge more rapidly.
- The mouse have 2 modes to define its commands:

In Mouse Mode



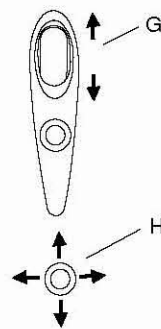
A	Left button: Left Click
B	Right Button: Right Click
C	Scroller Wheel: Scroll (mini steps) Function
D	Joystick: Scroll up, scroll down, scroll left, scroll right (continuous scrolling function). The side way scrolls are equivalent to Microsoft's tilt wheel functions

In Media Mode



E	Press Joystick once, it brings up the default media player.
F	Press down the scroller wheel, the on-screen Help Menu will show up.

G	Scroll up: to increase the audio volume. Scroll down: to decrease the audio volume.
H	Push up: Previous Track Push down: Next Track Push right: Fast Forward Push left: Rewind



Media Players Compatibility

The mouse is compatible to the following Media Players:



NOTE: DEPENDING ON THE MEDIA PLAYERS' SOFTWARE CAPABILITIES, THE MOUSE FUNCTIONALITIES CAN BE VARIED.

Action	foobar2000 v.0.83	iTunes v.6.0.1.3	Musicmatch v.10	Quintessential Player v.4.51	Real Player v.10.5	Windows Media Player v.10
Play (Audio)	X	X	X	X	X	X
Pause (Audio)		X	X	X	X	X
Stop (Audio)	X	X	X	X	X	X
Volume Up (Audio)	X	X	X	X	X	X
Volume Down (Audio)	X	X	X	X	X	X
Previous Track (Audio)	X	X	X	X	X	X
Next Track (Audio)	X	X	X	X	X	X
Fast Forward (Video)		X				X
Rewind (Video)		X				

Troubleshooting

The mouse is not working.

- Make sure that the polarity of the batteries is correct. The positive (+) and negative (-) ends of each battery must match the positive (+) and negative (-) connections in the battery housing.
- Verify that the computer is Bluetooth radio enabled.
- Verify that the device drivers are installed:
 1. Click **Start/ Settings/ Control Panel/ System/ Hardware/ Device Manager**
 2. Check under "Bluetooth Devices" that a "Targus Bluetooth Media Notebook Mouse" is installed

The mouse does not work after it is paired with my Bluetooth system.

- Paired devices are always displayed in My Bluetooth Places, even if the mouse is out of range or not powered up.
- Verify that the remote member of the pair is within range, and powered up, and then attempt the connection again.
- Verify that batteries are properly installed. Replace if necessary.

Technical Support

For technical questions, please visit:
Internet: <http://www.targus.com/support.asp>

Product Registration

Targus recommends that you register your Targus accessory shortly after purchasing it. To register your Targus accessory, go to: <http://www.targus.com/registration.asp>
You will need to provide your full name, email address, phone number, and company information (if applicable).

Warranty

Targus warrants this product to be free from defects in materials and workmanship for one year. If your Targus accessory is found to be defective within that time, we will promptly repair or replace it. This warranty does not cover accidental damage, wear and tear, or consequential or incidental loss. Under no conditions is Targus liable for loss of, or damage to a computer, nor loss of, or damage to, programs, records, or data, nor any consequential or incidental damages, even if Targus has been informed of their possibility. This warranty does not affect your statutory rights.

Regulatory Compliance

This device complies with Part 15 of the FCC Rules. Operation is subject to the following two conditions: (1) This device may not cause harmful interference, and (2) This device must accept any interference received, including interference that may cause undesired operation.

FCC Statement Tested to Comply



This equipment has been tested and found to comply with the limits for a Class B digital device, pursuant to Part 15 of the FCC Rules. These limits are designed to provide reasonable protection against harmful interference in a residential installation. This equipment generates, uses and can radiate radio frequency energy and, if not installed and used in accordance with the instructions, may cause harmful interference to radio communications. However, there is no guarantee that interference will not occur in a particular installation. If this equipment does cause harmful interference to radio or television reception, which can be determined by turning the equipment off and on, the user is encouraged to try to correct the interference by one of the following measures:

- Reorient or relocate the receiving antenna.
- Increase the separation between the equipment and receiver.
- Connect the equipment into an outlet on a circuit different from that to which the receiver is connected.
- Consult the dealer or an experienced radio/TV technician for help.

This device complies with Part 15 of the FCC Rules. Operation is subject to the following two conditions: (1) This device may not cause harmful interference, and (2) this device must accept any interference received, including interference that may cause undesired operation.

FCC Caution: Any changes or modifications not expressly approved by the party responsible for compliance could void the user's authority to operate this equipment.

IMPORTANT NOTE:

FCC Radiation Exposure Statement:

This equipment complies with FCC radiation exposure limits set forth for an uncontrolled environment. This equipment should be installed and operated with minimum distance 20cm between the radiator & your body.
This transmitter must not be collocated or operating in conjunction with any other antenna or transmitter.

Bluetooth Qualified Product

QPL#

Features and specifications are subject to change without notice. All trademarks and registered trademarks are the property of their respective owners. © 2006, Targus Group International, Inc. and Targus, Inc.

AMB02US-11 / 410-0366-001A

WIDCOMM and the WIDCOMM logo are trademarks of WIDCOMM, Inc. Bluetooth and the Bluetooth logo are trademarks owned by Bluetooth SIG, Inc., U.S.A. and licensed to WIDCOMM, Inc. Microsoft, Windows, and Outlook are registered trademarks of Microsoft Corporation. All other trademarks and registered trademarks are the property of their respective owners.