



RocketFish Desktop 2.4G Laser Mouse

User Manual

Regulatory Information

Federal Communication Commission Interference Statement

This equipment has been tested and found to comply with the limits for a Class B digital device, pursuant to Part 15 of the FCC Rules. These limits are designed to provide reasonable protection against harmful interference in a residential installation. This equipment generates, uses and can radiate radio frequency energy and, if not installed and used in accordance with the instructions, may cause harmful interference to radio communications. However, there is no guarantee that interference will not occur in a particular installation. If this equipment does cause harmful interference to radio or television reception, which can be determined by turning the equipment off and on, the user is encouraged to try to correct the interference by one of the following measures:

- Reorient or relocate the receiving antenna.
- Increase the separation between the equipment and receiver.
- Connect the equipment into an outlet on a circuit different from that to which the receiver is connected.
- Consult the dealer or an experienced radio/TV technician for help.

This device complies with Part 15 of the FCC Rules. Operation is subject to the following two conditions: (1) This device may not cause harmful interference, and (2) this device must accept any interference received, including interference that may cause undesired operation.

FCC Caution: Any changes or modifications not expressly approved by the party responsible for compliance could void the user's authority to operate this equipment.

IMPORTANT NOTE:

FCC Radiation Exposure Statement:

This equipment complies with FCC radiation exposure limits set forth for an uncontrolled environment. End users must follow the specific operating instructions for satisfying RF exposure compliance. This transmitter must not be co-located or operating in conjunction with any other antenna or transmitter.

Canada-Industry Canada(IC)

Operation is subject to the following two conditions: 1) this device may not cause interference and 2) this device must accept any interference, including interference that may cause undesired operation of the device.

Eye Safety of Laser Devices

This RocketFish Desktop 2.4G Laser Mouse is a class 1 laser product in accordance with ICE 60825-1.

Contents

Regulatory Information	i
Introduction	1
Package List	1
Features	2
Hardware	3
Installing the Batteries	5
Installing and Uninstalling Mouse Suite	6
Installing the Mouse Suite	6
Uninstalling the Mouse Suite	7
Setting up the Mouse	8
Connecting to a PC	8
Using the Laser Mouse.	10
Mouse Status LED	10
Changing the Mouse Resolution	10
User Configurable Buttons	11
Using the Mouse Suite	12
Using the Mouse Suite for the First Time	12
Configuring Mouse Buttons	13
Available Functions	14
HyperGrid	16
Hyperlink	17
Magnifier Function	17
Button Defaults	17
Slowing Down the Double-Click	18
Orientation Setup	19

RocketFish Desktop 2.4G Laser Mouse

Tilt Scroll Wheel Setup	20
Pointer Utility	23
Configuring Mouse Suite Settings	24
Troubleshooting	25

1 Introduction

Congratulations on your purchase of the RocketFish Desktop 2.4G Laser Mouse.

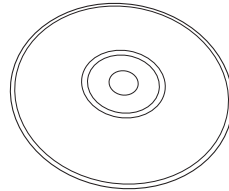
Your mouse features an innovative tilt scroll wheel that let's you scroll windows up and down, and side to side. The smooth navigation is a more efficient way to navigate your documents and web pages.

1.1 Package List

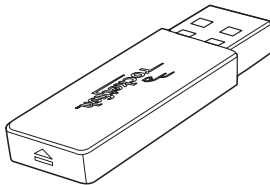
Before you start using the set, check the following contents in your package. If anything is missing, contact your retailer.



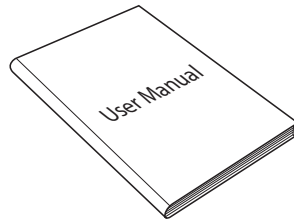
Laser Mouse



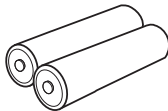
CD



(Slim) USB Receiver



User Manual



AA Batteries x 2

1.2 Features

Optical Mouse Features

- Tilt scroll wheel
- Five programmable buttons
- Resolution setting button
- Power saving mode
- LED indicator

Slim USB Receiver

System Requirements

- USB mouse supported computer
- Microsoft Windows 2000/XP/Vista or later

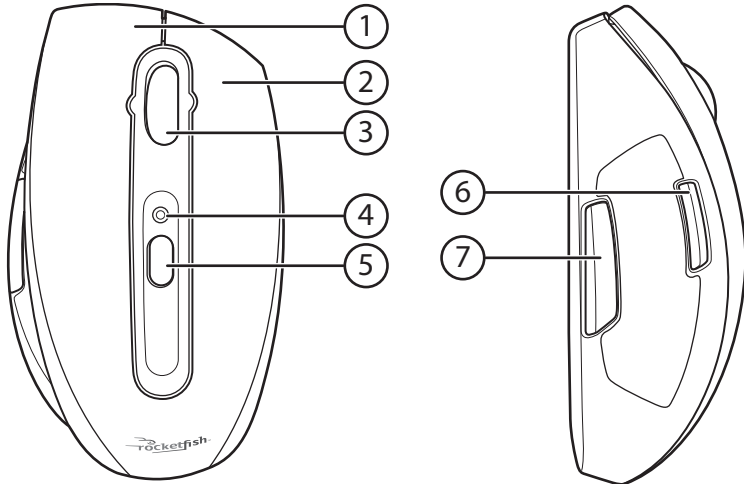
Software Features

- Windows 2000/XP/Vista compatible
- Mouse Suite for configuring and managing mouse settings

RocketFish Desktop 2.4G Laser Mouse

1.3 Hardware

Profile



Item	Description
1	Left button
2	Right button
3	Tilt/Scroll Wheel button
4	Status LED
5	Resolution button
6	Programmable Button A
7	Programmable Button B

RocketFish Desktop 2.4G Laser Mouse

LED Status

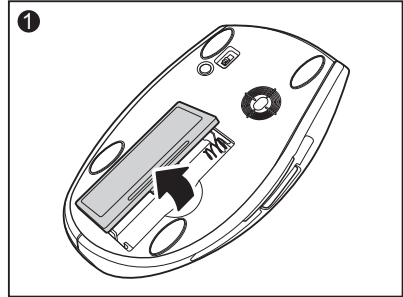
The following table lists the status of each LED, and their descriptions.

LED	Color	Description
Mouse LED	Green	Mouse is turned on, battery level normal (illuminates for 5 seconds).
	Red	Low battery (flashes for 1 minute).
USB Receiver LED	Green	Wireless connection active and operating correctly (lit when mouse is in use).
	Red	Connection in progress (flashing).

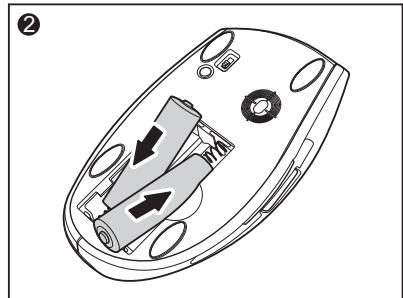
2 Installing the Batteries

The mouse needs two AA size batteries. Follow the steps below to install the batteries.

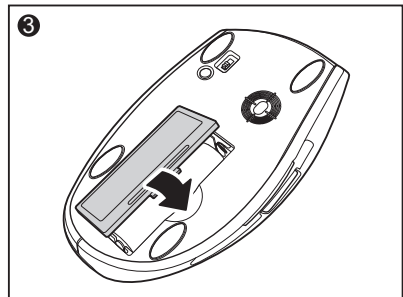
1. Push the tab to release the battery cover.



2. Install two "AA" batteries observing the polarity (+ and -) indicated inside the housing.



3. Replace the battery cover.

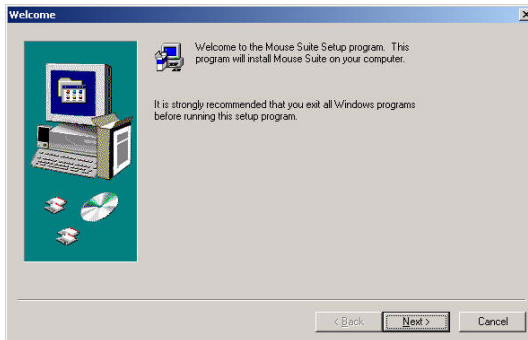


3 Installing and Uninstalling Mouse Suite

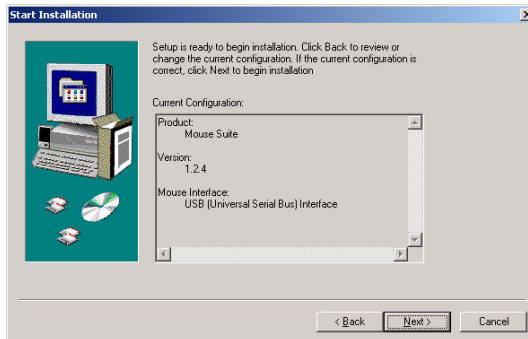
3.1 Installing the Mouse Suite

Before installing the Mouse Suite, insert the USB receiver into an available USB port of your computer.

1. Insert the provided Installation CD in the CD ROM drive.
2. The software starts automatically. If not, click the **Setup.exe** in the bin folder of the CD ROM.
3. The welcome screen introduces the installation process. Click **Next** to continue.

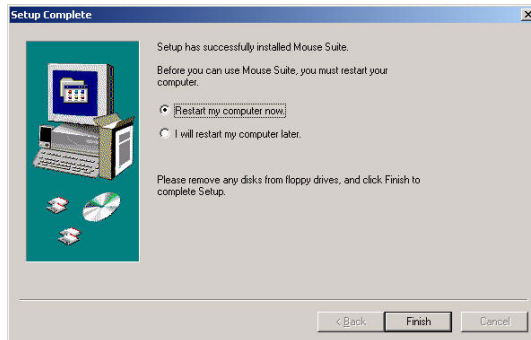


4. Review a summary of items to be installed, and then click **Next** to continue.



RocketFish Desktop 2.4G Laser Mouse

5. The program installed successfully and requires you to reboot your computer before using the Mouse Suite.



3.2 Uninstalling the Mouse Suite

Follow the steps below to uninstall the Mouse Suite from your computer.

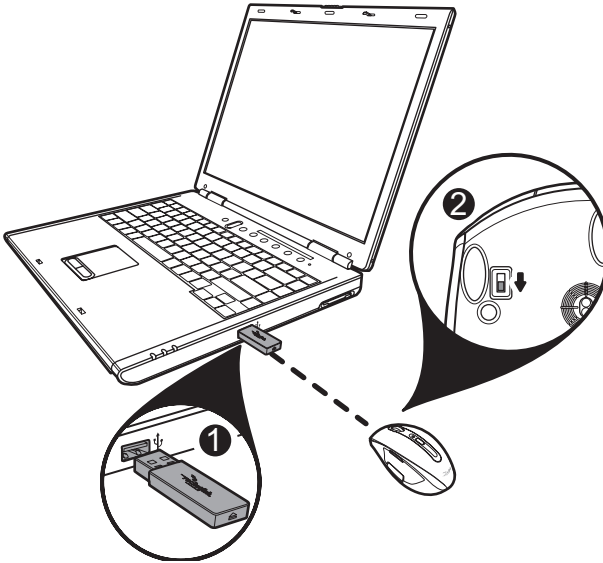
1. Remove the USB receiver.
2. Click **Start > Settings > Control Panel > Add/Remove Programs**.
3. Select **Mouse Suite** from the program list and click **Remove**.
4. The system starts to remove the program, it may take a while to uninstall.
5. When the program has been removed, a prompt requires you to restart the computer. Click **Yes** to restart your computer now or **No** to restart later.

4 Setting up the Mouse

4.1 Connecting to a PC

After installing the batteries, your mouse is ready to use.

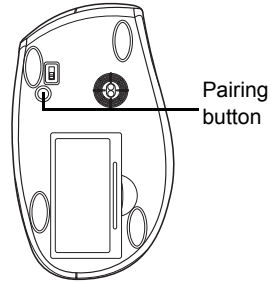
1. Insert the USB receiver into an available USB port of your computer.
2. Now slide the power switch of the mouse to turn the mouse on.



3. If this is the first time you have connected the USB receiver to your computer, the **Found New Hardware Wizard** automatically launches. Cancel the Wizard and follow the steps below.
4. Move the mouse to check it is connected.

RocketFish Desktop 2.4G Laser Mouse

5. If the mouse does not respond, press and hold the **Pairing** button as shown until the LED flashes every second. This indicates the Bluetooth dongle has started to search for device to be paired.



Each time you turn on your computer, the mouse is automatically detected.

Enabling the USB Mouse Function in BIOS

If the mouse fails to work (refer to “**7 Troubleshooting**” on page 25 for possible solutions), check that the USB function of the mouse has been enabled in the BIOS.



Some older PC systems do not support the USB keyboard/mouse in BIOS/DOS environment.

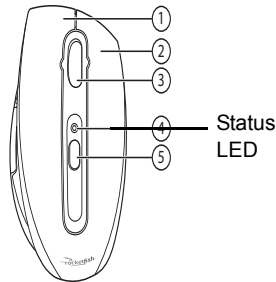
5 Using the Laser Mouse



- The scroll wheel on the mouse is automatically disabled when the mouse is pairing.
- The mouse enters a power saving mode when not in use for a period of time.

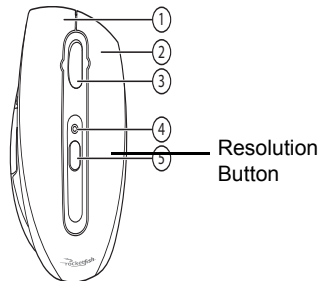
5.1 Mouse Status LED

The Laser Mouse has a battery status LED. When the battery is low, the LED flashes red for 1 minute. You should change the batteries immediately.



5.2 Changing the Mouse Resolution

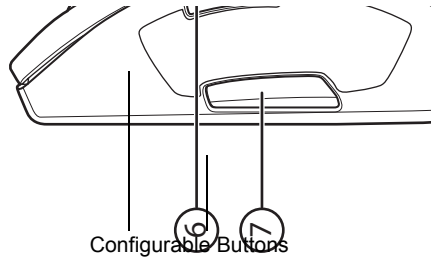
Your mouse can operate in resolutions of 800 dots per inch (dpi) or 1600 dpi. Push the **Resolution** button located in the center of top view of the mouse to toggle between resolutions. The higher resolution is more accurate but may be more difficult to control.



It is recommended to use higher resolutions for gaming, and lower resolutions for normal operation.

5.3 User Configurable Buttons

There are two mouse buttons located on the left side of the mouse. Both can be configured to perform user defined functions. For a list of available functions please see “**6.2 Configuring Mouse Buttons**” on page 13.



6 Using the Mouse Suite

6.1 Using the Mouse Suite for the First Time

To start using the Mouse Suite, double-click the Mouse icon in the system tray or right-click to view the context menu, and then click **Adjust Mouse Properties**.



If the mouse icon is not in your system tray, click **Start > Settings > Control Panel > RocketFish** to start using the software.

About the Mouse Suite icon

1. The mouse icon indicates the USB receiver and mouse are connected.
2. A red icon indicates the mouse battery is low.



3. A white icon indicates the battery is ok.



About the Mouse Suite Dialog

The main dialog is divided into six tabs. Click each tab to view related settings.

Under each tab there are three common buttons:

- Click **OK** to save your settings and close the dialog.
- Click **Cancel** to exit this dialog without saving.
- Click **Apply** to have your changes take effect without closing this dialog.

6.2 Configuring Mouse Buttons

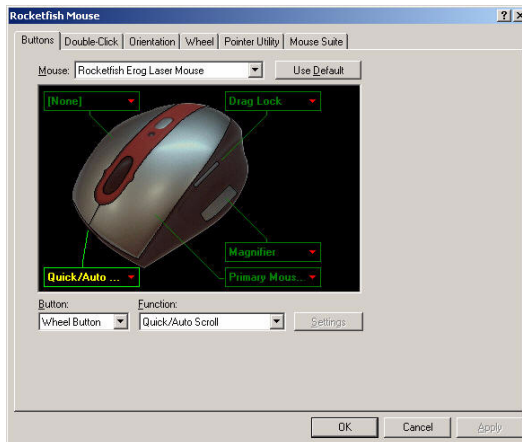
Click the **Buttons** tab to view an image of your mouse and a description of button functions.

There are two ways you can assign functions to each of the buttons:

1. Click the drop down menu next to the button you wish to customize in the button overview screen.
2. Select the function you wish to assign to the button from the list.
3. Click **Apply** to start using this function or **Cancel** to exit the Mouse Suite without making changes.

OR

1. Click the **Button** drop down menu. Select the button you wish to customize from the list.
2. Click the **Function** drop down menu. Select the function you wish to assign to the button from the list.
3. Click **Apply** to start using this function or **Cancel** to exit the Mouse Suite without making changes.



RocketFish Desktop 2.4G Laser Mouse

The following table lists the fields in this screen.

Function	Description
Mouse	Click this combo box to select your mouse from a list of compatible devices.
Use Default	Click this button to return the settings on this screen to system defaults.
Button	Click this combo box, and then select the button to configure. See “ Available Functions ” on page 14 for a list of functions and their descriptions.
Function	Click this combo box to display a list of functions to assign the button selected in the <i>Button</i> field.
Settings	This button is only available when the selected function has a configurable setting. Click this button to edit that setting.

6.3 Available Functions

You can assign one of the following functions to each button on your mouse.

Function	Description
Primary Mouse Button	Functions as the primary mouse button for selection and dragging
Context Menu	Opens the context menu
Page Down	Scrolls down the screen one page
Page Up	Scrolls up the screen one page
Next Window	Makes the next window active
Close Window	Closes the active window
Maximize Window	Maximizes the active window
Minimize Window	Minimizes the active window
Quick/Auto Scroll	Scrolls the page up and down when held and the mouse is moved

RocketFish Desktop 2.4G Laser Mouse

Function	Description
Copy (Ctrl+C)	Copies the selected item or text to the clipboard
Cut (Ctrl+X)	Cuts the selected item or text to the clipboard
Undo (Ctrl+Z)	Undo the previous action
Redo (Ctrl+Y)	Redo the previous action
My Computer	Opens the My Computer screen
Enter	Emulates pressing the Enter key
Escape	Emulates pressing the Escape key
Tab	Emulates pressing the Tab key
Shift	Emulates pressing the Shift key
Alt	Emulates pressing the Alt key
Ctrl	Emulates pressing the Ctrl key
Delete	Emulates pressing the Delete key
Backspace	Emulates pressing the Backspace key
Save	Saves the current document or file
Start Button	Opens the Windows Start menu
Web Browser	Opens your default web browser
Windows Explorer	Opens Windows Explorer
Control Panel	Opens the Control Panel
Printers	Opens the Printers folder
HyperGrid	Opens a menu with access to nine most commonly-performed actions. See “ HyperGrid ” on page 16 for details
Double-click	Performs a double-click action

RocketFish Desktop 2.4G Laser Mouse

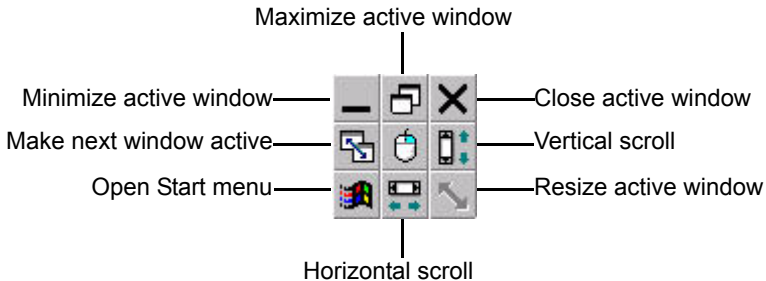
Function	Description
Drag Lock	Pressing the button will enable the drag lock feature of the primary mouse button. Pressing again will disable drag lock
Hyperlink	Opens a specified program. See “ Hyperlink ” on page 17 for details
Magnifier	Enables the Magnifier function. See “ Magnifier Function ” on page 17 for details

6.4 HyperGrid

The HyperGrid function, when assigned to one of the buttons on your mouse, opens a menu with easy access to nine of the most commonly used functions.

Click and hold the button to open the menu. Move the pointer to the function you need and release the button to select.

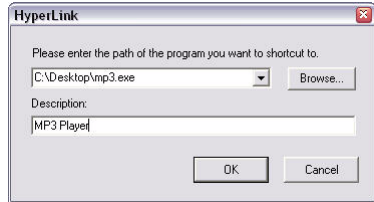
Press the button again to exit the selected function.



6.5 Hyperlink

The Hyperlink function, when assigned to one of the buttons on your mouse, opens up a specified program.

1. Assign **Hyperlink** to one of the buttons.
2. Click **Settings**.
3. Enter or browse for the program you want to open. You can add a description if you wish.
4. Click **OK** and then **Apply** on the main screen.
5. When you click the assigned button, the program you have specified will load.



6.6 Magnifier Function

The Magnifier is a unique feature of the mouse. It allows you to zoom in on a specific area of the screen for viewing in closer detail.

1. Check the **Magnifier** checkbox.
2. Assign **Magnifier** to one of the buttons.
3. Click **Apply** to have your changes take effect.

6.7 Button Defaults

Each button is assigned a default function.

Function	Description
Left Button	Primary Mouse Button
Right Button	Context Menu
Wheel Button	Quick/Auto Scroll
Programmable Button A	Scroll up the document window one page at a time / Go back to previous visited page in the browser
Programmable Button B	Scroll down the document window one page at a time / Go to next (previously visited) page in the browser

To restore these default functions at any time, click **Use Default**.

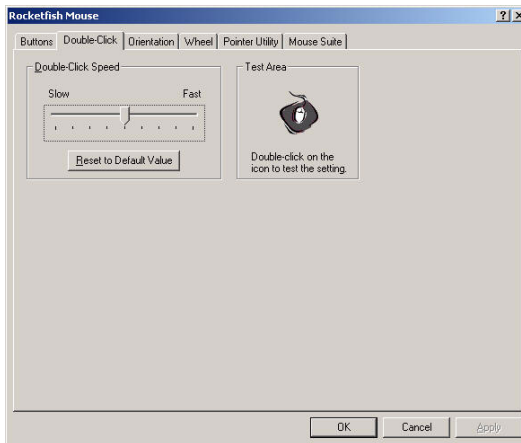
6.8 Slowing Down the Double-Click

Many items in Windows require that you click the left mouse button twice in quick succession to be activated. This is called a 'double click'.

If you experience difficulty double clicking on items, this is because the time in which you have to preform two clicks of the left mouse button is too short.

Click the **Double-Click** tab to set the delay between clicks for which a double-click is registered.

Double-click on the icon in the test area. If the icon does not animate, you will need to slow down the double click.



The following table lists the fields in this screen.

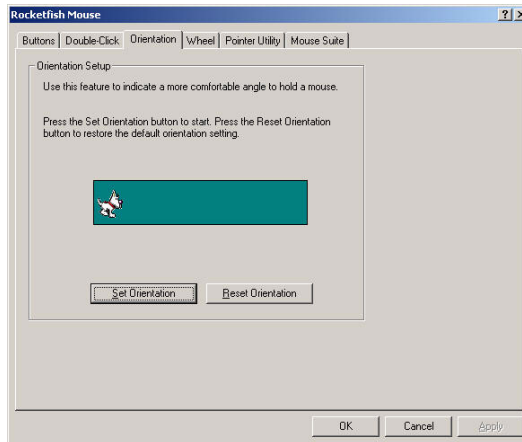
Function	Description
Double-Click Speed	Click and drag this slider towards Slow or Fast to set the double-click speed.
Reset to Default Value	Click this button to return the double-click speed to the original value.

RocketFish Desktop 2.4G Laser Mouse

Test Area	Double-click this icon to test the double-click speed. If successful the icon animates. If the icon does not animate, adjust the Double-Click Speed .
-----------	--

6.9 Orientation Setup

Click the **Orientation** tab to set the desired angle to hold your mouse.

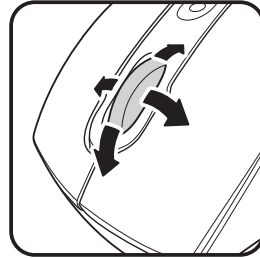


The following table lists the fields in this screen.

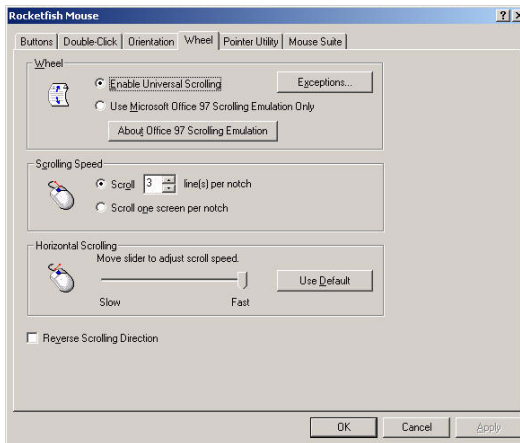
Function	Description
Set Orientation	Hold the mouse at the desired angle of use, and then click this button. Now move the mouse to your right and make the animated dog run across the screen. The mouse orientation is now matched to the angle at which you held the mouse.
Reset Orientation	Click this button to return the mouse orientation to its default setting.

6.10 Tilt Scroll Wheel Setup

Your mouse comes with an advanced scroll wheel that enables horizontal window scrolling as well as vertical.



Click the **Wheel** tab to configure how the scroll and tilt wheel on your mouse is used in the windows environment.



RocketFish Desktop 2.4G Laser Mouse

Wheel

You can choose to enable Universal Scrolling or Microsoft Office 97 emulation scrolling.

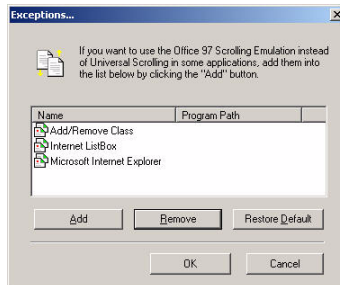
1. Select **Enable Universal Scrolling** or **Use Microsoft Office 97 Scrolling Emulation only**.

Universal Scrolling	Select to enable scrolling in <i>all</i> applications, not only those that support IntelliMouse functionality.
Microsoft Office 97 Scrolling Emulation	Select to enable scrolling in older applications that are <i>only</i> Office 97 compatible.

2. If you select universal scrolling, click **Exceptions** to configure applications in which it will not be available.
3. Click **Apply** to have your changes take effect.

Exceptions

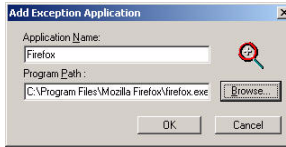
Click the **Exception** button in the **Wheel** tab to display a list of applications that use Microsoft Office 97 Scrolling Emulation regardless of whether universal scrolling is enabled.



1. Select an item in the list, and then click **Remove** to delete that item.

RocketFish Desktop 2.4G Laser Mouse

2. Click **Add**, and then click **Browse** to select the application to add to this list.



Wheel Button

You can assign a separate function to the wheel button itself, apart from the scroll function.

1. Select **Quick/Auto Scroll Control** or **Button Function**.

Quick / Auto Scroll Control	Select to enable the button to act as a scroll speed control when pressed.
Button Function	Select and choose a function from the drop down menu to assign to the wheel button.

2. Click **Apply** to have your changes take effect.

Scrolling Speed

You can specify the speed at which the window will scroll when using the scroll wheel.

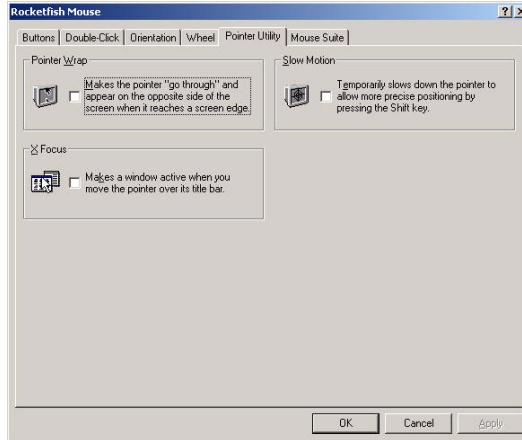
1. Select **Scroll x lines per notch** or **Scroll one screen per notch**.

Scroll x lines per notch	Select to set the number of lines to scroll when the scroll wheel is moved one notch. Specify the number of lines with the up and down arrows.
Scroll one screen per notch	Select to scroll the entire window when the scroll wheel is moved one notch (i.e. page up/down).

2. Click **Apply** to have your changes take effect.

6.11 Pointer Utility

Click the **Pointer Utility** tab to configure additional pointer functionality.

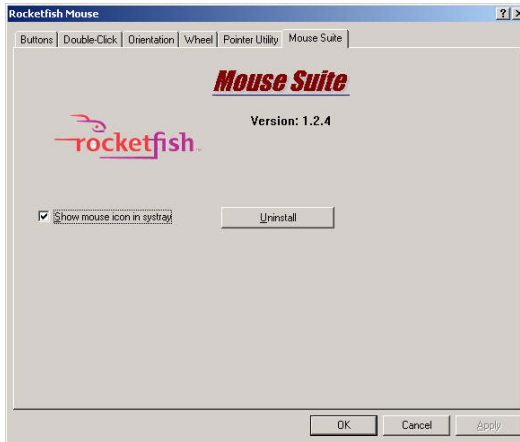


Pointer Wrap	Enable this function to allow the pointer to exit one side of the screen and appear on the opposite side.
Slow Motion	Enable this function to have the pointer slow down when the Shift key is held down.
X Focus	Enable this function to make the window under the pointer the active window.

1. Select the function(s) to apply to the pointer.
2. Click **Apply** to have your changes take effect.

6.12 Configuring Mouse Suite Settings

Click the **Mouse Suite** tab to add the Mouse Suite icon to the system tray or uninstall the Mouse Suite software.



1. Check **Show mouse icon in systray** to display the icon in the system tray.
2. Click **Apply** to have your changes take effect.

Uninstalling the Mouse Suite

1. Click **Uninstall**.
2. A confirmation message displays. Click **Yes** to uninstall or **No** to cancel.

7 Troubleshooting

If you have any problems with your mouse, please check the following:

- Check the system requirements to make sure that your system is compatible.
- Check to see if the batteries in the mouse are installed correctly. Make sure the polarity of the batteries corresponds with the polarity signs inside the mouse battery compartments.
- When the mouse LED is lit red, it indicates battery power low. Replace them with new batteries immediately.
- Once the Mouse Suite (see “**Installing the Mouse Suite**” on page 6) is installed on your computer, the battery status of your mouse is displayed by moving the mouse over the mouse icon in your system tray. See “**About the Mouse Suite icon**” on page 12.
- If the mouse fails to work, check the USB mouse function in your system’s BIOS. The function should be enabled for normal use.
- If your PC BIOS setup has mouse options, make sure they are set to default settings. If you are not familiar with the BIOS, refer to your PC’s manual for more information.
- Only use the mouse on a clean, flat, non-slippery surface in order to ensure smooth and accurate cursor action. If you use a mouse-pad, darker colors require more battery power.

For further assistance with any other questions you may have, please contact your dealer for technical support.