

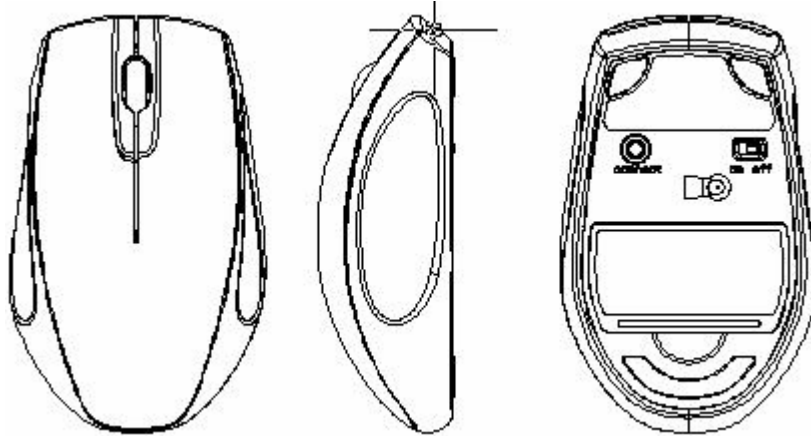
# Wireless Bluetooth Mouse User's Guide

PRIMAX ELECTRONICS LTD.

Model: MOBTEJO

Thanks for purchasing Bluetooth Optical Mouse. This creative and easy-to-use Bluetooth Mouse will bring you a whole new wireless life experience.

## Appearance Drawing



## System Requirement

- Mouse compatible with standard Microsoft Mode.
- IBM compatible PCs running Windows Operating System which supports USB devices.
- If your computer doesn't have built in Bluetooth function, please make sure that you have the Bluetooth Dongle. Bluetooth Dongle is not included in this product.

## Main Features

- Switchable CPI among 800/1000/1200/1600(some bluetooth mouse have no this function).
- Features comfortable, ergonomic design
- Built-in software solutions with Bluetooth human interface device and comply with the standard version of the Bluetooth SIG Bluetooth 2.0
- Work with Windows 98, ME, 2000, XP and Vista OS
- AA alkaline battery x2
- Frequency band: 2.402 - 2.480GHz unlicensed ISM band
- Receiving sensitivity: -75dbm (standard)
- Operation distance: 10m
- Operating temperature: 0~55°C
- Operation Humidity: 10%-85% RH at 25°C
- Storage Temperature: -20~+60°C
- Storage Humidity: 5%-95% RH at 25°C

## Precaution

! The optical mouse cannot work on a glass or mirror surface. Avoid operating this mouse on a glossy surface. Otherwise, this mouse may not operate normally.

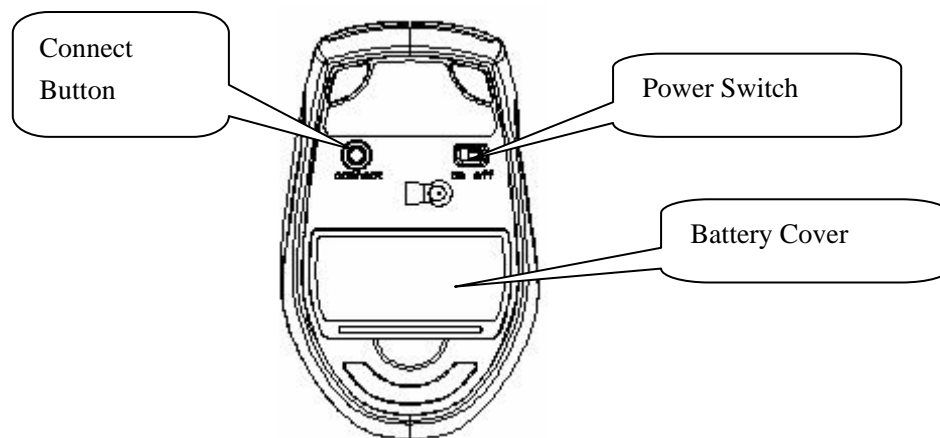
! For consideration of saving battery power, it is strongly recommended to operate an optical mouse on a bright surface with fine texture to obtain lower power consumption of the Agilest high illumination LED. A very dark surface will cause higher power consumption.

! For a better transmission distance, avoid to use this device on a metal plate or desktop because a large surface of iron, aluminum. Operating on a metal may cause the transmission distance shorter.

## Installation Guide

### Step1. Inserting Batteries

1. Remove the battery cover.
2. Inset 2Pcs AA alkaline batteries. (Please be cautious of the polarity of the batteries).
3. Close the battery cover, Let the Power Switch On, then Press the Connect Button and the mouse will be in the match state..



### Step2. Connecting the Mouse to the Dongle.

Before you install the Bluetooth Mouse, please make sure that your computer supports Bluetooth function, and finished the Bluetooth software installation. Software available like Wincomm(Recommended), IVT or the Microsoft built-in software

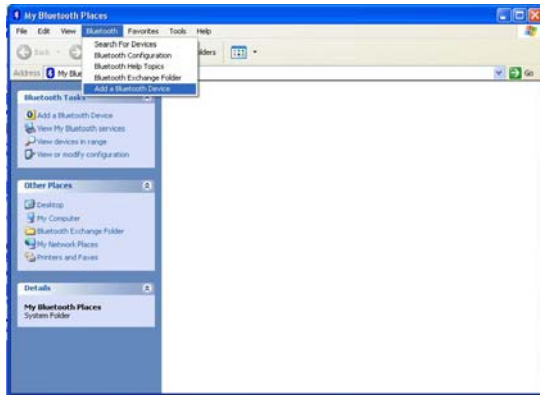
Press and hold the connect button at the bottom .Please note that the connect button is only useful during the match procedure.

## Match Procedure

A: Match on Widcomm (recommended)



1. Double click the Icon again , “My Bluetooth Place” pops up;
2. click “Bluetooth Setup---Bluetooth Setup Guide”.
3. In the Setup Guild window, click next button, wait until the system found the mouse, select “Mouse”, click “Next”. Hint for connection,
4. click “Click here”, now you can use your mouse at ease.



Note:

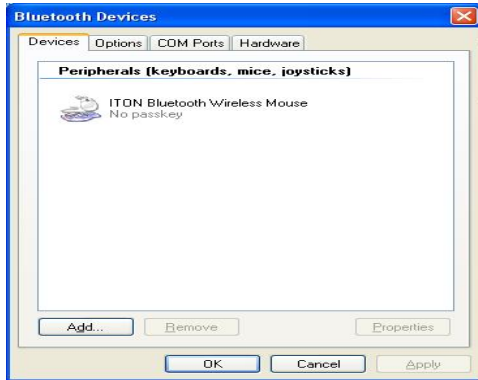
If being unused after 5 minutes, the mouse will transfer to the battery save mode. Just double click the left button will reactivate the mouse. Once connected, after you drag off the dongle or turn off the computer, double click the left button will reactivate the mouse, no need for reconnecting.

Also, if you press the Connect Button inadvertently or some abnormal disconnection occurs during using, please reconnect the mouse. If this is not available, please open the Bluetooth Dongle Software window, delete or disconnect the mouse (as the picture shows), then reconnect.



## B. Match on Microsoft built-in software

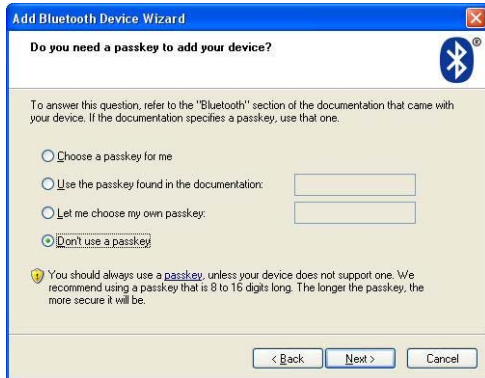
1. Make sure that the Bluetooth Function has been activated. Double click the Bluetooth Icon on the Task Bar or in the Control Panel, open the “Bluetooth Management” window, click “Add”, tick off “facility is ready for searching”, click “Next”.



2. Wait till the Mouse is found, select mouse, click “Next”.

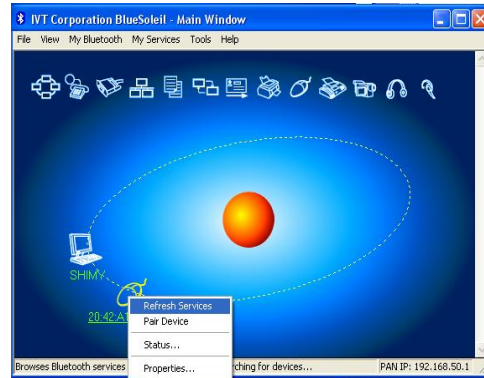
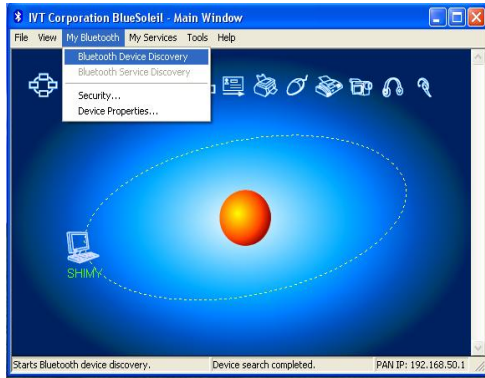


3. Select” No Password”, click “Next”, the system will install the new facility automatically.

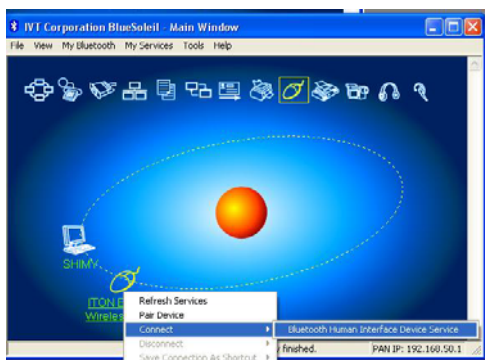


### C. Match on IVT Software

1. Make sure that the Bluetooth function is active. Double click the Bluetooth Icon, open the Management window, select “Search for Bluetooth facilities” or click the Round Ball in the middle of the window.



2. Click the Bluetooth Mouse founded, click the right button for “Refresh Service”.
3. Select the Bluetooth Mouse again, click the right button for “Connect-Bluetooth Input Service”, the system will auto install the HID facility. After that you can use your Bluetooth Mouse at ease.



#### FAQ:

If unable to connect the Bluetooth Mouse to the computer, or the Mouse work unconventionally, please try the steps below:

1. Before you install your Bluetooth Mouse, please make sure you have done the Bluetooth Dongle installation procedure, and the Bluetooth facility is turned on.
2. Press and release the “connect” button on the bottom of Bluetooth Mouse. The white LED light on the scroll wheel of mouse will be flashing fastly.
3. Make sure that the Computer is connected to the Bluetooth Mouse. If they are matched to each other before, then under the Standby State, just double click the left button of the mouse. If the Match Button is turned on, please rematch the mouse to computer. If unable to rematch, kindly delete the Mouse Icon to erase the stored info of the mouse in the computer.
4. Make sure that the mouse is within the effective range---10M.
5. Make sure that there’s no change of the Bluetooth facility. If anything changed, please kindly rematch.
6. If your Bluetooth facility is connected to other Bluetooth products, please kindly confirm that the speed of the Bluetooth facility is enough.
7. Please kindly check the batteries. If they are short of power, replace them for new ones.
8. If battery low power, the red LED light will flash at rate of 4 times/second

Note:

If being unused after 10 minutes, the mouse will transfer to the battery save mode. Just double click the left button will reactivate the mouse. Once connected, after you drag off the dongle or turn off the computer, double click the left button will reactivate the mouse, no need for

reconnecting.

Also, if you press the Connect Button inadvertently or some abnormal disconnection occurs during using, please reconnect the mouse. If this is not available, please open the Bluetooth Dongle Software window, delete or disconnect the mouse (as the picture shows), then reconnect.



## **FCC Statement**

This equipment has been tested and found to comply with the limits for a Class B digital device, pursuant to part 15 of the FCC rules. These limits are designed to provide reasonable protection against harmful interference in a residential installation. This equipment generates, uses and can radiate radio frequency energy and, if not installed and used in accordance with the instructions, may cause harmful interference to radio communications. However, there is no guarantee that interference will not occur in a particular installation. If this equipment does cause harmful interference

to radio or television reception, which can be determined by turning the equipment off and on, the user is encouraged to try to correct the interference by one or more of the following measures:

- Reorient or relocate the receiving antenna.
- Increase the separation between the equipment and receiver.
- Connect the equipment into an outlet on a circuit different from that to which the receiver is connected.
- Consult the dealer or an experienced radio/TV technician for help.

To assure continued compliance, any changes or modifications not expressly approved by the party responsible for compliance could void the user's authority to operate this equipment. (Example- use only shielded interface cables when connecting to computer or peripheral devices).

## **Radiation Exposure Statement**

This equipment complies with FCC radiation exposure limits set forth for an uncontrolled environment and it also complies with Part 15 of FCC RF Rules. Operation is subject to the following two conditions:

- 1) This device may not cause interference and
- 2) This device must accept any interference, including interference that may cause undesired operation of the device.

## **Caution!**

The manufacturer is not responsible for any radio or TV interference caused by unauthorized modifications to this equipment. Such modifications could void the user authority to operate the equipment.