

[Back to Home](#)



### Specifications

Model No.	MS05
Sensor Resolution	Laser 800/1200/1600 dpi
Connectivity	Bluetooth®
Number of Buttons	5
Compatibility	Windows® XP, Vista

### Features

- Switchable DPIs of 800/1200/1600 for different applications.
- Advanced LaserStream™ sensor for pixel precision.
- Bluetooth®

- **Welcome**
- **Functions & Indicators**
- **Setting Up**
- **Installing the iConfig™ software**
- **Customizing Settings**
- **Troubleshooting**
- **Product Disposal Information**

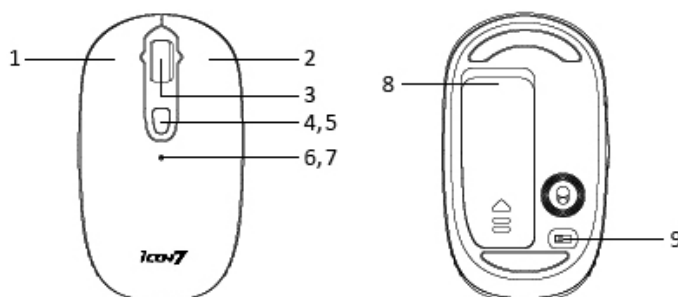
### Welcome

Congratulations on your purchase of this mouse. This product features a revolutionary design and customizable function buttons that allow you to navigate your favorite programs with ease and in comfort. Read the following sections for information and instructions on how to set up and use your mouse.

▲ **TOP**

### Functions & Indicators

See the following for descriptions of the mouse's main features and default button functions in the Mouse mode. To change these functions to better suit your preferences and needs, see "Customizing Settings" for details.



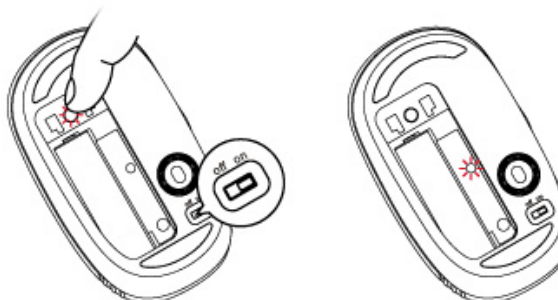
No.	Name	Function
1	Left Button	Press to activate the left button function
2	Right Button	Press to activate the right button function
3	Middle Button / Scroll Wheel	Press to activate the middle button function, and move to scroll up, down, left and right (Vista compatible).
4	Top Button	1. Holding for 3 sec. for DPI Setting switch. 2. Single Click for Application Switch. 3. Double Click for Flip 3D.
5	DPI Indicator	Blinking Orange: 800 dpi Orange: 1200 dpi Blue: 1600 dpi
6	Power LED	Orange: Battery level normal Orange blinking slowly: Battery level running low Orange blinking rapidly: Battery level critically low
7	Connection LED	1. Single flashing blue: in pairing mode 2. double flashing blue: in reconnecting with paired computer
8	Pairing Button	Press to activate Bluetooth® pairing mode
9	Power Switch	

▲ **TOP**

### Setting Up


### **Bluetooth® Pairing**

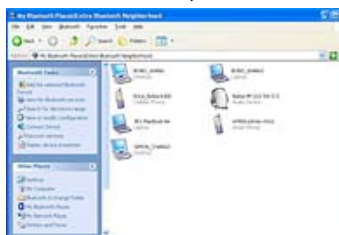
1. In order to connect with a computer that was not paired with S450 before.  
Turn on the mouse power, and press the button to enter Bluetooth® pairing mode. The connection LED starts flashing blue. If light does not flash blue or turns off after flashing, repeat these steps to try pairing again.



2. Follow the connection instructions on your computer as described below.  
Light stops flashing blue when paired.

### **Widcomm®**

1. Double-click Bluetooth® icon  located on your desktop or Windows® task bar
2. Click Bluetooth® Setup Wizard



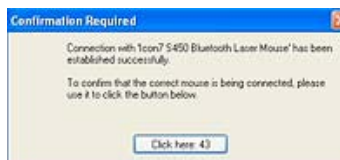
3. Press the **Pairing Button** on S450 mouse. The **connection LED** starts flashing blue.
4. On your computer, select **I want to find a specific Bluetooth Device and config how this computer will use its services** and click **Next**.



5. On the **Bluetooth Device Selection** screen, double-click **Icon7 S450 Bluetooth Laser Mouse**.



6. Using your S450 mouse to click to confirm selection of the mouse, then the flashing connection LED on S450 mouse goes off.




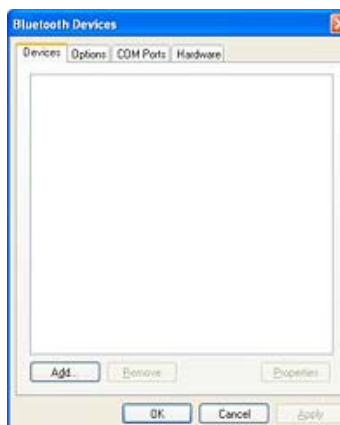
7. Select **Icon7 S450 Bluetooth Laser Mouse** on the **Bluetooth Device Selection** screen and click **Next**. Wait for your computer screen to display a message that your S450 mouse is ready for use.

### Toshiba®

1. Double-click Bluetooth Settings icon located at the bottom of the screen, and then click **New Connection**.
2. Select **Express Mode** and click **Next**.
3. Press the **Pairing Button** on S450 mouse. The **connection LED** starts flashing blue.
4. On your computer, when a screen appears asking you to select a device, click **Refresh**.
5. Select **Express** and click **Next**.
6. If a screen appears asking for a passkey, click **OK**.
7. When the **Bluetooth Settings** screen appears, click **OK**.
8. Select **Icon7 S450 Bluetooth Laser Mouse** on your computer screen, and then click **Next**.
9. Follow the onscreen instructions to finish connecting. Click **Finish**.

### Microsoft®

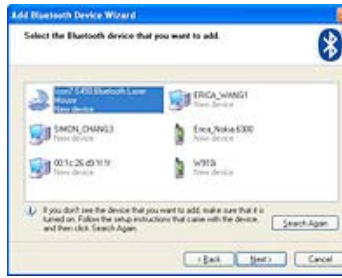
1. Double-click Bluetooth Devices  located at the bottom of the screen. Click **Add Bluetooth Device**.



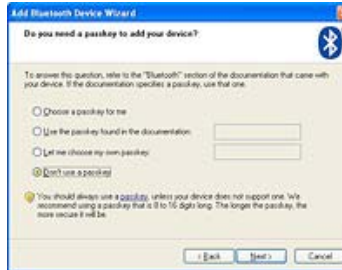
2. Press the **Pairing Button** on S450 mouse. The **connection LED** starts flashing blue.
3. Select **My device is set up and ready to be found** and click **Next**.



4. Select **Icon7 S450 Bluetooth Laser Mouse** on your computer screen, and then click **Next**.



5. Click **Finish**.



## Mac®

1. Click **System Preferences**, then click **Bluetooth**.



2. Click **Set Up New Devices**.



3. Click **Continue**.



4. Press the **Pairing Button** on S450 mouse. The **connection LED** starts flashing blue.
5. Select **Mouse** from the device list, and click **Continue**.



6. Select **Icon7 S450 Bluetooth Laser Mouse** on your computer screen, and then click **Continue**.



7. On the **Conclusion** screen, click **Quit**.



### **Bluetooth® Reconnecting**

S450 will automatically pair with the last connected computer upon power ON. In reconnecting the computer, the connection LED does double-flashing blue. S450 can totally pair with two computers, but connect with only one computer at a time.

▲ **TOP**

### **Installing the iConfig™ software**

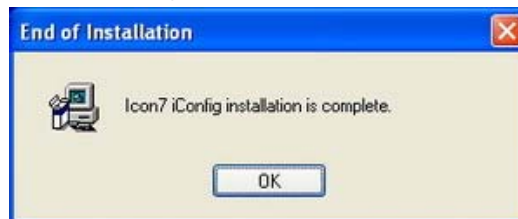
1. Make sure S450 mouse was successfully paired with your computer.
2. Insert the supplied software CD into your CD-ROM drive. The driver and software installation program should load automatically. If it does not, click **Start > Run**, enter the path of your CD-ROM drive (D: for example) and browse for the **I7setup.exe** file. Double-click the file to load.



3. Click **Next** to begin installation.



4. Click **OK** to complete the installation.



[▲ TOP](#)

## Customizing Settings

You can select functions for each button, set scroll speed, mouse speed and configure other advanced settings through the iConfig™ software.

### Launching the iConfig™ Software

You can open the iConfig™ software in two different ways:

- Double-click the **Icon7 iConfig** icon in the taskbar.
- Click **Start > Settings > Control Panel > Icon7 iConfig** or **Start > Settings > Control Panel > Mouse Property**.

### Assigning Button Functions

To assign a function to a button, do the following:

- Click the drop down menu and select the function you wish to assign to the button.
- Click **Apply** to save and apply any changes.

See the following table for all available functions, and to which buttons they can be assigned.

Function	Left	Right	Middle	Side
None	x	x	x	x
Primary Mouse Button	default	x	x	
Context Menu / Alternate	x	default	x	

Middle Mouse Button	x	x	default	x
Double-Click	x	x	x	x
Maximize Window	x	x	x	x
Minimize Window	x	x	x	x
My Computer	x	x	x	x
Control Panel	x	x	x	x
Start Button	x	x	x	x
Internet Explorer				x
Page Forward(Alt+Right)				x
Page Backward(Alt+Left)				default
IE7 QuickTab(Ctrl+Q)	x	x	x	x
Save(Ctrl+S)	x	x	x	x
Copy(Ctrl+C)	x	x	x	x
Cut(Ctrl+X)	x	x	x	x
Paste(Ctrl+V)	x	x	x	x
Undo(Ctrl+Z)	x	x	x	x
Internet Explorer				x
Play&Pause				x
Volume Up				x
Volume Down				x
Previous Track				x
Next Track				x
Launch program	x	x	x	x
FastFind™	x	x	x	x
Application Switch(Alt+Tab)	x	x	x	x
Vista Flip-3D(Windows+Tab)	x	x	x	x

### Adjusting the Scroll Speed

1. The **Vertical Scroll** speed is the same as the system setting as configured in **Mouse Property**.
2. Move the **Horizontal** slider to the right to increase horizontal scrolling speed, or to the left to decrease horizontal scrolling speed.
3. Click **Apply** to save and apply all changes.

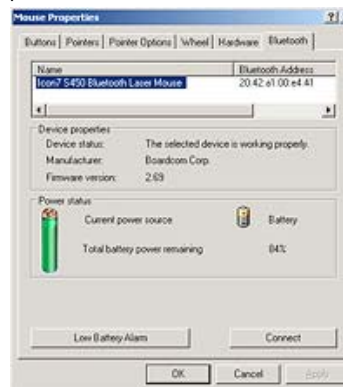
### Configuring Advanced Settings

Click **Advanced** to view the advanced settings screen.

The advanced features include **Slow Motion**, **Pointer Wrap**, and **Orientation Setup**.

### Battery Status (Widcomm®)

Open the **Bluetooth** tab in **Mouse Property** to check the remaining power of S450 mouse.



### Uninstalling the iConfig™ Software

1. Click **Control Panel**.
2. Double-click **Add or Remove Programs**.



3. Locate the **iConfig™** program in the program list.
4. Click **Remove**.
5. A confirmation message will appear. Click **Yes** to uninstall or **No** to cancel.

▲ TOP

---

## Troubleshooting

If you have any problems with your mouse, please check the following:

- Check the system requirements to make sure that your system is compatible.
- Check to see if the USB connector is securely connected to your PC via a USB port. A loose connection may cause the mouse to malfunction.
- If the mouse fails to work, check the USB mouse function in your system's BIOS. The function should be enabled for normal use.
- If your PC BIOS setup has mouse options, make sure they are set to default settings. If you are not familiar with the BIOS, refer to your PC's manual for more information.
- Only use the mouse on a clean, flat, non-slippery surface in order to ensure smooth and accurate cursor action.

For further assistance with any other questions you may have, please contact your dealer for technical support.

▲ TOP

---

## Product Disposal Information

"This symbol on the product or in the instructions means that your electrical and electronic equipment should be disposed at the end of its life separately from your household waste. There are separate collection systems for recycling in the EU. For more information, please contact the local authority or your retailer where you purchased the product. "



▲ TOP

