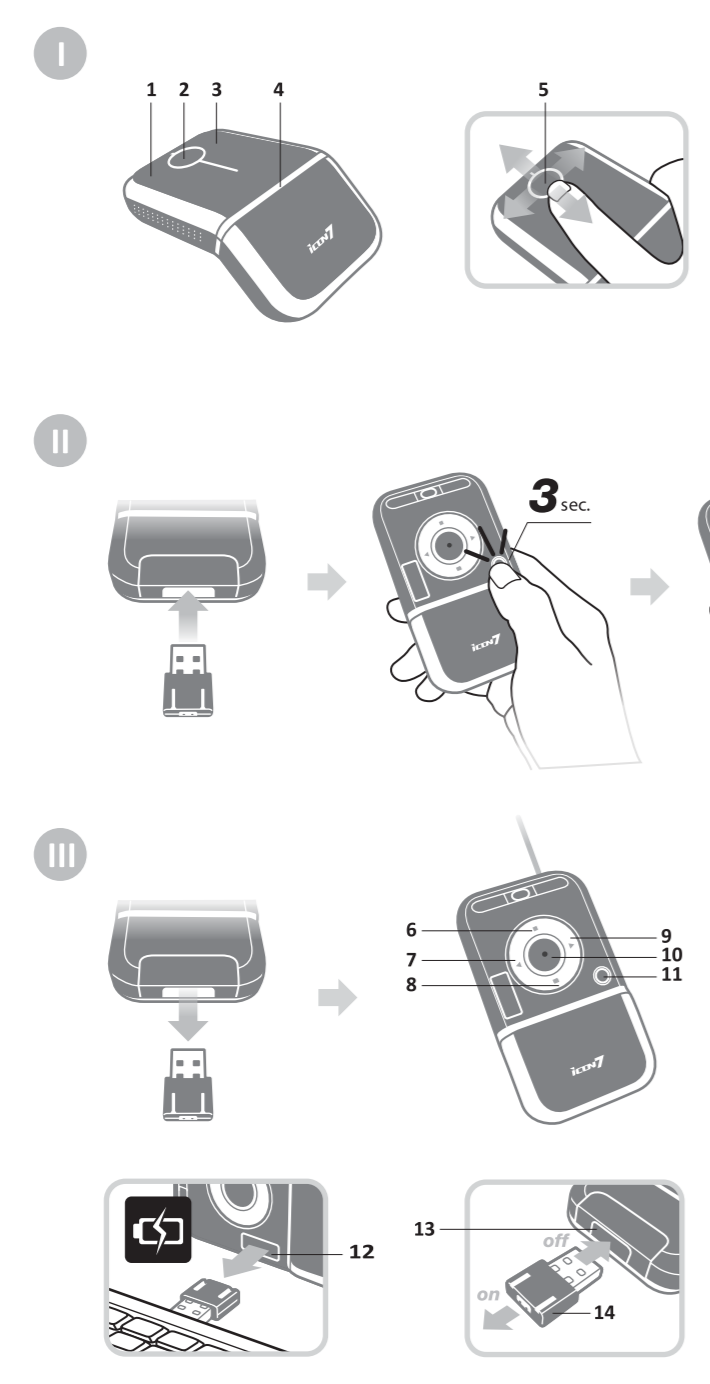


PRINTING INFO 展開圖

File Name	77TEVINC_Nov-07-2008v2_outline
Project	T3000 Package
Client	Icon7 Inc
Contact Person	Joyce Tang
Contact Number	+886 2 87975000 ext.51
Document type	Illustrator CS3
Color	Black+Pantone 165C
Material	白銅 350p
Finish	霧拔 貼背膠



SmartTwist™ Evolution
Revolutionary rotation-mechanism design transforms the arch-shape mouse into a flat and comfortable presentation controller.



- | | | |
|---|---|--|
| <p>EN</p> <ol style="list-style-type: none"> 1. Left Button 2. Middle button 3. Right Button 4. Power LED 5. Power LED 6. Black screen and resume 7. Previous slide 8. Application switch 9. Next slide 10. Laser Pointer 11. Start Slide Show 12. PowerTag™ slot 13. Power Switch 14. USB Receiver <p>SI</p> <ol style="list-style-type: none"> 1. Botón secundario 2. Botón principal 3. Botón gumb 4. LED encendido 5. Botón principal 6. Borrar pantalla y continuar 7. Diapositiva anterior 8. Cambiar de aplicación 9. Diapositiva siguiente 10. puntero laser 11. Iniciar presentación 12. Ranura PowerTag™ 13. Conmutador de alimentación 14. Receptor USB <p>DE</p> <ol style="list-style-type: none"> 1. Linke Maustaste 2. Mittlere Maustaste 3. Rechte Maustaste 4. Power LED 5. Power LED 6. Orange: Batterielevel normal 7. Orange: Batterielevel niedrig 8. Orange: Batterielevel sehr niedrig 9. Orange: Batterielevel kritisch 10. Orange: Batterielevel kritisch 11. Orange: Batterielevel kritisch 12. Orange: Batterielevel kritisch 13. Orange: Batterielevel kritisch 14. Orange: Batterielevel kritisch | <p>PL</p> <ol style="list-style-type: none"> 1. Lewy przycisk 2. Środkowy przycisk 3. Prawy przycisk 4. Wskaźnik słabej baterii 5. Wskaźnik słabej baterii 6. Czarny ekran i wznowienie pracy 7. Przycisk poprzedniej slajdu 8. Przycisk następnego slajdu 9. Wskaźnik lasera 10. Wskaźnik laserowy 11. Przycisk rozpoczęcia slajdów 12. Gniazdo PowerTag™ 13. Wtyczka zasilania 14. USB odbiornik <p>SK</p> <ol style="list-style-type: none"> 1. Ľavé tlačidlo 2. Stredné tlačidlo 3. Práve tlačidlo 4. Indikátor naspätia 5. Indikátor naspätia 6. Oranžová biela rúra: Naspätie batérie je normálne 7. Oranžová biela rúra: Naspätie batérie je nízke 8. Oranžová biela rúra: Naspätie batérie je kriticky nízke 9. Oranžová biela rúra: Naspätie batérie je kriticky nízke 10. Oranžová biela rúra: Naspätie batérie je kriticky nízke 11. Oranžová biela rúra: Naspätie batérie je kriticky nízke 12. Oranžová biela rúra: Naspätie batérie je kriticky nízke 13. Oranžová biela rúra: Naspätie batérie je kriticky nízke 14. Oranžová biela rúra: Naspätie batérie je kriticky nízke <p>CZ</p> <ol style="list-style-type: none"> 1. Levé tlačítko 2. Pro střední tlačítko 3. Práve tlačítko 4. Indikátor naspätia 5. Indikátor naspätia 6. Oranžová biela rúra: Naspätie batérie je normálne 7. Oranžová biela rúra: Naspätie batérie je nízke 8. Oranžová biela rúra: Naspätie batérie je kriticky nízke 9. Oranžová biela rúra: Naspätie batérie je kriticky nízke 10. Oranžová biela rúra: Naspätie batérie je kriticky nízke 11. Oranžová biela rúra: Naspätie batérie je kriticky nízke 12. Oranžová biela rúra: Naspätie batérie je kriticky nízke 13. Oranžová biela rúra: Naspätie batérie je kriticky nízke 14. Oranžová biela rúra: Naspätie batérie je kriticky nízke | <p>HU</p> <ol style="list-style-type: none"> 1. Bal gomb 2. Középső gomb 3. Jobb gomb 4. Kibaszott állapot jelző LED 5. Kibaszott állapot jelző LED 6. Fekete képernyő és folytatás 7. Előző dia 8. Következő dia 9. Képernyő elrejtése 10. Képernyő elrejtése 11. Előadás megkezdése 12. PowerTag™ csatlakozó 13. Tápellátás dugója 14. USB vevőegység <p>RU</p> <ol style="list-style-type: none"> 1. Левая кнопка 2. Средняя кнопка 3. Правая кнопка 4. Индикатор питания 5. Индикатор питания 6. Черный экран и возобновление работы 7. Предыдущий слайд 8. Следующий слайд 9. Переключение приложений 10. Лазерный указатель 11. Запуск слайд-шоу 12. Разъем PowerTag™ 13. Выключатель питания 14. USB-приемник <p>RO</p> <ol style="list-style-type: none"> 1. Buton stânga 2. Buton din mijloc 3. Buton dreapta 4. LED alimentare 5. LED alimentare 6. Ecran negru și revenirea la funcționare 7. Diapozitivă anterioară 8. Diapozitivă următoare 9. Comutare aplicație 10. Indicator laser 11. Pornire expunere de diapozitive 12. Slot PowerTag™ 13. Comutator de alimentare 14. Receptor USB <p>FR</p> <ol style="list-style-type: none"> 1. Bouton de gauche 2. Bouton du milieu 3. Bouton de droite 4. Voyant DEL de mise sous tension 5. Voyant DEL de mise sous tension 6. Orange: Niveau des piles normal 7. Orange: Niveau des piles normal 8. Orange: Niveau des piles normal 9. Orange: Niveau des piles normal 10. Orange: Niveau des piles normal 11. Orange: Niveau des piles normal 12. Orange: Niveau des piles normal 13. Orange: Niveau des piles normal 14. Orange: Niveau des piles normal <p>BP</p> <ol style="list-style-type: none"> 1. Botão esquerdo 2. Botão do meio 3. Botão direito 4. LED de funcionamento 5. LED de funcionamento 6. Laranja: Nível normal das pilhas 7. Laranja: Nível normal das pilhas 8. Laranja: Nível normal das pilhas 9. Laranja: Nível normal das pilhas 10. Laranja: Nível normal das pilhas 11. Laranja: Nível normal das pilhas 12. Laranja: Nível normal das pilhas 13. Laranja: Nível normal das pilhas 14. Laranja: Nível normal das pilhas |
|---|---|--|

EN To view the complete User's Manual and/or to install the driver, please refer to either the CD-ROM enclosed in the package, or go online to: www.icon7.com/support.aspx

PL W celu wyświetlenia całego podręcznika użytkownika (lub instalacji sterownika należy odszukać w opakowaniu dysk CD-ROM lub przejść online pod adres: www.icon7.com/support.aspx

HU A teljes felhasználói kézikönyv megtekintéséhez és/vagy az illesztőprogram telepítéséhez tekintse meg a csomagban mellékelt CD-ROM-t, vagy látogassa meg a weboldalt: www.icon7.com/support.aspx

SP Para visualizar el Manual de usuario completo y/o instalar el controlador, consulte el CD-ROM incluido en el embalaje o diríjase a: www.icon7.com/support.aspx

CZ Pro zobrazení celého uživatelského příručky a/nebo pro instalaci ovladače najdete na disku CD-ROM přiloženém v krabici nebo online na: www.icon7.com/support.aspx

RO Pentru a vedea Manualul de utilizare complet și/sau pentru a instala driverul, consultați CD-ROM-ul inclus în pachet sau accesați online: www.icon7.com/support.aspx

SI Za ogled celotnega Priročnika za uporabo in/ali namestitve gonilnika, prosimo uporabite priloženi CD, ali pojdite na: www.icon7.com/support.aspx

SK Pre prezretie kompletneho návodu na obsluhu a/alebo inštaláciu ovládača si poďte buď CD-ROM priložený v balení, alebo navštívte internetovú stránku: www.icon7.com/support.aspx

RU Для просмотра полного руководства пользователя и (или) установки драйвера см. либо входящий в комплект поставки компакт-диск, либо перейдите на веб-сайт: www.icon7.com/support.aspx

DE Um die gesamte Bedienungsanleitung zu lesen und/oder den Treiber zu installieren, sehen Sie bitte auf der mitgelieferten CD-ROM nach oder im Internet unter: www.icon7.com/support.aspx

FR Pour voir le Mode d'emploi complet et/ou pour installer le pilote, veuillez consulter le CD-ROM fourni dans le paquet, ou allez sur le site web: www.icon7.com/support.aspx

BP Para ver o Manual do usuário completo e/ou para instalar o driver, consulte o CD-ROM que acompanha o produto, ou visite: www.icon7.com/support.aspx

RSVP Your Icon7 Style Now!
Thank you for your interest and purchase of an Icon7 product!
Your enjoyment and satisfaction with our product(s) are our greatest achievements, and to better serve you, we cordially invite you to register your Icon7 product online at: www.icon7.com/support.aspx

Please go to the link above to register and receive Icon7's latest news, product, software and driver updates, plus other fun-filled offerings...
So, don't wait and REGISTER TODAY!

* For complete information about Icon7's Privacy Policy, please visit us at www.icon7.com

FCC Statement
This equipment has been tested and found to comply with the limits for a Class B digital device, pursuant to Part 15 of the FCC Rules. These limits are designed to provide reasonable protection against harmful interference in a residential installation. This equipment generates uses and can radiate radio frequency energy and, if not installed and used in accordance with the instructions, may cause harmful interference to radio communications. However, there is no guarantee that interference will not occur in a particular installation. If this equipment does cause harmful interference to radio or television reception, which can be determined by turning the equipment off and on, the user is encouraged to try to correct the interference by one or more of the following measures:
- Reorient or relocate the receiving antenna.
- Increase the separation between the equipment and receiver.
- Connect the equipment into an outlet on a circuit different from that to which the receiver is connected.
- Consult the dealer or an experienced radio/TV technician for help.

FCC Caution: Any changes or modifications not expressly approved by the party responsible for compliance could void the user's authority to operate this equipment. Any interference received, including interference that may cause undesired operation.

IMPORTANT NOTE:
FCC Radiation Exposure Statement:
This equipment complies with FCC radiation exposure limits set forth for an uncontrolled environment. This equipment should be installed and operated with minimum distance 20cm between the radiator & your body. This transmitter must not be co-located or operating in conjunction with any other antenna or transmitter.

This device complies with Part 15 of the FCC Rules. Operation is subject to the following two conditions: (1) This device may not cause harmful interference, and (2) this device must accept any interference received, including interference that may cause undesired operation.

Icon 7 Inc. 3-Year Limited Warranty Information
Thank you for your purchase of our product! Icon 7 Inc. ("Icon7") warrants your Icon7 hardware product against defects in material and workmanship under normal conditions of use and service for three years beginning from your original date of purchase. Please retain your original dated sales receipt as proof of the date of purchase. You will need it and might be requested to show the receipt for your warranty service. In addition, this warranty is limited to the original purchaser and is non-transferable. Under this warranty, Icon7, at its discretion, shall repair or replace the defective device.

FCC
Designed by Icon 7 Inc.
Made in China

77TEVINC