

Q14481



# ROG GLADIUS II WIRELESS

## OPTICAL GAMING GUIDE

quick start guide

快速使用手冊

快速用戶手冊

Guía de Inicio Rápido

stručná příručka

beknopte handleiding

pikaopas

guide de démarrage rapide

Schnellstartanleitung

Gyors üzembehelyezési útmutató

Guía rápida

hurtigstartguide

skrócona instrukcja obsługi

ghid de pornire rapidă

quick start guide

guía de inicio rápido

snabbstartguide

посібник із швидкого початку роботи

دليل التشغيل السريع

クイックスタートガイド

빠른 시작 설명서

hızlı başlatma kılavuzu



<http://ROG.ASUS.com>

ASUS

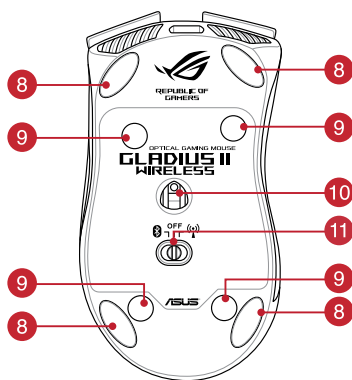
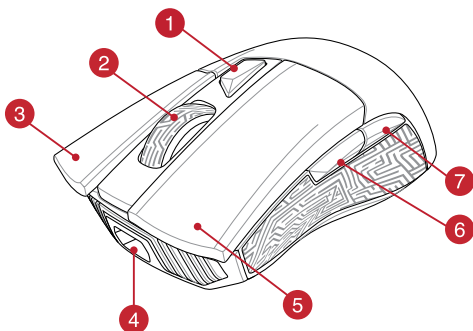
## Contents

English .....	2
繁體中文 .....	5
简体中文 .....	8
Português do Brasil.....	10
Čeština .....	12
Nederlands.....	14
Suomi.....	16
Français .....	18
Deutsch.....	20
Magyar.....	22
Italiano.....	24
Norsk .....	26
Polski .....	28
Română.....	30
Русский.....	32
Español.....	34
Svenska .....	36
Українська.....	38
عربي .....	40
日本語.....	42
한국어 .....	44
Türkçe .....	46
Slovensky.....	48

## Package contents

- 1 x ROG Gladius II Wireless Gaming Mouse
- 1 x 2-meter USB cable
- 1 x USB dongle
- 2 x Japanese-made Omron mouse switches
- 1 x ROG logo sticker
- 1 x ROG Pouch
- User documentation

## Device features






- 1 DPI Button
- 2 Scroll wheel
- 3 Right Button
- 4 Micro USB 2.0 connector
- 5 Left Button
- 6 Forward button
- 7 Backward button
- 8 Mouse foot
- 9 Rubber cover
- 10 Optical sensor
- 11 Connection mode switch

## Profile switching

- 1 + 7 Switch to Profile 1
- 1 + 2 Switch to Profile 3
- 1 + 6 Switch to Profile 2

## Connection mode switching

- 
 Switch to Wireless off
- 
 Switch to Bluetooth mode\*
- 
 Switch to 2.4G Wireless mode

\* Refer to the section *Pairing your gaming mouse via Bluetooth* for more information on pairing your gaming mouse.

## Specifications

Type	Wired / RF 2.4GHz / Bluetooth
Interface	USB 2.0
Optical Sensor	100 - 16000 DPI
Switch	50-million-clicks, Omron switches
Battery Life	Up to 24 hrs of nonstop gaming with standard RGB lighting, and 36+ hrs with lighting off (in RF 2.4GHz wireless mode)
Buttons	6 programmable buttons, including a clickable scroll wheel
Polling Rate	1000Hz Bluetooth mode 125Hz
Lighting	ASUS Aura Sync
USB Dongle	1 x USB receiver
Dimensions (mm)	126 x 67 x 45mm (L x W x H)
Weight (g)	124 g (mouse only)

## System requirements

- Windows® 10 / Windows® 7
- 100 MB of hard disk space (for optional software installation)
- USB port
- Internet connection (for downloading optional software)

## Getting started

### To charge your ROG Gladius II Wireless Gaming Mouse:

Connect your ROG Gladius II Wireless Gaming Mouse to a USB port on your computer, or an adapter using the bundled USB cable to charge your gaming mouse. Refer to the table below for the different LED statuses of your ROG Gladius II Wireless Gaming Mouse.

Status	Description
Green (breathing for 1 minute)	Battery Power 100%
Red (breathing)	Battery Power under 25%

### To connect your ROG Gladius II Wireless Gaming Mouse:

#### Using a USB cable

1. Connect the USB cable to your computer's USB port.
2. Connect the micro USB cable to your gaming mouse.

---

**NOTE:** Ensure the ROG logo on the micro USB cable faces up when connecting it to the gaming mouse.

---

3. Download the driver from <http://www.asus.com> then install it in your computer.

#### Using the RF 2.4G Wireless mode

1. Connect the bundled USB dongle to your computer's USB port.
2. Set the connection switch to the RF 2.4G Wireless mode.

#### Pairing your gaming mouse via Bluetooth

1. Set the connection switch to the Bluetooth connection mode.
2. Set up your PC to begin pairing. Click on **Start > Control Panel > Devices and Printers**, then click on **Add a device** and select **ROG GLADIUS II WIRELESS** to begin pairing.

---

**NOTE:** The steps to set up your PC are the same for both Windows® 7 and Windows® 10.

---

3. Your gaming mouse will automatically start pairing. The LEDs on your gaming mouse will blink blue for 60 seconds whilst pairing.
4. Once your gaming mouse has been successfully paired, the LEDs on your gaming mouse will light up blue for 3 seconds then revert to its original LED lighting effect.

---

**IMPORTANT!** If you encounter problems reconnecting your mouse after it has already been paired, remove the device from the device list, then follow steps 1 - 4 to reconnect it.

---

**NOTE:** To pair your gaming mouse to a different device, press and hold the **Left button**, **Right button**, and **DPI button** for 3 seconds, the LEDs on your gaming mouse will blink blue. This will reset the Bluetooth pairing and allow you to pair your gaming mouse to a different device.

---

## Customizing with ROG Armoury

For a more programmable buttons, performance settings, lighting effects, and surface calibration, download and install the ROG Armoury from [www.asus.com](http://www.asus.com).

---

**IMPORTANT!** When you encounter a problem while updating the firmware, unplug the micro USB cable, then press and hold down the left, right and scroll button on your mouse and replug the micro USB cable to restart the update.

---

**NOTE:** ROG Armoury does not support the Bluetooth mode when customizing your gaming mouse. Ensure your gaming mouse is connected via USB cable or set to the RF 2.4G Wireless mode when using ROG Armoury.

---

## Updating your gaming mouse and dongle

### To update the firmware of your gaming mouse and/or dongle:

1. Connect the USB cable and/or USB dongle to your computer's USB port(s).
2. Launch ROG Armoury, then update the firmware of your gaming mouse. Please refer to the ROG Armoury manual for more details on updating firmware.

## Replacing the switches

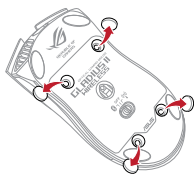
---

**NOTE:** Refer to [www.asus.com](http://www.asus.com) for the list of compatible switches.

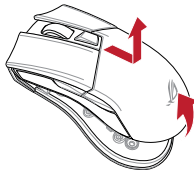
---

If you want to replace the switches, follow the steps below:

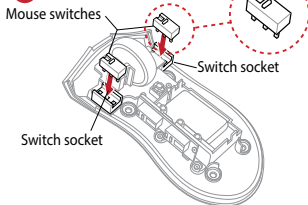
1



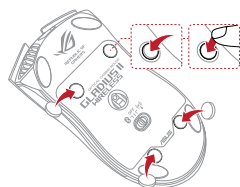
2



3



4



---

**IMPORTANT!**

- Ensure to install the switch with its button facing the front of the mouse to the switch socket.
  - Ensure that the switches are seated properly on the switch sockets.
- 

---

**NOTE:** Ensure the rubber covers are pushed in completely.

---

## System requirements

- Windows 10 / Windows 7 • 100 MB of hard disk space (for optional software installation)
- USB port • Internet connection (for downloading optional software)

## Getting started

### To charge your ROG Gladius II Wireless Gaming Mouse:

Connect your ROG Gladius II Wireless Gaming Mouse to a USB port on your computer, or an adapter using the bundled USB cable to charge your gaming mouse. Refer to the table below for the different LED statuses of your ROG Gladius II Wireless Gaming Mouse.

Status	Description
Green (breathing for 1 minute)	Battery Power 100%
Red (breathing)	Battery Power under 25%

### To connect your ROG Gladius II Wireless Gaming Mouse:

#### Using a USB cable

1. Connect the USB cable to your computer's USB port.
2. Connect the micro USB cable to your gaming mouse.

---

NOTE: Ensure the ROG logo on the micro USB cable faces up when connecting it to the gaming mouse.

---

3. Download the driver from <http://www.asus.com> then install it in your computer.

#### Using the RF 2.4G Wireless mode

1. Connect the bundled USB dongle to your computer's USB port.
2. Set the connection switch to the RF 2.4G Wireless mode.

#### Pairing your gaming mouse via Bluetooth

1. Set the connection switch to the Bluetooth connection mode.
2. Set up your PC to begin pairing. Click on Start > Control Panel > Devices and Printers, then click on Add a device and select ROG GLADIUS II WIRELESS to begin pairing.

---

NOTE: The steps to set up your PC are the same for both Windows® 7 and Windows® 10.

---

3. Your gaming mouse will automatically start pairing. The LEDs on your gaming mouse will blink blue for 60 seconds whilst pairing.
4. Once your gaming mouse has been successfully paired, the LEDs on your gaming mouse will light up blue for 3 seconds then revert to its original LED lighting effect.

---

IMPORTANT! If you encounter problems reconnecting your mouse after it has already been paired, remove the device from the device list, then follow steps 1 - 4 to reconnect it.

---

- 
6. NOTE: To pair your gaming mouse to a different device, press and hold the Left button, Right button, and DPI button for 3 seconds, the LEDs on your gaming mouse will blink blue. This will reset the Bluetooth pairing and allow you to pair your gaming mouse to a different device.

## Customizing with ROG Armoury

For a more programmable buttons, performance settings, lighting effects, and surface calibration, download and install the ROG Armoury from [www.asus.com](http://www.asus.com).

---

IMPORTANT! When you encounter a problem while updating the firmware, unplug the micro USB cable, then press and hold down the left, right and scroll button on your mouse and replug the micro USB cable to restart the update.

---

NOTE: ROG Armoury does not support the Bluetooth mode when customizing your gaming mouse. Ensure your gaming mouse is connected via USB cable or set to the RF 2.4G Wireless mode when using ROG Armoury.

---

## Updating your gaming mouse and dongle

### To update the firmware of your gaming mouse and/or dongle:

1. Connect the USB cable and/or USB dongle to your computer's USB port(s).
2. Launch ROG Armoury, then update the firmware of your gaming mouse. Please refer to the ROG Armoury manual for more details on updating firmware.

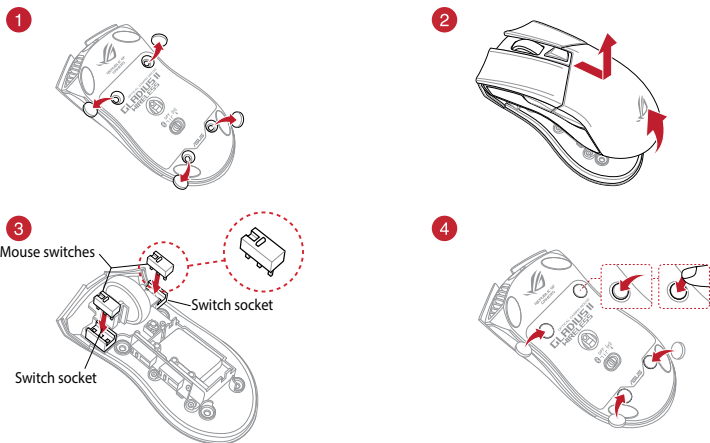
## Replacing the switches

---

NOTE: Refer to [www.asus.com](http://www.asus.com) for the list of compatible switches.

---

If you want to replace the switches, follow the steps below:



---

### IMPORTANT!

- Ensure to install the switch with its button facing the front of the mouse to the switch socket.
- Ensure that the switches are seated properly on the switch sockets.

---

NOTE: Ensure the rubber covers are pushed in completely.

---



## Safety Guidelines

Keep the device away from liquid, humidity, or moisture. Operate the device only within the specific temperature range of 0°C(32°F) to 45°C(113°F). When the device exceeds the maximum temperature, unplug or switch off the device to let it cool down.

## Notices

### Limitation of Liability

Circumstances may arise where because of a default on ASUS' part or other liability, you are entitled to recover damages from ASUS. In each such instance, regardless of the basis on which you are entitled to claim damages from ASUS, ASUS is liable for no more than damages for bodily injury (including death) and damage to real property and tangible personal property; or any other actual and direct damages resulted from omission or failure of performing legal duties under this Warranty Statement, up to the listed contract price of each product.

ASUS will only be responsible for or indemnify you for loss, damages or claims based in contract, tort or infringement under this Warranty Statement.

This limit also applies to ASUS' suppliers and its reseller. It is the maximum for which ASUS, its suppliers, and your reseller are collectively responsible.

UNDER NO CIRCUMSTANCES IS ASUS LIABLE FOR ANY OF THE FOLLOWING: (1) THIRD-PARTY CLAIMS AGAINST YOU FOR DAMAGES; (2) LOSS OF, OR DAMAGE TO, YOUR RECORDS OR DATA; OR (3) SPECIAL, INCIDENTAL, OR INDIRECT DAMAGES OR FOR ANY ECONOMIC CONSEQUENTIAL DAMAGES (INCLUDING LOST PROFITS OR SAVINGS), EVEN IF ASUS, ITS SUPPLIERS OR YOUR RESELLER IS INFORMED OF THEIR POSSIBILITY.

### Federal Communications Commission Statement

This device complies with Part 15 of the FCC Rules. Operation is subject to the following two conditions:

- This device may not cause harmful interference.
- This device must accept any interference received including interference that may cause undesired operation.

This equipment has been tested and found to comply with the limits for a Class B digital device, pursuant to Part 15 of the FCC Rules. These limits are designed to provide reasonable protection against harmful interference in a residential installation. This equipment generates, uses and can radiate radio frequency energy and, if not installed and used in accordance with manufacturer's instructions, may cause harmful interference to radio communications. However, there is no guarantee that interference will not occur in a particular installation. If this equipment does cause harmful interference to radio or television reception, which can be determined by turning the equipment off and on, the user is encouraged to try to correct the interference by one or more of the following measures:

- Reorient or relocate the receiving antenna.
- Increase the separation between the equipment and receiver.
- Connect the equipment to an outlet on a circuit different from that to which the receiver is connected.
- Consult the dealer or an experienced radio/TV technician for help.

---

**CAUTION!** Any changes or modifications not expressly approved by the grantee of this device could void the user's authority to operate the equipment.

---

## RF Exposure Warning

The equipment complies with FCC RF exposure limits set forth for an uncontrolled environment. The equipment must not be co-located or operating in conjunction with any other antenna or transmitter.

## REACH

Complying with the REACH (Registration, Evaluation, Authorisation, and Restriction of Chemicals) regulatory framework, we published the chemical substances in our products at ASUS REACH website at <http://csr.asus.com/english/REACH.htm>.

## ASUS Recycling/Takeback Services

ASUS recycling and takeback programs come from our commitment to the highest standards for protecting our environment. We believe in providing solutions for you to be able to responsibly recycle our products, batteries, other components as well as the packaging materials. Please go to <http://csr.asus.com/english/Takeback.htm> for detailed recycling information in different regions.

## Proper disposal



DO NOT throw the device in municipal waste. This product has been designed to enable proper reuse of parts and recycling. The symbol of the crossed out wheeled bin indicates that the product (electrical, electronic equipment and mercury-containing button cell battery) should not be placed in municipal waste. Check local regulations for disposal of electronic products.



DO NOT throw the device in fire. DO NOT short circuit the contacts. DO NOT disassemble the device.

## Radio Frequency (RF) Exposure Information

The radiated output power of the wireless device is below the Industry Canada (IC) radio frequency exposure limits. The wireless device should be used in such a manner such that the potential for human contact during normal operation is minimized.

This device has also been evaluated and shown compliant with the IC RF Exposure limits under mobile exposure conditions (antennas are greater than 20cm from a person's body).

## Compliance Statement of Innovation, Science and Economic Development Canada (ISED)

This device complies with Innovation, Science and Economic Development Canada licence exempt RSS standard(s). Operation is subject to the following two conditions: (1) this device may not cause interference, and (2) this device must accept any interference, including interference that may cause undesired operation of the device.

CAN ICES-3(B)/NMB-3(B)

## Déclaration de conformité de Innovation, Sciences et Développement économique Canada (ISED)

Le présent appareil est conforme aux CNR d'Innovation, Sciences et Développement économique Canada applicables aux appareils radio exempts de licence. L'exploitation est autorisée aux deux conditions suivantes : (1) l'appareil ne doit pas produire de brouillage, et (2) l'utilisateur de l'appareil doit accepter tout brouillage radioélectrique subi, même si le brouillage est susceptible d'en compromettre le fonctionnement.

CAN ICES-3(B)/NMB-3(B)

## VCCI: Japan Compliance Statement

### VCCI Class B Statement

警告 VCCI準拠クラスB機器 (日本)

この装置は、情報処理装置等電波障害自主規制協議会(VCCI)の基準に基づくクラスB情報技術装置です。この装置は、家庭環境で使用することを目的としていますが、この装置がラジオやテレビジョン受信機に近接して使用されると、受信障害を引き起こすことがあります。

取扱説明書に従って正しい取り扱いをして下さい。

## BSMI: Taiwan Wireless Statement

無線設備の警告聲明

經型式認證合格之低功率射頻電機，非經許可，公司、商號或使用者均不得擅自變更頻率、加大功率或變更原設計之特性及功能。低功率射頻電機之使用不得影響飛航安全及干擾合法通信；經發現有干擾現象時，應立即停用，並改善至無干擾時方得繼續使用。前項合法通信，指依電信法規定作業之無線電通信。低功率射頻電機須忍受合法通信或工業、科學及醫療用電波輻射性電機設備之干擾。

## NCC: Taiwan Wireless Statement

無線設備の警告聲明

經型式認證合格之低功率射頻電機，非經許可，公司、商號或使用者均不得擅自變更射頻、加大功率或變更原設計之特性及功能。低功率射頻電機之使用不得影響飛航安全及干擾合法通信；經發現有干擾現象時，應立即停用，並改善至無干擾時方得繼續使用。前項合法通信指依電信法規規定作業之無線電通信。低功率射頻電機須忍受合法通信或工業、科學及醫療用電波輻射性電機設備之干擾。

## KC: Korea Warning Statement



B급 기기 (가정용 방송통신기자재)

이 기기는 가정용(B급) 전자파적합기기로서 주로 가정에서 사용하는 것을 목적으로 하며, 모든 지역에서 사용할 수 있습니다.

R-CMM-MSQ-P702

## Ukraine Certification Logo



UA.TR.028

## RF Output table

Function	Frequency	Maximum Output Power (EIRP)
2.4GHz wireless	(2402 - 2479 MHz) - Mouse	+6 dBm
	(2402 - 2479 MHz) - Dongle	+5 dBm
Bluetooth	(2402 - 2480 MHz) - Mouse	+2 dBm

## Wireless Operation Channel for Different Domains

The wireless operation channel of this mouse is universal worldwide: 2.402-2.480 GHz, Ch02 to Ch80.



电子电气产品有害物质限制使用标识：图中之数字为产品之环保使用期限。仅指电子电气产品中含有的有害物质不致发生外泄或突变，从而对环境造成污染或对人体、财产造成严重损害的期限。

部件名称	有害物质					
	铅 (Pb)	汞 (Hg)	镉 (Cd)	六价铬 (Cr <sup>6+</sup> )	多溴联苯 (PBB)	多溴二苯醚 (PBDE)
印刷电路板及其电子组件	×	○	○	○	○	○
外壳	○	○	○	○	○	○
外部信号连接头及线材	○	○	○	○	○	○
其它	×	○	○	○	○	○

本表格依据 SJ/T 11364 的规定编制。  
 ○：表示该有害物质在该部件所有均质材料中的含量均在 GB/T 26572 规定的限量要求以下。  
 ×：表示该有害物质至少在该部件的某一均质材料中的含量超出 GB/T 26572 规定的限量要求，然该部件仍符合欧盟指令 2011/65/EU 的规范。  
 备注：此产品所标示之环保使用期限，系指在一般正常使用状况下。

「產品之限用物質含有情況」之相關資訊，請參考下表：

單元	限用物質及其化學符號					
	鉛 (Pb)	汞 (Hg)	鎘 (Cd)	六價鉻 (Cr <sup>6+</sup> )	多溴聯苯 (PBB)	多溴二苯醚 (PBDE)
印刷電路板及電子組件	-	○	○	○	○	○
外殼	○	○	○	○	○	○
滾輪裝置	○	○	○	○	○	○
其他及其配件	-	○	○	○	○	○

備考 1. “○” 係指該項限用物質之百分比含量未超出百分比含量基準值。  
 備考 2. “-” 係指該項限用物質為排除項目。

## CE Mark Warning



### Simplified EU Declaration of Conformity

ASUSTek Computer Inc. hereby declares that this device is in compliance with the essential requirements and other relevant provisions of Directive 2014/53/EU. Full text of EU declaration of conformity is available at <https://www.asus.com/support/>

### Déclaration simplifiée de conformité de l'UE

ASUSTek Computer Inc. déclare par la présente que cet appareil est conforme aux critères essentiels et autres clauses pertinentes de la directive 2014/53/EU. La déclaration de conformité de l'UE peut être téléchargée à partir du site internet suivant : <https://www.asus.com/support/>

### **Vereinfachte EU-Konformitätserklärung**

ASUSTek COMPUTER INC erklärt hiermit, dass dieses Gerät mit den grundlegenden Anforderungen und anderen relevanten Bestimmungen der Richtlinie 2014/53/EU übereinstimmt. Der gesamte Text der EU-Konformitätserklärung ist verfügbar unter: <https://www.asus.com/support/>

### **Dichiarazione di conformità UE semplificata**

ASUSTek Computer Inc. con la presente dichiara che questo dispositivo è conforme ai requisiti essenziali e alle altre disposizioni pertinenti con la direttiva 2014/53/EU. Il testo completo della dichiarazione di conformità UE è disponibile all'indirizzo: <https://www.asus.com/support/>

### **Упрощенное заявление о соответствии европейской директиве**

ASUSTek Computer Inc. заявляет, что устройство соответствует основным требованиям и другим соответствующим условиям директивы 2014/53/EU. Полный текст декларации соответствия ЕС доступен на <https://www.asus.com/support/>

### **إعلان التوافق المبسط الصادر عن الاتحاد الأوروبي**

تقر شركة ASUSTek Computer Inc أن هذا الجهاز يتوافق مع المتطلبات الأساسية والأحكام الأخرى ذات الصلة الخاصة بتوجيه 2014/53/EU. يتوفر النص الكامل لإعلان التوافق الصادر عن الاتحاد الأوروبي على: <https://www.asus.com/support/>

### **Опростена декларация за съответствие на ЕС**

С настоящото ASUSTek Computer Inc. декларира, че това устройство е в съответствие със съществените изисквания и другите приложими постановления на свързаната Директива 2014/53/ЕС. Пълният текст на ЕС декларация за съвместимост е достъпен на адрес <https://www.asus.com/support/>

### **Declaração de Conformidade UE Simplificada**

ASUSTek Computer Inc. declara que este dispositivo está em conformidade com os requisitos essenciais e outras disposições relevantes relacionadas às diretivas 2014/53/UE. O texto completo da declaração de conformidade CE está disponível em <https://www.asus.com/support/>

### **Pojednostavljena EU Izjava o sukladnosti**

ASUSTek Computer Inc. ovim izjavljuje da je ovaj uređaj sukladan s bitnim zahtjevima i ostalim odgovarajućim odredbama direktive 2014/53/EU. Cijeli tekst EU izjave o sukladnosti dostupan je na <https://www.asus.com/support/>

### **Zjednodušené prohlášení o shodě EU**

Společnost ASUSTek Computer Inc. tímto prohlašuje, že toto zařízení splňuje základní požadavky a další příslušná ustanovení směrnice 2014/53/ EU. Plně znění prohlášení o shodě EU je k dispozici na adrese <https://www.asus.com/support/>

### **Forenklet EU-overensstemmelseerklæring**

ASUSTek Computer Inc. erklærer hermed at denne enhed er i overensstemmelse med hovedkravene og øvrige relevante bestemmelser i direktivet 2014/53/EU. Hele EU-overensstemmelseerklæringen kan findes på <https://www.asus.com/support/>

### **Vereenvoudigd EU-conformiteitsverklaring**

ASUSTek Computer Inc. verklaart hierbij dat dit apparaat voldoet aan de essentiële vereisten en andere relevante bepalingen van Richtlijn 2014/53/EU. De volledige tekst van de EU-conformiteitsverklaring is beschikbaar op <https://www.asus.com/support/>

### **Lihtsustatud EÜ vastavusdeklaratsioon**

Käesolevaga kinnitab ASUSTek Computer Inc, et seade vastab direktiivi 2014/53/EÜ olulistele nõuetele ja teistele asjakohastele sätetele. EL vastavusdeklaratsiooni täistekst on saadaval veebisaidil <https://www.asus.com/support/>

### **Eurooppa - EY:n vaatimustenmukaisuusvakuutus**

ASUSTek Computer Inc. ilmoittaa täten, että tämä laite on direktiivin 2014/53/EU olennaisten vaatimusten ja muiden asiaankuuluvien lisäysten mukainen. Koko EY:n vaatimustenmukaisuusvakuutuksen teksti on luettavissa osoitteessa <https://www.asus.com/support/>

### **تعبیر از نسخه ساده شده بیانه اتحادیه اروپا**

ASUSTek Computer Inc در اینجا اعلام می کند که این دستگاه با نیازهای اساسی و سایر مقررات مربوط به بیانه 2014/53/EU مطابقت دارد. متن کامل بیروی از این بیانه اتحادیه اروپا در این آدرس موجود است: <https://www.asus.com/support/>

### **Απλοποιημένη Δήλωση Συμμόρφωσης ΕΕ**

Διά του παρόντος η ASUSTek Computer Inc. δηλώνει ότι αυτή η συσκευή είναι σύμμορφη με τις βασικές προϋποθέσεις και άλλες σχετικές διατάξεις της Οδηγίας 2014/53/ΕΕ. Το πλήρες κείμενο της δήλωσης συμμόρφωσης της ΕΕ είναι διαθέσιμο στη διεύθυνση <https://www.asus.com/support/>

### **הצהרת תאימות רגולטורית מקוצרת עבור האיחוד אירופי**

ASUSTek Computer Inc. מצהירה בזאת כי מכשיר זה תואם לדרישות החיוניות ולשאר הסעיפים הרלוונטיים של תקנה 2014/53/EU. ניתן לקרוא את הנוסח המלא של הצהרת התאימות הרגולטורית עבור האיחוד האירופי בכתובת: <https://www.asus.com/support/>

### **Egyszerűsített EU megfelelőségi nyilatkozat**

Az ASUSTek Computer Inc. ezennel kijelenti, hogy ez az eszköz megfelel az 2014/53/EU sz. irányelv alapvető követelményeinek és egyéb vonatkozó rendelkezéseinek. Az EU megfelelőségi nyilatkozat teljes szövegét a következő weboldalon tekintheti meg: <https://www.asus.com/support/>

### **Pernyataan Kesesuaian UE yang Disederhanakan**

ASUSTek Computer Inc. dengan ini menyatakan bahwa perangkat ini memenuhi persyaratan utama dan ketentuan relevan lainnya yang terdapat pada Petunjuk 2014/53/EU. Teks lengkap pernyataan kesesuaian EU tersedia di: <https://www.asus.com/support/>

### **Vienkāršota ES atbilstības paziņojums**

ASUSTek Computer Inc. ar šo paziņo, ka šī ierīce atbilst Direktīvas 2014/53/ES būtiskajām prasībām un citiem citiem saistošajiem nosacījumiem. Pilns ES atbilstības paziņojuma teksts pieejams šeit: <https://www.asus.com/support/>

### **Supraprastinta ES atitikties deklaracija**

Šiame dokumente bendrovė „ASUSTek Computer Inc.“ pareiškia, kad šis prietaisas atitinka pagrindinius reikalavimus ir kitas susijusias Direktyvos 2014/53/ES nuostatas. Visas ES atitikties deklaracijos tekostas pateikiamas čia: <https://www.asus.com/support/>

### **Forenklet EU-samsvarserklæring**

ASUSTek Computer Inc. erklærer herved at denne enheten er i samsvar med hovedsaklige krav og andre relevante forskrifter i direktivet 2014/53/EU. Fullstendig tekst for EU-samsvarserklæringen finnes på: <https://www.asus.com/support/>

### **Uproszczone deklaracja zgodności UE**

Firma ASUSTek Computer Inc. niniejszym oświadcza, że urządzenie to jest zgodne z zasadniczymi wymogami i innymi właściwymi postanowieniami dyrektywy 2014/53/EU. Pełny tekst deklaracji zgodności UE jest dostępny pod adresem <https://www.asus.com/support/>

### **Declaração de Conformidade Simplificada da UE**

A ASUSTek Computer Inc. declara que este dispositivo está em conformidade com os requisitos essenciais e outras disposições relevantes da Diretiva 2014/53/UE. O texto integral da declaração de conformidade da UE está disponível em <https://www.asus.com/support/>

### **Declarație de conformitate UE, versiune simplificată**

Prin prezenta, ASUSTek Computer Inc. declară că acest dispozitiv este în conformitate cu reglementările esențiale și cu celelalte prevederi relevante ale Directivei 2014/53/UE. Textul complet al declarației de conformitate UE este disponibil la adresa <https://www.asus.com/support/>

### **Popjednostavljena Deklaracija o usaglašenosti EU**

ASUSTek Computer Inc. ovim izjavljuje da je ovaj uređaj usaglašen sa osnovnim zahtevima i drugim relevantnim odredbama Direktive 2014/53/EU. Ceo tekst Deklaracije o usaglašenosti EU dostupan je na lokaciji <https://www.asus.com/support/>

### **Zjednodušené vyhlásenie o zhode platné pre EÚ**

Spoločnosť ASUSTek Computer Inc. týmto vyhlasuje, že toto zariadenie je v súlade so základnými požiadavkami a ďalšími príslušnými ustanoveniami smernice č. 2014/53/EÚ. Plné znenie vyhlásenia o zhode pre EÚ je k dispozícii na lokalite <https://www.asus.com/support/>

### **Poenostavljena izjava EU o skladnosti**

ASUSTek Computer Inc. tukaj izjavlja, da je ta naprava skladna s temeljnimi zahtevami in drugimi relevantnimi določili Direktive 2014/53/EU. Polno besedilo izjave EU o skladnosti je na voljo na <https://www.asus.com/support/>

### **Declaración de conformidad simplificada para la UE**

Por la presente, ASUSTek Computer Inc. declara que este dispositivo cumple los requisitos básicos y otras disposiciones pertinentes de la directiva 2014/53/UE. En <https://www.asus.com/support/> está disponible el texto completo de la declaración de conformidad para la UE.

### **Förenklad EU-försäkran om överensstämmelse**

ASUSTek Computer Inc. deklarerar härmed att denna enhet överensstämmer med de grundläggande kraven och andra relevanta bestämmelser i direktiv 2014/53/EU. Fullständig text av EU-försäkran om överensstämmelse finns på <https://www.asus.com/support/>

### **ประกาศเกี่ยวกับความสอดคล้องของสหภาพยุโรปแบบย่อ**

ASUSTek Computer Inc. ขอประกาศในที่นี้ว่าอุปกรณ์นี้มีความสอดคล้องกับความต้องการที่จำเป็นและเงื่อนไขที่เกี่ยวข้องอื่น ๆ ของบทบัญญัติข้อกำหนด 2014/53/EU เนื้อหาที่สมบูรณ์ของประกาศความสอดคล้องกับ EU มีอยู่ที่ <https://www.asus.com/support/>

**Basitleştirilmiş AB Uyumluluk Bildirimi**

ASUSTek Computer Inc., bu aygıtın 2014/53/EU Yönergesinin temel gereksinimlerine ve diğer ilgili hükümlerine uygun olduğunu bildirir. AB uygunluk bildiriminin tam metni şu adreste bulunabilir: <https://www.asus.com/support/>

**Спрощена декларація про відповідність нормам ЄС**

ASUSTek Computer Inc. заявляє, що цей пристрій відповідає основним вимогам та іншим відповідним вимогам Директиви 2014 / 53 / EU. Повний текст декларації відповідності нормам ЄС доступний на <https://www.asus.com/support/>

## **ASUS contact information**

### **ASUSTeK COMPUTER INC.**

Address: 4F, No. 150, Li-Te Road, Peitou, Taipei 112, Taiwan  
Telephone: +886-2-2894-3447  
Fax: +886-2-2890-7798  
Web site: [www.asus.com](http://www.asus.com)

#### **Technical Support**

Telephone: +86-21-38429911  
Fax: +86-21-5866-8722, ext. 9101#  
Online support: <https://www.asus.com/support/Product/ContactUs/Services/questionform/?lang=en>

### **ASUS COMPUTER INTERNATIONAL (America)**

Address: 48720 Kato Rd., Fremont, CA 94538, USA  
Telephone: +1-510-739-3777  
Fax: +1-510-608-4555  
Web site: <http://www.asus.com/us/>

#### **Technical Support**

Support fax: +1-812-284-0883  
Telephone: +1-812-282-2787  
Online support: <https://www.asus.com/support/Product/ContactUs/Services/questionform/?lang=en-us>

### **ASUS COMPUTER GmbH (Germany and Austria)**

Address: Harkort Str. 21-23, 40880 Ratingen, Germany  
Fax: +49-2102-959931  
Web site: <http://www.asus.com/de>  
Online contact: <http://eu-rma.asus.com/sales>

#### **Technical Support**

Telephone: +49-2102-5789555  
Support Fax: +49-2102-959911  
Online support: <https://www.asus.com/support/Product/ContactUs/Services/questionform/?lang=de-de>



## **Authorized Representative in Russia**

Имя и адрес представителя на территории ТС: ООО «Дофин», 140573, РФ, Московская область, Озерский район, с. Бояркино,

Телефон/факс: +7 495 223 6008

Электронный адрес: local.declarant@gmail.com

Данное устройство соответствует требованиям Технического регламента Таможенного Союза ТР ТС 020/2011 Электромагнитная совместимость технических средств утв. решением КТС от 09.12.2011г. №879