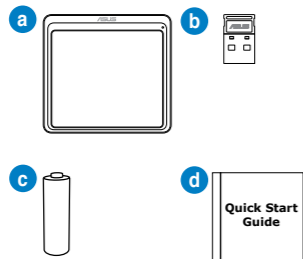


ENGLISH

Package Contents

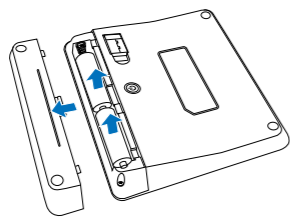
- a WP300 Touchpad
- b USB receiver x1
- c AA battery x2
- d Quick Start Guide



NOTE: Touchpad gestures are limited when used with Windows® Vista / XP / 7™ operating systems.

Installing the batteries

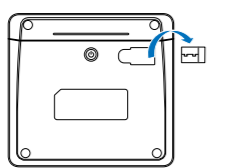
1. Remove the battery cover.
2. Insert the AA batteries into the slot, taking note of the correct polarity.



NOTE: The included batteries are not chargeable.

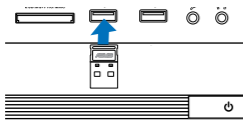
Setting up your Touchpad with your Desktop or Notebook PC

1. Remove the USB dongle from underneath the WP300 Touchpad.

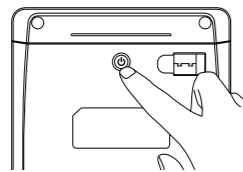


NOTE: The USB receiver can be stored underneath the touchpad.

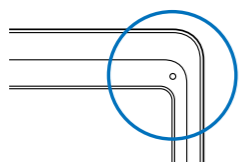
2. Insert the USB receiver into an available USB port on your notebook or desktop PC.



3. Press the power button underneath the touchpad to power on the touchpad.

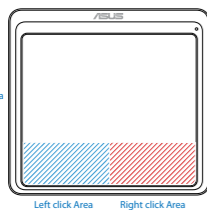


4. The system will begin pairing the USB receiver with the touchpad.



Primary Button and Context Menu

- **Primary Button**
Touchpad and click area: 1-tap with 1 finger
Left click area: 1-click
- **Context Menu**
Touchpad and click area: 1-tap with 2 fingers
Right click area: 1-click



LED Indicator

Status	LED	Behavior
ON	Green	Powered on.
OFF	Off	Powered off.
Power Saving Mode	Off	To wake up WP300 from Sleep Mode, click/tap on the touchpad.
Pairing in progress	Flashing green	The touchpad is connecting to the USB receiver.
Low power	Flashing red	Replace the AA batteries.
Battery empty	Off	No touchpad activity. Replace the AA batteries.

Touchpad Gestures

1. **Finger Slide.**
Slide your finger across the touchpad to move the pointer.
2. **Tap/Double Tap**
• In the Start screen, tap once to launch an app.
• In Desktop mode, double-tap an item to launch an application.
3. **Right edge swipe**
Swipe from the right edge to launch the Charms bar.
4. **Top edge swipe**
• In the Start screen, swipe from the top edge to launch the All apps bar.
• In a running app, swipe from the top edge to view its menu.
5. **Left edge swipe**
Swipe from the left edge to shuffle your running apps.
6. **Zoom in / Zoom out**
Spread apart your two fingers on the touchpad to zoom out.
Bring together your fingers on the touchpad to zoom in.

Additional Touchpad Gestures

Multi-touch	Gestures
2-fingers	Vertical scroll Horizontal scroll
3-fingers	Brush left / right to go to previous / next page Brush up / down for Windows® 8™ Start Screen
4-fingers	Brush left / right to go to previous / next track Brush up / down to increase / decrease volume
5-fingers	Brush up / down to hide / resume desktop

S-CHINESE

Package Contents

1. WP300 Touchpad.
2. USB receiver x1.
3. AA battery x2
4. Quick Start Guide .

NOTE: Touchpad gestures are limited when used with Windows® Vista / XP / 7™ operating systems.

Installing the batteries

1. Remove the battery cover.
2. Insert the AA batteries into the slot, taking note of the correct polarity.

NOTE: The included batteries are not chargeable.

Setting up your Touchpad with your Desktop or Notebook PC

1. Remove the USB dongle from underneath the WP300 Touchpad.
2. Insert the USB receiver into an available USB port on your notebook or desktop PC.
3. Press the power button underneath the touchpad to power on the touchpad.
4. The system will begin pairing the USB receiver with the touchpad.

Primary Button and Context Menu

- **Primary Button**
Touchpad and click area: 1-tap with 1 finger
Left click area: 1-click
- **Context Menu Button**
Touchpad and click area: 1-tap with 2 fingers
Right click area: 1-click

LED Indicator

1. On - Green - Touchpad powered on.
2. Off - Off - Touchpad powered off.
3. Power saving mode - Off - To wake up WP300 from Sleep Mode, click/tap on the touchpad.
4. Pairing in progress - Flashing green - The touchpad is connecting to the USB receiver.
5. Low power - Flashing red - Replace the AA batteries.
6. Battery empty - Off - No touchpad activity. Replace the AA batteries.

Touchpad Gestures

1. **Finger slide:** Slide your finger across the touchpad to move the pointer.
2. **Right edge swipe:** Swipe from the right edge to launch the Charms bar.
3. **Tap/Double tap:** In the Start screen, tap an app to launch it. In Desktop mode, double-tap an item to launch it.
4. **Top edge swipe:** In the Start screen, swipe from the top edge to launch the All apps bar. In a running app, swipe from the top edge to view its menu.
5. **Left edge swipe:** Swipe from the left edge to shuffle your running apps.
6. **Zoom in:** Spread apart your two fingers on the touchpad.

Additional Touchpad Gestures

Fingers	Gestures
2-fingers	Vertical scroll Horizontal scroll
3-fingers	Brush left / right to go to previous / next page Brush up/down for Windows® 8™ Start Screen
4-fingers	Brush left / right to go to previous / next track Brush up / down to increase / decrease volume
5-fingers	Brush up / down to hide / resume desktop

S-CHINESE

Package Contents

1. WP300 Touchpad.
2. USB receiver x1.
3. AA battery x2
4. Quick Start Guide .

NOTE: Touchpad gestures are limited when used with Windows® Vista / XP / 7™ operating systems.

Installing the batteries

1. Remove the battery cover.
2. Insert the AA batteries into the slot, taking note of the correct polarity.

NOTE: The included batteries are not chargeable.

Setting up your Touchpad with your Desktop or Notebook PC

1. Remove the USB dongle from underneath the WP300 Touchpad.
2. Insert the USB receiver into an available USB port on your notebook or desktop PC.
3. Press the power button underneath the touchpad to power on the touchpad.
4. The system will begin pairing the USB receiver with the touchpad.

Primary Button and Context Menu

- **Primary Button**
Touchpad and click area: 1-tap with 1 finger
Left click area: 1-click
- **Context Menu Button**
Touchpad and click area: 1-tap with 2 fingers
Right click area: 1-click

LED Indicator

1. On - Green - Touchpad powered on.
2. Off - Off - Touchpad powered off.
3. Power saving mode - Off - To wake up WP300 from Sleep Mode, click/tap on the touchpad.
4. Pairing in progress - Flashing green - The touchpad is connecting to the USB receiver.
5. Low power - Flashing red - Replace the AA batteries.
6. Battery empty - Off - No touchpad activity. Replace the AA batteries.

Touchpad Gestures

1. **Finger slide:** Slide your finger across the touchpad to move the pointer.
2. **Right edge swipe:** Swipe from the right edge to launch the Charms bar.
3. **Tap/Double tap:** In the Start screen, tap an app to launch it. In Desktop mode, double-tap an item to launch it.
4. **Top edge swipe:** In the Start screen, swipe from the top edge to launch the All apps bar. In a running app, swipe from the top edge to view its menu.
5. **Left edge swipe:** Swipe from the left edge to shuffle your running apps.
6. **Zoom in:** Spread apart your two fingers on the touchpad.

Additional Touchpad Gestures

Fingers	Gestures
2-fingers	Vertical scroll Horizontal scroll
3-fingers	Brush left / right to go to previous / next page Brush up/down for Windows® 8™ Start Screen
4-fingers	Brush left / right to go to previous / next track Brush up / down to increase / decrease volume
5-fingers	Brush up / down to hide / resume desktop

S-CHINESE

Package Contents

1. WP300 Touchpad.
2. USB receiver x1.
3. AA battery x2
4. Quick Start Guide .

NOTE: Touchpad gestures are limited when used with Windows® Vista / XP / 7™ operating systems.

Installing the batteries

1. Remove the battery cover.
2. Insert the AA batteries into the slot, taking note of the correct polarity.

NOTE: The included batteries are not chargeable.

Setting up your Touchpad with your Desktop or Notebook PC

1. Remove the USB dongle from underneath the WP300 Touchpad.
2. Insert the USB receiver into an available USB port on your notebook or desktop PC.
3. Press the power button underneath the touchpad to power on the touchpad.
4. The system will begin pairing the USB receiver with the touchpad.

Primary Button and Context Menu

- **Primary Button**
Touchpad and click area: 1-tap with 1 finger
Left click area: 1-click
- **Context Menu Button**
Touchpad and click area: 1-tap with 2 fingers
Right click area: 1-click

LED Indicator

1. On - Green - Touchpad powered on.
2. Off - Off - Touchpad powered off.
3. Power saving mode - Off - To wake up WP300 from Sleep Mode, click/tap on the touchpad.
4. Pairing in progress - Flashing green - The touchpad is connecting to the USB receiver.
5. Low power - Flashing red - Replace the AA batteries.
6. Battery empty - Off - No touchpad activity. Replace the AA batteries.

Touchpad Gestures

1. **Finger slide:** Slide your finger across the touchpad to move the pointer.
2. **Right edge swipe:** Swipe from the right edge to launch the Charms bar.
3. **Tap/Double tap:** In the Start screen, tap an app to launch it. In Desktop mode, double-tap an item to launch it.
4. **Top edge swipe:** In the Start screen, swipe from the top edge to launch the All apps bar. In a running app, swipe from the top edge to view its menu.
5. **Left edge swipe:** Swipe from the left edge to shuffle your running apps.
6. **Zoom in:** Spread apart your two fingers on the touchpad.

Additional Touchpad Gestures

Fingers	Gestures
2-fingers	Vertical scroll Horizontal scroll
3-fingers	Brush left / right to go to previous / next page Brush up/down for Windows® 8™ Start Screen
4-fingers	Brush left / right to go to previous / next track Brush up / down to increase / decrease volume
5-fingers	Brush up / down to hide / resume desktop

ITALIAN

Package Contents

1. WP300 Touchpad.
2. USB receiver x1.
3. AA battery x2
4. Quick Start Guide .

NOTE: Touchpad gestures are limited when used with Windows® Vista / XP / 7™ operating systems.

Installing the batteries

1. Remove the battery cover.
2. Insert the AA batteries into the slot, taking note of the correct polarity.

NOTE: The included batteries are not chargeable.

Setting up your Touchpad with your Desktop or Notebook PC

1. Remove the USB dongle from underneath the WP300 Touchpad.
- NOTE:** The USB receiver can be stored underneath the touchpad.
2. Insert the USB receiver into an available USB port on your notebook or desktop PC.
3. Press the power button underneath the touchpad to power on the touchpad.
4. The system will begin pairing the USB receiver with the touchpad.

Primary Button and Context Menu

- **Primary Button**
Touchpad and click area: 1-tap with 1 finger
Left click area: 1-click
- **Context Menu Button**
Touchpad and click area: 1-tap with 2 fingers
Right click area: 1-click

LED Indicator

1. On - Green - Touchpad powered on.
2. Off - Off - Touchpad powered off.
3. Power saving mode - Off - To wake up WP300 from Sleep Mode, click/tap on the touchpad.
4. Pairing in progress - Flashing green - The touchpad is connecting to the USB receiver.
5. Low power - Flashing red - Replace the AA batteries.
6. Battery empty - Off - No touchpad activity. Replace the AA batteries.

Touchpad Gestures

1. **Finger slide:** Slide your finger across the touchpad to move the pointer.
2. **Right edge swipe:** Swipe from the right edge to launch the Charms bar.
3. **Tap/Double tap:** In the Start screen, tap an app to launch it. In Desktop mode, double-tap an item to launch it.
4. **Top edge swipe:** In the Start screen, swipe from the top edge to launch the All apps bar. In a running app, swipe from the top edge to view its menu.
5. **Left edge swipe:** Swipe from the left edge to shuffle your running apps.
6. **Zoom in:** Spread apart your two fingers on the touchpad.

Additional Touchpad Gestures

Fingers	Gestures
2-fingers	Vertical scroll Horizontal scroll
3-fingers	Brush left / right to go to previous / next page Brush up/down for Windows® 8™ Start Screen
4-fingers	Brush left / right to go to previous / next track Brush up / down to increase / decrease volume
5-fingers	Brush up / down to hide / resume desktop

ITALIAN

Package Contents

1. WP300 Touchpad.
2. USB receiver x1.
3. AA battery x2
4. Quick Start Guide .

NOTE: Touchpad gestures are limited when used with Windows® Vista / XP / 7™ operating systems.

Installing the batteries

1. Remove the battery cover.
2. Insert the AA batteries into the slot, taking note of the correct polarity.

NOTE: The included batteries are not chargeable.

Setting up your Touchpad with your Desktop or Notebook PC

1. Remove the USB dongle from underneath the WP300 Touchpad.
- NOTE:** The USB receiver can be stored underneath the touchpad.
2. Insert the USB receiver into an available USB port on your notebook or desktop PC.
3. Press the power button underneath the touchpad to power on the touchpad.
4. The system will begin pairing the USB receiver with the touchpad.

Primary Button and Context Menu

- **Primary Button**
Touchpad and click area: 1-tap with 1 finger
Left click area: 1-click
- **Context Menu Button**
Touchpad and click area: 1-tap with 2 fingers
Right click area: 1-click

LED Indicator

1. On - Green - Touchpad powered on.
2. Off - Off - Touchpad powered off.
3. Power saving mode - Off - To wake up WP300 from Sleep Mode, click/tap on the touchpad.
4. Pairing in progress - Flashing green - The touchpad is connecting to the USB receiver.
5. Low power - Flashing red - Replace the AA batteries.
6. Battery empty - Off - No touchpad activity. Replace the AA batteries.

Touchpad Gestures

1. **Finger slide:** Slide your finger across the touchpad to move the pointer.
2. **Right edge swipe:** Swipe from the right edge to launch the Charms bar.
3. **Tap/Double tap:** In the Start screen, tap an app to launch it. In Desktop mode, double-tap an item to launch it.
4. **Top edge swipe:** In the Start screen, swipe from the top edge to launch the All apps bar. In a running app, swipe from the top edge to view its menu.
5. **Left edge swipe:** Swipe from the left edge to shuffle your running apps.
6. **Zoom in:** Spread apart your two fingers on the touchpad.

Additional Touchpad Gestures

Fingers	Gestures
2-fingers	Vertical scroll Horizontal scroll
3-fingers	Brush left / right to go to previous / next page Brush up/down for Windows® 8™ Start Screen
4-fingers	Brush left / right to go to previous / next track Brush up / down to increase / decrease volume
5-fingers	Brush up / down to hide / resume desktop

ITALIAN

Package Contents

1. WP300 Touchpad.
2. USB receiver x1.
3. AA battery x2
4. Quick Start Guide .

NOTE: Touchpad gestures are limited when used with Windows® Vista / XP / 7™ operating systems.

Installing the batteries

1. Remove the battery cover.
2. Insert the AA batteries into the slot, taking note of the correct polarity.

NOTE: The included batteries are not chargeable.

Setting up your Touchpad with your Desktop or Notebook PC

1. Remove the USB dongle from underneath the WP300 Touchpad.
- NOTE:** The USB receiver can be stored underneath the touchpad.
2. Insert the USB receiver into an available USB port on your notebook or desktop PC.
3. Press the power button underneath the touchpad to power on the touchpad.
4. The system will begin pairing the USB receiver with the touchpad.

Primary Button and Context Menu

- **Primary Button**
Touchpad and click area: 1-tap with 1 finger
Left click area: 1-click
- **Context Menu Button**
Touchpad and click area: 1-tap with 2 fingers
Right click area: 1-click

LED Indicator

1. On - Green - Touchpad powered on.
2. Off - Off - Touchpad powered off.
3. Power saving mode - Off - To wake up WP300 from Sleep Mode, click/tap on the touchpad.
4. Pairing in progress - Flashing green - The touchpad is connecting to the USB receiver.
5. Low power - Flashing red - Replace the AA batteries.
6. Battery empty - Off - No touchpad activity. Replace the AA batteries.

Touchpad Gestures

1. **Finger slide:** Slide your finger across the touchpad to move the pointer.
2. **Right edge swipe:** Swipe from the right edge to launch the Charms bar.
3. **Tap/Double tap:** In the Start screen, tap an app to launch it. In Desktop mode, double-tap an item to launch it.
4. **Top edge swipe:** In the Start screen, swipe from the top edge to launch the All apps bar. In a running app, swipe from the top edge to view its menu.
5. **Left edge swipe:** Swipe from the left edge to shuffle your running apps.
6. **Zoom in:** Spread apart your two fingers on the touchpad.

Additional Touchpad Gestures

Fingers	Gestures
2-fingers	Vertical scroll Horizontal scroll
3-fingers	Brush left / right to go to previous / next page Brush up/down for Windows® 8™ Start Screen
4-fingers	Brush left / right to go to previous / next track Brush up / down to increase / decrease volume
5-fingers	Brush up / down to hide / resume desktop

ITALIAN

Package Contents

1. WP300 Touchpad.
2. USB receiver x1.
3. AA battery x2
4. Quick Start Guide .

NOTE: Touchpad gestures are limited when used with Windows® Vista / XP / 7™ operating systems.

Installing the batteries

1. Remove the battery cover.
2. Insert the AA batteries into the slot, taking note of the correct polarity.

NOTE: The included batteries are not chargeable.

Setting up your Touchpad with your Desktop or Notebook PC

1. Remove the USB dongle from underneath the WP300 Touchpad.
- NOTE:** The USB receiver can be stored underneath the touchpad.
2. Insert the USB receiver into an available USB port on your notebook or desktop PC.
3. Press the power button underneath the touchpad to power on the touchpad.
4. The system will begin pairing the USB receiver with the touchpad.

Primary Button and Context Menu

- **Primary Button**
Touchpad and click area: 1-tap with 1 finger
Left click area: 1-click
- **Context Menu Button**
Touchpad and click area: 1-tap with 2 fingers
Right click area: 1-click

LED Indicator

1. On - Green - Touchpad powered on.
2. Off - Off - Touchpad powered off.
3. Power saving mode - Off - To wake up WP300 from Sleep Mode, click/tap on the touchpad.
4. Pairing in progress - Flashing green - The touchpad is connecting to the USB receiver.
5. Low power - Flashing red - Replace the AA batteries.
6. Battery empty - Off - No touchpad activity. Replace the AA batteries.

Touchpad Gestures

1. **Finger slide:** Slide your finger across the touchpad to move the pointer.
2. **Right edge swipe:** Swipe from the right edge to launch the Charms bar.
3. **Tap/Double tap:** In the Start screen, tap an app to launch it. In Desktop mode, double-tap an item to launch it.
4. **Top edge swipe:** In the Start screen, swipe from the top edge to launch the All apps bar. In a running app, swipe from the top edge to view its menu.
5. **Left edge swipe:** Swipe from the left edge to shuffle your running apps.
6. **Zoom in:** Spread apart your two fingers on the touchpad.

Additional Touchpad Gestures

Fingers	Gestures
2-fingers	Vertical scroll Horizontal scroll
3-fingers	Brush left / right to go to previous / next page Brush up/down for Windows® 8™ Start Screen
4-fingers	Brush left / right to go to previous / next track Brush up / down to increase / decrease volume
5-fingers	Brush up / down to hide / resume desktop

REACH

Complying with the REACH (Registration, Evaluation, Authorisation, and Restriction of Chemicals) regulatory framework, we published the chemical substances in our products at ASUS REACH website at <http://green.asus.com/english/REACH.htm>

Federal Communications Commission Statement

This device complies with Part 15 of the FCC Rules. Operation is subject to the following two conditions:

- This device may not cause harmful interference; and
- This device must accept any interference received including interference that may cause undesired operation.

This equipment has been tested and found to comply with the limits for a Class B digital device, pursuant to Part 15 of the FCC Rules. These limits are designed to provide reasonable protection against harmful interference in a residential installation. This equipment generates, uses and can radiate radio frequency energy and, if not installed and used in accordance with manufacturer's instructions, may cause harmful interference to radio communications. However, there is no guarantee that interference will not occur in a particular installation. If this equipment does cause harmful interference to radio or television reception, which can be determined by turning the equipment off and on, the user is encouraged to try to correct the interference by one or more of the following measures:

- Reorient or relocate the receiving antenna.
- Increase the separation between the equipment and receiver.
- Connect the equipment to an outlet on a circuit different from that to which the receiver is connected.
- Consult the dealer or an experienced radio/TV technician for help.

CE Statement of Compliance with EU Directive

This is a Class B product, in a domestic environment, this product may cause radio interference, in which case the user may be required to take adequate measures.

Declaration of Conformity (RT&TTE directive 1999/5/EC)

The following items were completed and are considered relevant and sufficient:

- Essential requirements as in [Article 3]
- Protection requirements for health and safety as in [Article 3.1a].
- Testing for electric safety according to [EN60950].
- Protection requirements for electromagnetic compatibility in [Article 3.1b].
- Testing for electromagnetic compatibility according to [Article 3.1b].
- Effective use of the ratio spectrum as in [Article 3.2].
- Radio test suites according to [EN 300 440].

CAUTION: Any changes of modifications not expressly approved by the grantee of this device could void the user's authority to operate the equipment.

ASUS Recycling/Takeback Services

ASUS recycling and takeback programs come from our commitment to the highest standards for protecting our environment. We believe in providing solutions for you to be able to responsibly recycle our products, batteries, other components, as well as the packaging materials. Please go to <http://csr.asus.com/english/Takeback.htm> for the detailed recycling information in different regions.



MANUFACTURER

ASUSTeK Computer Inc.

Tel: +886-2-2894-3447
Address: No. 150, LI-TE RD., PEITOU
TAIPEI 112, TAIWAN

AUTHORISED REPRESENTATIVE IN EUROPE

ASUS Computer GmbH

Address: HARKORT STR. 21-23
40880 RATINGEN, GERMANY

AUTHORISED DISTRIBUTOR IN TURKEY

Penta Teknoloji Urunleri Dagitim Ticaret Anonim Sirketi

Distributor Tel: 0216 645 8200
Address: Dudullu Organize Sanayi Bolgesi Nato Yolu 4. CAD.
No. 1 Dudullu Umraniye
34775 Istanbul, Turkey

**China RoHS EFUP
Labelling - 10 Years**



C-Tick Mark



EEE Yönetmeliğine Uygundur.