

FCC Statement

This device complies with part 15 of FCC Rules. Operation is subject to the following two conditions: (1) this device may not cause harmful interference, and (2) this device must accept any interference received, including interference that may cause undesired operation.

This equipment has been tested and found to comply with the limits for a Class B digital device, pursuant to part 15 of the FCC Rules. These limits are designed to provide reasonable protection against harmful interference in a residential installation. This equipment generates, uses and can radiate radio frequency energy and, if not installed and used in accordance with the instructions, may cause harmful interference to radio communications. However, there is no guarantee that interference will not occur in a particular installation. If this equipment does cause harmful interference to radio or television reception, which can be determined by turning the equipment off and on, the user is encouraged to try to correct the interference by one or more of the following measures:

- Reorient or relocate the receiving antenna.
- Increase the separation between the equipment and the receiver.
- Connect the equipment into an outlet on a circuit different from that to which the receiver is connected.

FCC Caution: To assure continued compliance, (example – use only shielded interface cable when connecting to computer or peripheral devices). Any changes or modifications not expressly approved by the party responsible for compliance could void the user's authority to operate this equipment.

This equipment complies with FCC RF radiation exposure limits set forth for an uncontrolled environment. This equipment should be installed and operated with a minimum distance of 20 centimeters between the radiator and your body.

This transmitter must not be co-located or operating in conjunction with any other antenna or transmitter.

Copyright

Copyright 2001 Primax Electronics Ltd. All rights reserved. No part of this publication may be reproduced, transmitted, transcribed, stored in a retrieval system, or translated into any language or computer language, in any form or by any means, electronic, optical, mechanical, magnetic, chemical, manual, or otherwise, without the prior written permission of Primax Electronics Ltd.

Trademarks

Primax is a registered trademark of Primax Electronics Ltd. All other trademarks used in this documentation are the sole property of their respective owners.

Installing Your Mouse

1. Hardware Installation

To connect your PS/2 Mouse

Note: Before connect the mouse to your system, please make sure your computer is off.

1. Turn off your computer.
2. Connect the mouse cable to the PS/2 (6-pin) mouse port.
3. Turn on the computer.

To connect your USB Mouse

Note: To use the USB mouse, you need to have Windows 98 / ME / 2000 / XP (recommended) installed on your computer.

1. You don't need to turn off your computer before connect your USB mouse.
2. Plug the rectangular USB mouse connector into the USB port (normally in the back of the PC).
3. Insert the software diskette into your disk drive and follow the onscreen instructions to install the device driver.

2. Installing MouseSuite™ Software

Important: If you are installing your mouse on a Windows NT / 2000 / XP system, please make sure you log in with Administrator right before proceeding.

The Mouse Suite™ Software must be installed in order to use all of the features of your new mouse. Please use the following guide to properly install the Mouse Suite™ software.

1. Start Windows and insert the Mouse Suite™ installation software into the appropriate drive.
2. Click **Start** on the Task Bar and select **Run**.
3. From the Run dialog box, enter: **<drive>:\Setup**, and click **OK**. For example, if the setup disk is in drive A, type **a:\setup**.
4. Follow the on-screen instructions to complete the software installation.

Using the Wheel

Note: This section is for wheel mouse only.

Your new mouse may have a wheel that can be used in two ways:

- Rotate it to use it as the wheel.
- Click it to use it as the wheel button.

After successful installation, the Wheel Mouse will offer the following features to make your life or work much easier.


Scrolling

The Wheel on your mouse can be used to scroll through most applications with scroll bars.

- To **scroll** with your Mouse, simply move the wheel on the mouse forward or backward.

AutoScrolling

AutoScroll allows you to automatically scroll through a document without having to move the mouse or mouse wheel constantly.

- To use AutoScroll while in a document, click the button that was designated as AutoScroll. An origin mark () will appear at your pointer position. To start AutoScrolling, move your pointer vertically, horizontally, or diagonally away from the origin mark. AutoScroll speed increases as the pointer is moved away from the origin mark. To stop AutoScrolling, press any mouse button or rotate the wheel.

Zooming

In some Office 97 compatible applications (e.g. Microsoft Word 97), additional zooming functions are available. You can use the *zooming* function to “zoom in” for a closer look at a page or “zoom out” to see more of a page.

- To zoom in, hold the **Ctrl** key down and rotate the mouse wheel forward.
- To zoom out, hold the **Ctrl** key down and rotate the mouse wheel backward.

Mouse Suite™ Control Panel

Mouse Suite™ comes with a Mouse Control Panel that lets you manage all the functions of your new mouse.

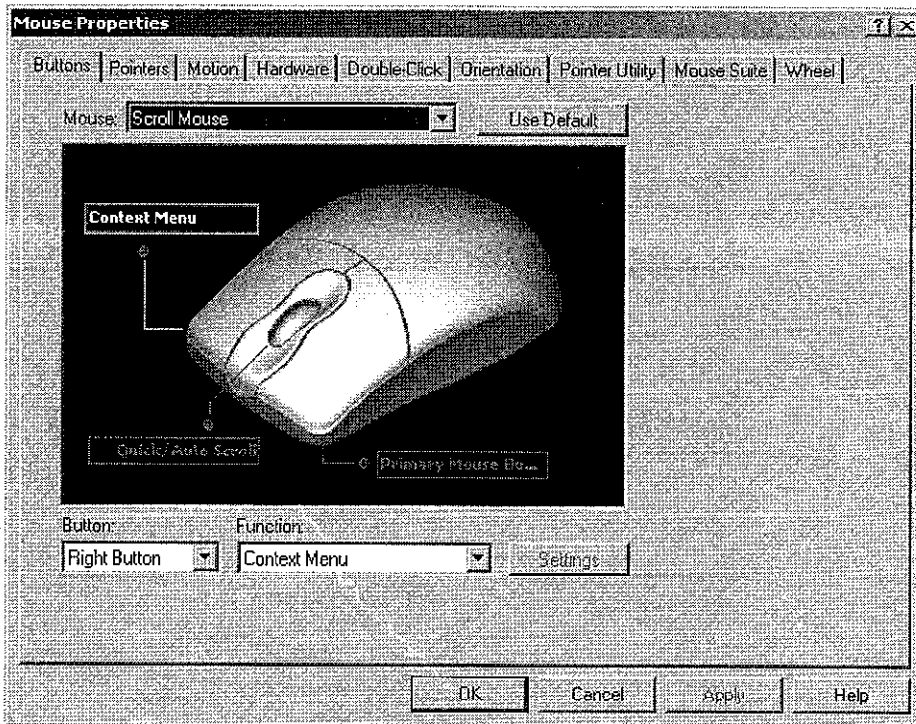
To find your Mouse Control Panel, follow these steps:

- On computers running Windows 95, Windows NT4.0 (and above) or Windows 98, click the **Start** button. Click on **Control Panel** under the **Settings** menu. Now double-click on the **Mouse Icon**.
-Or-
If you have already enabled on the **Show Mouse Icon in Task Bar** option in the Mouse Suite page of the Mouse Properties, simply double-click on the **Mouse Icon** in the Windows Task Bar.

The Mouse Properties Tabs

Mouse Suite™ offers a lot of extra functions that can be accessed within the Mouse Properties by clicking on the respective Tab.

Buttons



Accessing the *Buttons* page allows you to customize the function of each mouse button. The default settings for your mouse buttons are as follows:

- *Left Button* Primary Mouse Button (standard click and drag action)
- *Middle Button* Quick / Auto Scroll
- *Right Button* Context Menu / Alternate Select

To change the configuration of your mouse buttons, follow these steps:

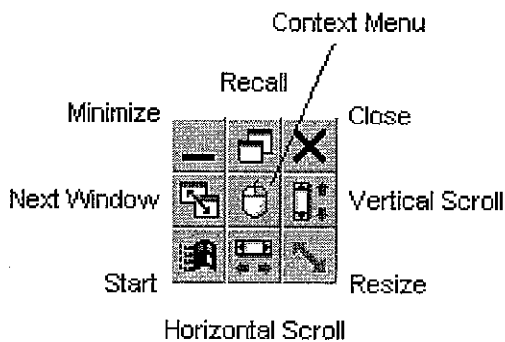
1. On the **Mouse Image**, click on the button you want to assign a new function to, or select a button from the **Button** list. The selected button will be displayed in the Button list and highlighted on the mouse image.
2. Next, select a function from the **Function** list (at least one mouse button must be designated as the Primary Mouse Button).
3. To reset your mouse buttons to the default setting, click on **Use Default**.
4. To confirm your button settings, click on **Apply**.

Special Button Functions

HyperGrid

HyperGrid incorporates nine common Windows tasks on one easy to use grid so you don't have to move to various screen areas to perform a task.

- Assign HyperGrid using the same procedure for standard button functions.
- To use the HyperGrid, press and hold the assigned mouse button to display the grid. Without releasing the button, move the pointer to an icon on the grid. Release the button to execute the command associated with that icon.



Minimize	Minimizes the active window.
Recall	Restores / maximizes the active window.
Close	Closes the active window.
Next Window	Makes the next window active.
Context Menu	Emulates the right mouse button to open the context menu.
Vertical Scroll	Performs the vertical scrolling function.
Start	Opens the Windows Start menu.
Horizontal Scroll	Performs the horizontal scrolling function.
Resize	Jumps to the size grip to resize the active window.

HyperLink

With HyperLink designated as a button function, you can open the application or document of your choice with a simple click.

- First, specify a button in the **Button** list.
- To shortcut to applications or documents not available from the Function list, select **HyperLink** from the **Function** list.
- Next, click on **Settings**. Click on **Browse** to search for and select a suitable shortcut.
- Click on **OK** to confirm your selection.
- To use HyperLink, simply click the assigned mouse button.

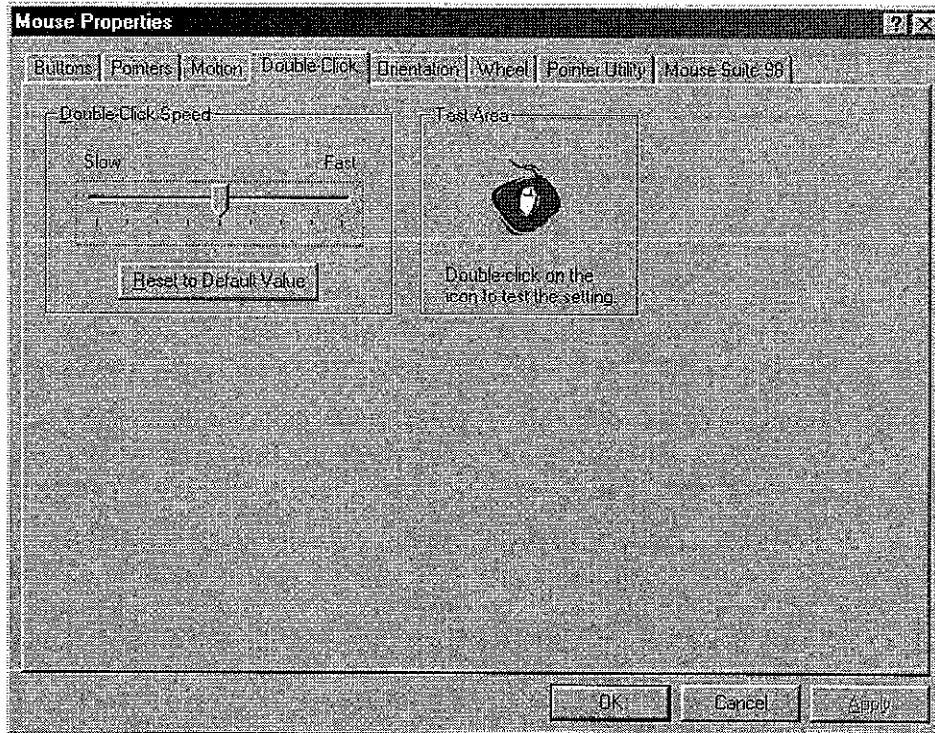
Magnifier

With Magnifier designated as a button function, you can magnify the screen area around your pointer with a click of the assigned button.

- First, specify a button in the **Button** list.

- Next, assign **Magnifier** to that button by selecting it from the **Function** list.
- Now, click on **Settings** to adjust the size, shape and power of the magnifier.
- Click on **OK** when finished.
- To use the Magnifier, simply click the assigned mouse button.

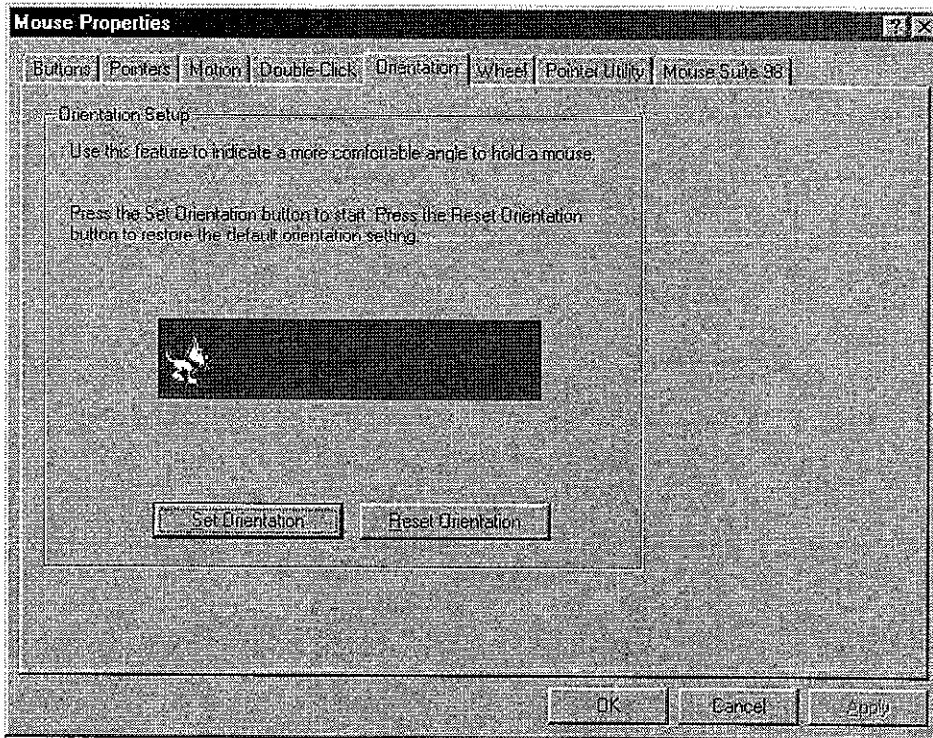
Double-click



The *Double-click* feature allows you to change the speed at which your software applications will respond to a double-click of the mouse button.

- To adjust the double-click speed, click and drag the **Slider** left (slower) or right (faster).
- To test double-click speed, double-click on the image in the test area.
- Reset the double-click speed setting by clicking on **Reset to Default Value**.
- To confirm your double-click speed setting, click on **Apply**.

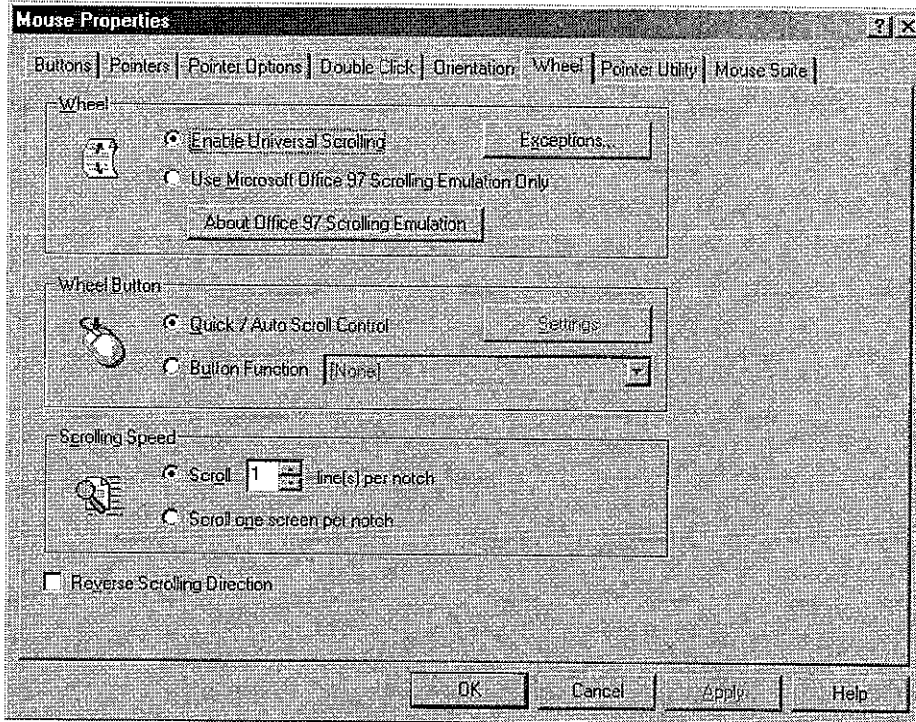
Orientation



The *Orientation* tab allows you to redefine the horizontal axis of your mouse so you can use it in your preferred position.

- To change the orientation of your mouse, click on the **Set Orientation** button and follow the on-screen instructions.
- To restore the default orientation status, click on the **Reset Orientation** button.
- To confirm your orientation settings, click on **Apply**.

Wheel



The Wheel tab lets you configure the scrolling settings of the wheel on your mouse.

Wheel

Mouse Suite offers **Universal Scrolling**, designed to work with most applications with standard scroll bars, including applications that are not compatible with Office 97 scrolling standard (e.g. WordPerfect 7.0, Netscape Navigator 3.0, and Microsoft Office 95, etc.). While in Universal Scrolling mode, the mouse will still perform the zooming functions available in Microsoft Office 97 if you press the CTRL key at the same time.

While in Universal Scrolling mode, if you wish to use the Office 97 scrolling emulation in some Office 97 compatible applications, you can specify those applications by using the **Exceptions** button.

Instead of the powerful Universal Scrolling feature, you may select the **Office 97 Scrolling Emulation Only** option. However, the scrolling functions will be restricted to Microsoft Office 97 compatible applications (e.g. Microsoft Internet Explorer 3.0/4.0). To learn more about the Office 97 Scrolling Standard, click on **About Office 97 Scrolling Emulation**.

- To enable Universal Scrolling, select **Enable Universal Scrolling**, then click on **Apply**.
- To use the pure Office 97 scrolling emulation, select **Use Microsoft Office 97 Scrolling Emulation Only**, and click on **Apply**.
- To specify an exception application, click on the **Exceptions** button. Next, click the **Add** button. Specify an application by typing its program path (e.g. c:\ie4\iexplorer.exe) or browse for applications by clicking on the **Browse** button. You can also use the Magnifying Glass tool to specify an application. Click, hold, and drag the **Magnifying Glass** tool to an open window of the application you want to add as an exception. Release the mouse button and

the application will appear in the Program Path text area. To remove an exception, select the application you wish to remove from the exceptions list and click on **Remove**. Click on **OK** to confirm.

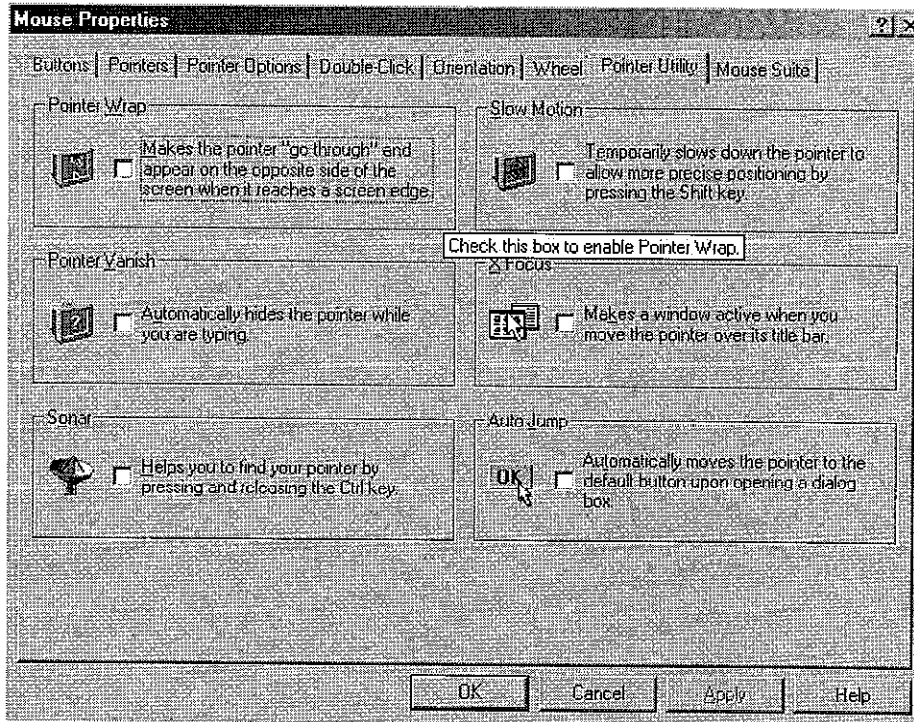
Wheel Button

Allow you to change the configuration of you wheel button.

Scrolling Speed

Allow you to change the scrolling speed in response to the wheel movement.

Pointer Utility



Opening the *Pointer Utility* page allows access to *Pointer Wrap*, *Pointer Vanish*, *Sonar*, *Slow Motion*, *X Focus* and *Auto Jump* functions.

- To enable Pointer Utility functions, check on the desired function(s) and click on **Apply**.

Pointer Wrap

When the pointer reaches the edge of the screen, it will automatically go through and appear on the other side.

Pointer Vanish

When Pointer Vanish is enabled, the pointer will be conveniently hidden from view while you are typing text. The pointer will automatically reappear when your mouse is used again.

Sonar

Helps you to locate your pointer if you are having difficulty finding it. Press and release the **Ctrl** key to activate the Sonar function. This function does not interfere with other Ctrl key functions.

Slow Motion

Allows you to temporarily slow down the pointer movement for precise positioning by pressing and holding the **Shift** key. This function does not interfere with other Shift key functions.

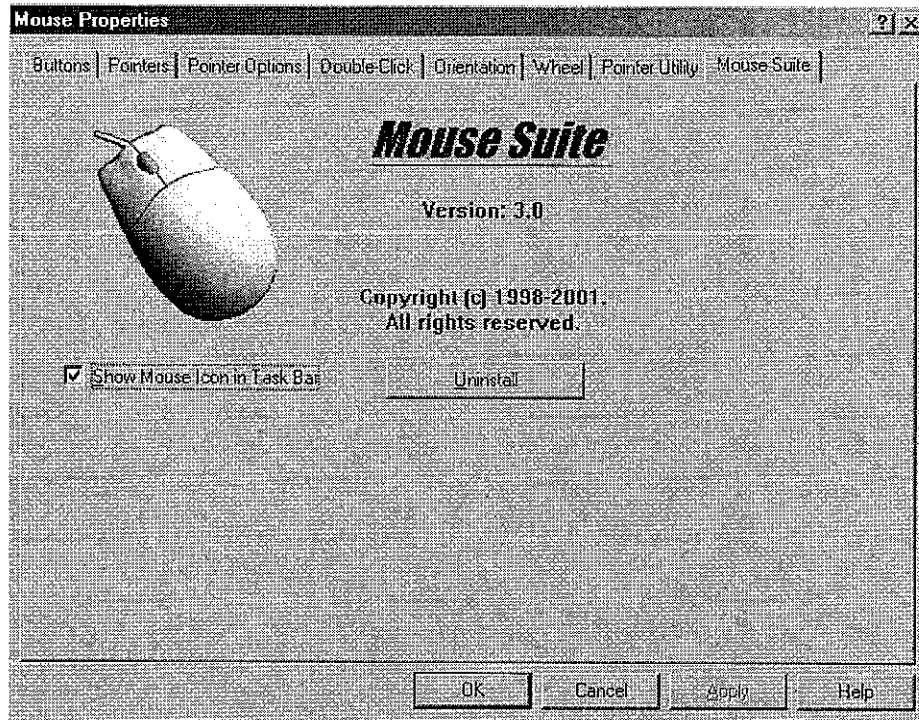
X Focus

Activates an open window simply by moving the pointer over its title bar. This function is useful if you want to alternate between several open windows without clicking.

Auto Jump

The pointer will automatically appear on the default button (e.g. **OK**) whenever a dialog box is opened.

Mouse Suite™



The Mouse Suite™ tab provides the miscellaneous information about the Mouse Suite™ software, a link to our web site for online product support as well as an uninstall utility and a Task Bar Mouse Icon option.

Uninstall

- To uninstall Mouse Suite™, click on the **Uninstall** button and follow the on-screen instructions.

Task Bar Mouse Icon

- To add the Mouse Suite™ Icon to the Windows Task Bar, click on **Show Mouse Icon in Task Bar**, then click on **Apply**.

Troubleshooting

Reviewing the following section may help you diagnose any problems you are having with the operation or installation of your new mouse. If the problem you are experiencing is not referred to below, or the suggested solutions do not solve the problem, please contact our Technical Support staff.

- **Why isn't my pointer moving smoothly?**
Your mouse ball and ball cage may require cleaning. Refer to the Maintenance section for proper cleaning procedures.
- **Why isn't the pointer responding to my mouse movement?**
Your mouse is not being properly detected.
 - Make sure your mouse cable is connected properly to the correct port prior to installing Mouse Suite™ software.
 - Your serial or PS/2 port may be improperly configured (refer to your computer's documentation for proper configuration).
 - The IRQ/address settings of other system devices (e.g. modem card) may be in conflict with your mouse's settings. Check the IRQ/address settings for conflicts, and change them if required.
- **Why aren't the wheel functions of my PS/2 mouse working with my notebook?**
On your notebook, you may need to disable the trackball or touchpad in the BIOS and enable the external PS/2 mouse port in order to successfully use all of your mouse's functions.

Maintenance

If the pointer skips or move abnormally, clean the ball of your mouse by following these steps:

1. Remove the retainer ring to remove the ball.
2. Wipe the ball with a clean, lint-free cloth, and then blow carefully into the ball-cage to dislodge dust and lint.
3. If the rollers are dirty, clean the rollers using a cotton swab moistened lightly with isopropyl (rubbing alcohol). After cleaning, make sure the rollers are still centered in their channels. Make sure that fluff from the swab is not left on the rollers.
4. Replace the ball and retainer ring.

Technical Support

If you are experiencing difficulty with the installation or use of our product, please contact our Technical Support staff. We will be more than happy to assist you with any problems you may have.

Contact us by **Email:**

Help@mail.primax.com.tw

Visit our **Website:**

<http://www.primaxelec.com>