



TRUE COMFORT III

This manual covers the following models:

- T705



Congratulations on purchasing a new thermostat. This thermostat was designed to the highest reliability and ease of use standards. Thank you for choosing Pro1.



Caution:

Equipment damage hazard

Do not operate the cooling system if the outdoor temperature is below 50° F (10° C) to prevent possible compressor damage.

Table of Contents

	Page
Thermostat Quick Reference	2
Thermostat Operation	3
Programming	4
Contact Us and Warranty Registration	6

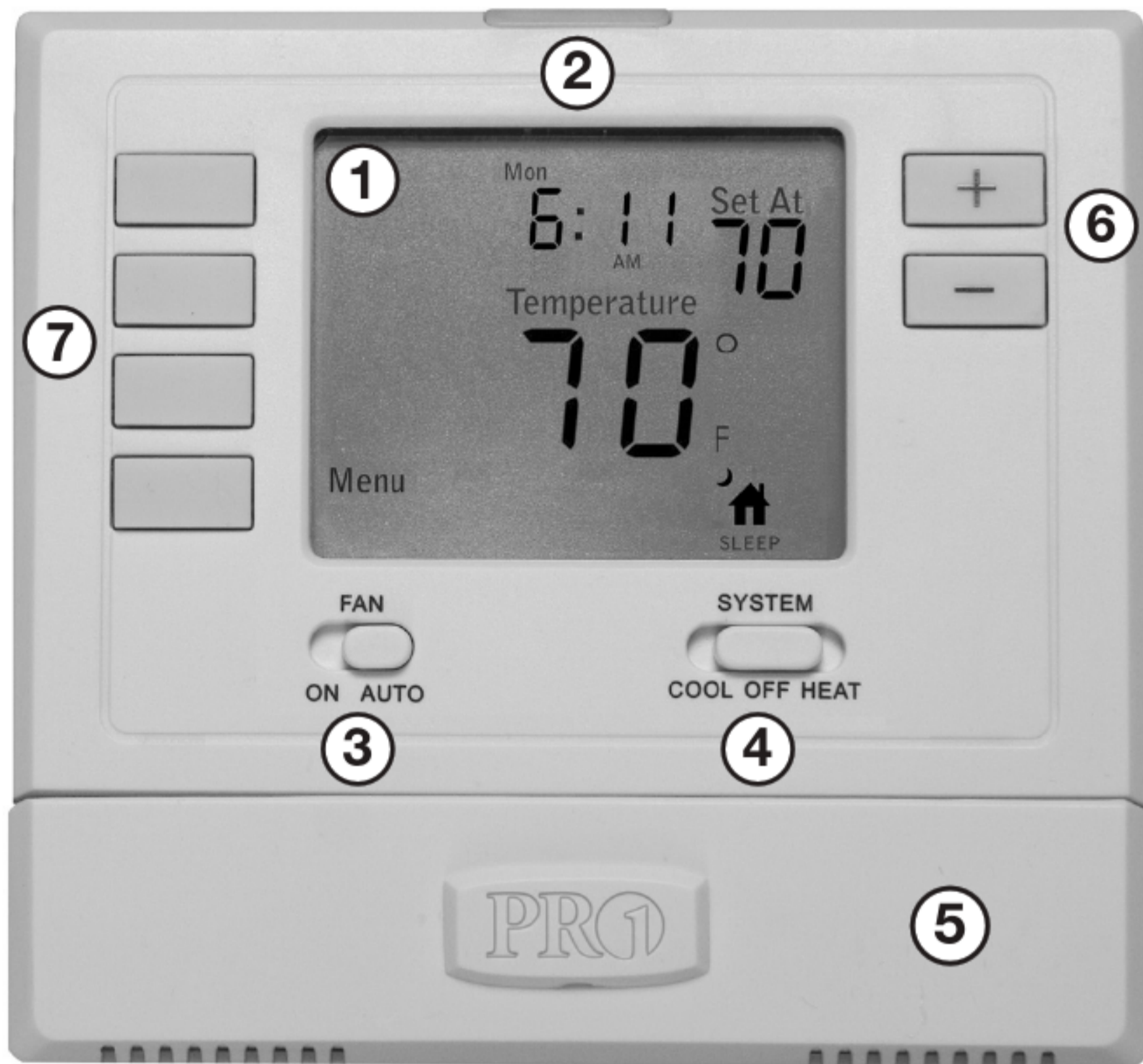
Need Help?

For assistance with this product please visit <http://www.pro1iaq.com> or call Pro1 Customer Care toll-free at 888-Pro1iaq (776-1427) during normal business hours (Mon-Fri 9 AM - 6 PM Eastern)

Una versión española de este manual puede ser descargada en www.pro1iaq.com

OPERATING MANUAL THERMOSTAT QUICK REFERENCE

Getting to know your thermostat



- ② **Glow in the Dark Light Button**
- ③ **Fan Switch**
- ④ **System Switch**
- ⑤ **Easy Change Battery Door**
- ⑥ **Setpoint Buttons**
- ⑦ **User Buttons**

① LCD

Days of the week and time

Displays the user selectable setpoint temperature.

Hold is displayed when thermostat program is permanently overridden.


System operation indicators: The **COOL**, **HEAT** or **FAN** icon will display when the **COOL**, **HEAT** or **FAN** is on. NOTE: The compressor delay feature is active if these icons are flashing. The compressor will not turn on until the 5 minute delay has elapsed.

Programmable Time Period Icons: This thermostat has 4 programmable time periods per day.

Low Battery Indicator: Replace batteries when indicator is shown.

Indicates the current room temperature.

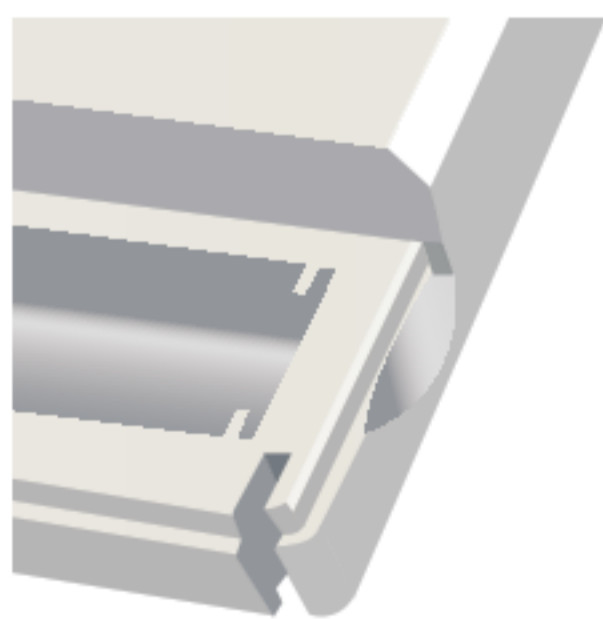
Button options



Important:

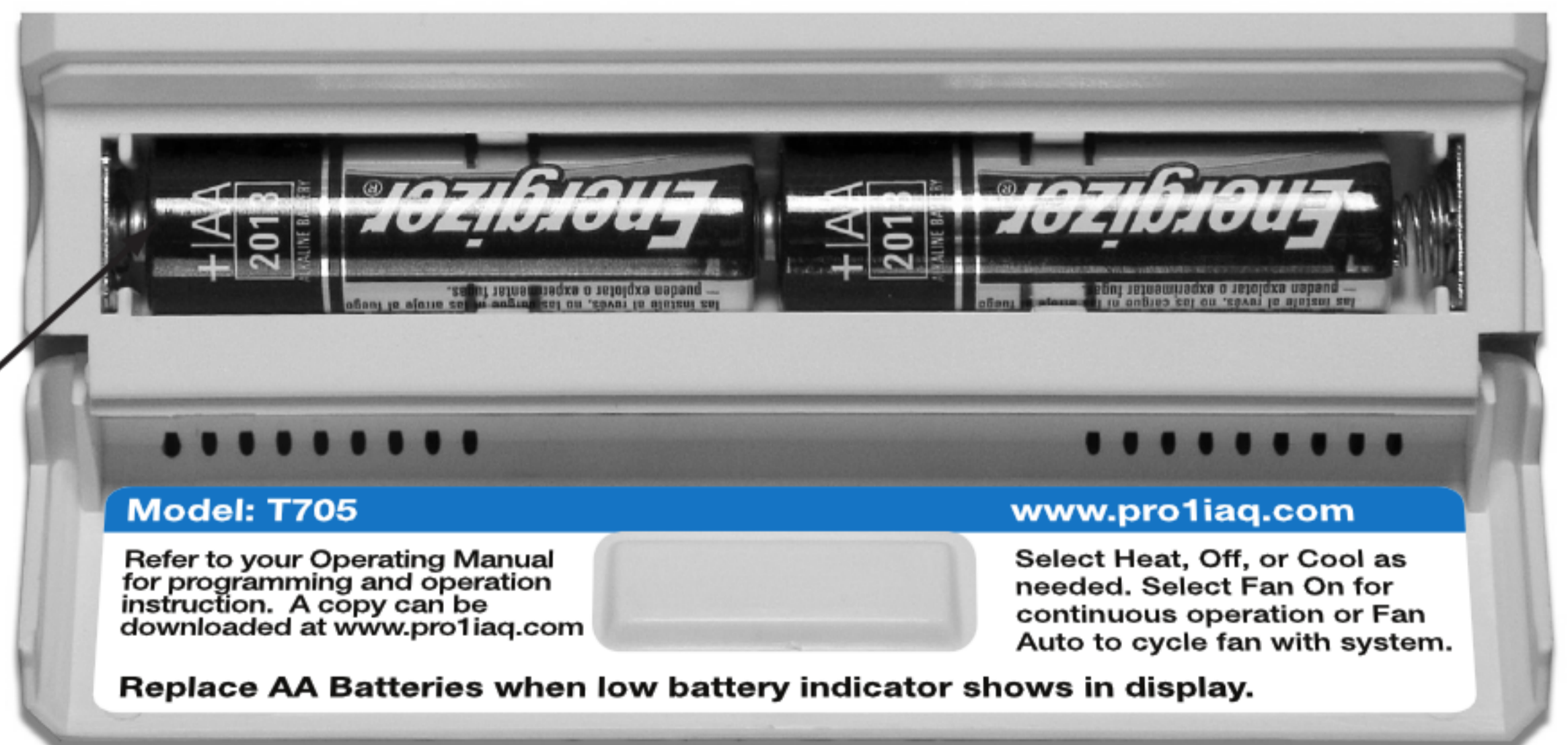
The low battery indicator is displayed when the AA battery power is low. If the user fails to replace the battery within 21 days, the thermostat display will only show the low battery indicator as a final warning before the thermostat becomes inoperable.

Battery door information



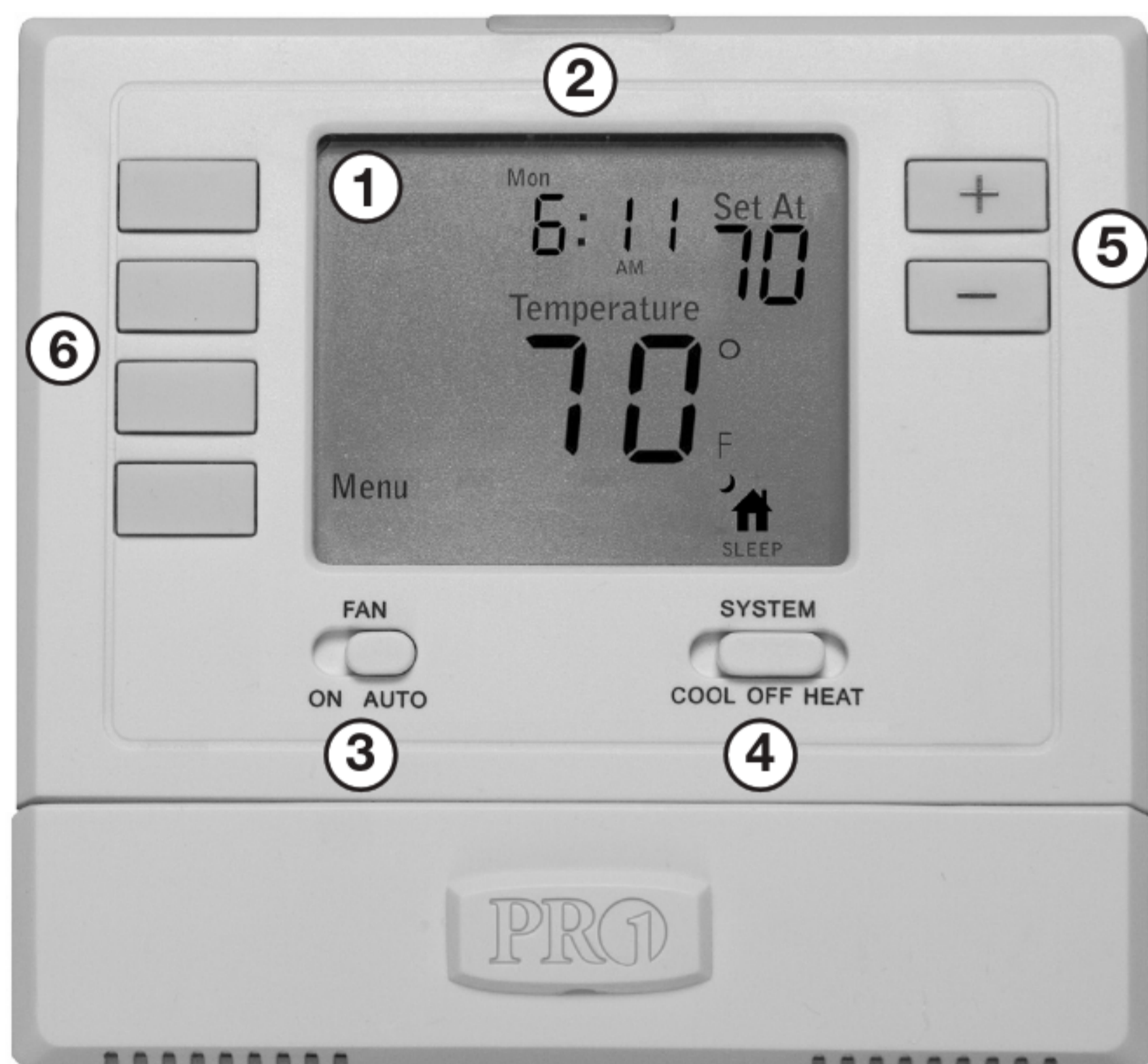
Use the finger bevel on the lower portion of the side of the thermostat to open the easy access battery door.

Insert 2 AA Alkaline batteries (included).




Simple operating instructions are found on the back of the battery door.

Easy to use controls



Caution:

When the battery icon  appears replace your AA batteries immediately. Failure to do so may result in your heating & cooling system becoming inoperable.

① LCD Display:

See page 2 for details about this display read out and icons.

② Glow in the Dark Light Button:

The glow in the dark light button will self illuminate for several hours after exposure to ambient light. This button turns on the display light when pressed.

③ Fan Switch:

Select **ON** or **AUTO**. **ON** will run the fan continuously. **AUTO** will cycle the fan on only when the heating or cooling system is on.

④ System Switch:

Selects the operation mode of your HVAC system. Selecting **HEAT** turns on the heat mode. Selecting **COOL** turns on the air conditioning mode. Selecting **OFF** turns both heating and cooling off.

⑤ Temperature Setpoint Buttons:

Press the + or - buttons to select the desired room temperature.

⑥ User Buttons:

Use these buttons to set up your programming options. Refer to the next page for instructions.

Set Time

Follow the steps below to set the current time:

1. Press **MENU**
2. Press **SET TIME**
3. Day of the week will be flashing.
Use the or key to select the current day of the week.
4. Press **NEXT STEP**
5. The current hour is flashing.
Use the or key to select the current hour. When using 12-hour time, make sure the correct a.m. or p.m. choice is selected.
6. Press **NEXT STEP**
7. Minutes are now flashing.
Use the or key to select current minutes.
8. Press **DONE** when completed



Important:

You will see a **TECH SET** option after the **MENU** key is pressed.

This **TECH SET** key is for installer configuration and should **NOT** be changed unless you consult your Professional Heating and Air Conditioning Technician.

Set Program Schedule

To customize your program schedule, follow these steps
Weekday:

1. Select **HEAT** or **COOL** from the system switch.
Note: You have to program heat and cool each separately.
2. Press **MENU**
3. Press **SET SCHED.** Note: Monday-Friday is displayed and the **WAKE** icon is shown. You are now programming the wake time period for the weekday setting.
4. Time is flashing. Use the or key to make your time selection for the weekday **WAKE** time period.
5. Press **NEXT STEP**
6. The setpoint temperature is flashing. Use the or key to make your setpoint selection for the weekday wake period.
7. Press **NEXT STEP**
8. Repeat steps 4 through 7 for weekday **LEAVE** time period, for weekday **RETURN** time period, and for weekday **SLEEP** time period.

Saturday:

9. Repeat steps 4 through 7 for Saturday **WAKE** time period, for Saturday **LEAVE** time period, for Saturday **RETURN** time period, and for Saturday **SLEEP** time period.

Sunday:

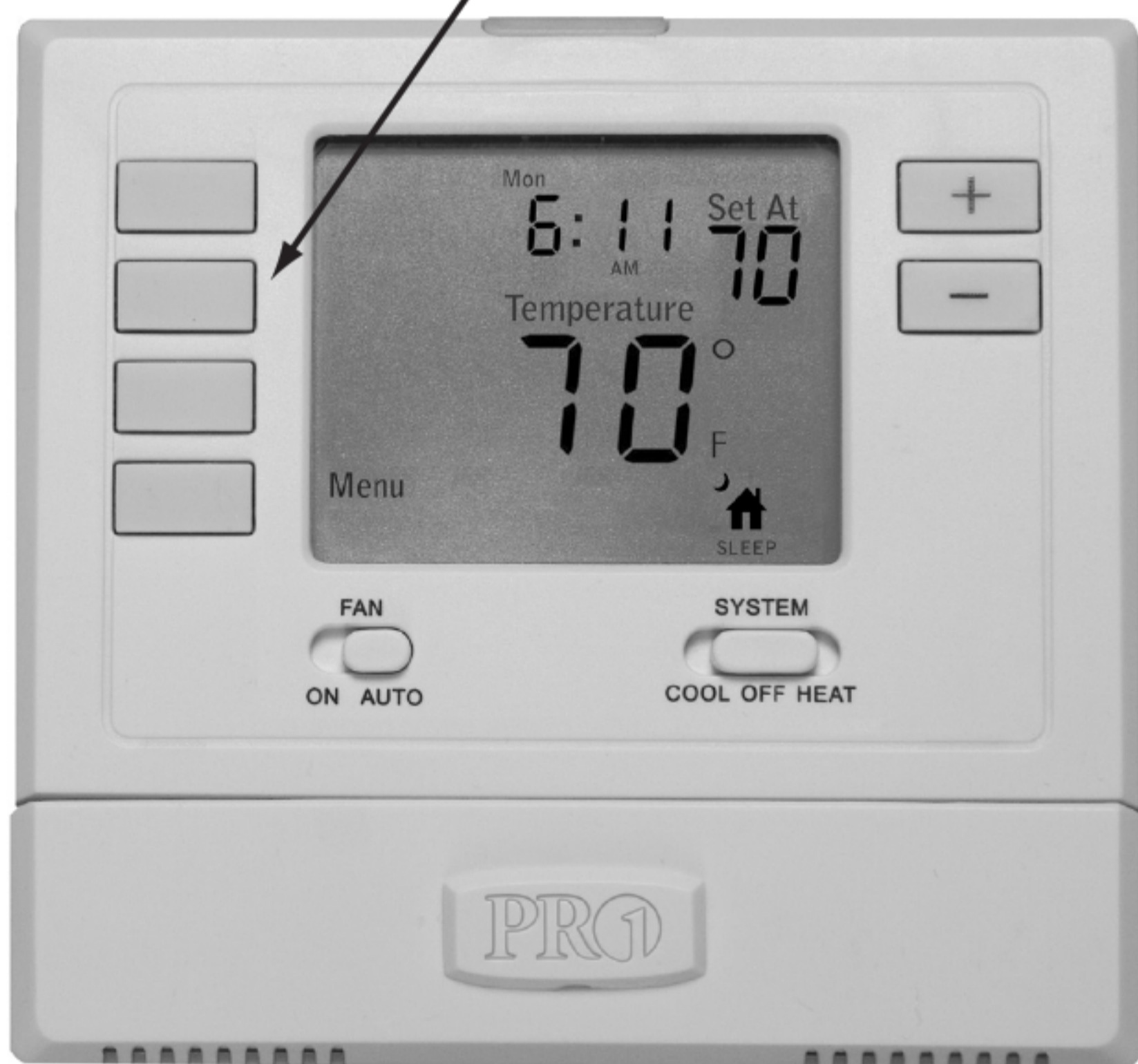
10. Repeat steps 4 through 7 for Sunday **WAKE** time period, for Sunday **LEAVE** time period, for Sunday **RETURN** time period, and for Sunday **SLEEP** time period.

Filter Change Reminder

If your installing contractor has configured the thermostat to remind you when the air filter needs changed, you will see **FILT** in the display when your air filter needs changed. **FILT** will be shown in the display after your system has run long enough to require an air filter change.

Resetting the filter change reminder: When **FILT** reminder is displayed, you should change your air filter and reset the reminder by holding down the second button from the top left side of the thermostat for 3 seconds.

Hold down for 3 seconds, to reset filter reminder.



Temporary and Permanent Hold Feature

Temporary hold: The thermostat will display **HOLD** and **RUN SCHED** on the left of your screen when you press the **+** or **-** key. If you do nothing, the temperature will remain at this setpoint temporarily until the next program period begins. Your program setpoint will then replace your temporary setpoint.

Permanent hold: If you press **HOLD**, you will see **HOLD** appear below the setpoint temperature in the display. The thermostat will now permanently stay at this setpoint and can be adjusted using the **+** or **-** keys.

To return to program: Press **RUN SCHED** to exit either temporary or permanent hold.

Contact Us Information

Pro1 IAQ Inc.

1111 S. Glenstone
Suite 2-100
Springfield, MO 65804

Toll-free: 1-888-Pro1iaq (776-1427)

Toll Number (Outside the USA): 330-821-3600

Web: <http://www.pro1iaq.com>

Hours of Operation: Monday - Friday 9 AM - 6 PM Eastern

Warranty Registration:

Your new Pro1 thermostat has a 5 year limited warranty. You must register your warranty within 60 days of installation. You can register your new thermostat in 2 ways.

① Go to www.pro1iaq.com, select warranty registration and fill out a short registration form.

- or -

② Complete the form below and mail it to the address shown.

Pro1 IAQ Warranty Registration:

Name: _____

Address: _____

City: _____

State: _____

Zip: _____

Thermostat Model: _____

Date Installed: _____

Complete form and mail to:

Pro1 IAQ Inc.

1111 S. Glenstone
Suite 2-100
Springfield, MO 65804