

Wireless 54Mbps MIMO Mini-PCI Adapter

User's Manual

USA

Compliance statement to FCC

This module complies with part 15 of the FCC rules. Operation is subject to the following conditions: (1) This device may not cause harmful interference, and (2) this device must accept any interference received, including interference that may cause undesired operation.

4.1 RF exposure compliance This module may be installed into any end product in mobile device applications. Because the module only radiates very low power levels, it complies with RF exposure requirements.

Requirements to end product

The following provisions for end product will be required on the FCC regulation, part 15.

(1) Antenna

Pro-Nets wishes that our customer shall use the WM71RL1 module without any modifications including antenna. If customer use a unique antenna, the FCC certification is required for the end product.

(2) Markings

To satisfy FCC exterior labeling requirements, the following text must be placed on the exterior of the end product.

Contains Transmitter Module FCC ID: RXZ-WM71RL1

Any similar wording that expresses the same meaning may be used.

(3) Caution to user for modification

The following caution is expressed on the user manual.

The changes or modifications not expressly approved by the party responsible for compliance could void the user's authority to operate the device.

(4) Compliance statement to FCC

The following statement is expressed on the user manual.

This module complies with part 15 of the FCC rules. Operation is subject to the following conditions: (1) This device may not cause harmful interference, and (2) this device must accept any interference received, including interference that may cause undesired operation.

Copyright

1999 All Rights Reserved.

No part of this document can be copied or reproduced in any form without written consent from the company.

Trademarks:

All trade names and trademarks are the properties of their respective companies.

Revision History

Revision	History
V1.0	First release

Caution: This user guide information is only provided to OEM or module installer.

Do not supply to the end user.



Revision History

Rev	Date	Maintain	Descriptor
0.0.1.0	03/31/05	Kathy Ko	<ol style="list-style-type: none">1. Create RT61 ATE Driver2. Start Frame OID change to RT_OID_802_11_START_TX_FRAMES3. For High Channel : TX power value range is 0~36

Ralink Confidential



Content

1. SYSTEM REQUIREMENT.....	3
2. INSTALL ATE DRIVER	3
3. RACONFIG UTILITY	9
3.1 BUILD RACONFIG UTILITY.....	9
3.1.1 Set Include file path.....	9
3.1.2 Set Library file path	10
3.1.3 Set DDK path	11

1. System Requirement

- Windows 2000/XP
- Microsoft Virtual C++ 6.0
- Platform SDK
- DDK 3790

2. Install ATE Driver

Step 1 : Insert the RT61 Card bus / Mini PCI / PCI.



Figure 2-1 Search New device.

Step 2 : Select Advance installation.

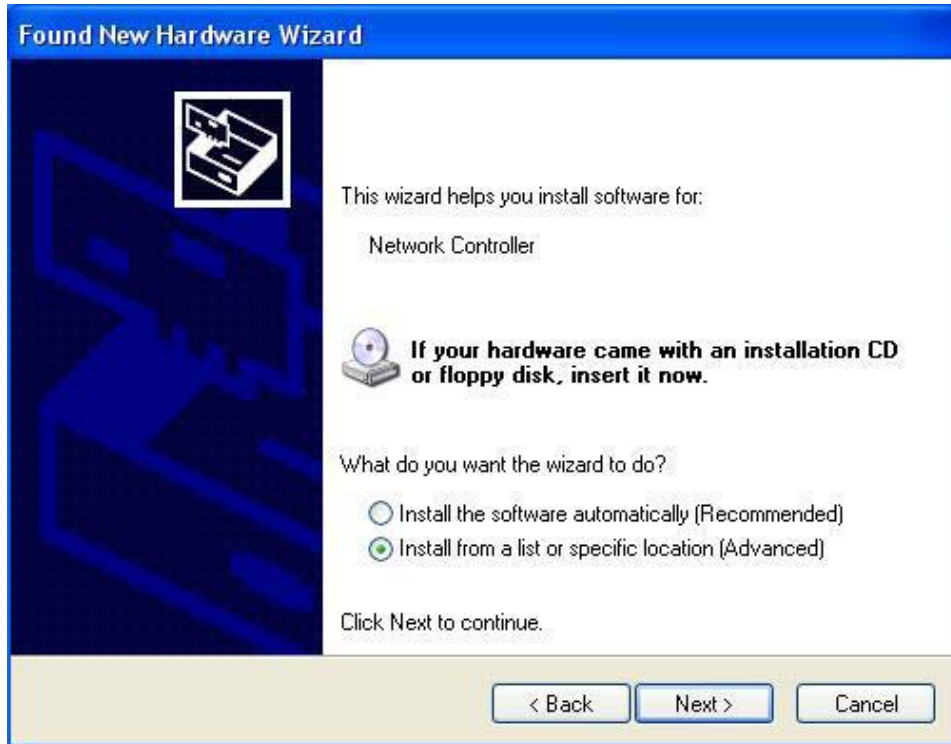


Figure 2-2 Select Advance installation

Step 3 : Select manual installation.

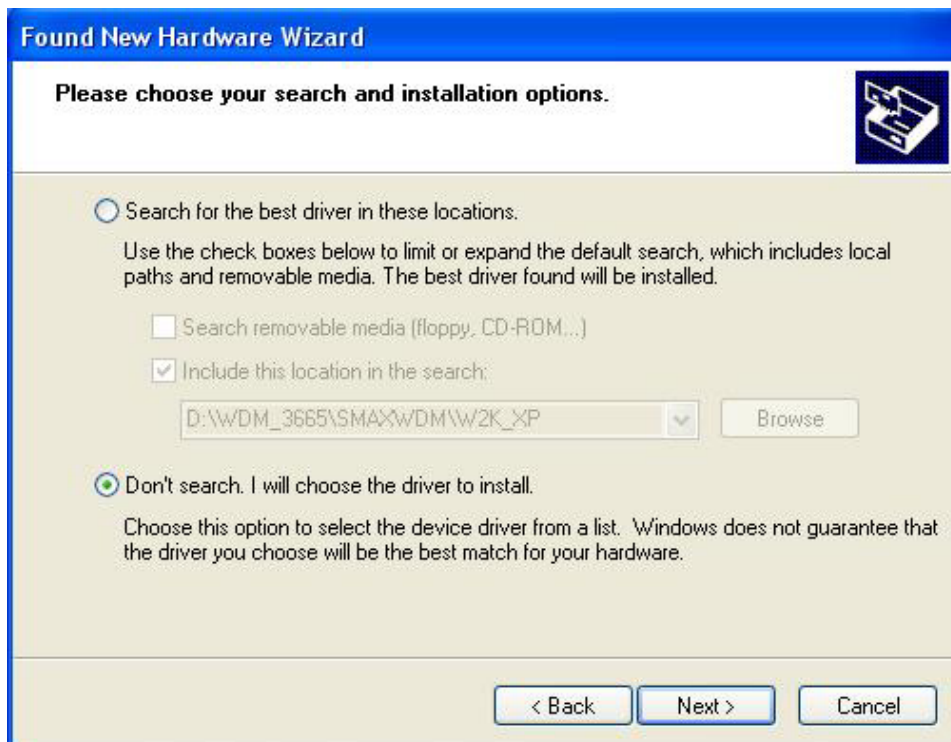


Figure 2-3 Select manual installation

Step 4 : Select device type : Network Adapter.



Figure 2-4 Select device type

Step 5 : Select device driver from "Have Disk"



Figure 2-5 Select device driver from "Have Disk"



Step 6 : Select the ATE driver directory

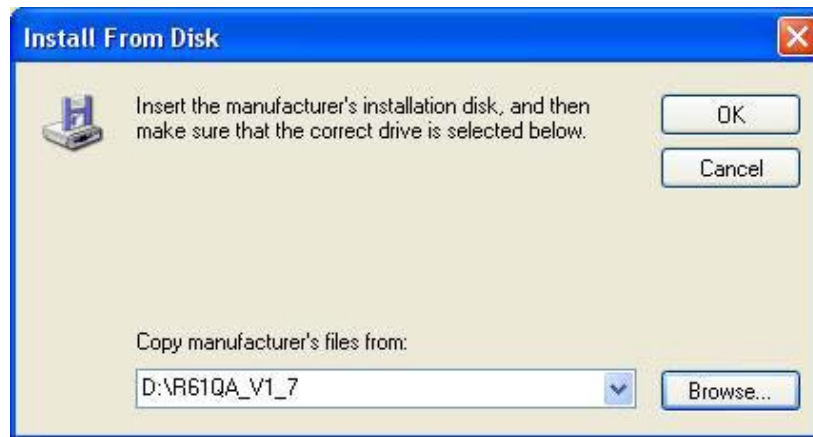


Figure 2-6 Select the ATE driver directory

Step 7 : Select Network Adapter.

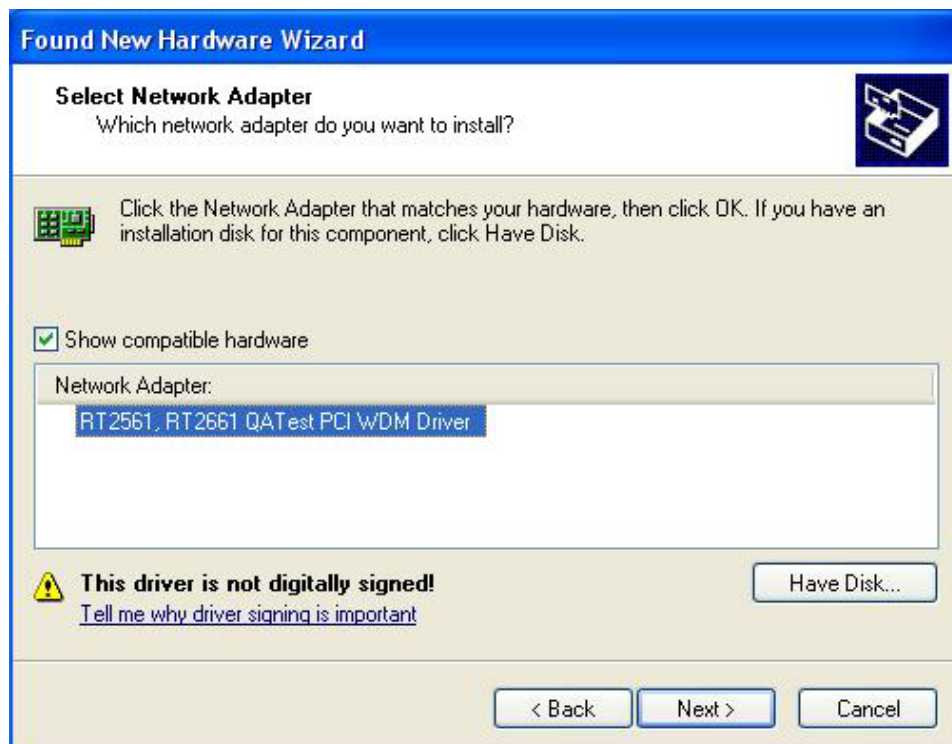


Figure 2-7 Select Network Adapter.



Step 8 : Pop up the warning wizard for asking you if you really want to install the “RT2561, RT2661 ATE Driver”. Press “Continue Install”.



Figure 2-8 asking you if you really want to install the driver

Step 9 : Installing...

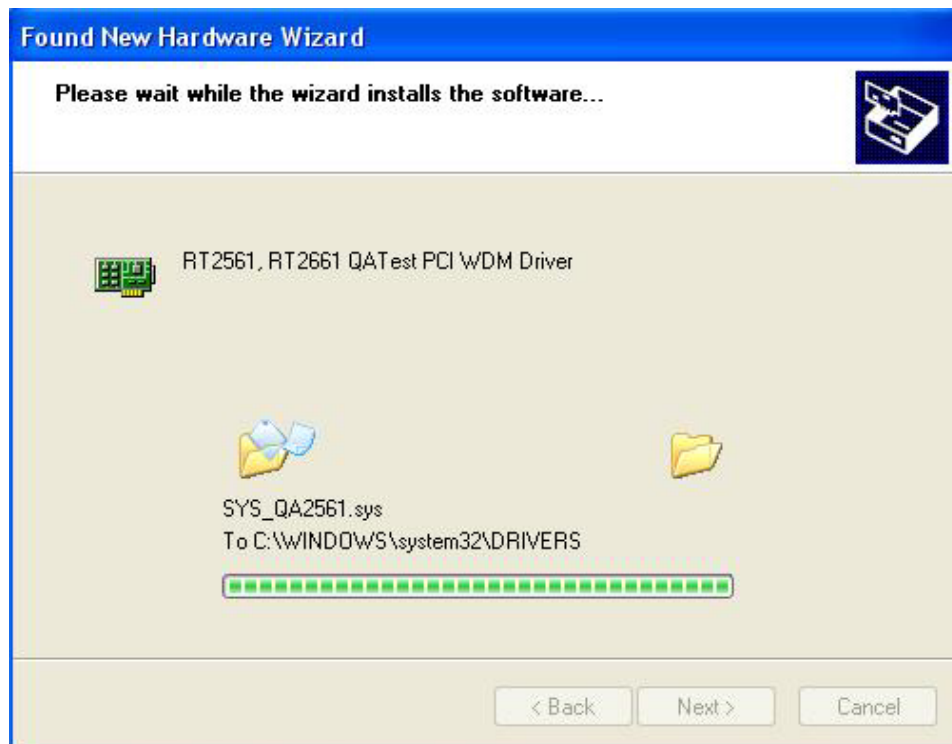


Figure 2-9 Installing



Step 10 : Complete the driver installation.



Figure 2-10 Complete the driver installation.

Step 11 : Open Device Manager to check whether the ATE driver installs success.

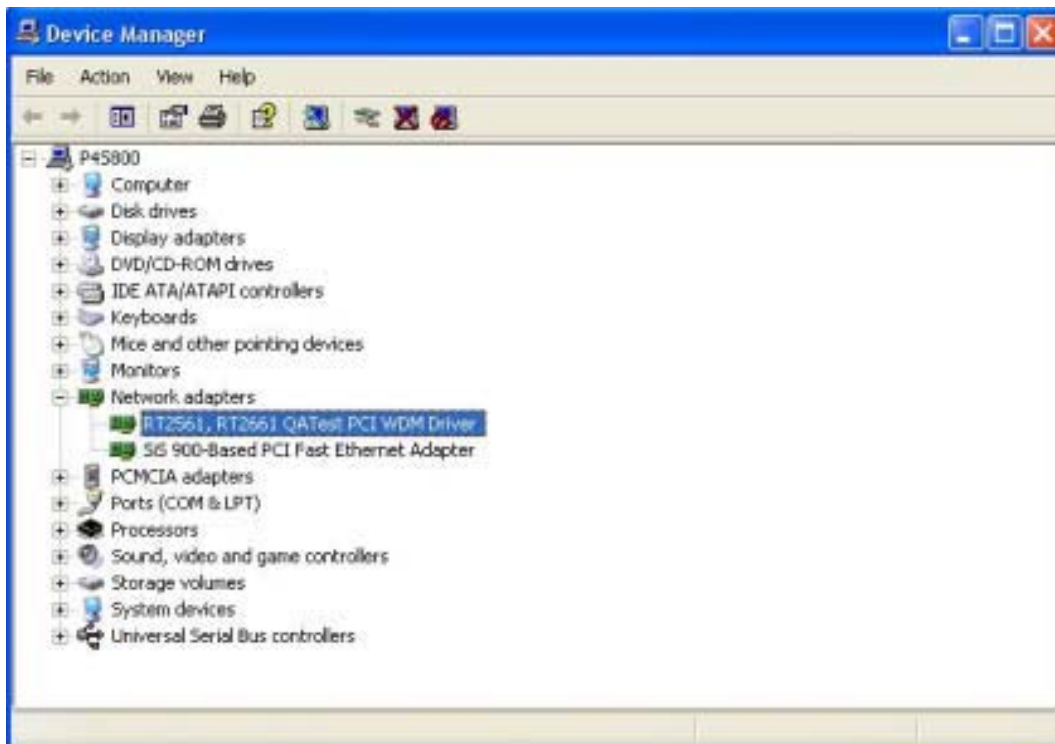


Figure 2-11 Open Device manager to check whether success

3. RaConfig Utility

3.1 Build RaConfig Utility

3.1.1 Set Include file path

Step 1 : Select Tools→Options

Step 2 : Insert the Microsoft SDK's Include file path

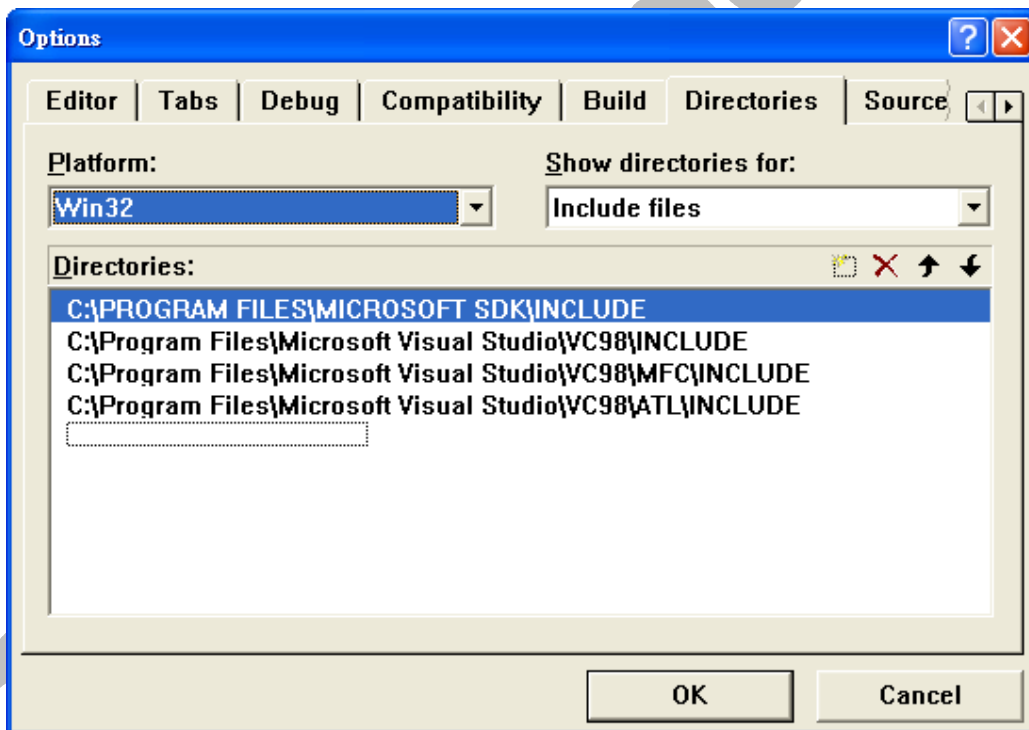


Figure 3-1 Set Include file path

3.1.2 Set Library file path

Step 1 : Select Tools→Options

Step 2 : Insert the Microsoft SDK's Library file path

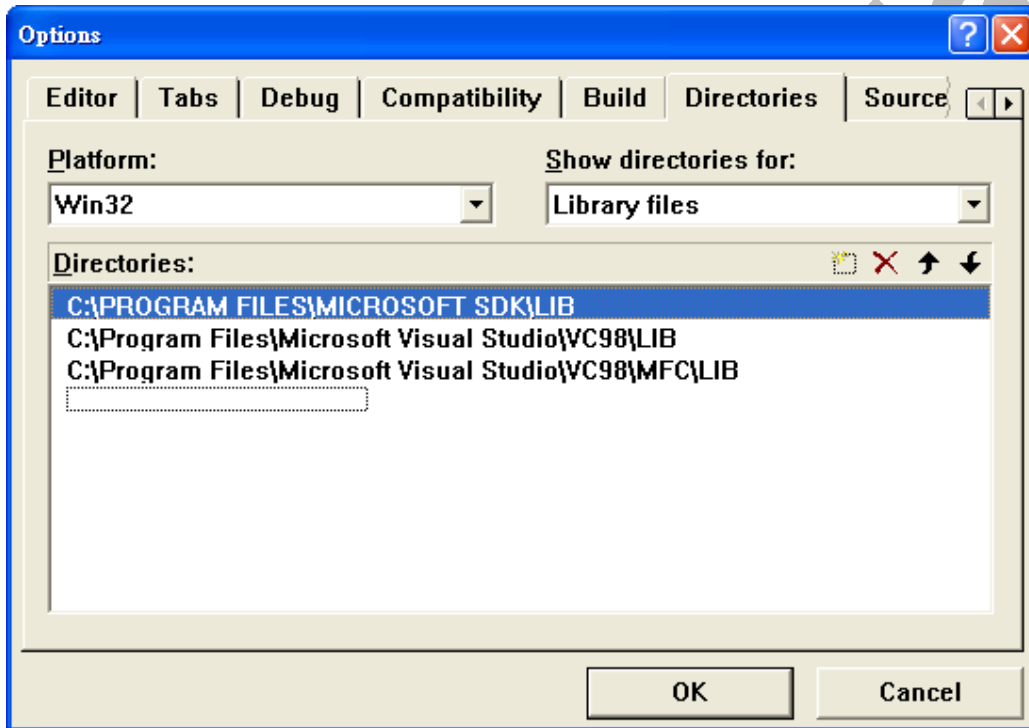


Figure 3-2 Set Library file path

3.1.3 Set DDK path

Step 1 : Select Project → Settings

Step 2 : Make sure the path of Windows DDK 3790 is correct in “C/C++” tag of Project Settings..

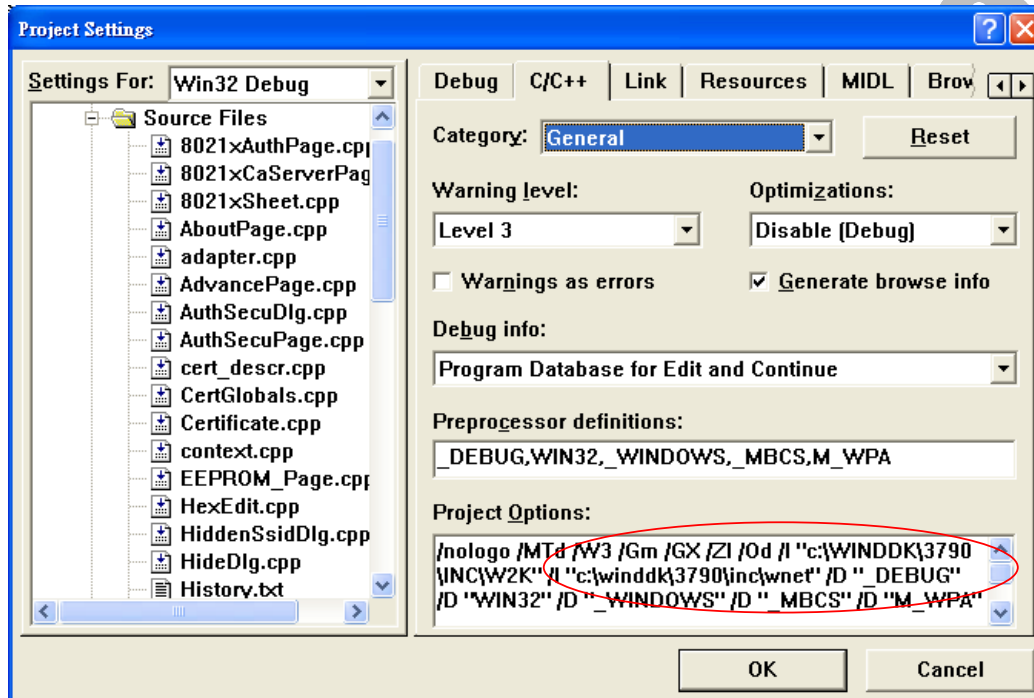


Figure 3-3 Check DDK path in C/C++ tag

Step 3 : Make sure the path of Windows DDK 3790 is correct in “Link” tag of Project Settings.

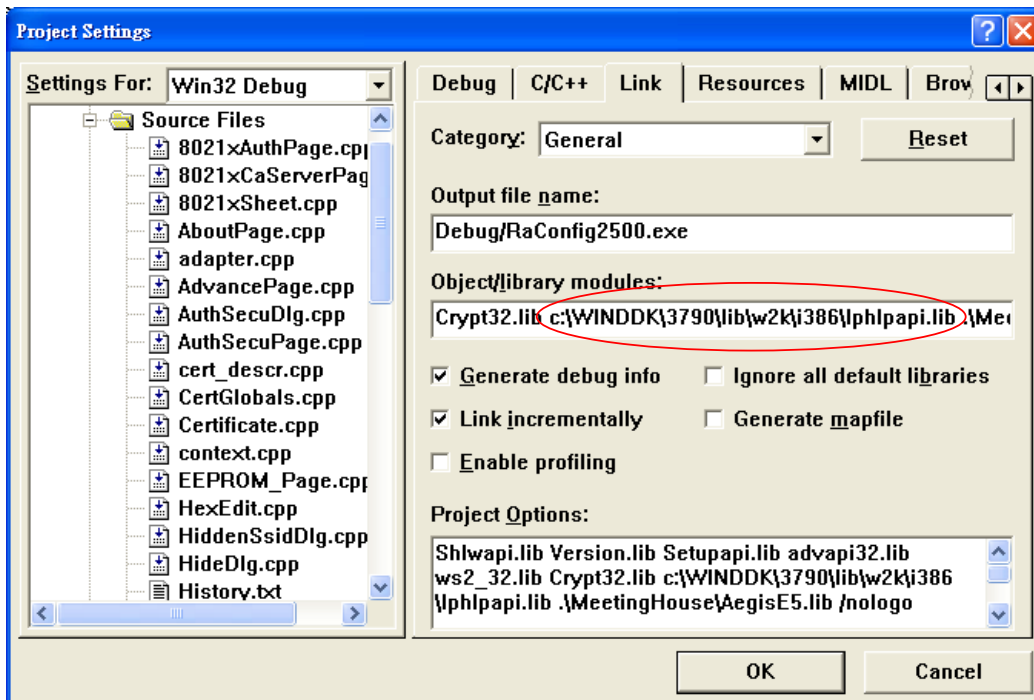


Figure 3-4 Check DDK path in Link tag