

IEEE 802.11n Wireless PCI Express Adapter

User's Manual

December 2010

FCC Warning

This equipment has been tested and found to comply with the limits for a Class C digital device, pursuant to part 15 of the FCC Rules. These limits are designed to provide reasonable protection against harmful interference in a residential installation. This equipment generates, uses, and can radiate radio frequency energy and, if not installed and used in accordance with the instructions, may cause harmful interference to radio communication. However, there is no guarantee that interference will not occur in a particular installation. If this equipment does cause harmful interference to radio or television reception, which can be determined by turning the equipment off and on, the user is encouraged to try to correct the interference by one or more of the following measures:

- Reorient or relocate the receiving antenna.
- Increase the separation between the equipment and receiver.
- Connect the equipment into an outlet on a circuit different from that to which
- Consult the dealer or an experienced radio/TV technician for help. the receiver is connected.

FCC Caution: Any changes or modifications not expressly approved by the party responsible for compliance could void the user's authority to operate this equipment.

This device complies with Part 15 of the FCC Rules. Operation is subject to the following two conditions: (1) This device may not cause harmful interference, and (2) this device must accept any interference received, including interference that may cause undesired operation.

IMPORTANT NOTE:

FCC Radiation Exposure Statement:

This equipment complies with FCC radiation exposure limits set forth for an uncontrolled environment. This equipment should be installed and operated with a minimum distance of about eight inches (20cm) between the radiator and your body.

This transmitter must not be co-located or operated in conjunction with any other antenna or transmitter.

IMPORTANT NOTE:

In the event that these conditions cannot be met (for example certain laptop configurations or co-location with another transmitter), then the FCC authorization is no longer considered valid and the FCC ID cannot be used on the final product. In these circumstances, the OEM integrator will be responsible for re-evaluating the end product (including the transmitter) and obtaining a separate FCC authorization.

Revision History

Revision	History
V1	1st Release

All brand and product names mentioned in this manual are trademarks and/or registered trademarks of their respective holders.

CONTENTS

1. INTRODUCTION.....	4
1.1 LED INDICATOR	4
1.2 PACKAGE CONTENTS	4
1.3 BEFORE YOU START	4
1.4 HARDWARE INSTALLATION.....	4
2. DRIVER INSTALLATION	5
3. CONNECT TO A NETWORK	8

1. Introduction

This is a wireless PCI Express adapter that delivers unrivaled wireless performance for your Desktop PC. It complies with IEEE 802.11n draft standard and backward compatible with IEEE 802.11b/g. With this adapter, you can easily upgrade your Desktop PC wireless connectivity. Get a better Internet experience with a faster wireless connection so you can enjoy smooth digital phone calls, gaming, downloading, and video streaming.

This product is made in ISO9001 approved factory and complies with FCC part 15 regulations and CE approval.

1.1 LED Indicator

LED	Light Status	Description
ACT	Blinking	Data is being transmitted or received.

1.2 Package Contents

- One Wireless PCI Express Adapter
- Two External Antennas
- One CD-ROM (Drivers, User's Manual)

If any of the above items is missing, contact your dealer immediately.

1.3 Before you start

You must have the requirements as follow,

- A computer with an available PCI Express slot
- At least a 300MHz processor and 32MB memory
- Windows XP/Vista/Win7 support
- A CD-ROM drive
- Wireless PCI Express Adapter properly installed

1.4 Hardware Installation

STEP1: Turn off your computer and remove its cover

STEP2: Insert the wireless PCI Express card to an available PCI Express slot firmly.

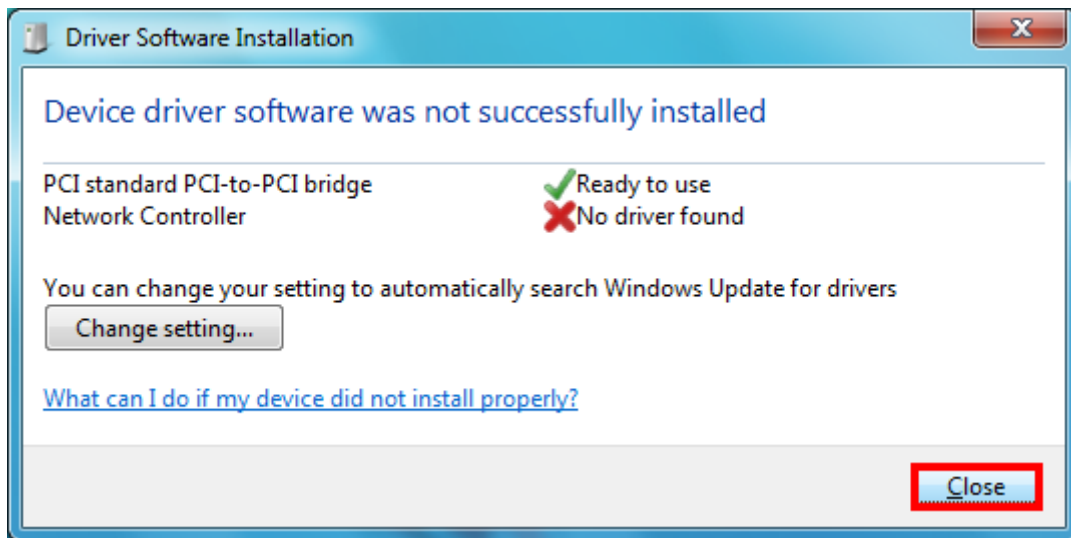
STEP3: Secure this card to the rear of the computer chassis and put back the cover.

STEP4: Secure the antenna to antenna connector of the card.

STEP5: Turn on the computer.

2. Driver Installation

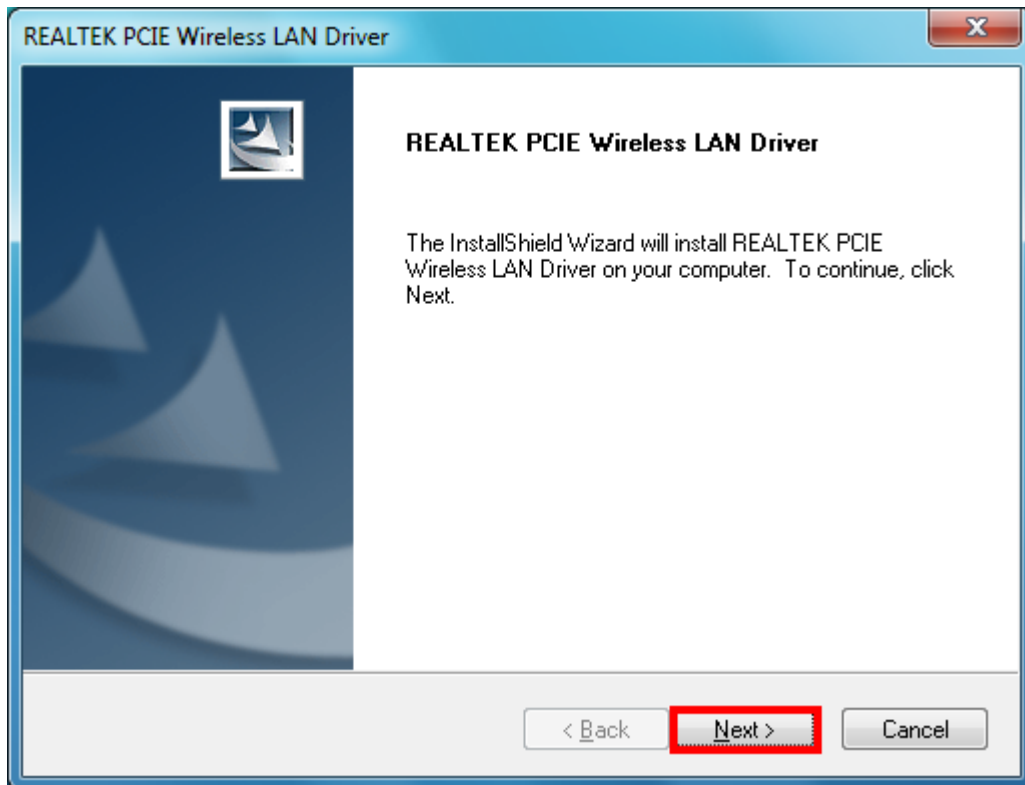
STEP1: Found New Hardware Wizard is displayed after the adapter is installed and the computer is restarted. Please click **Close (or Cancel)** to continue.



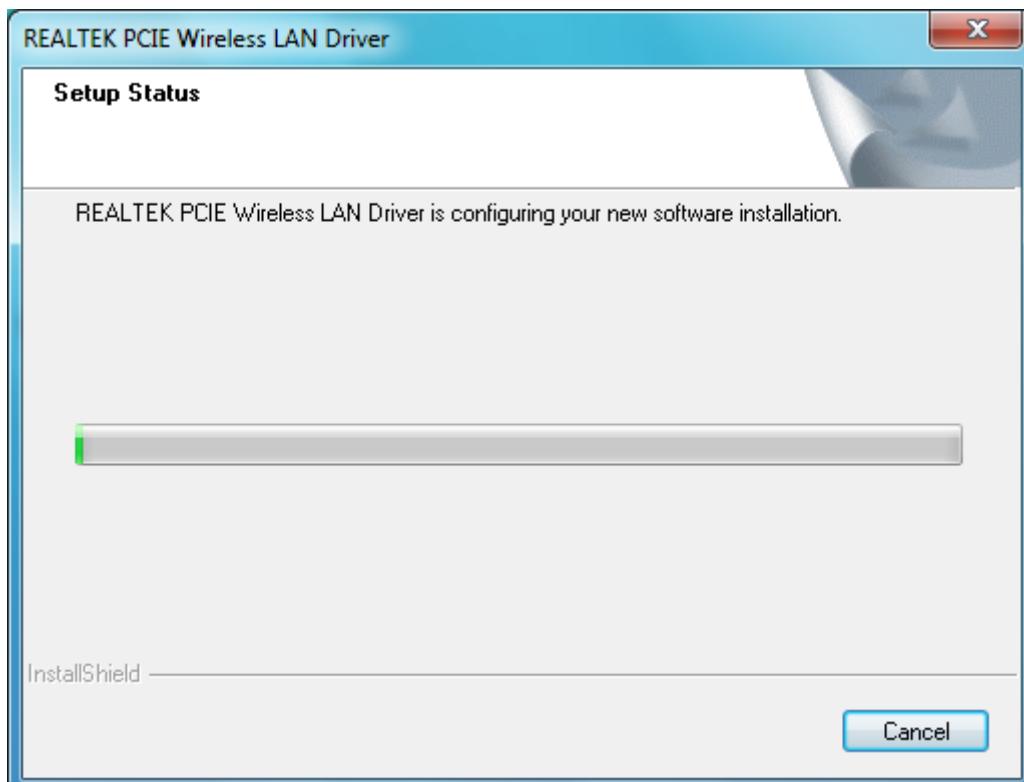
STEP2: Insert Installation CD into CD-ROM drive then windows below will appear. Click **Install Driver** to begin device driver installation.



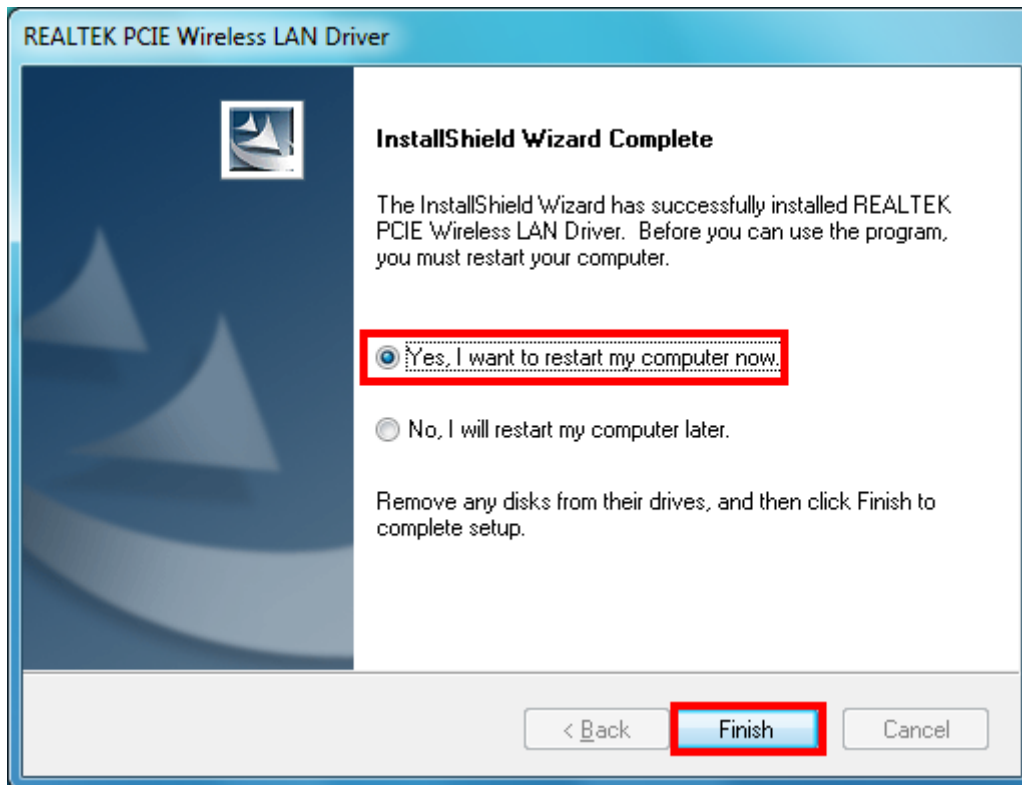
STEP3: The Install Wizard screen will display as below and click **Next** to begin driver installation.



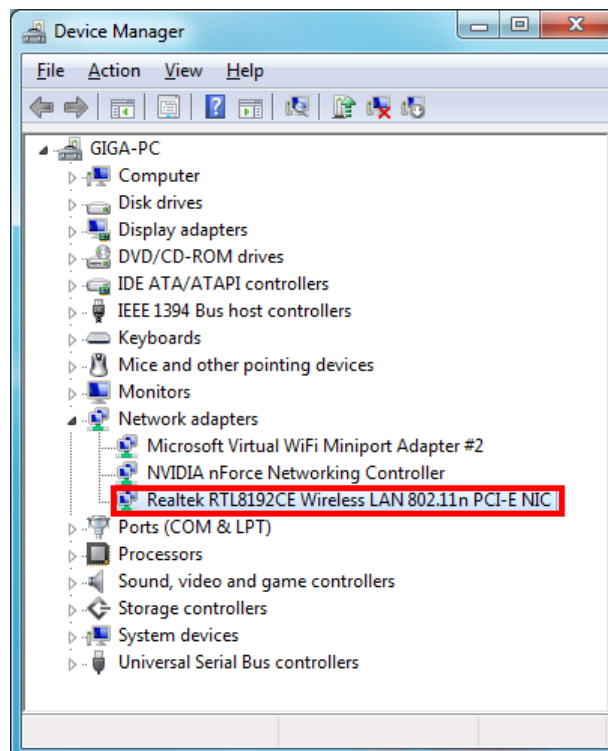
STEP4: Please wait for a while during the adapter is configuring your new software installation.



STEPS: After the setup wizard has successfully installed wireless LAN, choose **Yes, I want to restart my computer now** and click **Finish** to exit the wizard.

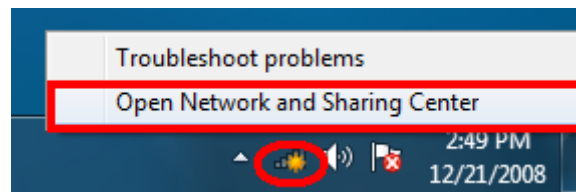


To check if the adapter is properly installed, you can right-click **My Computer** → choose **Properties** → click **Device Manager**.

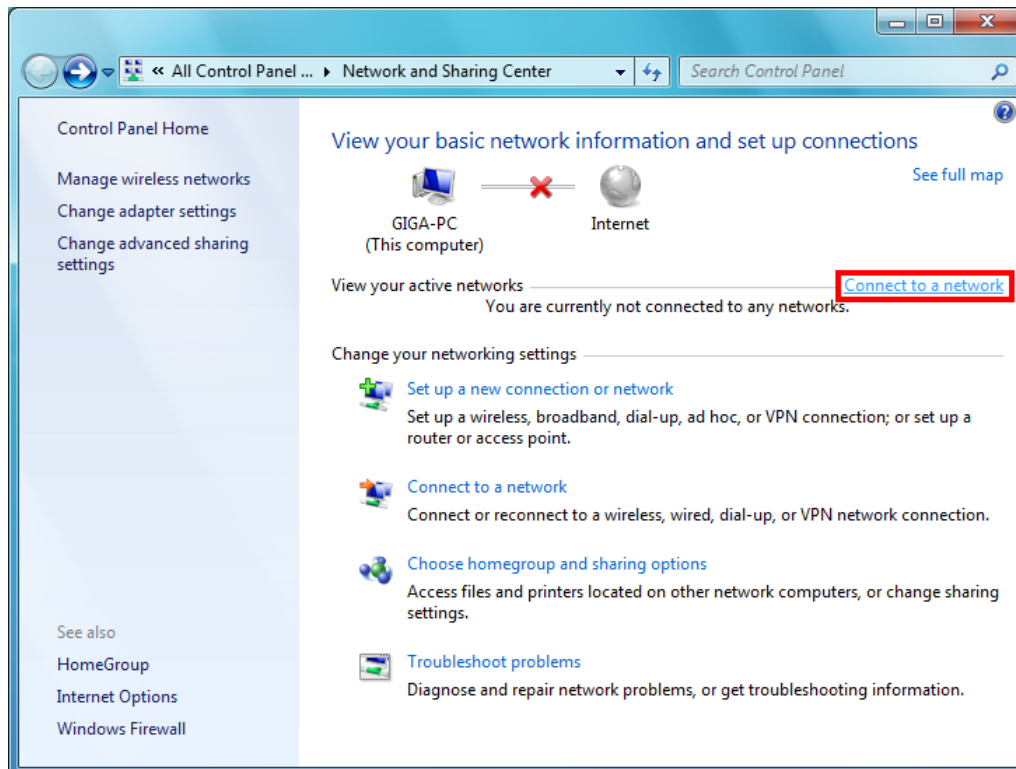


3. Connect to a network

STEP1: On the system tray, right-click **Network** icon and choose **Open Network and Sharing Center**.



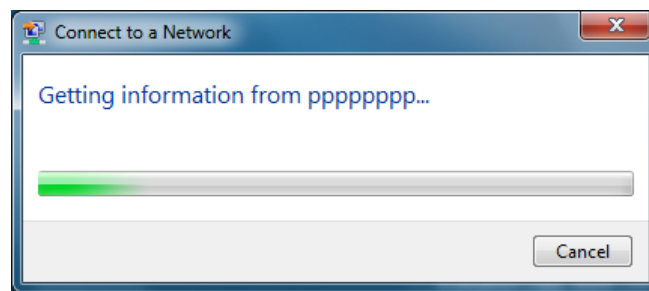
STEP2: Click **Connect to a network** to view the currently active networks



STEP3: Select an available network and click **Connect** to begin the connection.



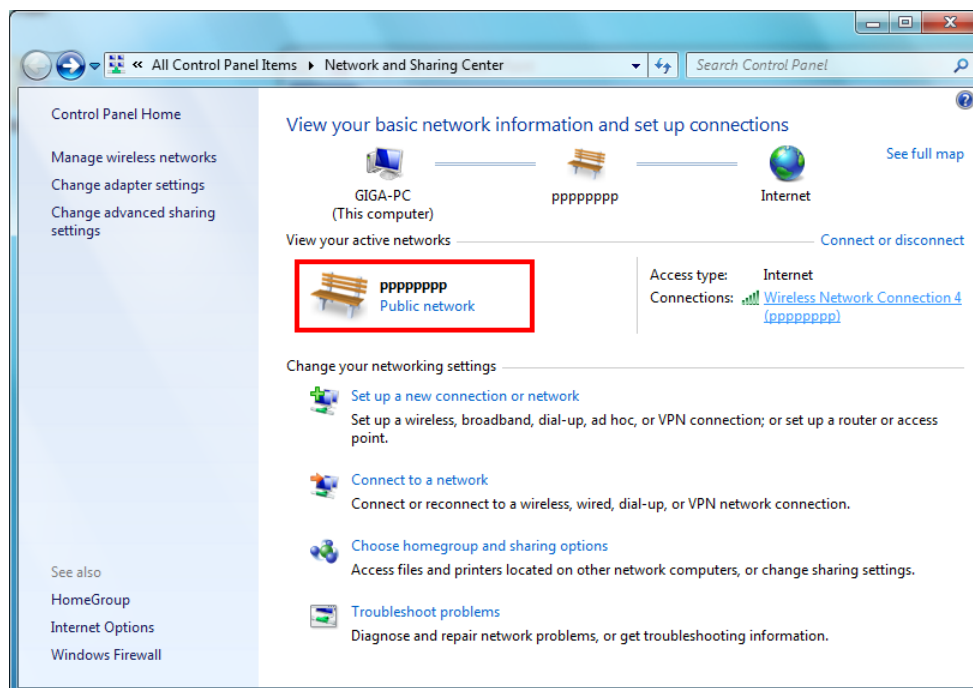
STEP4: Please wait for while during the network is connecting.



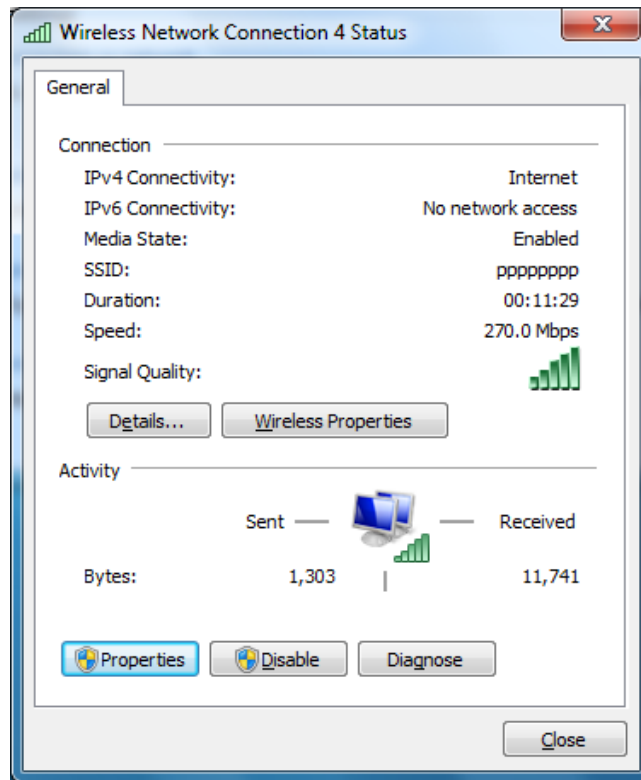
STEP5: Enter the network security key if necessary.



STEP6: After connection is active, you can view your active network on **Network and Sharing Center**.



STEP7: You can view the Network Status by clicking **Wireless Network Connection 4**.



STEP8: Now, you can surf the Internet.

