

ICMP Smurf Attack: Do not response to the broadcasting ICMP request.

Ping of Death: To avoid the main system to receive overloading ICMP packet.

Allow ICMP Maximum Packet Size: You can set the maximum allowing ICMP packet size when Ping of Death function is enabled. (The total length is ICMP header + ICMP data + IP header).

TCP/UDP Port Scan: To detect any suspected port scan behavior within the packet flow.

TCP Null Scan: When checking the flags of TCP header without any setting, the router determines this situation as TCP Null Scan and drops this packet.

TCP X'mas Tree Scan: When checking the flags settings of TCP header do not comply with the rule of RFC793, the router will determines this situation as TCP X'mas Tree scan and drops this packet.

TCP Full X'mas Tree Scan: When checking the flags settings of TCP header have been configured, the router determines this situation as TCP Full X'mas Tree Scan and drops this packet.

SYN Flood: To block the suspected SYN Flood attacked.

SYN Limit Rate: When enable SYN Flood function, you can enter the limit rate for TCP SYN packets which allow to pass per second.

FIN Flood: To block the suspected FIN Flood attacked.

FIN Limit Rate: When enable FIN Flood function, you can enter the limit rate for TCP FIN packets which allow to pass per second.

UDP Flood: To block the suspected UDP Flood attacked.

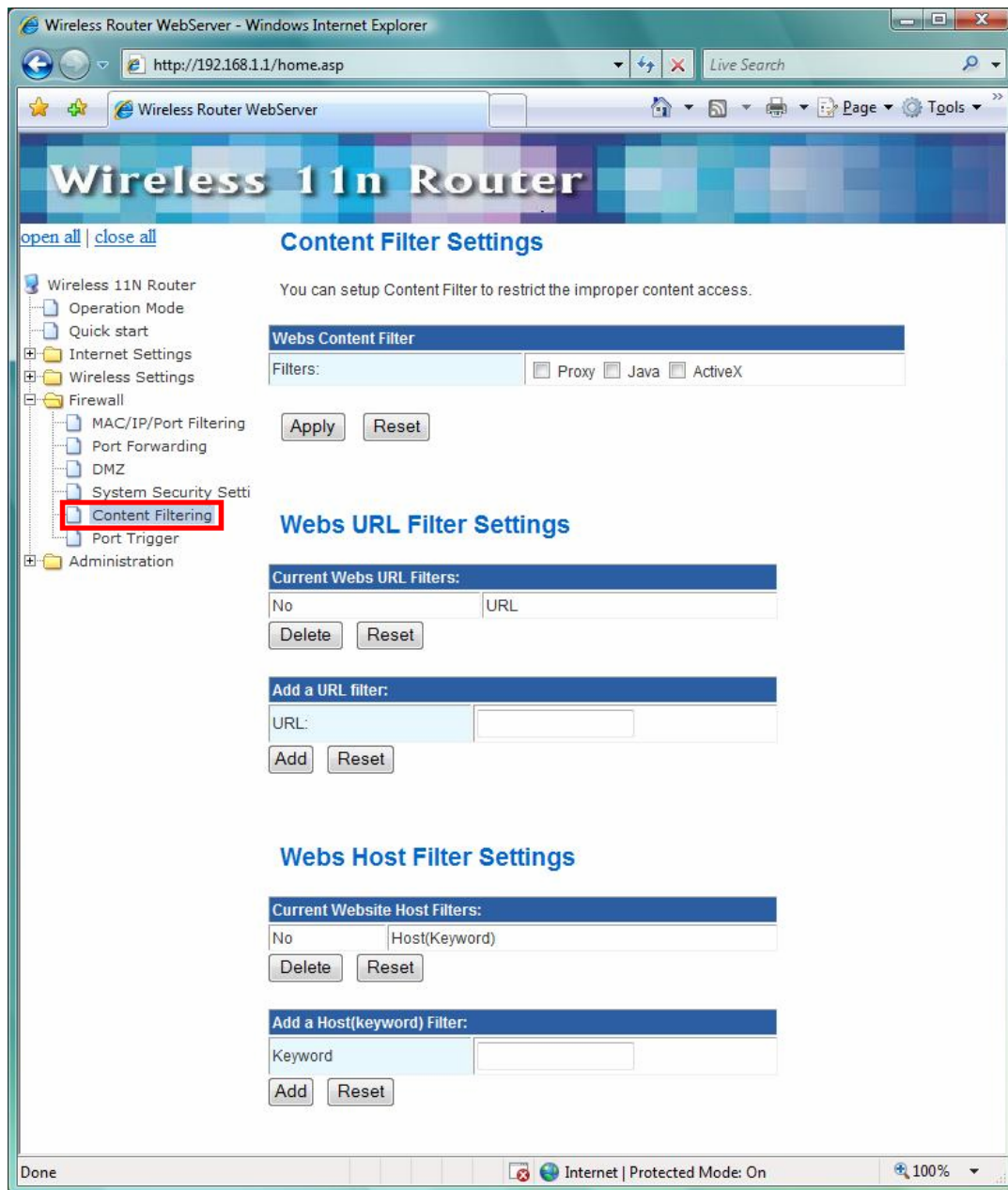
UDP Limit Rate: When enable UDP Flood function, you can enter the limit rate for TCP UDP packets which allow to pass per second.

ICMP Flood: To block the suspected ICMP Flood attacked.

ICMP Limit Rate: When enable ICMP Flood function, you can enter the limit rate for TCP ICMP packets which allow to pass per second.

3.6.5 Content Filtering

You can setup content filter to restrict the improper content access.



Content Filter Setting: There have three options for this filter – Proxy, Java, and ActiveX. When those options are checked, the content filter will deny computer from access to the internet by contented those options.

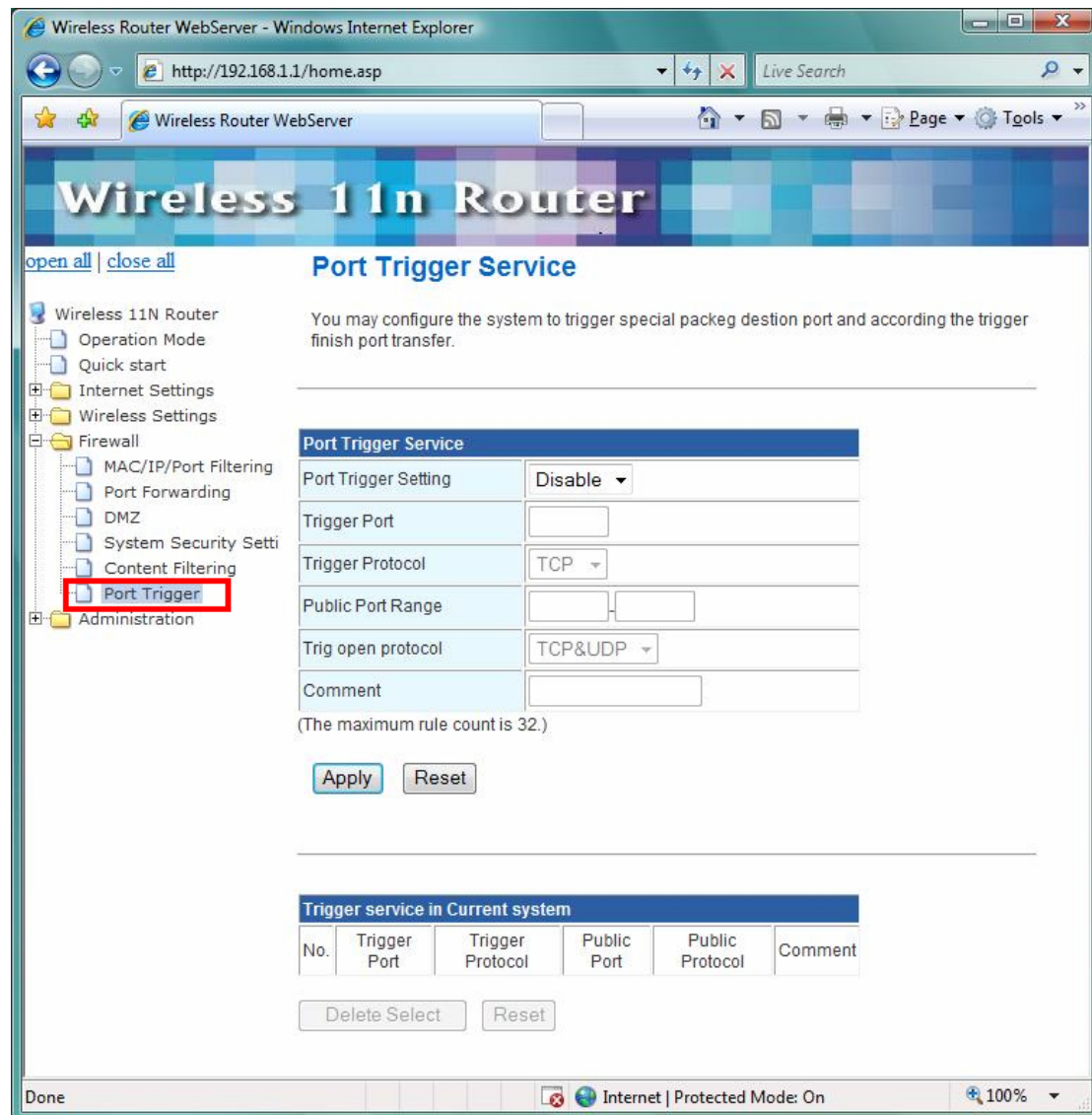
Web URL Filter Setting: With security reason, the URL Filter provides the enterprise to manage and restrict employee access to non-business or undesirable content on the Internet. URL Filter is a web solution that blocks web-sites access according the URL Filter String no matter the URL string is found full or partial matched with a keyword.

Web Host Filter Settings: Web Host Filter is a web solution that blocks web-sites access

according to the Web Host name or partial matched with a keyword.

3.6.6 Port Trigger

Some applications require multiple connections, such as Internet gaming, video conferencing, Internet telephony and others. If you need to run applications that require multiple connections, specify the port normally associated with an application in the "Trigger Port" field, select the protocol type as TCP or UDP, then enter the public ports associated with the trigger port to open them for inbound traffic.



Port Trigger Setting: Enable/Disable the port trigger.

Trigger Port: This is the port used to trigger the application. It can be either a single port or a range of ports.

Trigger Protocol: This is the protocol used to trigger the special application.

Public Port Range: This is the port number on the WAN side that will be used to access the application. You may define a single port or a range of ports. You can use a comma to add multiple ports or port ranges.

Trig open protocol: This is the protocol used for the special application.

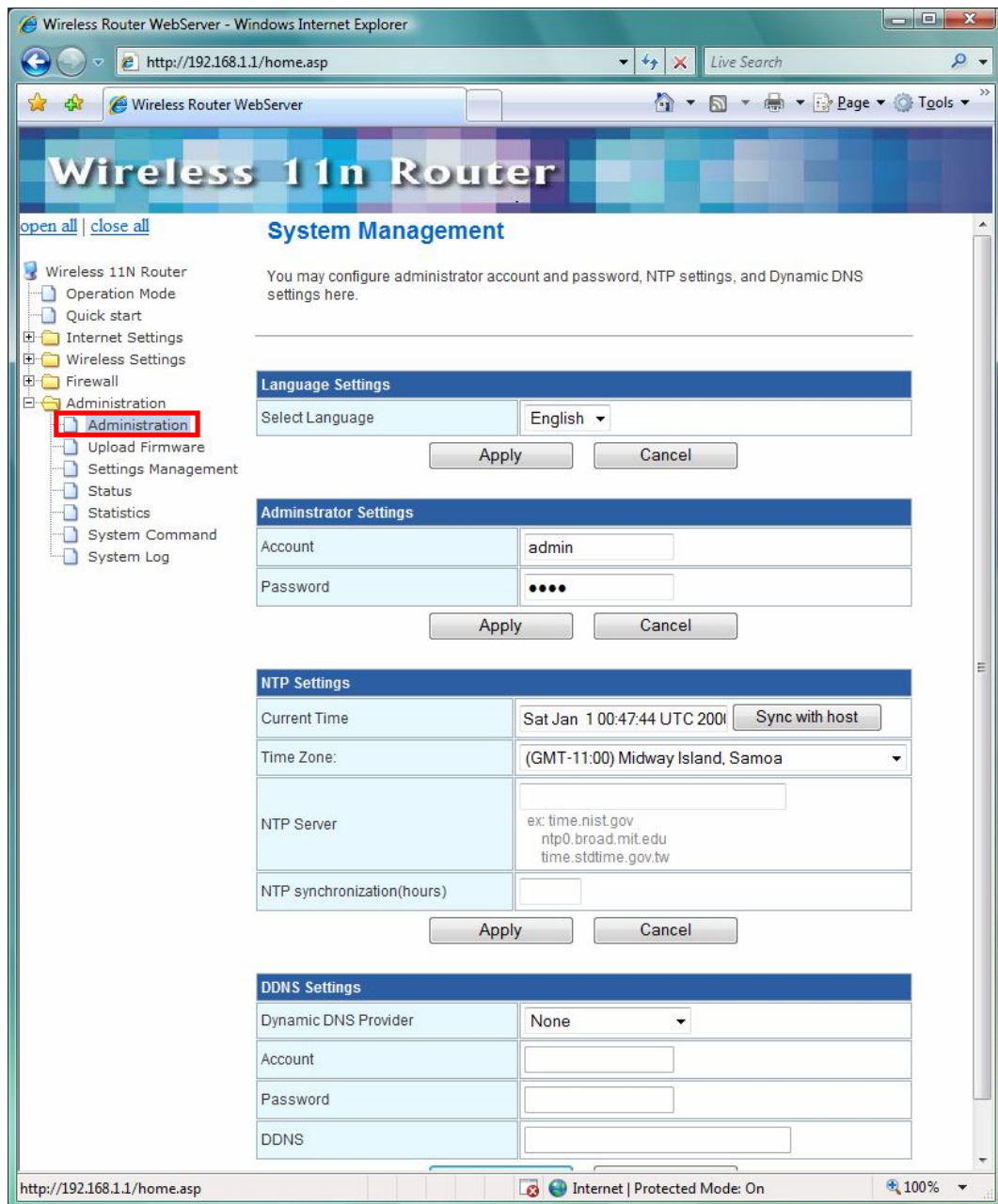
3.7 Administration

The Administration contains the following sections:

- ⊙ Administration ⊙ Upload Firmware ⊙ Setting Management ⊙ Status
- ⊙ Statistics ⊙ System Command ⊙ System Log

3.7.1 Administration

You may configure administrator account and password, NTP settings, and Dynamic DNS settings here.



3.7.2 Upgrade Firmware

Firmware is the main software image, which the AP Router needs to perform all tasks in real time. Firmware upgrades are required for adding new features or to resolves bugs. It takes about 1 minute to upload/upgrade flash and be patient please.

Caution: A corrupted image will hang up the system.

