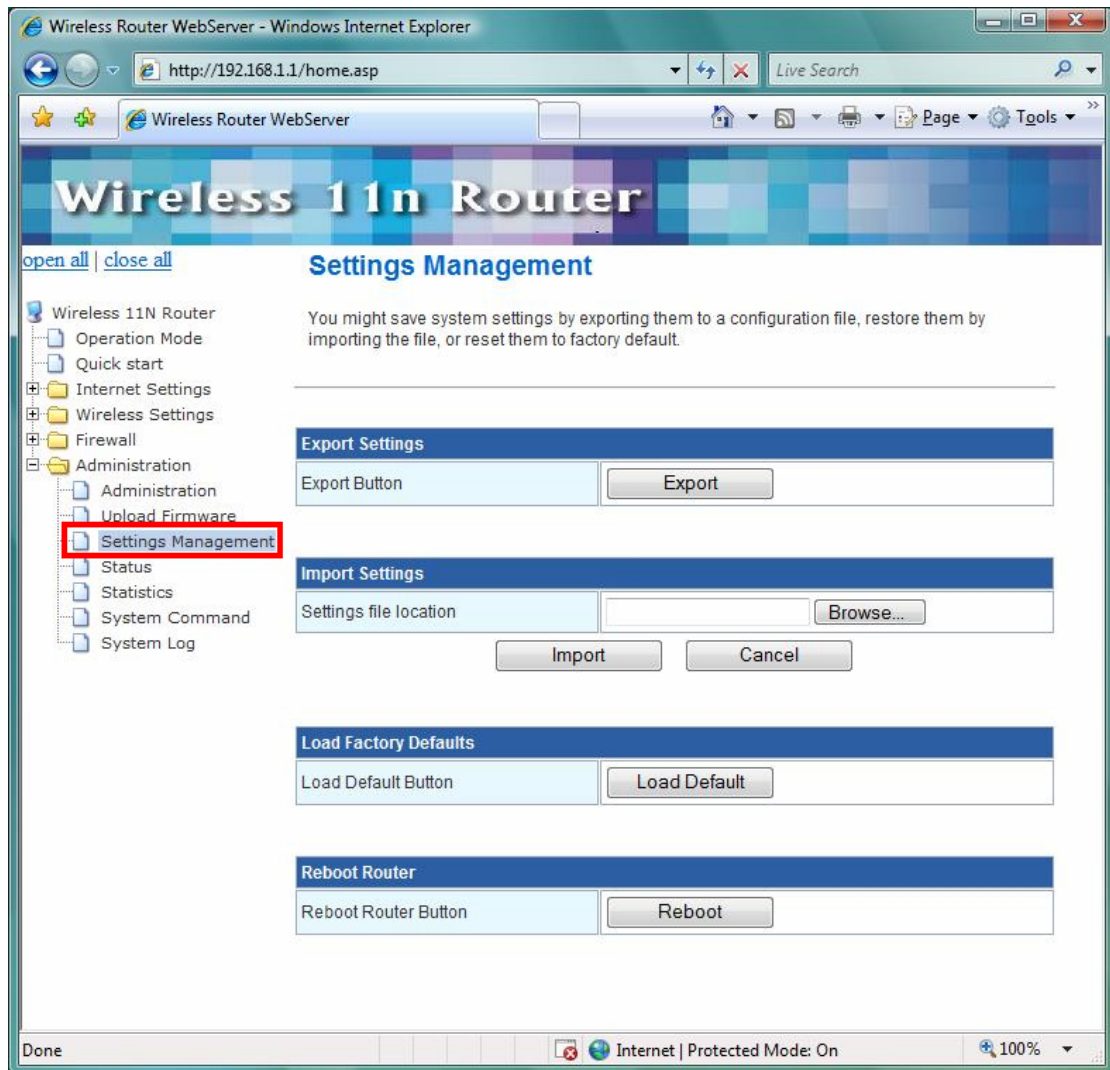


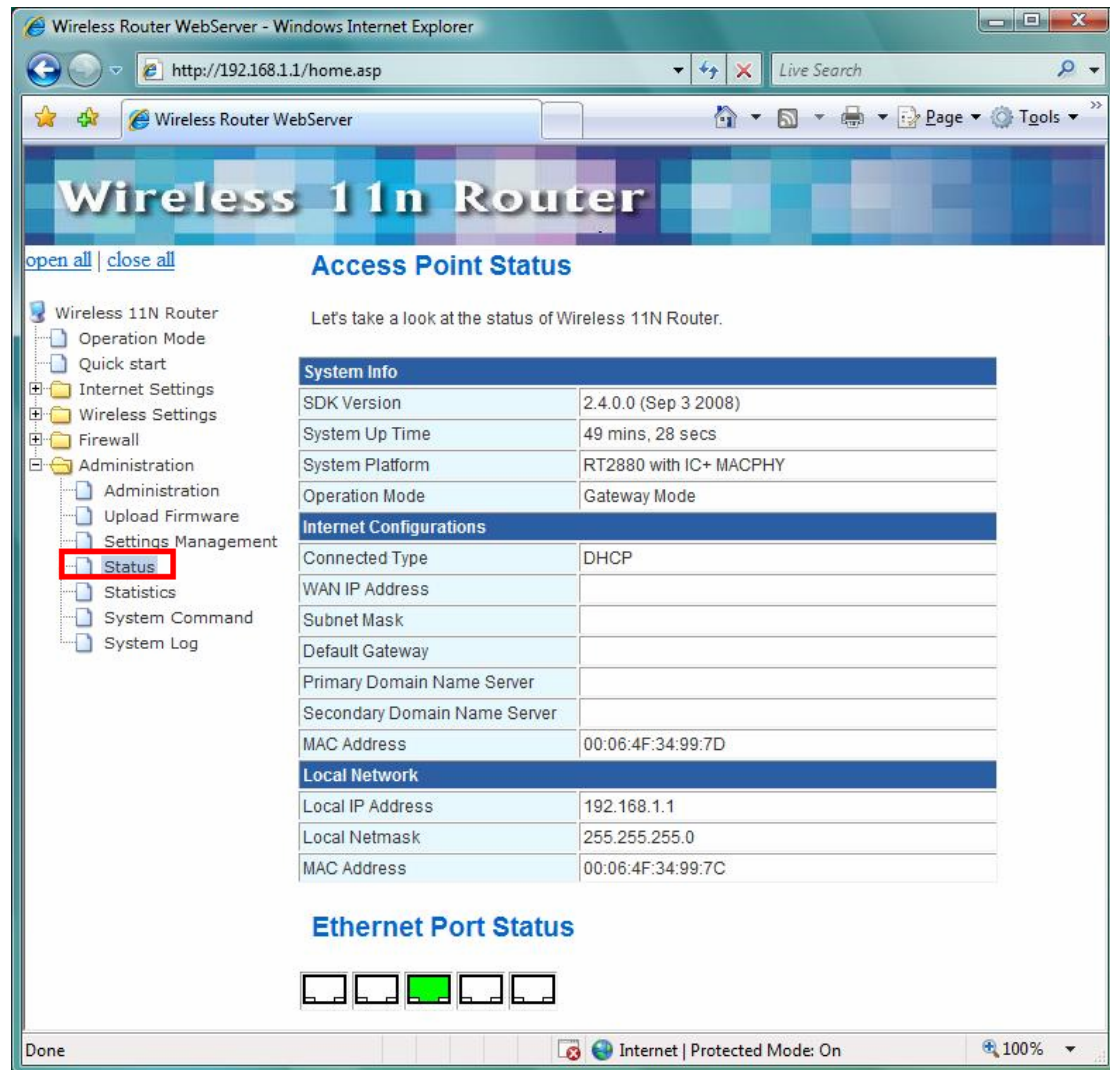
3.7.3 Setting Management

You might save system settings by exporting them to configuration file, restore them by import the file, or reset them to factory default.



3.7.4 Status

In this section, you can look at the status of this wireless 11n Router, such as System Info, Internet Configurations, and Local Network...etc.



The screenshot shows a web browser window titled "Wireless Router WebServer - Windows Internet Explorer" with the address bar displaying "http://192.168.1.1/home.asp". The page header features the text "Wireless 11n Router". On the left, a navigation menu lists various settings, with "Status" highlighted in a red box. The main content area is titled "Access Point Status" and includes a sub-header "System Info" with a table of router details. Below this is another table for "Internet Configurations" and a third for "Local Network". At the bottom, there is a section for "Ethernet Port Status" with five port indicators, the second of which is lit green.

System Info

SDK Version	2.4.0.0 (Sep 3 2008)
System Up Time	49 mins, 28 secs
System Platform	RT2880 with IC+ MACPHY
Operation Mode	Gateway Mode

Internet Configurations

Connected Type	DHCP
WAN IP Address	
Subnet Mask	
Default Gateway	
Primary Domain Name Server	
Secondary Domain Name Server	
MAC Address	00:06:4F:34:99:7D

Local Network

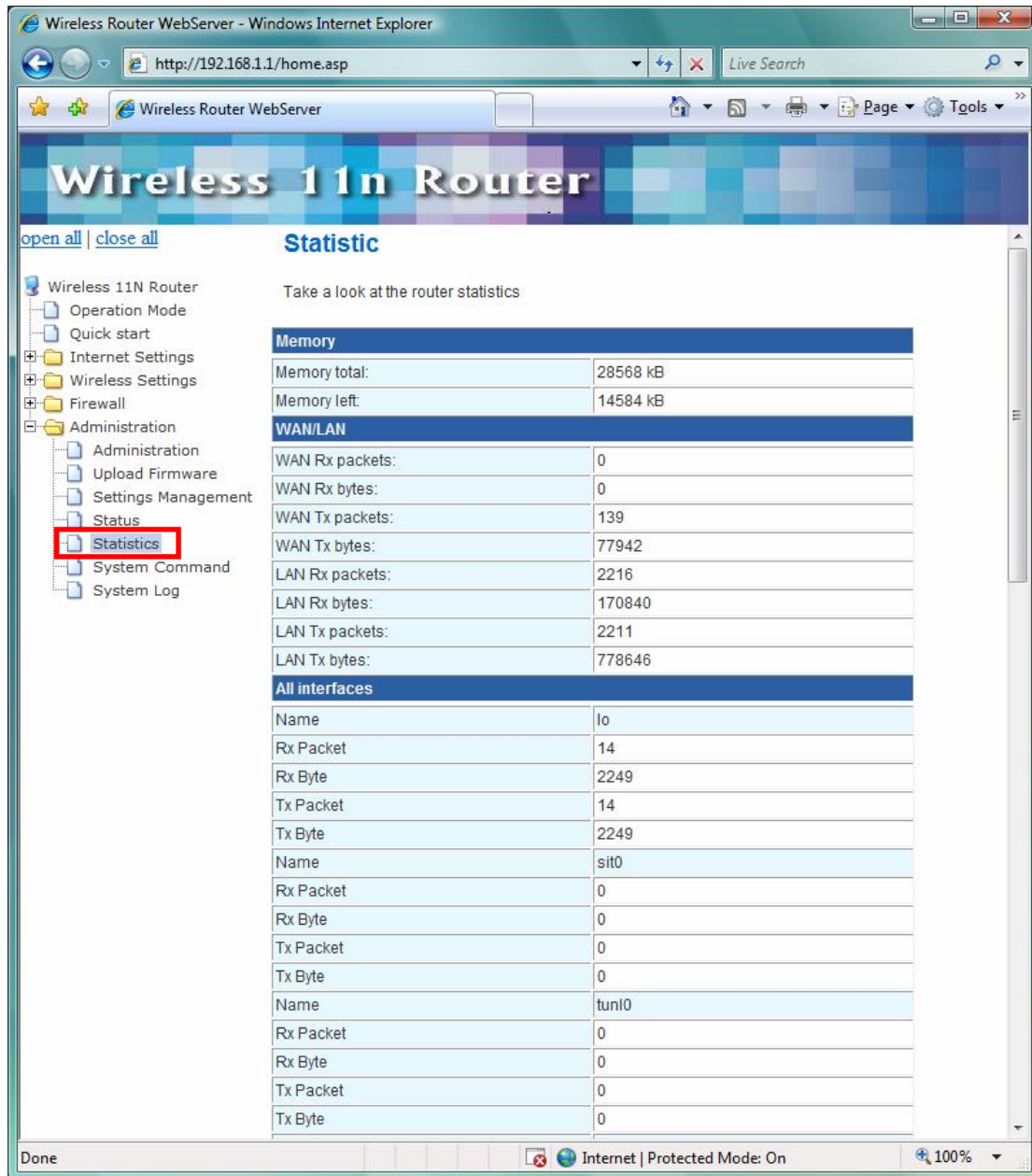
Local IP Address	192.168.1.1
Local Netmask	255.255.255.0
MAC Address	00:06:4F:34:99:7C

Ethernet Port Status

□ □ ■ □ □

3.7.5 Statistics

In this section, you can look at the statistics of this wireless 11n Router, such as Memory statistics, WAN/LAN's Rx & Tx packets, and all interface statistics...etc



The screenshot shows the 'Wireless Router WebServer' interface in a Windows Internet Explorer browser. The address bar shows 'http://192.168.1.1/home.asp'. The page title is 'Wireless 11n Router'. The left sidebar contains a navigation menu with 'Statistics' highlighted in a red box. The main content area is titled 'Statistic' and contains the following data:

Take a look at the router statistics

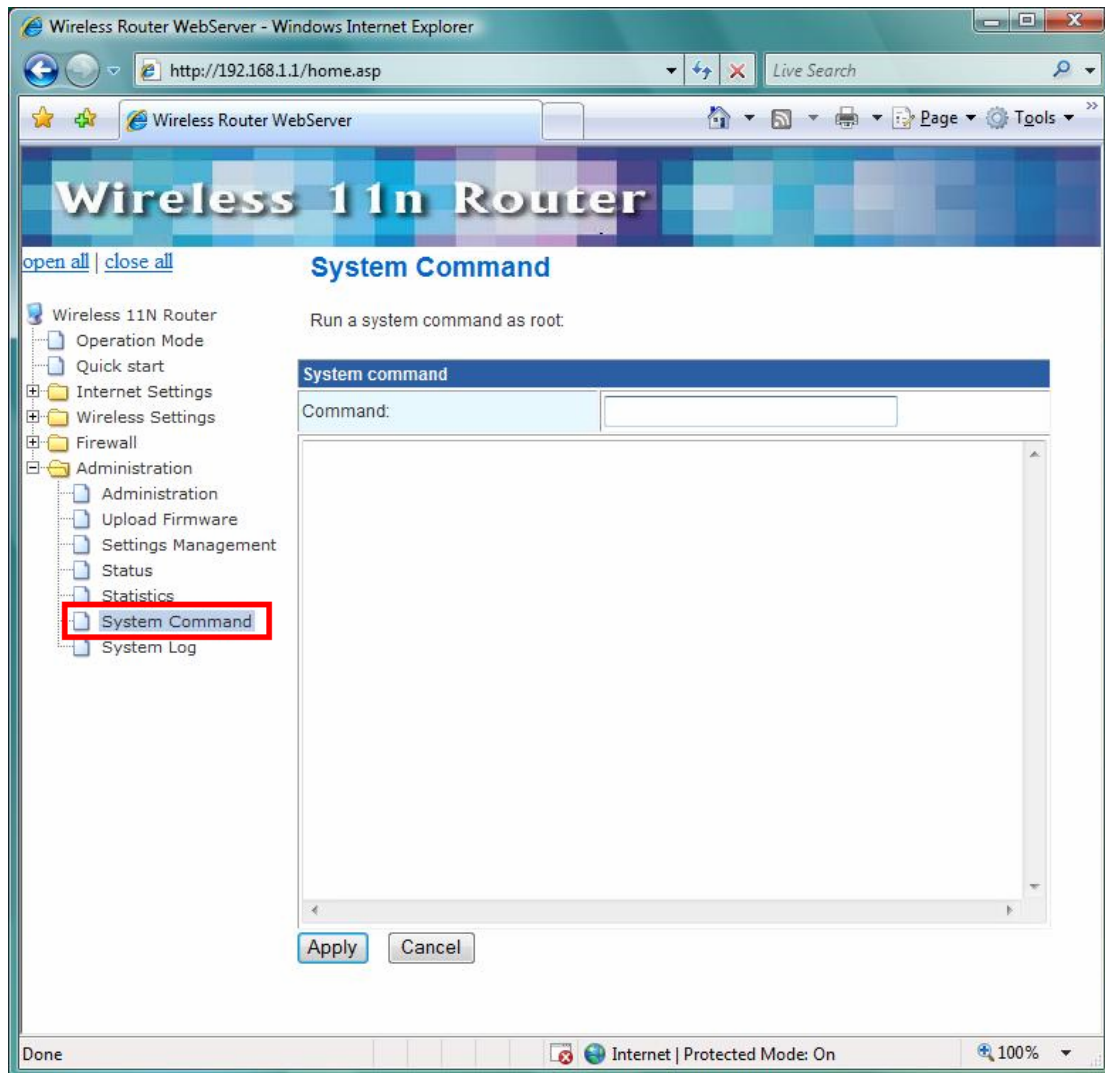
Memory	
Memory total:	28568 kB
Memory left:	14584 kB

WAN/LAN	
WAN Rx packets:	0
WAN Rx bytes:	0
WAN Tx packets:	139
WAN Tx bytes:	77942
LAN Rx packets:	2216
LAN Rx bytes:	170840
LAN Tx packets:	2211
LAN Tx bytes:	778646

All interfaces	
Name	lo
Rx Packet	14
Rx Byte	2249
Tx Packet	14
Tx Byte	2249
Name	sit0
Rx Packet	0
Rx Byte	0
Tx Packet	0
Tx Byte	0
Name	tunl0
Rx Packet	0
Rx Byte	0
Tx Packet	0
Tx Byte	0

3.7.6 System Command

In this section, you can run a system command as root.



3.7.7 System Log

This 802.11n Router supports sending system log (sending UDP packets and keeping log messages in Log Server. Click **Refresh** on **Administration**, below screen will prompt for System Log information

