

## Transmitter Model # WCBT-1 • Receiver Model # SWCB-1 • Made in China

### FEATURES

1. The wireless, easy mounting design for the receiver or pager does not damage walls and allows for portable use of the receiver as a pager. The call button transmitter can be worn as pendant or carried in a pocket.
2. 16 digital codes are built in to ensure that another unit being operated close-by will not cause interference or false alarms.
3. The receiver or pager has a range of approximately 500 feet in an open area. Metal or other obstacles may interfere with signal transmission. Always test desired range before using.
4. The receiver or pager emits a very clear sound with 32 melody sounds to choose from.
5. The call button transmitter has a convenient neck cord, an LED light that illuminates when activated and is water resistant.
6. The receiver has three signal options, including light signals for users with limited hearing.
  - a) Alarm only
  - b) Light only
  - c) Light and Alarm
7. 32 melody sounds for selection.
8. Low battery indication.

### USING THE CALL BUTTON TRANSMITTER

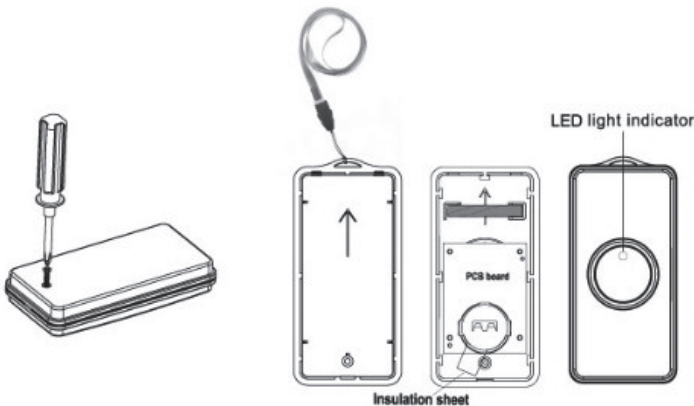


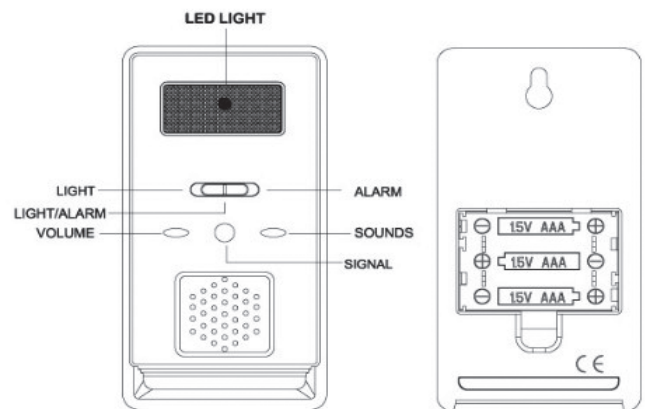
illustration 1

illustration 2

1. Use a small, phillips screwdriver to take out the screw and open the back of the call button transmitter (refer to illustration 1).
2. Remove the battery insulation sheet (refer to illustration 2). Test by pressing the call button and the LED light indicator will light when button is pressed.

3. The call button transmitter has a convenient neck cord attached to enable user to wear as a call button pendant or the call button transmitter can be placed on a bedside table within convenient reach of the user.
4. The call button transmitter uses 1 CR2032 battery, which is factory installed in the call button transmitter.

### SETTING UP THE RECEIVER OR PAGER



1. **BATTERY INSTALLATION** - Remove the battery cover and install 3 AAA batteries, which are included. Please refer to illustration above for correct polarity (+/-) battery position. Test to ensure batteries are installed correctly. Replace battery cover.
2. **SET THE ID CODES** - Press the "SIGNAL" button (refer to drawing above) for three seconds. The LED indicator light will illuminate indicating the signal has been received. You will have two minutes to press the call button on the transmitter to pair the call button with the receiver or pager. When the call button transmitter and receiver or pager are paired the receiver or pager light will flash to indicate a successful pairing. The light will automatically stop flashing within the two minute pairing period. The pairing will remain unchanged even if you change the batteries.

The ID code will remain unchanged even if the product runs out of batteries or without batteries.

3. **SOUND & LIGHT OPTIONS** - The receiver or pager has three signal options. Please refer to the drawing above.
  - a. **ALARM** - The alarm will sound when the call button transmitter button is pressed.
  - b. **LIGHT & ALARM** - The alarm will sound and the LED light will flash when the call button transmitter button is pressed.

- c. **LIGHT** - The LED light will flash when the call button transmitter button is pressed.
- CHOOSE THE SOUNDS** - Press the SOUNDS key to choose the alarm sound you prefer (32 sounds are available for selection).
  - VOLUME** - Press the VOLUME key to adjust the alarm volume.
  - ALARM SOUND CANCEL** - Press the SOUNDS or VOLUME key to stop the alarm from sounding.
  - INTERFERENCE** - If the unit is causing interference with a neighbors' equipment please press the "SIGNAL" key for three seconds to re-set a new ID code. Follow the SET THE ID CODES instructions in Point 2. above.

### LOW BATTERY INDICATION

Receiver or Pager: The LED light indicator on the receiver will flash when the battery is low, please replace the batteries to make sure it works smoothly.

Call Button Transmitter: The LED light on the transmitter will flash when the battery is low, please replace the transmitter battery accordingly.

### NOTES AND WARNINGS:

- Use high quality alkaline batteries for maximum life.
- Keep away from humidity, rain, sunlight and metal objects.
- Do not attempt to disassemble the product. There are no user serviceable parts in this device.
- In different environments the range will change. Please note that metal objects will reduce the operating range.
- Do not immerse electrically operated products in water or other liquid.
- Wipe clean only.

### BATTERY INFORMATION

- The receiver or pager requires 3 AAA batteries, which are included.
- The call button transmitter uses 1 CR2032 battery, which is factory installed in the call button transmitter.
- Use only designated battery type. Do not use re-chargeable batteries. Do not mix battery types.
- Read instructions carefully and install batteries correctly observing the polarity (+/-) sign to avoid leakage.
- Always replace sets of batteries at the same time. Do not mix old and new batteries.
- Do not attempt to recharge the batteries included. They are not rechargeable.
- Remove batteries when you do not plan to use the system for an extended period of time. This will avoid the possibility of battery leakage that may cause damage.
- Immediately remove and replace batteries when the low battery indicator lights illuminate.
- Do not use sharp objects to remove batteries to avoid the possibility of damaging batter contacts in the battery compartment.
- Old batteries can be safely disposed of with normal household waste. Never dispose of batteries in fire because they could explode.

---

**WARRANTY:** Personal Safety Corporation warrants this product to be free from factory defects in materials and workmanship for a period of one year from the date of purchase. Warranty is void if this product is misused, abused or damaged. No warranty or responsibility of use expressed or implied.

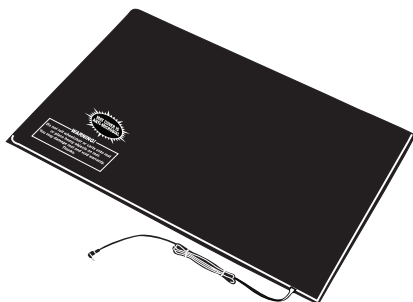
---

## CAUTION!

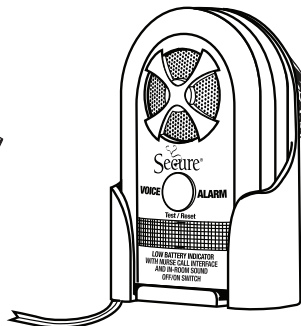
This product is not a restraint. It will not prevent a resident from getting out of their bed or chair. This product is designed as a monitor, alerting the staff when the resident has risen from their bed or chair. This product is to be used in conjunction with a total fall prevention program.



Secure® Hip Protectors - SHP  
(In five sizes)



Secure® Reversible Safety  
Floor Mat - MAT-1 & MAT-2



Secure® Voice Alarm  
SVA-2Y



Secure® Universal Alarm  
SUA-1

Please see our complete line of Secure® fall & wandering prevention products at [www.PadAlarm.com](http://www.PadAlarm.com).

**Highest Quality...Lowest Prices...Guaranteed!**

**Personal Safety Corporation • Hiawatha, Iowa 52233 • 800.373.2873**

FCC Statement:

This device complies with part 15 of the FCC Rules. Operation is subject to the following two conditions: (1) This device may not cause harmful interference, and (2) this device must accept any interference received, including interference that may cause undesired operation.

This equipment has been tested and found to comply with the limits for a Class B digital device, pursuant to part 15 of the FCC Rules. These limits are designed to provide reasonable protection against harmful interference in a residential installation. This equipment generates, uses and can radiate radio frequency energy and, if not installed and used in accordance with the instructions, may cause harmful interference to radio communications. However, there is no guarantee that interference will not occur in a particular installation. If this equipment does cause harmful interference to radio or television reception, which can be determined by turning the equipment off and on, the user is encouraged to try to correct the interference by one or more of the following measures:

- Reorient or relocate the receiving antenna.
- Increase the separation between the equipment and receiver.
- Connect the equipment into an outlet on a circuit different from that to which the receiver is connected.
- Consult the dealer or an experienced radio/TV technician for help.

Caution: Any changes or modifications not expressly approved by the party responsible for compliance could void the user's authority to operate the equipment.