



Interactive Fitness,
Inspired Training

User's Guide

Congratulations for selecting the revolutionary iFit® Live Module. Your iFit Live Module will help you to create and manage a personal fitness program designed to make your fitness goals a reality. With the iFit Live Module, you can wirelessly download customized workouts, track your workout results, get live support, and even share your achievements on popular social networking sites. These are just some of the features available with your iFit Live Module.

QUESTIONS?

If you have questions after reading this guide and activating your iFit Live Module (see HOW TO ACTIVATE YOUR IFIT LIVE MODULE below), **PLEASE DO NOT CONTACT THE STORE. Please call Customer Care toll-free at 1-866-608-1798, Mon.–Fri. 6 am–6 pm MT, Sat. 8 am–4 pm MT (closed on holidays); visit our Customer Care Web site at www.iFit.com/support; or send e-mail to service@iconfitness.com.**

HOW TO ACTIVATE YOUR IFIT LIVE MODULE

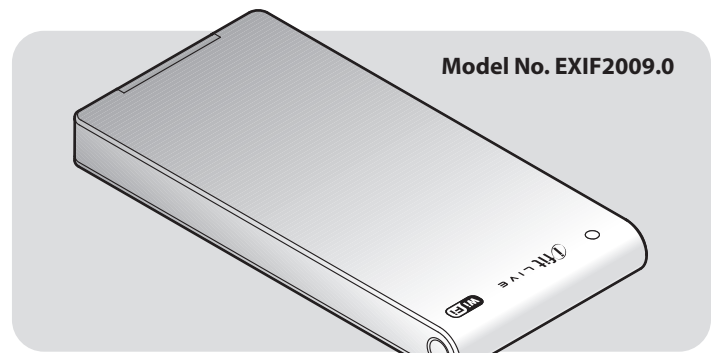
Follow the steps below to activate your iFit Live Module.

IMPORTANT: To complete the activation process, you will need to know your network SSID (network name), network encryption type, and network password.

1. Plug the included USB cable into the port on your iFit Live Module.
2. Plug the other end of the USB cable into a USB port on your computer.
3. Turn on your computer, launch your Web browser, and go to www.iFit.com/install.
4. Follow the instructions on your computer screen to activate your iFit Live Module. When you complete the process, the words, "Device has been successfully configured" will be displayed on your computer screen.
5. Unplug the USB cable from your computer and from your iFit Live Module.
6. Unplug the power cord of your fitness equipment. Insert the iFit Live Module into the iFit port on the console of your exercise equipment.

Note: If you have questions after following these instructions, go to www.iFit.com/support for assistance.

To use the iFit Live Module, see your fitness equipment user's manual or go to www.iFit.com/support.

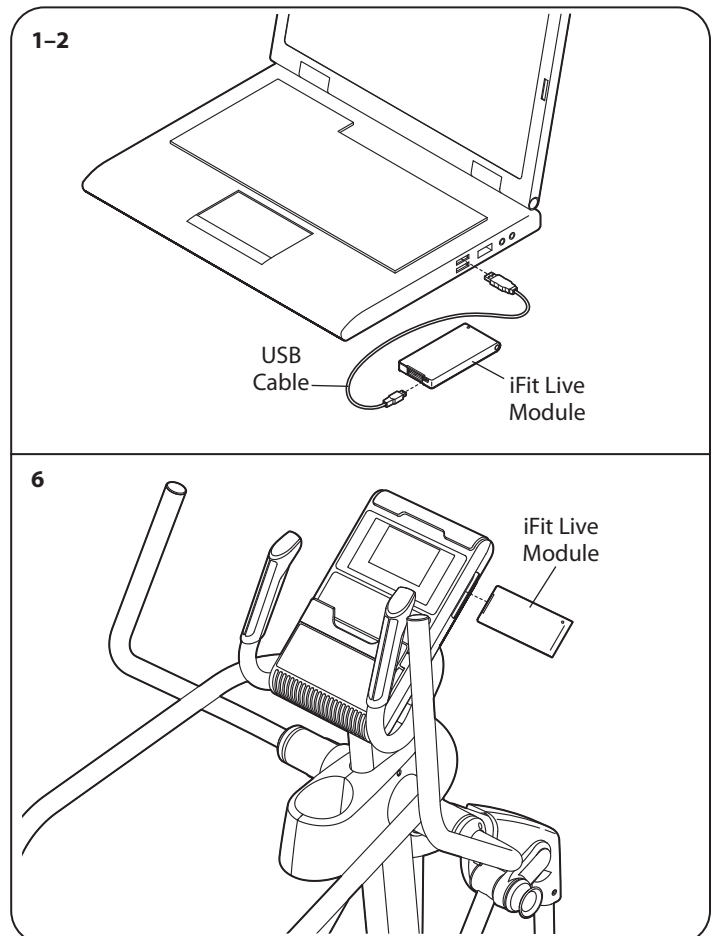


OPERATING REQUIREMENTS

To activate and use your iFit Live Module, you will need the following:

- A PC, Macintosh, or Linux computer with a USB port
- A wireless 802.11b router with SSID broadcast enabled (hidden networks are not supported)
- An Internet connection (a broadband connection is recommended; performance depends on connection speed)
- An iFit.com membership

Note: The iFit Live Module supports unsecured and secured (WEP, WPA, and WPA2) encryption.



WARNING

Before beginning any exercise program, consult your physician. This is especially important for persons over age 35 or persons with pre-existing health problems.

ICON assumes no responsibility for personal injury or property damage sustained by or through the use of this product.

IMPORTANT NOTICE

IMPORTANT: To comply with FCC and IC RF exposure compliance requirements, the antenna used for this transmitter must be installed to provide a separation distance of at least 20 cm from all persons and must not be co-located or operating in conjunction with any other antenna or transmitter.

This equipment has been tested and found to comply with the limits for a Class B digital device, pursuant to Part 15 of the FCC Rules. These limits are designed to provide reasonable protection against harmful interference in a residential installation. This equipment generates,

uses, and can radiate radio frequency energy and, if not installed and used in accordance with the instructions, may cause harmful interference to radio communications. However, there is no guarantee that interference will not occur in a particular installation. If this equipment does cause harmful interference to radio or television reception, which can be determined by turning the equipment off and on, the user is encouraged to try to correct the interference by one of the following measures:

- Reorient or relocate the receiving antenna.
- Increase the separation between the equipment and the receiver.
- Connect the equipment into an outlet on a circuit different from that to which the receiver is connected.
- Consult the dealer or an experienced radio/TV technician for help.

FCC CAUTION: To assure continued compliance, use only shielded interface cables when connecting to computer or peripheral devices. Any changes or modifications not expressly approved by the party responsible for compliance could void the user's authority to operate this equipment.

This device complies with Part 15 of the FCC Rules. Operation is subject to the following two conditions: (1) This device may not cause harmful interference, and (2) this device must accept any interference received, including interference that may cause undesired operation.

LIMITED WARRANTY

IMPORTANT: You must register this product within 30 days of the purchase date to avoid added fees for service needed under warranty. Go to www.ifit.com/contact.

ICON Health & Fitness, Inc. (ICON) warrants this product to be free from defects in workmanship and material, under normal use and service conditions. Parts and labor are warranted for ninety (90) days from the date of purchase.

This warranty extends only to the original purchaser. ICON's obligation under this warranty is limited to repairing or replacing, at ICON's option, the product through one of its authorized service centers. All repairs for which warranty claims are made must be preauthorized by ICON. If the product is shipped to a service center, freight charges to and from the service center will be the customer's responsibility. For replacement parts shipped while the product is under warranty, the customer will be responsible for a minimal handling charge. This warranty does not extend to any damage to a product caused by or attributable to freight damage, abuse, misuse, improper or abnormal usage, or repairs not provided by an ICON authorized service center; to products used for commercial or rental purposes or as store display models; or to products transported or purchased outside the US. No other warranty beyond that specifically set forth above is authorized by ICON.

ICON is not responsible or liable for indirect, special, or consequential damages arising out of or in connection with the use or performance of the product; damages with respect to any economic loss, loss of property, loss of revenues or profits, loss of enjoyment or use, or costs of removal or installation; or other consequential damages of whatsoever nature. Some states do not allow the exclusion or limitation of incidental or consequential damages. Accordingly, the above limitation may not apply to you.

The warranty extended hereunder is in lieu of any and all other warranties, and any implied warranties of merchantability or fitness for a particular purpose are limited in their scope and duration to the terms set forth herein. Some states do not allow limitations on how long an implied warranty lasts. Accordingly, the above limitation may not apply to you.

This warranty gives you specific legal rights. You may also have other rights that vary from state to state.

**ICON Health & Fitness, Inc., 1500 S. 1000 W.
Logan, UT 84321-9813**