

# FW4B Mini Pc User Manual

Version 1.0  
Published May 2018

# Content

<b>1. Introduction.....</b>	<b>1</b>
1.1 Specification.....	2
1.2 Package Contents.....	3
1.3 I/O Panel.....	4
<b>2. Installation.....</b>	<b>4</b>
2.1 Screw Holes.....	5
2.2 Pre-installation Precautions.....	6
2.3 Installation of Memory Modules.....	6
2.4 Onboard Headers and Connectors.....	6

# Chapter 1: Introduction

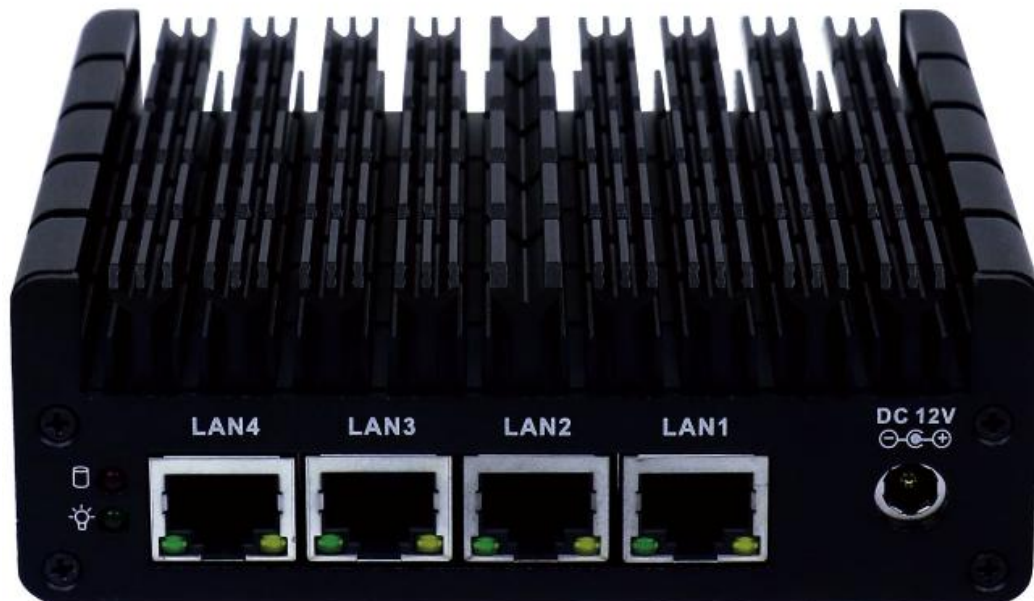
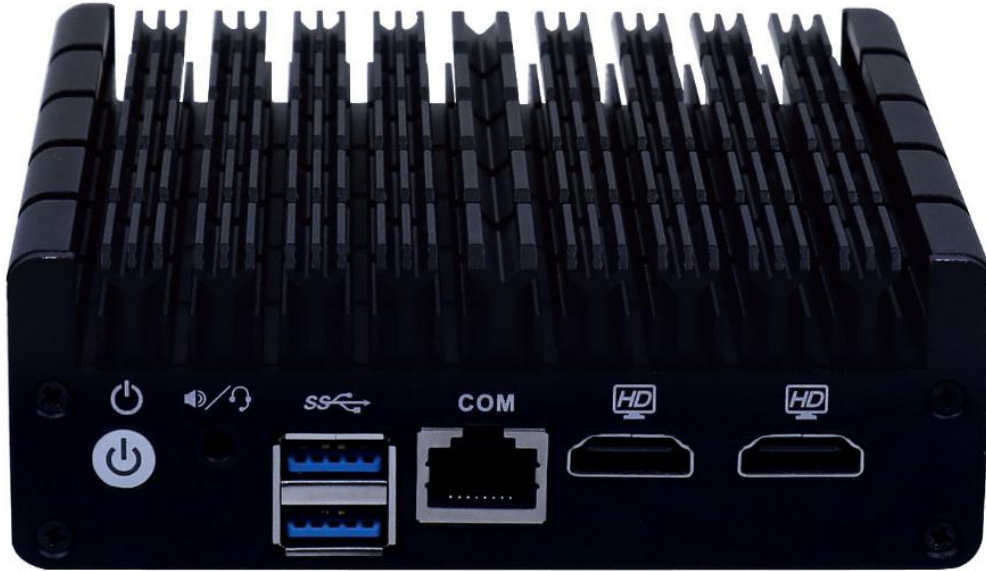
## 1.1 Specification

<b>Model</b>	FW4B
<b>Processor</b>	Intel Celeron J3160 (quad core, 1.6 GHz, Turbo boost 2.24 GHz)
<b>Chipset</b>	Adopt Intel express chipset
<b>RAM</b>	1*SODDDR3L(can up to 8G)
<b>Display port</b>	Integrated Intel HD Graphic card, Support 2*HDMI
<b>Expansion port</b>	2*Mini-PCIE, support wifi
<b>Storage</b>	1* MINISATA
<b>Audio</b>	N/A
<b>Network</b>	4* Intel I210AT 1000M Lan, support wake on lan
<b>I/O</b>	4* RJ-45 1* 12V DC input 2* HDMI 2 *USB 3.0 1*Power switch 1* Power Led, 1* HDD led
<b>Built-in I/O</b>	1 * FP1 1 * J2 1 * JSATA Port, 1*SATA 1 * MINI_PCIE for WiFi, 1 * Mini-SATA 1 * SODIMM 1 * CPU_Fan
<b>BIOS</b>	AMI 64M DPI Flash ROM
<b>WDT</b>	Support hardware reset (256 level, 0~255 sec)
<b>Power supply</b>	DC-12V
<b>Temp</b>	-20℃~60℃
<b>Humidity</b>	0~95% relative humidity, non-condensing
<b>Dimension</b>	115 * 107.5 * 39 mm

## Package Contents

FW4B Main Host  
Vesa Bracket  
Screw Package

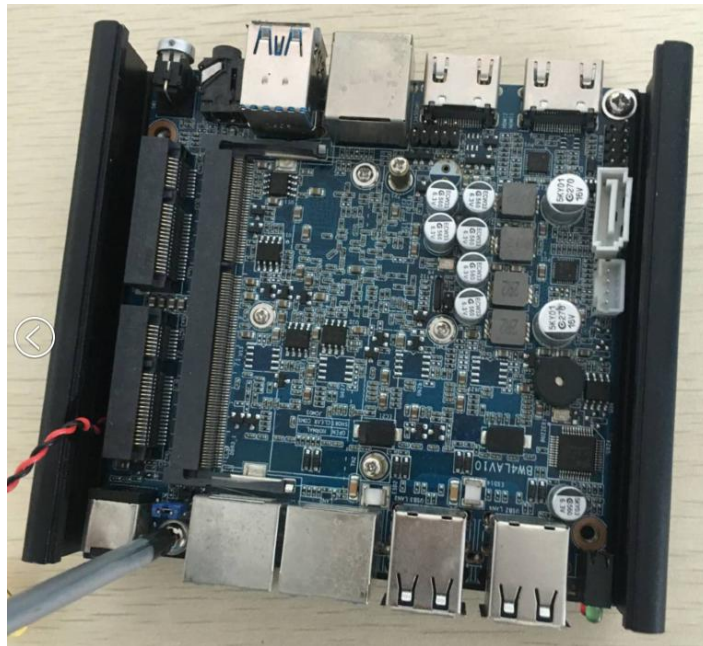
### 1.3 I/O Panel



## Chapter 2

### 2.1 screw holes

Place screws into the holes to secure the motherboard to the chassis .



Place screws into the hold to secure the bottom panel to the chassis .



## **2.1 Pre-installation precautions**

Take note of the following precautions before you install motherboard components or change any motherboard settings.

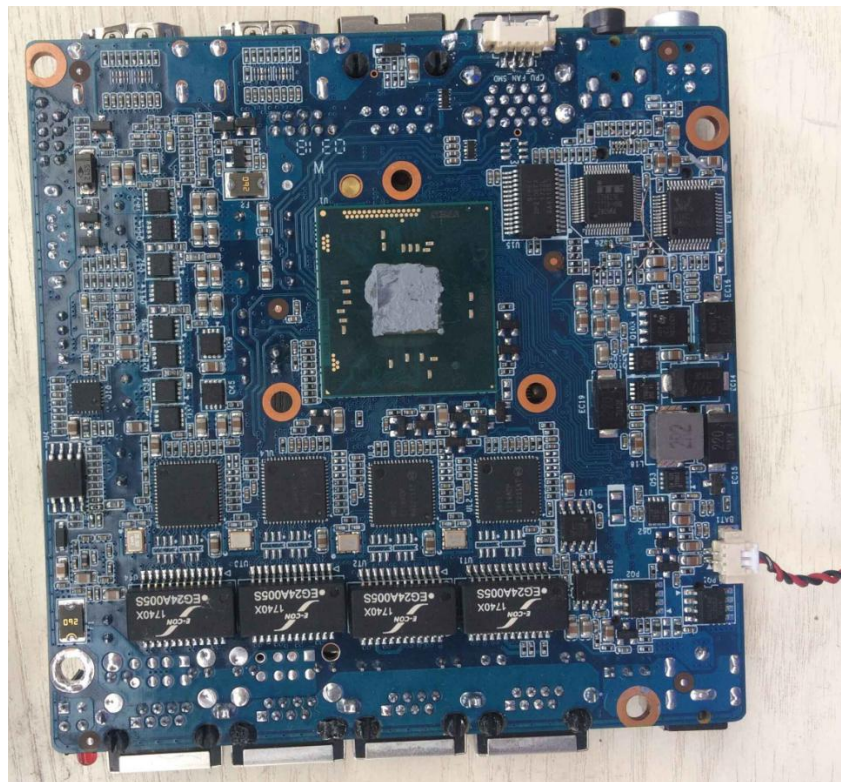
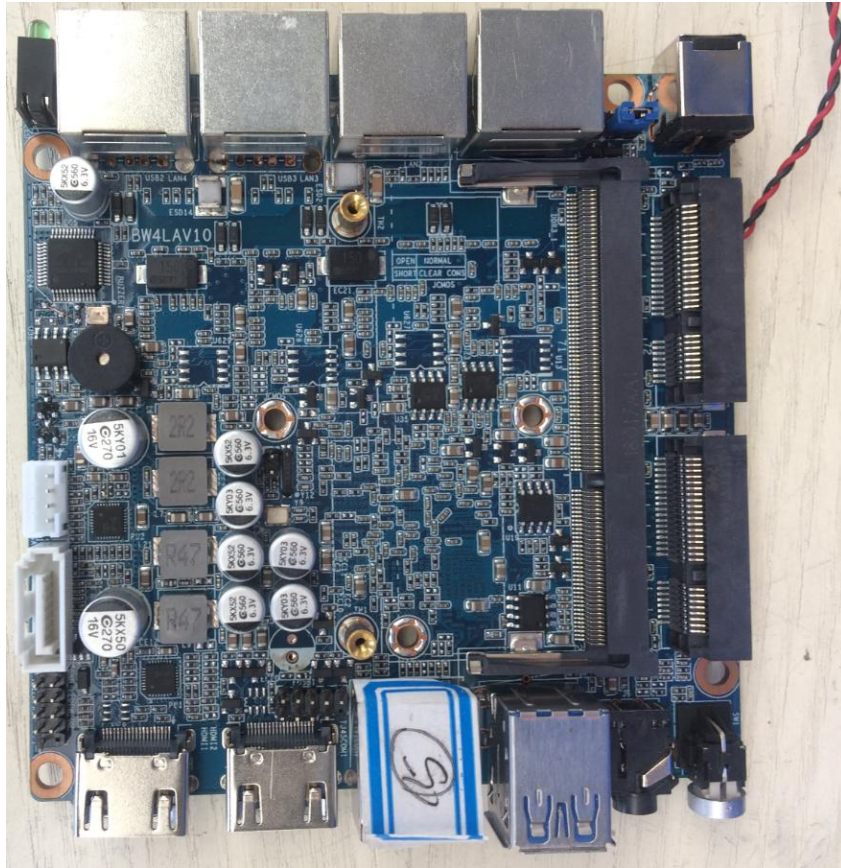
1. Unplug the power cord from the wall socket before touching any component .
2. To avoid damaging the motherboard components due to static electricity, Never place your motherboard directly on the carpet or the like . Also remember to use a grounded wrist strap or touch a safety grounded object before you handle components .
3. Hold components by the edges and do not touch the ICs.
4. Whenever you uninstall any component, place it on a grounded antistatic pad or in the bag that comes with the component .

## **2.3 Installation Memory Modules**

Please make sure to disconnect power supply before adding or removing So-DIMMs or the system components.

- Step1. Unlock a SO-DIMM slot by pressing the retaining clips outward.
- Step2. Align a SO-DIMM on the slot such that the notch on the SO-DIMM matches the break on the slot

## 2.4 Onboard headers and Connectors



## FCC WARNING

This device complies with part 15 of the FCC Rules. Operation is subject to the following two conditions: (1) this device may not cause harmful interference, and (2) this device must accept any interference received, including interference that may cause undesired operation.

Any changes or modifications not expressly approved by the party responsible for compliance could void the user's authority to operate the equipment.

NOTE: This equipment has been tested and found to comply with the limits for a Class B digital device, pursuant to Part 15 of the FCC Rules. These limits are designed to provide reasonable protection against harmful interference in a residential installation. This equipment generates, uses and can radiate radio frequency energy and, if not installed and used in accordance with the instructions, may cause harmful interference to radio communications.

However, there is no guarantee that interference will not occur in a particular installation.

If this equipment does cause harmful interference to radio or television reception, which can be determined by turning the equipment off and on, the user is encouraged to try to correct the interference by one or more of the following measures:

- Reorient or relocate the receiving antenna.
- Increase the separation between the equipment and receiver.
- Connect the equipment into an outlet on a circuit different from that to which the receiver is connected.
- Consult the dealer or an experienced radio/TV technician for help.

To maintain compliance with FCC's RF Exposure guidelines, This equipment should be installed and operated with minimum 20cm distance between the radiator and your body: Use only the supplied antenna.