

4

CONFIGURATION

4.1	Overview of Software	49
4.1.1	Psion Software Advantage.	49
4.1.2	Microsoft Software	49
4.2	The Control Panel.	49
4.2.1	Control Panel Icons	50
4.3	App Launch Keys	53
4.4	Bluetooth® Setup	54
4.4.1	Paired	55
4.4.2	Device.	56
4.4.2.1	Discovering and Removing Devices.	56
4.4.2.2	Filtering By Class of Device (COD).	56
4.4.2.3	Device Pop-up Menu	57
4.4.2.4	Pairing a Device	57
4.4.3	Servers	59
4.4.4	Mode	59
4.4.5	About	60
4.4.6	The Bluetooth GPRS WAN Connection.	60
4.5	Certificates	63
4.6	Data Transfer between Omnii and a PC	64
4.6.2	Using Microsoft ActiveSync	64
4.6.3	Using Windows Mobile Device Center	65
4.30.1	Wi-Fi Config: Status	122
4.30.2	Wi-Fi Config: Configure	122
4.30.3	Configuring TCP/IP	126
4.30.4	Wi-Fi Config: Advanced	128
4.7	Display Properties	65
4.7.1	Background	65
4.7.2	Appearance	65
4.7.3	Backlight	66
4.8	Dr. Debug.	66
4.8.1	Status	67
4.8.2	Settings.	67
4.8.3	Utilities	68
4.9	Error Reporting	68
4.10	GPS (Global Positioning System) Settings.	68
4.10.1	Power	69
4.10.2	Profiles	69
4.10.3	Programs.	69
4.10.4	AGPS	70
4.10.5	Info	71
4.11	Imager & Camera Settings	71
4.12	Input Panel	72
4.12.1	Keyboard Properties	73
4.12.1.1	Key Repeat	73
4.12.1.2	Keyboard Backlight	74

Regulatory Draft

4.12.1.3	Keyboard One Shot Modes	75
4.12.1.4	Keyboard Macro Keys	75
4.12.1.5	Unicode Mapping	77
4.12.1.6	Scancode Remapping	78
4.12.1.7	Lock Sequence	80
4.13	Manage Triggers	81
4.14	Microphone	83
4.15	Open TekTerm	84
4.16	PartnerUp	84
4.17	Pocket PC Compatibility	85
4.18	Power Properties	85
4.18.1	Battery Capacity	85
4.18.2	Power Saving Suspend	86
4.18.3	Suspend Threshold and Estimated Battery Backup	87
4.18.4	Advanced	87
4.18.5	Built-in Devices	88
4.18.6	Battery Health	88
4.19	Psion Camera	90
4.19.1	Using the Camera	90
4.19.2	Moving Photos to Omnii	91
4.19.3	Opening a Photo	91
4.19.4	Deleting a Photo	92
4.19.5	Using the Video Recorder	92
4.20	PsionVU Access	93
4.20.1	Administrator Password	93
4.20.2	Shell Settings	94
4.20.3	Restrictions	96
4.20.4	Control Panel Settings	97
4.20.5	Import/Export to File	97
4.21	Remote Desktop Connection	98
4.22	Scanners	98
4.22.1	Barcodes	99
4.22.1.1	Scanner	99
4.22.1.2	Restoring Default Settings	99
4.22.2	Options	100
4.22.2.1	Double Click Parameters	101
4.22.2.2	Display Parameters	101
4.22.2.3	Data Handling	102
4.22.3	Translations	102
4.22.3.1	Case Rules	104
4.22.4	Ports	104
4.22.4.1	Port Replicator Port A (COM5) and Port B (COM6)	104
4.23	Storage Manager	106
4.23.1	Formatting a Memory Card	106
4.23.2	Creating Partitions	106
4.23.3	Partition Management	107
4.24	Stylus Properties	109
4.24.1	Double-Tap	109
4.24.2	Calibration	109
4.24.3	Touch	110

Regulatory Draft

4.25	System Properties	110
4.26	Total Recall	111
	4.26.1 Creating a Backup Profile	111
	4.26.2 Restoring a Profile	113
	4.26.3 Viewing a Profile	113
	4.26.4 Deleting a Profile	114
	4.13.1 Trigger Mappings	81
	4.13.2 Add and Edit Trigger Mapping.	82
4.27	TweakIt	114
	4.27.1 Advanced.	114
	4.27.1.1 Advanced CE Services Settings	114
	4.27.1.2 Advanced Interface and Network Settings.	115
	4.27.1.3 Advanced Services Settings	115
	4.27.2 User	116
	4.27.2.1 User Display Settings	116
	4.27.3 TweakIt	116
4.28	Voice - Using the Phone Dialer	116
	4.28.1 Dialing a Number	117
	4.28.2 Voice Menu.	117
	4.28.3 File Menu - Phonebook Management	119
4.29	Volume & Sounds Properties	120
	4.29.1 Volume Adjustments	121
	4.29.2 Sound Adjustments.	121
4.30	Wi-Fi Config	121
	4.30.1 Wi-Fi Config: Status	122
	4.30.2 Wi-Fi Config: Configure	122
	4.30.2.1 Authentication Mode	123
	4.30.2.2 Encryption	124
	4.30.2.3 EAP	124
	4.30.2.4 Verify Server Certificate	125
	4.30.2.5 Enable OPMK.	125
	4.30.2.6 Connecting the Wireless Network.	125
	4.30.3 Configuring TCP/IP	126
	4.30.3.1 IP Address	126
	4.30.3.2 Name Server	128
	4.30.4 Wi-Fi Config: Advanced.	128
	4.30.5 Monitoring the Network Connection	129

4.1 Overview of Software

4.1.1 Psion Software Advantage

Psion Software Advantage is a collection of applications and features designed to support system administrators and end users. These tools enable enterprises to customize the product to meet their needs and to maximize productivity.

AGPS	Psion Camera
App Launch Keys	PsionVu
Battery Health	TweakIt
Bluetooth Manager	Scanner
Compass	Total Recall
Dr. Debug	Manage Triggers
PartnerUp	WiFi Config
Psion A.R.C. Client	

4.1.2 Microsoft Software

Windows CE 6.0 R3 is a 32-bit, real-time, multitasking Operating System. The OS features a small footprint, with compatibility to port existing Win32 applications and Touch & Gesture support.

Some of the major WCE 6.0 R3 components are:

- Flash Lite
- Internet Explorer Embedded
- Microsoft WordPad
- Remote Desktop Connection
- Windows Explorer

4.2 The Control Panel

The Windows Embedded CE *Control Panel* provides a group of applications through which you can set a variety of system-wide properties, such as mouse sensitivity, network configuration and the desktop color scheme.

When Omnii boots up, the startup desktop (Windows Classic Shell) is displayed, and any applications stored in the Startup folder start up immediately.

To access the *Control Panel*:

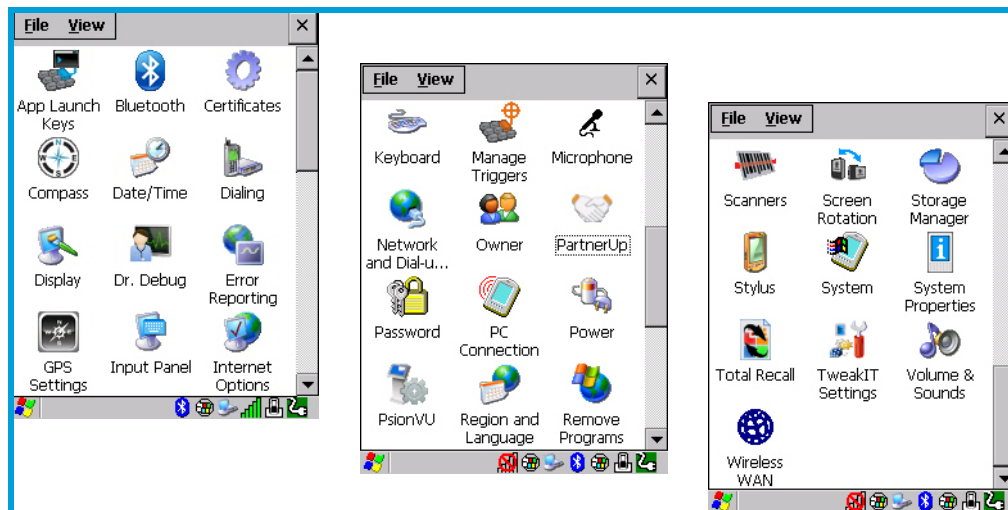
- Press **[Windows]** to display the *Start Menu*.
- Tap on **Settings>Control Panel**.

If you're using the keyboard:

- Press **[Windows]** to display the *Start Menu*.
- Highlight **Settings** in *Start Menu*, and press the [RIGHT] arrow key to highlight the *Control Panel*.
- Press the **[ENTER]** key.

The *Control Panel* folder contains icons used in the setup of your Omnii.

Figure 4.1 Control Panel Icons



4.2.1 Control Panel Icons

The *Control Panel* provides a group of applications that allow you to customize and adjust settings on your Omnia. This section shows the related icons in the Control Panel and gives a brief description of each.

App Launch Keys

By mapping keys to applications using this program, you can then launch those applications from a single key-press.

Bluetooth

Opens the Bluetooth Manager which provides options for configuring various Bluetooth peripherals. It also provides the capability to use a *Bluetooth*-enabled cellular phone as a data modem to exchange information with other *Bluetooth* devices and provide network access.

Certificates

This program provides access to the Certificates Manager and Stores. The Certificates Manager displays the certificates in the Windows Certificates Store, and allows you to import, delete, and view these certificates. "Certificates" on page 63 directs you to the appropriate setup information.

Compass

This program provides you with a compass, and enables you to calibrate it.

Date/Time

Allows you to set the current Month, Date, Time, and Time Zone on your unit.

Dialing

Specifies dialing settings, including area code, country code, dial type and the code to disable call waiting. You can store multiple patterns—for example, 'Work', 'Home', and so on using this dialog box.

Display

Changes the display backlight and the appearance (colour scheme) on the unit desktop.

Dr. Debug

Provides both error diagnostic and troubleshooting tools.

Error Reporting

Allows you to enable or disable Microsoft error reporting prompts.

GPS Settings

Allows you to enable and configure GPS operation.

Imagers

The Imagers applet is used to create, modify, delete, and activate imager settings. This icon is only present when the appropriate imager is installed. For detailed information, see Appendix B: "Imager & Camera Settings".

Input Panel

Provides the framework for a Microsoft Soft Input Panel (SIP) should you need to design your own SIP, or change some soft keyboard options.

Internet Options

Provides options to configure your Internet browser. You can determine items such as the default and search page that the browser applies when connecting to the Internet, the cache size, the Internet connection options, and the security level that is applied when browsing.

Keyboard

Toggles character repeat on and off and specifies delay and rate for repeated characters. It also allows you to adjust the keyboard backlight threshold and intensity, and many other functions.

Manage Triggers

This utility allows you to define buttons as triggers for different devices. For example you would use this utility to configure a button for the scanner, RFID reader, and camera.

Microphone

Enables you to adjust the gain for the specific microphones associated with your hand-held.

Network and Dial-up Connections

Displays network interfaces and allows new dial-up and VPN interfaces to be created. It also allows Windows configuration of the interface. Refer to "Connectivity" on page 17 for details.

Owner

Provides fields in which you can specify owner information. A *Notes* tab allows additional information to be entered and displayed when the unit is powered up. *Network ID* tab information is used to access network resources. (This information should be provided by your System Administrator.)

PartnerUp

This app displays a number of pre-loaded applications. By tapping on an application in the list, you are taken to the associated web site and allowed to install the application.

Password

Allows you to assign a password to restrict access to elements of the unit. Once assigned, password access cannot be circumvented so it is important that you write down your password and keep it in a safe place.

PC Connection

Enables direct connection to a desktop computer (or through ActiveSync—see "Data Transfer" on page 17). Selecting the *Change Connection* button allows you to change the type of direct connection to your PC.

Power

Displays battery pack power status. (Alternately, battery status can be accessed through the taskbar.) Additional tabs allow you to determine suspend states and specify a suspend threshold.

PsionVU

PsionVU enables you to customize your computer settings, remove or add shortcuts to the desktop and Control Panel, and lock down access to various different components on the computer and the system tray icons for security. With *PsionVU* and *PsionVU Shell* (see “The PsionVU Desktop Shell” on page 41) you can customize the entire look and feel of your User Experience.

Region and Language

Allows you to specify the local language that is to be displayed on the hand-held screen along with the format of numbers, currency, time and date for your region.

Remove Programs

Lists the programs that can be removed from your unit. To remove a program, select it and then click on the **Remove** button.

Scanners

Provides scanner parameters and the barcode symbologies that the Omnia barcode scanner will successfully read.

Screen Rotation

This feature enables you to change the screen rotation between landscape or portrait.

Storage Manager

Allows you to view information about the storage devices that are present, such as SD-MMC flash cards. For details, see page 106.

Stylus

Adjusts how Windows Embedded CE recognizes your double-tap (as slow or rapid successive taps). In the *Calibration* tab, you can recalibrate your touchscreen by tapping on the **Recalibrate** button and following the directions on the screen.

System

You can display the system and memory properties, as well as create your device name. In the *Memory* tab, you can allocate memory between storage memory and program memory.

System Properties

Identifies the computer’s software and hardware components, indicating which components are installed, their version or part numbers, and whether they are enabled or disabled.

Total Recall

Provides access to a backup\restore and deployment utility to maintain applications and settings over cold reboots and for multiple devices.

TweakIt

Allows you to change Advanced System Settings (interface, network, and servers), User System Settings (display font size), and provides the Registry Editor.

Volume & Sounds

Allows you to adjust the volume of the sound emitted to indicate events like warnings, key clicks, and screen taps. You can also configure system (Windows) sounds and .wav files.

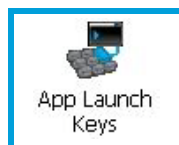
Wireless WAN

Provides access to technology like GSM/GPRS, which allows wide area networking capability such as internet browsing via GSM/GPRS. It also provides access to the Phone API. For detailed information, see Appendix F: “Wireless Wide Area Network (WWAN) Settings”.

4.3 App Launch Keys

The *App Launch Keys* icon allows you to map a key to an application so that you can then launch the application from a single key-press.

- In the *Control Panel*, choose the **App Launch Keys** icon.



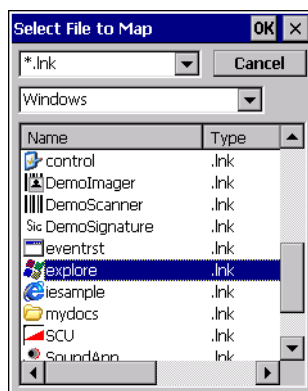
To assign an application key:

- Tap the **Add** button.



- Press the key you want to use to launch an application. (If an unsupported key is pressed, a message appears on this screen letting you know.)

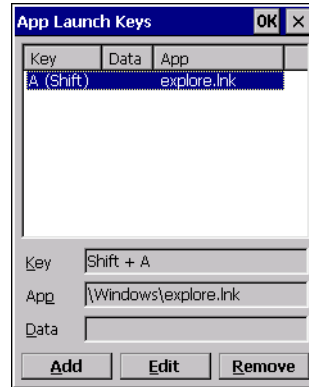
The cursor moves to the *App* field and a new screen is displayed where you can choose the application to which you want to assign the application key. If you need to, you can *Browse* through the information in your Omnii until you locate the application you want to launch.



- Once you've selected the file you want to map, tap on **OK**.

The cursor moves to the *Data* field. You can use this field if you need to define command line parameters for your application. If you don't want to assign any parameters, you can leave the *Data* field blank. If, for example, you want to assign an application launch key to launch the *WordPad* application, you can leave this field blank. If you want to assign an application launch key that will open a specific document in the *WordPad* application, you need to browse to and choose that document while the cursor is in the *Data* field.

- Tap on **OK**.



- If you need to Edit, Remove or Add another *App Launch Key*, you can do it from this final screen. Otherwise, tap on **OK** to save your *Application Launch Key*.
- To launch the application you chose, press the application key you assigned.

4.4 Bluetooth® Setup

Bluetooth is a global standard for wireless connectivity for digital devices and is intended for Personal Area Networks (PAN). The technology is based on a short-range radio link that operates in the ISM band at 2.4 GHz. When two *Bluetooth*-equipped devices come within a 10 metre (32 ft.) range of each other, they can establish a connection. Because *Bluetooth* utilizes a radio-based link, it does not require a line-of-sight connection in order to communicate.

It is possible to communicate with a variety of *Bluetooth* peripherals, including GSM/GPRS handsets, scanners, printers, and so on.

Psion provides built-in support for:

- GSM/GPRS universal handset
- *Bluetooth* printer
- *Bluetooth* headset

Keep in mind that *Bluetooth* and IEEE 802.11g radios both operate in the 2.4GHz band. Although Omnii includes features to minimize interference, performance of the system will not be optimal if you use both radios simultaneously. Typically, when both radios operate in the hand-held at the same time, they cannot transmit simultaneously—this has a negative impact on overall system throughput. To minimize the impact on the backbone 802.11 network, Psion recommends using *Bluetooth* peripherals that have low transaction rates (such as printers and scanners).

Bluetooth peripherals are configured by choosing the **Bluetooth** icon in the *Control Panel*. In addition, review the manual shipped with your *Bluetooth* device to determine the method used to associate with the Omnii host.



Note: The **Bluetooth** radio uses an internal antenna.

- In the *Control Panel*, choose the **Bluetooth** icon to display the **Bluetooth Manager** screen.



The **Bluetooth Manager** allows users to search, pair and connect to other *Bluetooth* devices within their personal area network.

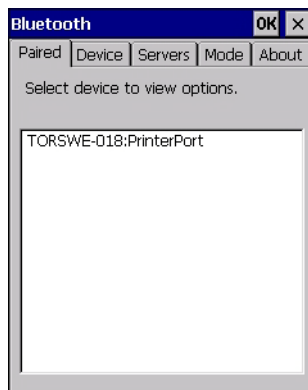
The *Bluetooth* radio is disabled by default. Before you begin the setup process:

- Tap on the **Mode** tab, and tap in the checkbox next to **Turn on Bluetooth**. Tap on **OK**.

When the radio is enabled, a *Bluetooth* icon appears the taskbar at the bottom of the screen. It is ready for setup.

4.4.1 Paired

This tab lists all paired devices and their corresponding services. The format of the name is <Device Name>:<Service Name>. Additional information may appear in this screen such as the Port Numbers for Serial Profiles service.

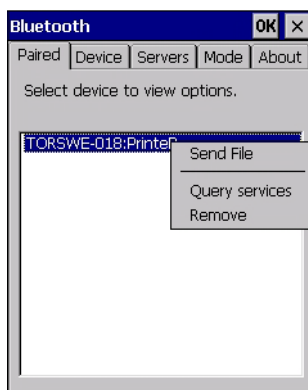


To learn how to scan for devices to pair, review "Device" on page 56.



Note: If a service is actively paired and connected, the device and its services are displayed in bold typeface in this list.

- Tap on an item in the *Paired* tab to display an associated pop-up menu.



The displayed menu depends on the type of the service chosen.

Query Services and Remove Commands

- *Query Services* displays a *Services* dialog box where a pairing service is chosen.
- *Remove* unpairs the highlighted service and deletes the entry from the tab.

OBEX OPP (Object Exchange-Object Push Profile) Commands

The *OPP* defines two roles—a *Push Server* and a *Push Client*. *Push Server* is the device that provides an object exchange server. *Push Client* is the device that pushes and pulls objects to and from the *Push Server*. *OBEX OPP* contains the following unique menu option:

- *Send File* displays an *Open File* dialog box where the file to be sent can be selected. When the transmission begins, another dialog box tracks the progress of the file transmission.

HSP/HFP (Headset Profile/Hands-Free Profile) Service Commands

The *HSP* (*Headset Profile*) allows users to connect their device to *Bluetooth* enabled headsets and other audio devices.

HSP/HFP services provide the following unique menu options:

- *Connect Audio* establishes an audio connection to the *Bluetooth* headset.
- *Disconnect Audio* disconnects the audio connection from the *Bluetooth* headset.
- *Volume Control* displays a dialog box where the headset and microphone volume can be adjusted.

4.4.2 Device



In this tab, users can discover and display *Bluetooth* devices.

4.4.2.1 Discovering and Removing Devices

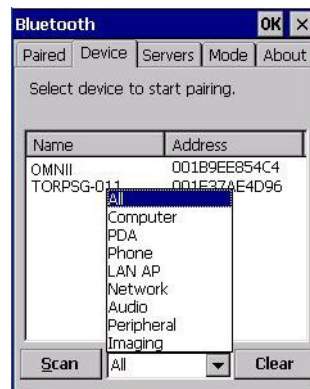
Scan discovers *Bluetooth* devices in range of Omnii and lists them in this tab. Any existing devices previously discovered and listed will also be displayed.

Clear removes all *Bluetooth* devices listed except those with currently paired and connected services.



Note: To limit the number of devices listed to a particular type of device, refer to "Filtering By Class of Device (COD)", next section.

4.4.2.2 Filtering By Class of Device (COD)



This menu allows you to filter the displayed devices by their COD. If, for example, you choose **Computer** from this menu, only the devices that have the matching *Computer* COD value will be displayed. Choosing *All* lists all detected devices.

4.4.2.3 Device Pop-up Menu



The *Device* pop-up menu allows you to pair a device, update a device name or delete a device from the list. *Pair* begins the pairing process by inquiring the services and profiles of the discovered device. An *authentication* dialog box is displayed the first time a *Bluetooth* device is paired.

Refresh Name repeats the device name inquiry, updating the name. This command is useful if a device is listed without a name (unknown), or if a device name has been changed remotely.

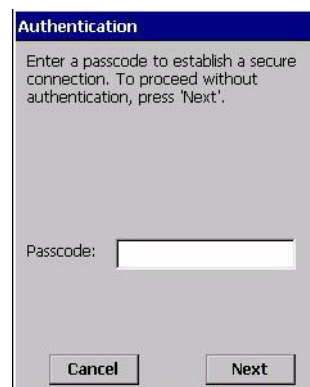
Delete removes this device from the list.

4.4.2.4 Pairing a Device

To pair devices:

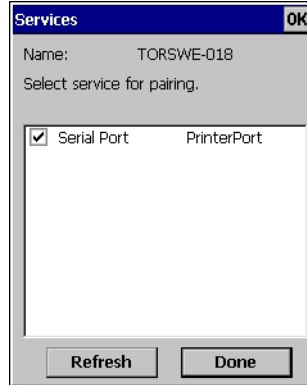
- Follow the manufacturer's instructions to place the remote device in pairing mode.
- Choose the **Devices** tab and **Scan** for devices in your area.
- When the scan is complete, tap on the **device** to which you want to pair.
- In the pop-up *Device* menu, tap on **Pair**.

An *Authentication* dialog box is displayed.



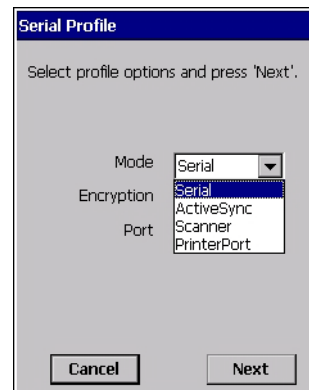
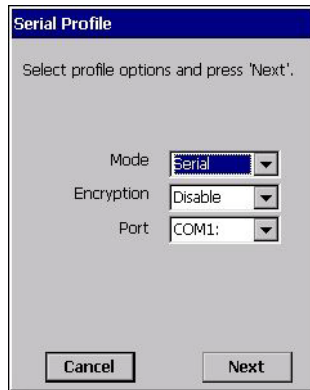
- If the remote device has authentication enabled, type the PIN in this dialog box.
- To proceed *without* authentication, tap on **Next**.

After entering the device *PIN*, the *Services* dialog appears with a list of services available for that device.



- Click in the checkbox to the left of the service to activate it.
- Click on **Done**.

Services that require more information present a configuration dialog box. *Serial Profile* is an example.



This dialog box offers a number of additional options such as enabling *Encryption* and selecting four different *Modes*: *Serial*, *ActiveSync*, *Scanner*, and *Printer Port*.

Serial is used for simple serial port communication.

ActiveSync is for ActiveSync-over-*Bluetooth*.

Scanner is used to create a connection to a barcode scanner. A serial connection is created, then the *Scanner Services* is notified of the connection so that the incoming barcode scan will be forwarded to *Scanner Services* directly.

Printer Port must be chosen here if you want to communicate with a paired *Bluetooth* printer. For further details, see “Mode” on page 59.

- Once you've completed the information, tap on **Next** and then in the *Services* screen, click on **Done**.

4.4.3 Servers



When a remote *Bluetooth* device initiates a *Bluetooth* connection to Omnii, the remote device is considered the '*Bluetooth* master' and the hand-held, the '*Bluetooth* slave'. In order for the remote device to connect to the hand-held, Omnii must offer a service in the form of a server. The *Servers* tab allows these services to be enabled and configured. There are three server services available: *Serial*, *Scanner* and *OBEX OPP*.

Serial server enables the Serial Port Profile server; a Serial Port can be selected from the drop-down menu. You can assign either a BSP or a COM prefix from the drop-down menu. BSP (*Bluetooth* Serial Port) was created by Microsoft to allow *Bluetooth* to have its own serial prefix in order to free up virtual COM prefixes as these are limited and are widely used.



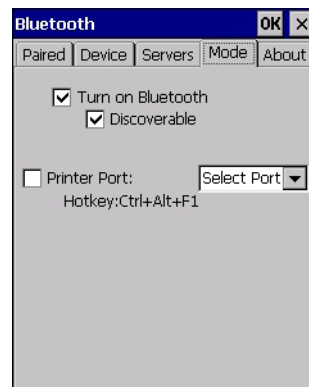
Note: Even after a Serial Port Profile server is created, an application must open the created port before a remote device can connect.

Scanner server enables a Serial Port Profile server and then relays it to the Scanner Service (SCS). This is used for *Bluetooth* barcode scanners that operate in client mode. SCS opens the server port and handles the scanner input.

OBEX OPP server enables the Object Push Profile server. A warm reset must be performed on Omnii after a change is made to this option. The OPP Server allows other *Bluetooth* devices to send files to this device.

- Tap on the checkbox to activate the server.

4.4.4 Mode



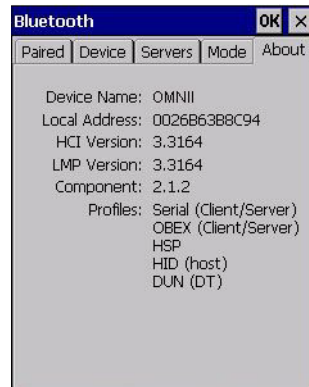
Turn on Bluetooth activates the *Bluetooth* radio.

Discoverable determines whether Omnii is visible or invisible to other devices.

Printer Port allows you to assign and enable a virtual outgoing COM port selected from the drop-down menu to communicate with a paired *Bluetooth* printer. Keep in mind that when a port is chosen, the printer must be on and connected to the chosen port for a remote device to be able to connect.

- Select a port within the *Printer Port* drop-down list, e.g. **BSP1**:
- Check the *Printer Port* check box.
- Open the *Device* tab and tap on **Scan**.
- Tap-and-hold each *Bluetooth* Printer device entry and then select **Pair**, key-in the Passcode (if needed) and then tap **Done**. DO NOT select any services!
- Close the *Bluetooth* Manager.
- Select the *Bluetooth* device to print to—you will need to key-in (or programmatically raise) the following key sequence [CTRL] [ALT] [F1].
- You can now select the *Bluetooth* device to which you wish to print.

4.4.5 About



Device Name displays the broadcasted name of the hand-held. The name can be changed in the *System Properties* applet: *Start>Settings>Control Panel>System icon>Device Name tab*.

Local Address displays the MAC address (BD_Addr) of the *Bluetooth* chip.

HCI Version & LMP Version display the version of the chip firmware.

Component indicates the version of the Psion *Bluetooth* Subsystem (the manager, drivers, etc).

Profiles lists the supported profiles on this specific Omnii.

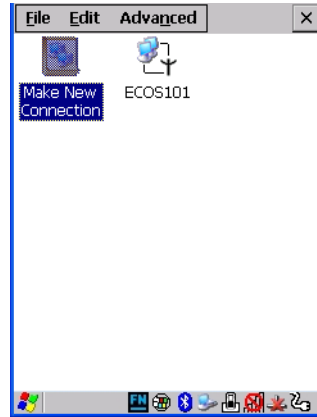
4.4.6 The Bluetooth GPRS WAN Connection

The following steps describe how to set up an Internet data connection using a GSM cellular telephone with Bluetooth. Omnii communicates via Bluetooth to the cell phone, which then accesses a WAN (Wide Area Network) and transfers data using GPRS.

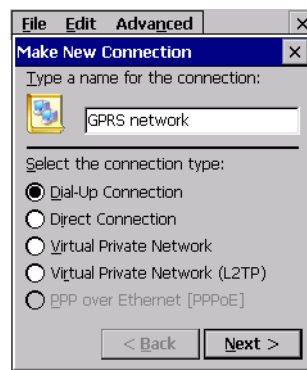
1. Enable the *Dial-Up Networking* service in the cell phone.
2. Make the phone *discoverable*.
3. Pair the phone service with the Omnii Dial-Up Networking service using the *Bluetooth Manager*. (For instructions on pairing devices, refer to "Pairing a Device" on page 57.)
4. To set up the Internet parameters, choose the **Network And Dial-up Connections** icon from the *Control Panel*.



5. Tap on **Make New Connection**.



6. In the *Make New Connection* dialog box, choose **Dial-Up Connection**. Enter a name for your GPRS network connection.

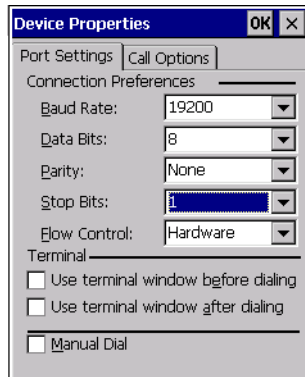


7. Choose the **Next** button to display the *Modem* dialog box.

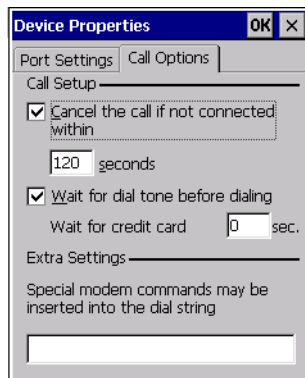


8. In the drop-down menu labelled *Select a modem*, choose the name of the modem with which you want to connect, and then choose the **Configure** button to display the *Device Properties* dialog box.

Omnii communicates via *Bluetooth* to your *Bluetooth* equipped cellular telephone and retrieves the parameters for the *Device Properties* dialog box. Omnii then disconnects.



- Under the *Call Options* tab, turn off **Cancel the call if not connected within**, and press [ENTER] to save your changes.

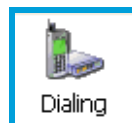


- In the *Modem* dialog box, choose the **Next** button to display the *Phone Number* dialog box.



The phone number you enter is network carrier dependent. Once you've specified all the necessary information, choose the **Finish** button.

- In the *Control Panel*, choose the **Dialing** icon.

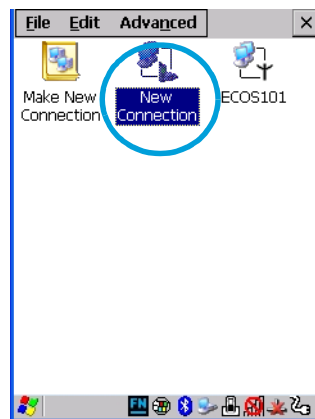


- The values in the *Dialing Properties* dialog box need to be edited according to your network carrier specifications.



Once you've edited this dialog box to reflect your network carrier requirements, press **[ENTER]** to save your changes.

13. At this point, return to the *Control Panel*, and choose the **Network and Dial-up Connections** icon.
14. In the network connection window, the new network configuration—in this case, *New Connection* is displayed. Tap on the **new** icon.



When you tap on your new connection, an onscreen message indicates the status of your connection: *connected*, *disconnected*, *error messages*, and so on.

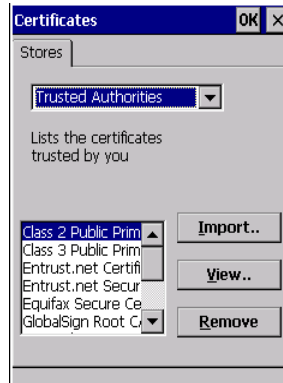
4.5 Certificates

This program provides access to the Certificate Manager and Stores. The Certificate Manager displays the certificates in the Windows Certificate Store, and allows you to import, delete, and view these certificates. Omnii checks that the certificate has been digitally signed by a certification authority that Omnii explicitly trusts. This option is used in conjunction with 802.1x authentication to enhance Omnii security.

- In the *Control Panel*, choose the **Certificates** icon.



Your Omnii has certificates preinstalled in the computer. *My Certificates* is the repository for the device's personal certificate store, *Other Authorities* is the repository for the intermediate certificate store, and *Trusted Authorities* is the repository for the Trusted Root certificate store.



You can import or remove certificates, and view certificate information for any listing, including names, dates, serial numbers, etc.

For a detailed description about Certificate setup for both the server and client-side devices (Omnii Hand-Held Computers), refer to the following website:

<http://www.microsoft.com/windowsserver2003/techinfo/overview/security.msp>

4.6 Data Transfer between Omnii and a PC

Data transfer options vary slightly depending on the type of operating system installed in your PC.

For Windows XP SP2 operating systems or earlier, Microsoft® ActiveSync® connectivity software can be used to connect your Omnii to PCs.

If the Windows Vista®, Windows 7 or later, operating system is installed in your PC, ActiveSync is not required to transfer data between your Omnii and your PC.

By using a Snap Module or Desktop Docking Station with your Omnii, you can connect to a PC with a cable and:

- View Omnii files from Windows Explorer.
- Drag and drop files between Omnii and the PC in the same way that you would between PC drives.
- Back up Omnii files to the PC, restore them from the PC to the hand-held again, etc.

4.6.1 Uploading Data in a Docking Station

The Desktop Docking Stations allow your hand-held to upload transaction data to a server computer when a radio link is not available. When Omnii is properly inserted in a docking station, a dock icon is displayed in the taskbar at the bottom of the unit screen. For detailed information, refer to “Desktop Docking Stations - Models ST4002 and ST4003” on page 141.

4.6.2 Using Microsoft ActiveSync



Note: If you use a serial port to connect devices like Omnii to your desktop computer, the connection may not succeed because ActiveSync has trouble connecting at non-default baud rates.

To work around this problem, set the ActiveSync baud rate on the desktop to use the same baud rate as the device. You can set the baud rate by editing the registry on the desktop host computer, as detailed in the steps outlined at the following website:

<http://support.microsoft.com/kb/324466>

To install ActiveSync, follow the step-by-step instructions provided with the program's setup wizard. For details, go to the following website and type the name into the search box:

<http://www.microsoft.com/downloads/en/default.aspx>

4.6.3 Using Windows Mobile Device Center

If you are running *Windows Vista*, *Windows 7*, or later, your data transfers do not require ActiveSync. Instead, you will need to download *Windows Mobile Device Center*. For instructions, go to the following website and type the name into the search box:

<http://www.microsoft.com/downloads/en/default.aspx>

To transfer data between your PC and your hand-held:

- Tap on **Start>Computer** to display the drives. Omnii will be visible here.
- Open drives, files and folders as you would on your PC.

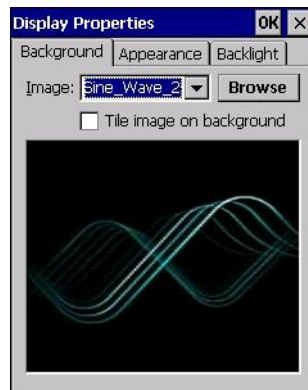
4.7 Display Properties

- In the *Control Panel*, choose the **Display** icon.



4.7.1 Background

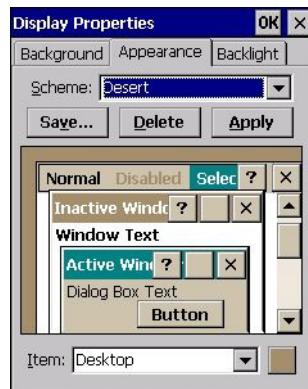
- In the *Display Properties* dialog box, open the **Background** tab.



This dialog box allows you to customize your background image.

4.7.2 Appearance

- In the *Display Properties* dialog box, open the **Appearance** tab.



This dialog box allows you to customize the display colour scheme.

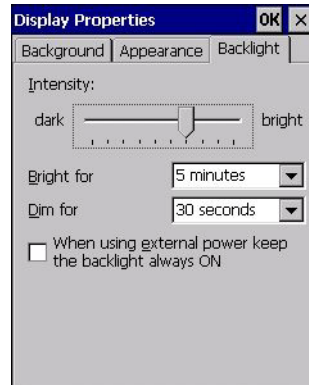
4.7.3 Backlight

The backlight is activated for a configurable amount of time. The *Display Properties* dialog box in the *Control Panel* allows you to specify the intensity of the backlight along with how long the backlight remains on when the unit is not in use (no key press, scanner trigger, etc.).



Note: Keep in mind that this option may be restricted to supervisory use only.

- In the *Display Properties* dialog box, open the **Backlight** tab.



Note: Backlight changes take effect immediately. You do not need to reset the unit. To maximize battery run time, keep the display backlight brightness and active durations as low as possible.

Intensity

This parameter is used to adjust the light intensity of the Omnii backlight. Sliding the bar to the left lowers the light intensity, and sliding it to the right raises the intensity.

Bright For

The value chosen from this drop-down menu determines the duration of time that the backlight stays on at the configured intensity after the last user action (keypress, scan trigger).

Dim For

The value chosen from this drop-down menu determines the duration of time that the backlight stays on at half the configured intensity (dimmed backlight) after expiration of the Bright For delay and as long as no user action takes place (such as a keypress or scan trigger). At the expiration of the Dim For duration, the display backlight shuts off.

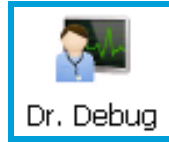
External Power Checkbox

When you select the checkbox next to *When using external power keep the backlight always ON*, the backlight remains ON at the configured intensity when Omnii is operating with external power (not battery power). If Omnii is drawing power from its battery, this option is ignored and the other parameters defined in *Display Properties* dialog box take effect.

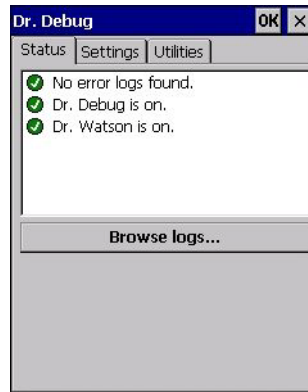
4.8 Dr. Debug

Dr. Debug is an error diagnostic and troubleshooting tool.

- Tap on **Start>Settings>Control Panel**. Tap on the **Dr. Debug** icon.

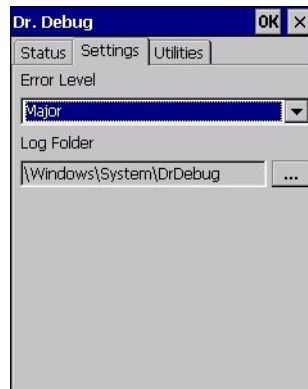


4.8.1 Status



This tab indicates the status (on/off) of the debug engines. Tapping on **Browse logs** displays error logs for your review. The logs should be used as reference when working with Psion Technical Support personnel.

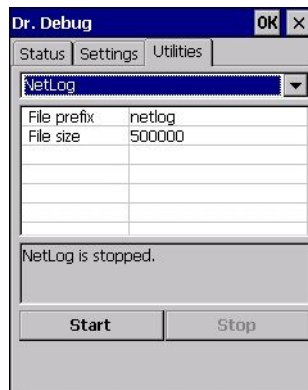
4.8.2 Settings



- Choose an **Error Level** from the drop-down menu.

- To change the location where debug information will be stored, tap on the button to the right of the *Log Folder* option.

4.8.3 Utilities

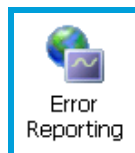


The *Utilities* tab is used to log network traffic. When you tap on the **Start** button, debug data is collected so that, if necessary, it can be forwarded to a Psion technician for evaluation.

4.9 Error Reporting

Error Reporting allows you to enable or disable Microsoft error reporting prompts.

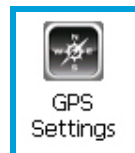
- Tap on **Start>Settings>Control Panel>Error Reporting** icon to access your options.

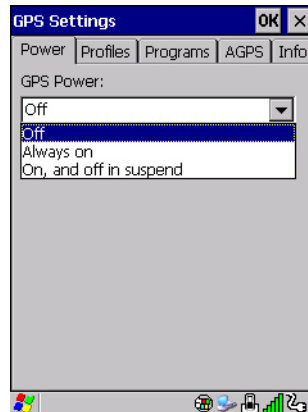


4.10 GPS (Global Positioning System) Settings

This applet allows you to define how the GPS module operates. You can determine when the GPS module is powered and operating, and choose from a set of GPS profiles built into the modem. You can also set up the AGPS Manager (an assisted GPS utility).

- Tap on **Start>Settings>Control Panel>GPS Settings** icon.



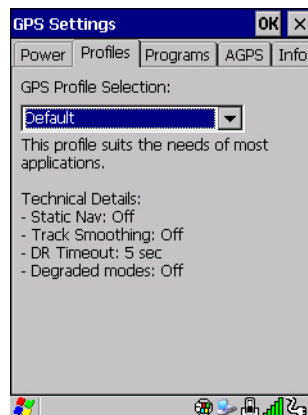


4.10.1 Power

This tab allows you to dictate how the GPS module behaves. The *GPS Power* drop-down menu is used to control when the GPS is powered on and off.

- *Off* - the GPS module is left off, always.
- *Always on* - the GPS module is powered on at all times regardless of the power state of the hand-held (suspend or standby).
- *On, and off in suspend* - the GPS module is powered on, but if Omnii is in suspend mode, the GPS module is turned off.

4.10.2 Profiles

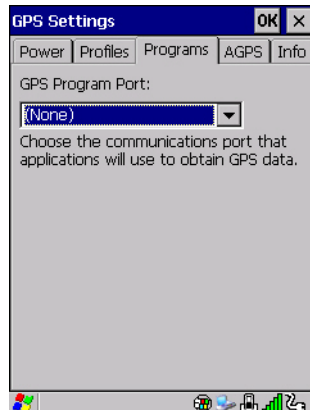


Tapping on the *GPS Profile Selection* drop-down menu allows you to choose an appropriate profile: *Default*, *Automotive* or *Pedestrian*.

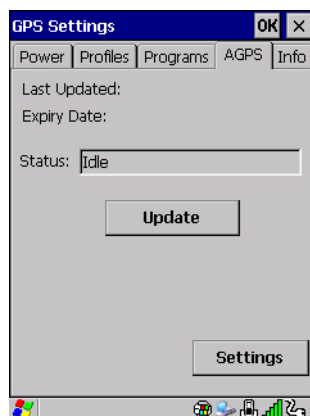
- *Default* profile is a good general profile suitable for most uses.
- *Automotive* profile is designed for in-vehicle use, providing quick location updates as the vehicle moves. When the GPS module is set to this profile and the vehicle enters an area such as a tunnel where satellite coverage is interrupted, it *will* attempt to predict the vehicle position.
- *Pedestrian* profile is designed for those using the GPS module while walking. It takes into account the slower pace of the pedestrian when mapping the location of the user. When the GPS module is set to this profile and the operator moves into an area where satellite coverage is interrupted, the GPS module *will not* attempt to predict the operator's movement.

4.10.3 Programs

Tap on the *GPS Program Port* drop-down menu to choose the communication (COM) port that the GPS software will use to communicate with the GPS receiver.



4.10.4 AGPS



To determine your location, a GPS module receives data from three or more GPS satellites in fixed orbit around the Earth. The GPS module triangulates your location based on the time it takes for signals to get to and from the satellites. This works well in fairly clear areas, outdoors for example. However, if you're attempting to triangulate your location in city centres where signals bounce off tall concrete buildings or from within a building, the GPS module will have greater difficulty calculating a fix.

AGPS reduces Time To First Fix (TTFF) and increases the likelihood of finding and keeping a fix in poor coverage areas such as indoor sites. AGPS downloads satellite ephemeris (orbital) data to Omnii periodically through Wi-Fi or WWAN. The downloaded data is used by the GPS module to speed the process of getting a fix.

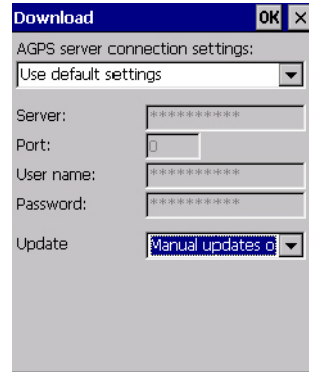
Update

- Click on the **Update** button to download *Extended Ephemeris (EE)* files from a secure host on the Internet using any interface that has an Internet connection. These files contain several days worth of ephemeris (orbital) data that can be used if the satellite's broadcast ephemeris is not available.

The *Status* field above the *Update* button displays the progress of the download, and once successfully downloaded, the *Status* field will read *Idle*.

Settings

- Click on the **Settings** button to define the *AGPS server connection settings*.

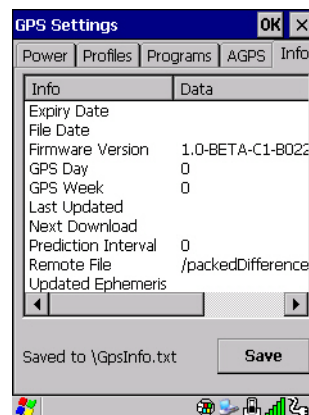


The *AGPS server connection settings* drop-down menu allows you to choose from two settings: *Use default settings* and *Use custom settings*.

The *Use default settings* option is generally acceptable for most applications. Note that aside from the *Update* field in which you can choose how long the fix is stored in your Omnia, the field values cannot be edited.

The *Use custom settings* option is generally used to configure devices that will have access only to an *intranet* rather than the *Internet* and should only be altered with the assistance of qualified Psion personnel. They will be able to help you configure your Psion devices and web server to retrieve the ephemeris data.

4.10.5 Info



This tab provides general information about the GPS module such as the firmware version, the date on which files were last updated, and so on. If GPS module support service is required, you may be asked to tap on the **Save** button in this tab and forward the information to Psion support staff.

4.11 Imager & Camera Settings

The Imagers applet is used to create, modify, delete, and activate imager and camera settings. The principle uses of the applet are to decode barcodes and to capture images. A *Demonstration Application* is provided to demonstrate how the imager works. Refer to “Demo” on page 37 for details.

Refer to Appendix B: “Imager & Camera Settings” for configuration details.

To launch this applet:

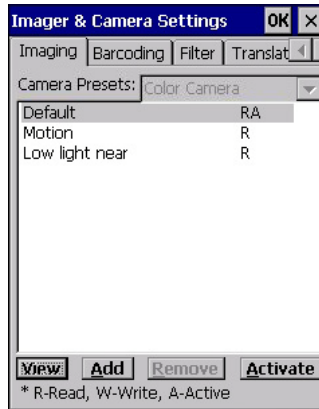
- In the *Control Panel*, choose the **Imagers** icon.





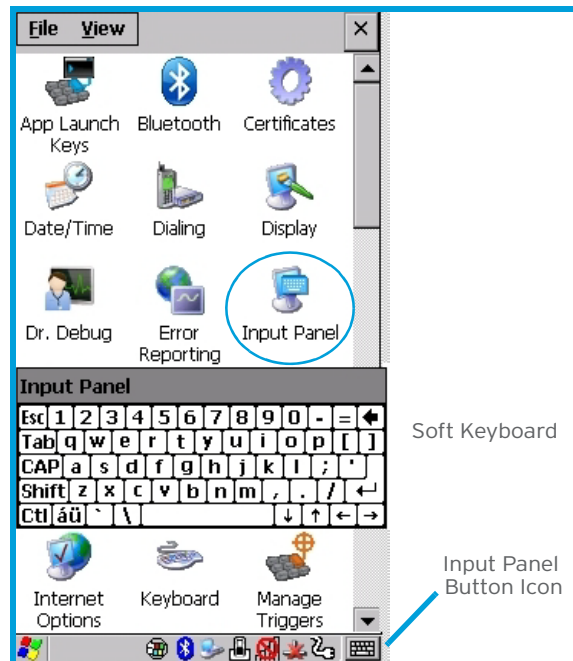
Note: This icon is only displayed when the appropriate imager is installed in your Omnii. If there is an imager installed but this icon is not present, additional software (ICS) may need to be installed.

*To enable a newly-installed imager, Press and hold down the **[FN]** key and the **[ENTER/Power]** key simultaneously for a minimum of three seconds.*



4.12 Input Panel

Omnii is equipped with a Soft Input Panel (SIP). Shown below is the standard Microsoft SIP, accessed from the Control Panel.



Tapping on the Input Panel button displays a soft input panel (soft keyboard) that can be customized using the Input Panel dialog box.



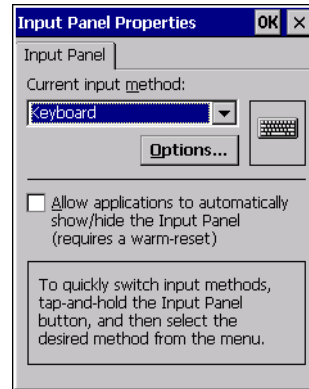
Important: *If the Input Panel button icon is not visible in the taskbar, from the 'Start' menu, tap on Settings>Taskbar and Start Menu. Tap the checkbox next to 'Show Input Panel Button'. To remove this icon from the taskbar, tap in the checkbox to erase the check mark.*

The soft keyboard operates just like a standard keyboard except that rather than pressing a key, you tap on letters, numbers, modifier keys, etc. on the Omnii screen.

To customize the appearance and behaviour of the soft keyboard:

Tap on the **Input Panel** icon in the *Control Panel*.

Figure 4.2 Input Panel Properties

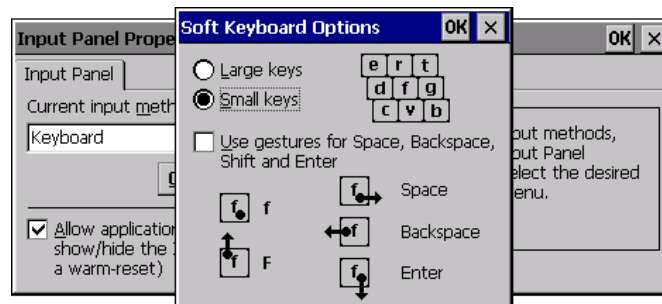


- Tap on the Options button to change the appearance of your soft keyboard.



Note: You can also display this dialog box by double-tapping on the Input icon in the far-right corner of the taskbar.

Figure 4.3 Soft Keyboard Options



4.12.1 Keyboard Properties

This icon displays the *Keyboard Properties* dialog box in which you can adjust the repeat rate of the keys, the intensity of the keyboard backlight and the behaviour of the [FN] and [SYM] modifier keys. This dialog box also allows you to define macro keys and Unicode characters.

- In the *Control Panel*, choose the **Keyboard** icon.

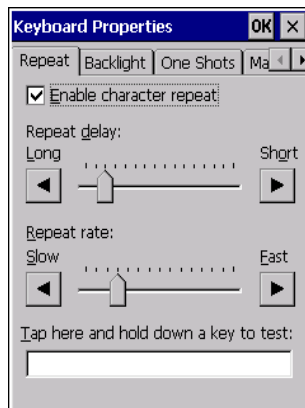


4.12.1.1 Key Repeat



Note: These settings apply when a key is held down continuously.

- In the *Keyboard Properties* dialog box, open the **Repeat** tab.



Repeat Delay

The value assigned for this parameter determines the delay in milliseconds between repeat characters. Sliding the *Repeat Delay* bar to the left increases the delay between key repeats, and sliding the bar to the right shortens the repeat delay time.

Repeat Rate

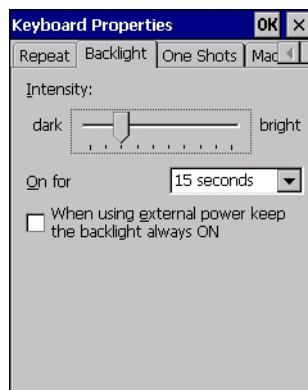
The value assigned for the *Repeat Rate* parameter determines how quickly the key you press repeats and is measured in characters per second (cps). Sliding the bar to the left slows the repeat rate, and sliding the bar to the right increases the repeat rate.



Note: Use the field at the bottom of this dialog box to test the repeat delay and rate settings you've chosen.

4.12.1.2 Keyboard Backlight

- In the *Keyboard Properties* dialog box, open the **Backlight** tab.



Intensity

This parameter is used to adjust the light intensity of the Omnii keyboard backlight. Sliding the bar to the left darkens the keyboard backlight intensity, and sliding it to the right lightens the intensity.



Note: The keypad backlight maximum brightness will decrease over time as it ages. Use mid-range intensity settings when possible to extend the backlight lifespan. When the backlight starts to dim, use this parameter to make it brighter.

ON For

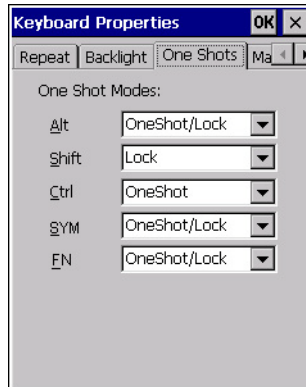
The value chosen from this drop-down menu determines the duration of time that the keyboard backlight stays on after the last user action (keypress or scan trigger).



Note: Tapping in the checkbox next to **'When using external power, keep the backlight always ON'** forces the keypad backlight to remain on when the unit is operating with external power.

4.12.1.3 Keyboard One Shot Modes

- In the *Keyboard Properties* dialog box, open the **One Shots** tab.



The options in this tab allow you to determine how modifier keys on your Omnii behave. For each modifier key—[ALT], [SHIFT], [CTRL], [FN], and [SYM]—you have the following options in the drop-down menu: *Lock*, *OneShot*, and *OneShot/Lock*.



Note: Keep in mind that checking the taskbar lets you know whether or not these keys are locked on. For example, if the [FN] key is locked 'on', the taskbar at the bottom of the screen displays it underlined. If this key is displayed without the underline in the taskbar, you'll know that the key is not locked. It will become inactive following a key press.



Important: Once you've assigned a *One Shot* mode to a modifier key, you need to tap on the **OK** button at the top of the tab to activate your selection.

Lock

If you choose *Lock* from the drop-down menu, pressing a modifier key once locks it 'on' until you press the modifier key a second time to unlock or turn it off.

OneShot

If you choose *OneShot*, the modifier key remains active only until the next key is pressed.

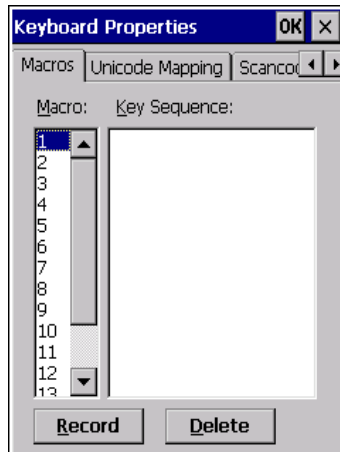
OneShot/Lock

OneShot/Lock allows you to combine these functions. When you choose this option and you press the modifier key once, it remains active only until the next key is pressed.

If you press the modifier key twice, it is locked 'on', remaining active until the modifier key is pressed a third time to turn it 'off'.

4.12.1.4 Keyboard Macro Keys

- In the *Keyboard Properties* dialog box, open the **Macros** tab.



A macro has 200 programmable characters (or “positions”). The macro keys can be programmed to replace frequently used keystrokes, along with the function of executable keys including [ENTER], [BACKSPACE] and [DEL] ([FN]-[BACKSPACE]), function keys and arrow keys.

Recording and Saving a Macro

You can program up to 6 macro keys, depending on your keyboard layout. You can also increase the number of virtual macro keys up to 15 using *Scancode Remapping* (for details, see “Scancode Remapping” on page 78).

- In the *Macro* menu highlight a macro key number, for example macro 1, to assign a macro to macro key [M1]. Choose the **Record** button.

A message screen is displayed instructing you to *Enter Key Strokes to Record*.



- Type the macro sequence you want to assign to the Macro key. You can type text and numbers, and you can program the function of special keys into a macro.
- When you’ve finished recording your macro sequence, press the key sequence: [CTRL] [ALT] [ENTER], or choose the **Stop Recording** button.

A new screen called ‘Verify Macro’ displays the macro sequence you created. The Save button is highlighted.

- Press [ENTER] to save your macro, or highlight CANCEL and press [ENTER] to discard it.

Executing a Macro

To execute a macro:

- Press the macro key to which you’ve assigned the macro. For example, if you created a macro for *macro key 1*, press [M1] to execute the macro.

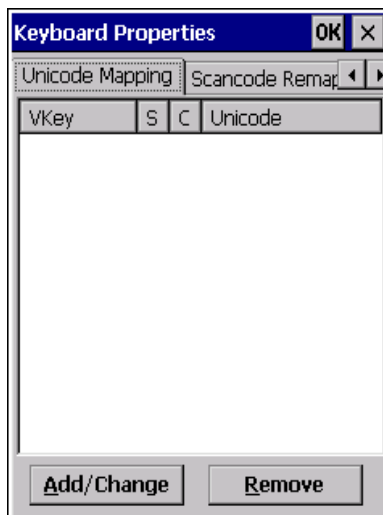
Deleting a Macro

To delete a macro:

- In the *Macros* tab, highlight the *macro number* you want to delete.
- Choose the **Delete** button.

4.12.1.5 Unicode Mapping

- In the *Keyboard Properties* dialog box, open the **Unicode Mapping** tab.



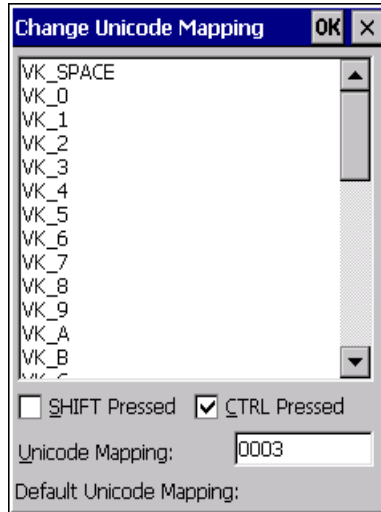
The *Unicode Mapping* tab is used to map combinations of virtual key values and [CTRL] and [SHIFT] states to Unicode™ values. This tab shows the configured Unicode character along with the Unicode value. For example, the sample screen above shows “a (U+0061)” indicating that the character “a” is represented by the Unicode value “0061”, and so on. Keep in mind that Unicode configurations are represented as hexadecimal rather than decimal values.

All user-defined Unicode mappings are listed in the *Unicode Mapping* tab in order of virtual key value, and then by order of the shift state. If a Unicode mapping is not listed, the Unicode mapping is mapped to the default Unicode value.

Adding and Changing Unicode Values

Important: *Changes to Unicode mappings are not saved until you exit the Keyboard Properties dialog box.*

- Choose the **Add/Change** button.



- Highlight a value in the Unicode mapping list. In the sample screen above, a value will be assigned to virtual key 0 (VK 0).
- Position the cursor in the *Unicode Mapping* field, and type a **Unicode value** for the highlighted key.



Note: To add a shifted state, [SHIFT] and/or [CTRL], press [TAB] to position the cursor in the checkbox next to 'SHIFT Pressed' and/or 'CTRL Pressed'. Press [SPACE] to select the shift state you want to assign.

Removing Unicode Values

- In the *Unicode Mapping* tab, highlight the item you want to delete, and choose the **Remove** button.

4.12.1.6 Scancode Remapping

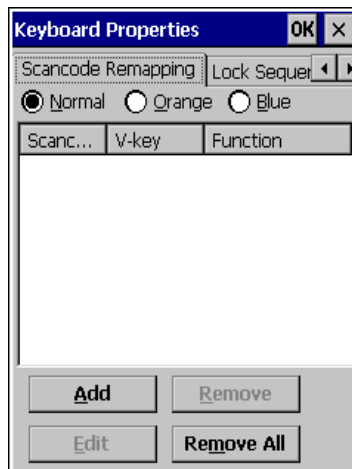
A scancode is a number that is associated with a physical key on a keyboard. Every key has a unique scancode that is mapped to a virtual key, a function or a macro. *Scancode Remapping* allows you to change the functionality of any key on the keyboard. A key can be remapped to send a virtual key (e.g. VK_F represents the 'F' key; VK_RETURN represents the [ENTER/Power] key, etc.), perform a function (e.g. turn the scanner on, change volume, etc.) or run a macro.

There are three different tables of scancode mappings: the *Normal* table, the *FN* table and the *SYM* table.



Note: When using the *Mobile Devices SDK Developers' Guide* (P/N 8100016), note that the [ORANGE] key is interchangeable with the [SYM] key. Similarly, in the context of the scancode mapping tables, 'Orange' is interchangeable with 'SYM'.

The *Normal* table defines unmodified key presses; the *FN* table defines key presses that occur when the [FN] modifier is on; the *SYM* table defines key presses that occur when the [SYM] modifier is on. The default mappings of these scancodes can be overwritten for each of these three tables using the *Scancode Remapping* tab accessed from the *Keyboard Properties* dialog box.



The first column in the *Scancode Remapping* tab displays the scancodes in hexadecimal. If the scancode is remapped to a virtual key, that virtual key is displayed in the next column labelled 'V-Key'. A virtual key that is 'Shifted' or 'Unshifted' is displayed in the third column labelled 'Function'.

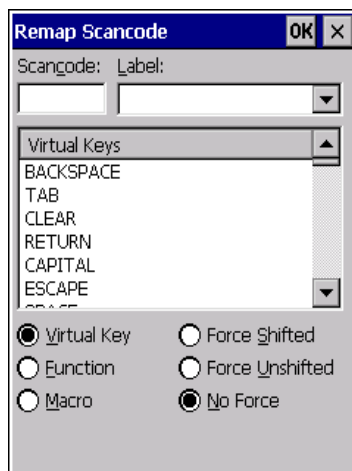
If the scancode is remapped to a function or a macro, the first and second columns remain blank while the third column contains the function name or macro key number (e.g., Macro 2).

Adding a Remap

To add a new remapping:

- Choose the **Add** button at the bottom of the dialog box.

The *Remap Scancode* dialog box is displayed.



- Type the scan code in hexadecimal in the field labelled *Scancode*.



Note: The *Label* field displays the default function of the scancode you are remapping.

Virtual Key, Function and Macro

The radio buttons at the bottom of the dialog box allow you to define to what the scan code will be remapped: Virtual Key, Function or Macro.

When *Virtual Key* is selected, you can choose to force [SHIFT] to be *on* or *off* when the virtual key is sent. If *No Force* is selected, the shift state is dependent on whether the shift state is on or off at the time the virtual key is sent.

When *Function* is selected, a list of valid functions appears in the dialog box.

When *Macro* is selected, the macro keys available on your unit are listed in the dialog box.

- Choose **Virtual Key, Function** or **Macro**.
- Choose a function from the *Function* list in the dialog box, and tap on **OK**.

Editing a Scancode Remap

To edit a scancode:

- In the *Scancode Remapping* tab, tap on the remap you want to edit.
- Tap on the **Edit** button, and make the appropriate changes.
- Tap on **OK** to save your changes.

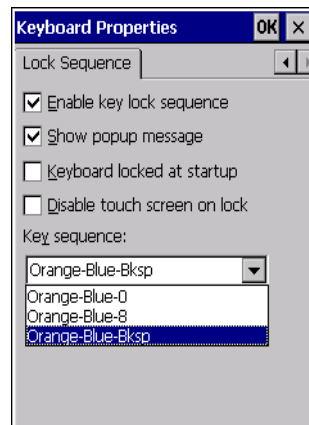
Removing a Remap

To delete a remap:

- In the *Scancode Remapping* tab, highlight the scancode you want to delete, and tap on the **Remove** button.
- Tap on **OK**.

4.12.1.7 Lock Sequence

The *Lock Sequence* menu allows you to lock the Omnii keyboard to prevent keys from being pressed accidentally when, for example, the unit is inserted in a holster.

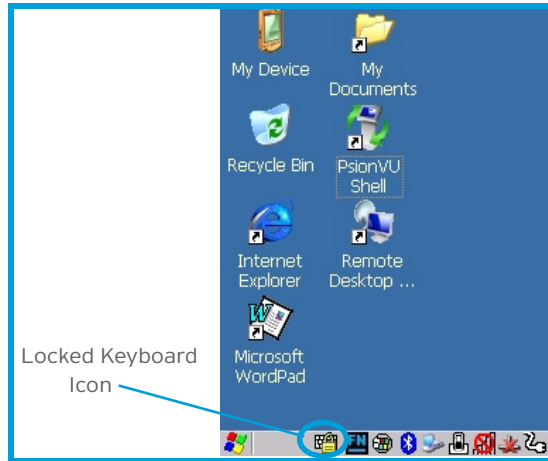


- To lock the keyboard, tap in the checkbox next to *Enable key lock sequence*.
- Tap in the checkbox next to *Keyboard locked at startup*.
- In the *Key sequence* drop-down menu, choose the key sequence you will need to type to unlock the keyboard.



Note: It is useful to leave the 'Show popup message' enabled (default) so that anyone attempting to use the keyboard will see the key sequence they will need to enter to unlock the keyboard displayed on the screen.

A *locked keyboard* icon is displayed in the softkey bar when the keyboard is locked.

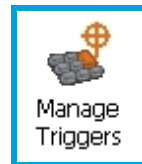


- Type the key sequence to unlock the keyboard.

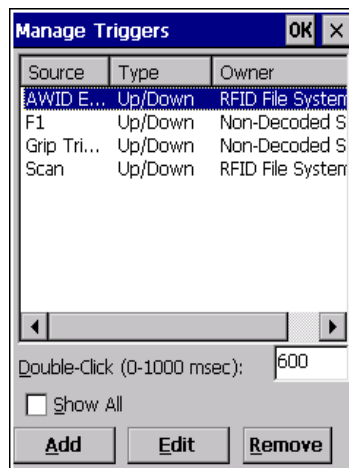
4.13 Manage Triggers

Allows users to configure how barcode scanners and other devices such as RFID readers are triggered. You can configure the trigger ID for each trigger button for both single- and double-click, and the double-click time.

- In the *Control Panel*, choose the **Manage Triggers** icon.



- In the *Manage Triggers* screen you'll see a list of trigger mappings.



4.13.1 Trigger Mappings

A trigger mapping is an association between a particular key on the keyboard and a driver or application, the module(s)—sometimes referred to as “trigger consumer(s)”—of the trigger source. Along with keyboard keys, the external trigger (scan button) is software-based. When the specified key is pressed, the owner (for example, a decoded scanner) is sent a message.



Important: *It is not possible to have two or more identical mappings—for example [F1] cannot be mapped to the Non-Decoded Scanner twice—even if the trigger type is different.*

A keyboard key that is used as a trigger source will no longer generate key data, or perform its normal function. For example, if the space button is used as a trigger source, it will not be able to send space characters to applications.

Double-Click

When a key is pressed and released, then pressed again within the configured time (between 0 to 1000 milliseconds), a double-click occurs. See also “Trigger-Press Type” on page 83.

Show All Modules

By default, the trigger mapping list only shows active mappings. Mappings for drivers or applications that are not currently active are not normally displayed. By checking this checkbox, all mappings, both active and inactive, are displayed.

Add

Tapping this button brings up the *Add Mapping* dialog (see page 82), so that you can add new trigger mappings.

Edit

Tapping this button brings up the *Edit Mapping* dialog (see page 82), so that you can edit existing trigger mappings.

Remove

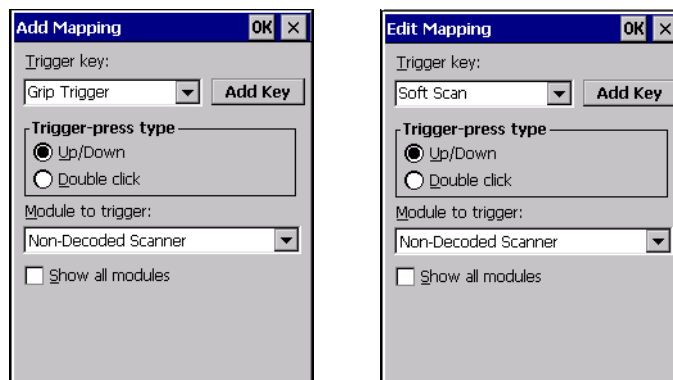
Tapping this button removes an existing mapping.

OK

The *OK* button in the top right of the *Manage Triggers* screen saves all changes made. If the cancel button *X* is tapped instead, or the [ESC] key is pressed, all changes made will be discarded.

4.13.2 Add and Edit Trigger Mapping

These dialogs allow you to add and edit trigger mappings.



Trigger Key

This drop-down list allows you to specify the source of the trigger events, such as the *Soft Scan*, *Left Scan*, etc., for the trigger module selected.



Note: It is possible to map the same source to different modules (trigger consumers)—for example, to both the Imager and Non-Decoded Scanner. If so, both devices/operations will occur simultaneously. This is not recommended in most cases, especially with devices such as Imagers or RFID Readers.

It is also possible to map different sources to the same module (trigger consumer)—for example, two different trigger keys can be mapped to the RFID File System.

Add Key

Only existing trigger sources are shown in the Source combo-box. To add a new source to this list, tap on the **Add Key** button. A dialog will pop up and allow you to select the keyboard key to use as a trigger source.



Trigger-Press Type

You can enable either an *Up/Down* or *Double Click* response to a trigger press. Normally, when a trigger (keyboard key, etc.) is pressed and released, a “trigger down” event is sent to the “owner”—that is, the application receiving the trigger press information—followed by a “trigger up”. If *Double Click* is chosen in this menu, when the trigger is pressed, released, and then pressed again, a “double-click” event will have occurred. If a mapping with the type *Up/Down* has also been configured for the same source, it will only receive the first set of trigger events.

Module Trigger

This identifies the driver or application receiving the trigger presses.

Show All Modules

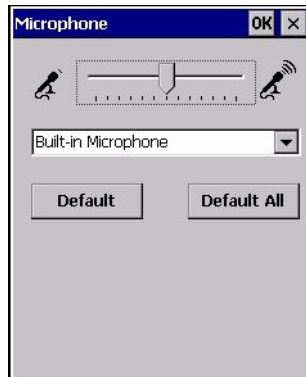
By default, inactive owners are not shown. By checking this checkbox, all owners, both active and inactive, are displayed.

4.14 Microphone

- In the *Control Panel*, choose the **Microphone** icon.



Use this dialog box to adjust the gain for the specific microphones associated with your hand-held.



- Tap on the drop-down menu, and choose the microphone for which you want to adjust the gain.
 - Slide the microphone tab to the left to decrease the gain and to the right to increase the gain.
- Tapping on the *Default* button sets the current microphone you've chosen to the default gain. Tapping on *Default All* sets *all* microphones listed to their default gain.

4.15 Open TekTerm

Open TekTerm is a powerful emulation application ideally suited for real time data transaction applications associated with mainframes and servers. Omnii includes unique features that support Open TekTerm, a Psion application that has the ability to maintain multiple simultaneous sessions with a variety of host computers. For detailed information, please refer to the *Open TekTerm Software User Manual*, P/N 8000073.

4.16 PartnerUp

This app displays a number of pre-loaded applications. Tapping on an app in the list takes you to an associated web site.

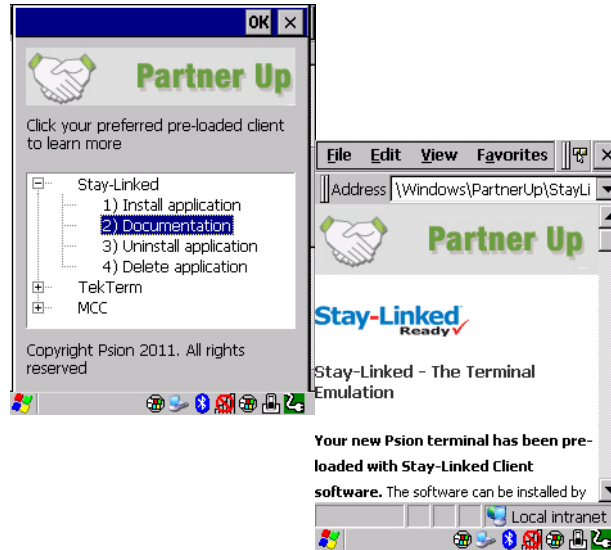
The operator can then install the application. If a license is required, it can be obtained by sending an e-mail to the software license mailbox or by contacting a Sales Representative from the Psion contact web page.

www.psimon.com/us/about/contact_psimon-offices.htm

Additional pieces of software such as a server must be obtained through Psion.



Tapping on a preloaded client in this screen displays a drop-down menu from which the operator can choose from an array of related options. In the example following, Stay-Linked Documentation was chosen.



4.17 Pocket PC Compatibility

Omnii supports the AYGShell API set that allows Pocket PC-compatible applications to run on the handheld. Windows Embedded CE includes application programming interface (API) compatibility support for the Microsoft Windows Powered Pocket PC 2002 shell in units running Windows Embedded CE.

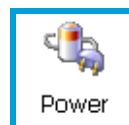
The website listed below describes the APIs exposed through AYGShell and the application compatibility between Windows Powered Pocket PC 2002-based applications and Windows Embedded CE based devices:

http://msdn.microsoft.com/library/default.asp?url=/library/en-us/dncenet/html/WINCENET_CEPCC_App.asp

4.18 Power Properties

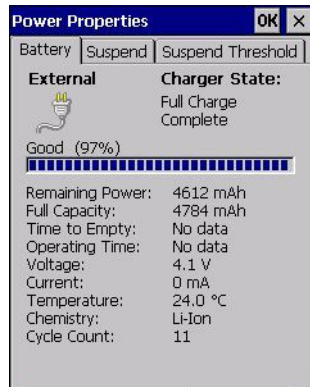
This icon displays a Power Properties dialog box that indicates the unit's battery capacity and allows you to manage battery use.

- In the *Control Panel*, choose the **Power** icon.



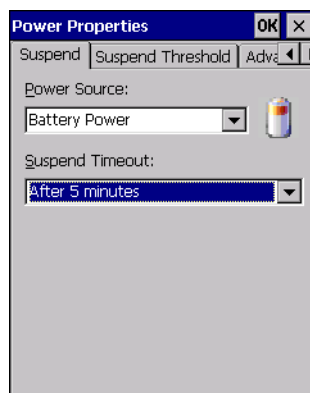
4.18.1 Battery Capacity

- In the *Power Properties* dialog box, open the **Battery** tab to view battery details.



4.18.2 Power Saving Suspend

- In the *Power Properties* dialog box, open the **Suspend** tab.



Power Source

This drop-down menu allows you to specify whether the unit is using *AC Power* or *Battery Power*.

Suspend Timeout

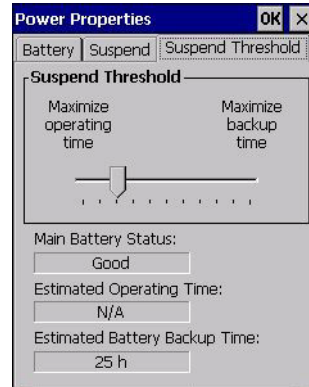


Important: *Psion recommends setting the Suspend value to 3 minutes. To further reduce power consumption, carefully consider the duration of time that the display backlight is 'on' (see "Backlight" on page 66).*

When Omnii is idle—not receiving any user input (a key touch, a scan, and so on) or system activity (serial data, an activity initiated by an application, and so on)—the hand-held uses the value assigned in the *Suspend Timeout* field to determine when the unit will go to sleep (appear to be off).

When the time in the *Suspend Timeout* field elapses without any activity, the unit enters *suspend* state. In suspend state, the Omnii CPU enters a sleep state, and wireless communication is shut off. The state of the device (RAM contents) is preserved. Pressing **[ENTER]** wakes the system from suspend state.

4.18.3 Suspend Threshold and Estimated Battery Backup



The *Suspend Threshold* adjustment tells the system when to shut down when the battery drains. If you choose *Maximum Operating Time*, the unit will run until the battery is completely empty; the RAM is only backed up for a short period of time. If you choose *Maximum Backup Time*, the hand-held shuts off with more energy left in the battery so RAM can be backed up for a longer period of time.



Important: *Selecting Maximum backup time will reserve approximately 20% of the battery capacity for memory backup. Once the battery is drained, the system RAM memory is lost and the unit must cold boot.*

In most real-time transaction environments this is not a problem (it only takes a few seconds to cold boot). Batch transaction environments, where data is not saved to a non-volatile memory (such as an SD FLASH card), may need to pay particular attention to this parameter. Psion does not recommend the storage of any valuable data in system RAM.

The Omnii Windows Embedded CE 6.0 environment does not store any critical data in RAM (such as the registry or file system).

If your application does not save data to RAM, Psion recommends keeping the Suspend Threshold setting as low as possible to maximize battery run time.

The *Estimated Battery Backup* is the amount of battery power that has been reserved or set aside to protect data until a charged battery can be installed in the hand-held. When the battery capacity is depleted up to the *Estimated Battery Backup* reserve specified in the *Suspend Threshold* menu, Omnii shuts off automatically and uses the reserve power to preserve the data stored on the computer. Once Omnii shuts down, it cannot be switched on until a fresh battery is installed, or the unit is inserted in a docking station or cradle.

- Slide the **Suspend Threshold** button to the right to increase the battery capacity reserved for backup purposes. Data will be preserved to a maximum of 124 hours.
- Slide the **Suspend Threshold** button to the left to decrease the power reserved for backup purposes; this increases the Omnii operating time—the amount of time the unit will operate before shutting down—but reduces the power reserved for backup purposes to a minimum of 24 hours.

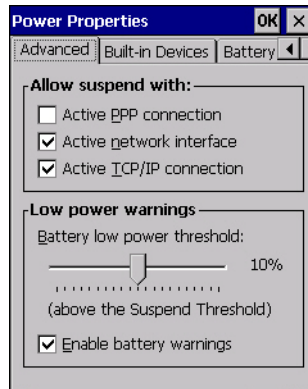
Internal super-capacitors will protect the data stored in the computer while the battery is swapped for a fully charged one.



Important: *Once the battery is removed, the super-capacitors will preserve the data stored on Omnii for approximately 5 minutes. It is critical that you install a charged battery before this time elapses.*

4.18.4 Advanced

- In the *Power Properties* dialog box, open the **Advanced** tab.



Allow Suspend With

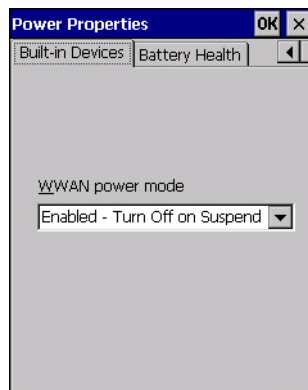
This menu allows you to specify whether or not your unit will enter Suspend Mode while it is operating with an active PPP connection, network interface or active TCP/IP connection.

Low Power Warnings

The sliding scale at the bottom of this menu allows you to specify the remaining battery capacity at which a warning message is displayed on the Omnii screen, from 0% to 20%.

4.18.5 Built-in Devices

- In the *Power Properties* dialog box, open the **Built-in Devices** tab.



WWAN Power Mode

This menu allows you to enable power to your WWAN radio, and whether or not the radio will turn off when Omnii enters Suspend Mode. To configure the radio, please refer to Appendix F: "Wireless Wide Area Network (WWAN) Settings".

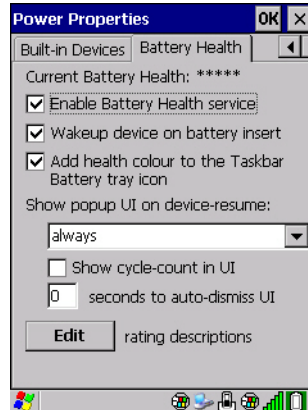
4.18.6 Battery Health

The Battery Health service provides an estimate of battery health based on a number of different measurements, beyond just capacity.



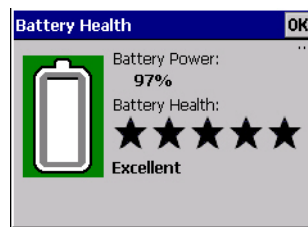
Important: *Battery Health is an estimate and should not be depended on to provide a 100% account of battery condition.*

- In the *Power Properties* dialog box, open the **Battery Health** tab.



Battery Health

The Battery Health default values are shown here as ***** (Excellent), *** (Used), and * (Battery should be replaced). If you tap on the battery icon in the taskbar, a pop-up screen will show the state of the battery. The image below shows the default *Excellent* status screen.



Enable Battery Health Service

This option allows you to enable the service. To access the menus after enabling the service, you will need to either wait until a resume from Suspend or restart Omnii.

Wakeup Device on Battery Insert

When this option is enabled, whenever the battery is replaced Omnii is powered up from Suspend and the current health of the battery is displayed.

Add Health Colour to the Taskbar Battery Tray Icon

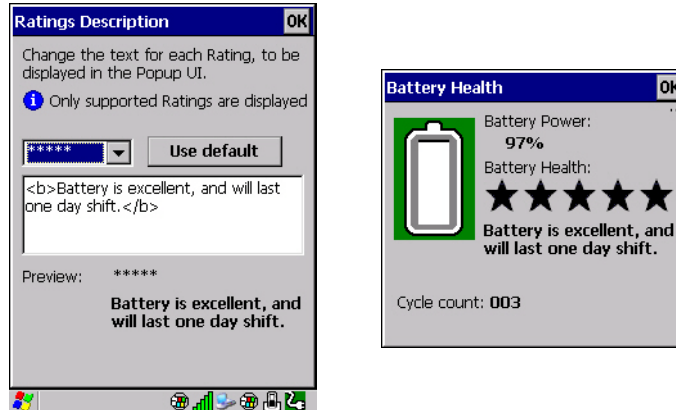
Enabling this option changes the background colour for the battery icon in the Taskbar, based on battery condition: *Green* (excellent), *Yellow* (used), and *Red* (battery should be replaced).

Show Popup UI on Device-Resume

You can decide when the battery status pop-up user interface (UI) will appear, for how many seconds, and whether the battery cycle count is displayed (**off** by default).

Edit

You can customize the ratings text with the *Edit* option. By enclosing your text within the html tag used for **Bold** (or removing the tag to unbold the text), you can change the text that will appear in the pop-up battery status screen. For example, the default text "**Excellent**" can be changed to: "Battery is excellent, and will last one day shift."...



4.19 Psion Camera

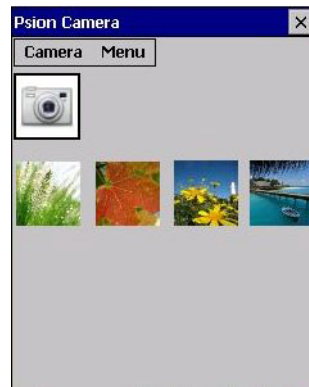
The *Psion Camera* applet allows you to snap photographs and record video footage. It is also a photo and video viewing program.



Important: *The Psion Camera program can only display .bmp or .jpg formats. Photos in other formats will need to be converted on your PC before they are transferred to Omnii.*

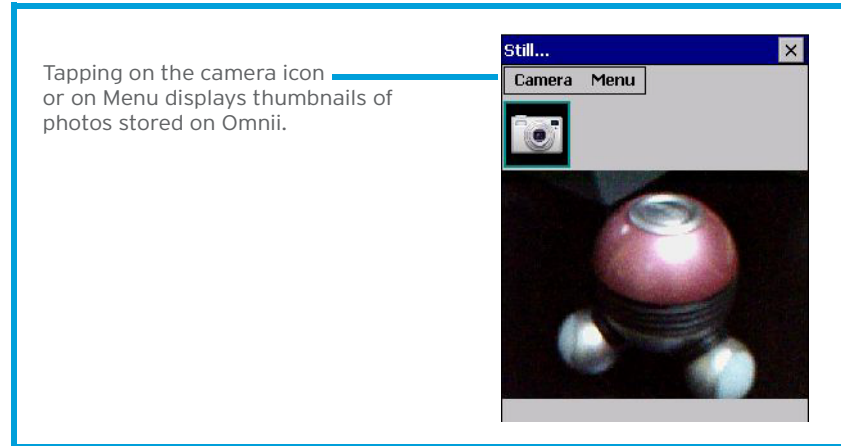
4.19.1 Using the Camera

- Tap on the Desktop icon: **Psion Camera**.



Keep in mind that if there are no pictures stored on your Omnii as yet, you'll only see the *Camera* icon in this screen.

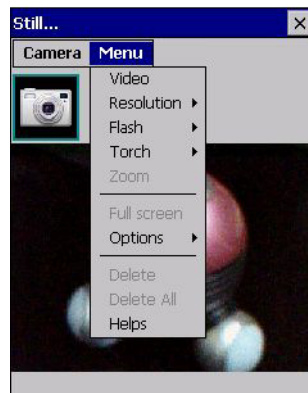
- Tap on the **Camera icon** to activate the camera.
The screen will display the image your camera is pointed at. (The camera is built into the back of Omnii.)



- Frame the image in the Omnii screen. Press **[ENTER]** to snap the photograph.

Photo Menu

When the camera is activated, tapping on *Menu* displays a set of commands to help you modify how your camera operates, the quality of the photos it takes, and so on. You can also use this menu to activate the video recorder rather than the still camera.



Note: 'Video' is a toggle command. When the 'Still' camera is activated, 'Video' is available in this menu. When the video recorder is activated, 'Still' (camera) is available in this menu.

4.19.2 Moving Photos to Omnii

- Connect your device to your PC with ActiveSync.
- Locate the pictures on your PC, and drag photos from their folder to the *Mobile Device* (Omnii). Omnii can be found under *Computer* (*My Computer* on PCs running Windows XP).

4.19.3 Opening a Photo

- To open a photo, tap on Desktop icon: **Psion Camera**. You'll see a thumbnail of your photos.

- Tap on a thumbnail to open the photo.



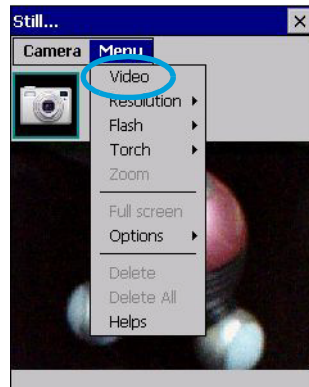
Note: If you've stored your photos on a storage card, you'll need to tap on the storage card icon to display your photos.

4.19.4 Deleting a Photo

- Press and hold the stylus on the thumbnail photo you want to delete to display a pop-up menu. Tap on **Delete**.
- Confirm your choice when prompted.

4.19.5 Using the Video Recorder

- Tap on the **Menu>Video**.



- Press **[ENTER]** to begin recording.
- To end the video, press **[ENTER]** again, or tap on the **Stop** softkey.



Note: When the 'Video' recorder is activated, a Menu is available to tailor the operation of the recorder, the quality of the recording, and so on.

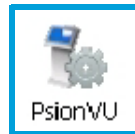
4.20 PsionVU Access

PsionVU Access enables you to customize your computer settings, remove or add shortcuts to the desktop and Control Panel, and limit access to various different components on the computer and the system tray icons for security.

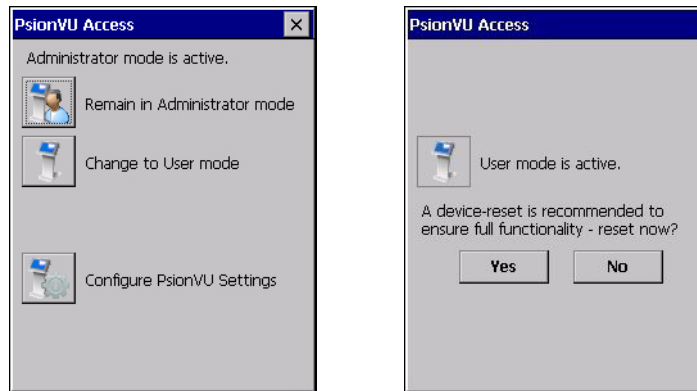


Note: The Desktop theme can be changed from the default Windows Classic Shell to the *PsionVU Shell* either in the **PsionVU Access** settings (see “Other Shell Themes” on page 96) or by tapping on the Desktop icon **PsionVU Shell** (see “The PsionVU Desktop Shell” on page 41).

- In the *Control Panel*, choose the **PsionVU** icon.

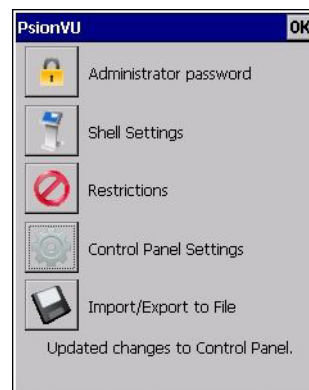


When opening the *PsionVU* application, the *PsionVU Access* dialog will come up that enables you to either proceed to the *PsionVU Settings* menus, or change from your current Access mode to the other (Administrator or User). The computer must be reset following a change, and a confirmation will appear to enable you to continue or dismiss the change.



When opening the *PsionVu Settings* option, the following menu will be available:

Figure 4.4 PsionVU Settings

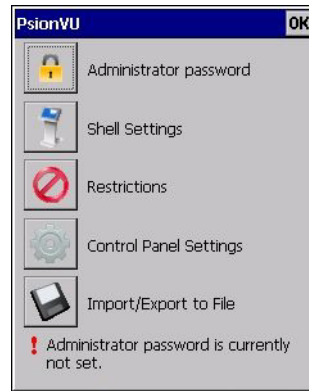


4.20.1 Administrator Password

By setting an Administrator Password, you can limit access to various different components on the computer and the system tray icons for security. The default security setting allows User access to all options, therefore restrictions and settings can be configured without setting a password.

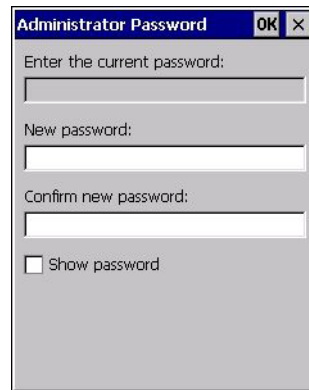


Note: If a setting or restriction is configured without setting an Administrator password, the following message is displayed: "Administrator password is currently not set." Once a password has been set, the message will disappear.



When an administrator password is set, the restricted options are accessed using a key combination. If a password has been set, the user would be prompted for the password.

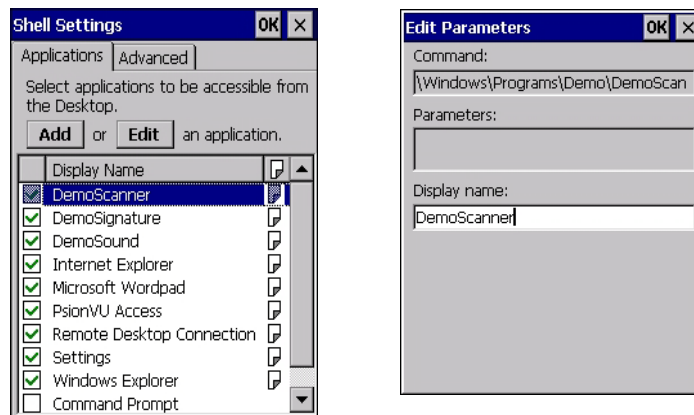
The option *Show Password* changes the displayed password from hidden (***) to readable.



4.20.2 Shell Settings

The Shell Settings application has two menus: *Applications* and *Advanced*.

Applications



The Applications menu lists all the applications installed on the computer, alphabetically. The items checked in this view are shown on the Desktop.

The *Add* and *Edit* buttons allow you to search for and add an application to the list of items in the selection window. You can add a maximum of 18 applications, after which the Add option will be greyed out and the following message is displayed: “!Maximum 18 entries reached.”

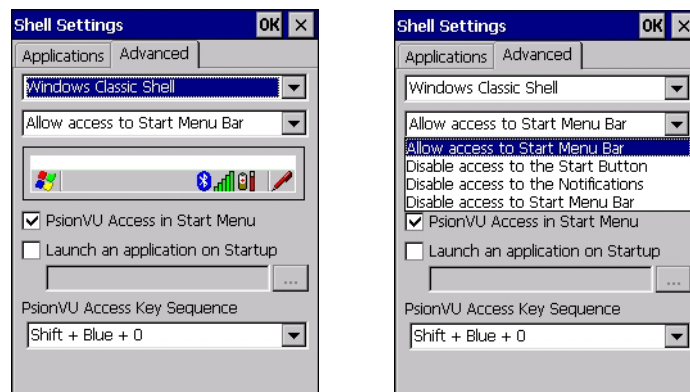
When you select an application and tap on Edit, you will see fields for *Command*, *Parameters*, and *Display Name*.

- **Command:** The *Command* field is prefilled with the path and name of the executable (.exe) or corresponding link (.lnk). If the selected file can't be found (e.g. external memory card has been removed, files have been deleted), a message will be displayed at the bottom of the screen: “These files cannot be found.”
- **Parameters:** The *Parameters* option provides the option of adding extra parameters to the application (for .exe files only, not .lnk). For example, if the Command field is running “pword.exe” (Microsoft WordPad), the Parameters field could specify a document to open.
- **Display name:** This is an editable field which is prefilled with the name of the application.

Advanced

The Applications menu allows you to enable or disable some device functions.

Windows Classic Shell



The following options can be enabled or disabled in the Windows Classic Shell Desktop theme:

- **Start Menu Bar:** If disabled, access to both Start Menu and Notifications are disabled. The Notification tooltips will still display. Any changes made will occur after a device reset.
- **Start Button:** If disabled, access to the Start Button and Notifications are disabled. The Notification tooltips will still display.



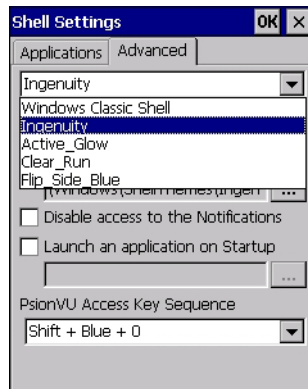
Note: If “Disable access to the Start Button” is selected, but the “PsionVU Access by Key Sequence” remains unchecked, you will see the following status-message “!A Key Sequence is required when the Start Button is disabled.”, the checkbox will be auto-checked, and the focus will be set to the key-sequence selection.

- **Notifications:** If disabled, the Notifications tooltips will still display.
- **PsionVU Access in Start Menu:** When this box is checked, the *PsionVU Access* program will be shown in the *Start Menu>Programs* list.

The following item is not optional:

- **PsionVU Access Key Sequence:** Sets the key sequence to open *PsionVU Access*.

Other Shell Themes



The following options can be enabled or disabled in the PsionVU Shell Desktop themes (shown in the drop-down list as *Ingenuity*, *Active_Glow*, *Clear_Run*, and *Flip_Side_Blue*):



Note: The Desktop theme can be changed from the default Windows Classic Shell to one of the PsionVU themes shown here—but by tapping on the Desktop icon **PsionVU Shell** (see “The PsionVU Desktop Shell” on page 41), the “Ingenuity” theme is automatically loaded. The computer must be reset in order for the shell to change.

- **Use this picture as the background:** You can select a picture as the Desktop background.
- **Notifications:** If disabled, the Notifications tooltips will still display.
- **Launch an application Startup:** A window is displayed listing all of the installed and added applications. Any applications selected will startup after a reboot.

The following item is not optional:

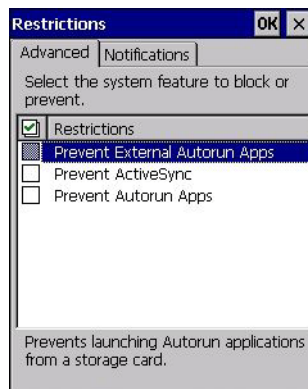
- **PsionVU Access Key Sequence:** Sets the key sequence to open *PsionVU Access*.

4.20.3 Restrictions

This section deals with items that are by default available to users but can be restricted by an administrator.

Advanced

The Advanced menu lists the system features you can restrict or block.



Notifications

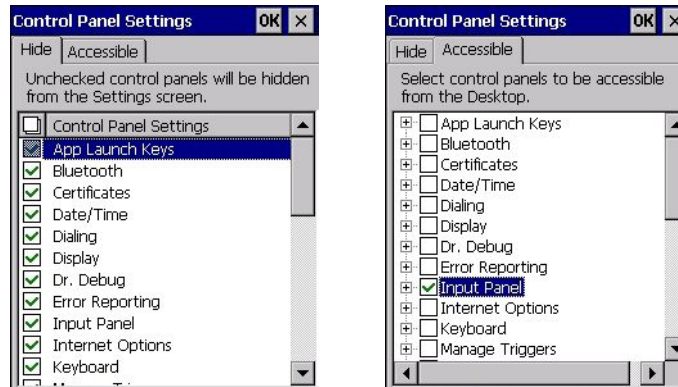
The Notifications menu allows you to block or disable notifications.



4.20.4 Control Panel Settings

In these menus you can set which applets and tabs you want to *Hide* in Control Panel, and which applets and tabs will be *Accessible* as a shortcut icon from the Desktop.

- You have the option of setting the entire applet or specific tabs within the applet as hidden or accessible. Any applet that can't be set is greyed out.



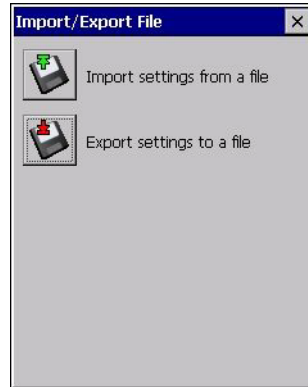
- You can add a maximum of 18 applications, after which the following message is displayed: "Maximum 18 entries reached."

4.20.5 Import/Export to File

This option enables you to *Export* your settings file (.xml), and save it in the location of your choice. In addition, an Administrator has the option to *Import* these settings from one device to multiple devices of the same operating system.



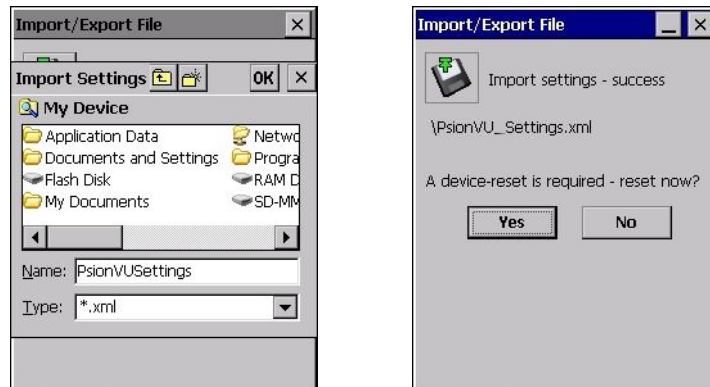
Important: A copy of this file should also be saved in a central repository for all Psion .xml files with a predefined name so that other Psion utilities can locate it.



Tapping on the **Export** button will display a “Save As” Export Settings dialog, with the default name *PsionVU_Settings.xml*, which the Administrator can change even after it has been saved.

The *.xml* file contains all of the PsionVU configured settings, including the *Administrator Password*. When the file is imported to a device, the new password is applied immediately.

- Whether choosing to import or export files, the same file location options under *My Device* will be listed. Following the action, a message stating the success of the operation and the location of the file will be displayed.
- With the exception of the password, changes made to settings will take effect only after a warm reset. If further changes to the configuration are made, they will overwrite the changes caused by the import operation. After importing a file, a dialog will appear to enable you to reset now or later.



4.21 Remote Desktop Connection

Remote Desktop Connection is an Omnii application used to connect to a Windows Terminal Server so that you can run a “session” on the Server machine, using Omnii (Windows Embedded CE device).

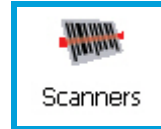
Refer to the following website for step-by-step information about setting up this connection: <http://www.microsoft.com/windowsxp/using/mobility/getstarted/remoteintro.mspx> or contact Psion support services. Locate the office closest to you at: www.pSION.com/service-and-support.htm

4.22 Scanners

The *Scanners* icon in the *Control Panel* provides dialog boxes in which you can tailor barcode scanner configuration and choose the barcodes your scanner will recognize. The parameters are preset with the default settings of the decoded scanner installed in the unit.



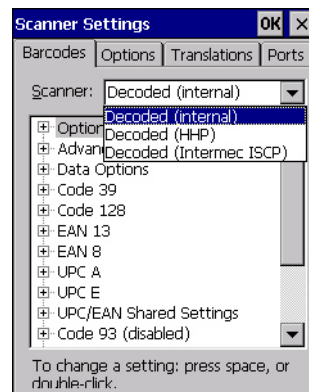
Important: To enable a newly-installed scanner, press and hold down the [FN] key and the [ENTER/Power] key simultaneously for a minimum of three seconds.



You can test the scanner to ensure that it is operating properly by pointing the scanner window at a barcode that your scanner was designed to decode—for example, a 1D UPC barcode or 2D barcode. Press the **SCAN** key or pistol trigger, and check for a valid decode on the hand-held's screen.

For a listing of available scanners and their specifications, please refer to Chapter E: "Omni Specifications".

4.22.1 Barcodes



4.22.1.1 Scanner

The drop-down menu to the right of the *Scanner* option allows you to choose configurations for one of the following scanner types, depending on what is installed in/on your hand-held: *Decoded (internal)*, *Decoded (Intermec ISCP)*, *Imager* and *Non-decoded*.

The symbologies listed in the *Barcodes* tab change to reflect the scanner you choose and the barcodes it supports. Always defer to your barcode scanner's programming manual when in doubt about the availability or settings for any parameter.



Note: Your Omnia comes preconfigured from the factory for internal scanner types. The type of scanner installed can be determined from the **System** icon in the Control Panel, under the *System Properties* tab.



Important: To improve the decode speed and performance, enable (set to 'on') only those codes that are required by the application.

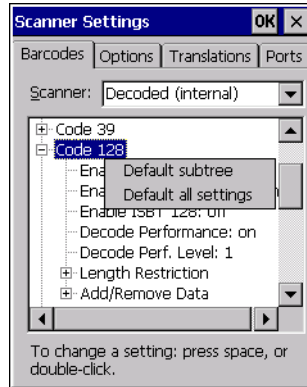
For information on configuring the barcode symbologies, see Appendix C: "Scanner Settings".

Keep in mind that some barcode types are only available when an internal imaging scanner is installed. All internal scanners can be configured using these dialog boxes.

4.22.1.2 Restoring Default Settings

If you want to restore the factory defaults after making changes, the defaults can be applied to a selected parameter, sub-tree of parameters or all scanner parameters.

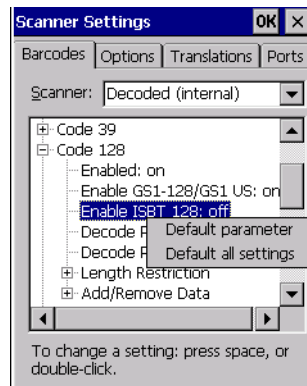
- Press and hold on a symbology (e.g., Code 128) to display a pop-up menu.



- Choose **Default subtree** to reset only the parameters in the symbology you selected, or choose **Default all settings** to reset all scanner parameters to default settings.

To reset a single parameter to its default setting:

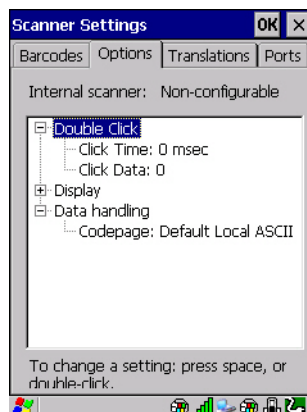
- Press and hold on the parameter you want to reset.



- Choose **Default parameter** to reset the parameter to the default setting.

4.22.2 Options

This tab allows you to tailor the double-click parameters, display, and data handling options associated with your scanner.



4.22.2.1 Double Click Parameters

Click Time (msec)

This parameter controls the maximum gap time (in milliseconds) for a double-click. If the time between the first and second clicks of the scanner trigger is within this time, it is considered a double-click. The allowable range is 0 to 1000. A value of zero disables this feature.

A double-click produces different results depending on whether or not a value is assigned in the “Click Data” parameter. When a value is not assigned for the “Click Data”, double-clicking the scanner trigger overrides the target dot delay set in the “Dot Time” parameter and initiates a normal scan sweep. If a value is assigned for the “Click Data” parameter, double-clicking the scanner trigger inserts the “Click Data” value rather than initiating a scan.

Click Data

This parameter determines which character is sent to the application installed in your Omnii following a double-click. A dialog box appears, asking that you press the key you want to insert. The ASCII/Unicode key value of the keypress is displayed.

Pressing the [ESC] key in this dialog box resets the data to zero.

4.22.2.2 Display Parameters

Scan Result

When this parameter is enabled, the type of barcode and the result of the scan appear on the screen. Note that this information is only displayed after a successful decode and is visible only while the scanner trigger is pressed. When the trigger is released, this information is cleared from the screen.

Scan Indicator

When this parameter is enabled, the laser warning logo appears on the display whenever the scanner is activated.

Scan Result Time (sec)

The value assigned to the *Scan Result Time* parameter determines how long the scan results of a successful scan are displayed on the screen. Time is measured in seconds, and a value of 0 (zero) disables the parameter. When you choose this option, a dialog box appears where you can enter a value.



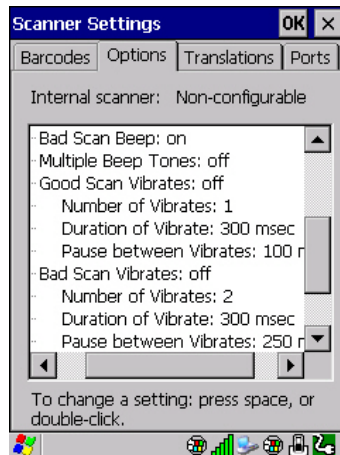
Note: To remove the scan result from the screen before the “Result Time” has expired, point the scanner away from the barcode and press the trigger.

Good Scan Beep and Bad Scan Beep

These parameters determine whether or not Omnii emits an audible scanner ‘beep’ when a good (successful) scan or a bad (unsuccessful) scan is performed. Set these parameters to either **on** to enable the beeper or **off** to disable it.

Multiple Beep Tones

You can set the audible scanner ‘beep’ to emit a series of three beeps instead of one. Set this parameter to **on** to enable the multiple beep tones.

Good Scan Vibrates and Bad Scan Vibrates

These parameters determine whether or not Omnii creates a vibration when a good (successful) scan or a bad (unsuccessful) scan is performed. Set these parameters to **on** to enable the vibration. You can set the *Number* and *Duration* of vibrations, as well as the *Pause* between vibrations. The screen above shows the default settings.

Soft Scan Timeout

This parameter is used by the SDK "Scan" function (soft-scan: starting a scan session via the SDK function, instead of a physical user trigger press). The value assigned to this parameter determines the soft-scan timeout from 1 to 10 sec (default is 3 sec).

Scan Log File

If this parameter is enabled, the input barcode and the modified/translated output barcode are logged in the file `\Flash Disk\ScanLog.txt`. Keep in mind that if *Scan Log File* is enabled, there is a slight performance reduction when performing multiple scans since the log file is written to persistent storage.

4.22.2.3 Data Handling**Codepage**

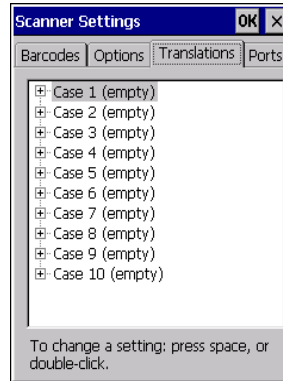
If you are encountering a scan failure because there is an unrecognized language character in the barcode, the Codepage option may correct the problem by allowing the *ISO-8859-1 Latin 1* codepage to be used. The default value is *Default Local ASCII*.



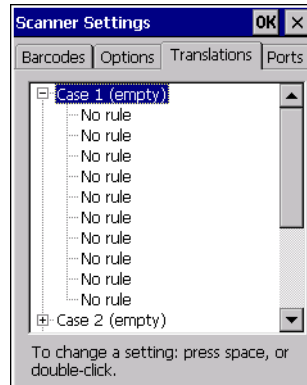
Important: Do not change this parameter from the default setting unless you are certain that it will correct your scan problem.

4.22.3 Translations

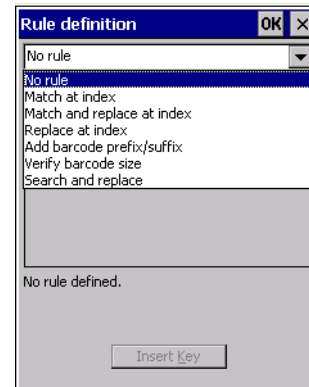
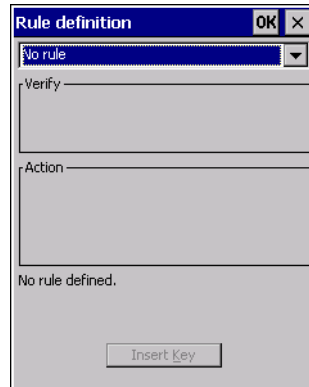
The *Translations* menu allows you to define up to 10 cases, each consisting of up to 10 rules in sequential order. Only one case will be applied to a barcode and a case will only be applied if all rules specified in the case are successful—if a rule within a case fails, the entire case fails.



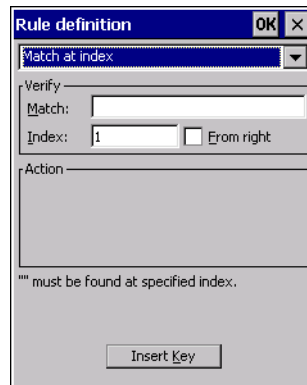
- In the *Translation* menu, tap on the **Case #** to create rules.



- Tap on the **No rule** drop-down menu to display the rules.



When you choose a rule, an associated screen is displayed in which you can define the rule.



4.22.3.1 Case Rules

The case rules are defined as follows:

- **No rule**—ignored.
- **Search and replace**—replaces all instances of the match string. (Note that this rule cannot fail.)
- **Match at index**—matches the match string at a specified index.
- **Match and replace at index**—matches the match string at a specified index and replaces/changes it.
- **Replace at index**—replaces/changes unspecified data in a given range.
- **Add barcode prefix/suffix**—adds a global prefix or suffix.
- **Verify barcode size**—verifies the barcode size. This rule should generally be assigned first, before creating subsequent rules.

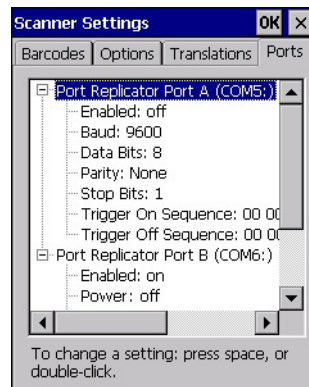


Note: Keep in mind that the effects of previously applied rules must be taken into account when creating subsequent rules. For example, if the barcode size is important, it should be checked before any rules that might change the size are applied.

Translation information about the status of each case/rule is displayed in the scan log file (see “Scan Log File” on page 102) when enabled. This is useful if a case fails, and you are trying to determine why a rule is failing.

4.22.4 Ports

Figure 4.5 Console and Port Replicator Port Settings



While you cannot configure the scanner, you can configure communications with a serial decoded scanner using the options in this tab.

Use these settings to ensure that the communication ports on Omnii match the settings of the serial devices to which they are connected. If the settings do not match exactly, the devices may not function. Note that some devices can auto-detect serial port settings (such as baud rate), and in this case Omnii will dictate the settings. Baud rates often have a direct impact on performance—they should be set as high as possible while still ensuring reliable communication.

4.22.4.1 Port Replicator Port A (COM5) and Port B (COM6)

Port Replicator Port A (COM5) and Port B (COM6) are standard RS-232 DE-9 DTE ports on the Omnii port replicator module, available on some snap modules and cradle types.

Enabled

This parameter must be set to ON in order for Omnii to recognize the device connected to the Port Replicator 9-pin (COM5).

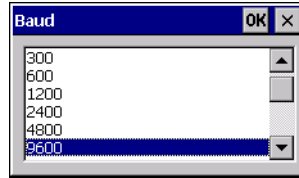
Power (COM6 only)

Pin 9 on Omnii COM6 is reserved for 5V power out and is defaulted to OFF. This parameter must be set to ON to enable power to a Snap Module or Vehicle cradle.

Baud

Double-tapping on this parameter displays a pop-up window in which you can choose an appropriate rate of data transfer.

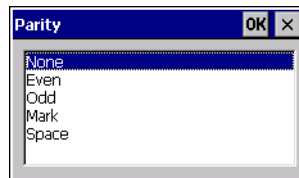
Figure 4.6 Port Baud Rates

**Data Bits**

This parameter determines the number of data bits included in each asynchronous data byte. Most devices use 8-bit data bytes. Double-tapping on this option displays a pop-up window in which you can choose either 7 or 8 data bits.

Parity

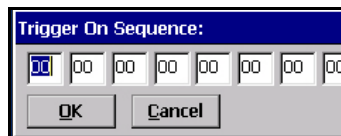
This parameter determines the type of parity checking used on the data going through the port replicator port. Double-tapping on this option displays a pop-up window in which you can choose the appropriate parity.

**Stop Bits**

This parameter specifies the number of stop bits—1, 1.5 or 2—used for asynchronous communication.

Trigger On Sequence And Trigger Off Sequence

If a SICK scanner connected to an Omnii port requires a serial stream of data bytes to trigger the scanner *on* and another to trigger the scanner *off*, the *Trigger On Sequence* and *Trigger Off Sequence* parameters allow you to define these serial streams.



Double-tapping on *Trigger On Sequence* or *Trigger Off Sequence* displays a screen with a hex array of 10 elements.

These parameters work in conjunction with *Manage Triggers* sending on and off data streams to the trigger module you assigned. For example, suppose you launch *Manage Triggers* and choose *Decoded Scanner* as the 'module to trigger'. Next, you assign a 'trigger key'—for this example, . (period). To define the serial stream of data bytes to control the *on* and *off* function of the 'trigger key', enter a hex value in the *Trigger On Sequence* and the *Trigger Off Sequence* fields. When you press the trigger key, the *Trigger On Sequence* is sent and when you release the trigger key, the *Trigger Off Sequence* is sent, turning the trigger key *on* and *off*.

4.23 Storage Manager

The Storage Manager allows you to view information about the storage devices that are present in Omnii, such as SD-MMC flash cards and Compact Flash cards.

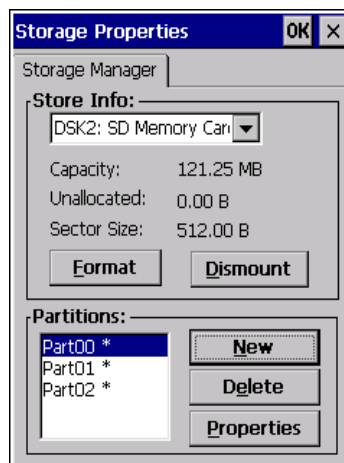


4.23.1 Formatting a Memory Card

Formatting a memory card bulk-erases it. Once a card is erased, partitions may be created in it, similarly to those on a hard drive. Memory-card devices are normally 'mounted' (made available to the system) automatically when they are inserted. They must be dismounted before they can be formatted.

To format an entire memory card:

1. Select **Start> Settings>Control Panel**.
2. In Control Panel, double-click on the **Storage Manager** icon. The Storage Manager menu opens:



1. Select the memory card from the drop-down list.
2. Press the **Dismount** button to dismount the memory card. All partitions on the card will be dismounted.
3. Press the **Format** button to format the memory card.

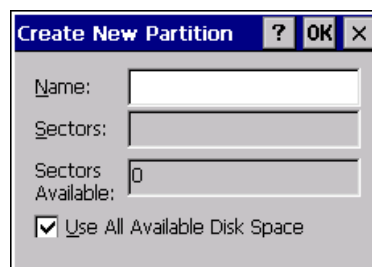
All partitions and information on the card will be erased during the formatting process.

4.23.2 Creating Partitions

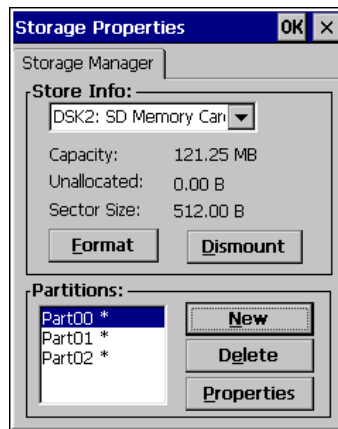
Once the card is formatted, new partitions can be created in it. The default is to create one partition that occupies the whole card, but a card can be divided into more than one partition if desired. Each partition appears as a separate folder in Windows Explorer.

To create new partitions:

1. Press the **New** button next to the *Partitions* list box. The Create New Partition dialog box appears:



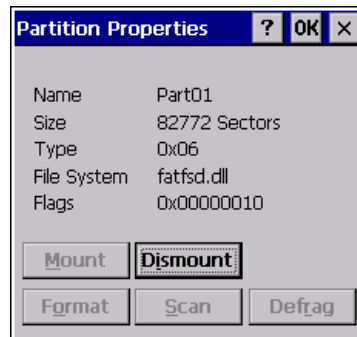
1. Type a name for the partition.
2. If more than one partition is desired, uncheck the *Use All Available Disk Space* checkbox, then specify the desired number of sectors to be used by the partition.
1. Press **OK**. The new partition appears in the *Partitions* list.



The new partition is automatically mounted. This is indicated by an asterisk (*) next to its name in the partition list. Any unallocated space on the card is indicated at the left, and additional partitions can be created in it.

4.23.3 Partition Management

Partitions can be individually dismounted, mounted, deleted, or formatted as well. These and additional tasks are available from the *Partition Properties* dialog:



To dismount a partition:

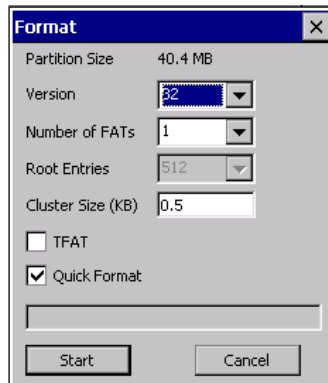
1. Choose the desired partition.
2. Tap the **Properties** button. The *Partition Properties* dialog appears.
3. Tap the **Dismount** button. The partition is dismounted. The asterisk disappears next to its name in the partitions list.

To delete a partition:

1. Select the desired partition.
2. Tap the **Delete** button. A warning dialog appears.
3. Tap the **OK** button. The partition is deleted.

To format a partition:

1. Choose the desired partition.
2. Tap the **Properties** button. The *Partition Properties* dialog appears.
3. Tap the **Dismount** button. The partition is dismounted. The asterisk disappears next to its name in the partitions list.
4. Tap the **Format** button. The *Format* dialog appears:



5. Choose your format options. These options include:
 - Version of file system (FAT-16, for devices holding up to 4 GB; or FAT-32, for devices containing up to 32 GB).
 - Number of FATs (File-Allocation Tables).
 - Number of entries allowed in the root directory.
 - Cluster size (.5 KB to 64 KB).

There are also two checkboxes, which govern:

- Whether to use the transaction-safe FAT file system (TFAT). This file system keeps multiple copies of the file-allocation table, changing one while maintaining another as a backup.
- Whether to perform a quick format. Quick formatting removes all reference to data in the partition without erasing the actual partition. The partition will be treated as empty, and new data will overwrite it.

6. Tap **Start**. The partition is formatted.

To mount a partition:

1. Choose the desired partition.
2. Tap the **Properties** button. The *Partition Properties* dialog appears.
3. Tap the **Mount** button. The partition is mounted. The asterisk appears next to its name in the partitions list.

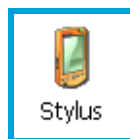
The Partition Properties dialog has buttons for additional functions. Partitions can be defragmented, and their file structure can be scanned.

4.24 Stylus Properties



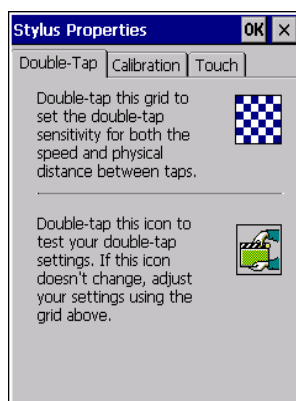
Note: Touchscreen calibration may not be enabled on your unit. If your screen appears to require recalibration, contact your supervisor.

- In the *Control Panel*, choose the **Stylus** icon.



4.24.1 Double-Tap

- In the *Double-Tap* menu, follow the directions to tailor the sensitivity of the stylus when you tap on the touchscreen.



4.24.2 Calibration

Touchscreens rarely require recalibration. However, if your touchscreen has never been calibrated or if you find that the stylus pointer is not accurate when you tap on an item, follow the directions below.

- Choose the **Calibration** tab, and then tap on the **Recalibrate** button.



- Follow the directions in the *Calibration* tab to recalibrate the screen. You will be prompted to save the calibration data.



Note: If you do not receive a prompt to save your data, there could be a problem with your touch-screen hardware. Contact your Psion representative.

4.24.3 Touch

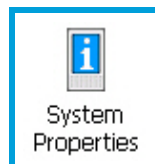
This tab allows you to disable the touchscreen.

- Choose the **Touch** tab. Select the checkbox next to *Disable the touch panel*.

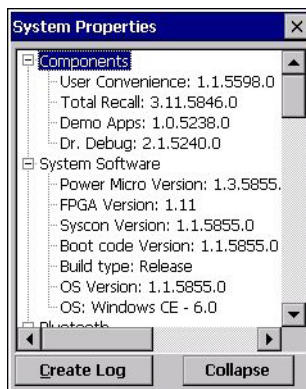
4.25 System Properties

This program identifies the computer's software and hardware components, indicating which components are installed, their identification, version or part numbers, and whether they are enabled or disabled.

- In the *Control Panel*, choose the **System Properties** icon.



- You can create a log (*SystemProperties.xml*) of your current components, which will be placed in the *My Devices* folder in Windows Explorer.

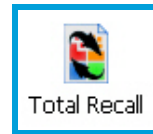


- Instead of expanding each section of items individually, you can also choose to open all the lists at once by choosing the *Expand* button, which will then change to a *Collapse* button to enable you to collapse all the sections as well.

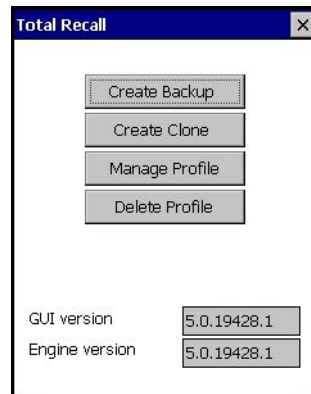
4.26 Total Recall

Total Recall is a Psion utility developed to maintain applications and settings during a cold boot, and clone settings to other devices. This utility is based on a backup and restore concept.

- In the *Control Panel*, choose the **Total Recall** icon.



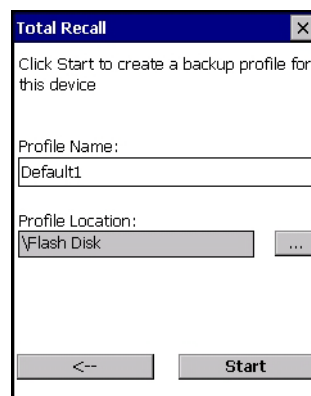
4.26.1 Creating a Backup Profile



In the start up screen, you can choose from four options: *Create Backup*, *Create Clone*, *Manage Profile* and *Delete Profile*.

- Tap on the **Create Profile** button to begin the process.

Create Backup



This dialog box displays the default profile name, the type of restore - *AutoRestore* or *ManualRestore*, and the possible storage destination for the profile file.

- To change the *Profile Name* (optional), tap on the [...] button to the right of the *Profile Location* field.
- In the *Name* field, type a new name. (You may need to move the onscreen keyboard down to make the *Name* field visible.)
- Tap on **OK** to save the new profile name.
- Next, choose the profile **Type** you want to create:
 - ManualRestore** - creates a backup that is manually restored by the operator.
 - AutoRestore** - creates a profile that automatically restores itself following a cold reset or a clean reset.
- Finally, if you want to choose another location for your backup file (optional), tap on the [...] button to the right of the *Profile Location* field.



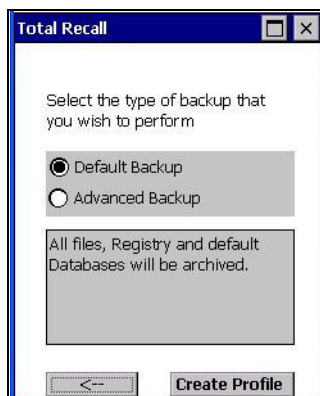
Important: Any profile not stored in persistent memory (flash disk, external usb drive) will be erased during a clean boot, therefore you should store profiles on a persistent drive.

When performing an autorestore, the program only searches for profiles located in the root folder of persistent drives. If you store your profile anywhere else it will not be restored.

When there are multiple autorestore profiles found, only the latest is restored.

- Navigate to the new location, and tap on **OK** to save it.
- Tap on the (Next) button. [-->]

Defining the Type of Backup

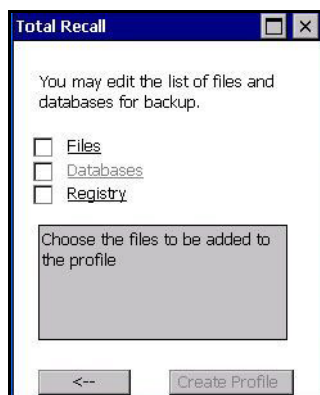


Default Backup

Default Backup is selected so that all installed or copied files, database entries, and the Registry are saved. Choose **Advanced Backup** if you want to tailor your backup.

Advanced Backup

Choosing *Advanced Backup* allows you to define what you would like to include in your backup profile.



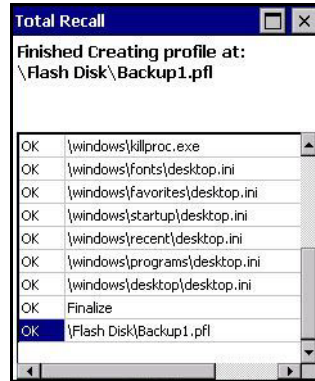
- Tap in the checkbox next to the option(s) listed here to tailor what you want included in the backup.

Creating a Profile

Once you've defined the type of profile you want to create:

- Tap on the **Create Profile** button.

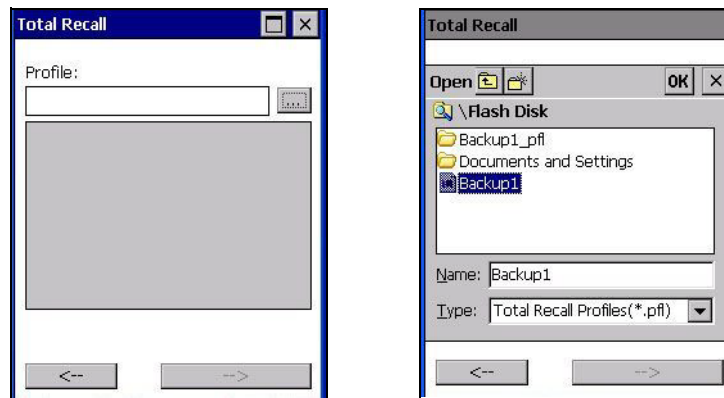
The options you chose to back up appear in your window as the backup progresses. When the backup is complete, the last item in the list indicates the location and name of the backup profile.



4.26.2 Restoring a Profile

To manually restore a profile:

- In the *Total Recall* home screen, tap on **Restore Profile**.
- Tap on the [...] button to the right of the *Profile* field and locate your backup file.

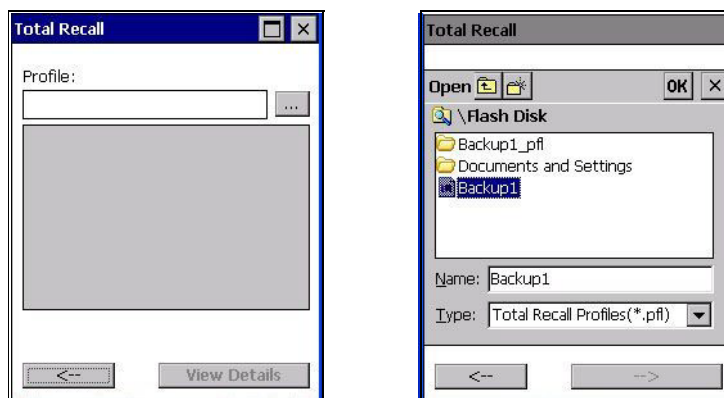


- Tap on **OK**.
- In the *Profile* restore screen, click on the (Next) button. [-->]
- Click on **Restore Profile** to restore the files to your Omnii.

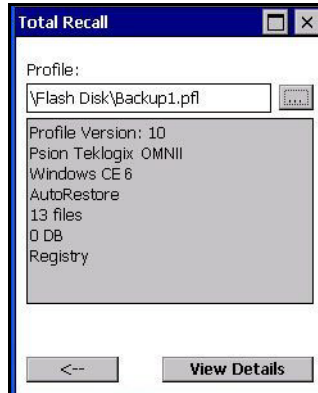
4.26.3 Viewing a Profile

To view a profile:

- In the *Total Recall* home screen, tap on **View Profile**.
- Tap on the [...] button to the right of the *Profile* field, and locate your backup file.



- Tap on **OK**.



- Tap on **View Details** to review your backup files.

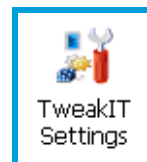
4.26.4 Deleting a Profile

- In the *Total Recall* home screen, tap on **Delete Profile**.
- In the next screen, locate your backup file, and tap on **OK**.

A warning pop-up screen appears asking if you're certain that you want to delete this file.

- Tap on **Yes** to delete the file.

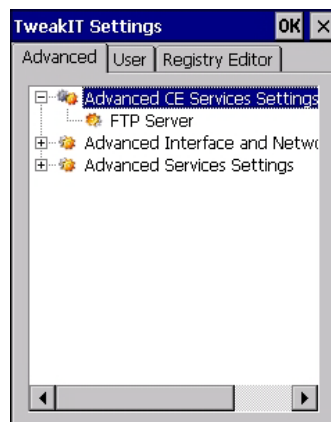
4.27 TweakIt



This utility allows you to 'tweak' or adjust *Advanced* system settings (interface, network, servers, driver, and radio), *User* settings (Internet Explorer settings, font size, and docking port message), and provides a *Registry Editor*.

4.27.1 Advanced

4.27.1.1 Advanced CE Services Settings

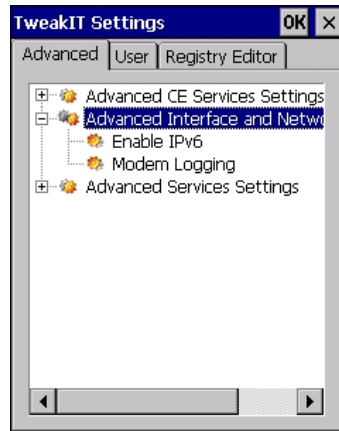


FTP Server

This option is enabled by default to allow file transfers. Keep in mind that data transfer in either direction is restricted to the Temp folder—that is, data are always loaded from the *FTP Server* to the *Temp* folder and from the *Temp* folder to the *FTP Server*.

If this option is disabled, a warm reset must be performed to accept the change.

4.27.1.2 Advanced Interface and Network Settings



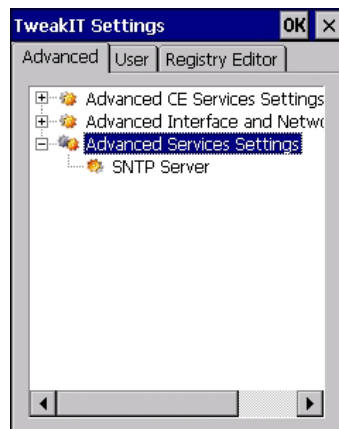
Enable IPv6

This option allows you to enable Internet Protocol specification, version 6, that has been published to enable 128-bit IP addresses (replacing version 4).

Modem Logging

When this option is enabled, Omnii logs AT commands (e.g., dial-out information, password string, etc.) that the administrator can monitor for debugging purposes. Modem commands are stored in: \MdmLog.txt.

4.27.1.3 Advanced Services Settings

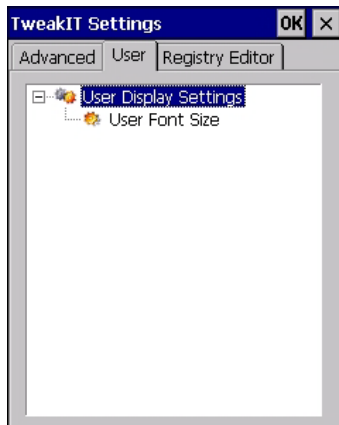


SNTP (Simple Network Time Protocol) Server

The *SNTP Server Name* typed in this dialog box is used to synchronize Omnii time with the server time. A warm reset must be performed once the server name as been entered.

4.27.2 User

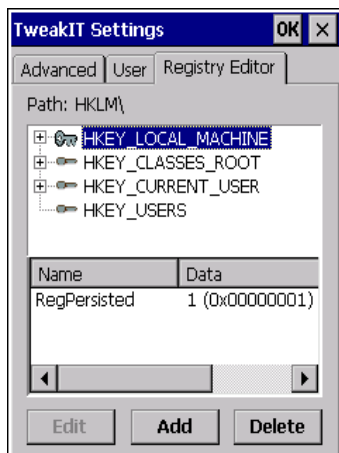
4.27.2.1 User Display Settings



User Font Size

This option allows you to adjust the size of the font used in the Omnii display: *Large*, *Normal*, or *Small*.

4.27.3 TweakIt



This option is reserved for senior administrators who have a strong understanding of registry keys and values.



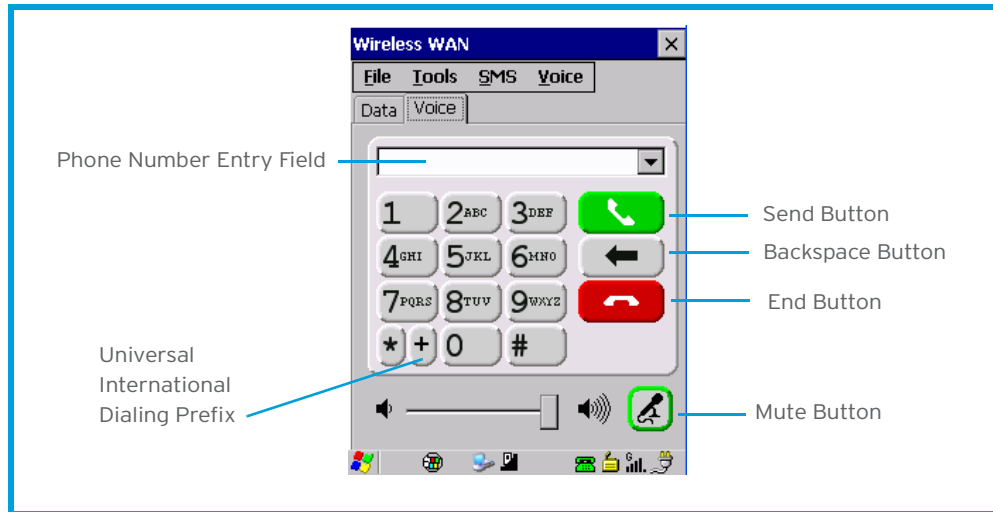
Warning: Careless registry editing can cause irreversible damage to Omnii.

4.28 Voice - Using the Phone Dialer

If the WWAN modem is installed and enabled, the *Phone icon* and the *GSM signal strength icon* will appear automatically on the taskbar.

- Double click on the **Phone icon** to access the phone dialer.
- You can also follow the steps below to access the phone dialer:
- To access the dialer, tap on **Start>Settings>Control Panel**.

- Tap on the **Wireless WAN icon**, and then tap on the **Voice** tab.
- The *Voice* tab displays a phone dialer used to dial phone numbers. The *Voice* menu provides commands which allow you to manage your phone contacts, view your phone history, and so on.



4.28.1 Dialing a Number

To make a phone call, all you need is the recipient's phone number.

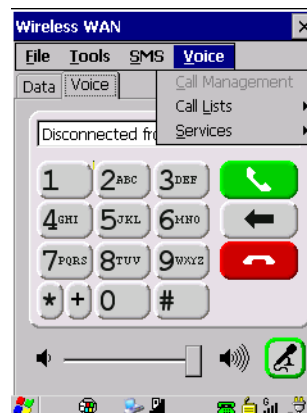
- Type the recipient's phone number in the phone number entry field.
 - **Send button** - tap to dial the number you typed.
 - **Backspace button** - tap to erase characters in the phone number entry field.
 - **End button** - tap to disconnect the phone call.
 - **Mute button** - During a phone call, tap to mute sound transmission. Tap again to restore sound.
 - **+ button** - When making an international call, the + sign can be used as a universal substitute for any international dialing prefix and is guaranteed to work worldwide. The entry sequence must be as follows: **+ country code** followed by **phone number**.

Example: A standard phone number: 011 36 30 275 28466 using the + substitution is typed as follows: +36 30 275 28466

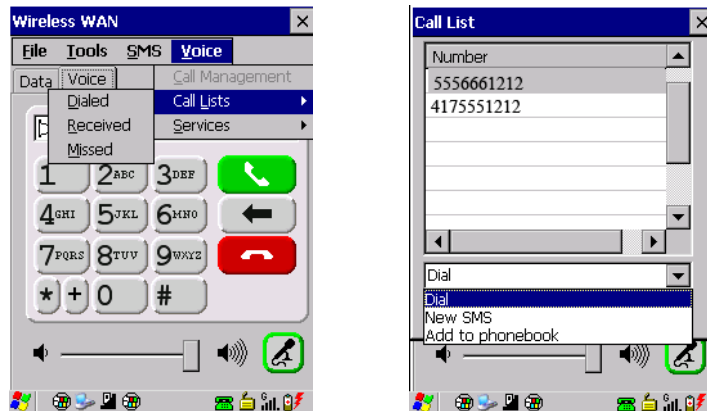
The + symbol replaces the universal dialing prefix 011.

4.28.2 Voice Menu

This menu allows you to manage calls, view your call history, and if required, assign a call forwarding service to your hand-held.



Call Lists



The *Call List* command manages your call history, listing calls you've *Dialed*, *Received* and *Missed*. When you choose one of these commands, a dialog box lists the phone numbers.

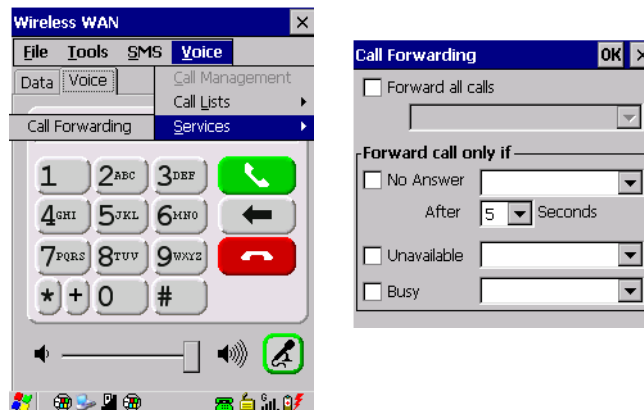
A drop-down menu provides a list of commands you can execute on a phone number in the *Call List*. You can choose to:

- Dial the number,
- Send a New SMS, or
- Add to phonebook to add the highlighted phone number to your phonebook. (Refer to "Phonebook" on page 119 for details additional details about the Phonebook.)

In the *Call List*:

- Highlight the **phone number** with which you want to work.
- Choose a command in the drop-down menu.
- Tap on the **Execute** button to carry out the command.

Services



The *Service* menu offers a *Call Forwarding* option for your hand-held. If you choose this option, it may take a number of seconds for your unit to read the network settings.

To forward all calls:

- Tap in the **checkbox** next to **Forward all calls**, and then type the phone number to which all incoming phone calls will be routed.

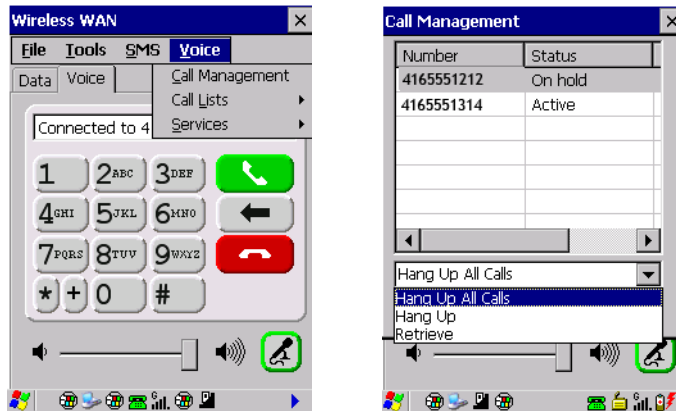
To specify when a call will be forwarded, that is:

- Forward the call only when it is not answered after a specified number of seconds,
- Forward the call when you have identified yourself as 'unavailable', or
- Forward the call when your unit is busy:

- Tap in the appropriate checkbox, and enter the phone number to which the call will be routed.

Call Management

The *Call Management* option only becomes available in the *Voice* menu when at least one phone call is either *On hold* or *Active*. When you choose this command, the currently active phone call is listed in a dialog box.



Using the drop-down menu, you can choose to:

Hang Up All Calls - This option only appears when more than one call is listed.

Hang Up - This option disconnects only the call you've highlighted in the list.

Hold - This option places the call you've highlighted on hold.

Retrieve - This option is only available when a call is on hold, and choosing it retrieves the call you have highlighted from hold.

- In the *Call Management* list, highlight the phone number to which you'd like to apply a command.
- Choose a command from the drop-down menu, and tap on **Execute** to carry out the command on the highlighted phone number.

If you have two active calls on your hand-held, one *On Hold* and one *Active*, you can set up a conference call between yourself and the other callers. To set up a conference call:

- Highlight the phone number that is currently *On Hold*, and choose **Retrieve**. Tap on **Execute**.

Both calls will be listed as *Active* in the *Call Management* list. All calls are now conferenced so that you as well as your callers can speak to one another.

4.28.3 File Menu - Phonebook Management

Tapping on the *File* menu provides access to your *Phonebook*.

Phonebook

The *Phonebook* allows you to store frequently used phone numbers. When no numbers have been added to your phonebook, the only command available to you is *New Entry*.



To add a new phone number to your phonebook:

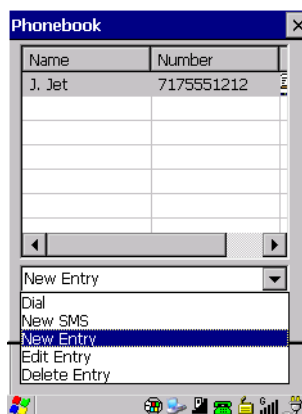
- Choose *New Entry* in the drop-down menu, and tap on **Execute**.



- Type the name corresponding to the phone number you want to add.
- Press **Tab** and type the phone number you want to store.
- Tap in the checkbox next to *Store in SIM* to save the phone number there, or leave this checkbox blank if you prefer not to store the number on the SIM card.
- Tap on the **Execute** button to save the phone number in your *Phonebook*.

Phonebook entries are saved even after you exit Wireless WAN.

Once you've added a phone number to the *Phonebook*, a list of new commands is available in the drop-down menu.



You can choose one of the following:

- **New Entry** to add another phone number,
- **New SMS (Short Message Service)** to send a new SMS,
- **Edit Entry** to change an existing name and/or phone number, or
- **Delete Entry** to erase an existing phone entry.

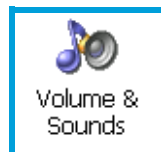
In the *Phonebook*:

- Highlight the entry with which you want to work.
- Choose a command from the drop-down menu, and tap on **Execute** to carry out the command.

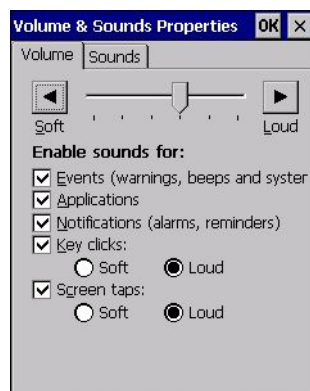
4.29 Volume & Sounds Properties

Omnii supports several audio options, including *Bluetooth*. The beeper is used for the standard sounds: key clicks, screen taps, and scanning. The optional rear speaker can be used for system (Windows) sounds and .wav files. When a rear speaker is absent, those sounds are routed to the front receiver.

- In the *Control Panel*, choose the **Volume & Sounds** icon.



4.29.1 Volume Adjustments



- Slide the volume button to the left to lower the volume or to the right to increase the volume.
- Under the heading *Enable sounds for*, enable the conditions under which you want the hand-held to emit a sound.

4.29.2 Sound Adjustments



This dialog box allows you to assign sounds to identify particular actions. For example, you can choose the sound your hand-held will emit when you close a program and choose another sound for a failed scan, etc.

4.30 Wi-Fi Config

The *Wi-Fi Config* application is used to configure the Omnii 802.11b/g radio for one or more wireless network profiles. A network profile contains settings for SSID (Service Set Identifier) and security options.



Note: In most situations, the configuration of your 802.11 radio will require parameter setting and access keys from a network administrator.

To launch the *Wi-Fi Config* application:

- Tap on **Start>Programs>Wi-Fi Config**.



The *Wi-Fi Config* screen is displayed.

4.30.1 Wi-Fi Config: Status

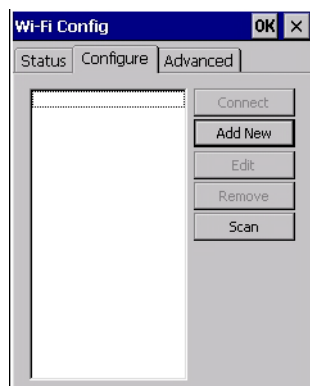
The *Status* tab displays information about the wireless network to which Omnii is configured to connect. When there are no network profiles configured, this tab is not populated.



Disable/Enable Radio: This button toggles between *Disable Radio* and *Enable Radio* depending on whether the radio is turned off or on.

4.30.2 Wi-Fi Config: Configure

- To configure the radio for a wireless network, tap on the **Configure** tab.



Connect: Used to connect to an already existing wireless network configuration.

Add New: Used to create a new wireless network configuration.

Edit: Used to change values in an already existing wireless network configuration.

Remove: Used to delete a wireless network configuration.

Scan: Used to detect and list available wireless networks. You can highlight a network in the list, and tap on *Add New* to activate the network.

There are two methods available when configuring a radio network—you can either scan for an existing network or manually create a network. If you tap on the **Scan** button, a list of networks detected by the radio is displayed. Highlighting one of the listed networks and tapping on the *Add New* button creates a new profile that is completed based on the security capabilities detected by the radio. You may need to add additional information, depending on your network requirements.

If you tap on the **Add New** button rather than the *Scan* button, you can create a network manually.



Important: *The steps below describe how to manually create a network. Keep in mind that this is intended only as an example and may vary from your own network requirements. If, for example, you are using a different type of security for your network, the fields you complete may not match those described here.*

- Enter the **SSID** (Service Set Identifier) for your network.

The screenshot shows a dialog box titled "Configure Profile" with "OK" and "X" buttons in the top right corner. It contains two fields: "SSID" with the text "Production" and "Auth. Mode" with a dropdown menu currently showing "Open".

4.30.2.1 Authentication Mode

Omnii supports several classes of authentication—*Open*, *WEP*, *WPA/WPA2 (Personal PSK, Enterprise, CCKM-WPA, CCKM-WPA2)*, and *802.1x with EAP*. Tapping on the *Auth. Mode* menu displays your authentication options.

The screenshot shows the same "Configure Profile" dialog box, but the "Auth. Mode" dropdown menu is open, displaying a list of options: "Open", "WEP", "802.1X", "WPA-Personal (PSK)", "WPA-Enterprise (EAP)", "WPA2-Personal (PSK)", "WPA2-Enterprise (EAP)", "CCKM-WPA", and "CCKM-WPA2".



Note: *Each Auth. Mode has a unique Configure Profile screen attached to it with fields appropriate to the authorization mode you've chosen.*

Open Authentication

Open authentication does not provide security. When this option is chosen, Omnii will connect to wireless networks which do not use authentication or encryption.

WEP (Wired Equivalent Privacy)

WEP provides static security to prevent others from accidentally accessing your network. If you choose this option, you can specify the type of WEP authentication—*Open* or *Shared*, the WEP security key length—*64 bit* or *128 bit* and the key type—*ASCII* or *Hex*. WEP Key fields are also provided where you can specify a 5 or 13 ASCII character sequence or an equivalent 10 or 26 Hexadecimal digit sequence that matches the active WEP key on the access point.

WPA & WPA2 Personal PSK (Pre-Shared Key)

When PSK is selected, either *WPA Personal PSK* or *WPA2 Personal PSK*—a shared key must be configured on both the access point and the hand-held computer. One of the following can be chosen from the *Encryption* drop-down menu: *TKIP*, *AES* or *TKIP+AES*.

802.1X, WPA & WPA2 Enterprise, CCKM-WPA & CCKM-WPA2

These authentication modes use *802.1X* with *EAP* authentication. When *802.1X* is selected, Omnii uses *WEP* encryption with automatic (as opposed to static) keying. For the others, the user may choose *TKIP*, *AES* or *TKIP+AES* encryption.

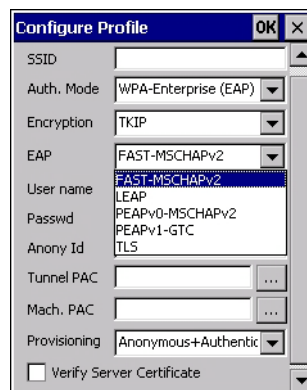
4.30.2.2 Encryption

The *Encryption* menu allows you to choose the type of encryption that will be used to protect transmitted data. Choose an *Encryption* method valid for your network from the drop-down menu. Only the *Encryption* options that are compatible with the type of *Auth. Mode* you've chosen will be listed. In fact, in some cases, this menu will not be available at all.



4.30.2.3 EAP

This menu allows you to choose the *EAP* (Extensible Authentication Protocol) type used for 802.1x authentication to an access point.



The following EAP types are supported by *Wi-Fi Config*:

- **TLS:** Provides strong security via the use of client certificates for user authentication.

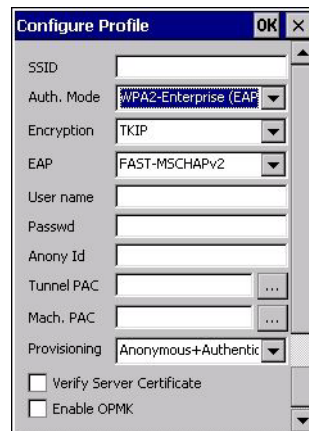
- **PEAPv0-MSCHAPv2:** Provides secure user authentication by using a TLS tunnel to encrypt EAP traffic. *MSCHAPv2* is used as the inner authentication method. This is appropriate for use against Windows Active Directory and domains.
- **PEAPv1-GTC:** PEAP authentication using GTC as the inner method which utilizes one time passwords (OTPs) for authentication against OTP data bases such as SecureID.
- **LEAP:** Is an authentication method for use with Cisco WLAN access points. LEAP does not require the use of server or client certificates. LEAP supports Windows Active Directory and domains but requires the use of strong passwords to avoid vulnerability to off-line dictionary attacks.
- **FAST-MSCHAPv2:** Is a successor to LEAP and does not require strong passwords to protect against off-line dictionary attacks. Like LEAP, EAP-FAST does not require the use of server or client certificates and supports Windows Active Directory and domains.
- Complete the fields in the **Configure Profile** screen. If you're uncertain about some of the options, your system administrator will be able to provide the correct information for your wireless network.
- Once you've completed the necessary fields, tap on **OK**.

4.30.2.4 Verify Server Certificate

When the *Verify Server Certificate* box is checked, Omnii will verify the certificate provided by the authentication server during the authentication process. This requires that an appropriate certificate be manually installed on Omnii for the verification.

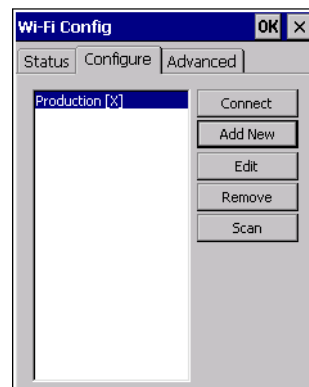
4.30.2.5 Enable OPMK

When used with compatible wireless infrastructure, Opportunistic Key Caching (OPMK) reduces the number of full authentications required when roaming. Only available with WPA2-Enterprise (EAP) authentication mode.



4.30.2.6 Connecting the Wireless Network

Your configured network is listed in the *Configure* tab. An [X] next to a network indicates that this is the network to which Omnii will connect.



- Tap on the **Connect** button to activate your network.
The *Status* tab is displayed. The *Status field* displays *ASSOCIATING* while the 802.11b/g radio attempts to connect to the network. Once the association is complete, the *Status* tab is populated with the appropriate information about your network.



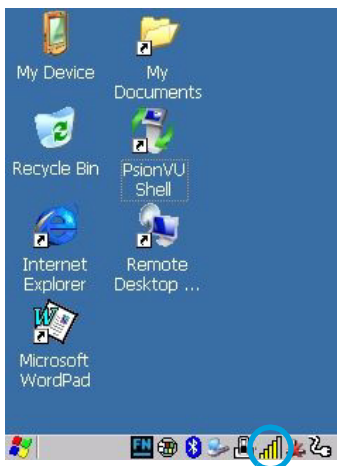
4.30.3 Configuring TCP/IP

If your network is not using a DHCP server, you will need to assign an IP address.

4.30.3.1 IP Address

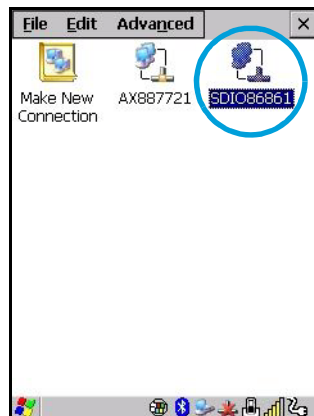
To assign an *IP address* for your Omnii:

- Tap on the **radio icon** in the taskbar,



or

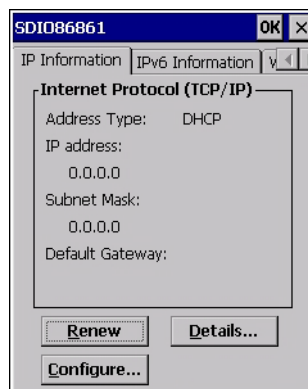
Tap on **Start>Settings>Network and Dial-up Connections**. Tap on the **radio icon** for which you want to assign an IP address—in the sample screen below, the icon is labelled *SDIO86861*.



The *Wireless Statistics* screen is displayed.

- Tap on the **IP Information** tab.

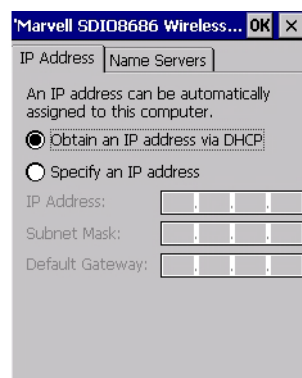
Figure 4.7 SDIO86861 IP Information



Note: When DHCP is enabled, tapping the 'Renew' button forces Omnii to renew or find a new IP address. This is useful if, for example, you are out of communication range for a longer period of time and your hand-held is dropped from the network.

To define a static IP address:

- Tap on the **Configure** button.



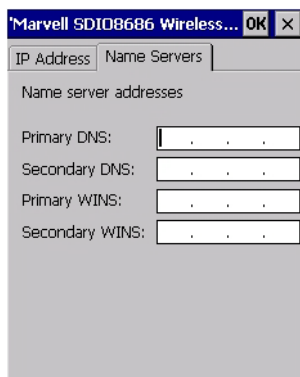
- Tap on the radio button next to **Specify an IP address** to select it.
- Type an **IP**, **Subnet Mask** and **Default Gateway** address in the appropriate fields. Press **[ENTER]** to save your information.

4.30.3.2 Name Server



Note: If DHCP is enabled, name server addresses are assigned automatically.

- In the *SDIO86861 IP Information* tab (see Figure 4.7), tap on the **Configure** button.
- Tap on the **Name Servers** tab.



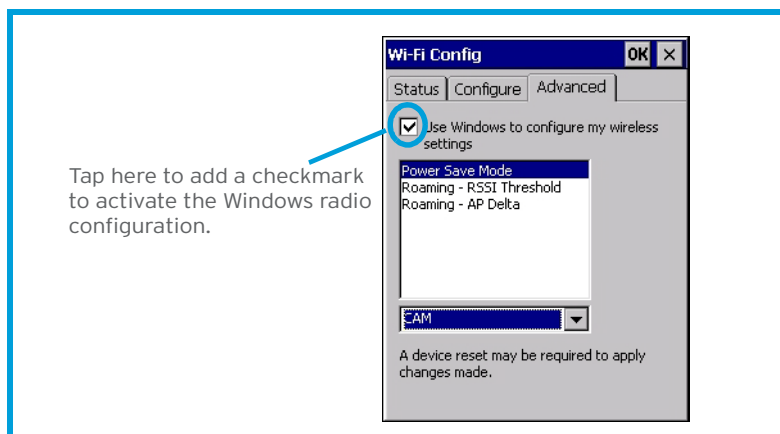
The DNS and WINS fields in the *Name Servers* tab allow you to specify additional WINS and DNS resolvers. The format for these fields is ###.###.###.###.

4.30.4 Wi-Fi Config: Advanced

Use Windows to configure my wireless settings

In the *Advanced* tab you can set Windows to configure the radio, using *Wireless Zero Config*.

- Tap on the checkbox to the left of **Use Windows to configure my wireless settings** to enable this option.



Power Save Mode

This allows you to set the 802.11 power saving mode of the radio to: *CAM* (continuous access—always on) (recommended); or *MAX_PSP* (maximum power saving mode).

Roaming - RSSI Threshold

This sets the RSSI threshold value, below which the radio will start scanning for new access points when roaming. Values range from *-55* to *-90 dBm*.

Roaming - AP Delta

This sets how much greater (in dBm) the RSSI of a new access point must be than the RSSI of the currently associated access point in order for the hand-held to initiate a roam. Values range from *5* to *30 dBm*.

Concluding the Wi-Fi Configuration

If you've made changes in the Advanced menus, you will need to warm reset your Omnii.

- Choose **Start>Shutdown>Warm Reset**.
- A dialog box is displayed letting you know that you will lose all unsaved data. Tap on **OK**.

Once the reset is complete, if you checked the box next to **Use Windows to configure my wireless settings**, the *Wireless Zero Config* screen is displayed on the hand-held. Refer to Appendix G: "Wireless Zero Config Settings" for details.

4.30.5 Monitoring the Network Connection

The radio signal icon in the taskbar indicates the strength of the communication link with an 802.11 access point.

To access the radio signal icon:

- Tap on the radio icon in the taskbar to display the wireless statistics dialog box.

To access the radio signal icon using the keyboard:

- Press the [Windows] key to display the *Start Menu*.
- Highlight **Shortcuts** and then choose **System Tray** from the sub-menu.
- Use the [LEFT] and [RIGHT] arrow keys to highlight the **radio signal** icon in the taskbar.
- Press [ENTER] to display the *Wireless Statistics* dialog box.



Note: Moving in and out of the radio coverage area can have varying effects on a network session. At times, you may need to renew your connection by logging in again.

