

PUMP MOTORS

**JET PUMP MOTORS – NEMA 56 MOTORS
SINGLE-PHASE**

Threaded – With Base – ODP A-71
 Threaded – Less Base – ODP A-72
 Keyed – C-Face Less Base – ODP A-72
 Threaded – with base – TEFC A-72
 Threaded – Less Base – TEFC A-73
 Keyed – C-Face With Base – TEFC A-73
 Keyed – C-Face Less Base – TEFC A-73

THREE-PHASE

Threaded – With Base – ODP A-74
 Threaded – Less Base – ODP A-75
 Keyed – C-Face Less Base – ODP A-75
 Threaded – With Base – TEFC A-75
 Threaded – Less Base – TEFC A-76
 Keyed – C-Face Less Base – TEFC A-76

**CLOSE COUPLE PUMP – INTEGRALS
MOTORS – SINGLE-PHASE**

“JM” Type – TEFC – Standard Efficiency A-78
 “JP” Type – TEFC – Standard Efficiency A-78

**THREE-PHASE – ODP –
STANDARD EFFICIENCY**

“JM” Type – ODP – Standard Efficiency A-80
 “JP” Type – ODP – Standard Efficiency A-81
 “JM” Type – ODP – Standard Efficiency – Vertical Motors A-82
 “JP” Type – ODP – Standard Efficiency – Vertical Motors A-82

THREE-PHASE – ODP – HIGH – EFFICIENCY

“JM” Type – ODP – High Efficiency A-84
 “JP” Type – ODP – High Efficiency A-85
 “JM” Type – ODP – High Efficiency – Vertical Motors A-86
 “JP” Type – ODP – High Efficiency – Vertical Motors A-86

**CLOSE COUPLE PUMP – INTEGRALS
MOTORS – THREE-PHASE MOTORS – TEFC – STANDARD
EFFICIENCY**

“JM” Type – TEFC – Standard Efficiency A-88
 “JP” Type – TEFC – Standard Efficiency A-89–A-90

THREE-PHASE MOTORS – TEFC –HIGH EFFICIENCY

“JM” Type – TEFC – High Efficiency A-92
 “JP” Type – TEFC – High Efficiency A-93

VERTICAL HOLLOW SHAFT – WPI – THREE-PHASE

“TP” Type – High Efficiency A-94

P-BASE MOTORS – TEFC – THREE-PHASE

Standard Efficiency A-96–A-97
 High Efficiency A-97–A-98

OIL WELL PUMPING – ODP & TEFC – THREE-PHASE

High Slip – NEMA Design ‘D’ – ODP A-100
 High Slip – NEMA Design ‘D’ – TEFC A-100
 High Slip – NEMA Design ‘D’ – Triple Rated – TEFC A-101

POOL & SPA MOTORS – ODP – SINGLE-PHASE

C-Face – ODP – Start Capacitor A-103
 Square Flange – ODP – Start Capacitor A-103
 Cross Reference A-104

PUMP
MOTORS



Pump Motors Jet Pump



ODP

SINGLE PHASE

These versatile motors have the torque and durability for the toughest commercial applications, yet are also economical choices for residential applications. The motors are available with or without base and in Form J or C configurations.

APPLICATIONS

- Commercial and Industrial pumps
- Residential pumps
(Jacuzzis, pools, hot tubs)
- Jet Pump motor system
- Hydraulic pumps

OPTIONAL FEATURES

- 4 pole
- Class "F" insulation
- Special voltages
- Drip cover
- Rotation: CW (viewed from shaft end)
- Other mounting configurations

STANDARD FEATURES

- Single-phase, 2 pole, 60Hz
- Voltage: 115/208-230V
- Squirrel cage rotor
- Start capacitor
- Sealed ball bearings (drive end)
- Fan cooled (internally)
- Service factor according to NEMA standard MG 1-18.329
- Insulation class 'B' (130°C)
- Automatic Thermal Overload (ATO)
- Continuous duty (S1), 40°C ambient
- Standard: NEMA-MG 1-18.326
- Stainless steel shaft end
- Color: Munsell N1 (Black)
- Counter Clock-wise, viewed from shaft end

HIGHLIGHTS

- Single and two-speed available
- Space Heaters
- Multiple endbell drains
- External and Internal Epoxy Paint
- External Slinger (Umbrella Seal)

All motors are tested according to IEEE 12 Std. – Method 'B' or C390 CSA.



THREADED – WITH BASE – ODP SINGLE-PHASE

| HP | RPM | NEMA Frame | Catalog Number | List Price | Multi. Sym. | Approx. Shipp. Weight Lbs. | FL Amps 460 | FL Eff % | "C" Dimension (in.) | Voltage | NOTES |
|-------|------|------------|-----------------|------------|-------------|----------------------------|-------------|----------|---------------------|--------------|-------|
| 1/3 | 3600 | 56J | .33360S1BJPR56J | 254 | P1B | 21 | 1.75 | 3.50 | 10.732 | 115/208-230V | \$ |
| 1/2 | 3600 | 56J | .50360S1BJPR56J | 258 | P1B | 24 | 1.60 | 4.70 | 11.126 | 115/208-230V | \$ |
| 3/4 | 3600 | 56J | .75360S1BJPR56J | 296 | P1B | 32 | 1.50 | 5.70 | 11.913 | 115/208-230V | \$ |
| 1 | 3600 | 56J | 001360S1BJPR56J | 334 | P1B | 36 | 1.40 | 6.10 | 12.031 | 115/208-230V | \$ |
| 1 1/2 | 3600 | 56J | 001560S1BJPR56J | 382 | P1B | 40 | 1.30 | 8.50 | 13.212 | 115/208-230V | \$ |
| 2 | 3600 | 56HJ | 002360S1BJPR56J | 438 | P1B | 48 | 1.20 | 10.8 | 14.000 | 115/208-230V | \$ |
| 3 | 3600 | 56HJ | 003360S1DJPR56J | 499 | P1B | 53 | 1.15 | 13.8 | 14.787 | 230V | \$ |

- ELECTRICAL FEATURES ON PAGE B-29.
- MECHANICAL FEATURES ON PAGE B-84.

\$ = Automatic Thermal Overload

JET PUMP MOTORS



THREADED – LESS BASE – ODP SINGLE-PHASE

| HP | RPM | NEMA Frame | Catalog Number | List Price | Multi. Sym. | Approx. Shipp. Weight Lbs | Service Factor | FL Amps 230V | "C" Dimension (in.) | Voltage | Notes |
|-------|------|------------|-----------------|------------|-------------|---------------------------|----------------|--------------|---------------------|--------------|-------|
| 1/2 | 3600 | 56J | .5036OS1BJPR56J | 258 | P1B | 24 | 1.60 | 4.70 | 11.126 | 115/208-230V | § |
| 3/4 | 3600 | 56J | .7536OS1BJPR56J | 296 | P1B | 32 | 1.50 | 5.70 | 11.913 | 115/208-230V | § |
| 1 | 3600 | 56J | 00136OS1BJPR56J | 334 | P1B | 36 | 1.40 | 6.10 | 12.031 | 115/208-230V | § |
| 1 1/2 | 3600 | 56J | 00156OS1BJPR56J | 382 | P1B | 40 | 1.30 | 8.50 | 13.212 | 115/208-230V | § |
| 2 | 3600 | 56HJ | 00236OS1BJPR56J | 438 | P1B | 48 | 1.20 | 10.8 | 14.000 | 115/208-230V | § |
| 3 | 3600 | 56HJ | 00336OS1DJPR56J | 499 | P1B | 53 | 1.15 | 13.8 | 14.787 | 230V | § |

• ELECTRICAL FEATURES ON PAGE B-29. • MECHANICAL FEATURES ON PAGE B-84.



KEYED – 'C' FACE LESS BASE – ODP SINGLE-PHASE

| HP | RPM | NEMA Frame | Catalog Number | List Price | Multi. Sym. | Approx. Shipp. Weight Lbs. | FL Amps 460 | FL Eff % | "C" Dimension (in.) | Voltage | NOTES |
|-------|------|------------|-----------------|------------|-------------|----------------------------|-------------|----------|---------------------|--------------|-------|
| 1/3 | 3600 | 56C | .3336OS1BJPR56C | 237 | P1A | 21 | 1.75 | 3.50 | 10.232 | 115/208-230V | § |
| 1/2 | 3600 | 56C | .5036OS1BJPR56C | 255 | P1A | 24 | 1.60 | 4.70 | 10.826 | 115/208-230V | § |
| 3/4 | 3600 | 56C | .7536OS1BJPR56C | 297 | P1A | 32 | 1.50 | 5.70 | 11.413 | 115/208-230V | § |
| 1 | 3600 | 56C | 00136OS1BJPR56C | 317 | P1A | 36 | 1.40 | 6.10 | 11.531 | 115/208-230V | § |
| 1 1/2 | 3600 | 56C | 00156OS1BJPR56C | 338 | P1A | 40 | 1.30 | 8.50 | 12.712 | 115/208-230V | § |
| 2 | 3600 | 56HC | 00236OS1BJPR56C | 424 | P1A | 48 | 1.20 | 10.8 | 13.500 | 115/208-230V | § |
| 3 | 3600 | 56HC | 00336OS1DJPR56C | 482 | P1A | 53 | 1.15 | 13.8 | 14.287 | 230V | § |

• ELECTRICAL FEATURES ON PAGE B-29. • MECHANICAL FEATURES ON PAGE B-84.

THREADED – WITH BASE – TEFC SINGLE-PHASE

| HP | RPM | NEMA Frame | Catalog Number | List Price | Multi. Sym. | Approx. Shipp. Weight Lbs. | FL Amps 460 | FL Eff % | "C" Dimension (in.) | Voltage | NOTES |
|-------|------|------------|----------------|------------|-------------|----------------------------|-------------|----------|---------------------|--------------|-------|
| 1/3 | 3600 | 56J | .3336ES1BJP56J | 282 | P1B | 36 | 1.15 | 2.80 | 11.996 | 115/208-230V | § |
| 1/2 | 3600 | 56J | .5036ES1BJP56J | 300 | P1B | 40 | 1.15 | 3.80 | 11.996 | 115/208-230V | § |
| 3/4 | 3600 | 56J | .7536ES1BJP56J | 330 | P1B | 41 | 1.15 | 5.30 | 11.996 | 115/208-230V | § |
| 1 | 3600 | 56J | 00136ES1BJP56J | 374 | P1B | 46 | 1.15 | 6.30 | 13.150 | 115/208-230V | § |
| 1 1/2 | 3600 | 56J | 00156ES1BJP56J | 425 | P1B | 56 | 1.15 | 8.50 | 13.150 | 115/208-230V | § |
| 2 | 3600 | 56HJ | 00236ES1BJP56J | 486 | P1B | 65 | 1.15 | 10.5 | 14.330 | 115/208-230V | § |
| 3 | 3600 | 56HJ | 00336ES1DJP56J | 557 | P1B | 78 | 1.00 | 13.5 | 14.724 | 230V | § |

• ELECTRICAL FEATURES ON PAGE B-30. • MECHANICAL FEATURES ON PAGE B-86.

§ = Automatic Thermal Overload

PUMP
MOTORS

THREADED – LESS BASE – TEFC SINGLE-PHASE

| HP | RPM | NEMA Frame | Catalog Number | List Price | Multi. Sym. | Approx. Shipp. Weight Lbs. | FL Amps 460 | FL Eff % | “C” Dimension (in.) | Voltage | NOTES |
|-------|------|------------|-----------------|------------|-------------|----------------------------|-------------|----------|---------------------|--------------|-------|
| 1/3 | 3600 | 56J | .3336ES1BJPR56J | 296 | P1B | 36 | 1.15 | 2.80 | 11.996 | 115/208-230V | § |
| 1/2 | 3600 | 56J | .5036ES1BJPR56J | 305 | P1B | 40 | 1.15 | 3.80 | 11.996 | 115/208-230V | § |
| 3/4 | 3600 | 56J | .7536ES1BJPR56J | 336 | P1B | 41 | 1.15 | 5.30 | 11.996 | 115/208-230V | § |
| 1 | 3600 | 56J | 00136ES1BJPR56J | 386 | P1B | 46 | 1.15 | 6.30 | 13.150 | 115/208-230V | § |
| 1 1/2 | 3600 | 56J | 00156ES1BJPR56J | 438 | P1B | 56 | 1.15 | 8.50 | 13.150 | 115/208-230V | § |
| 2 | 3600 | 56HJ | 00236ES1BJPR56J | 498 | P1B | 65 | 1.15 | 10.5 | 14.330 | 115/208-230V | § |
| 3 | 3600 | 56HJ | 00336ES1DJPR56J | 573 | P1B | 78 | 1.00 | 13.5 | 14.724 | 230V | § |

• ELECTRICAL FEATURES ON PAGE B-30. • MECHANICAL FEATURES ON PAGE B-86.

KEYED – ‘C’ FACE WITH BASE – TEFC SINGLE-PHASE

| HP | RPM | NEMA Frame | Catalog Number | List Price | Multi. Sym. | Approx. Shipp. Weight Lbs. | FL Amps 460 | FL Eff % | “C” Dimension (in.) | Voltage | NOTES |
|-------|------|------------|-----------------|------------|-------------|----------------------------|-------------|----------|---------------------|--------------|-------|
| 1/3 | 3600 | 56C | .3336ES1BJP56C | 263 | P1A | 36 | 1.15 | 2.80 | 11.496 | 115/208-230V | § |
| 1/2 | 3600 | 56C | .5036ES1BJP56C | 284 | P1A | 40 | 1.15 | 3.80 | 11.496 | 115/208-230V | § |
| 3/4 | 3600 | 56C | .7536ES1BJP56C | 320 | P1A | 41 | 1.15 | 5.30 | 11.496 | 115/208-230V | § |
| 1 | 3600 | 56C | 00136ES1BJP56C | 344 | P1A | 46 | 1.15 | 6.30 | 12.677 | 115/208-230V | § |
| 1 1/2 | 3600 | 56C | 00156ES1BJP56C | 412 | P1A | 56 | 1.15 | 8.50 | 12.677 | 115/208-230V | § |
| 2 | 3600 | 56HC | 00236ES1BJP56C | 487 | P1A | 65 | 1.15 | 10.5 | 13.858 | 115/208-230V | § |
| 3 | 3600 | 56HC | 00336ES1DJP56C* | 548 | P1A | 78 | 1.00 | 13.5 | 14.252 | 230V | § |

• ELECTRICAL FEATURES ON PAGE B-30. • MECHANICAL FEATURES ON PAGE B-86.

KEYED – ‘C’ FACE LESS BASE – TEFC SINGLE-PHASE

| HP | RPM | NEMA Frame | Catalog Number | List Price | Multi. Sym. | Approx. Shipp. Weight Lbs. | FL Amps 460 | FL Eff % | “C” Dimension (in.) | Voltage | NOTES |
|-------|------|------------|------------------|------------|-------------|----------------------------|-------------|----------|---------------------|--------------|-------|
| 1/3 | 3600 | 56C | .3336ES1BJPR56C | 282 | P1A | 36 | 1.15 | 2.80 | 11.496 | 115/208-230V | § |
| 1/2 | 3600 | 56C | .5036ES1BJPR56C | 299 | P1A | 40 | 1.15 | 3.80 | 11.496 | 115/208-230V | § |
| 3/4 | 3600 | 56C | .7536ES1BJPR56C | 341 | P1A | 41 | 1.15 | 5.30 | 11.496 | 115/208-230V | § |
| 1 | 3600 | 56C | 00136ES1BJPR56C | 357 | P1A | 46 | 1.15 | 6.30 | 12.677 | 115/208-230V | § |
| 1 1/2 | 3600 | 56C | 00156ES1BJPR56C | 432 | P1A | 56 | 1.15 | 8.50 | 12.677 | 115/208-230V | § |
| 2 | 3600 | 56HC | 00236ES1BJPR56C | 494 | P1A | 65 | 1.15 | 10.5 | 13.858 | 115/208-230V | § |
| 3 | 3600 | 56HC | 00336ES1DJPR56C* | 555 | P1A | 78 | 1.00 | 13.5 | 14.252 | 230V | § |

• ELECTRICAL FEATURES ON PAGE B-30. • MECHANICAL FEATURES ON PAGE B-86.

§ = Automatic Thermal Overload

THREE PHASE

These versatile motors have the torque and durability for the toughest commercial applications, yet are also economical choices for residential applications. The motors are available with or without base and in Form J or C configurations.



ODP



TEFC

APPLICATIONS

- Commercial and Industrial pumps
- Residential pumps (Jacuzzis, pools, hot tubs)
- Jet pump motor system
- Hydraulic pumps

OPTIONAL FEATURES

- 4 Pole
- Class 'F' insulation
- Special voltages
- Drip cover
- Automatic Overload Protection
- Other mounting configurations

STANDARD FEATURES

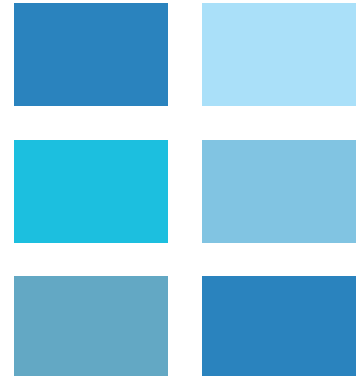
- Three-phase, 2 pole, 60Hz
- Voltage: 208-230/460V
- Squirrel cage rotor
- Ball bearings
- Fan cooled (internally)
- Service factor according to NEMA standard MG 1-18.329
- Insulation Class 'B' – ODP
- Insulation Class 'F' – TEFC
- Standard: NEMA-MG 1-18.326
- Rotation: Reversible
- Stainless steel shaft end
- Threaded center hole
- Color: Munsell N1 (Black)



HIGHLIGHTS

- Specially dimensioned shaft
 - Second shaft end
- Stainless steel shaft
 - Footless
- Other mounting configuration
- Manual or Automatic thermal overload protection

All motors are tested according to IEEE 112 std. - method "B" or C390 CSA.



PUMP MOTORS

THREADED – WITH BASE – ODP THREE PHASE

| HP | RPM | NEMA Frame | Catalog Number | List Price | Multi. Sym. | Approx. Shipp. Weight Lbs. | FL Amps 460 | FL Eff % | "C" Dimension (in.) | Voltage | NOTES |
|-------|------|------------|----------------|------------|-------------|----------------------------|-------------|----------|---------------------|---------|--------------|
| 1/3 | 3600 | 56J | .33360S3EJP56J | 224 | P1B | 23 | 1.75 | 0.75 | 59.0 | 10.985 | 208-230/460V |
| 1/2 | 3600 | 56J | .50360S3EJP56J | 236 | P1B | 24 | 1.60 | 1.05 | 61.0 | 10.985 | 208-230/460V |
| 3/4 | 3600 | 56J | .75360S3EJP56J | 271 | P1B | 26 | 1.50 | 1.35 | 66.0 | 11.733 | 208-230/460V |
| 1 | 3600 | 56J | 001360S3EJP56J | 286 | P1B | 29 | 1.40 | 1.65 | 69.0 | 11.733 | 208-230/460V |
| 1 1/2 | 3600 | 56J | 001560S3EJP56J | 296 | P1B | 34 | 1.30 | 2.37 | 71.2 | 12.993 | 208-230/460V |
| 2 | 3600 | 56J | 002360S3EJP56J | 316 | P1B | 39 | 1.20 | 2.85 | 75.0 | 12.993 | 208-230/460V |
| 3 | 3600 | 56HJ | 003360S3EJP56J | 339 | P1B | 45 | 1.15 | 4.05 | 77.0 | 14.174 | 208-230/460V |

- ELECTRICAL FEATURES ON PAGE B-31.
- MECHANICAL FEATURES ON PAGE B-85.



THREADED – LESS BASE – ODP THREE PHASE

| HP | RPM | NEMA Frame | Catalog Number | List Price | Multi. Sym. | Approx. Shipp. Weight Lbs. | Service Factor | FL Amps 460 | FL Eff % | “C” Dimension (in.) | Voltage | NOTES |
|-------|------|------------|-----------------|------------|-------------|----------------------------|----------------|-------------|----------|---------------------|--------------|-------|
| 1/3 | 3600 | 56J | .33360S3EJPR56J | 229 | P1B | 23 | 1.75 | 0.75 | 59.0 | 10.985 | 208-230/460V | |
| 1/2 | 3600 | 56J | .50360S3EJPR56J | 241 | P1B | 24 | 1.60 | 1.05 | 61.0 | 10.985 | 208-230/460V | |
| 3/4 | 3600 | 56J | .75360S3EJPR56J | 278 | P1B | 26 | 1.50 | 1.35 | 66.0 | 11.733 | 208-230/460V | |
| 1 | 3600 | 56J | 001360S3EJPR56J | 287 | P1B | 29 | 1.40 | 1.65 | 69.0 | 11.733 | 208-230/460V | |
| 1 1/2 | 3600 | 56J | 001560S3EJPR56J | 305 | P1B | 34 | 1.30 | 2.37 | 71.2 | 12.993 | 208-230/460V | |
| 2 | 3600 | 56J | 002360S3EJPR56J | 321 | P1B | 39 | 1.20 | 2.85 | 75.0 | 12.993 | 208-230/460V | |
| 3 | 3600 | 56HJ | 003360S3EJPR56J | 350 | P1B | 45 | 1.15 | 4.05 | 77.0 | 14.174 | 208-230/460V | |

- ELECTRICAL FEATURES ON PAGE B-31.
- MECHANICAL FEATURES ON PAGE B-85.



KEYED – C-FACE LESS BASE – ODP THREE PHASE

| HP | RPM | NEMA Frame | Catalog Number | List Price | Multi. Sym. | Approx. Shipp. Weight Lbs. | Service Factor | FL Amps 460 | FL Eff % | “C” Dimension (in.) | Voltage | NOTES |
|-------|------|------------|-----------------|------------|-------------|----------------------------|----------------|-------------|----------|---------------------|--------------|-------|
| 1/3 | 3600 | 56C | .33360S3EJPR56C | 220 | P1A | 23 | 1.75 | 0.75 | 59.0 | 10.315 | 208-230/460V | |
| 1/2 | 3600 | 56C | .50360S3EJPR56C | 224 | P1A | 24 | 1.60 | 1.05 | 61.0 | 10.315 | 208-230/460V | |
| 3/4 | 3600 | 56C | .75360S3EJPR56C | 257 | P1A | 26 | 1.50 | 1.35 | 66.0 | 11.103 | 208-230/460V | |
| 1 | 3600 | 56C | 001360S3EJPR56C | 274 | P1A | 29 | 1.40 | 1.65 | 69.0 | 11.103 | 208-230/460V | |
| 1 1/2 | 3600 | 56C | 001560S3EJPR56C | 290 | P1A | 34 | 1.30 | 2.37 | 71.2 | 12.284 | 208-230/460V | |
| 2 | 3600 | 56C | 002360S3EJPR56C | 311 | P1A | 39 | 1.20 | 2.85 | 75.0 | 12.284 | 208-230/460V | |
| 3 | 3600 | 56HC | 003360S3EJPR56C | 332 | P1A | 45 | 1.15 | 4.05 | 77.0 | 13.645 | 208-230/460V | |

- ELECTRICAL FEATURES ON PAGE B-31.
- MECHANICAL FEATURES ON PAGE B-85.



THREADED – WITH BASE – TEFC THREE PHASE

| HP | RPM | NEMA Frame | Catalog Number | List Price | Multi. Sym. | Approx. Shipp. Weight Lbs. | Service Factor | FL Amps 460 | FL Eff % | “C” Dimension (in.) | Voltage | NOTES |
|-------|------|------------|----------------|------------|-------------|----------------------------|----------------|-------------|----------|---------------------|--------------|-------|
| 1/3 | 3600 | 56J | .3336ES3EJP56J | 259 | P1B | 33 | 1.15 | 0.62 | 59.0 | 11.996 | 208-230/460V | |
| 1/2 | 3600 | 56J | .5036ES3EJP56J | 267 | P1B | 36 | 1.15 | 0.81 | 61.0 | 11.996 | 208-230/460V | |
| 3/4 | 3600 | 56J | .7536ES3EJP56J | 301 | P1B | 40 | 1.15 | 1.09 | 66.0 | 11.996 | 208-230/460V | |
| 1 | 3600 | 56J | 00136ES3EJP56J | 344 | P1B | 44 | 1.15 | 1.44 | 69.0 | 11.996 | 208-230/460V | |
| 1 1/2 | 3600 | 56J | 00156ES3EJP56J | 374 | P1B | 48 | 1.15 | 1.97 | 71.2 | 11.996 | 208-230/460V | |
| 2 | 3600 | 56J | 00236ES3EJP56J | 421 | P1B | 58 | 1.15 | 2.67 | 75.0 | 13.150 | 208-230/460V | |
| 3 | 3600 | 56HJ | 00336ES3EJP56J | 489 | P1B | 67 | 1.00 | 3.80 | 77.0 | 14.330 | 208-230/460V | |

- ELECTRICAL FEATURES ON PAGE B-31.
- MECHANICAL FEATURES ON PAGE B-86.



THREADED – LESS BASE – TEFC THREE PHASE

| HP | RPM | NEMA Frame | Catalog Number | List Price | Multi. Sym. | Approx. Shipp. Weight Lbs. | Service Factor | FL Amps 460 | FL Eff % | “C” Dimension (in.) | Voltage | NOTES |
|-------|------|------------|-----------------|------------|-------------|----------------------------|----------------|-------------|----------|---------------------|--------------|-------|
| 1/3 | 3600 | 56J | .3336ES3EJPR56J | 268 | P1B | 33 | 1.15 | 0.62 | 59.0 | 11.996 | 208-230/460V | |
| 1/2 | 3600 | 56J | .5036ES3EJPR56J | 282 | P1B | 36 | 1.15 | 0.81 | 61.0 | 11.996 | 208-230/460V | |
| 3/4 | 3600 | 56J | .7536ES3EJPR56J | 319 | P1B | 40 | 1.15 | 1.09 | 66.0 | 11.996 | 208-230/460V | |
| 1 | 3600 | 56J | 00136ES3EJPR56J | 346 | P1B | 44 | 1.15 | 1.44 | 69.0 | 11.996 | 208-230/460V | |
| 1 1/2 | 3600 | 56J | 00156ES3EJPR56J | 378 | P1B | 48 | 1.15 | 1.97 | 71.2 | 11.996 | 208-230/460V | |
| 2 | 3600 | 56J | 00236ES3EJPR56J | 430 | P1B | 58 | 1.15 | 2.67 | 75.0 | 13.150 | 208-230/460V | |
| 3 | 3600 | 56HJ | 00336ES3EJPR56J | 503 | P1B | 67 | 1.00 | 3.80 | 77.0 | 14.330 | 208-230/460V | |

- ELECTRICAL FEATURES ON PAGE B-32.
- MECHANICAL FEATURES ON PAGE B-86.



KEYED – ‘C’ FACE LESS BASE – TEFC THREE PHASE

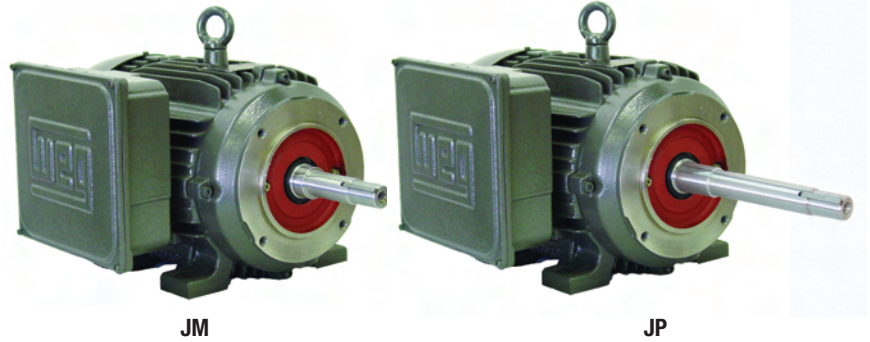
| HP | RPM | NEMA Frame | Catalog Number | List Price | Multi. Sym. | Approx. Shipp. Weight Lbs. | Service Factor | FL Amps 460 | FL Eff % | “C” Dimension (in.) | Voltage | NOTES |
|-------|------|------------|-----------------|------------|-------------|----------------------------|----------------|-------------|----------|---------------------|--------------|-------|
| 1/3 | 3600 | 56C | .3336ES3EJPR56C | 257 | P1A | 33 | 1.15 | 0.62 | 59.0 | 11.496 | 208-230/460V | |
| 1/2 | 3600 | 56C | .5036ES3EJPR56C | 270 | P1A | 36 | 1.15 | 0.81 | 61.0 | 11.496 | 208-230/460V | |
| 3/4 | 3600 | 56C | .7536ES3EJPR56C | 293 | P1A | 40 | 1.15 | 1.09 | 66.0 | 11.496 | 208-230/460V | |
| 1 1/2 | 3600 | 56C | 00156ES3EJPR56C | 371 | P1A | 48 | 1.15 | 1.97 | 71.2 | 11.496 | 208-230/460V | |
| 2 | 3600 | 56C | 00236ES3EJPR56C | 401 | P1A | 58 | 1.15 | 2.67 | 75.0 | 12.677 | 208-230/460V | |
| 3 | 3600 | 56HC | 00336ES3EJPR56C | 480 | P1A | 67 | 1.00 | 3.80 | 77.0 | 13.858 | 208-230/460V | |

- ELECTRICAL FEATURES ON PAGE B-32.
- MECHANICAL FEATURES ON PAGE B-86.



TEFC – SINGLE PHASE

WEG single-phase totally enclosed motors are specifically designed for operating in environments of dirt, dust and excess moisture. Starting capacitors, all cast iron frames, rigid bases, reversible shaft rotation and oversized ball bearings are all standard features. NEMA-T, NEMA 48 & 56 AND IEC METRIC FRAMES ARE ALSO AVAILABLE.



HIGHLIGHTS

- Single and two-speed available
- Space Heaters

APPLICATIONS

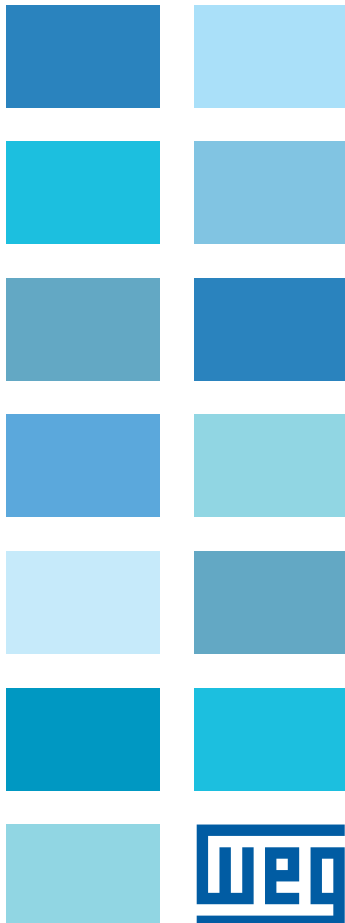
- Pumps

OPTIONAL FEATURES

- Special voltages
- Specially designed shaft
- Second shaft end
- Thermistors or thermostats
- Drip cover (canopy) for shaft down applications
- Stainless steel shaft
- Flange mount

STANDARD FEATURES

- Single-phase, 2 and 4 pole 60Hz
- Voltage: 208-230/460V
- Cast iron frame
- Squirrel cage rotor / Aluminum die cast
- Totally Enclosed Fan Cooled - TEFC (IP55)
- Ball bearings
- NEMA dimensions
- Class 'F' insulation
- Service Factor: 1.15
- Continuous Duty (S1)
- 104°F (40°C) ambient temperature
- Altitude: 3300 ft (1000 m)
- 1045 carbon steel shaft
- F1 mount
- Stainless steel nameplate
- Paint: Enamel alkyd resin base
- Color: RAL 7022 (Dark Gray)
- NPT threaded terminal box
- Automatic drain plugs



All motors are tested according to IEEE 112 Std. – Method 'B' or C390 CSA.





“JM” TYPE – TEFC – SINGLE PHASE

| HP | RPM | NEMA Frame | Catalog Number | List Price | Multi. Sym. | Approx. Shipp. Weight Lbs. | FL Amps 460 | FL Eff % | “C” Dimension (in.) | Voltage | NOTES |
|-----|------|------------|----------------|------------|-------------|----------------------------|-------------|----------|---------------------|--------------|-------|
| 0.5 | 3600 | 143JM | .5036ES1E143JM | 668 | P1 | 26 | 1.70 | 71.3 | 15.458 | 208-230/460V | |
| 1 | 3600 | 143JM | 00136ES1E143JM | 682 | P1 | 33 | 2.90 | 74.5 | 15.458 | 208-230/460V | |
| | 1800 | 143JM | 00118ES1E143JM | 687 | P1 | 37 | 2.85 | 69.8 | 15.458 | 208-230/460V | |
| 1.5 | 3600 | 143JM | 00156ES1E143JM | 729 | P1 | 37 | 3.60 | 81.3 | 15.458 | 208-230/460V | |
| | 1800 | 145JM | 00158ES1E145JM | 754 | P1 | 49 | 3.50 | 76.8 | 16.458 | 208-230/460V | |
| 2 | 3600 | 145JM | 00236ES1E145JM | 770 | P1 | 45 | 4.45 | 86.2 | 16.458 | 208-230/460V | |
| | 1800 | 145JM | 00218ES1E145JM | 814 | P1 | 54 | 4.50 | 79.6 | 16.458 | 208-230/460V | |
| 3 | 3600 | 145JM | 00336ES1E145JM | 1,076 | P1 | 52 | 6.50 | 80.0 | 16.458 | 208-230/460V | |
| | 3600 | 145JM | 00336ES1C145JM | 1,076 | P1 | 52 | 6.50 | 80.0 | 16.458 | 208-230V | |
| | 1800 | 184JM | 00318ES1E184JM | 1,182 | P1 | 131 | 7.25 | 77.2 | 17.368 | 208-230/460V | |
| 5 | 3600 | 184JM | 00536ES1E184JM | 1,457 | P1 | 115 | 10.5 | 83.0 | 17.368 | 208-230/460V | |
| | 3600 | 184JM | 00536ES1C184JM | 1,457 | P1 | 115 | 10.5 | 83.0 | 17.368 | 208-230V | |
| | 1800 | 184JM | 00518ES1E184JM | 1,430 | P1 | 153 | 10.5 | 79.4 | 17.368 | 208-230/460V | |
| 7.5 | 3600 | 213JM | 00736ES1E213JM | 1,641 | P1 | 139 | 16.0 | 84.0 | 18.904 | 208-230/460V | |
| | 3600 | 213JM | 00736ES1C213JM | 1,641 | P1 | 139 | 16.0 | 84.0 | 18.904 | 208-230V | |
| | 1800 | 215JM | 00718ES1E215JM | 1,762 | P1 | 168 | 17.0 | 82.0 | 20.400 | 208-230/460V | |
| 10 | 3600 | 215JM | 01036ES1E215JM | 2,172 | P1 | 172 | 19.5 | 86.3 | 20.400 | 208-230/460V | |
| | 3600 | 215JM | 01036ES1C215JM | 2,172 | P1 | 172 | 19.5 | 86.3 | 20.400 | 208-230V | |
| | 1800 | 215JM | 01018ES1E215JM | 2,057 | P1 | 179 | 20.0 | 83.0 | 20.400 | 208-230/460V | |

• ELECTRICAL FEATURES ON PAGE B-33.

PUMP MOTORS



“JP” TYPE – TEFC – SINGLE PHASE

| HP | RPM | NEMA Frame | Catalog Number | List Price | Multi. Sym. | Approx. Shipp. Weight Lbs. | FL Amps 460 | FL Eff % | “C” Dimension (in.) | Voltage | NOTES |
|-----|------|------------|----------------|------------|-------------|----------------------------|-------------|----------|---------------------|--------------|-------|
| 0.5 | 3600 | 143JP | .5036ES1E143JP | 668 | P1 | 26 | 1.70 | 71.3 | 18.519 | 208-230/460V | |
| 1 | 1800 | 143JP | 00118ES1E143JP | 687 | P1 | 37 | 2.85 | 69.8 | 18.519 | 208-230/460V | |
| 1.5 | 3600 | 143JP | 00156ES1E143JP | 729 | P1 | 37 | 3.60 | 81.3 | 18.519 | 208-230/460V | |
| | 1800 | 145JP | 00158ES1E145JP | 754 | P1 | 49 | 3.50 | 76.8 | 19.519 | 208-230/460V | |
| 2 | 3600 | 145JP | 00236ES1E145JP | 770 | P1 | 45 | 4.45 | 86.2 | 19.519 | 208-230/460V | |
| | 1800 | 145JP | 00218ES1E145JP | 814 | P1 | 54 | 4.50 | 79.6 | 19.519 | 208-230/460V | |
| 3 | 3600 | 145JP | 00336ES1E145JP | 1,076 | P1 | 52 | 6.50 | 80.0 | 19.519 | 208-230/460V | |
| | 1800 | 184JP | 00318ES1E184JP | 1,182 | P1 | 131 | 7.25 | 77.2 | 20.429 | 208-230/460V | |
| 5 | 3600 | 184JP | 00536ES1E184JP | 1,457 | P1 | 115 | 10.5 | 83.0 | 20.429 | 208-230/460V | |
| | 1800 | 184JP | 00518ES1E184JP | 1,430 | P1 | 153 | 10.5 | 79.4 | 20.429 | 208-230/460V | |
| 7.5 | 3600 | 213JP | 00736ES1E213JP | 1,641 | P1 | 139 | 16.0 | 84.0 | 22.776 | 208-230/460V | |
| | 1800 | 215JP | 00718ES1E215JP | 1,762 | P1 | 168 | 17.0 | 82.0 | 24.272 | 208-230/460V | |
| 10 | 3600 | 215JP | 01036ES1E215JP | 2,172 | P1 | 172 | 19.5 | 86.3 | 24.272 | 208-230/460V | |
| | 1800 | 215JP | 01018ES1E215JP | 2,057 | P1 | 179 | 20.0 | 83.0 | 24.272 | 208-230/460V | |

• ELECTRICAL FEATURES ON PAGE B-33.

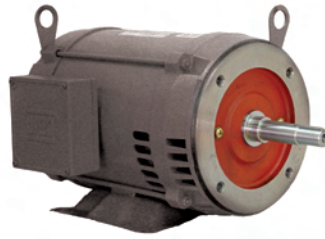


Pump Motors

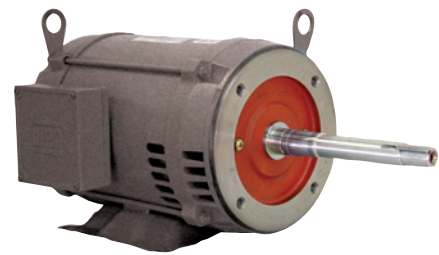
Close Coupled - Standard Efficiency

ODP – THREE PHASE

WEG offers both JM and JP standardized types of ODP close coupled pump line of motors. Remember that ODP are suitable where dirt and moisture are at a minimum.



JM



JP

HIGHLIGHTS

- Single and two-speed available
- Space Heaters

APPLICATIONS

Specially developed line for industrial and commercial pumping applications.

- Water pumping
- Process
- Transfer and circulating pumps

OPTIONAL FEATURES

- Cable glands
- Special Voltages
- Cast iron NEMA C-flange or D-flange (D-flange only for frames 254T and up)
- Special designed shaft
- Second shaft end
- Thermistors, Thermostats or RTD's (PT100)
- Roller bearing on drive end
- IEC metric frames (on request) for frame 254T up to 445T
- Stainless steel shaft
- Class H insulation
- Design C
- 575V

STANDARD FEATURES

- Single-phase, 2, 4 or 6 pole, 60Hz
- Voltage: 115/208-230V
- Squirrel cage rotor
- Start capacitor
- NEMA dimensions
- Class 'B' insulation (130°C)
- High starting torque
- Ball Bearings
- Open drip proof (ODP - IP21)
- Totally enclosed fan cooled (TEFC - IP55)
- Color: RAL 7022 (Dark Gray)
- Continuous Duty (S1), 40°C ambient
- V-ring slingers on both endshields (for TEFC only)
- Designed to operate in any position (for TEFC only)

ALL MOTORS ARE TESTED ACCORDING TO IEEE 112 STD. - METHOD 'B' OR C390 CSA



FRAME – SPECIFIC FEATURES

FOR FRAME 143/5JM/JP, ONLY

- Welded steel plate frames (welded feet)
- Cast iron endshields fixed with through bolt construction
- 'ZZ' bearings (double shielded)
- Degree of protection: IP21

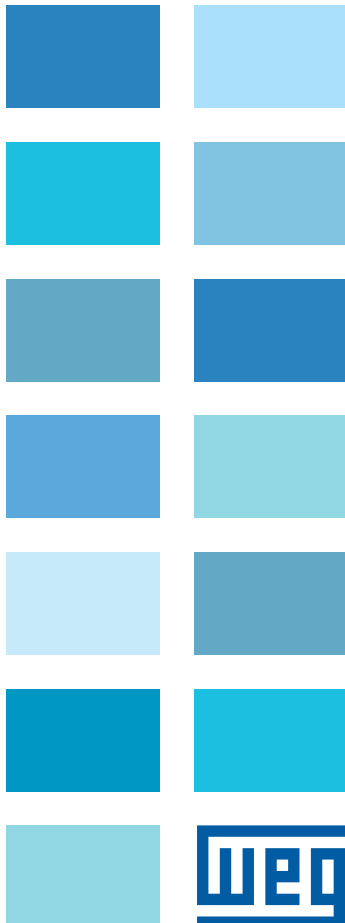
FOR FRAME 182JM up to 215JM

- Welded steel plate frames (welded feet)
- Aluminum endshields and Terminal box

- Cooling system with finned rotor
- Cast iron endshields fixed with through bolt construction
- "ZZ" bearings (double shielded)
- Degree of protection: IP21

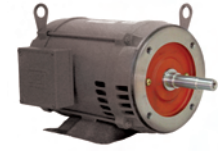
FOR FRAME 254JM UP TO 445JM

- Cast iron frames
- Cast iron endshields and terminal box
- Cooling system with finned rotor
- Regreasable bearings positive pressure lubrication system (frame 254T and up)
- Degree of protection: IP23



CLOSE COUPLED PUMP MOTORS

STANDARD EFFICIENCY

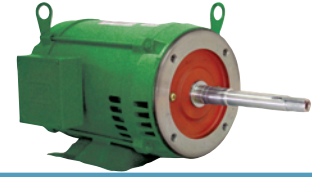


“JM” TYPE – ODP – THREE-PHASE

| HP | RPM | NEMA Frame | Catalog Number | List Price | Multi. Sym. | Approx. Shipp. Weight Lbs. | FL Amps 460 | FL Eff % | “C” Dimension (in.) | Voltage | NOTES |
|-----|------|------------|----------------|------------|-------------|----------------------------|-------------|----------|---------------------|--------------|-------|
| 1 | 1800 | 143JM | 001180S3E143JM | 379 | P1C | 36 | 1.52 | 78.5 | 14.055 | 208-230/460V | |
| 1.5 | 3600 | 143JM | 001560S3E143JM | 400 | P1C | 32 | 2.07 | 78.5 | 14.055 | 208-230/460V | |
| | 1800 | 145JM | 001580S3E145JM | 414 | P1C | 41 | 2.19 | 77.0 | 14.055 | 208-230/460V | |
| 2 | 3600 | 145JM | 002360S3E145JM | 432 | P1C | 43 | 2.71 | 80.0 | 14.055 | 208-230/460V | |
| | 1800 | 145JM | 002180S3E145JM | 433 | P1C | 43 | 2.72 | 82.5 | 14.055 | 208-230/460V | |
| 3 | 3600 | 145JM | 003360S3E145JM | 482 | P1C | 49 | 3.92 | 80.0 | 14.055 | 208-230/460V | |
| | 1800 | 182JM | 003180S3E182JM | 507 | P1C | 56 | 3.94 | 82.5 | 14.527 | 208-230/460V | |
| 5 | 3600 | 182JM | 005360S3E182JM | 628 | P1C | 57 | 6.15 | 85.5 | 14.527 | 208-230/460V | |
| | 1800 | 184JM | 005180S3E184JM | 652 | P1C | 69 | 6.50 | 84.0 | 15.315 | 208-230/460V | |
| 7.5 | 3600 | 184JM | 007360S3E184JM | 785 | P1C | 69 | 8.85 | 86.5 | 15.315 | 208-230/460V | |
| | 1800 | 213JM | 007180S3E213JM | 886 | P1C | 85 | 9.75 | 87.5 | 17.323 | 208-230/460V | |
| 10 | 3600 | 213JM | 010360S3E213JM | 1,007 | P1C | 108 | 12.1 | 87.5 | 17.323 | 208-230/460V | |
| | 1800 | 215JM | 010180S3E215JM | 1,078 | P1C | 109 | 12.5 | 86.5 | 17.323 | 208-230/460V | |
| 15 | 3600 | 215JM | 015360S3E215JM | 1,264 | P1C | 139 | 18.0 | 85.5 | 17.323 | 208-230/460V | |
| | 1800 | 254JM | 015180S3E254JM | 1,513 | P1C | 194 | 20.0 | 87.5 | 22.169 | 208-230/460V | |
| 20 | 3600 | 254JM | 020360S3E254JM | 1,571 | P1C | 213 | 25.5 | 86.8 | 22.169 | 208-230/460V | |
| | 1800 | 256JM | 020180S3E256JM | 1,825 | P1C | 258 | 26.3 | 88.5 | 23.902 | 208-230/460V | |
| 25 | 3600 | 256JM | 025360S3E256JM | 1,941 | P1C | 262 | 30.2 | 88.5 | 23.902 | 208-230/460V | |
| | 1800 | 284JM | 025180S3E284JM | 2,209 | P1C | 300 | 30.3 | 90.2 | 24.261 | 208-230/460V | |
| 30 | 3600 | 284JM | 030360S3E284JM | 2,365 | P1C | 300 | 37.2 | 89.5 | 24.261 | 208-230/460V | |
| | 1800 | 286JM | 030180S3E286JM | 2,549 | P1C | 346 | 36.3 | 89.5 | 25.754 | 208-230/460V | |
| 40 | 3600 | 286JM | 040360S3E286JM | 2,822 | P1C | 388 | 47.5 | 90.2 | 25.754 | 208-230/460V | |
| | 1800 | 324JM | 040180S3E324JM | 2,824 | P1C | 424 | 52.0 | 90.2 | 26.431 | 208-230/460V | |
| 50 | 3600 | 324JM | 050360S3E324JM | 3,610 | P1C | 471 | 57.0 | 92.4 | 26.431 | 208-230/460V | |
| | 1800 | 326JM | 050180S3E326JM | 3,553 | P1C | 515 | 64.0 | 91.0 | 27.927 | 208-230/460V | |
| 60 | 3600 | 326JM | 060360S3E326JM | 4,208 | P1C | 552 | 69.5 | 92.4 | 27.927 | 208-230/460V | |
| | 1800 | 364JM | 060180S3E364JM | 4,549 | P1C | 705 | 73.4 | 91.6 | 29.139 | 208-230/460V | |
| 75 | 3600 | 364JM | 075360S3E364JM | 5,390 | P1C | 681 | 84.0 | 93.0 | 29.139 | 208-230/460V | |
| | 1800 | 365JM | 075180S3E365JM | 5,185 | P1C | 749 | 88.6 | 91.7 | 29.139 | 208-230/460V | |
| 100 | 3600 | 365JM | 100360S3E365JM | 6,368 | P1C | 727 | 112 | 93.0 | 29.139 | 208-230/460V | |
| | 3600 | 365JM | 100360S3G365JM | 6,368 | P1C | 727 | 112 | 93.0 | 29.139 | 460V | |

- ELECTRICAL FEATURES ON PAGE B-34.
- MECHANICAL FEATURES ON PAGE B-88.

PUMP MOTORS



“JP” TYPE – ODP – THREE-PHASE

| HP | RPM | NEMA Frame | Catalog Number | List Price | Multi. Sym. | Approx. Shipp. Weight Lbs. | FL Amps 460 | FL Eff % | “C” Dimension (in.) | Voltage | NOTES |
|-----|------|------------|----------------|------------|-------------|----------------------------|-------------|----------|---------------------|--------------|-------|
| 1 | 1800 | 143JP | 001180S3E143JP | 379 | P1C | 36 | 1.52 | 78.5 | 17.126 | 208-230/460V | |
| 1.5 | 3600 | 143JP | 001560S3E143JP | 400 | P1C | 32 | 2.07 | 78.5 | 17.126 | 208-230/460V | |
| | 1800 | 145JP | 001580S3E145JP | 414 | P1C | 41 | 2.19 | 77.0 | 17.126 | 208-230/460V | |
| 2 | 3600 | 145JP | 002360S3E145JP | 432 | P1C | 43 | 2.71 | 80.0 | 17.126 | 208-230/460V | |
| | 1800 | 145JP | 002180S3E145JP | 433 | P1C | 43 | 2.72 | 82.5 | 17.126 | 208-230/460V | |
| 3 | 3600 | 145JP | 003360S3E145JP | 482 | P1C | 49 | 3.92 | 80.0 | 17.126 | 208-230/460V | |
| | 1800 | 182JP | 003180S3E182JP | 507 | P1C | 56 | 3.94 | 82.5 | 20.236 | 208-230/460V | |
| 5 | 3600 | 182JP | 005360S3E182JP | 628 | P1C | 57 | 6.15 | 85.5 | 20.236 | 208-230/460V | |
| | 1800 | 184JP | 005180S3E184JP | 652 | P1C | 69 | 6.5 | 84.0 | 21.023 | 208-230/460V | |
| 7.5 | 3600 | 184JP | 007360S3E184JP | 785 | P1C | 69 | 8.85 | 86.5 | 21.023 | 208-230/460V | |
| | 1800 | 213JP | 007180S3E213JP | 886 | P1C | 85 | 9.75 | 87.5 | 21.240 | 208-230/460V | |
| 10 | 3600 | 213JP | 010360S3E213JP | 1,007 | P1C | 108 | 12.1 | 87.5 | 21.240 | 208-230/460V | |
| | 1800 | 215JP | 010180S3E215JP | 1,078 | P1C | 109 | 12.5 | 86.5 | 21.240 | 208-230/460V | |
| 15 | 3600 | 215JP | 015360S3E215JP | 1,264 | P1C | 139 | 18.0 | 85.5 | 21.240 | 208-230/460V | |
| | 1800 | 254JP | 015180S3E254JP | 1,513 | P1C | 194 | 20.0 | 87.5 | 25.049 | 208-230/460V | |
| 20 | 3600 | 254JP | 020360S3E254JP | 1,571 | P1C | 213 | 25.5 | 86.8 | 25.049 | 208-230/460V | |
| | 1800 | 256JP | 020180S3E256JP | 1,825 | P1C | 258 | 26.3 | 88.5 | 26.782 | 208-230/460V | |
| 25 | 3600 | 256JP | 025360S3E256JP | 1,941 | P1C | 262 | 30.2 | 88.5 | 26.782 | 208-230/460V | |
| | 1800 | 284JP | 025180S3E284JP | 2,209 | P1C | 300 | 30.3 | 90.2 | 27.141 | 208-230/460V | |
| 30 | 3600 | 284JP | 030360S3E284JP | 2,365 | P1C | 300 | 37.2 | 89.5 | 27.141 | 208-230/460V | |
| | 1800 | 286JP | 030180S3E286JP | 2,549 | P1C | 346 | 36.3 | 89.5 | 28.634 | 208-230/460V | |
| 40 | 3600 | 286JP | 040360S3E286JP | 2,822 | P1C | 388 | 47.5 | 90.2 | 28.634 | 208-230/460V | |
| | 1800 | 324JP | 040180S3E324JP | 2,810 | P1C | 424 | 52.0 | 90.2 | 29.311 | 208-230/460V | |
| 50 | 3600 | 324JP | 050360S3E324JP | 3,610 | P1C | 471 | 57.0 | 92.4 | 29.311 | 208-230/460V | |
| | 1800 | 326JP | 050180S3E326JP | 3,553 | P1C | 515 | 64.0 | 91.0 | 30.807 | 208-230/460V | |
| 60 | 3600 | 326JP | 060360S3E326JP | 4,208 | P1C | 552 | 69.5 | 92.4 | 30.807 | 208-230/460V | |
| | 1800 | 364JP | 060180S3E364JP | 4,549 | P1C | 705 | 73.4 | 91.6 | 32.019 | 208-230/460V | |
| 75 | 3600 | 364JP | 075360S3E364JP | 5,390 | P1C | 681 | 84.0 | 93.0 | 32.019 | 208-230/460V | |
| | 1800 | 365JP | 075180S3E365JP | 5,185 | P1C | 749 | 88.6 | 91.7 | 32.019 | 208-230/460V | |
| | 3600 | 365JP | 100360S3E365JP | 6,368 | P1C | 727 | 112 | 93.0 | 32.019 | 208-230/460V | |
| 100 | 3600 | 365JP | 100360S3G365JP | 6,368 | P1C | 727 | 112 | 93.0 | 32.019 | 460V | |
| | 1800 | 404JP | 100180S3E404JP | 6,468 | P1C | 828 | 121 | 92.4 | 35.263 | 208-230/460V | |
| | 1800 | 404JP | 100180S3G404JP | 6,468 | P1C | 828 | 121 | 92.4 | 35.263 | 460V | |
| 125 | 3600 | 404JP | 125360S3G404JP | 8,791 | P1C | 1070 | 135 | 92.4 | 35.263 | 460V | |
| | 1800 | 405JP | 125180S3G405JP | 8,156 | P1C | 883 | 146 | 92.4 | 35.263 | 460V | |
| 150 | 3600 | 405JP | 150360S3G405JP | 11,585 | P1C | 1125 | 163 | 92.4 | 35.263 | 460V | |

- ELECTRICAL FEATURES ON PAGE B-35.
- MECHANICAL FEATURES ON PAGE B-88.

CLOSE COUPLED PUMP MOTORS

STANDARD EFFICIENCY



“JM” TYPE – ODP – VERTICAL MOTORS

| HP | RPM | NEMA Frame | Catalog Number | List Price | Multi. Sym. | Approx. Shipp. Weight Lbs. | FL Amps 460 | FL Eff % | “C” Dimension (in.) | Voltage | NOTES |
|-----|------|------------|-----------------|------------|-------------|----------------------------|-------------|----------|---------------------|--------------|-------|
| 1 | 1800 | 143JMV | 001180S3E143JMV | 454 | P1 | 36 | 1.52 | 78.5 | 15.196 | 208-230/460V | |
| 1.5 | 1800 | 145JMV | 001580S3E145JMV | 486 | P1 | 41 | 2.19 | 77.0 | 15.196 | 208-230/460V | |
| 2 | 1800 | 145JMV | 002180S3E145JMV | 505 | P1 | 43 | 2.72 | 82.5 | 15.196 | 208-230/460V | |
| 3 | 1800 | 182JMV | 003180S3E182JMV | 637 | P1 | 56 | 3.94 | 82.5 | 15.904 | 208-230/460V | |
| 5 | 3600 | 182JMV | 005360S3E182JMV | 758 | P1 | 57 | 6.15 | 85.5 | 15.904 | 208-230/460V | |
| | 1800 | 184JMV | 005180S3E184JMV | 783 | P1 | 69 | 6.50 | 84.0 | 16.692 | 208-230/460V | |
| 7.5 | 3600 | 184JMV | 007360S3E184JMV | 915 | P1 | 69 | 8.85 | 86.5 | 16.692 | 208-230/460V | |
| | 1800 | 213JMV | 007180S3E213JMV | 1,051 | P1 | 85 | 9.75 | 87.5 | 18.700 | 208-230/460V | |
| 10 | 3600 | 213JMV | 010360S3E213JMV | 1,172 | P1 | 108 | 12.1 | 87.5 | 18.700 | 208-230/460V | |
| | 1800 | 215JMV | 010180S3E215JMV | 1,243 | P1 | 109 | 12.5 | 86.5 | 18.700 | 208-230/460V | |
| 15 | 3600 | 215JMV | 015360S3E215JMV | 1,428 | P1 | 139 | 18.0 | 85.5 | 18.700 | 208-230/460V | |
| 20 | 3600 | 254JMV | 020360S3E254JMV | 1,835 | P1 | 213 | 25.5 | 86.8 | 23.507 | 208-230/460V | |
| 25 | 3600 | 256JMV | 025360S3E256JMV | 2,205 | P1 | 262 | 30.2 | 88.5 | 23.902 | 208-230/460V | |
| 30 | 3600 | 284JMV | 030360S3E284JMV | 2,699 | P1 | 300 | 37.2 | 89.5 | 24.261 | 208-230/460V | |
| 40 | 3600 | 286JMV | 040360S3E286JMV | 3,156 | P1 | 388 | 47.5 | 90.2 | 27.368 | 208-230/460V | |
| 50 | 3600 | 324JMV | 050360S3E324JMV | 4,032 | P1 | 471 | 57.0 | 92.4 | 29.147 | 208-230/460V | |

- ELECTRICAL FEATURES ON PAGE B-34.
- MECHANICAL FEATURES ON PAGE B-88.



PUMP MOTORS

“JP” TYPE – ODP – VERTICAL MOTORS

| HP | RPM | NEMA Frame | Catalog Number | List Price | Multi. Sym. | Approx. Shipp. Weight Lbs. | FL Amps 460 | FL Eff % | “C” Dimension (in.) | Voltage | NOTES |
|-----|------|------------|-----------------|------------|-------------|----------------------------|-------------|----------|---------------------|--------------|-------|
| 1.5 | 3600 | 143JPV | 001560S3E143JPV | 486 | P1 | 32 | 2.07 | 78.5 | 17.126 | 208-230/460V | |
| 2 | 3600 | 145JPV | 002360S3E145JPV | 518 | P1 | 43 | 2.71 | 80.0 | 17.126 | 208-230/460V | |
| 3 | 3600 | 145JPV | 003360S3E145JPV | 613 | P1 | 49 | 3.92 | 80.0 | 17.126 | 208-230/460V | |
| 5 | 3600 | 182JPV | 005360S3E182JPV | 783 | P1 | 57 | 6.15 | 85.5 | 20.236 | 208-230/460V | |
| 7.5 | 3600 | 184JPV | 007360S3E184JPV | 915 | P1 | 69 | 8.85 | 86.5 | 22.400 | 208-230/460V | |
| 10 | 3600 | 213JPV | 010360S3E213JPV | 1,172 | P1 | 108 | 12.1 | 87.5 | 22.617 | 208-230/460V | |
| 15 | 3600 | 215JPV | 015360S3E215JPV | 1,428 | P1 | 139 | 18.0 | 85.5 | 22.617 | 208-230/460V | |
| 20 | 3600 | 254JPV | 020360S3E254JPV | 1,835 | P1 | 213 | 25.5 | 86.8 | 26.387 | 208-230/460V | |
| 25 | 3600 | 256JPV | 025360S3E256JPV | 2,205 | P1 | 262 | 30.2 | 88.5 | 26.782 | 208-230/460V | |
| 30 | 3600 | 284JPV | 030360S3E284JPV | 2,699 | P1 | 300 | 37.2 | 89.5 | 28.755 | 208-230/460V | |
| 40 | 3600 | 286JPV | 040360S3E286JPV | 3,156 | P1 | 388 | 47.5 | 90.2 | 30.248 | 208-230/460V | |
| 50 | 3600 | 324JPV | 050360S3E324JPV | 4,032 | P1 | 471 | 57.0 | 92.4 | 29.311 | 208-230/460V | |

- ELECTRICAL FEATURES ON PAGE B-35.
- MECHANICAL FEATURES ON PAGE B-88.

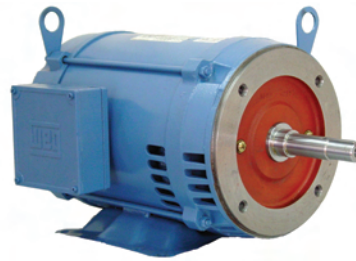


Pump Motors

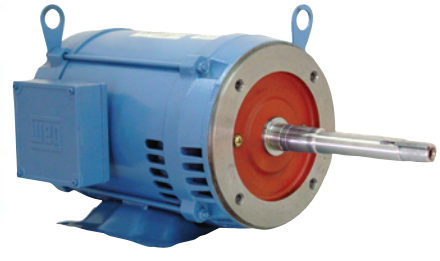
Close Coupled - High Efficiency

ODP – THREE PHASE

WEG offers both JM and JP standardized types of ODP close coupled pump line of motors. Remember that ODP are suitable where dirt and moisture are at a minimum.



JM

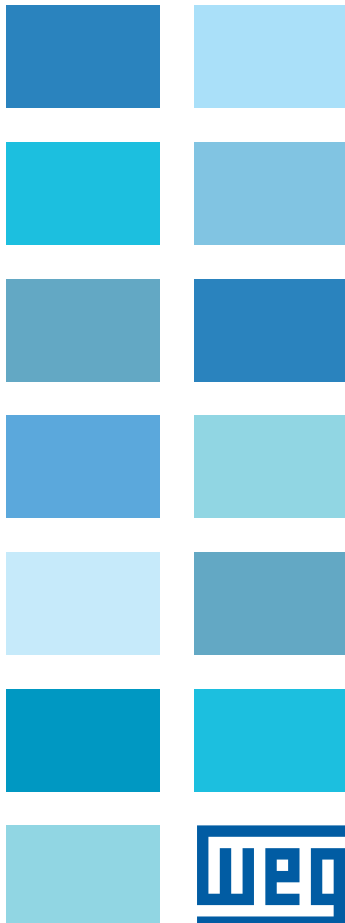


JP

HIGHLIGHTS

- Single and two-speed available
- Space Heaters

PUMP MOTORS



APPLICATIONS

Specially developed line for industrial and commercial pumping applications.

- Water pumping
- Process
- Transfer and circulating pumps

OPTIONAL FEATURES

- Cable glands
- Special Voltages
- Cast iron NEMA C-flange or D-flange (D-flange only for frames 254T and up)
- Special designed shaft
- Second shaft end
- Thermistors, Thermostats or RTD's (PT100)
- Roller bearing on drive end
- IEC metric frames (on request) for frame 254T up to 445T
- Stainless steel shaft
- Class H insulation
- Design C
- 575V

STANDARD FEATURES

- 3 phase, 2, 4 and 6 pole, 60Hz
- Voltage: 208-230/460V, 460V
- Squirrel cage rotor / Aluminum die cast
- Open drip proof design
- NEMA dimensions
- Service factor: 1.15
- Class 'F' insulation
- Temperature rise: Class 'B' (80°C)
- Continuous Duty (S1)
- 104°F (40°C) ambient temperature
- 1045 carbon steel shaft
- F1 mount (with cast iron 'C' Flange)
- Paint: Enamel alkyd resin base
- Color: RAL 5007 (Blue)
- NPT threaded holes in T-Box
- Stainless steel nameplate

ALL MOTORS ARE TESTED ACCORDING TO IEEE 112 STD. - METHOD 'B' OR C390 CSA



FRAME – SPECIFIC FEATURES

FOR FRAME 143/5JM/JP, ONLY

- Welded steel plate frames (welded feet)
- Cast iron endshields fixed with through bolt construction
- 'ZZ' bearings (double shielded)
- Degree of protection: IP21

FOR FRAME 182JM up to 215JM

- Welded steel plate frames (welded feet)
- Aluminum endshields and Terminal box
- Cooling system with finned rotor

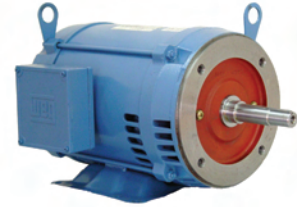
- Cast iron endshields fixed with through bolt construction
- "ZZ" bearings (double shielded)
- Degree of protection: IP21

FOR FRAME 254JM UP TO 445JM

- Cast iron frames
- Cast iron endshields and terminal box
- Cooling system with finned rotor
- Regreasable bearings system (frame 254JM and up)
- Degree of protection: IP23

CLOSE COUPLED PUMP MOTORS

HIGH EFFICIENCY



“JM” TYPE – ODP – THREE-PHASE

| HP | RPM | NEMA Frame | Catalog Number | List Price | Multi. Sym. | Approx. Shipp. Weight Lbs. | FL Amps 460 | FL Eff % | “C” Dimension (in.) | Voltage | NOTES |
|-----|------|------------|----------------|------------|-------------|----------------------------|-------------|----------|---------------------|--------------|-------|
| 1 | 1800 | 143JM | 001180P3E143JM | 437 | P1C | 36 | 1.41 | 82.5 | 14.055 | 208-230/460V | |
| | 3600 | 143JM | 001560P3E143JM | 453 | P1C | 32 | 1.95 | 82.5 | 14.055 | 208-230/460V | |
| 1.5 | 1800 | 145JM | 001580P3E145JM | 478 | P1C | 40 | 1.98 | 84.0 | 14.055 | 208-230/460V | |
| | 3600 | 145JM | 002360P3E145JM | 498 | P1C | 43 | 2.52 | 84.0 | 14.055 | 208-230/460V | |
| 2 | 1800 | 145JM | 002180P3E145JM | 524 | P1C | 43 | 2.87 | 84.0 | 14.055 | 208-230/460V | |
| | 3600 | 145JM | 003360P3E145JM | 565 | P1C | 49 | 3.65 | 84.0 | 14.055 | 208-230/460V | |
| 3 | 1800 | 182JM | 003180P3E182JM | 557 | P1C | 56 | 3.94 | 86.5 | 14.527 | 208-230/460V | |
| | 3600 | 182JM | 005360P3E182JM | 669 | P1C | 57 | 6.17 | 86.5 | 14.527 | 208-230/460V | |
| 5 | 1800 | 184JM | 005180P3E184JM | 740 | P1C | 69 | 6.39 | 87.5 | 15.315 | 208-230/460V | |
| | 3600 | 184JM | 007360P3E184JM | 862 | P1C | 69 | 8.97 | 87.5 | 15.315 | 208-230/460V | |
| 7.5 | 1800 | 213JM | 007180P3E213JM | 945 | P1C | 85 | 9.40 | 88.5 | 17.323 | 208-230/460V | |
| | 3600 | 213JM | 010360P3E213JM | 1,109 | P1C | 108 | 11.8 | 88.5 | 17.323 | 208-230/460V | |
| 10 | 1800 | 215JM | 010180P3E215JM | 1,161 | P1C | 109 | 12.7 | 89.5 | 17.323 | 208-230/460V | |
| | 3600 | 215JM | 015360P3E215JM | 1,447 | P1C | 139 | 17.1 | 89.5 | 17.323 | 208-230/460V | |
| 15 | 1800 | 254JM | 015180P3E254JM | 1,749 | P1C | 247 | 18.7 | 91.0 | 22.169 | 208-230/460V | |
| | 3600 | 254JM | 020360P3E254JM | 1,816 | P1C | 205 | 24.6 | 90.2 | 22.169 | 208-230/460V | |
| 20 | 1800 | 256JM | 020180P3E256JM | 2,107 | P1C | 277 | 25.2 | 91.0 | 23.902 | 208-230/460V | |
| | 3600 | 256JM | 025360P3E256JM | 2,242 | P1C | 251 | 29.3 | 91.0 | 23.902 | 208-230/460V | |
| 25 | 1800 | 284JM | 025180P3E284JM | 2,551 | P1C | 311 | 30.1 | 91.7 | 24.261 | 208-230/460V | |
| | 3600 | 284JM | 030360P3E284JM | 2,731 | P1C | 373 | 34.0 | 92.4 | 24.261 | 208-230/460V | |
| 30 | 1800 | 286JM | 030180P3E286JM | 2,946 | P1C | 397 | 35.6 | 92.4 | 25.754 | 208-230/460V | |
| | 3600 | 286JM | 040360P3E286JM | 3,260 | P1C | 457 | 44.8 | 92.4 | 25.754 | 208-230/460V | |
| 40 | 1800 | 324JM | 040180P3E324JM | 3,354 | P1C | 495 | 48.2 | 93.0 | 26.431 | 208-230/460V | |
| | 3600 | 324JM | 050360P3E324JM | 3,971 | P1C | 523 | 56.4 | 93.6 | 26.431 | 208-230/460V | |
| 50 | 1800 | 326JM | 050180P3E326JM | 4,104 | P1C | 583 | 60.2 | 93.0 | 27.927 | 208-230/460V | |
| | 3600 | 326JM | 060360P3E326JM | 4,859 | P1C | 609 | 70.6 | 93.0 | 27.927 | 208-230/460V | |
| 60 | 3600 | 326JM | 060360P3G326JM | 4,859 | P1C | 609 | 70.6 | 93.0 | 27.927 | 460V | |
| | 1800 | 364JM | 060180P3E364JM | 5,254 | P1C | 743 | 70.2 | 93.6 | 29.139 | 208-230/460V | |
| | 1800 | 364JM | 060180P3G364JM | 5,254 | P1C | 743 | 70.2 | 93.6 | 29.139 | 460V | |
| | 3600 | 364JM | 075360P3E364JM | 6,226 | P1C | 805 | 80.6 | 94.1 | 29.139 | 208-230/460V | |
| 75 | 3600 | 364JM | 075360P3G364JM | 6,226 | P1C | 805 | 80.6 | 94.1 | 29.139 | 460V | |
| | 1800 | 365JM | 075180P3E365JM | 5,989 | P1C | 935 | 85.3 | 94.1 | 29.139 | 208-230/460V | |
| | 1800 | 365JM | 075180P3G365JM | 5,989 | P1C | 935 | 85.3 | 94.1 | 29.139 | 460V | |
| | 3600 | 365JM | 100360P3E365JM | 7,005 | P1C | 935 | 110 | 94.1 | 29.139 | 208-230/460V | |
| 100 | 3600 | 365JM | 100360P3G365JM | 7,005 | P1C | 935 | 110 | 94.1 | 29.139 | 460V | |

- ELECTRICAL FEATURES ON PAGE B-36.
- MECHANICAL FEATURES ON PAGE B-88.

PUMP MOTORS



“JP” TYPE – ODP – THREE-PHASE

| HP | RPM | NEMA Frame | Catalog Number | List Price | Multi. Sym. | Approx. Shipp. Weight Lbs. | FL Amps 460 | FL Eff % | “C” Dimension (in.) | Voltage | NOTES |
|-----|------|------------|----------------|------------|-------------|----------------------------|-------------|----------|---------------------|--------------|-------|
| 1 | 1800 | 143JP | 001180P3E143JP | 437 | P1C | 36 | 1.41 | 82.5 | 17.126 | 208-230/460V | |
| 1.5 | 3600 | 143JP | 001560P3E143JP | 453 | P1C | 32 | 1.95 | 82.5 | 17.126 | 208-230/460V | |
| | 1800 | 145JP | 001580P3E145JP | 478 | P1C | 40 | 1.98 | 84.0 | 17.126 | 208-230/460V | |
| 2 | 3600 | 145JP | 002360P3E145JP | 498 | P1C | 43 | 2.52 | 84.0 | 17.126 | 208-230/460V | |
| | 1800 | 145JP | 002180P3E145JP | 524 | P1C | 43 | 2.87 | 84.0 | 17.126 | 208-230/460V | |
| 3 | 3600 | 145JP | 003360P3E145JP | 565 | P1C | 49 | 3.65 | 84.0 | 17.126 | 208-230/460V | |
| | 1800 | 182JP | 003180P3E182JP | 557 | P1C | 56 | 3.94 | 86.5 | 20.236 | 208-230/460V | |
| 5 | 3600 | 182JP | 005360P3E182JP | 669 | P1C | 57 | 6.17 | 86.5 | 20.236 | 208-230/460V | |
| | 1800 | 184JP | 005180P3E184JP | 739 | P1C | 69 | 6.39 | 87.5 | 21.023 | 208-230/460V | |
| 7.5 | 3600 | 184JP | 007360P3E184JP | 862 | P1C | 69 | 8.97 | 87.5 | 21.023 | 208-230/460V | |
| | 1800 | 213JP | 007180P3E213JP | 946 | P1C | 85 | 9.40 | 88.5 | 21.240 | 208-230/460V | |
| 10 | 3600 | 213JP | 010360P3E213JP | 1,109 | P1C | 108 | 11.8 | 88.5 | 21.240 | 208-230/460V | |
| | 1800 | 215JP | 010180P3E215JP | 1,163 | P1C | 109 | 12.7 | 89.5 | 21.240 | 208-230/460V | |
| 15 | 3600 | 215JP | 015360P3E215JP | 1,447 | P1C | 139 | 17.1 | 89.5 | 21.240 | 208-230/460V | |
| | 1800 | 254JP | 015180P3E254JP | 1,749 | P1C | 247 | 18.7 | 91.0 | 25.049 | 208-230/460V | |
| 20 | 3600 | 254JP | 020360P3E254JP | 1,815 | P1C | 205 | 24.6 | 90.2 | 25.049 | 208-230/460V | |
| | 1800 | 256JP | 020180P3E256JP | 2,107 | P1C | 277 | 25.2 | 91.0 | 26.782 | 208-230/460V | |
| 25 | 3600 | 256JP | 025360P3E256JP | 2,243 | P1C | 251 | 29.3 | 91.0 | 26.782 | 208-230/460V | |
| | 1800 | 284JP | 025180P3E284JP | 2,550 | P1C | 311 | 30.1 | 91.7 | 27.141 | 208-230/460V | |
| 30 | 3600 | 284JP | 030360P3E284JP | 2,731 | P1C | 373 | 34.0 | 92.4 | 27.141 | 208-230/460V | |
| | 1800 | 286JP | 030180P3E286JP | 2,945 | P1C | 397 | 35.6 | 92.4 | 28.634 | 208-230/460V | |
| 40 | 3600 | 286JP | 040360P3E286JP | 3,260 | P1C | 457 | 44.8 | 92.4 | 28.634 | 208-230/460V | |
| | 1800 | 324JP | 040180P3E324JP | 3,354 | P1C | 495 | 48.2 | 93.0 | 29.311 | 208-230/460V | |
| 50 | 3600 | 324JP | 050360P3E324JP | 3,971 | P1C | 523 | 56.4 | 93.6 | 29.311 | 208-230/460V | |
| | 3600 | 324JP | 050360P3G324JP | 3,971 | P1C | 523 | 56.4 | 93.6 | 29.311 | 460V | |
| | 1800 | 326JP | 050180P3E326JP | 4,105 | P1C | 583 | 60.2 | 93.0 | 30.807 | 208-230/460V | |
| 60 | 3600 | 326JP | 060360P3E326JP | 4,859 | P1C | 609 | 70.6 | 93.0 | 30.807 | 208-230/460V | |
| | 3600 | 326JP | 060360P3G326JP | 4,859 | P1C | 609 | 70.6 | 93.0 | 30.807 | 460V | |
| | 1800 | 364JP | 060180P3E364JP | 5,254 | P1C | 743 | 70.2 | 93.6 | 32.019 | 208-230/460V | |
| | 1800 | 364JP | 060180P3G364JP | 5,254 | P1C | 743 | 70.2 | 93.6 | 32.019 | 460V | |
| 75 | 3600 | 364JP | 075360P3E364JP | 6,226 | P1C | 805 | 80.6 | 94.1 | 32.019 | 208-230/460V | |
| | 3600 | 364JP | 075360P3G364JP | 6,226 | P1C | 805 | 80.6 | 94.1 | 32.019 | 460V | |
| | 1800 | 365JP | 075180P3E365JP | 5,989 | P1C | 935 | 85.3 | 94.1 | 32.019 | 208-230/460V | |
| | 1800 | 365JP | 075180P3G365JP | 5,989 | P1C | 935 | 85.3 | 94.1 | 32.019 | 460V | |
| 100 | 3600 | 365JP | 100360P3E365JP | 7,005 | P1C | 935 | 110.0 | 94.1 | 32.019 | 208-230/460V | |
| | 3600 | 365JP | 100360P3G365JP | 7,005 | P1C | 935 | 110 | 94.1 | 32.019 | 460V | |
| | 1800 | 404JP | 100180P3E404JP | 7,469 | P1C | 1037 | 115 | 94.1 | 35.263 | 208-230/460V | |
| | 1800 | 404JP | 100180P3G404JP | 7,469 | P1C | 1037 | 115 | 94.1 | 35.263 | 460V | |
| 125 | 3600 | 404JP | 125360P3G404JP | 9,185 | P1C | 1086 | 132 | 94.1 | 35.263 | 460V | |
| | 1800 | 405JP | 125180P3G405JP | 8,971 | P1C | 1207 | 137 | 94.5 | 35.263 | 460V | |
| 150 | 3600 | 405JP | 150360P3G405JP | 12,106 | P1C | 1401 | 159 | 94.5 | 35.263 | 460V | |

- ELECTRICAL FEATURES ON PAGE B-37.
- MECHANICAL FEATURES ON PAGE B-88.

CLOSE COUPLED PUMP MOTORS

ODP – HIGH EFFICIENCY



“JM” TYPE – ODP – VERTICAL MOTORS

| HP | RPM | NEMA Frame | Catalog Number | List Price | Multi. Sym. | Approx. Shipp. Weight Lbs. | FL Amps 460 | FL Eff % | “C” Dimension (in.) | Voltage | NOTES |
|-----|------|------------|-----------------|------------|-------------|----------------------------|-------------|----------|---------------------|--------------|-------|
| 1 | 1800 | 143JMV | 001180P3E143JMV | 513 | P1C | 36 | 1.41 | 82.5 | 14.756 | 208-230/460V | |
| 1.5 | 3600 | 143JMV | 001560P3E143JMV | 542 | P1C | 32 | 1.95 | 82.5 | 14.756 | 208-230/460V | |
| | 1800 | 145JMV | 001580P3E145JMV | 554 | P1C | 40 | 1.98 | 84.0 | 14.756 | 208-230/460V | |
| 2 | 3600 | 145JMV | 002360P3E145JMV | 573 | P1C | 43 | 2.52 | 84.0 | 14.756 | 208-230/460V | |
| | 1800 | 145JMV | 002180P3E145JMV | 603 | P1C | 43 | 2.87 | 84.0 | 14.756 | 208-230/460V | |
| 3 | 3600 | 145JMV | 003360P3E145JMV | 657 | P1C | 49 | 3.65 | 84.0 | 14.756 | 208-230/460V | |
| | 1800 | 182JMV | 003180P3E182JMV | 687 | P1C | 56 | 3.94 | 86.5 | 15.314 | 208-230/460V | |
| 5 | 3600 | 182JMV | 005360P3E182JMV | 797 | P1C | 57 | 6.17 | 86.5 | 15.314 | 208-230/460V | |
| | 1800 | 184JMV | 005180P3E184JMV | 875 | P1C | 69 | 6.39 | 87.5 | 15.314 | 208-230/460V | |
| 7.5 | 3600 | 184JMV | 007360P3E184JMV | 993 | P1C | 69 | 8.97 | 87.5 | 15.314 | 208-230/460V | |
| | 1800 | 213JMV | 007180P3E213JMV | 1,106 | P1C | 85 | 9.40 | 88.5 | 18.700 | 208-230/460V | |
| 10 | 3600 | 213JMV | 010360P3E213JMV | 1,201 | P1C | 108 | 11.8 | 88.5 | 18.700 | 208-230/460V | |
| | 1800 | 215JMV | 010180P3E215JMV | 1,323 | P1C | 109 | 12.7 | 89.5 | 18.700 | 208-230/460V | |
| 15 | 3600 | 215JMV | 015360P3E215JMV | 1,617 | P1C | 139 | 17.1 | 89.5 | 18.700 | 208-230/460V | |
| 20 | 3600 | 254JMV | 020360P3E254JMV | 2,092 | P1C | 205 | 24.6 | 90.2 | 22.169 | 208-230/460V | |
| 25 | 3600 | 256JMV | 025360P3E256JMV | 2,518 | P1C | 251 | 29.3 | 91.0 | 23.902 | 208-230/460V | |
| 30 | 3600 | 284JMV | 030360P3E284JMV | 3,082 | P1C | 373 | 34.0 | 92.4 | 24.261 | 208-230/460V | |
| 40 | 3600 | 286JMV | 040360P3E286JMV | 3,611 | P1C | 457 | 44.8 | 92.4 | 25.754 | 208-230/460V | |
| 50 | 3600 | 324JMV | 050360P3E324JMV | 4,394 | P1C | 523 | 56.4 | 93.6 | 26.431 | 208-230/460V | |

Note: Prices with Drip Cover Included

- ELECTRICAL FEATURES ON PAGE B-36.
- MECHANICAL FEATURES ON PAGE B-88.



PUMP MOTORS

“JP” TYPE – ODP – VERTICAL MOTORS

| HP | RPM | NEMA Frame | Catalog Number | List Price | Multi. Sym. | Approx. Shipp. Weight Lbs. | FL Amps 460 | FL Eff % | “C” Dimension (in.) | Voltage | NOTES |
|-----|------|------------|-----------------|------------|-------------|----------------------------|-------------|----------|---------------------|--------------|-------|
| 1.5 | 3600 | 143JPV | 001560P3E143JPV | 513 | P1C | 32 | 1.95 | 82.5 | 17.827 | 208-230/460V | |
| 2 | 3600 | 145JPV | 002360P3E145JPV | 559 | P1C | 43 | 2.52 | 84.0 | 17.827 | 208-230/460V | |
| 3 | 3600 | 145JPV | 003360P3E145JPV | 629 | P1C | 49 | 3.65 | 84.0 | 17.827 | 208-230/460V | |
| 5 | 3600 | 182JPV | 005360P3E182JPV | 729 | P1C | 57 | 6.17 | 86.5 | 22.400 | 208-230/460V | |
| 7.5 | 3600 | 184JPV | 007360P3E184JPV | 993 | P1C | 69 | 9.0 | 87.5 | 22.400 | 208-230/460V | |
| 10 | 3600 | 213JPV | 010360P3E213JPV | 1,273 | P1C | 108 | 11.8 | 88.5 | 22.617 | 208-230/460V | |
| 15 | 3600 | 215JPV | 015360P3E215JPV | 1,617 | P1C | 139 | 17.1 | 89.5 | 22.617 | 208-230/460V | |
| 20 | 3600 | 254JPV | 020360P3E254JPV | 2,092 | P1C | 205 | 24.6 | 90.2 | 26.387 | 208-230/460V | |
| 25 | 3600 | 256JPV | 025360P3E256JPV | 2,518 | P1C | 251 | 29.3 | 91.0 | 26.782 | 208-230/460V | |
| 30 | 3600 | 284JPV | 030360P3E284JPV | 3,082 | P1C | 373 | 34 | 92.4 | 28.755 | 208-230/460V | |
| 40 | 3600 | 286JPV | 040360P3E286JPV | 3,611 | P1C | 457 | 44.8 | 92.4 | 30.248 | 208-230/460V | |

Note: Prices with Drip Cover Included

- ELECTRICAL FEATURES ON PAGE B-37.
- MECHANICAL FEATURES ON PAGE B-88.

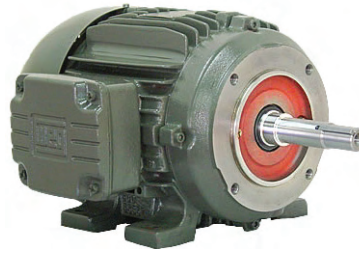


Pump Motors

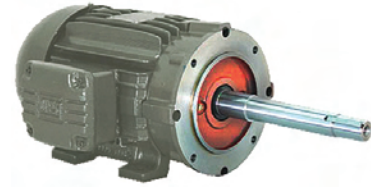
Close Coupled - Standard Efficiency

TEFC – THREE PHASE

WEG offers both JM and JP standardized types of close-coupled pump line of motors. Totally enclosed enclosures permit these motors to operate in moist or dusty atmospheres.



JM



JP

STANDARD FEATURES

- 3 phase, 2, 4, 6 and 8 pole, 60Hz
- Voltage: 208-230/460, 460V
- 2:1 Constant torque
10:1 Variable torque
- Cast iron frames
- Squirrel cage rotor / Aluminum die cast
- Totally Enclosed Fan Cooled
- TEFC (IP55)
- V-ring slingers on both endshields
- Ball bearings
- Service Factor: 1.15
- Class 'F' insulation
- Temperature rise: Class 'B' (80°C)
- Continuous Duty (S1)
- 104°F (40°C) ambient temperature
- Altitude: 3300 ft (1000m)
- 1045 carbon steel shaft
- F1 mount
- Stainless steel nameplate
- Paint: Enamel alkyd resin base
- Color: RAL 7022 (Dark Gray)
- NPT threaded terminal box
- Automatic drain plugs
- Regreasable bearings system (frames 254JM/JP frames and up)

OPTIONAL FEATURES

- Cable glands
- Special voltages
- Specially designed shaft
- Space heaters
- Second shaft end
- Thermistor, Thermostats or RTD's (PT100)
- Additional terminal box
- Stainless steel shaft
- 575V

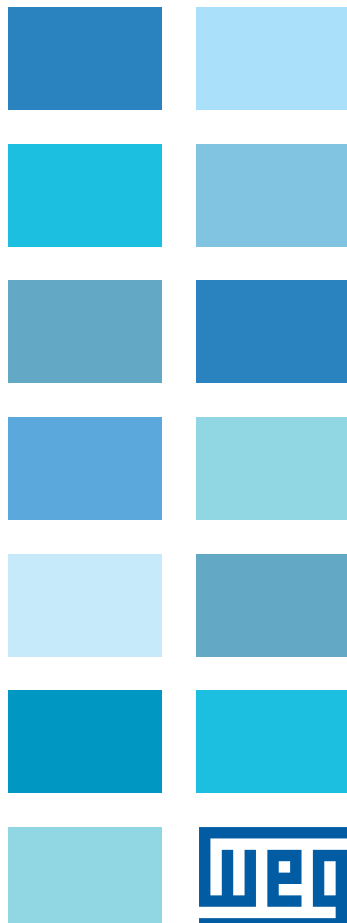
APPLICATIONS

Specially developed line for industrial and commercial pumping applications.

- Water pumping
- Process
- Transfer and circulating pumps

WEG also can provide IEC metric frame, cast iron, TEFC. Please ask for specific catalog.

All motors are tested according to IEEE 112 std. - method 'B' or C390 CSA.



CLOSE COUPLED PUMP MOTORS

STANDARD EFFICIENCY



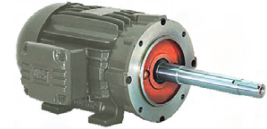
“JM” TYPE – TEFC– THREE-PHASE

| HP | RPM | NEMA Frame | Catalog Number | List Price | Multi. Sym. | Approx. Shipp. Weight Lbs. | FL Amps 460 | FL Eff % | “C” Dimension (in.) | Voltage | NOTES |
|-----|------|------------|----------------|------------|-------------|----------------------------|-------------|----------|---------------------|--------------|-------|
| 1 | 1800 | 143JM | 00118ES3E143JM | 411 | P1 | 40 | 1.51 | 78.0 | 14.304 | 208-230/460V | |
| | 3600 | 143JM | 00156ES3E143JM | 434 | P1 | 40 | 2.04 | 78.0 | 14.304 | 208-230/460V | |
| 1.5 | 1800 | 145JM | 00158ES3E145JM | 449 | P1 | 40 | 2.19 | 79.0 | 15.304 | 208-230/460V | |
| | 3600 | 145JM | 00236ES3E145JM | 467 | P1 | 44 | 2.73 | 78.5 | 15.304 | 208-230/460V | |
| 2 | 1800 | 145JM | 00218ES3E145JM | 470 | P1 | 52 | 2.93 | 82.5 | 15.304 | 208-230/460V | |
| | 3600 | 145JM | 00336ES3E145JM | 533 | P1 | 49 | 4.04 | 81.5 | 15.304 | 208-230/460V | ♣ |
| 3 | 3600 | W182JM | 00336ES3E182JM | 578 | P1 | 88 | 4.04 | 81.5 | 15.996 | 208-230/460V | |
| | 1800 | W182JM | 00318ES3E182JM | 583 | P1 | 73 | 4.13 | 81.5 | 15.996 | 208-230/460V | |
| | 3600 | 182JM | 00536ES3E182JM | 681 | P1 | 93 | 6.15 | 84.5 | 15.996 | 208-230/460V | ♣ |
| 5 | 3600 | W184JM | 00536ES3E184JM | 810 | P1 | 97 | 6.15 | 84.5 | 17.020 | 208-230/460V | |
| | 1800 | 182JM | 00518ES3E182JM | 694 | P1 | 106 | 6.50 | 85.0 | 15.996 | 208-230/460V | ♣ |
| | 1800 | W184JM | 00518ES3E184JM | 756 | P1 | 106 | 6.50 | 85.0 | 17.020 | 208-230/460V | |
| 7.5 | 3600 | 184JM | 00736ES3E184JM | 851 | P1 | 99 | 9.15 | 86.7 | 17.020 | 208-230/460V | ♣ |
| | 3600 | 213JM | 00736ES3E213JM | 935 | P1 | 145 | 8.95 | 86.5 | 18.678 | 208-230/460V | |
| | 1800 | 213JM | 00718ES3E213JM | 959 | P1 | 152 | 9.70 | 87.0 | 18.678 | 208-230/460V | |
| 10 | 3600 | 213JM | 01036ES3E213JM | 1,093 | P1 | 154 | 12.2 | 87.6 | 18.678 | 208-230/460V | ♣ |
| | 3600 | 215JM | 01036ES3E215JM | 1,114 | P1 | 156 | 12.2 | 87.6 | 20.174 | 208-230/460V | |
| | 1800 | 213JM | 01018ES3E213JM | 1,094 | P1 | 150 | 12.8 | 89.0 | 18.678 | 208-230/460V | ♣ |
| | 1800 | 215JM | 01018ES3E215JM | 1,170 | P1 | 150 | 12.8 | 89.0 | 20.174 | 208-230/460V | |
| 15 | 3600 | 215JM | 01536ES3E215JM | 1,372 | P1 | 172 | 17.7 | 87.8 | 20.174 | 208-230/460V | ♣ |
| | 3600 | 254JM | 01536ES3E254JM | 1,570 | P1 | 260 | 18.2 | 87.5 | 24.370 | 208-230/460V | |
| | 1800 | 254JM | 01518ES3E254JM | 1,642 | P1 | 233 | 18.8 | 88.5 | 24.370 | 208-230/460V | |
| 20 | 3600 | 254JM | 02036ES3E254JM | 1,705 | P1 | 255 | 24.1 | 89.0 | 24.370 | 208-230/460V | ♣ |
| | 3600 | 256JM | 02036ES3E256JM | 1,926 | P1 | 269 | 24.1 | 89.0 | 26.102 | 208-230/460V | |
| | 1800 | 256JM | 02018ES3E256JM | 1,980 | P1 | 277 | 25.2 | 90.2 | 26.102 | 208-230/460V | |
| 25 | 3600 | 256JM | 02536ES3E256JM | 2,105 | P1 | 271 | 29.5 | 89.5 | 26.102 | 208-230/460V | ♣ |
| | 3600 | 284JM | 02536ES3E284JM | 2,378 | P1 | 346 | 29.7 | 89.0 | 27.165 | 208-230/460V | |
| | 1800 | 284JM | 02518ES3E284JM | 2,456 | P1 | 371 | 30.2 | 90.5 | 27.165 | 208-230/460V | |
| 30 | 3600 | 284JM | 03036ES3E284JM | 2,565 | P1 | 395 | 35.1 | 89.5 | 27.165 | 208-230/460V | ♣ |
| | 3600 | 286JM | 03036ES3E286JM | 2,730 | P1 | 399 | 35.1 | 89.5 | 28.700 | 208-230/460V | |
| | 1800 | 286JM | 03018ES3E286JM | 2,765 | P1 | 393 | 36.1 | 91.0 | 28.700 | 208-230/460V | |
| 40 | 3600 | 286JM | 04036ES3E286JM | 3,061 | P1 | 404 | 48.6 | 90.2 | 28.700 | 208-230/460V | ♣ |
| | 3600 | 324JM | 04036ES3E324JM | 3,734 | P1 | 515 | 47.4 | 90.4 | 28.149 | 208-230/460V | |
| | 1800 | 324JM | 04018ES3E324JM | 3,342 | P1 | 506 | 48.3 | 91.7 | 28.149 | 208-230/460V | |
| 50 | 3600 | 324JM | 05036ES3E324JM | 3,917 | P1 | 563 | 57.0 | 92.2 | 28.149 | 208-230/460V | ♣ |
| | 3600 | 326JM | 05036ES3E326JM | 4,348 | P1 | 574 | 57.0 | 92.2 | 29.645 | 208-230/460V | |
| | 1800 | 326JM | 05018ES3E326JM | 3,878 | P1 | 557 | 58.5 | 92.4 | 29.645 | 208-230/460V | |
| 60 | 3600 | 326JM | 06036ES3E326JM | 4,565 | P1 | 640 | 70.5 | 92.0 | 29.645 | 208-230/460V | ♣ |
| | 3600 | 364JM | 06036ES3E364JM | 5,461 | P1 | 948 | 68.5 | 91.7 | 33.031 | 208-230/460V | |
| | 1800 | 326JM | 06018ES3E326JM | 4,943 | P1 | 640 | 72.0 | 92.5 | 29.645 | 208-230/460V | ♣ |
| | 1800 | 364JM | 06018ES3E364JM | 6,695 | P1 | 948 | 70.0 | 93.0 | 33.031 | 208-230/460V | |
| 75 | 3600 | 364JM | 07536ES3E364JM | 6,960 | P1 | 1058 | 83.0 | 92.4 | 33.031 | 208-230/460V | ♣ |
| | 3600 | 365JM | 07536ES3E365JM | 8,318 | P1 | 1058 | 83.0 | 92.4 | 33.031 | 208-230/460V | |
| | 1800 | 365JM | 07518ES3E365JM | 7,076 | P1 | 1025 | 84.5 | 93.0 | 33.031 | 208-230/460V | |

PUMP MOTORS

• ELECTRICAL FEATURES ON PAGE B-38. • MECHANICAL FEATURES ON PAGE B-89.

♣ = Reduced Frame ◆ = Product may not be available from stock



“JP” TYPE – TEFC – THREE-PHASE

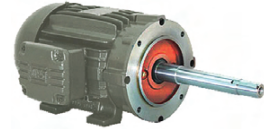
| HP | RPM | NEMA Frame | Catalog Number | List Price | Multi. Sym. | Approx. Shipp. Weight Lbs. | FL Amps 460 | FL Eff % | “C” Dimension (in.) | Voltage | NOTES |
|-----|------|------------|----------------|------------|-------------|----------------------------|-------------|----------|---------------------|--------------|-------|
| 1 | 1800 | 143JP | 00118ES3E143JP | 411 | P1 | 40 | 1.51 | 78.0 | 17.365 | 208-230/460V | |
| 1.5 | 3600 | 143JP | 00156ES3E143JP | 434 | P1 | 40 | 2.04 | 78.0 | 17.365 | 208-230/460V | |
| | 3600 | 143JP | 00156ES3V143JP | 434 | P1 | 40 | 2.04 | 78.0 | 17.365 | 200/400V | |
| | 1800 | 145JP | 00158ES3E145JP | 449 | P1 | 40 | 2.19 | 79.0 | 18.365 | 208-230/460V | |
| 2 | 3600 | 145JP | 00236ES3E145JP | 467 | P1 | 44 | 2.73 | 78.5 | 18.365 | 208-230/460V | |
| | 3600 | 145JP | 00236ES3V145JP | 467 | P1 | 44 | 2.73 | 78.5 | 18.365 | 200/400V | |
| | 1800 | 145JP | 00218ES3E145JP | 470 | P1 | 52 | 2.93 | 82.5 | 18.365 | 208-230/460V | |
| 3 | 3600 | 145JP | 00336ES3E145JP | 522 | P1 | 49 | 4.04 | 81.5 | 18.365 | 208-230/460V | ♣ |
| | 3600 | W182JP | 00336ES3E182JP | 663 | P1 | 88 | 4.04 | 81.5 | 19.057 | 208-230/460V | |
| | 3600 | 182JP | 00336ES3V182JP | 663 | P1 | 88 | 4.04 | 81.5 | 19.057 | 200/400V | |
| | 1800 | W182JP | 00318ES3E182JP | 594 | P1 | 73 | 4.13 | 81.5 | 19.057 | 208-230/460V | |
| 5 | 3600 | 182JP | 00536ES3E182JP | 681 | P1 | 93 | 6.15 | 84.5 | 19.057 | 208-230/460V | ♣ |
| | 3600 | W184JP | 00536ES3E184JP | 810 | P1 | 97 | 6.15 | 84.5 | 20.395 | 208-230/460V | |
| | 3600 | 184JP | 00536ES3V184JP | 810 | P1 | 97 | 6.15 | 84.5 | 20.395 | 200/400V | |
| | 1800 | 182JP | 00518ES3E182JP | 708 | P1 | 106 | 6.50 | 85.0 | 19.057 | 208-230/460V | ♣ |
| | 1800 | W184JP | 00518ES3E184JP | 770 | P1 | 106 | 6.50 | 85.0 | 20.395 | 208-230/460V | |
| 7.5 | 3600 | 184JP | 00736ES3E184JP | 851 | P1 | 99 | 9.15 | 86.7 | 20.395 | 208-230/460V | ♣ |
| | 3600 | 213JP | 00736ES3E213JP | 1,038 | P1 | 145 | 8.95 | 86.5 | 22.550 | 208-230/460V | |
| | 3600 | 213JP | 00736ES3V213JP | 1,038 | P1 | 145 | 8.95 | 86.5 | 22.550 | 200/400V | |
| | 1800 | 213JP | 00718ES3E213JP | 977 | P1 | 152 | 9.70 | 87.0 | 22.550 | 208-230/460V | |
| 10 | 3600 | 213JP | 01036ES3E213JP | 1,093 | P1 | 154 | 12.2 | 87.6 | 22.550 | 208-230/460V | ♣ |
| | 3600 | 215JP | 01036ES3E215JP | 1,114 | P1 | 156 | 12.2 | 87.6 | 24.046 | 208-230/460V | |
| | 3600 | 215JP | 01036ES3V215JP | 1,114 | P1 | 156 | 12.2 | 87.6 | 24.046 | 200/400V | |
| | 1800 | 213JP | 01018ES3E213JP | 1,043 | P1 | 150 | 12.8 | 89.0 | 22.550 | 208-230/460V | ♣ |
| | 1800 | 215JP | 01018ES3E215JP | 1,124 | P1 | 150 | 12.8 | 89.0 | 24.046 | 208-230/460V | |
| 15 | 3600 | 215JP | 01536ES3E215JP | 1,372 | P1 | 172 | 17.7 | 87.8 | 24.046 | 208-230/460V | ♣ |
| | 3600 | 254JP | 01536ES3E254JP | 1,598 | P1 | 260 | 18.2 | 87.5 | 26.964 | 208-230/460V | |
| | 3600 | 254JP | 01536ES3V254JP | 1,598 | P1 | 260 | 18.2 | 87.5 | 26.964 | 200/400V | |
| | 1800 | 254JP | 01518ES3E254JP | 1,642 | P1 | 233 | 18.8 | 88.5 | 26.964 | 208-230/460V | |
| 20 | 3600 | 254JP | 02036ES3E254JP | 1,705 | P1 | 255 | 24.1 | 89.0 | 26.964 | 208-230/460V | ♣ |
| | 3600 | 256JP | 02036ES3E256JP | 1,781 | P1 | 269 | 24.1 | 89.0 | 28.736 | 208-230/460V | |
| | 3600 | 256JP | 02036ES3V256JP | 1,781 | P1 | 269 | 24.1 | 89.0 | 28.736 | 200/400V | |
| | 1800 | 256JP | 02018ES3E256JP | 1,980 | P1 | 277 | 25.2 | 90.2 | 28.736 | 208-230/460V | |
| 25 | 3600 | 256JP | 02536ES3E256JP | 2,105 | P1 | 271 | 29.5 | 89.5 | 28.736 | 208-230/460V | ♣ |
| | 3600 | 284JP | 02536ES3E284JP | 2,443 | P1 | 346 | 29.7 | 89.0 | 30.079 | 208-230/460V | |
| | 3600 | 284JP | 02536ES3V284JP | 2,443 | P1 | 346 | 29.7 | 89.0 | 30.079 | 200/400V | |
| | 1800 | 284JP | 02518ES3E284JP | 2,505 | P1 | 371 | 30.2 | 90.5 | 30.079 | 208-230/460V | |
| 30 | 3600 | 284JP | 03036ES3E284JP | 2,573 | P1 | 395 | 35.1 | 89.5 | 30.079 | 208-230/460V | ♣ |
| | 3600 | 286JP | 03036ES3E286JP | 2,716 | P1 | 399 | 35.1 | 89.5 | 31.575 | 208-230/460V | |
| | 3600 | 286JP | 03036ES3V286JP | 2,716 | P1 | 399 | 35.1 | 89.5 | 31.575 | 200/400V | |
| | 1800 | 286JP | 03018ES3E286JP | 2,765 | P1 | 393 | 36.1 | 91.0 | 31.575 | 208-230/460V | |
| 40 | 3600 | 286JP | 04036ES3E286JP | 3,243 | P1 | 404 | 48.6 | 90.2 | 31.575 | 208-230/460V | ♣ |
| | 3600 | 324JP | 04036ES3E324JP | 3,513 | P1 | 515 | 47.4 | 90.4 | 32.525 | 208-230/460V | |
| | 3600 | 324JP | 04036ES3V324JP | 3,513 | P1 | 515 | 47.4 | 90.4 | 32.525 | 200/400V | |
| | 1800 | 324JP | 04018ES3E324JP | 3,513 | P1 | 506 | 48.3 | 91.7 | 32.525 | 208-230/460V | |

• ELECTRICAL FEATURES ON PAGE B-39. • MECHANICAL FEATURES ON PAGE B-89.

♣ = Reduced Frame ◆ = Product may not be available from stock

CLOSE COUPLED PUMP MOTORS

STANDARD EFFICIENCY



“JP” TYPE – TEFC – THREE-PHASE

| HP | RPM | NEMA Frame | Catalog Number | List Price | Multi. Sym. | Approx. Shipp. Weight Lbs. | FL Amps 460 | FL Eff % | “C” Dimension (in.) | Voltage | NOTES |
|-----|------|------------|----------------|------------|-------------|----------------------------|-------------|----------|---------------------|--------------|-------|
| 50 | 3600 | 324JP | 05036ES3E324JP | 3,917 | P1 | 563 | 57.0 | 92.2 | 32.525 | 208-230/460V | ♣ |
| | 3600 | 326JP | 05036ES3E326JP | 4,229 | P1 | 574 | 57.0 | 92.2 | 34.021 | 208-230/460V | |
| | 3600 | 326JP | 05036ES3V326JP | 4,229 | P1 | 574 | 57.0 | 92.2 | 34.021 | 200/400V | |
| | 1800 | 326JP | 05018ES3E326JP | 4,095 | P1 | 557 | 58.5 | 92.4 | 34.021 | 208-230/460V | |
| 60 | 3600 | 326JP | 06036ES3E326JP | 5,334 | P1 | 640 | 70.5 | 92.0 | 34.021 | 208-230/460V | ♣ |
| | 3600 | 364JP | 06036ES3E364JP | 6,025 | P1 | 948 | 68.5 | 91.7 | 35.916 | 208-230/460V | |
| | 3600 | 364JP | 06036ES3V364JP | 6,025 | P1 | 948 | 68.5 | 91.7 | 35.916 | 200/400V | |
| | 1800 | 326JP | 06018ES3E326JP | 5,621 | P1 | 640 | 72.0 | 92.5 | 34.021 | 208-230/460V | ♣ |
| | 1800 | 364JP | 06018ES3E364JP | 6,829 | P1 | 948 | 70.0 | 93.0 | 35.916 | 208-230/460V | |
| 75 | 3600 | 364JP | 07536ES3E364JP | 7,191 | P1 | 1058 | 83.0 | 92.4 | 35.916 | 208-230/460V | ♣ |
| | 3600 | 365JP | 07536ES3E365JP | 8,483 | P1 | 1058 | 83.0 | 92.4 | 35.916 | 208-230/460V | |
| | 3600 | 365JP | 07536ES3V365JP | 8,483 | P1 | 1058 | 83.0 | 92.4 | 35.916 | 200/400V | |
| | 1800 | 365JP | 07518ES3E365JP | 7,218 | P1 | 1025 | 84.5 | 93.0 | 35.916 | 208-230/460V | |
| 100 | 3600 | 404JP | 10036ES3E404JP | 8,588 | P1 | 1180 | 111 | 93.0 | 38.911 | 208-230/460V | ♣ |
| | 3600 | 404JP | 10036ES3G404JP | 8,588 | P1 | 1180 | 111 | 93.0 | 38.911 | 460V | ♣ |
| | 1800 | 405JP | 10018ES3E405JP | 8,589 | P1 | 1302 | 116 | 93.2 | 38.911 | 208-230/460V | |
| | 1800 | 405JP | 10018ES3G405JP | 8,589 | P1 | 1302 | 116 | 93.2 | 38.911 | 460V | |

- ELECTRICAL FEATURES ON PAGE B-39.
- MECHANICAL FEATURES ON PAGE B-89.

PUMP MOTORS

♣ = Reduced Frame

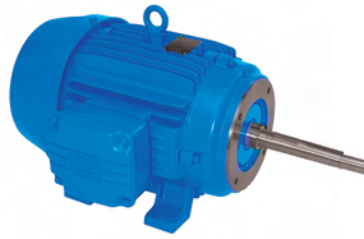


Pump Motors

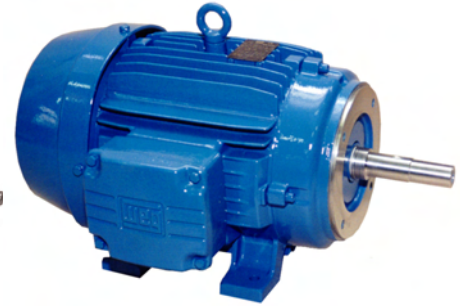
Close Coupled - High Efficiency

TEFC – THREE PHASE

WEG offers both JM and JP standardized types of close-coupled pump line of motors. Totally enclosed enclosures permit these motors to operate in moist or dusty atmospheres.



JP



JM

APPLICATIONS

Specially developed line for industrial and commercial pumping applications.

- Water pumping
- Process
- Transfer and circulating pumps



STANDARD FEATURES

- 3 phase, 2, 4, 6 and 8 pole, 60Hz
- Voltage: 208-230/460, 460V
- 12:1 Constant torque
100:1 Variable torque
- Cast iron frames
- Squirrel cage rotor / Aluminum die cast
- Totally Enclosed Fan Cooled - TEFC
- V-ring slingers on both endshields
- Ball bearings
- Service Factor: 1.25
- Class 'F' insulation
- Temperature rise: Class 'B' (80°C)
- Continuous Duty (S1)
- 104°F (40°C) ambient temperature
- Altitude: 3300 ft (1000m)
- 1045 carbon steel shaft
- F1 mount
- Stainless steel nameplate
- Paint: Enamel alkyd resin base
- Color: RAL 5007 – Blue
- NPT threaded terminal box
- Automatic drain plugs
- Regreasable bearings system (frames 254JM/JP frames and up)

* Design B torque rating on nameplate can be re-plated for Design C for 15-200Hp 1800 and 1200 rpm.

OPTIONAL FEATURES

- Cable glands
- Special voltages
- Specially designed shaft
- Space heaters
- Second shaft end
- Thermistor, Thermostats or RTD's (PT100)
- Additional terminal box
- Stainless steel shaft
- 575V



CLOSE COUPLED PUMP MOTORS

HIGH EFFICIENCY



“JM” TYPE – TEFC – THREE-PHASE

| HP | RPM | NEMA Frame | Catalog Number | List Price | Multi. Sym. | Approx. Shipp. Weight Lbs. | FL Amps 460 | FL Eff % | “C” Dimension (in.) | Voltage | NOTES |
|-----|-------|------------|----------------|------------|-------------|----------------------------|-------------|----------|---------------------|--------------|-------|
| 1 | 1800 | 143JM | 00118EP3E143JM | 497 | P1 | 47 | 1.49 | 82.5 | 14.304 | 208-230/460V | |
| 1.5 | 3600 | 143JM | 00156EP3E143JM | 527 | P1 | 45 | 1.99 | 82.5 | 14.304 | 208-230/460V | |
| | 1800 | 145JM | 00158EP3E145JM | 509 | P1 | 54 | 2.05 | 84.0 | 15.304 | 208-230/460V | |
| 2 | 3600 | 145JM | 00236EP3E145JM | 583 | P1 | 47 | 2.60 | 84.0 | 15.304 | 208-230/460V | |
| | 1800 | 145JM | 00218EP3E145JM | 560 | P1 | 56 | 2.70 | 84.0 | 15.304 | 208-230/460V | |
| 3 | 3600 | 145JM | 00336EP3E145JM | 647 | P1 | 54 | 3.71 | 85.5 | 15.304 | 208-230/460V | ♣ |
| | 3600 | 182JM | 00336EP3E182JM | 744 | P1 | 106 | 3.59 | 85.5 | 15.996 | 208-230/460V | |
| | 1800 | 182JM | 00318EP3E182JM | 886 | P1 | 97 | 3.90 | 87.5 | 15.996 | 208-230/460V | |
| 5 | 3600 | 184JM | 00536EP3E184JM | 922 | P1 | 114 | 5.90 | 87.5 | 17.020 | 208-230/460V | |
| | 1800 | 184JM | 00518EP3E184JM | 993 | P1 | 102 | 6.48 | 87.5 | 17.020 | 208-230/460V | |
| 7.5 | 3600 | 184JM | 00736EP3E184JM | 1,125 | P1 | 128 | 8.76 | 88.5 | 17.020 | 208-230/460V | ♣ |
| | 3600 | 213JM | 00736EP3E213JM | 1,277 | P1 | 150 | 8.66 | 88.5 | 18.678 | 208-230/460V | |
| | 1800 | 213JM | 00718EP3E213JM | 1,256 | P1 | 150 | 9.53 | 89.5 | 18.678 | 208-230/460V | |
| 10 | 3600 | 215JM | 01036EP3E215JM | 1,581 | P1 | 150 | 11.7 | 89.5 | 20.174 | 208-230/460V | |
| | 1800 | 215JM | 01018EP3E215JM | 1,502 | P1 | 165 | 12.8 | 90.2 | 20.174 | 208-230/460V | |
| 15 | 3600 | 215JM | 01536EP3E215JM | 1,803 | P1 | 174 | 17.3 | 90.2 | 20.174 | 208-230/460V | ♣ |
| | 3600 | 254JM | 01536EP3E254JM | 2,029 | P1 | 280 | 17.0 | 90.2 | 24.370 | 208-230/460V | |
| | 1800 | 254JM | 01518EP3E254JM | 2,256 | P1 | 266 | 17.9 | 91.0 | 24.370 | 208-230/460V | |
| 20 | 3600 | 254JM | 02036EP3E254JM | 2,368 | P1 | 304 | 23.3 | 90.2 | 24.370 | 208-230/460V | ♣ |
| | 3600 | 256JM | 02036EP3E256JM | 2,568 | P1 | 313 | 23.3 | 90.2 | 26.102 | 208-230/460V | |
| | 1800 | 256JM | 02018EP3E256JM | 2,490 | P1 | 313 | 24.4 | 91.0 | 26.102 | 208-230/460V | |
| 25 | 3600 | 256JM | 02536EP3E256JM | 2,803 | P1 | 313 | 28.4 | 91.0 | 26.102 | 208-230/460V | ♣ |
| | 3600 | 284JM | 02536EP3E284JM | 2,989 | P1 | 353 | 29.0 | 91.0 | 27.165 | 208-230/460V | |
| | 1800 | 284JM | 02518EP3E284JM | 3,186 | P1 | 437 | 29.6 | 92.4 | 27.165 | 208-230/460V | ◆ |
| 30 | 3600 | 284JM | 03036EP3E284JM | 3,545 | P1 | 399 | 33.8 | 91.0 | 27.165 | 208-230/460V | ♣ |
| | 3600 | 286JM | 03036EP3E286JM | 3,797 | P1 | 404 | 33.8 | 91.0 | 28.700 | 208-230/460V | |
| | 1800 | 286JM | 03018EP3E286JM | 3,559 | P1 | 481 | 34.4 | 92.4 | 28.700 | 208-230/460V | ◆ |
| 40 | 3600* | 286JM | 04036EP3E286JM | 4,353 | P1 | 448 | 46.6 | 91.7 | 28.700 | 208-230/460V | ♣ |
| | 3600 | 324JM | 04036EP3E324JM | 4,746 | P1 | 561 | 46.1 | 91.7 | 28.149 | 208-230/460V | |
| | 1800 | 324JM | 04018EP3E324JM | 4,803 | P1 | 587 | 47.6 | 93.0 | 28.149 | 208-230/460V | ◆ |
| 50 | 3600 | 324JM | 05036EP3E324JM | 5,070 | P1 | 565 | 56.5 | 92.4 | 28.149 | 208-230/460V | ♣ |
| | 3600 | 326JM | 05036EP3E326JM | 5,502 | P1 | 594 | 56.5 | 92.4 | 29.645 | 208-230/460V | |
| | 1800 | 326JM | 05018EP3E326JM | 5,500 | P1 | 640 | 57.8 | 93.6 | 29.645 | 208-230/460V | ◆ |
| 60 | 3600 | 326JM | 06036EP3E326JM | 6,598 | P1 | 594 | 69.0 | 93.0 | 29.645 | 208-230/460V | ♣ |
| | 3600 | 364JM | 06036EP3E364JM | 7,137 | P1 | 917 | 69.0 | 93.0 | 33.031 | 208-230/460V | |
| | 1800 | 326JM | 06018EP3E326JM | 7,349 | P1 | 687 | 72.7 | 93.6 | 29.645 | 208-230/460V | ◆♣ |
| | 1800 | 364JM | 06018EP3E364JM | 7,805 | P1 | 963 | 67.0 | 93.6 | 33.031 | 208-230/460V | ◆ |
| 75 | 3600 | 364JM | 07536EP3E364JM | 8,995 | P1 | 1025 | 82.5 | 93.0 | 33.031 | 208-230/460V | ♣ |
| | 3600 | 365JM | 07536EP3E365JM | 9,848 | P1 | 1025 | 82.5 | 93.0 | 33.031 | 208-230/460V | |
| | 1800 | 365JM | 07518EP3E365JM | 8,860 | P1 | 1010 | 82.4 | 94.1 | 33.031 | 208-230/460V | ◆ |

- ELECTRICAL FEATURES ON PAGE B-40.
- MECHANICAL FEATURES ON PAGE B-89.

♣ = Reduced Frame

◆ = Product may not be available from stock



“JP” TYPE – TEFC – THREE-PHASE

| HP | RPM | NEMA Frame | Catalog Number | List Price | Multi. Sym. | Approx. Shipp. Weight Lbs. | FL Amps 460 | FL Eff % | “C” Dimension (in.) | Voltage | NOTES |
|-----|------|------------|----------------|------------|-------------|----------------------------|-------------|----------|---------------------|--------------|-------|
| 1 | 1800 | 143JP | 00118EP3E143JP | 508 | P1 | 47 | 1.49 | 82.5 | 17.365 | 208-230/460V | |
| | 3600 | 143JP | 00156EP3E143JP | 537 | P1 | 45 | 1.99 | 82.5 | 17.365 | 208-230/460V | |
| 1.5 | 1800 | 145JP | 00158EP3E145JP | 519 | P1 | 54 | 2.05 | 84.0 | 18.365 | 208-230/460V | |
| | 3600 | 145JP | 00236EP3E145JP | 594 | P1 | 47 | 2.60 | 84.0 | 18.365 | 208-230/460V | |
| 2 | 1800 | 145JP | 00218EP3E145JP | 571 | P1 | 56 | 2.70 | 84.0 | 18.365 | 208-230/460V | |
| | 3600 | 145JP | 00336EP3E145JP | 632 | P1 | 54 | 3.71 | 85.5 | 18.365 | 208-230/460V | ♣ |
| 3 | 3600 | 182JP | 00336EP3E182JP | 759 | P1 | 106 | 3.59 | 85.5 | 19.057 | 208-230/460V | |
| | 1800 | 182JP | 00318EP3E182JP | 905 | P1 | 97 | 3.90 | 87.5 | 19.057 | 208-230/460V | |
| 5 | 3600 | 184JP | 00536EP3E184JP | 941 | P1 | 114 | 5.90 | 87.5 | 20.395 | 208-230/460V | |
| | 1800 | 184JP | 00518EP3E184JP | 1,013 | P1 | 102 | 6.48 | 87.5 | 20.395 | 208-230/460V | |
| 7.5 | 3600 | 184JP | 00736EP3E184JP | 1,146 | P1 | 128 | 8.76 | 88.5 | 20.395 | 208-230/460V | ♣ |
| | 3600 | 213JP | 00736EP3E213JP | 1,303 | P1 | 150 | 8.66 | 88.5 | 22.550 | 208-230/460V | |
| 10 | 1800 | 213JP | 00718EP3E213JP | 1,280 | P1 | 150 | 9.53 | 89.5 | 22.550 | 208-230/460V | |
| | 3600 | 215JP | 01036EP3E215JP | 1,613 | P1 | 150 | 11.7 | 89.5 | 24.046 | 208-230/460V | |
| 15 | 1800 | 215JP | 01018EP3E215JP | 1,533 | P1 | 165 | 12.8 | 90.2 | 24.046 | 208-230/460V | |
| | 3600 | 215JP | 01536EP3E215JP | 1,791 | P1 | 174 | 17.3 | 90.2 | 24.046 | 208-230/460V | ♣ |
| 20 | 3600 | 254JP | 01536EP3E254JP | 2,069 | P1 | 280 | 17.0 | 90.2 | 26.964 | 208-230/460V | |
| | 1800 | 254JP | 01518EP3E254JP | 2,300 | P1 | 266 | 17.9 | 91.0 | 26.964 | 208-230/460V | ♣ |
| 25 | 3600 | 254JP | 02036EP3E254JP | 2,451 | P1 | 304 | 23.3 | 90.2 | 26.964 | 208-230/460V | ♣ |
| | 3600 | 256JP | 02036EP3E256JP | 2,621 | P1 | 313 | 23.3 | 90.2 | 28.736 | 208-230/460V | |
| 30 | 1800 | 256JP | 02018EP3E256JP | 2,541 | P1 | 313 | 24.4 | 91.0 | 28.736 | 208-230/460V | ◆ |
| | 3600 | 256JP | 02536EP3E256JP | 2,790 | P1 | 313 | 28.4 | 91.0 | 28.736 | 208-230/460V | ♣ |
| 35 | 3600 | 284JP | 02536EP3E284JP | 3,049 | P1 | 353 | 29.0 | 91.0 | 30.079 | 208-230/460V | |
| | 1800 | 284JP | 02518EP3E284JP | 3,249 | P1 | 437 | 29.6 | 92.4 | 30.079 | 208-230/460V | ◆ |
| 40 | 3600 | 284JP | 03036EP3E284JP | 3,519 | P1 | 399 | 33.8 | 91.0 | 30.079 | 208-230/460V | ♣ |
| | 3600 | 286JP | 03036EP3E286JP | 3,872 | P1 | 404 | 33.8 | 91.0 | 31.575 | 208-230/460V | |
| 50 | 1800 | 286JP | 03018EP3E286JP | 3,630 | P1 | 481 | 34.4 | 92.4 | 31.575 | 208-230/460V | ◆ |
| | 3600 | 286JP | 04036EP3E286JP | 4,545 | P1 | 448 | 46.6 | 91.7 | 31.575 | 208-230/460V | ♣ |
| 60 | 3600 | 324JP | 04036EP3E324JP | 4,840 | P1 | 561 | 46.1 | 91.7 | 32.525 | 208-230/460V | |
| | 1800 | 324JP | 04018EP3E324JP | 4,900 | P1 | 587 | 47.6 | 93.0 | 32.525 | 208-230/460V | ◆ |
| 75 | 3600 | 324JP | 05036EP3E324JP | 4,954 | P1 | 565 | 56.5 | 92.4 | 32.525 | 208-230/460V | ♣ |
| | 3600 | 326JP | 05036EP3E326JP | 5,613 | P1 | 594 | 56.5 | 92.4 | 34.021 | 208-230/460V | |
| 90 | 1800 | 326JP | 05018EP3E326JP | 5,611 | P1 | 640 | 57.8 | 93.6 | 34.021 | 208-230/460V | ◆ |
| | 3600 | 326JP | 06036EP3E326JP | 7,954 | P1 | 594 | 69.0 | 93.0 | 34.021 | 208-230/460V | ♣ |
| 100 | 3600 | 364JP | 06036EP3E364JP | 8,412 | P1 | 917 | 69.0 | 93.0 | 35.916 | 208-230/460V | |
| | 1800 | 326JP | 06018EP3E326JP | 7,176 | P1 | 687 | 72.7 | 93.6 | 34.021 | 208-230/460V | ♣◆ |
| 125 | 1800 | 364JP | 06018EP3E364JP | 7,960 | P1 | 963 | 67.0 | 93.6 | 35.916 | 208-230/460V | ◆ |
| | 3600 | 364JP | 07536EP3E364JP | 9,623 | P1 | 1025 | 82.5 | 93.0 | 35.916 | 208-230/460V | ♣ |
| 150 | 3600 | 365JP | 07536EP3E365JP | 10,045 | P1 | 1025 | 82.5 | 93.0 | 35.916 | 208-230/460V | |
| | 1800 | 365JP | 07518EP3E365JP | 9,038 | P1 | 1010 | 82.4 | 94.1 | 35.916 | 208-230/460V | ◆ |
| 175 | 3600 | 405JP | 10036EP3E405JP | 11,449 | P1 | 1361 | 113 | 93.6 | 38.911 | 208-230/460V | |
| | 3600 | 405JP | 10036EP3G405JP | 11,449 | P1 | 1361 | 113 | 93.6 | 38.911 | 460V | |
| 200 | 1800 | 405JP | 10018EP3E405JP | 10,269 | P1 | 1273 | 115 | 94.5 | 38.911 | 208-230/460V | ◆ |
| | 1800 | 405JP | 10018EP3G405JP | 10,269 | P1 | 1273 | 115 | 94.5 | 38.911 | 460V | ◆ |

• ELECTRICAL FEATURES ON PAGE B-41. • MECHANICAL FEATURES ON PAGE B-89.

♣ = Reduced Frame

◆ = Product may not be available from stock

THREE PHASE

Vertical Hollow Shaft Motors are designed primarily for deep well turbine pump application. The coupling is equipped with a non-reverse ratchet, which prevents motor rotation from backspin at shutdown. These motors are built to NEMA standards and have special bearing arrangements to carry heavy thrust loads.



STANDARD FEATURES

- Three-phase, 4 pole, 60Hz
- Voltage:
 - 230/460V (up to 100HP)
 - 460V (60HP and up)
- Enclosure: Open weather-protected machine Type 1 to NEMA MG 1-1993 (WP-I)
- Cast iron construction
- Frames: 215TP up to 444TP
- Hi-Thrust Design
- Precision Balancing
- 104°F (40°C) ambient temperature
- Class 'F' insulation
- Class 'B' Temperature Rise @ 1.15
- Oversized angular contact bearing and ball bearing
- Large oil reservoir
- Hi-Torque
- VPI treatment
- Non-reverse coupling (ball type) included
- 230/460 suitable for PWS on 230V
- 460V suitable for PWS
- Thermal protected
- Space heater

APPLICATIONS

- Liquid Pumping



“TP” TYPE – STANDARD EFFICIENCY THREE PHASE

| HP | RPM | NEMA Frame | Catalog Number | List Price | Multi. Sym. | Approx. Shipp. Weight Lbs. | FL Amps 460 | FL Eff % | “C” Dimension (in.) | Voltage | High Thrust (Lb.) | NOTES |
|-----|------|------------|------------------|------------|-------------|----------------------------|-------------|----------|---------------------|----------|-------------------|-------|
| 10 | 1800 | 215TP | 010180S3EHS215TP | 2,486 | P2 | 408 | 12.8 | 85.7 | 21.250 | 230/460V | 2500 | |
| 15 | 1800 | 254TP | 015180S3EHS254TP | 2,735 | P2 | 474 | 18.6 | 87.3 | 26.750 | 230/460V | 3200 | |
| 20 | 1800 | 256TP | 020180S3EHS256TP | 3,148 | P2 | 474 | 25.0 | 88.8 | 26.750 | 230/460V | 3200 | |
| 25 | 1800 | 284TP | 025180S3EHS284TP | 4,002 | P2 | 650 | 30.1 | 89.2 | 28.130 | 230/460V | 3200 | |
| 30 | 1800 | 286TP | 030180S3EHS286TP | 4,318 | P2 | 662 | 35.5 | 90.2 | 28.130 | 230/460V | 3200 | |
| 40 | 1800 | 324TP | 040180S3EHS324TP | 5,282 | P2 | 838 | 49.6 | 91.2 | 33.000 | 230/460V | 5500 | |
| 50 | 1800 | 326TP | 050180S3EHS326TP | 5,953 | P2 | 882 | 58.2 | 91.3 | 33.000 | 230/460V | 5500 | |
| 60 | 1800 | 364TP | 060180S3EHS364TP | 6,588 | P2 | 1136 | 71.3 | 92.3 | 36.000 | 230/460V | 5600 | |
| | 1800 | 364TP | 060180S3GHS364TP | 6,588 | P2 | 1136 | 71.3 | 92.3 | 36.000 | 460V | 5600 | |
| 75 | 1800 | 365TP | 075180S3EHS365TP | 8,205 | P2 | 1180 | 87.7 | 92.3 | 36.000 | 230/460V | 5600 | |
| | 1800 | 365TP | 075180S3GHS365TP | 8,205 | P2 | 1180 | 87.7 | 92.3 | 36.000 | 460V | 5600 | |
| 100 | 1800 | 404TP | 100180S3EHS404TP | 9,827 | P2 | 1521 | 115 | 92.3 | 42.500 | 230/460V | 6700 | |
| | 1800 | 404TP | 100180S3GHS404TP | 9,827 | P2 | 1521 | 115.0 | 92.3 | 42.500 | 460V | 6700 | |
| 125 | 1800 | 405TP | 125180S3GHS405TP | 10,247 | P2 | 1588 | 146 | 93.2 | 42.500 | 460V | 6700 | |
| 150 | 1800 | 444TP | 150180S3GHS444TP | 12,263 | P2 | 2139 | 170 | 93.3 | 47.700 | 460V | 8000 | |
| 200 | 1800 | 445TP | 200180S3GHS445TP | 18,956 | P2 | 2249 | 226 | 93.8 | 47.700 | 460V | 8000 | |
| 250 | 1800 | 445TP | 250180S3GHS445TP | 22,089 | P2 | 2359 | 278 | 93.8 | 47.700 | 460V | 8000 | |

- ELECTRICAL FEATURES ON PAGE B-42.
- MECHANICAL FEATURES ON PAGE B-91.

THREE PHASE

HP and HPH types are available. These motors are suitable for dusty or moist environments and provide high starting torque, with efficient performance.



Standard Efficiency



High Efficiency

HIGHLIGHTS

- Ideal for applications with heavy white thrust loads

APPLICATIONS

Normal thrust in-line pump applications

- Waste water treatment plants
- Petro chemical industries
- Pulp and paper mills
- Agricultural irrigation

OPTIONAL FEATURES

- Cable glands
- Special voltages
- Space heaters
- Thermistor, Thermostats or RTD's (PT100)
- Additional terminal box
- Stainless steel shaft
- Design C for High Efficiency and NEMA Premium Efficiency
- Insulation class "H"
- 575V
- 6 & 8 pole, 60Hz

STANDARD FEATURES

- Three-phase, 2, 4 pole, 60Hz
- Voltage: 208-230/460, 460
- HP type: from frames 143HP up to 445HP
- HPH type: frames 284/6HPH and 404/5HPH
- Squirrel cage rotor / Aluminum die cast
- Totally Enclosed Fan Cooled- TEFC (IP55)
- V-ring slingers on both endshields
- Cast iron frame
- Ball bearings
- Class 'F' insulation for all frames
- Service factor for High Efficiency: 1.25 up to 100HP
1.15 from 125HP and up
- Service Factor for Standard Efficiency: 1.15
- Temperature rise: Class 'B' (80°C)
- Continuous Duty (S1)
- 104°F (40°C) ambient temperature
- Altitude: 3300 ft (1000 m)
- 1045 carbon steel shaft
- Usual mounting: V1 - footless
- Stainless steel nameplate
- Paint: Enamel alkyd resin base
- Color: RAL 7022 - Dark Gray (Standard Efficiency)
- Color: RAL 5007 - Blue (High Efficiency)
- NPT threaded terminal box
- Automatic drain plugs
- Regreasable bearings system (frames 254HP and up)
- Drip cover (canopy)
- Class I, Div 2. Groups B, C, D & T3C

| | |
|--|--|
| | |
| | |
| | |
| | |
| | |
| | |
| | |
| | |
| | |



NOTE: Motors are tested according to IEEE 112 std. - method 'B' or C390 CSA. High Efficiency motors are suitable for Inverter Duty.

P-BASE MOTORS



HP & HPH TYPE – TEFC STANDARD EFFICIENCY

| HP | RPM | NEMA Frame | Catalog Number | List Price | Multi. Sym. | Approx. Shipp. Weight Lbs. | FL Amps 460 | FL Eff % | "C" Dimension (in.) | Voltage | NOTES |
|-----|-------|------------|----------------|------------|-------------|----------------------------|-------------|----------|---------------------|--------------|-------|
| 1 | 1800 | 143HP | 00118ES3E143HP | 375 | P1F | 40 | 1.51 | 78.0 | 13.421 | 208-230/460V | |
| | 3600 | 143HP | 00156ES3E143HP | 390 | P1F | 40 | 2.04 | 78.0 | 13.421 | 208-230/460V | |
| 1.5 | 1800 | 145HP | 00158ES3E145HP | 396 | P1F | 40 | 2.19 | 79.0 | 14.397 | 208-230/460V | |
| | 3600 | 145HP | 00236ES3E145HP | 405 | P1F | 44 | 2.73 | 78.5 | 14.397 | 208-230/460V | |
| 2 | 1800 | 145HP | 00218ES3E145HP | 436 | P1F | 52 | 2.93 | 82.5 | 14.397 | 208-230/460V | |
| | 3600 | 145HP | 00336ES3E145HP | 548 | P1F | 49 | 4.04 | 81.5 | 14.397 | 208-230/460V | ♣ |
| 3 | 3600 | 182HP | 00336ES3E182HP | 602 | P1F | 88 | 4.04 | 81.5 | 15.504 | 208-230/460V | |
| | 1800 | 182HP | 00318ES3E182HP | 606 | P1F | 73 | 4.13 | 81.5 | 15.504 | 208-230/460V | |
| | 3600 | 182HP | 00536ES3E182HP | 604 | P1F | 93 | 6.15 | 84.5 | 15.504 | 208-230/460V | ♣ |
| 5 | 3600 | 184HP | 00536ES3E184HP | 721 | P1F | 97 | 6.15 | 84.5 | 16.504 | 208-230/460V | |
| | 1800 | 182HP | 00518ES3E182HP | 723 | P1F | 106 | 6.50 | 85.0 | 15.504 | 208-230/460V | ♣ |
| | 1800 | 184HP | 00518ES3E184HP | 786 | P1F | 106 | 6.50 | 85.0 | 16.504 | 208-230/460V | |
| | 3600 | 184HP | 00736ES3E184HP | 908 | P1F | 99 | 9.15 | 86.7 | 16.504 | 208-230/460V | ♣ |
| 7.5 | 3600 | 213HP | 00736ES3E213HP | 972 | P1F | 145 | 8.95 | 86.5 | 18.630 | 208-230/460V | |
| | 1800 | 213HP | 00718ES3E213HP | 998 | P1F | 152 | 9.70 | 87.0 | 18.630 | 208-230/460V | |
| | 3600 | 213HP | 01036ES3E213HP | 1,032 | P1F | 154 | 12.2 | 87.6 | 18.630 | 208-230/460V | |
| 10 | 3600 | 215HP | 01036ES3E215HP | 1,044 | P1F | 156 | 12.2 | 87.6 | 20.126 | 208-230/460V | |
| | 1800 | 213HP | 01018ES3E213HP | 1,062 | P1F | 150 | 12.8 | 89.0 | 18.630 | 208-230/460V | |
| | 1800 | 215HP | 01018ES3E215HP | 1,148 | P1F | 150 | 12.8 | 89.0 | 20.126 | 208-230/460V | |
| | 3600 | 215HP | 01536ES3E215HP | 1,311 | P1F | 172 | 17.7 | 87.8 | 20.126 | 208-230/460V | ♣ |
| 15 | 3600 | 254HP | 01536ES3E254HP | 1,509 | P1F | 260 | 18.2 | 87.5 | 23.723 | 208-230/460V | |
| | 1800 | 254HP | 01518ES3E254HP | 1,669 | P1F | 233 | 18.8 | 88.5 | 23.723 | 208-230/460V | |
| | 3600 | 254HP | 02036ES3E254HP | 1,643 | P1F | 255 | 24.1 | 89.0 | 23.723 | 208-230/460V | ♣ |
| 20 | 3600 | 256HP | 02036ES3E256HP | 1,796 | P1F | 269 | 24.1 | 89.0 | 25.455 | 208-230/460V | |
| | 1800 | 256HP | 02018ES3E256HP | 1,824 | P1F | 277 | 25.2 | 90.2 | 25.455 | 208-230/460V | |
| | 3600 | 256HP | 02536ES3E256HP | 2,133 | P1F | 271 | 29.5 | 89.5 | 25.455 | 208-230/460V | ♣ |
| 25 | 3600 | 284HP | 02536ES3E284HP | 2,474 | P1F | 346 | 29.7 | 89.0 | 26.350 | 208-230/460V | |
| | 3600 | 284HP | 02536ES3E284HP | 2,474 | P1F | 346 | 29.7 | 89.0 | 25.100 | 208-230/460V | |
| | 1800 | 284HP | 02518ES3E284HP | 2,556 | P1F | 371 | 30.2 | 90.5 | 26.350 | 208-230/460V | |
| | 1800 | 284HP | 02518ES3E284HP | 2,556 | P1F | 371 | 30.2 | 90.5 | 28.100 | 208-230/460V | |
| 30 | 3600 | 284HP | 03036ES3E284HP | 2,695 | P1F | 395 | 35.1 | 89.5 | 26.350 | 208-230/460V | ♣ |
| | 3600 | 286HP | 03036ES3E286HP | 2,772 | P1F | 399 | 35.1 | 89.5 | 27.845 | 208-230/460V | |
| | 3600 | 286HP | 03036ES3E286HP | 2,772 | P1F | 399 | 35.1 | 89.5 | 29.595 | 208-230/460V | |
| | 1800 | 286HP | 03018ES3E286HP | 2,730 | P1F | 393 | 36.1 | 91.0 | 27.845 | 208-230/460V | |
| | 1800 | 286HP | 03018ES3E286HP | 2,730 | P1F | 393 | 36.1 | 91.0 | 29.595 | 208-230/460V | |
| 40 | 3600* | 286HP | 04036ES3E286HP | 3,329 | P1F | 404 | 48.6 | 90.2 | 27.845 | 208-230/460V | ♣ |
| | 3600 | 324HP | 04036ES3E324HP | 3,584 | P1F | 515 | 47.4 | 90.4 | 30.403 | 208-230/460V | |
| | 1800 | 324HP | 04018ES3E324HP | 3,476 | P1F | 506 | 48.3 | 91.7 | 30.403 | 208-230/460V | |
| 50 | 3600 | 324HP | 05036ES3E324HP | 3,899 | P1F | 563 | 57.0 | 92.2 | 30.403 | 208-230/460V | ♣ |
| | 3600 | 326HP | 05036ES3E326HP | 4,178 | P1F | 574 | 57.0 | 92.2 | 31.897 | 208-230/460V | |
| | 1800 | 326HP | 05018ES3E326HP | 4,035 | P1F | 557 | 58.5 | 92.4 | 31.897 | 208-230/460V | |
| 60 | 3600 | 326HP | 06036ES3E326HP | 5,533 | P1F | 640 | 70.5 | 92.0 | 31.897 | 208-230/460V | ♣ |
| | 3600 | 364HP | 06036ES3E364HP | 6,147 | P1F | 948 | 68.5 | 91.7 | 33.684 | 208-230/460V | |
| | 1800 | 326HP | 06018ES3E326HP | 6,074 | P1F | 640 | 72.0 | 92.5 | 31.897 | 208-230/460V | ♣ |
| | 1800 | 364HP | 06018ES3E364HP | 6,966 | P1F | 948 | 70.0 | 93.0 | 33.684 | 208-230/460V | |
| 75 | 3600 | 364HP | 07536ES3E364HP | 8,343 | P1F | 1058 | 83.0 | 92.4 | 33.684 | 208-230/460V | ♣ |
| | 3600 | 365HP | 07536ES3E365HP | 8,654 | P1F | 1058 | 83.0 | 92.4 | 33.684 | 208-230/460V | |
| | 1800 | 365HP | 07518ES3E365HP | 7,362 | P1F | 1025 | 84.5 | 93.0 | 33.684 | 208-230/460V | |
| 100 | 3600 | 404HP | 10036ES3E404HP | 8,819 | P1F | 1180 | 111 | 93.0 | 36.674 | 208-230/460V | ♣ |
| | 3600 | 404HP | 10036ES3G404HP | 8,819 | P1F | 1180 | 111 | 93.0 | 36.674 | 460V | ♣ |
| | 1800 | 405HP | 10018ES3E405HP | 8,762 | P1F | 1302 | 116 | 93.2 | 36.674 | 208-230/460V | |
| | 1800 | 405HP | 10018ES3G405HP | 8,762 | P1F | 1302 | 116 | 93.2 | 36.674 | 460V | |
| | 1800 | 405HP | 10018ES3E405HP | 8,762 | P1F | 1302 | 116 | 93.2 | 36.674 | 208-230/460V | |
| | 1800 | 405HP | 10018ES3G405HP | 8,762 | P1F | 1302 | 116 | 93.2 | 36.674 | 460V | |

• ELECTRICAL FEATURES ON PAGE B-43. • MECHANICAL FEATURES ON PAGE B-92.

♣ = Reduced Frame

PUMP MOTORS



HP & HPH TYPE – TEFC – STANDARD EFFICIENCY

| HP | RPM | NEMA Frame | Catalog Number | List Price | Multi. Sym. | Approx. Shipp. Weight Lbs. | FL Amps 460 | FL Eff % | “C” Dimension (in.) | Voltage | NOTES |
|-----|------|------------|----------------|------------|-------------|----------------------------|-------------|----------|---------------------|---------|-------|
| 125 | 3600 | 444HP | 12536ES3G444HP | 14,261 | P1F | 1797 | 138 | 93.0 | 40.012 | 460V | |
| | 1800 | 444HP | 12518ES3G444HP | 12,450 | P1F | 1742 | 141 | 93.2 | 40.012 | 460V | |
| 150 | 3600 | 445HP | 15036ES3G445HP | 16,283 | P1F | 1797 | 165 | 93.3 | 40.012 | 460V | |
| | 1800 | 445HP | 15018ES3G445HP | 14,162 | P1F | 1940 | 170 | 93.5 | 40.012 | 460V | |

- ELECTRICAL FEATURES ON PAGE B-43.
- MECHANICAL FEATURES ON PAGE B-92.



HP & HPH TYPE – TEFC – HIGH EFFICIENCY

| HP | RPM | NEMA Frame | Catalog Number | List Price | Multi. Sym. | Approx. Shipp. Weight Lbs. | FL Amps 460 | FL Eff % | “C” Dimension (in.) | Voltage | NOTES |
|-----|------|------------|-----------------|------------|-------------|----------------------------|-------------|----------|---------------------|--------------|-------|
| 1 | 1800 | 143HP | 00118EP3E143HP | 503 | P1F | 47 | 1.49 | 82.5 | 13.421 | 208-230/460V | |
| 1.5 | 3600 | 143HP | 00156EP3E143HP | 546 | P1F | 45 | 1.99 | 82.5 | 13.421 | 208-230/460V | |
| | 1800 | 145HP | 00158EP3E145HP | 529 | P1F | 54 | 2.05 | 84.0 | 14.397 | 208-230/460V | |
| 2 | 3600 | 145HP | 00236EP3E145HP | 553 | P1F | 47 | 2.60 | 84.0 | 14.397 | 208-230/460V | |
| | 1800 | 145HP | 00218EP3E145HP | 583 | P1F | 56 | 2.70 | 84.0 | 14.397 | 208-230/460V | |
| 3 | 3600 | 145HP# | 00336EP3E145HP | 822 | P1F | 54 | 3.71 | 85.5 | 14.397 | 208-230/460V | |
| | 3600 | 182HP | 00336EP3E182HP | 881 | P1F | 106 | 3.59 | 85.5 | 15.504 | 208-230/460V | |
| | 1800 | 182HP | 00318EP3E182HP | 879 | P1F | 97 | 3.90 | 87.5 | 15.504 | 208-230/460V | |
| 5 | 3600 | 184HP | 00536EP3E184HP | 1,032 | P1F | 114 | 5.90 | 87.5 | 16.504 | 208-230/460V | |
| | 1800 | 184HP | 00518EP3E184HP | 995 | P1F | 102 | 6.48 | 87.5 | 16.504 | 208-230/460V | |
| 7.5 | 3600 | 184HP# | 00736EP3E184HP | 1,268 | P1F | 128 | 8.76 | 88.5 | 16.504 | 208-230/460V | |
| | 3600 | 213HP | 00736EP3E213HP | 1,371 | P1F | 150 | 8.66 | 88.5 | 18.630 | 208-230/460V | |
| | 1800 | 213HP | 00718EP3E213HP | 1,306 | P1F | 150 | 9.53 | 89.5 | 18.630 | 208-230/460V | |
| 10 | 3600 | 215HP | 01036EP3E215HP | 1,645 | P1F | 150 | 11.7 | 89.5 | 20.126 | 208-230/460V | |
| | 1800 | 215HP | 01018EP3E215HP | 1,563 | P1F | 165 | 12.8 | 90.2 | 20.126 | 208-230/460V | |
| 15 | 3600 | 215HP# | 01536EP3E215HP | 2,133 | P1F | 174 | 17.3 | 90.2 | 20.126 | 208-230/460V | |
| | 3600 | 254HP | 01536EP3E254HP | 2,345 | P1F | 280 | 17.0 | 90.2 | 23.723 | 208-230/460V | |
| | 1800 | 254HP | 01518EP3E254HP | 2,346 | P1F | 266 | 17.9 | 91.0 | 23.723 | 208-230/460V | |
| 20 | 3600 | 254HP# | 02036EP3E254HP | 2,608 | P1F | 304 | 23.3 | 90.2 | 23.723 | 208-230/460V | |
| | 3600 | 256HP | 02036EP3E256HP | 2,814 | P1F | 313 | 23.3 | 90.2 | 25.455 | 208-230/460V | |
| | 1800 | 256HP | 02018EP3E256HP | 2,591 | P1F | 313 | 24.4 | 91.0 | 25.455 | 208-230/460V | |
| 25 | 3600 | 256HP# | 02536EP3E256HP | 3,177 | P1F | 313 | 28.4 | 91.0 | 25.455 | 208-230/460V | |
| | 3600 | 284HP | 02536EP3E284HP | 3,454 | P1F | 353 | 29.0 | 91.0 | 26.350 | 208-230/460V | |
| | 3600 | 284HPH | 02536EP3E284HPH | 3,454 | P1F | 353 | 29.0 | 91.0 | 28.100 | 208-230/460V | |
| | 1800 | 284HP | 02518EP3E284HP | 3,451 | P1F | 437 | 29.6 | 92.4 | 26.350 | 208-230/460V | |
| | 1800 | 284HPH | 02518EP3E284HPH | 3,451 | P1F | 437 | 29.6 | 92.4 | 28.100 | 208-230/460V | |

- ELECTRICAL FEATURES ON PAGE B-44.
- MECHANICAL FEATURES ON PAGE B-92.

♣ = Reduced Frame



**HP & HPH TYPE – TEFC
HIGH EFFICIENCY**

| HP | RPM | NEMA Frame | Catalog Number | List Price | Multi. Sym. | Approx. Shipp. Weight Lbs. | FL Amps 460 | FL Eff % | “C” Dimension (in.) | Voltage | NOTES |
|-----|-------|------------|-----------------|------------|-------------|----------------------------|-------------|----------|---------------------|--------------|-------|
| 30 | 3600 | 284HP# | 03036EP3E284HP | 3,848 | P1F | 399 | 33.8 | 91.0 | 26.350 | 208-230/460V | |
| | 3600 | 286HP | 03036EP3E286HP | 4,157 | P1F | 404 | 33.8 | 91.0 | 27.845 | 208-230/460V | |
| | 3600 | 286HPH | 03036EP3E286HPH | 4,157 | P1F | 404 | 33.8 | 91.0 | 29.595 | 208-230/460V | |
| | 1800 | 286HP | 03018EP3E286HP | 3,778 | P1F | 481 | 34.4 | 92.4 | 27.845 | 208-230/460V | |
| | 1800 | 286HPH | 03018EP3E286HPH | 3,778 | P1F | 481 | 34.4 | 92.4 | 29.595 | 208-230/460V | |
| 40 | 3600 | 286HP# | 04036EP3E286HP | 4,914 | P1F | 448 | 46.6 | 91.7 | 27.845 | 208-230/460V | |
| | 3600 | 324HP | 04036EP3E324HP | 5,197 | P1F | 561 | 46.1 | 91.7 | 30.403 | 208-230/460V | |
| | 1800 | 324HP | 04018EP3E324HP | 4,997 | P1F | 587 | 47.6 | 93.0 | 30.403 | 208-230/460V | |
| 50 | 3600* | 324HP# | 05036EP3E324HP | 6,153 | P1F | 565 | 56.5 | 92.4 | 30.403 | 208-230/460V | |
| | 3600 | 326HP | 05036EP3E326HP | 6,363 | P1F | 594 | 56.5 | 92.4 | 31.897 | 208-230/460V | |
| | 1800 | 326HP | 05018EP3E326HP | 5,723 | P1F | 640 | 57.8 | 93.6 | 31.897 | 208-230/460V | |
| 60 | 3600 | 326HP# | 06036EP3E326HP | 8,221 | P1F | 594 | 69.0 | 93.0 | 31.897 | 208-230/460V | |
| | 3600 | 364HP | 06036EP3E364HP | 9,032 | P1F | 917 | 69.0 | 93.0 | 33.684 | 208-230/460V | |
| | 1800 | 326HP# | 06018EP3E326HP | 7,641 | P1F | 640 | 71.0 | 93.6 | 31.897 | 208-230/460V | |
| | 1800 | 364HP | 06018EP3E364HP | 8,119 | P1F | 963 | 67.0 | 93.6 | 33.684 | 208-230/460V | |
| 75 | 3600 | 365HP | 07536EP3E365HP | 10,454 | P1F | 1025 | 82.5 | 93.0 | 33.684 | 208-230/460V | |
| | 1800 | 365HP | 07518EP3E365HP | 8,907 | P1F | 1010 | 82.4 | 94.1 | 33.684 | 208-230/460V | |
| 100 | 3600 | 405HP | 10036EP3E405HP | 12,293 | P1F | 1361 | 113 | 93.6 | 36.674 | 208-230/460V | |
| | 3600 | 405HP | 10036EP3G405HP | 12,293 | P1F | 1361 | 113 | 93.6 | 36.674 | 460V | |
| | 3600 | 405HPH | 10036EP3E405HPH | 12,293 | P1F | 1361 | 113 | 93.6 | 36.674 | 208-230/460V | |
| | 3600 | 405HPH | 10036EP3G405HPH | 12,293 | P1F | 1361 | 113 | 93.6 | 36.674 | 460V | |
| | 1800 | 405HP | 10018EP3E405HP | 10,688 | P1F | 1273 | 115 | 94.5 | 36.674 | 208-230/460V | |
| | 1800 | 405HP | 10018EP3G405HP | 10,688 | P1F | 1273 | 115 | 94.5 | 36.674 | 460V | |
| | 1800 | 405HPH | 10018EP3E405HPH | 10,688 | P1F | 1273 | 115 | 94.5 | 36.674 | 208-230/460V | |
| | 1800 | 405HPH | 10018EP3G405HPH | 10,688 | P1F | 1273 | 115 | 94.5 | 36.674 | 460V | |
| 125 | 3600 | 444HP | 12536EP3G444HP | 17,113 | P1F | 1801 | 131 | 94.5 | 40.012 | 460V | |
| | 1800 | 444HP | 12518EP3G444HP | 14,940 | P1F | 1647 | 138 | 94.5 | 40.012 | 460V | |
| 150 | 3600 | 445HP | 15036EP3G445HP | 19,540 | P1F | 1865 | 160 | 94.5 | 40.012 | 460V | |
| | 1800 | 445HP | 15018EP3G445HP | 16,995 | P1F | 1841 | 168 | 95.0 | 40.012 | 460V | |

PUMP MOTORS

- ELECTRICAL FEATURES ON PAGE B-44.
 - MECHANICAL FEATURES ON PAGE B-92.
- ♣ = Reduced Frame

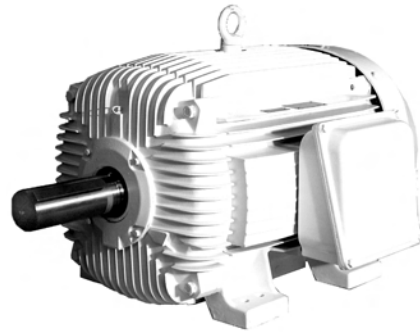


Pump Motors

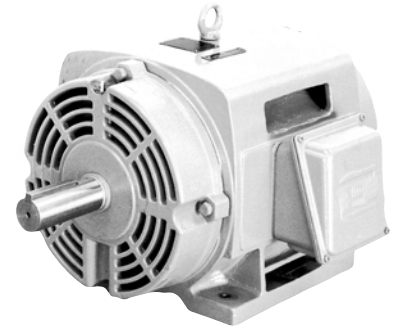
Oil Well Pumping

THREE PHASE

These special motors have the high slip and high torque that oil well beam pumping units demand. WEG oil well pumping motors are requested on specifications for most major oil companies around the world as a result of their long lasting performance, low purchase and maintenance cost.



TEFC



ODP



APPLICATIONS

- Beam Pumps
- Sucker Rod Pumps
- Other applications requiring high starting torque or high slip

OPTIONAL FEATURES

- Special voltages
- Other mountings
- Specially designed shaft
- Space heaters
- Second shaft end
- Thermistors, Thermostats or RTD's (PT100)
- Additional terminal box
- Stainless steel shaft
- 575V

FRAME – SPECIFIC FEATURES (ODP ONLY)

For Frames 184T and 213/5T only (ODP only)

- Welded steel plate frames (welded feet)
- Aluminum endshields and terminal box
- Cooling system with finned rotor
- ZZ bearing (double shielded)
- Degree of protection: IP21
- Service factor: 1.0

For Frames 254/6T and up (ODP only)

- Cast iron frames
- Cast iron endshields and terminal box
- Cooling system with finned rotor
- Regreasable bearings positive pressure lubrication system (frame 254T and up)
- Degree of protection: IP23
- Rodent screen
- Service factor: 1.0

ONLY FOR TEFC (IP55 MOTORS)

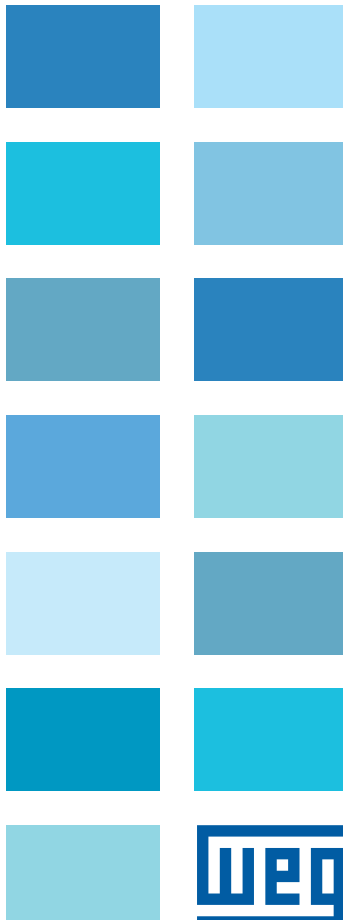
- V-ring slingers on both endshields
- Service factor: 1.15

STANDARD FEATURES

HIGH STARTING and BREAKDOWN TORQUE -

NEMA DESIGN 'D' (5 - 8% SLIP)

- Single and triple rated available
- Three-phase, 60Hz
- Voltage: 208-230/460
- 184T up to 445T cast iron frames
- 6 and 8 pole
- Squirrel cage rotor / Aluminum die cast
- Ball bearings are supplied as standard (100 HP & above Roller Bearings)
- 1045 Carbon Steel Shaft for frames up to 365T. 4140 steel shaft for motors 404T and above.
- Enclosure: Open Drip Proof (ODP) and Totally Enclosed Fan Cooled (TEFC)
- Dimensions according to NEMA standard
- Class 'F' insulation ('B' temperature rise)
- Continuous duty (S1)
- 104°F (40°C) ambient temperature
- Altitude: 3300 ft (1000m)
- F2 mount
- Stainless steel nameplate
- Paint: Enamel alkyd resin base
- NPT threaded terminal box
- Plastic drain plugs
- Regreasable bearings system (frames 254T and up)
- Shaft slingers (V-ring)(TEFC only)
- Rodent screens (ODP only)
- Service factor: 1.00 (ODP only)
- Service factor: 1.15 (TEFC only)
- Color: RAL 9010 (White)
- Roller bearings on frame 404T and up



PUMP MOTORS





HIGH SLIP – NEMA DESIGN ‘D’ ODP WITH SCREENS

| HP | RPM | NEMA Frame | Catalog Number | List Price | Multi. Sym. | Approx. Shipp. Weight Lbs. | FL Amps 460 | FL Eff % | “C” Dimension (in.) | Voltage | NOTES |
|-----|------|------------|-----------------|------------|-------------|----------------------------|-------------|----------|---------------------|--------------|-------|
| 1.5 | 1200 | 184T | 001520S2EOW184T | 776 | P1E | 68 | 2.70 | 71.0 | 14.291 | 208-230/460V | |
| 2 | 1200 | 184T | 002120S3EOW184T | 793 | P1E | 79 | 3.20 | 81.3 | 14.291 | 208-230/460V | |
| 3 | 1200 | 213T | 003120S3EOW213T | 866 | P1E | 101 | 4.70 | 80.7 | 17.165 | 208-230/460V | |
| 5 | 1200 | 215T | 005120S3EOW215T | 989 | P1E | 128 | 7.10 | 86.5 | 17.165 | 208-230/460V | |
| 7.5 | 1200 | 254T | 007120S3EOW254T | 1,434 | P1E | 280 | 10.2 | 79.0 | 20.669 | 208-230/460V | |
| 10 | 1200 | 256T | 010120S3EOW256T | 1,796 | P1E | 416 | 13.7 | 80.0 | 22.401 | 208-230/460V | |
| 15 | 1200 | 284T | 015120S3EOW284T | 2,441 | P1E | 438 | 18.2 | 86.5 | 23.386 | 208-230/460V | |
| 20 | 1200 | 286T | 020120S3EOW286T | 2,603 | P1E | 600 | 24.5 | 86.5 | 24.882 | 208-230/460V | |
| 25 | 1200 | 324T | 025120S3EOW324T | 3,247 | P1E | 613 | 33.2 | 87.5 | 26.181 | 208-230/460V | |
| 30 | 1200 | 326T | 030120S3EOW326T | 3,848 | P1E | 745 | 39.1 | 87.8 | 27.667 | 208-230/460V | |
| 40 | 1200 | 365T | 040120S3EOW365T | 5,277 | P1E | 970 | 50.0 | 89.5 | 29.764 | 208-230/460V | |
| 50 | 1200 | 405T | 050120S3EOW405T | 6,834 | P1E | 1200 | 61.3 | 90.2 | 34.133 | 208-230/460V | |
| 60 | 1200 | 405T | 060120S3EOW405T | 7,495 | P1E | 1355 | 75.0 | 88.5 | 34.133 | 208-230/460V | |
| 75 | 1200 | 445T | 075120S3EOW445T | 12,308 | P1E | 1476 | 95.7 | 90.2 | 39.803 | 208-230/460V | |
| 100 | 1200 | 445T | 100120S3EOW445T | 13,078 | P1E | 2161 | 127 | 90.2 | 39.803 | 208-230/460V | |

- ELECTRICAL FEATURES ON PAGE B-44.
- MECHANICAL FEATURES ON PAGE B-93, B-94.



HIGH SLIP – NEMA DESIGN ‘D’ – TEFC

| HP | RPM | NEMA Frame | Catalog Number | List Price | Multi. Sym. | Approx. Shipp. Weight Lbs. | FL Amps 460 | FL Eff % | “C” Dimension (in.) | Voltage | NOTES |
|-----|------|------------|-----------------|------------|-------------|----------------------------|-------------|----------|---------------------|--------------|-------|
| 3 | 1200 | 215T | 00312ES3EOW215T | 1,027 | P1E | 128 | 5.00 | 75.7 | 19.517 | 208-230/460V | |
| 5 | 1200 | 215T | 00512ES3EOW215T | 1,170 | P1E | 183 | 7.40 | 77.5 | 19.517 | 208-230/460V | |
| | 900 | 256T | 00509ES3EOW256T | 2,242 | P1E | 284 | 7.25 | 77.0 | 24.945 | 208-230/460V | |
| 7.5 | 1200 | 254T | 00712ES3EOW254T | 1,688 | P1E | 280 | 9.25 | 85.6 | 23.213 | 208-230/460V | |
| 10 | 1200 | 256T | 01012ES3EOW256T | 2,070 | P1E | 326 | 12.5 | 85.6 | 24.945 | 208-230/460V | |
| | 900 | 286T | 01009ES3EOW286T | 3,437 | P1E | 382 | 13.9 | 82.5 | 27.929 | 208-230/460V | |
| 15 | 1200 | 284T | 01512ES3EOW284T | 2,679 | P1E | 455 | 18.0 | 87.1 | 26.433 | 208-230/460V | |
| | 900 | 324T | 01509ES3EOW324T | 4,293 | P1E | 548 | 19.5 | 85.5 | 29.620 | 208-230/460V | |
| 20 | 1200 | 286T | 02012ES3EOW286T | 3,162 | P1E | 488 | 24.5 | 87.3 | 27.929 | 208-230/460V | |
| | 900 | 326T | 02009ES3EOW326T | 4,872 | P1E | 656 | 26.2 | 85.5 | 31.116 | 208-230/460V | |
| 25 | 1200 | 324T | 02512ES3EOW324T | 3,887 | P1E | 607 | 30.0 | 88.9 | 29.620 | 208-230/460V | |
| 30 | 1200 | 326T | 03012ES3EOW326T | 4,515 | P1E | 656 | 35.5 | 89.4 | 31.116 | 208-230/460V | |
| 40 | 1200 | 365T | 04012ES3EOW365T | 6,290 | P1E | 950 | 52.5 | 87.5 | 33.709 | 208-230/460V | |
| 50 | 1200 | 404T | 05012ES3EOW404T | 8,172 | P1E | 1189 | 62.0 | 88.1 | 38.077 | 208-230/460V | |
| 60 | 1200 | 405T | 06012ES3EOW405T | 9,414 | P1E | 1500 | 78.5 | 89.0 | 38.077 | 208-230/460V | |
| 75 | 1200 | 444T | 07512ES3EOW444T | 14,976 | P1E | 1720 | 90.0 | 87.0 | 43.776 | 208-230/460V | |
| 100 | 1200 | 445T | 10012ES3EOW445T | 18,074 | P1E | 2039 | 115 | 88.0 | 43.776 | 208-230/460V | |

- ELECTRICAL FEATURES ON PAGE B-45.
- MECHANICAL FEATURES ON PAGE B-95.



HIGH SLIP - NEMA DESIGN 'D' - TEFC TRIPLED RATED

| HP | RPM | NEMA Frame | Catalog Number | List Price | Multi. Sym. | Approx. Shipp. Weight Lbs. | FL Amps 460 | FL Eff % | "C" Dimension (in.) | Voltage | NOTES |
|-----------|------|------------|-----------------|------------|-------------|----------------------------|-------------|----------|---------------------|---------|-------|
| 10/7.5/5 | 1200 | 256T | 01012ES3Q0T256T | 2,174 | P1E | 326 | 12.5 | 85.6 | 24.945 | 460V | |
| 15/10/7.5 | 1200 | 284T | 01512ES3Q0T284T | 2,814 | P1E | 455 | 18.0 | 87.1 | 26.433 | 460V | |
| 20/15/10 | 1200 | 286T | 02012ES3Q0T286T | 3,321 | P1E | 488 | 24.5 | 87.3 | 27.929 | 460V | |
| 25/20/15 | 1200 | 324T | 02512ES3Q0T324T | 4,081 | P1E | 607 | 30.0 | 88.9 | 29.620 | 460V | |
| 30/25/20 | 1200 | 326T | 03012ES3Q0T326T | 4,742 | P1E | 656 | 35.5 | 89.4 | 31.116 | 460V | |
| 40/30/25 | 1200 | 365T | 04012ES3Q0T365T | 6,920 | P1E | 950 | 52.5 | 87.5 | 33.709 | 460V | |
| 50/40/30 | 1200 | 404T | 05012ES3Q0T404T | 8,990 | P1E | 1,189 | 62.0 | 88.1 | 38.077 | 460V | |
| 60/50/40 | 1200 | 444T | 06012ES3Q0T444T | 10,355 | P1E | 1,345 | 78.5 | 89.0 | 38.077 | 460V | |
| 75/60/50 | 1200 | 444T | 07512ES3Q0T444T | 16,473 | P1E | 1,544 | 90.0 | 87.0 | 43.776 | 460V | |
| 100/75/60 | 1200 | 444T | 10012ES3Q0T444T | 19,881 | P1E | 2,039 | 115 | 88.0 | 43.776 | 460V | |

- ELECTRICAL FEATURES ON PAGE B-45.
- MECHANICAL FEATURES ON PAGE B-95.

SINGLE PHASE

These motors are specially designed for Pool Duty. Available in High Service Factor and Low Service Factor with C-Face or Square Flange.



C-Face



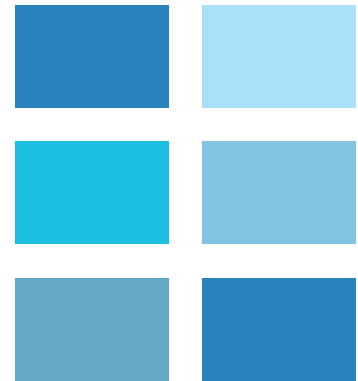
Square-Flange

APPLICATIONS

- Pool and Spa

STANDARD FEATURES

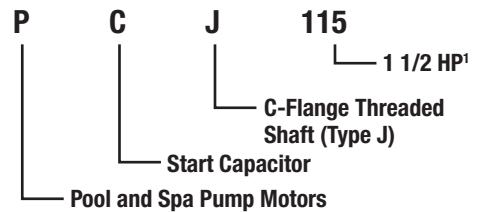
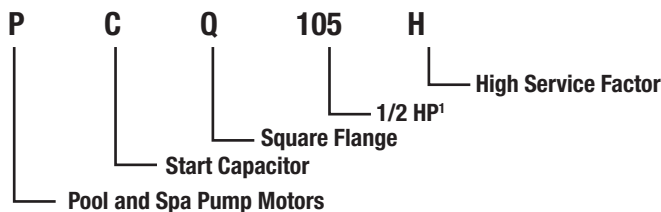
- Single-phase, 2 pole, 60Hz
- Voltage: 115/230V or 230V
- Cast Iron C-face or Aluminum Square Flange
- Open Drip Proof (ODP) IP21
- Dual Compartment up to 2 1/2HP
- 50°C Ambient
- Class 'B' insulation
- CCW (Pump end) - non reversible
- AISI 316 Stainless Steel Shaft
- Automatic overload protection
- Threaded Shaft
- Internal and external grounding
- Terminal box threaded NPT 1/2"
- D.E. sealed ball bearings
- D.E. Endshield sealing - V-ring
- Epoxy Coating
- '1081' Design



PUMP MOTORS

WEG MOTOR ITEM CODIFICATION FOR POOL AND SPA (MODEL NUMBERS)

THE WEG MODEL NUMBERS ARE DISTRIBUTED AS FOLLOWS:



HP¹ – 1/3HP (103) 1/2HP (105) 3/4HP (107) 1HP (110) 1 1/2HP (115) 2HP (120) 2 1/2HP (125) 3HP (130)



C-FACE – ODP – START CAPACITOR

| HP | RPM | NEMA Frame | Catalog Number | List Price | Multi. Sym. | Approx. Shipp. Weight Lbs. | Service Factor | FL Amps 460 | FL Eff % | “C” Dimension (in.) | Voltage | NOTES |
|-------|------|------------|----------------|------------|-------------|----------------------------|----------------|-------------|----------|---------------------|----------|-------|
| 1/2 | 3600 | K56J | PCJ105H | 236 | P1D | 20 | 1.6 | 4.50 | 62.0 | 14.035 | 115/230V | |
| 3/4 | 3600 | K56J | PCJ107H | 263 | P1D | 24 | 1.5 | 5.50 | 69.0 | 14.035 | 115/230V | |
| 1 | 3600 | L56J | PCJ110H | 300 | P1D | 27 | 1.4 | 7.20 | 70.0 | 14.626 | 115/230V | |
| 1 1/2 | 3600 | M56J | PCJ115H | 400 | P1D | 30 | 1.3 | 7.20 | 75.0 | 15.216 | 230V | ▲ |
| 2 | 3600 | M56J | PCJ120H | 486 | P1D | 32 | 1.2 | 8.60 | 80.0 | 15.216 | 230V | ▲ |

High Service Factor - Full Rate

| HP | RPM | NEMA Frame | Catalog Number | List Price | Multi. Sym. | Approx. Shipp. Weight Lbs. | Service Factor | FL Amps 460 | FL Eff % | “C” Dimension (in.) | Voltage | NOTES |
|-------|------|------------|----------------|------------|-------------|----------------------------|----------------|-------------|----------|---------------------|----------|-------|
| 3/4 | 3600 | K56J | PCJ107 | 236 | P1D | 20 | 1.3 | 5.20 | 67.0 | 14.035 | 115/230V | |
| 1 | 3600 | K56J | PCJ110 | 263 | P1D | 24 | 1.25 | 6.30 | 72.0 | 14.035 | 115/230V | |
| 1 1/2 | 3600 | L56J | PCJ115 | 300 | P1D | 27 | 1.1 | 8.90 | 72.0 | 14.626 | 115/230V | |
| 2 | 3600 | M56J | PCJ120 | 400 | P1D | 30 | 1.1 | 9.20 | 77.0 | 15.216 | 230V | ▲ |
| 2 1/2 | 3600 | M56J | PCJ125 | 486 | P1D | 32 | 1.04 | 10.6 | 80.0 | 15.216 | 230V | ▲ |

Low Service Factor - Up Rate



SQUARE FLANGE – ODP – START CAPACITOR

| HP | RPM | NEMA Frame | Catalog Number | List Price | Multi. Sym. | Approx. Shipp. Weight Lbs. | Service Factor | FL Amps 460 | FL Eff % | “C” Dimension (in.) | Voltage | NOTES |
|-------|------|------------|----------------|------------|-------------|----------------------------|----------------|-------------|----------|---------------------|----------|-------|
| 1/3 | 3600 | K48Y | PCQ103H | 231 | P1D | 18 | 1.95 | 3.40 | 54.0 | 13.032 | 115/230V | |
| 1/2 | 3600 | K48Y | PCQ105H | 241 | P1D | 20 | 1.9 | 4.50 | 62.0 | 13.032 | 115/230V | |
| 3/4 | 3600 | K48Y | PCQ107H | 275 | P1D | 24 | 1.65 | 5.50 | 69.0 | 13.032 | 115/230V | |
| 1 | 3600 | L48Y | PCQ110H | 320 | P1D | 27 | 1.65 | 7.20 | 70.0 | 13.622 | 115/230V | |
| 1 1/2 | 3600 | M48Y | PCQ115H | 411 | P1D | 30 | 1.5 | 7.20 | 75.0 | 14.213 | 230V | ▲ |
| 2 | 3600 | M48Y | PCQ120H | 500 | P1D | 32 | 1.3 | 8.60 | 80.0 | 14.213 | 230V | ▲ |

High Service Factor - Full Rate

| HP | RPM | NEMA Frame | Catalog Number | List Price | Multi. Sym. | Approx. Shipp. Weight Lbs. | Service Factor | FL Amps 460 | FL Eff % | “C” Dimension (in.) | Voltage | NOTES |
|-------|------|------------|----------------|------------|-------------|----------------------------|----------------|-------------|----------|---------------------|----------|-------|
| 1/2 | 3600 | K48Y | PCQ105 | 231 | P1D | 18 | 1.3 | 3.80 | 63.0 | 13.032 | 115/230V | |
| 3/4 | 3600 | K48Y | PCQ107 | 241 | P1D | 20 | 1.3 | 5.20 | 67.0 | 13.032 | 115/230V | |
| 1 | 3600 | K48Y | PCQ110 | 275 | P1D | 24 | 1.25 | 6.30 | 72.0 | 13.032 | 115/230V | |
| 1 1/2 | 3600 | L48Y | PCQ115 | 320 | P1D | 27 | 1.1 | 8.90 | 72.0 | 13.622 | 115/230V | |
| 2 | 3600 | M48Y | PCQ120 | 411 | P1D | 30 | 1.1 | 9.20 | 77.0 | 14.213 | 230V | ▲ |
| 2 1/2 | 3600 | M48Y | PCQ125 | 500 | P1D | 32 | 1.04 | 10.6 | 80.0 | 14.213 | 230V | ▲ |

▲ = Energy Efficiency • ELECTRICAL FEATURES ON PAGE B-46. • MECHANICAL FEATURES ON PAGE B-96.

CROSS REFERENCE

| TYPE | | HP | RPM | FRAME | WEG CATALOG NUMBER | A.O. SMITH/MAGNATEK CATALOG NUMBER | A.O. SMITH CATALOG NUMBER | | | |
|------------------------|----------------------------------|----------------------------|----------------------------|-------|--------------------|------------------------------------|---------------------------|----------------|----------------|--------|
| START CAPACITOR | C-FLANGE (THREADED SHAFT) | HIGH SERVICE FACTOR | | 1/2 | 3600 | K56J | PCJ105H | B986 (NEPTUNE) | ST1052 | |
| | | 3/4 | 3600 | K56J | PCJ107H | B988 (NEPTUNE) | ST1072 | | | |
| | | 1 | 3600 | L56J | PCJ110H | B990 (NEPTUNE) | ST1102 | | | |
| | | 1 1/2 | 3600 | M56J | PCJ115H | B992 (NEPTUNE) | ST1152 2) | | | |
| | | 2 | 3600 | M56J | PCJ120H | B993 (NEPTUNE) | ST1202 | | | |
| | | LOW SERVICE FACTOR | | 3/4 | 3600 | K56J | PCJ107 | B995 (NEPTUNE) | UST1072 | |
| | | 2 | 3600 | K56J | PCJ110 | B996 (NEPTUNE) | UST1102 | | | |
| | | 1 1/2 | 3600 | L56J | PCJ115 | B997 (NEPTUNE) | UST1152 | | | |
| | | 2 | 3600 | M56J | PCJ120 | B998 (NEPTUNE) | UST1202 | | | |
| | | 2 1/2 | 3600 | M56J | PCJ125 | B999 (NEPTUNE) | UST1252 | | | |
| | | SQUARE FLANGE | HIGH SERVICE FACTOR | | 1/3 | 3600 | K48Y | PCQ103H | B879 (NEPTUNE) | SQ1032 |
| | | | 1/2 | 3600 | K48Y | PCQ105H | B880 (NEPTUNE) | SQ1052 | | |
| | | | 3/4 | 3600 | K48Y | PCQ107H | B881 (NEPTUNE) | SQ1072 | | |
| | | | 1 | 3600 | L48Y | PCQ110H | B883 (NEPTUNE) | SQ1102 | | |
| | 1 1/2 | | 3600 | M48Y | PCQ115H | B875 (NEPTUNE) | SQ1152 4) | | | |
| | 2 | | 3600 | M48Y | PCQ120H | B877 (NEPTUNE) | SQ1202 | | | |
| | LOW SERVICE FACTOR | | 1/2 | 3600 | K48Y | PCQ105 | B882 (NEPTUNE) | USQ1052 | | |
| | 3/4 | | 3600 | K48Y | PCQ107 | B885 (NEPTUNE) | USQ1072 | | | |
| | 1 | | 3600 | K48Y | PCQ110 | B886 (NEPTUNE) | USQ1102 | | | |
| | 1 1/2 | | 3600 | L48Y | PCQ115 | B887 (NEPTUNE) | USQ1152 | | | |
| | 2 | | 3600 | M48Y | PCQ120 | B876 (NEPTUNE) | USQ1202 4) | | | |
| | 2 1/2 | | 3600 | M48Y | PCQ1225 | B884 (NEPTUNE) | USQ1252 | | | |