



Replacement Parts List

304-054

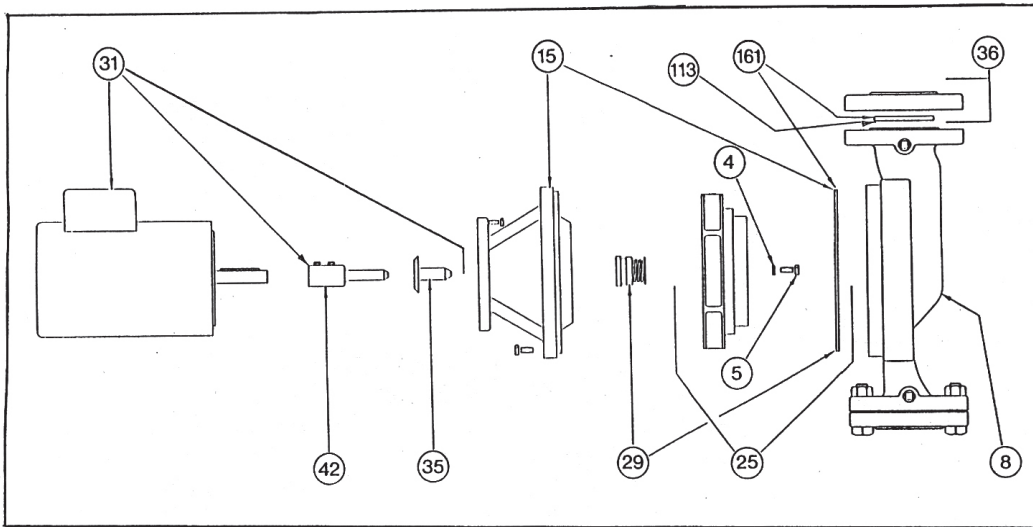
1900 Series Pumps

SUPERSEDES: June 1, 1991

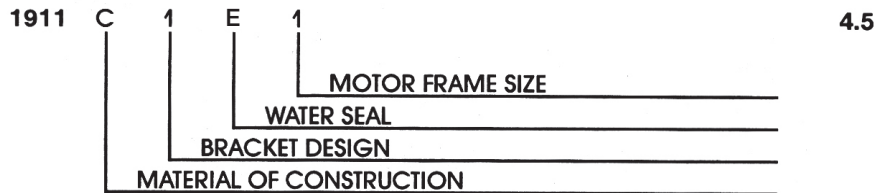
EFFECTIVE: January 1, 2010

IMPORTANT: When ordering, always specify part number, part name and complete model number of pump.
Nameplate located on bracket (item 15) of current models or on body (item 8) of older models.

REPLACEMENT PARTS FOR 1900 SERIES



SERIAL NUMBER CODE



MATERIAL OF CONSTRUCTION	
	X O O O
B	ALL BRONZE PUMP AND IMPELLER
C	CAST IRON PUMP AND BRONZE IMPELLER

BRACKET DESIGN	
	O X O O
1	CURRENT STYLE PUMPS

WATER SEAL KIT, ITEM #29	
	O O X O
E (Standard)	1600-868CRP Ceramic/Carbon/EPT (replaces 1600-846CRP, 1600-170RP, and 1600-170ERP)
S (High Temp)	1600-868SRP Sealide-C/Sealide-C/Viton (replaces 1600-846SRP and 1600-170HRP)

MOTOR FRAME	
	O O O X
1	56C FRAME ALL MOTORS

ITEM #4—IMPELLER WASHER R.P.
All 1900 Series—1600-151RP

ITEM #5—IMPELLER BOLT R.P.
All 1900 Series—1600-215RP

ITEM #8—BODY R.P.

Pump Model No.	Cast Iron	Bronze
1911	1610-001RP	1610-001BRP
1915	1614-001RP	1614-001BRP
1919	1618-004RP	1618-004BRP
1935	1634-001RP	1634-001BRP
1941	1640-002RP	1640-002BRP

ITEM #15—BRACKET R.P.

Pump Model No.	Cast Iron	Bronze
1911	1900-015RP	1900-017BRP
1915, 1935	1900-002RP	1900-019BRP
1919, 1941	1900-016RP	1900-018BRP

ITEM #25—IMPELLER R.P.*

Pump Model No.	Impeller R.P. No.
1911	1611-001BRP
1915	1615-001BRP
1919	1619-001BRP
1935	1635-001BRP
1941	1641-001BRP

*Impeller Diameter Must Be Specified.

ITEM #29—WATERSEAL R.P.

All 1900 Series

Ceramic "E"	1600-868CRP
Sealide-C "S"	1600-868SRP
Ceramic "E" (Std.)	1600-868CRP

ITEM #31—REPLACEMENT 1750 RPM MOTOR ASSEMBLY *

HP	115/208/230/60/1	200/60/3	208/230/460/60/3	3450 RPM 208/230/460/60/3
1/4	121-199	121-200	121-201	1.5 HP 138-252RP
1/3	131-192	131-193	131-194	2 HP 138-253RP
1/2	132-169	132-170	132-171	3 HP 138-249RP
3/4	133-175	133-176	133-177	5 HP 138-250RP
1	138-166	138-167	138-168	7.5 HP 138-238RP
1 1/2	138-169	138-170	138-171	
2	N/A	138-173	138-174	

*Includes Item #35 Shaft Sleeve & Item #42 Shaft Adapter.

ITEM #35—SLEEVE R.P.

All 1900 Series—1600-205RP

ITEM #36—FLANGE SET R.P.

Pump Model No.	Cast Iron	Bronze
1911, 1915	1600-031RP	1600-031BRP
1919, 1935	1600-032RP	1600-032BRP
1941	1600-174RP	1600-174BRP

ITEM #42—SHAFT ADAPTER

All 1900 Series—1900-008RP

ITEM #113—FLANGE GASKET ONLY

All 1900 Series—1600-169RP

ITEM #161—GASKET KIT

Pump Model No.	
1911, 1915, 1935	1600-050RP
1919, 1941	1618-006RP

Do it Once. Do it Right.®

TACO, INC., 1160 Cranston Street, Cranston, RI 02920 Telephone: (401) 942-8000 FAX: (401) 942-2360.
TACO (Canada), Ltd., 8450 Lawson Road, Unit #3, Milton, Ontario L9T 0J8. Telephone: 905/564-9422. FAX: 905/564-9436.

Visit our web site at: <http://www.taco-hvac.com>

Printed in USA

Copyright 2010

TACO, Inc.