

Series 4700 Vertical Multi-Stage Pump

VMS 03

SUBMITTAL



| | |
|-------------------|---------------------------------|
| JOB: _____ | REPRESENTATIVE: _____ |
| ENGINEER: _____ | ORDER NO: _____ DATE: _____ |
| CONTRACTOR: _____ | SUBMITTED BY: _____ DATE: _____ |
| | APPROVED BY: _____ DATE: _____ |

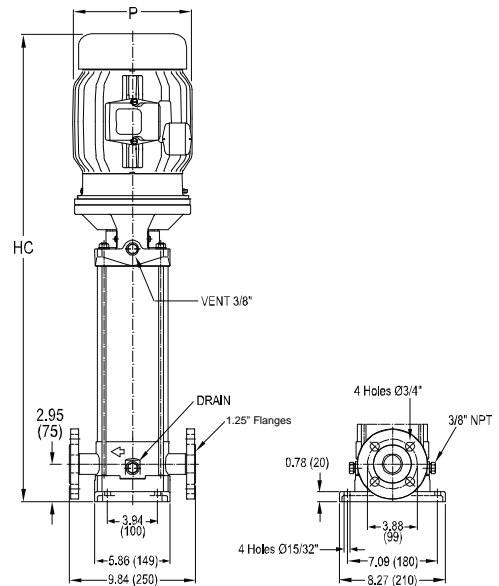
| PUMP DESIGN DATA | | | |
|--|-------------|---------------------------|---------|
| NO. OF PUMPS: | | | |
| TAG: | | | |
| CAPACITY: | USgpm (L/s) | HEAD: | ft. (m) |
| LIQUID: | | VISCOSITY: | |
| TEMPERATURE: | | SPECIFIC GRAVITY: | |
| FLANGE SIZE: SUCTION - 1.25" (32 mm) | | DISCHARGE - 1.25" (32 mm) | |
| MAXIMUM WORKING TEMPERATURE: 250°F (120°C) | | | |

| MOTOR DESIGN DATA | | | |
|--|------------|--|---|
| HP: | RPM: 3600 | | |
| FRAME SIZE: | ENCLOSURE: | <input type="checkbox"/> ODP | <input type="checkbox"/> TEFC |
| VOLTS: | HERTZ: 60 | PHASE: | <input type="checkbox"/> 1 <input type="checkbox"/> 3 |
| EFFICIENCY*: <input type="checkbox"/> NEMA Premium (12.12) | | <input type="checkbox"/> Other _____ % | |

*Fractional power, frame 56 & 1-phase motors are supplied with the standard efficiency of the Manufacturer.

| MATERIALS OF CONSTRUCTION | |
|---------------------------|------------------------------|
| FLANGE RATING | ANSI 250 |
| PUMP CASING | EN 1.4301 (AISI 304) |
| IMPELLERS | EN 1.4301 (AISI 304) |
| STAGE CASING | EN 1.4301 (AISI 304) |
| DIFFUSERS | EN 1.4301 (AISI 304) |
| PUMP SHAFT | EN 1.4401 (AISI 316) |
| JACKET TUBE | EN 1.4301 (AISI 304) |
| OTHER COMPONENTS | |
| INTERMEDIATE BEARING | TUNGSTEN CARBIDE |
| "O" RINGS | FPM |
| MOTOR PEDESTAL | Cast iron EN-GJL-200-EN 1561 |
| PUMP BASE | Cast iron EN-GJL-200-EN 1561 |
| MECHANICAL SEAL FACES | Silicon carbide/Carbon/FPM |

| REMARKS |
|---------|
| |



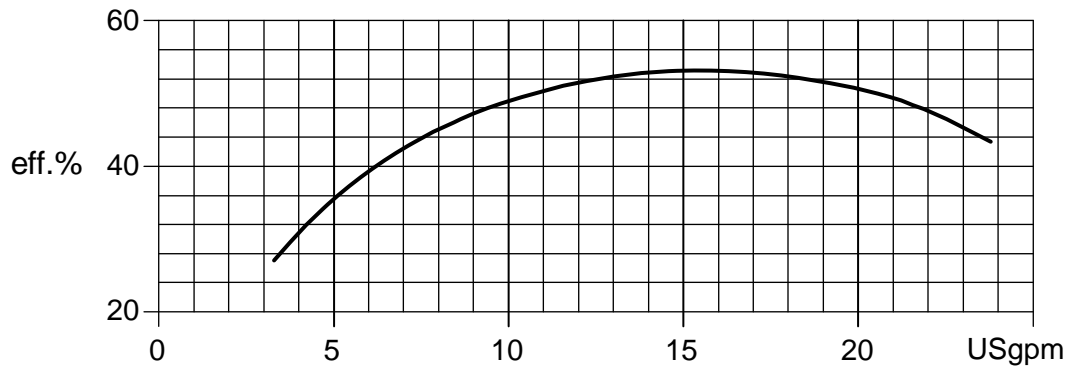
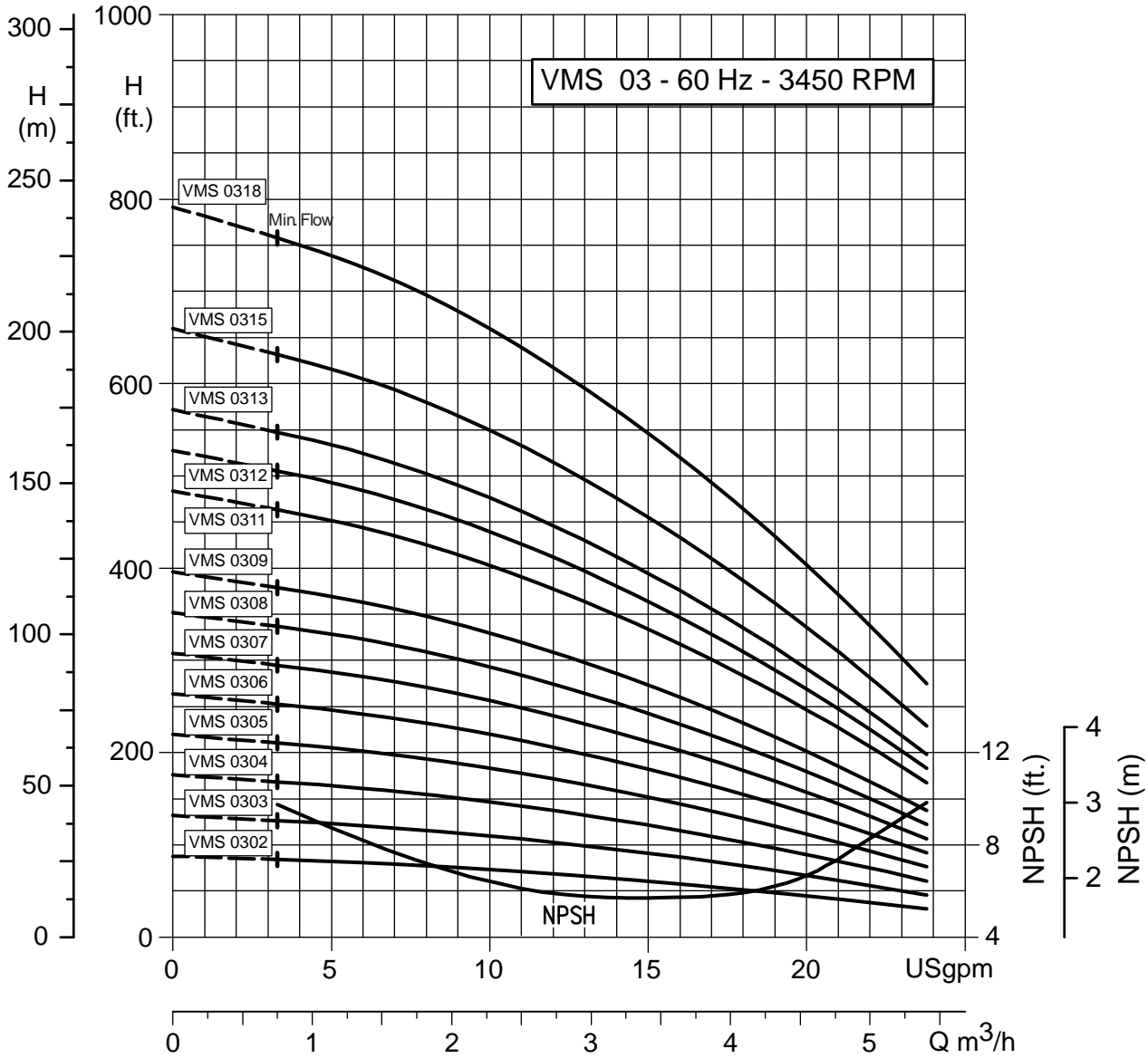
| PUMP SIZE | hp | NEMA FRAME | MWP* | DIMENSIONS | | WEIGHT lbs. (kg) |
|-----------|------|------------|------|--------------|-------------|---------------------|
| | | | | HC | P | |
| VMS 0302 | 0.5 | 56C | 232 | 21.56 (548) | 7.25 (184) | 57 (26) |
| VMS 0303 | 0.75 | 56C | | 23.89 (607) | 7.25 (184) | 60 (27) |
| VMS 0304 | 1 | 56C | | 25.53 (648) | 7.25 (184) | 63 (29) |
| VMS 0305 | 1.5 | 143TC | | 25.90 (658) | 8.63 (219) | 71 (32) |
| VMS 0306 | 1.5 | 143TC | | 26.73 (679) | 8.63 (219) | 74 (34) |
| VMS 0307 | 2 | 145TC | | 28.09 (714) | 8.63 (219) | 83 (38) |
| VMS 0308 | 2 | 145TC | | 28.92 (735) | 8.63 (219) | 83 (38) |
| VMS 0309 | 3 | 145TC | | 30.50 (775) | 8.63 (219) | 89 (40) |
| VMS 0311 | 3 | 145TC | 370 | 32.15 (817) | 8.63 (219) | 90 (41) |
| VMS 0312 | 3 | 145TC | | 32.98 (838) | 8.63 (219) | 90 (41) |
| VMS 0313 | 3 | 145TC | | 34.20 (869) | 8.63 (219) | 93 (42) |
| VMS 0315 | 5 | 184TC | | 39.44 (1002) | 10.38 (264) | 127 (58) |
| VMS 0318 | 5 | 184TC | | 41.93 (1065) | 10.38 (264) | 135 (61) |

All dimensions are in inches (mm) and are approximate.

*Maximum Working Pressure



PERFORMANCE CURVES



S. A. Armstrong Limited
 23 Bertrand Avenue
 Toronto, Ontario
 Canada, M1L 2P3
 T: 416-755-2291
 F: 416-759-9101

Armstrong Pumps Inc.
 93 East Avenue
 North Tonawanda, New York
 U.S.A. 14120-6594
 T: 716-693-8813
 F: 716-693-8970

Armstrong Integrated Limited
 Wenlock Way
 Manchester
 United Kingdom, M12 5JL
 T: +44 (0) 8444 145 145
 F: +44 (0) 8444 145 146



© S.A. Armstrong Limited 2011