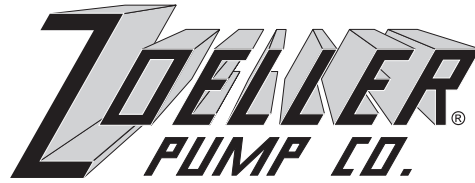


"QUALITY PUMPS SINCE 1939"



SECTION: 6.10.403

FM1531

1207

Supersedes

0906

Product information presented here reflects conditions at time of publication. Consult factory regarding discrepancies or inconsistencies.

MAIL TO: P.O. BOX 16347 • Louisville, KY 40256-0347  
SHIP TO: 3649 Cane Run Road • Louisville, KY 40211-1961  
(502) 778-2731 • 1 (800) 928-PUMP • FAX (502) 774-3624

visit our web site:  
[www.zoeller.com](http://www.zoeller.com)

## REPLACEMENT PARTS LIST FOR GRINDER MODELS:

**E820 NONAUTOMATIC 230V 1PH**  
**I820 NONAUTOMATIC 200V 1PH**  
**WD820 AUTOMATIC w/wired float switch 230V 1PH**  
**WH820 AUTOMATIC w/wired float switch 200V 1PH**

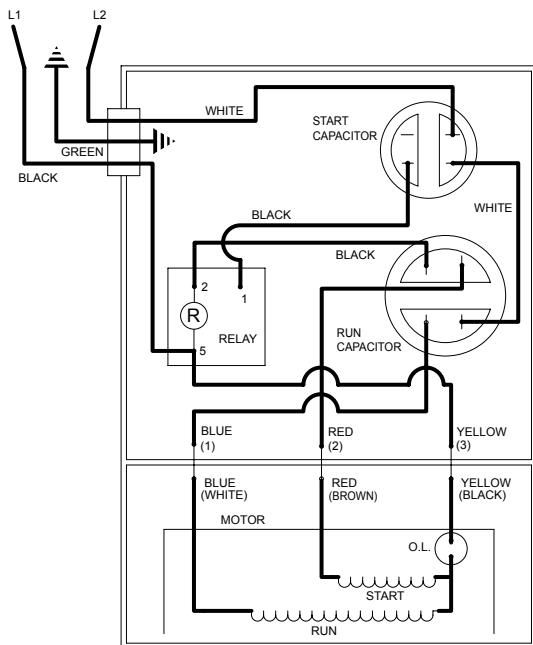
Consult factory for all other models

### TO ORDER REPLACEMENT PARTS:

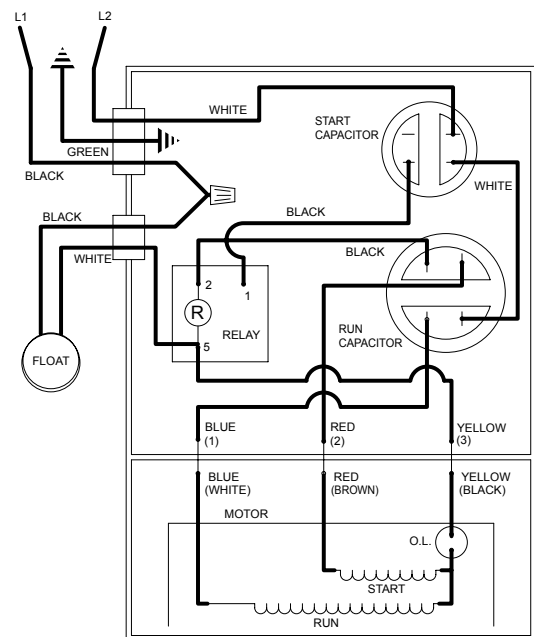
#### PLEASE FURNISH THE FOLLOWING INFORMATION:

- Model Number.
- Part Number of Pump.
- Part Number and Description of part.

**NOTE: NEW WIRING FOR OLDER REVISION PUMPS. REWIRE PUMP JUNCTION BOX CHAMBER (TOP CAP) PER APPROPRIATE WIRING DIAGRAM BELOW.**



010443  
WIRING DIAGRAM FOR MODELS  
"E820" All Revisions and  
"I820" All Revisions  
9/96 thru Current



010415  
WIRING DIAGRAM FOR MODELS  
"WD820" All Revisions and  
"WH820" All Revisions  
9/96 thru Current

**REPLACEMENT PARTS LIST FOR MODELS "E820" and "I820".**

See back page for illustration.

REF NO.	DESCRIPTION	QTY	NOTES	MODELS:				I820-A	I820-B	I820-C	I820-D
				E820-A	E820-B	E820-C	E820-D				
				9/96 thru 12/97	1/98 thru 8/02	9/02 thru 4/06	5/06 thru Current	9/96 thru 12/97	1/98 thru 8/02	9/02 thru 4/06	5/06 thru Current
1	• HANDLE	1		217069	217069	217069	217069	217069	217069	217069	217069
2	COVER & CORD 200/230V/1PH/NONAUTO/"820"	1	3	010836	010836	015608	015608	010838	010838	015609	015609
3	COVER-MACH & HANDLE ASM	1	3	010835	010835	015612	015612	010835	010835	015612	015612
4	SWITCH,FLT-TERM & SEAL "820"	0		N/A	N/A	N/A	N/A	N/A	N/A	N/A	N/A
5	SEAL,CORD-FLOAT SWITCH	0		N/A	N/A	N/A	N/A	N/A	N/A	N/A	N/A
6	CORD TERM&SEAL	1	3	010840	010840	015614	015614	010841	010841	015615	015615
7	• SEAL,CORD-ASM&STR RLF	1	3	004375	004375	015634	015634	004375	004375	015634	015634
8	• GASKET,CASE/COVER	1		001011	001011	001011	001011	001011	001011	001011	001011
9	• WIRE PKG (6 WIRES)	1		010833	010833	010833	010833	010833	010833	010833	010833
10	CAPACITOR-START & CLAMP ASM.	1		010829	010829	010829	010829	010829	010829	010829	010829
11	CAPACITOR-RUN & CLAMP ASM	1		010830	010830	010830	010830	010830	010830	010830	010830
12	RELAY,VOLTAGE SENSING	1		010410	014601	014601	014601	010410	014601	014601	014601
13	• PLUG,TEST	2		015023	015023	015023	015023	015023	015023	015023	015023
14	• SEAL,THRU WALL TERM	3		003402	003402	003402	003402	003402	003402	003402	003402
15	HOUSING,MTR-&STR	1	4	010444	010444	010444	018231	010449	010449	010449	018232
16	BEARING,SLEEVE-BRONZE OILITE	1		001012	001012	001012	N/A	001012	001012	001012	N/A
	• BEARING,6201			N/A	N/A	N/A	006703	N/A	N/A	N/A	006703
17	KEY	1		007775	011711	011711	011711	007775	011711	011711	011711
18	ROTOR & BRG ASM/1PH "820"	1		010831	010831	010831	018230	010831	010831	010831	018230
19	• BEARING,7303	1		009861	009861	009861	009861	009861	009861	009861	009861
20	• SEAL,MTR HSG	1		001014	001014	001014	001014	001014	001014	001014	001014
21	• OIL,DIELECTRIC	1		010839	010839	010839	018233	010839	010839	010839	018233
22	ADAPTER-MACH	1		001003	001003	001003	001003	001003	001003	001003	001003
23	• SEAL,SHAFT	1		002430	002430	002430	002430	002430	002430	002430	002430
24	WASHER,SUPPORT-SS	1		010863	010863	010863	010863	010863	010863	010863	010863
25	COLLAR,SHAFT	1		010409	010409	010409	010409	010409	010409	010409	010409
26	IMPELLER-MACH "820"	1		010402	010402	010402	010402	010402	010402	010402	010402
27	HOUSING,PUMP-MACH "820"	1		010400	010400	010400	010400	010400	010400	010400	010400
28	CUTTER & DISC ASM./"820"	1		010832	010832	010832	010832	010832	010832	010832	010832
29	SHIM SET FOR 820/840 GRINDERS	1		012632	012632	012632	012632	012632	012632	012632	012632
30	WASHER,RETAINING	1		008533	008533	008533	008533	008533	008533	008533	008533
31	GUARD,CUTTER-PLASTIC	1		008528	008528	008528	008528	008528	008528	008528	008528
32	CONNECTOR,WIRENUT 14-16GA	0		N/A	N/A	N/A	N/A	N/A	N/A	N/A	N/A
33	• SCREW,.25-20X.75" SH CAP SS.	3		007768	007768	007768	007768	007768	007768	007768	007768
34	• SCREW,.25-20 X .75LG HH SS (NYLOCK)	1		009545	009545	009545	009545	009545	009545	009545	009545
35	• SCREW,#10-24X.875-FLT SH CAP SS.	3		007761	007761	007761	007761	007761	007761	007761	007761
36	• SCREW,.313-18 X 1" HH CAP-SS	4		002608	002608	002608	002608	002608	002608	002608	002608
37	• SCREW,.25-20X1" HHM-S.S.	4		007790	007790	007790	007790	007790	007790	007790	007790
38	• SCREW,.25-20X.75 HHM-SS/INDENTED/UNSLOTTED	4		001916	001916	001916	001916	001916	001916	001916	001916
39	• SCREW,#6-32X.25RHM SL TC STLGR	5		001877	001877	001877	001877	001877	001877	001877	001877
40	• SPRING,BEARING PRELOAD	1		N/A	N/A	N/A	017192	N/A	N/A	N/A	017192
41	• WASHER,FLAT-SS .25 STANDARD	3		004480	004480	004480	004480	004480	004480	004480	004480
42	• SCREW,#6-32X.375RHM SL TC ZINC PLATED	1		019421	019421	019421	019421	019421	019421	019421	019421
□	REBUILD KIT E & I "820/.820"	1		010844	010844	015804	018234	010844	010844	015804	018234

- Items included in Rebuild Kit.
- Not Shown in Illustration.

**NOTES:**

- 1) See FM1267 Price Sheet for listing of parts prices.
- 2) "N/A" indicates, not applicable.
- 3) If an "X" follows Model No., or Date Mfg. on brass ID tag, consult factory for ordering of this part.
- 4) Housing, MTR & Stator (Item 15) is preassembled at factory and must be replaced as a unit. Stator is permanently attached to the Motor Housing. Plug (Item 13) and Seal, thru Wall Term. (Item 14) and Bearing (Item 16) are replaceable.

**REPLACEMENT PARTS LIST FOR MODELS "WD820" and "WH820".**

See back page for illustration.

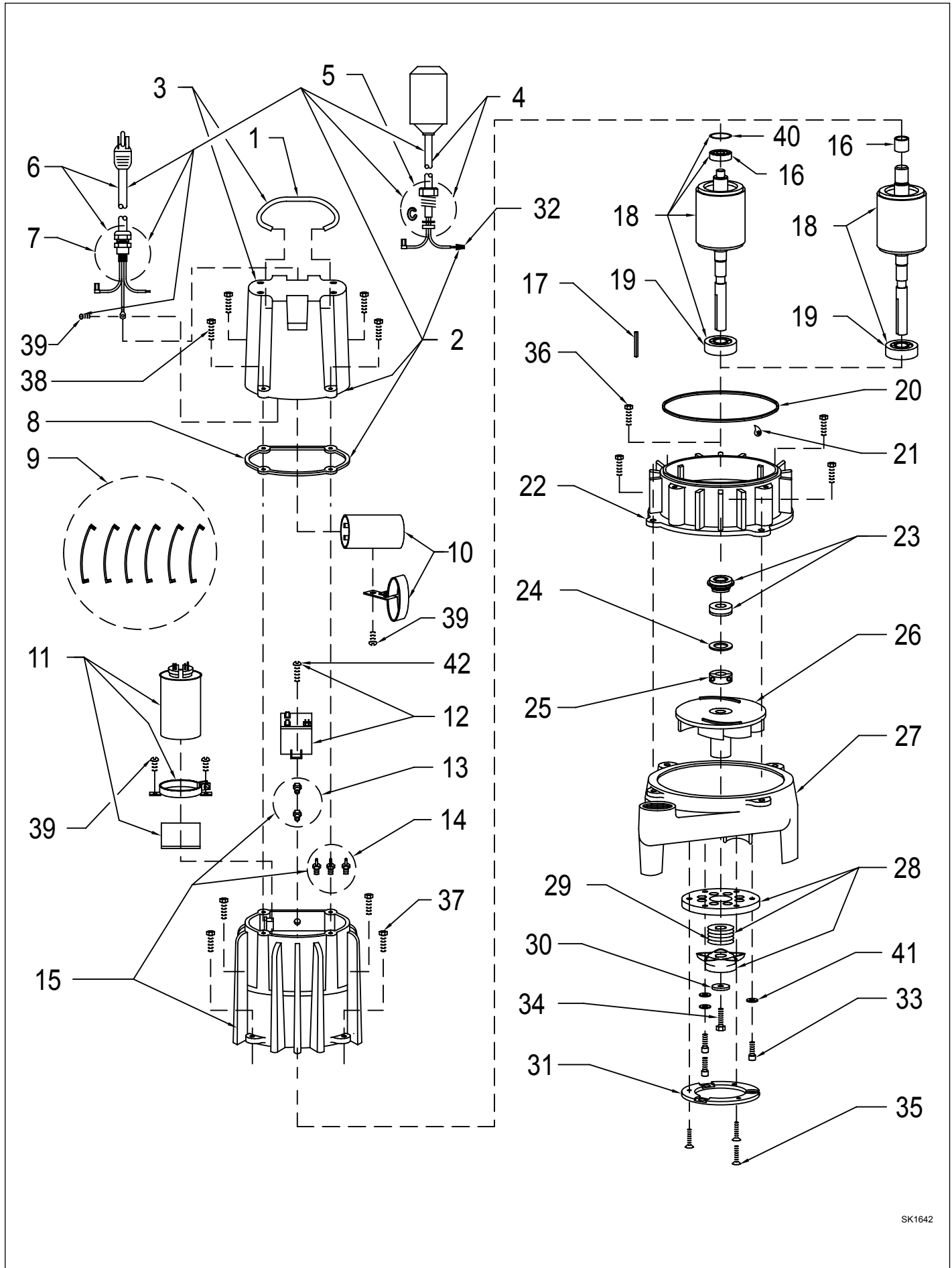
MODELS:				WD820-A	WD820-B	WD820-C	WD820-D	WH820-A	WH820-B	WH820-C	WH820-D	WH820-E
REF NO.	DESCRIPTION	QTY	NOTES	9/96 thru 12/97	1/98 thru 8/02	9/02 thru 4/06	5/06 thru Current	9/96 thru 12/97	1/98 thru 10/98	11/98 thru 8/02	9/02 thru 4/06	5/06 thru Current
1	• HANDLE	1		217069	217069	217069	217069	217069	217069	217069	217069	217069
2	COVER,CORD & FLT	1		010825	010825	015610	015610	010837	010837	010837	015611	015611
3	COVER-MACH & HANDLE ASM	1	3	010826	010826	015613	015613	010826	010826	010826	015613	015613
4	SWITCH,FLT-TERM & SEAL "820"	1	3	010827	010827	010827	010827	010827	010827	011880	011880	011880
5	• SEAL,CORD-FLOAT SWITCH	1		011065	011065	011065	011065	011065	011065	011071	011071	011071
6	CORD TERM & SEAL	1	3	010828	010828	015632	015632	010842	010842	010842	015633	015633
7	• SEAL,CORD-ASM&STR RLF	1	3	004375	004375	015634	015634	004375	004375	004375	015634	015634
8	• GASKET,CASE/COVER	1		001011	001011	001011	001011	001011	001011	001011	001011	001011
9	• WIRE PKG (6 WIRES)	1		010833	010833	010833	010833	010833	010833	010833	010833	010833
10	CAPACITOR-START & CLAMP ASM.	1		010829	010829	010829	010829	010829	010829	010829	010829	010829
11	CAPACITOR-RUN & CLAMP ASM	1		010830	010830	010830	010830	010830	010830	010830	010830	010830
12	RELAY,VOLTAGE SENSING	1		010410	014601	014601	014601	010410	010410	014601	014601	014601
13	• PLUG,TEST	2		015023	015023	015023	015023	015023	015023	015023	015023	015023
14	• SEAL,THRU WALL TERM	3		003402	003402	003402	003402	003402	003402	003402	003402	003402
15	HOUSING,MTR-&STR	1	4	010444	010444	010444	018231	010449	010449	010449	010449	018232
16	BEARING,SLEEVE-BRONZE OILITE	1		001012	001012	001012	N/A	001012	001012	001012	001012	N/A
	• BEARING,6201			N/A	N/A	N/A	006703	N/A	N/A	N/A	N/A	006703
17	KEY	1		007775	011711	011711	011711	007775	011711	011711	011711	011711
18	ROTOR & BRG ASM/1PH "820"	1		010831	010831	010831	018230	010831	010831	010831	010831	018230
19	• BEARING,7303	1		009861	009861	009861	009861	009861	009861	009861	009861	009861
20	• SEAL,MTR HSG	1		001014	001014	001014	001014	001014	001014	001014	001014	001014
21	• OIL,DIELECTRIC	1		010839	010839	010839	018233	010839	010839	010839	010839	018233
22	ADAPTER-MACH	1		001003	001003	001003	001003	001003	001003	001003	001003	001003
23	• SEAL,SHAFT	1		002430	002430	002430	002430	002430	002430	002430	002430	002430
24	WASHER,SUPPORT-SS	1		010863	010863	010863	010863	010863	010863	010863	010863	010863
25	COLLAR,SHAFT	1		010409	010409	010409	010409	010409	010409	010409	010409	010409
26	IMPELLER-MACH "820"	1		010402	010402	010402	010402	010402	010402	010402	010402	010402
27	HOUSING,PUMP-MACH "820"	1		010400	010400	010400	010400	010400	010400	010400	010400	010400
28	CUTTER & DISC ASM/"820"	1		010832	010832	010832	010832	010832	010832	010832	010832	010832
29	SHIM SET FOR 820/840 GRINDERS	1		012632	012632	012632	012632	012632	012632	012632	012632	012632
30	WASHER,RETAINING	1		008533	008533	008533	008533	008533	008533	008533	008533	008533
31	GUARD,CUTTER-PLASTIC	1		008528	008528	008528	008528	008528	008528	008528	008528	008528
32	• CONNECTOR,WIRENUT 14-16GA	1		003753	003753	003753	003753	003753	003753	003753	003753	003753
33	• SCREW,.25-20X.75"SH CAP SS.	3		007768	007768	007768	007768	007768	007768	007768	007768	007768
34	• SCREW,.25-20 X .75LG HH SS (NYLOCK)	1		009545	009545	009545	009545	009545	009545	009545	009545	009545
35	• SCREW,#10-24X.875-FLT SH CAP SS.	3		007761	007761	007761	007761	007761	007761	007761	007761	007761
36	• SCREW,.313-18 X 1"HH CAP-SS	4		002608	002608	002608	002608	002608	002608	002608	002608	002608
37	• SCREW,.25-20X1" HHM-S.S.	4		007790	007790	007790	007790	007790	007790	007790	007790	007790
38	• SCREW,.25-20X.75 HHM-SS/ INDENTED/UNSLOTTED	4		001916	001916	001916	001916	001916	001916	001916	001916	001916
39	• SCREW,#6-32X.25RHM SL TC STLGR	5		001877	001877	001877	001877	001877	001877	001877	001877	001877
40	• SPRING,BEARING PRELOAD	1		N/A	N/A	N/A	017192	N/A	N/A	N/A	N/A	017192
41	• WASHER,FLAT-SS .25 STANDARD	3		004480	004480	004480	004480	004480	004480	004480	004480	004480
42	• SCREW,#6-32X.375RHM SL TC ZINC PLATED	1		019421	019421	019421	019421	019421	019421	019421	019421	019421
☐	REBUILD KIT WD & WH "820/6820"	1		010843	010843	015803	018234	010843	010843	010843	015803	018234

• Items included in Rebuild Kit. ☐ Not Shown in Illustration.

**NOTES:**

- 1) See FM1267 Price Sheet for listing of parts prices.
- 2) "N/A" indicates, not applicable.
- 3) If an "X" follows Model No., or Date Mfg. on brass ID tag, consult factory for ordering of this part.
- 4) Housing, MTR & Stator (Item 15) is preassembled at factory and must be replaced as a unit. Stator is permanently attached to the Motor Housing. Plug (Item 13) and Seal, thru Wall Term. (Item 14) and Bearing (Item 16) are replaceable.

# REPLACEMENT PARTS ILLUSTRATION FOR 820 - ALL MODELS



SK1642