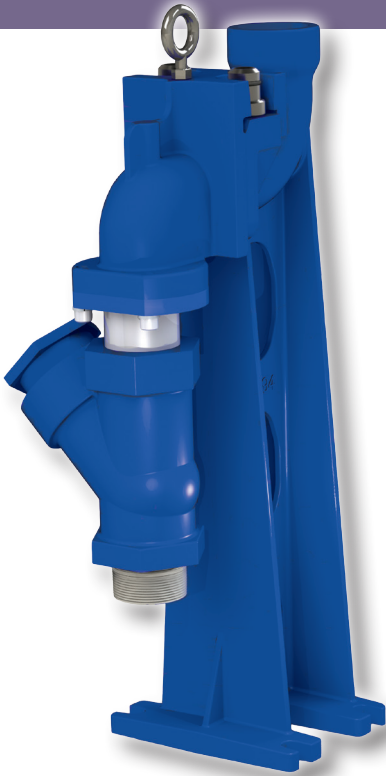
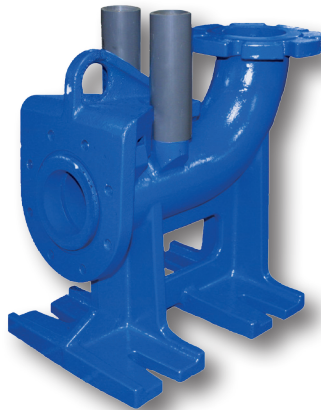


Break Away Fittings (BAF)



1.25" - 3.00"
Break Away Fittings



4" Non-Clog
Break Away Fitting

4" Non-Clog Break Away Fittings

Model	Part No.	Weight
BAF-4x4	128281	161 lbs.
BAF-4x6	128280	169 lbs.

Features: (4")

- Designed to provide easy access to the non-clog horizontal pumps

Features: (1.25" - 3")

- Designed to provide easy access to all Barnes 1.25" thru 3" submersible pumps
- Available with check valve
- Available in non-spark design with Bronze moveable elbow to prevent sparking

Applications:

- Allows the submersible pump to be installed or removed without requiring personnel to enter the wet well

1.25" - 3.00" Break Away Fittings - Standard

Model	Part No.	Weight	Pump Discharge	Riser Pump
BAF-1212	127300	45 lbs.	1.25"	1.25"
BAF-1220	127301	45 lbs.	1.25"	2.00"
BAF-2020	127302	45 lbs.	2.00"	2.00"
BAF-2030	127306	61 lbs.	2.00"	3.00"
BAF-3030	127304	62 lbs.	3.00"	3.00"

1.25" - 3.00" Break Away Fittings - Standard & Non-Sparking with Check Valve

Model	Part No.	Weight	Pump Discharge	Riser Pump
BAF-1212CV	127307	46 lbs.	1.25"	1.25"
BAF-1220CV	127308	46 lbs.	1.25"	2.00"
BAF-2020CV	127309	46 lbs.	2.00"	2.00"
BAF-1212CVNS	127310	48 lbs.	1.25"	1.25"
BAF-1220CVNS	127313	48 lbs.	1.25"	2.00"
BAF-2020CVNS	127315	48 lbs.	2.00"	2.00"

'CV' Designates check valve.
'NS' Designates non-sparking.