

# MYERS® MPB Series Serviceable High Pressure Booster Pumps

The MPB Booster Pumps are the most durable booster pump available. The proven SignaSeal™ floating impeller design minimizes thrust loads allowing for continuous operation without damage to motor bearings, mechanical seal or pump hydraulic components.

## APPLICATIONS

■ Car wash, filtration and reverse osmosis, residential, commercial or agricultural pressure washing, booster and spray systems, HVAC, general purpose pumping.

## SPECIFICATIONS

**Max. Inlet Pressure** – 80 PSI

**Max. Working Pressure** – 315 PSI

**Max. Suction Lift** – 15 feet

**Maximum Limits** – Prolonged use with liquids above 140° F is not recommended.

**Discharge** – MPB Series: cast iron

**Motor Adapter and Base** – MPB Series: cast iron

**Shell** – 300 series stainless steel

**Impeller** – Acetal

**Diffuser** – Polycarbonate

**Shaft** – 300 series stainless steel

**O-Rings** – Buna-N

**Mechanical Seal** – Carbon/ceramic, Buna-N



## FEATURES

**Pump and Motor Shaft** – Stainless steel for maximum corrosion resistance; one-piece threaded shaft for positive impeller drive.

**Peak Performance at Every Stage** – Staging system uses independent floating impellers for superior sand handling.

**Balanced Rotor** – Die cast under high pressures for uniform performance and greater efficiency; dynamically balanced.

**Acetal Impellers** – Precision-molded for perfect balance... ultra-smooth for highest performance and efficiency.

**Precision Molded Diffusers** – Superior performance with high resistance to corrosion and abrasion.

**Heavy-duty Ball Bearings** – Shielded, permanently lubricated bearings, extensively tested to ensure extended life and smooth, quiet operation.

**Myers: The Proven Leader** – The industry leader in booster pumps offers solutions in a broad range of commercial and OEM applications.

In order to provide the best products possible, specifications are subject to change.

# MYERS® MPB Series Serviceable High Pressure Booster Pumps

ORDERING INFORMATION								
Catalog Number	GPM	HP	Phase	Stages	Pipe Tapping Sizes		Motor Voltage	Shipping* Wt. (lbs.)
					Inlet	Outlet		
7MPB50	7	1/2	1	9	3/4"	3/4"	115/230	48
7MPB75		3/4	1	12	3/4"	3/4"	115/230	48
7MPB100		1	1	16	3/4"	3/4"	115/230	51
10MPB50	10	1/2	1	6	3/4"	3/4"	115/230	45
10MPB75		3/4	1	8	3/4"	3/4"	115/230	46
10MPB100		1	1	10	3/4"	3/4"	115/230	50
10MPB150		1-1/2	1	14	3/4"	3/4"	115/230	58
10MPB200		2	1	16	3/4"	3/4"	115/230	63
20MPB100	20	1	1	7	1"	1"	115/230	49
20MPB150		1-1/2	1	9	1"	1"	115/230	57
20MPB200		2	1	11	1"	1"	115/230	62
20MPB300		3	1	15	1"	1"	208-230	59
30MPB100	30	1	1	5	1-1/4"	1-1/4"	115/230	47
30MPB150		1-1/2	1	6	1-1/4"	1-1/4"	115/230	54
30MPB200		2	1	7	1-1/4"	1-1/4"	115/230	57
30MPB300		3	1	11	1-1/4"	1-1/4"	208-230	59

\*Length and weight are approximate.

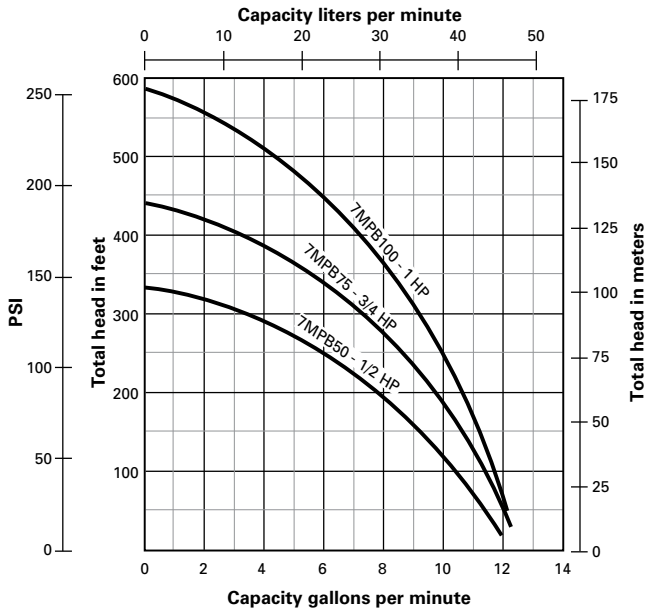
NOTE: ODP motor is standard, for TEFC motors, contact Customer Service.

ORDERING INFORMATION - ACCESSORIES		
Pkg. No.	Description	Approx. Wt. Lbs.
<b>SUCTION</b>		
83	Suction hose - 3/4" 150 PSI hose, 6 ft. section with two (2) female hose fittings	3
85	Two (2) garden hose/NPT adapters - 3/4" NPT male to 3/4" garden hose male	3
96	Vacuum relief valve - 1/2" NPT	2
<b>150 PSI RATED* DISCHARGE</b>		
84	Discharge hose - 3/4" 150 PSI hose, 25 ft. section with male and female garden hose fittings	10
86	High pressure pistol grip nozzle with three (3) nozzles (No. 56, 50 and 49)	2
<b>315 PSI RATED* DISCHARGE</b>		
162	25' of 1" ID hose with 3/4" male and female hose fittings 315 PSI rating	15
194	High pressure pistol grip nozzle with three (3) nozzles (No. 56, 50 and 49) rated for 500 PSI	2

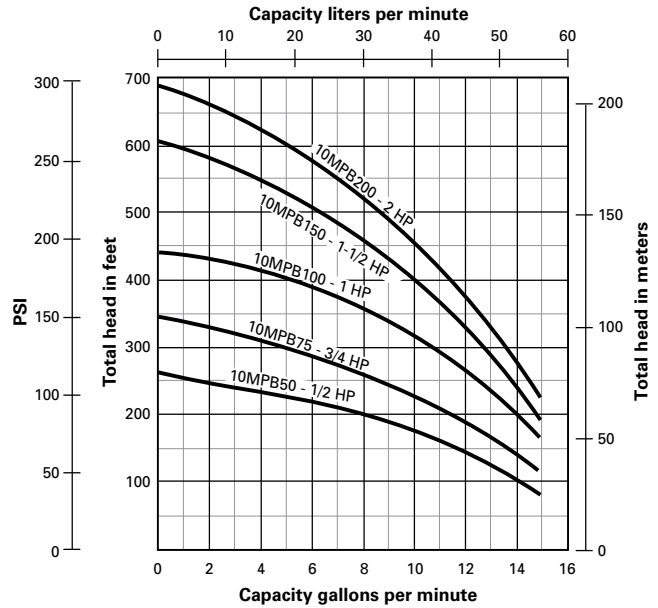
\*To select proper discharge accessories for your pump, add incoming pressure to pump output pressure, to determine total discharge pressure.  
 Example: Incoming pressure 20 PSI + pump output pressure (HP7C at 0 GPM, 300')  
 87 PSI = Total 150 PSI at discharge = 150 PSI rated discharge accessories

# MYERS® MPB Series Serviceable High Pressure Booster Pumps

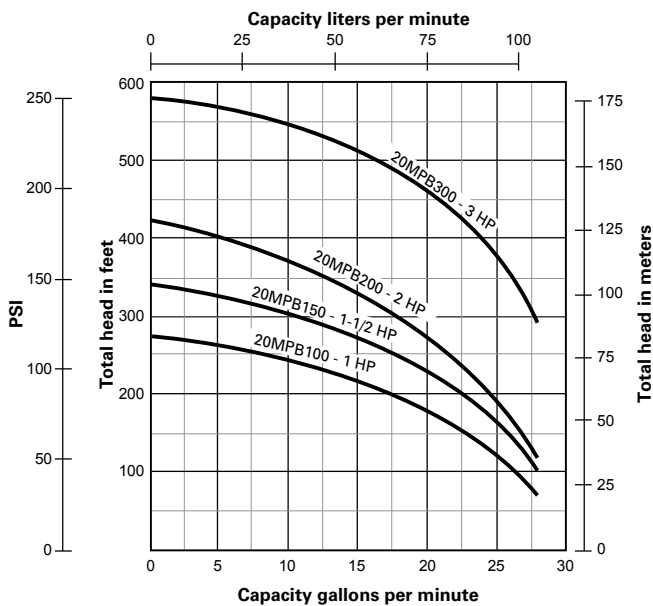
**PUMP PERFORMANCE - 7 GPM**



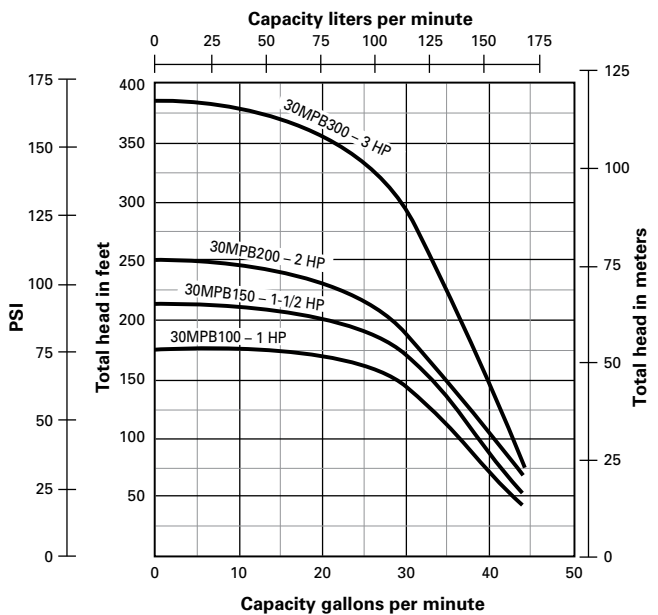
**PUMP PERFORMANCE - 10 GPM**



**PUMP PERFORMANCE - 20 GPM**

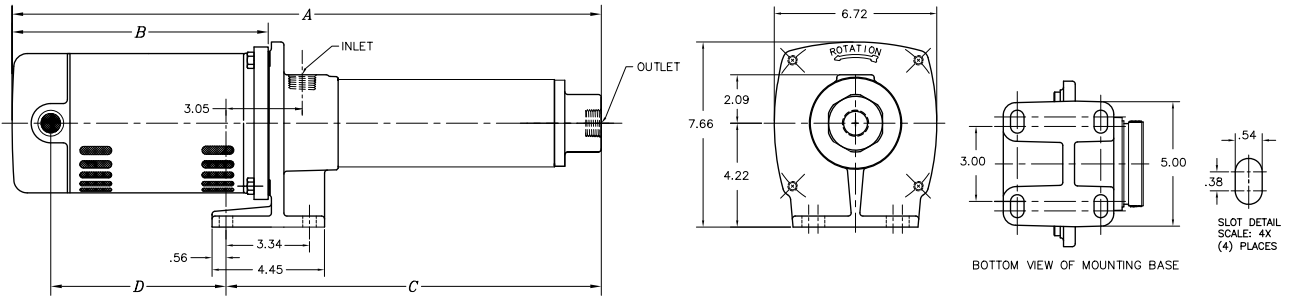


**PUMP PERFORMANCE - 30 GPM**



# MYERS® MPB Series Serviceable High Pressure Booster Pumps

## OUTLINE DIMENSIONS



Catalog Number	HP	Dimensions in inches			
		A	B	C	D
7MPB50	1/2	24.60	10.38	15.76	6.88
7MPB75	3/4	27.22	10.38	18.39	7.47
7MPB100	1	32.23	11.88	21.89	8.88
10MPB50	1/2	23.19	11.60	13.13	8.63
10MPB75	3/4	25.31	11.97	14.88	9.00
10MPB100	1	28.12	13.03	16.63	10.06
10MPB150	1-1/2	32.07	13.47	20.14	10.50
10MPB200	2	34.13	13.78	21.89	10.81
20MPB100	1	26.02	11.88	15.68	8.88
20MPB150	1-1/2	29.84	13.47	17.91	10.50
20MPB200	2	32.38	13.78	20.14	10.81
20MPB300	3	36.80	14.05	24.47	11.12
30MPB100	1	25.08	11.88	14.92	8.69
30MPB150	1-1/2	27.26	12.63	16.35	9.44
30MPB200	2	28.49	12.42	17.79	9.47
30MPB300	3	35.86	14.05	23.53	11.12



USA 293 WRIGHT STREET, DELAVAN, WI 53115 WWW.FEMEYERS.COM PH: 888-987-8677 ORDERS FAX: 800-426-9446  
 CANADA 269 TRILLIUM DRIVE, KITCHENER, ONTARIO, CANADA N2G 4W5 PH: 519-748-5470 ORDERS FAX: 888-606-5484  
 Because we are continuously improving our products and services, Pentair reserves the right to change specifications without prior notice.