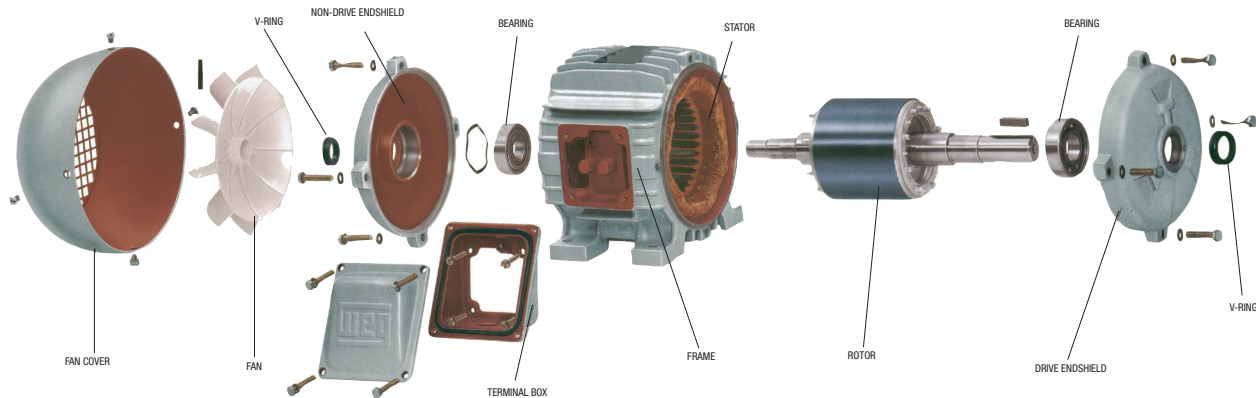


WEG Mod Shop Modification Program, Special Features & Spare Parts



WEG MOD SHOP MODIFICATION PROGRAM, SPECIAL FEATURES AND SPARE PARTS

The WEG Mod Shop modification program is the fast way to get your customized motor from WEG warehouses across the country.

1. Modifications can be completed in 2 to 5 working days (excluding holidays and weekends) subject to availability of stock motors and parts.
2. "Expedite" services can be requested. Please call for information on extra charges (if any).
3. Modified motors may not be returned.
4. If in order to process requested modifications parts must be moved from one to another location, freight costs will be added to the price. WEG will advise the costs prior to the order acceptance for customer approval.
5. WEG maintains most of the popular customized motors in stock. Before ordering a modification of a standard off-the-shelf motor, ask your WEG Sales Representative for out-of-stock availability.

ADD-ON™
MODIFICATIONS



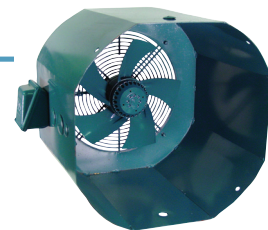
ADD-ON PRICES ONLY INCLUDE MATERIAL AND LABOR. If certain parts need to be transferred from one location to other freight costs will be added to the final price.



1) BEARINGS

NEMA FRAME SERIES	48	56	-	14 OT	180T	210T	250T	280T
IEC Frame Series	-	-	63-80	90	100/112	132	160	180
Ball to Roller (IV, VI, VIII P.) D.E.: - WEG Mod Shop						850	850	850
ZZ Bearings (Double shielded):								
Factory Build Adder		14	14	14	30	50	96	321
WEG Mod Shop				295	320	428	410	540
2 RS Bearing (D.E. and N.D.E.)								
Factory Build Adder		38	38	38	61	67	207	973
WEG Mod Shop				310	336	449	431	567
High Temperature or high ambient grease	72	72	72	72	72	101	101	133
Factory Build Adder								
WEG Mod Shop	394	394	394	394	394	438	438	438

NEMA FRAME SERIES	320T	360T	400T	440T	500	580
IEC Frame Series	200	225	250	280	315	355
Ball to Roller (IV, VI, VIII P.) D.E.: - WEG Mod Shop	850	1,000	1,287	2,165	2,250	2,250
ZZ Bearings (Double shielded):						
Factory Build Adder	632					
WEG Mod Shop	662	776	1,015	1,700	1,700	1,700
2 RS Bearing (D.E. and N.D.E.)						
Factory Build Adder	973					
WEG Mod Shop	695	815	1,066	1,785	1,785	1,785
High Temperature or high ambient grease	133	174	174	174	174	274
Factory Build Adder						
WEG Mod Shop	504	504	680	680	680	1,095



2) COOLING

NEMA FRAME SERIES	48	56	-	140T	180T	210T	250T	280T	320T	360T	400T	440T	500	580
IEC FRAME SERIES			63-80	90	100/112	132	160	180	200	225	250	280	315	355
Fan Material : - Aluminum				64	110	118	132	151	175					
Factory Build Adder														
WEG Mod Shop				364	469	489	519	566	618					
Spare Part (kit)				96	165	178	197	228	263					
Fan Material : - Cast Iron				34	50	61	79	107	112	185	185	216	300	527
Factory Build Adder														
WEG Mod Shop				296	332	358	395	463	473	640	640	709	961	1,499
Spare Part (kit)				51	72	91	117	160	167	278	278	324	450	790
Fan Material : - Bronze				255	570	926	1,143	1,598	1,614	2,811	2,811	2,811	2,811	3,179
Factory Build Adder														
WEG Mod Shop				824	1,303	1,671	2,172	3,860	3,895	6,677	6,677	6,677	6,677	7,673
Spare Part (kit)				384	639	956	1,283	2,398	2,421	4,218	4,218	4,218	4,218	4,768
Forced Ventilation : - Blower cooling	ON REQUEST													
Factory Build Adder : IP54														
TEAO				58	87	101	104	189	189	396	396	407	470	557
Factory Build Adder														
Drip Cover		57		59	63	88	105	151	178	205	205	251	251	354
Factory Build Adder														
WEG Mod Shop		155	155	155	166	186	215	258	286	335	355			
Spare Part (kit)		85		89	95	133	159	228	267	308	308	376	376	531
Blower Kit for IDM Motors				1,622	1,633	1,749	1,846	2,199	2,811	2,817	3,610	3,610	5,059	
Spare Part (kit)														
Encoder Kit for IDM Motors				2,780	2,799	2,998	3,014	3,080	3,081	3,131	3,131	3,135	3,135	
Spare Part (kit)														
Cast Iron Fan Cover				85	93	125								
Spare Part (kit)														

MODIFICATIONS / SPECIAL FEATURES / SPARE PARTS



ADD-ON PRICES ONLY INCLUDE MATERIAL AND LABOR. If certain parts need to be transferred from one location to other freight costs will be added to the final price.



3) DEGREE OF PROTECTION (Factory Built Pricing) FOR WEG MOD SHOP PROGRAM, PLEASE CONTACT WEG

NEMA FRAME SERIES	48	56	-	140T	180T	210T	250T	280T	320T	360T	400T	440T	500	500
IEC FRAME SERIES	-	-	63-80	90	100/112	132	160	180	200	225	250	280	315	355
With Lip Seal			33	33	58	76	95	113	132	151	175	213	249	502
With Oil Seal			55	55	85	104	112	133	143	171	200	231	268	
With Labyrinth seal or Nilos Ring			196	196	220	220	299	315	354	463	511	511	579	1,380
MARINE DUTY (IP56)														
IP56S (TEFC)				51	85	107	128	158	185	205	237	910	965	1,364
IP56D (TENV)	ON REQUEST													
Mining Motor (Mining Motors)				394	440	454	511	595	745	791	823	910	965	1,364

4) ELECTRICAL SPECIAL FEATURES - WEG MOD SHOP /KIT



NEMA FRAME SERIES	48	56	-	140T	180T	210T	250T	280T	320T	360T	400T	440T	500	580
IEC FRAME SERIES	-	-	63-80	90	100/112	132	160	180	200	225	250	280	315	355
Thermistors (1 / phase) PTC:														
Factory Build Adder				142	142	142	142	142	142	142	142	142	142	142
WEG Mod Shop				812	812	820	930	950	960	990	1,015	1,075	1,125	1,185
Spare Part (Kit)				212	212	212	212	212	212	212	212	212	212	212
Thermostats (1 / phase) NC:														
Factory Build Adder				142	142	142	142	142	142	142	142	142	142	142
WEG Mod Shop				812	812	820	930	950	960	990	1,015	1,075	1,125	1,185
Spare Part (Kit)				212	212	212	212	212	212	212	212	212	212	212
Winding RTD's PT100 (1 / phase):														
Factory Build Adder				1,215	1,215	1,215	1,215	1,215	1,215	1,215	1,215	1,215	1,215	1,215
WEG Mod Shop				2,172	2,172	2,172	2,387	2,387	2,387	2,772	2,772	2,772	2,772	
Spare Part (Kit)				1,369	1,369	1,369	1,369	1,369	1,369	1,369	1,369	1,369	1,369	1,369
Bearing RTD's PT100 (1/bearing)														
Factory Build Adder				1,052	1,052	1,052	1,052	1,052	1,052	1,052	1,052	1,052	1,052	1,052
WEG Mod Shop				2,241	2,241	2,451	2,451	2,692	2,692	2,692	2,692	2,692	2,692	
Spare Part (Kit)				1,139	1,139	1,139	1,139	1,139	1,139	1,139	1,139	1,139	1,139	1,139
Space Heater														
Factory Build Adder				37	37	37	54	54	54	109	109	109	109	217
WEG Mod Shop	615	615	615	615	630	750	770	785	820	850	915	970	1,050	1,050
Spare Part (Kit)		55	55	55	70	70	81	81	81	163	163	308	308	325

ADD-ON™
MODIFICATIONS

4) ELECTRICAL SPECIAL FEATURES - PRODUCTION

NEMA FRAME SERIES	48	56	-	140T	180T	210T	250T	280T	320T	360T	400T	440T	500	580
IEC FRAMES SERIES	-	-	63-80	90	100/112	132	160	180	200	225	250	280	315	355
Double grounding lug: Factory Build Adder				48	48	48	64	64	64	64	64	64	64	97
Class of Insulation : -"F" Factory Build Adder	Add 5% to motor list price							Add 3% to motor list price						
Class of Insulation : -"H" Factory Build Adder	Add 10% to motor price													
Epoxy varnish impregnation Factory Build Adder	Add 5% to motor price													
Above 600 V (1000 Max.) Factory Build Adder	Add 10% to motor price													
Design "B" (for Design "A" motor) Factory Build Adder	Add 10% to motor price													

ADD-ON PRICES ONLY INCLUDE MATERIAL AND LABOR. If certain parts need to be transferred from one location to other freight costs will be added to the final price.

5) FLANGES – INSTALLED

NEMA FRAME SERIES	48	56		140T	180T	210T	250T	280T	320T	360T	400T	440T	500	580
IEC FRAMES SERIES			63-80	90	100/112	132	160	180	200	225	250	280	315	355
"C" Flange – TEFC Factory Build Adder	28	28	28	28	38	51	68	99	121	442	491	606	716	1,623
WEG Mod Shop	268	268	268	278	311	375	455	557	771	990	1,199	1,450	3,371	3,745
"C" Flange – ODP Factory Build Adder	28	28		34	38	51	68	85	100	394	446	560		
WEG Mod Shop	268	268		278	311	375	455	557	771	990	1,199	1,450		
"C" Flange – TEFC (Explosion) Factory Build Adder		61	61	61	70	76	103	147	182	665	736	1,384	1,384	
WEG Mod Shop				364	461	514	621	905	1,097	1,472	1,750	2,675	3,210	4,815
"D" Flange – TEFC Factory Build Adder			50	59	70	79	117	136	192	637	762	915	1,051	1,863
WEG Mod Shop				333	373	450	546	668	925	1,188	1,439	1,740	4,045	4,494
"D" Flange – ODP (Standard) Factory Build Adder							107	126	170	537	685	855		
WEG Mod Shop							546	668	925	1,188	1,439	1,740		
"D" Flange – TEFC (Explosion) Factory Build Adder				89	89	103	130	189	246	736	1,067	1,311	1,577	2,364
WEG Mod Shop				437	553	617	745	1,085	1,317	1,766	2,100	3,210	3,852	5,778

6) FLANGE KITS – ROLLED-STEEL MOTORS

FRAME	C-FLANGE	Price	D-FLANGE	Price
143T / 145T	FLC-RS140	98	FLD-RS140	98
182T / 184T	FLC-RS180	124	FLD-RS180	154
213T / 215T	FLC-RS210	141	FLD-RS210	167
254T / 256T	FLC-RS250	180	FLD-RS250	180

6) FLANGE KITS – IEEE841-WITH INPRO/SEAL®

FRAME*	C-FLANGE	Price
143T	FLC-IE140	631
145T		
182T	FLC-IE180	800
184T		
213T	FLC-IE210	949
215T		
254T	FLC-IE250	1073
256T		
284T	FLC-IE280	1203
286T		
324T	FLC-IE320	1365
326T		

* For frames 364T and above please consider TEFC General Purpose Flange kits. Motor's existing bearing caps (with Inpro/Seal®) will be transferred into the flange kit.



6) FLANGE KITS GENERAL PURPOSE CRUSHER DUTY & NEMA PREMIUM – TEFC / CAST IRON

FRAME (bearing size)	C-FLANGE	Price	D-FLANGE	Price
General Purpose, Crusher Duty and NEMA Premium - TEFC				
143T	FLC-E140	98	FLD-E140	98
145T	FLC-E140	98	FLD-E140	98
W182T	FLC-EW180	141	FLD-EW180	171
182T	FLC-E180	124	FLD-E180	154
W184T	FLC-EW180	141	FLD-EW180	171
184T	FLC-E180	124	FLD-E180	154
W213T	FLC-EW210	158	FLD-EW210	184
213T	FLC-E210	141	FLD-E210	167
W215T	FLC-EW210	158	FLD-EW210	184
215T	FLC-E210	141	FLD-E210	167
W254T	FLC-EW250	192	FLD-EW250	218
254T	FLC-E250	180	FLD-E250	180
W256T	FLC-EW250	192	FLD-EW250	218
256T	FLC-E250	180	FLD-E250	180
284T/284TS	FLC-E280	272	FLD-E280	274
286T/286TS	FLC-E280	272	FLD-E280	274
324T/324TS	FLC-E320	423	FLD-E320	423
326T/326TS	FLC-E320	423	FLD-E320	423
364T(6314)	FLC-E360-6314	620	FLD-E360-6314	620
364TS(6314)	FLC-E360-6314	620	FLD-E360-6314	620
365T(6314)	FLC-E360-6314	620	FLD-E360-6314	620
365TS(6314)	FLC-E360-6314	620	FLD-E360-6314	620
404T(6316)	FLC-E400-6316	765	FLD-E400-6316	765
405T(6316)	FLC-E400-6316	765	FLD-E400-6316	765
405TS(6314)	FLC-E360-6314	620	FLD-E400-6314	620
405TS(6316)	FLC-E400-6316	765	FLD-E400-6316	765
444T(6319)	FLC-E440-6319	932	FLD-E440-6319	932
444TS(6314)	FLC-E440-6314	932	FLD-E440-6314	932
444TS(6319)	FLC-E440-6319	932	FLD-E440-6319	932
445T(6314)	FLC-E440-6314	932	FLD-E440-6314	932
445T(6319)	FLC-E440-6319	932	FLD-E440-6319	932
445TS(6314)	FLC-E440-6314	932	FLD-E440-6314	932
445TS(6319)	FLC-E440-6319	932	FLD-E440-6319	932
447T(6319)	FLC-E440-6319	932	FLD-E440-6319	932
447TS(6314)	FLC-E440-6314	932	FLD-E440-6314	932
447TZ(6322)	Check with your sales person		Check with your sales person	
449T/N449(6322)	FLC-E449-6322	1030	FLD-E449-6322	996
449TZ(6322)	FLC-E449-6322	1030	FLD-E449-6322	996
449TS (6314)	FLC-E449-6314	1030	Check with your sales person	
504(6319)	FLC-E440-6319	932	Check with your sales person	
504S(6314)	FLC-E440-6314	932	Check with your sales person	
505(6319)	FLC-E440-6319	932	Check with your sales person	
505S(6314)	FLC-E440-6314	932	Check with your sales person	
505Z(6322)	Check with your sales person		Check with your sales person	
586/7T(6322)	FLC-E586-6322	2604	FLD-E586-6322	2715
586/7TS(6314)	FLC-E586-6314	2604	Check with your sales person	
580Z(6324)	FLC-E586-6324	1810	FLD-E586-6324	2521

NOTE: You must consider bearings size for frame 364T and larger

ADD-ON™
MODIFICATIONS

6) FLANGE KITS

GENERAL PURPOSE -HIGH & NEMA PREMIUM EFFICIENCY – ODP

FRAME (bearing size)	C-FLANGE	Price	D-FLANGE	Price
General Purpose - High and NEMA Premium Efficiency - ODP				
N143T	FLC-0140	47	N/A	
N145T	FLC-0140	47	N/A	
182T	FLC-0180	51	N/A	
184T	FLC-0180	51	N/A	
213T	FLC-0210	64	N/A	
215T	FLC-0210	64	N/A	
254T	FLC-0250	73	FLD-0250	133
256T	FLC-0250	73	FLD-0250	133
284T/284TS	FLC-0280	133	FLD-0280	158
286T/286TS	FLC-0280	133	FLD-0280	158
324T/324TS	FLC-0320	180	FLD-0320	201
326T/326TS	FLC-0320	180	FLD-0320	201
364T(6314)	FLC-0360-6314	466	FLD-0360-6314	598
364TS(6314)	FLC-0360-6314	466	FLD-0360-6314	598
365T(6314)	FLC-0360-6314	466	FLD-0360-6314	598
365TS(6314)	FLC-0360-6314	466	FLD-0360-6314	598
404T(6316)	FLC-0400-6316	517	FLD-0400-6316	701
404TS(6314)	FLC-0360-6314	466	FLD-0400-6314	598
404TS(6316)	FLC-0400-6316	517	FLD-0400-6316	701
405T(6316)	FLC-0400-6316	517	FLD-0400-6316	701
405TS(6314)	FLC-0360-6314	466	FLD-0400-6314	598
405TS(6316)	FLC-0400-6316	517	FLD-0400-6316	701
444T(6319)	FLC-0440-6319	932	FLD-0440-6319	885
444TS(6314)	FLC-0440-6314	932	FLD-0440-6314	885
444TS(6319)	FLC-0440-6319	932	FLD-0440-6319	885
445T(6319)	FLC-0440-6319	932	FLD-0440-6319	885
445TS(6314)	FLC-0440-6314	932	FLD-0440-6314	885
445TS(6319)	FLC-0440-6319	932	FLD-0440-6319	885

NOTE: You must consider bearings size for frame 364T and larger

6) FLANGE KITS

EXPLOSION PROOF – TEFC - CAST IRON FRAMES

FRAME (bearing size)	C-FLANGE	Price	D-FLANGE	Price
Explosion Proof - TEFC - Cast Iron Frames				
143T	FLC-X140	120	FLD-X140	154
145T	FLC-X140	120	FLD-X140	154
182T	FLC-X180	201	FLD-X180	210
184T	FLC-X180	201	FLD-X180	210
213T	FLC-X210	214	FLD-X210	291
215T	FLC-X210	214	FLD-X210	291
254T	FLC-X250	291	FLD-X250	534
256T	FLC-X250	291	FLD-X250	534
284T/284TS	FLC-X280	517	FLD-X280	637
286T/286TS	FLC-X280	517	FLD-X280	637
324T/324TS	FLC-X320	663	FLD-X320	795
326T/326TS	FLC-X320	663	FLD-X320	795
364T(6314)*	FLC-X360-6314	992	FLD-X360-6314	1141
364TS(6314)	FLC-X360-6314	992	FLD-X360-6314	1141
365T(6314)	FLC-X360-6314	992	FLD-X360-6314	1141
365TS(6314)	FLC-X360-6314	992	FLD-X360-6314	1141
404T(6217)	FLC-X400-6217	1210	FLD-X400-6217	1338
405T(6217)	FLC-X400-6217	1210	FLD-X400-6217	1338
405TS(6314)	FLC-X360-6314	992	Check with your sales person	1141
405TS(6217)	FLC-X400-6217	1210	FLD-X400-6217	1338
444T and larger	Check with your sales person		Check with your sales person	

NOTE: You must consider bearings size for frame 364T and larger

6) FLANGE KITS BRAKE MOTORS

FRAME	C-FLANGE	Price	D-FLANGE	Price
Brake Motors				
143T	FLC-E140	98	FLD-E140	98
145T	FLC-E140	98	FLD-E140	98
182T	FLC-E180	124	FLD-E180	154
184T	FLC-E180	124	FLD-E180	154
213T	FLC-E210	141	FLD-E210	167
215T	FLC-E210	141	FLD-E210	167
254T	FLC-E250	180	FLD-E250	180
256T	FLC-E250	180	FLD-E250	180
284T	FLC-E280	272	FLD-E280	274
286T	FLC-E280	272	FLD-E280	274

6) FLANGE KITS FARM DUTY MOTORS

Motor Model	C-FLANGE	Price
Farm Duty Motors		
.3318ES1RFDB56(a)*	FLC-FDB56	73
.5018ES1RFDB56(a)*	FLC-FDB56	73
.7518ES1RFDB56(a)*	FLC-FDB56	73
00118ES1RFD143T(a)*	FLC-FD140T	120
00118ES1RFDD56(a)*	FLC-FDD56	73
00158ES1RFDF56H(a)*	FLC-FDD56	73
00158ES1RFD145T(a)*	FLC-FD140T	120
00218ES1RFD145T(a)*	FLC-FD140T	120
00218ES1RFDG56H(a)*	FLC-FDG56	73
00218ES1RFD182T	FLC-FDW180	141
00318ES1DFD184T	FLC-FDW180	141
00518ES1DFD184T	FLC-FD180	141
00518ES1DFD215T	FLC-FDW210	158
00518ES1DFD215Z	FLC-FDW210	158
00718ES1DFD215T	FLC-FD210	158
00718ES1DFD215Z	FLC-FD210	158
01018ES1DFD215T	FLC-FD210	158

NOTE: Motors designated with (a)* have a steel frame. All others are cast iron

6) FLANGE KITS TEFC – SINGLE PHASE – GENERAL PURPOSE NEMA “T” FRAME

FRAME	C-FLANGE	Price	D-FLANGE	Price
TEFC - Single Phase-General Purpose NEMA T frames				
143T(a)*	FLC-FD140T	120	N/A	
145T(a)*	FLC-FD140T	120	N/A	
182T	FLC-E180	124	FLD-E180	154
184T	FLC-E180	124	FLD-E180	154
213T	FLC-E210	141	FLD-E210	167
215T	FLC-E210	141	FLD-E210	167
215TZ	FLC-E210	141	FLD-E210	167

NOTE: Motors designated with (a)* have a steel frame. All others are cast iron

6) FLANGE KITS IEC – TRU-METRIC / CAST IRON FRAME

FRAME (bearing size)	C-DIN FLANGE	Price	D-DIN/FF FLANGE	Price
IEC-Tru-Metric/Cast Iron Frame				
63	FLC-IM63DIN	39	FLF-IM63	39
71	FLC-IM71DIN	43	FLF-IM71	43
80	FLC-IM80DIN	45	FLF-IM80	43
90S/90L	FLC-IM90DIN	47	FLF-IM90	51
100L	FLC-IM100DIN	60	FLF-IM100	64
112M	FLC-IM112DIN	64	FLF-IM112	68
132S/132M	FLC-IM132DIN	94	FLF-IM132	98
160M/160L	FLC-IM160	145	FLF-IM160	145
180M/180L	FLC-IM180	250	FLF-IM180	308
200L	FLC-IM200	464	FLF-IM200	496
225S/M	FLC-IM225	689	FLF-IM225	688
250S/M(6314)	FLC-IM250-6314	758	FLF-IM250-6314	872
280S/M(6314)	FLC-IM280-6314	722	FLF-IM280-6314	943
280S/M(6316)	FLC-IM280-6316	722	FLF-IM280-6316	943
315S/M(6314)	Check with your sales person		FLF-IM315-6314	Check with your sales person
315S/M(6319)			Check with your sales person	
355M/L(6316)				
355M/L(6322)				

6) FLANGE KITS IEC – TRU-METRIC / ALUMINUM FRAME

FRAME	C-DIN FLANGE	Price	D-DIN / FF FLANGE	Price
IEC-Tru-Metric / Aluminum Frame				
63	FLC-IM63DIN-AL	39	FLF-IM63-AL	67
71	FLC-IM71DIN-AL	43	FLF-IM71-AL	69
80	FLC-IM80DIN-AL	Check with your sales person	FLF-IM80-AL	Check with your sales person
90S/90L	FLC-IM90DIN-AL	47	FLF-IM90-AL	91
100L	FLC-IM100DIN-AL	59	FLF-IM100-AL	105
112M	FLC-IM112DIN-AL	65	FLF-IM112-AL	148
132S/132M	FLC-IM132DIN-AL	94	FLF-IM132-AL	173

6) FLANGE KITS TEFC – 56 FRAME / SINGLE AND THREE PHASE

FRAME	C-FLANGE	Price
TEFC - 56 Frame / Single and Three Phase		
B56	FLC-FDB56	73
D56	FLC-FDD56	73
F56	FLC-FDD56	73
H56	Check with your sales person	

MODIFICATIONS / SPECIAL FEATURES / SPARE PARTS



ADD-ON PRICES ONLY INCLUDE MATERIAL AND LABOR. If certain parts need to be transferred from one location to other freight costs will be added to the final price.

7) TEFC DRIP COVER KITS

Frame	Part Number	List Price	Mult. Sym.
140	DRCV-E140	89	W1
180	DRCV-E180	95	W1
210	DRCV-E210	131	W1
250	DRCV-E250	152	W1
280	DRCV-E280	220	W1

7) TEFC DRIP COVER KITS

Frame	Part Number	List Price	Mult. Sym.
140	DRCV-OPD140	89	W1
180	DRCV-OPD180	95	W1
210	DRCV-OPD210	131	W1
250	DRCV-OPD250	152	W1
280	DRCV-OPD280	220	W1
320	DRCV-OPD320	366	W1
360/400	DRCV-OPD360/400	410	W1
440	DRCV-OPD440	613	W1

8) PAINTING PLANS Factory Build Adder

NEMA FRAME SERIES	-	140T	180T	210T	250T	280T	320T	360T	400T	444/5T	447/9T / 500	580
IEC FRAME SERIES	63-80	90	100/112	132	160	180	200	225	250	280	315	355
Painting Plan: - 202	45	58	94	120	196	228	246	308	335	402	447	745
-203	58	85	138	188	290	344	384	509	553	696	808	1,269
-211	106	114	133	228	467	547	597	775	828	1,003	1,075	1,113
-212	122	133	171	277	585	692	779	1,026	1,121	1,410	1,577	1,661
Internal Epoxy Painting	45	58	94	120	196	228	246	308	335	402	447	745

9) PAINTING PLANS DESCRIPTION

Painting Plan Number	Recommended Uses	Surface Preparation Grade	PRIMER		INTERMEDIATE		FINISH COAT		ADHERENCE GRADE ASTM
			Paint	Film Thickness (mm)	Paint	Film Thickness (mm)	Paint	Film Thickness (mm)	D-3359
201A	Non aggressive environments; Not recommended for direct exposure to solvents, alkalis and acid vapors	Sa 2 ½	Synthetic alkyd primer	20 – 55	-	-	Synthetic alkyd enamel	40 – 60	3B to 5B
202E	Aggressive sheltered industrial environments; Chemical, pulps and paper industries, resistant to acid steams, alkalis and solvents vapors	Sa 2 ½	Synthetic alkyd primer	20 - 55	Epoxy Isocyanate	20 - 30	Epoxy polyamide enamel	100 – 140	3A to 5A
202P	Aggressive sheltered or non-sheltered industrial environments; Chemical, mining, pulps and paper industries, resistant to acid steams, alkalis and solvents vapors; Indicated to food processing motors – USA and Europe	Sa 2 ½	Synthetic alkyd primer	20 - 55	Epoxy Isocyanate	20 - 30	1 coats Aliphatic polyurethane enamel	60 - 100	3A to 5A
203A	EnvironEnvironments low aggressiveness; Not recommended for direct exposure to solvents, alkalis and acid vapors	Sa 2 ½	Synthetic alkyd primer	20 – 55	Synthetic powdered alkyd primer	30 a 45	Synthetic alkyd enamel	30 – 45	3B to 5B
211E	Painting of equipments, structures in general subject to moderate and high aggressive level such as: pulp and paper plants, steel and iron and chemical industries	Sa 2 1/2	Polyamide Epoxy Primer	90 - 130	-	-	Polyamide Epoxy Top Coat	90 - 130	3A to 5A
211P	Painting of equipments, structures in general subject to moderate and high aggressive level such as: pulp and paper plants, steel and iron and chemical industries	Sa 2 1/2	Polyamide Epoxy Primer	90 - 130	-	-	Aliphatic polyurethane enamel	65 – 90	3A to 5A
212E	Non sheltered marine environment; Resistant to acid, alkalis and solvent spills	Sa 2 ½	Zinc ethyl silicate primer	70 - 90	Epoxy polyamide	90 – 130	Polyamide Epoxy Top Coat	90 – 130	3A to 5A
212P	Non sheltered marine environment; Resistant to acid, alkalis and solvent spills	Sa 2 ½	Zinc ethyl silicate primer	70 - 90	Epoxy polyamide	90 – 130	Aliphatic polyurethane enamel	65 – 90	3A to 5A

ADD-ON™
MODIFICATIONS

10) SHAFT

NEMA FRAME SERIES	48	56	-	140T	180T	210T	250T	280T	320T	360T	400T	440T	500	580
IEC FRAMES SERIES	-	-	63-80	90	100/112	132	160	180	200	225	250	280	315	355
Second Shaft End: Factory Build Adder				72	87	101	104	189	189	392	396	407	470	820
Threaded center hole in the shaft end: Factory Build Adder				33	41	51	85	136	155					
Stainless steel shaft: Factory Build Adder	Add 10% to motor list price													
Balance : - Reduced Factory Build Adder				33	79	91	100	125	134	156	167	188	274	548
Balance : - Special Factory Build Adder				58	87	133	159	180	217	250	283	317	419	782
Labor cost for special shaft: "A" (Diameter) Factory Build Adder				58	87	130	151	189	209	392	396	407	470	878
"B" (Length) Factory Build Adder				63	96	113	120	208	216	446	450	473	542	987
"C" (Diameter & Length) Factory Build Adder				72	125	141	158	249	262	574	579	628	710	1,122
"D" (Diameter, Length & Tapered) Factory Build Adder				79	130	156	174	271	288	646	654	716	806	1,255

11) TERMINAL BOX

NEMA FRAME SERIES	48	56	-	140T	180T	210T	250T	280T	320T	360T	400T	440T	500	580
IEC FRAME SERIES	-	-	63 up 80	90	100/112	132	160	180	200	225	250	280	315	355
Cable Gland : - Plastic Factory Build Adder				10	14	14	22	22	22					
Cable Gland : - Plastic Spare Part (kit)				17	22	22	34	34	34					
Cable Gland : - Brass Factory Build Adder				33	50	50	182	182	182	567	567	567	567	714
Cable Gland : - Brass Spare Part (kit)				48	74	74	273	273	273	851	851	851	851	1,072
Threaded Plug : Factory Build Adder				6	9	9	18	18	18	22	22	22	22	45
Threaded Plug: Spare Part (kit)				9	9	13	26	26	26	34	34	34	34	68
Additional terminal box : Factory Build Adder				30	30	41	41	41	41	59	59	59	59	122
Without Terminal Box: Factory Build Adder				18	22	22	33	33	33	45	45	47	47	66
F1 to F2 or Vice-versa: WEG Mod Shop				275	275	275	295	330	367	405	442	594	695	695

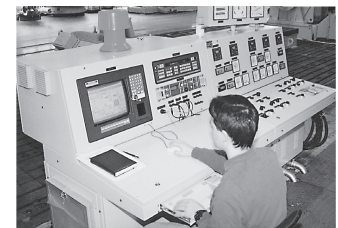
12) TESTING

NEMA Frame Series	48	56	-	140T	180T	210T	250T	280T	320T	360T	400T	440T	500	580
IEC Frame Series	-	-	63 up 80	90	100/112	132	160	180	200	225	250	280	315	355
Short (Routine) Testing Unwitnessed				381	381	513	513	513	513	622	622	718	718	878
Witnessed				1,215	1,215	1,427	1,427	1,427	1,427	1,683	1,683	1,903	1,903	2,378
Performance (Type) Testing Unwitnessed				586	586	769	769	769	769	952	952	1,208	1,208	1,771
Witnessed				1,419	1,419	1,632	1,632	1,632	1,632	1,939	1,939	2,195	2,195	3,147
Vibration				183	183	205	205	205	205	285	285	403	403	556
Noise Level				213	213	242	242	242	242	322	322	462	462	637
Prototype				571	571	659	659	659	659	718	718	820	820	1,069

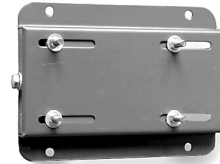
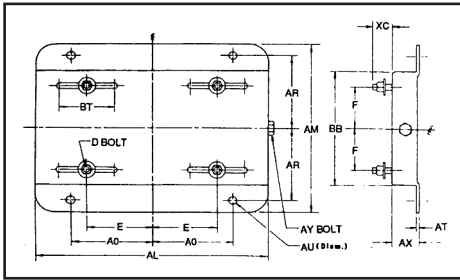
ADD-ON PRICES ONLY INCLUDE MATERIAL AND LABOR. If certain parts need to be transferred from one location to other freight costs will be added to the final price.

TESTING:

- Short (routine) test includes: No load current, full load current, winding resistance, locked rotor current, nominal torque, locked rotor torque, breakdown torque.
- Performance (type) test includes: All the above plus heat run test (temperature rise) and efficiency per IEEE 112 method B.
- Transportation, accommodation and food expenses for customer/inspector during testing period are not included in the price.



Testing Lab.
www.weg.net

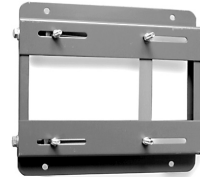
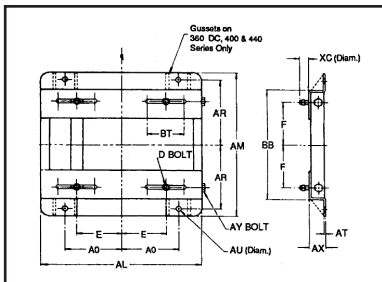


13) MOTOR BASES – STYLE A – STOCK BASES

Frame & Catalog #	List Price	AL	AM	AX	BB	E	F	AO	AR	AU	BT
143T*	\$73.32	10 1/2	7 1/2	1 1/8	5 1/2	2 3/4	2	3 3/4	3 3/8	3/8	3
145T*	\$73.32	10 1/2	8 1/2	1 1/8	6 1/2	2 3/4	2 1/2	3 3/4	3 7/8	3/8	3
182T*	\$86.71	12 3/4	9 1/2	1 1/2	6 1/2	3 3/4	2 1/4	4 1/2	4 1/4	1/2	3
184T*	\$86.71	12 3/4	10 1/2	1 1/2	7 1/2	3 3/4	2 3/4	4 1/2	4 3/4	1/2	3
213T*	\$117.65	15	11	1 3/4	7 1/2	4 1/4	2 3/4	5 1/4	4 3/4	1/2	3 1/2
215T*	\$117.65	15	12 1/2	1 3/4	9	4 1/4	3 1/2	5 1/4	5 1/2	1/2	3 1/2

Bases noted (*) Also available in Standard Stock Double Adjusting Style A2

Bases Adjusting Bolts on Style A2 Bases are in line with D Bolts on F Dimension

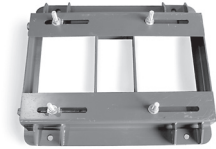
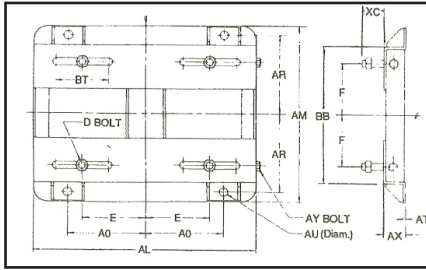


13) MOTOR BASES – STYLE B – STOCK BASES

Frame & Catalog#	List Price	AL	AM	AX	BB	E	F	AO	AR	AU	BT
254T*	\$219.70	17 3/4	15 1/8	2	10 3/4	5	4 1/8	6 1/4	6 5/8	5/8	4
256T*	\$217.70	17 3/4	16 7/8	2	12 1/2	5	5	6 1/4	7 1/2	5/8	4
284T*	\$239.85	19 3/4	16 7/8	2	12 1/2	5 1/2	4 3/4	7	7 1/2	5/8	4 1/2
286T*	\$239.85	19 3/4	18 3/8	2	14	5 1/2	5 1/2	7	8 1/4	5/8	4 1/2
324T*	\$321.10	22 3/4	19 1/4	2 1/2	14	6 1/4	5 1/4	8	8 1/2	3/4	5 1/4
326T*	\$321.10	22 3/4	20 3/4	2 1/2	15 1/2	6 1/4	6	8	9 1/4	3/4	5 1/4
364T*	\$410.15	25 1/2	20 1/2	2 1/2	15 1/2	7	5 5/8	9	9 1/8	3/4	6
365T*	\$410.15	25 1/2	21 1/2	2 1/2	16 1/2	7	6 1/8	9	9 5/8	3/4	6
404T*	\$599.95	28 3/4	22 3/8	3	16 1/2	8	6 1/8	10	9 7/8	7/8	7
405T*	\$599.95	28 3/4	23 7/8	3	18	8	6 7/8	10	10 5/8	7/8	7
444T*	\$746.20	31 1/4	24 5/8	3	19 1/4	9	7 1/4	11	11	7/8	7 1/2
445T*	\$746.20	31 1/4	35 1/8	3	29 3/4	9	12 1/2	11	12	7/8	7 1/2
447T*	\$1,022.75	31 1/4	30 1/8	3	24 3/4	9	10	11	13 3/4	7/8	7 1/2
449T*	\$1,022.75	31 1/4	35 1/8	3	24 3/4	9	12 1/2	11	16 1/4	7/8	7 1/2

Bases noted (*) Also available with gussets for additional strength

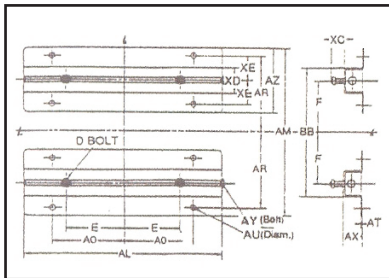
DIMENSIONS ARE IN INCHES: Bases are furnished with one coat of corrosion-resistant gray primer and zinc plated nuts and bolts. Bases listed may also be used if the motor frame is succeeded by S, T, U, US or any letter combination as long as the motor complies with NEMA.



13) MOTOR BASES – STYLE C – STOCK BASES

Frame & Catalog#	List Price	AL	AM	AX	BB	E	F	A0	AR	AU	App. Wt. (lb)
504T*	\$1,422.20	35	28	31/2	20 3/4	10	8	12 1/2	12 1/2	1	132
505T*	\$1,422.20	35	30	31/2	22 3/4	10	9	12 1/2	13 1/2	1	135

Dimensions are in inches: bases are furnished with one coat of corrosion-resistant gray primer and zinc plated nuts and bolts. Bases listed may also be used if the motor frame is succeeded by S, T, U, US or any letter combination as long as the motor complies with NEMA.



13) MOTOR BASES – SLIDE RAILS (PAIR)

Frame & Catalog#	List Price	AL	AM	AX	BB	E	F162	A0	AR	AU	App. Wt. (lb)
586T*	\$3,503.50	38 3/4	4	11 1/2	583	14 1/2	1 1/4	3/8	13	4 3/8	185

Dimensions are in inches: Rails are furnished with one coat of corrosion-resistant gray primer and zinc plated nuts and bolts. Furnished in pairs unless otherwise specified.