

EUT:FAX MODEM CARD

FCC ID:H52PT-3027

PURETEK INDUSTRIAL CO., LTD.

USER'S MANUAL

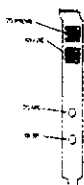


Chapter 1

Introduction

The PCI Voice/Fax/Data Modem connects your computer to Internet, and all kinds of BBS, and other popular Fax/Modems. This manual describes the features, procedures of installations, and AT command set...etc. of this modem.

Your modem...



PHONE: Phone jack.
LINE: Telephone line jack.
MIC: Microphone jack (for Voice Modem only).
SPK: Speaker jack (for Voice Modem only).

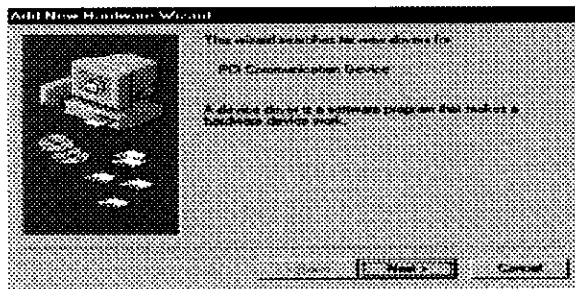
Features

This modem supports the following communication standards. ITU-T is known as CCITT.

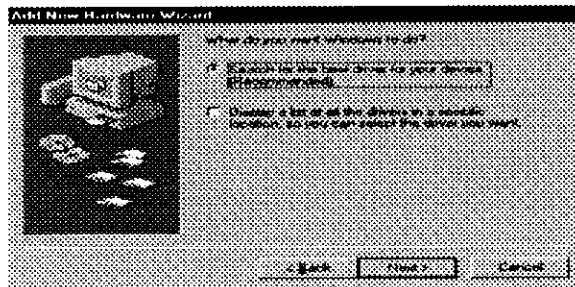
- Data**
 - ♦ **V.90 & K56flex**
 - ♦ ITU-T V.34, V.32bis, V.32, V.22bis, V.22
 - ♦ Bell 103 & 212A
 - ♦ V.42bis & MNP 5 (Data compression)
 - ♦ V.42 & MNP2-4 (Error correction)
 - ♦ V.80 (H.324 video conferencing interface)
- Fax**
 - ♦ V.17(14400bps FAX)
 - ♦ V.29(9600bps FAX)
 - ♦ V.27ter(4800bps FAX)
- Voice (For Voice Modem only)**
 - ♦ Voice/Audio mode
 - ♦ Full-Duplex speakerphone

System Requirement

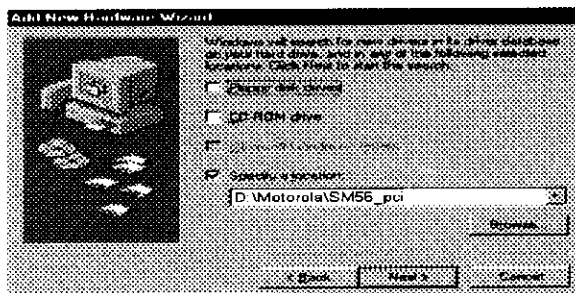
- ♦ 133 MHz Pentium or faster CPU
- ♦ 256K of Level 2 cache memory
- ♦ 16MB RAM
- ♦ WIN '95, WIN'98 Operation Systems



- (2) Select “Search for the best driver for your device”, then click “Next”.



- (3) Select “Browse” to specify the locations of the driver, e.g. D:\Motorola\SM56_pci. Click “Next”.



3. Select Country

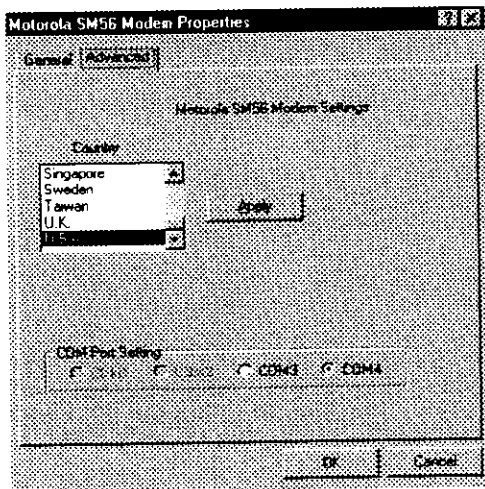
Under Win '98, double click <My Computer>.

⇒ Double click <Control Panel>

⇒ Double click <Motorola SM56 Modem >

⇒ Select <Advanced>

(1) Choose your country, then click “**Apply**”. If you choose wrong country, your modem will not work smoothly.



Chapter 3 Commands

Most people use the communication software programs to tell modem what they want the modem to do. Therefore, you may not use the commands in this chapter. However, if you prefer to communicate with your modem directly, you can type the following commands. Please note that when your type appears on the screen, your modem is in a "terminal mode". This chapter will be helpful if you like to work in a terminal mode.

When you typing commands...

- Use the BACKSPACE key to delete typing errors.
- Every command (except A/ and +++) must begin with the AT or at prefix and be entered by pressing the ENTER key. For example, to execute the V command, you would type ATV and press the ENTER key.
- All defaults are based on the &F Hardware Flow Control template load in NVRAM when the modem is shipped.

AT Commands

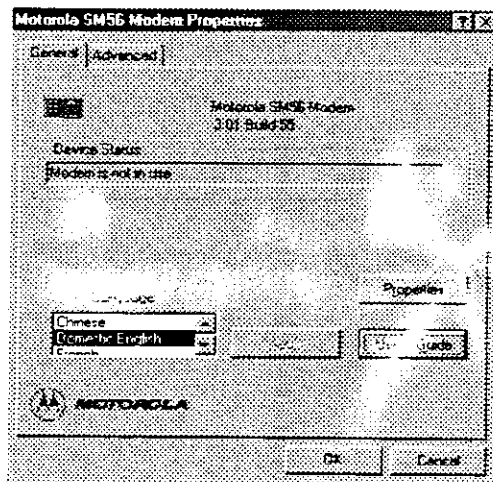
Detailed AT commands, please find it as following procedures:

Under Win '98, double click <My Computer>.

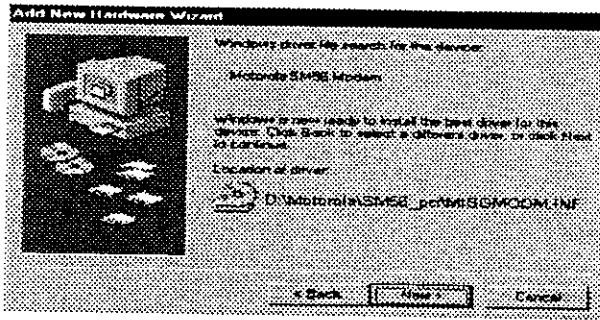
⇒ Double click <Control Panel>

⇒ Double click <Motorola SM56 Modem >

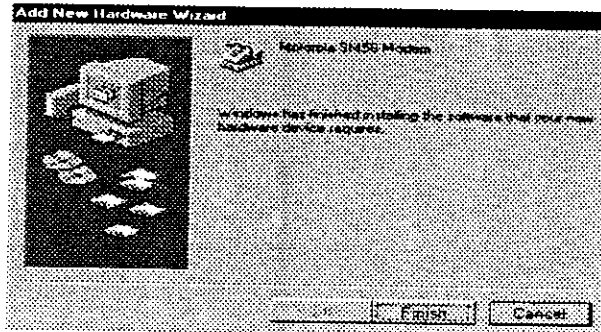
⇒ Click <User's Guide>



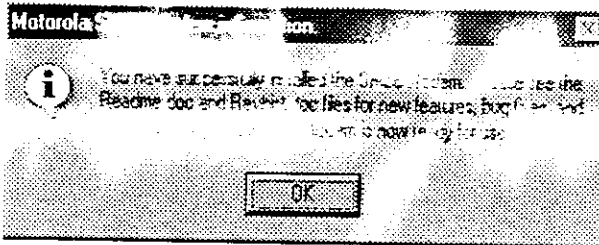
- (4) The following message will appear click "Next", then Windows will install the modem driver.



- (5) Click "Finish", when following message appeared.



- (6) When you see the following message you have successfully installed the modem. Click "OK".



Chapter 2 Installations

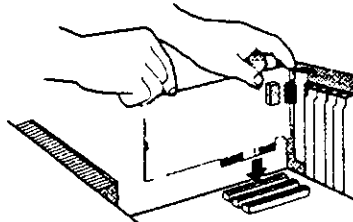
This chapter describes the steps how to install and power on your fax modem.

Before installing your modem, you MUST disable COM 1 or COM 2 port on your mainboard. Otherwise, your modem will not work properly.

1. Installing your modem card

Step 1 :

Turn off your computer.
Carefully remove the cover
from the computer and
select a slot for your
modem.



Step 2 :

Carefully slide the internal
modem into the slot
applying with pressure
until the modem is completely plugged into the slot.

Step 3 :

Replace the slot cover screw to secure the modem and replace the
computer's cover.

Step 4 :

Connect the phone cable from modem's **LINE** connector to the phone
outlet.

Step 5 :

You can also connect your telephone to the modem's **PHONE** jack
optionally.

Step 6 :

Turn on your computer and your modem is now installed.

2. Installation Procedure for Windows 98

Note: Win '9x driver of modem is on bundled CD.

- (1) After finishing installation of hardware, please power on your PC.
Under Win '98, your PC will find a new device and show following
message on screen. Please put the bundled Win '9x driver into your
CD driver, then Click "Next".

FEDERAL COMMUNICATIONS COMMISSION

This device complies with Part 15 of the FCC Rules. Operation is subject to the following two conditions: (1) this device may not cause harmful interference, and (2) this device must accept any interference received, including interference that may cause undesired operation.

NOTE

This equipment has been tested and found to comply with the limits for a Class B digital device, pursuant to Part 15 of the FCC Rules. These limits are designed to provide reasonable protection. This equipment generates, uses and can radiate radio frequency energy and, if not installed and used in accordance with the instructions, may cause harmful interference to radio communications. However, there is no guarantee that interference will not occur in a particular installation. If this equipment does cause harmful interference to radio or television reception, which can be determined by turning the equipment off and on, the user is encouraged to try to correct the interference by one or more of the following measures:

- Reorient or relocate the receiving antenna.
- Increase the separation between the equipment and receiver.
- Connect the equipment into an outlet on a circuit different from that to which the receiver is connected.
- Consult the dealer or an experienced radio/TV technician for help.

Changes or modifications not expressly approved by the party responsible for compliance could void the user's authority to operate the equipment.