

56K PCI Modem

User's Manual

Ver. A 3029-0008

FCC Part 15

Operation is subject to the following two conditions:

1. This device may not cause harmful interference.
2. This device must accept any interference received including interference that may cause undesired operation.

This equipment has been tested and found to comply with the limits for a Class B digital device, pursuant to Part 15 of the FCC Rules. These limits are designed to provide reasonable protection against harmful interference when the equipment is operated in a residential installation. This equipment generates, uses, and can radiate frequency energy and if not installed and used in accordance with the instructions, may cause harmful interference to radio communications. However, there is no guarantee that the interference to radio or television reception, which can be determined by turning the equipment off and on, the user is encouraged to try to correct the interference by one or more of the following measures:

- § Reorient or relocate the receiving antenna.
- § Increase the separation between the equipment and receiver.
- § Connect the equipment into an outlet on a

circuit different from that to which the receiver is connected.

- § Consult the dealer or an experienced radio/TV technician for help.

Any changes or modifications not expressly approved by the grantee of this device could void the user authority to operate the equipment.

Caution **FCC Part 68 Notice**

This equipment complies with Part 68 of the FCC rules. On the base of this unit is a label that contains, among other information, the FCC registration number and Ringer Equivalence Number (REN) for this equipment. If requested, this information must be given to your telephone company.

The REN is used to determine the quantity of devices you may connect to your telephone line and still have all of those devices ring when your number is called. In most, but not all areas, the sum of the RENs of all devices should not exceed five (5.0). To be certain of the number of devices you may connect to your line, as determined by the total RENs, you should call your local telephone company to determine the maximum RENs for your calling area.

If the telephone company suspects a problem with your telephone line is related to an add-on

electronic device, such as your modem, they have the right to temporarily suspend your service. It is your responsibility to remove from the telephone line any malfunctioning electronic communications equipment to avoid damage to the telephone system.

If your equipment causes harm to the telephone network, the telephone company may discontinue your service temporarily. If possible, they will notify you in advance. But if advance notice is not practical, you will be notified as soon as possible. You will be informed of your right to file a complaint with the FCC. Your telephone company may make changes to its facilities, equipment, operations, or procedures that could affect the proper functioning of your equipment. If they do, you will be notified in advance to give you an opportunity to maintain uninterrupted telephone service.

The telephone company may ask that you disconnect this equipment from the network until the problem has been corrected or until you are sure that the equipment is not malfunctioning.

This equipment may not be used on coin service provided by the telephone company. Connection to party lines is subjected to state tariffs.

If you experience trouble with this telephone equipment, please contact your place of purchase for information on obtaining service or repairs.

Table of Contents

Chapter 1 Introduction

Your Modem	1
Features.....	2
System Requirements.....	2
Package Checklist	3

Chapter 2 Installations

Hardware Installation	4
Installation Procedures for Windows NT4.0 driver	5
Installation Procedures for Windows 98 driver	6
Installation of Procedures for Windows 2000 driver	10
AT Command	11

Introduction

The Voice/Fax/Data Modem connects your computer to Internet, and all kinds of BBS, and other popular Fax / Modems. This manual describes the features, procedures of installations, and AT command set... etc. of this modem.

Your modem...

There are indicator lights and connectors on the front and back side of this modem. Following is the meaning of these light and connectors for your reference:

1. External Front Panel

RD	:	Received Data indicator.
TD	:	Transmitted Data indicator.
CD	:	Carrier Detect indicator.
OH	:	Off Hook.
MR	:	Modem Ready.

2. External Rear Panel

PHONE	:	Phone jack.
LINE	:	Telephone line jack.
RS232	:	RS232 cable socket.
AC-IN	:	AC adapter input.
ON/OFF	:	Power switch.

Features

This modem supports the following communication standards. ITU-T is known as CCITT.

Data

- ITU-T V.90
- ITU-T V.34, V.32bis, V.32, V.22bis, V.22
- Bell 103 & 212A
- V.42bis & MNP 5 (Data compression)
- V.42 & MNP2-4 (Error correction)

Fax

- V.17 (14400bps FAX)
- V.29 (9600bps FAX)
- V.27ter (4800bps FAX)

Voice

- Voice/Audio mode

System Requirements

- Windows NT 4.0, Windows 95, Windows 98, Windows 2000.

Package Checklist

The package contains the following items:

- One fax modem
- One piece of phone cable
- One piece of RS-232 cable
- One CD
- One AC Adaptop
- The fax modem Quick Installation Guide

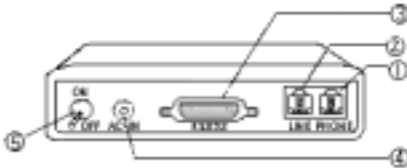
If any of these items are missing or damaged, please contact your dealer or sales representative for assistance.

Installations

This chapter describes how to install and power on you fax modem.

Note Before complete the hardware installation be aware not to power on the modem

Hardware Installation



1. Plug the male end of the **RS-232** cable into the connector marked **RS-232** (③) on the back of the modem.
2. Plug the other end of this cable into the serial port on the back of your computer.
3. (Be sure your modem is Power off) Plug the power cable into the **AC-IN** connector (④) on the back of the modem.
4. Plug the power adapter into a wall outlet.

5. Plug one end of the phone cable into the modem's **LINE** jack (②). Plug the other end into the phone outlet.
6. To use telephone and the modem on the same line, plug one end of the optional phone cable into the **PHONE** jack(①) on the modem; plug the other end into the phone. Lift the telephone handset and listen for a **DIALTONE** to check the connection.
7. Turn your modem on(⑤). The **MR** lights should light up.
8. Turn your computer on.

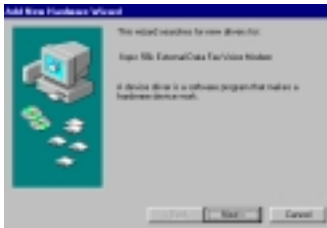
Installation Procedures for Windows NT4.0 Driver

1. When enter to the Winnt operating system, select the modem item in the control panel, the following dialog box will appear, please select "do not detect my modem...", then click Next.
2. Select install from disk, the following dialog box appear, please specify the path of the driver, e.g. D:\Drivers\winnt4, then click Next.
3. Varies type of modems will show in a dialog box, please select ("Topic 56000bps External Fax Voice Modem"), then click Next.

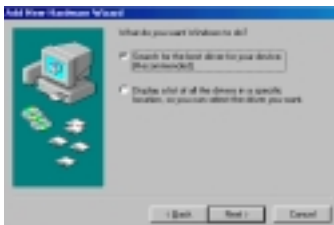
4. Please select the COM port which attach to your modem, then click Next
5. You have installed the modem successfully .
6. If you want to configure the setting of your modem, please select the modem item in the control panel, a dialog box with modem status will appear.

Installation Procedures for Windows 98 Dirver

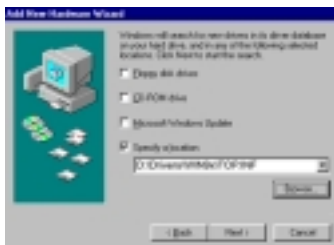
1. Once you have completed the hardware installation, power on your computer. When running Win 98, your system will detect a new device and the following message will appear. click Next .



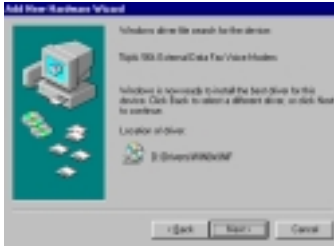
2. Select the "search for the best driver for your device (Recommended)" option, then click Next .



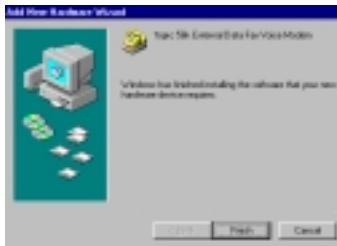
3. Place the disk containing the driver of Win 9X into your floppy disk drive. Specify the location of the modem driver, e.g. D:\Drivers\WIN9x\TOP.INF . click Next .



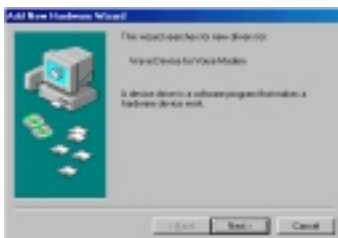
4. The following message will appear. click Next .



5. The installation has been completed. click Finish.



6. After the installation of Fax Voice Modem was completed, your system will detect Wave Device for Voice Modem and the following message will appear . click Next and then you could follow Step2 to Step5 to finish the installation .



Installation Procedures for Windows 2000 Driver

1. Once you have completed the hardware installation, power on your computer. When running Win 2000, your system will detect a new device. click Next.
2. Select the "search for the best driver for your device (Recommended)" option, then click Next.
3. Place the disk containing the driver of Win 2000 into your floppy disk drive. Select the "specify location", then click Next.
4. Browse the proper location of the driver path, e.g. D:\Drivers\WIN2000, then click Next.
5. Click Next.
6. Please read the Digital Signature, then click Yes.
7. To complete the installation, click Finish.

AT Command

Most people use the communication software programs to tell modems what to do. Therefore, you may not use the commands in this chapter. However, if you prefer to communicate with your modem directly, you can type the commands described below.

This chapter describes how to work in the terminal mode.

Note The disk contains detail of AT commands.
(file path:D :\ATCOMMAND.PDF)

Fax Modem

Quick Installation Guide

Ver. B 3030-0007

Table of Contents

Chapter 1 Introduction

Your Modem	1
Features.....	2
System Requirements.....	2
Package Checklist	3

Chapter 2 Installations

Hardware Installation	4
Installation Procedures for Windows NT4.0 driver	5
Installation Procedures for Windows 98 driver	6
Installation of Procedures for Windows 2000 driver	10
AT Command	11

Introduction

The Voice/Fax/Data Modem connects your computer to Internet, and all kinds of BBS, and other popular Fax / Modems. This manual describes the features, procedures of installations, and AT command set... etc. of this modem.

Your modem...

There are indicator lights and connectors on the front and back side of this modem. Following is the meaning of these light and connectors for your reference:

1. External Front Panel

RD	:	Received Data indicator.
TD	:	Transmitted Data indicator.
CD	:	Carrier Detect indicator.
OH	:	Off Hook.
MR	:	Modem Ready.

2. External Rear Panel

PHONE	:	Phone jack.
LINE	:	Telephone line jack.
RS232	:	RS232 cable socket.
AC-IN	:	AC adapter input.
ON/OFF	:	Power switch.

Features

This modem supports the following communication standards. ITU-T is known as CCITT.

Data

- ITU-T V.90
- ITU-T V.34, V.32bis, V.32, V.22bis, V.22
- Bell 103 & 212A
- V.42bis & MNP 5 (Data compression)
- V.42 & MNP2-4 (Error correction)

Fax

- V.17 (14400bps FAX)
- V.29 (9600bps FAX)
- V.27ter (4800bps FAX)

Voice

- Voice/Audio mode

System Requirements

- Windows NT 4.0, Windows 95, Windows 98, Windows 2000.

Package Checklist

The package contains the following items:

- One fax modem
- One piece of phone cable
- One piece of RS-232 cable
- One CD
- One AC Adaptop
- The fax modem Quick Installation Guide

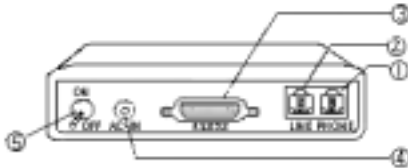
If any of these items are missing or damaged, please contact your dealer or sales representative for assistance.

Installations

This chapter describes how to install and power on you fax modem.

Note Before complete the hardware installation be aware not to power on the modem

Hardware Installation



1. Plug the male end of the **RS-232** cable into the connector marked **RS-232** (③) on the back of the modem.
2. Plug the other end of this cable into the serial port on the back of your computer.
3. (Be sure your modem is Power off) Plug the power cable into the **AC-IN** connector (④) on the back of the modem.
4. Plug the power adapter into a wall outlet.

5. Plug one end of the phone cable into the modem's **LINE** jack (②). Plug the other end into the phone outlet.
6. To use telephone and the modem on the same line, plug one end of the optional phone cable into the **PHONE** jack(①) on the modem; plug the other end into the phone. Lift the telephone handset and listen for a **DIALTONE** to check the connection.
7. Turn your modem on(⑤). The **MR** lights should light up.
8. Turn your computer on.

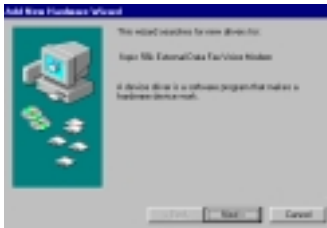
Installation Procedures for Windows NT4.0 Driver

1. When enter to the Winnt operating system, select the modem item in the control panel, the following dialog box will appear, please select "do not detect my modem...", then click Next.
2. Select install from disk, the following dialog box appear, please specify the path of the driver, e.g. D:\Drivers\winnt4, then click Next.
3. Varies type of modems will show in a dialog box, please select ("Topic 56000bps External Fax Voice Modem"), then click Next.

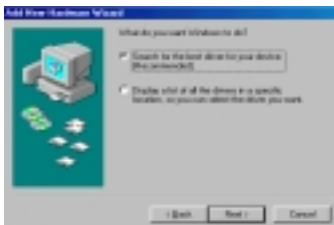
4. Please select the COM port which attach to your modem, then click Next
5. You have installed the modem successfully .
6. If you want to configure the setting of your modem, please select the modem item in the control panel, a dialog box with modem status will appear.

Installation Procedures for Windows 98 Dirver

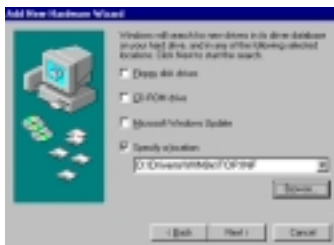
1. Once you have completed the hardware installation, power on your computer. When running Win 98, your system will detect a new device and the following message will appear. click Next .



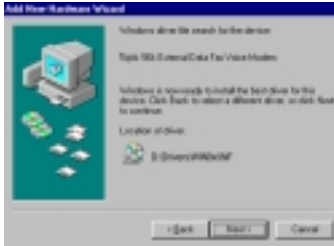
2. Select the "search for the best driver for your device (Recommended)" option, then click Next .



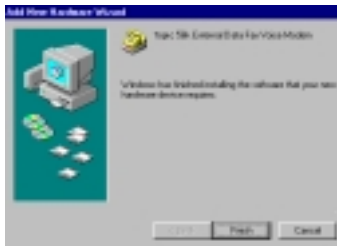
3. Place the disk containing the driver of Win 9X into your floppy disk drive. Specify the location of the modem driver, e.g. D:\Drivers\WIN9x\TOP.INF . click Next .



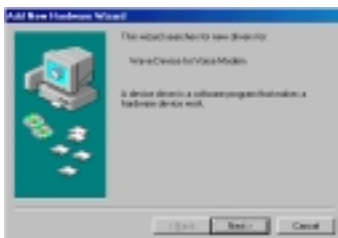
4. The following message will appear. click Next .



5. The installation has been completed. click Finish.



6. After the installation of Fax Voice Modem was completed, your system will detect Wave Device for Voice Modem and the following message will appear . click Next and then you could follow Step2 to Step5 to finish the installation .



Installation Procedures for Windows 2000 Driver

1. Once you have completed the hardware installation, power on your computer. When running Win 2000, your system will detect a new device. click Next.
2. Select the "search for the best driver for your device (Recommended)" option, then click Next.
3. Place the disk containing the driver of Win 2000 into your floppy disk drive. Select the "specify location", then click Next.
4. Browse the proper location of the driver path, e.g. D:\Drivers\WIN2000, then click Next.
5. Click Next.
6. Please read the Digital Signature, then click Yes.
7. To complete the installation, click Finish.

AT Command

Most people use the communication software programs to tell modems what to do. Therefore, you may not use the commands in this chapter. However, if you prefer to communicate with your modem directly, you can type the commands described below.

This chapter describes how to work in the terminal mode.

Note The disk contains detail of AT commands.
(file path:D :\ATCOMMAND.PDF)

Table of Contents

Chapter 1 Introduction

Your Modem	1
Features.....	2
System Requirements.....	2
Package Checklist	3

Chapter 2 Installations

Hardware Installation	4
Installation Procedures for Windows NT4.0 driver	5
Installation Procedures for Windows 98 driver	6
Installation of Procedures for Windows 2000 driver	10
AT Command	11

Introduction

The Voice/Fax/Data Modem connects your computer to Internet, and all kinds of BBS, and other popular Fax / Modems. This manual describes the features, procedures of installations, and AT command set... etc. of this modem.

Your modem...

There are indicator lights and connectors on the front and back side of this modem. Following is the meaning of these light and connectors for your reference:

1. External Front Panel

RD	:	Received Data indicator.
TD	:	Transmitted Data indicator.
CD	:	Carrier Detect indicator.
OH	:	Off Hook.
MR	:	Modem Ready.

2. External Rear Panel

PHONE	:	Phone jack.
LINE	:	Telephone line jack.
RS232	:	RS232 cable socket.
AC-IN	:	AC adapter input.
ON/OFF	:	Power switch.

Features

This modem supports the following communication standards. ITU-T is known as CCITT.

Data

- ITU-T V.90
- ITU-T V.34, V.32bis, V.32, V.22bis, V.22
- Bell 103 & 212A
- V.42bis & MNP 5 (Data compression)
- V.42 & MNP2-4 (Error correction)

Fax

- V.17 (14400bps FAX)
- V.29 (9600bps FAX)
- V.27ter (4800bps FAX)

Voice

- Voice/Audio mode

System Requirements

- Windows NT 4.0, Windows 95, Windows 98, Windows 2000.

Package Checklist

The package contains the following items:

- One fax modem
- One piece of phone cable
- One piece of RS-232 cable
- One CD
- One AC Adaptop
- The fax modem Quick Installation Guide

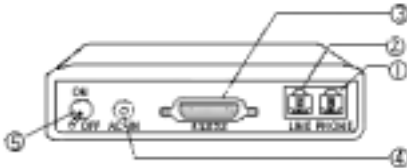
If any of these items are missing or damaged, please contact your dealer or sales representative for assistance.

Installations

This chapter describes how to install and power on you fax modem.

Note Before complete the hardware installation be aware not to power on the modem

Hardware Installation



1. Plug the male end of the **RS-232** cable into the connector marked **RS-232** (③) on the back of the modem.
2. Plug the other end of this cable into the serial port on the back of your computer.
3. (Be sure your modem is Power off) Plug the power cable into the **AC-IN** connector (④) on the back of the modem.
4. Plug the power adapter into a wall outlet.

5. Plug one end of the phone cable into the modem's **LINE** jack (②). Plug the other end into the phone outlet.
6. To use telephone and the modem on the same line, plug one end of the optional phone cable into the **PHONE** jack(①) on the modem; plug the other end into the phone. Lift the telephone handset and listen for a **DIALTONE** to check the connection.
7. Turn your modem on(⑤). The **MR** lights should light up.
8. Turn your computer on.

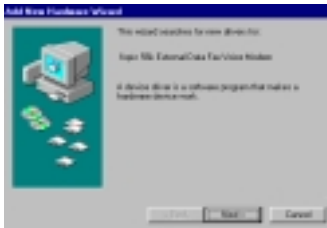
Installation Procedures for Windows NT4.0 Driver

1. When enter to the Winnt operating system, select the modem item in the control panel, the following dialog box will appear, please select "do not detect my modem...", then click Next.
2. Select install from disk, the following dialog box appear, please specify the path of the driver, e.g. D:\Drivers\winnt4, then click Next.
3. Varies type of modems will show in a dialog box, please select ("Topic 56000bps External Fax Voice Modem"), then click Next.

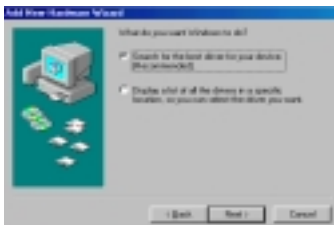
4. Please select the COM port which attach to your modem, then click Next
5. You have installed the modem successfully .
6. If you want to configure the setting of your modem, please select the modem item in the control panel, a dialog box with modem status will appear.

Installation Procedures for Windows 98 Dirver

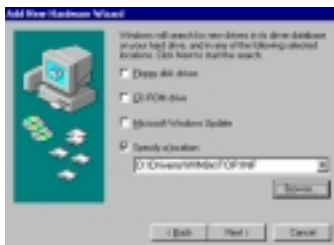
1. Once you have completed the hardware installation, power on your computer. When running Win 98, your system will detect a new device and the following message will appear. click Next .



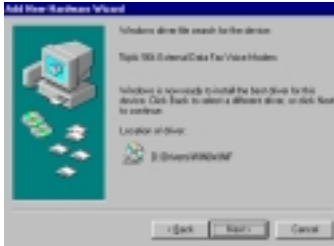
2. Select the "search for the best driver for your device (Recommended)" option, then click Next .



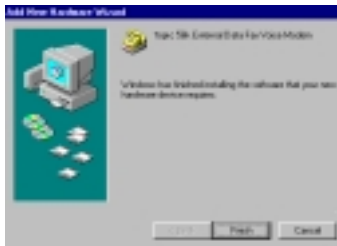
3. Place the disk containing the driver of Win 9X into your floppy disk drive. Specify the location of the modem driver, e.g. D:\Drivers\WIN9x\TOP.INF . click Next .



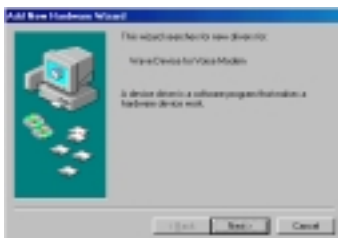
4. The following message will appear. click Next .



5. The installation has been completed. click Finish.



6. After the installation of Fax Voice Modem was completed, your system will detect Wave Device for Voice Modem and the following message will appear . click Next and then you could follow Step2 to Step5 to finish the installation .



Installation Procedures for Windows 2000 Driver

1. Once you have completed the hardware installation, power on your computer. When running Win 2000, your system will detect a new device. click Next.
2. Select the "search for the best driver for your device (Recommended)" option, then click Next.
3. Place the disk containing the driver of Win 2000 into your floppy disk drive. Select the "specify location", then click Next.
4. Browse the proper location of the driver path, e.g. D:\Drivers\WIN2000, then click Next.
5. Click Next.
6. Please read the Digital Signature, then click Yes.
7. To complete the installation, click Finish.

AT Command

Most people use the communication software programs to tell modems what to do. Therefore, you may not use the commands in this chapter. However, if you prefer to communicate with your modem directly, you can type the commands described below.

This chapter describes how to work in the terminal mode.

Note The disk contains detail of AT commands.
(file path:D :\ATCOMMAND.PDF)

Table of Contents

Chapter 1 Introduction

Your Modem	1
Features.....	2
System Requirements.....	2
Package Checklist	3

Chapter 2 Installations

Hardware Installation	4
Installation Procedures for Windows NT4.0 driver	5
Installation Procedures for Windows 98 driver	6
Installation of Procedures for Windows 2000 driver	10
AT Command	11

Introduction

The Voice/Fax/Data Modem connects your computer to Internet, and all kinds of BBS, and other popular Fax / Modems. This manual describes the features, procedures of installations, and AT command set... etc. of this modem.

Your modem...

There are indicator lights and connectors on the front and back side of this modem. Following is the meaning of these light and connectors for your reference:

1. External Front Panel

RD	:	Received Data indicator.
TD	:	Transmitted Data indicator.
CD	:	Carrier Detect indicator.
OH	:	Off Hook.
MR	:	Modem Ready.

2. External Rear Panel

PHONE	:	Phone jack.
LINE	:	Telephone line jack.
RS232	:	RS232 cable socket.
AC-IN	:	AC adapter input.
ON/OFF	:	Power switch.

Features

This modem supports the following communication standards. ITU-T is known as CCITT.

Data

- ITU-T V.90
- ITU-T V.34, V.32bis, V.32, V.22bis, V.22
- Bell 103 & 212A
- V.42bis & MNP 5 (Data compression)
- V.42 & MNP2-4 (Error correction)

Fax

- V.17 (14400bps FAX)
- V.29 (9600bps FAX)
- V.27ter (4800bps FAX)

Voice

- Voice/Audio mode

System Requirements

- Windows NT 4.0, Windows 95, Windows 98, Windows 2000.

Package Checklist

The package contains the following items:

- One fax modem
- One piece of phone cable
- One piece of RS-232 cable
- One CD
- One AC Adaptop
- The fax modem Quick Installation Guide

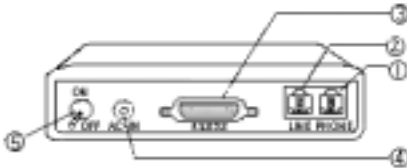
If any of these items are missing or damaged, please contact your dealer or sales representative for assistance.

Installations

This chapter describes how to install and power on you fax modem.

Note Before complete the hardware installation be aware not to power on the modem

Hardware Installation



1. Plug the male end of the **RS-232** cable into the connector marked **RS-232** (③) on the back of the modem.
2. Plug the other end of this cable into the serial port on the back of your computer.
3. (Be sure your modem is Power off) Plug the power cable into the **AC-IN** connector (④) on the back of the modem.
4. Plug the power adapter into a wall outlet.

5. Plug one end of the phone cable into the modem's **LINE** jack (②). Plug the other end into the phone outlet.
6. To use telephone and the modem on the same line, plug one end of the optional phone cable into the **PHONE** jack(①) on the modem; plug the other end into the phone. Lift the telephone handset and listen for a **DIALTONE** to check the connection.
7. Turn your modem on(⑤). The **MR** lights should light up.
8. Turn your computer on.

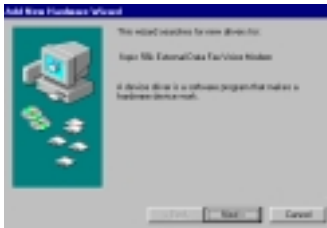
Installation Procedures for Windows NT4.0 Driver

1. When enter to the Winnt operating system, select the modem item in the control panel, the following dialog box will appear, please select "do not detect my modem...", then click Next.
2. Select install from disk, the following dialog box appear, please specify the path of the driver, e.g. D:\Drivers\winnt4, then click Next.
3. Varies type of modems will show in a dialog box, please select ("Topic 56000bps External Fax Voice Modem"), then click Next.

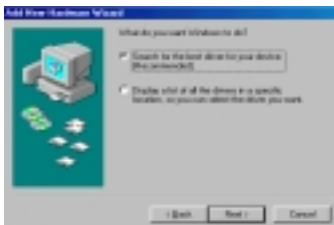
4. Please select the COM port which attach to your modem, then click Next
5. You have installed the modem successfully .
6. If you want to configure the setting of your modem, please select the modem item in the control panel, a dialog box with modem status will appear.

Installation Procedures for Windows 98 Dirver

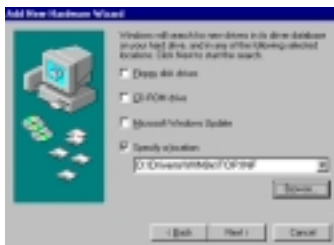
1. Once you have completed the hardware installation, power on your computer. When running Win 98, your system will detect a new device and the following message will appear. click Next .



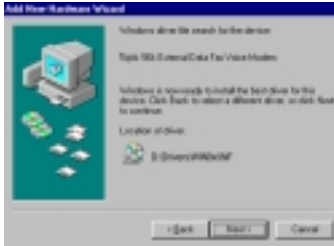
2. Select the "search for the best driver for your device (Recommended)" option, then click Next .



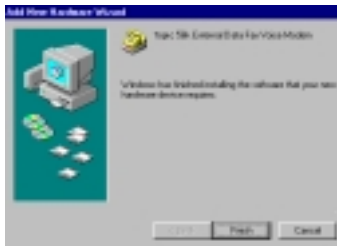
3. Place the disk containing the driver of Win 9X into your floppy disk drive. Specify the location of the modem driver, e.g. D:\Drivers\WIN9x\TOP.INF . click Next .



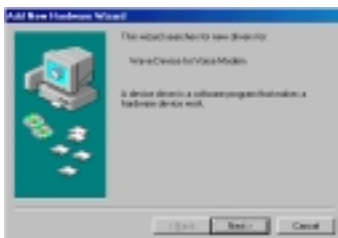
4. The following message will appear. click Next .



5. The installation has been completed. click Finish.



6. After the installation of Fax Voice Modem was completed, your system will detect Wave Device for Voice Modem and the following message will appear . click Next and then you could follow Step2 to Step5 to finish the installation .



Installation Procedures for Windows 2000 Driver

1. Once you have completed the hardware installation, power on your computer. When running Win 2000, your system will detect a new device. click Next.
2. Select the "search for the best driver for your device (Recommended)" option, then click Next.
3. Place the disk containing the driver of Win 2000 into your floppy disk drive. Select the "specify location", then click Next.
4. Browse the proper location of the driver path, e.g. D:\Drivers\WIN2000, then click Next.
5. Click Next.
6. Please read the Digital Signature, then click Yes.
7. To complete the installation, click Finish.

AT Command

Most people use the communication software programs to tell modems what to do. Therefore, you may not use the commands in this chapter. However, if you prefer to communicate with your modem directly, you can type the commands described below.

This chapter describes how to work in the terminal mode.

Note The disk contains detail of AT commands.
(file path:D :\ATCOMMAND.PDF)

Table of Contents

Introduction

- 1 Features
- 2 System Requirements
- 2 Package Checklist

Installations

- 3 Hardware Installation
- 4 Driver Installation
Procedures for Win NT 4.0
- 4 Driver Installation
Procedures for Win 98
- 7 Driver Installation
Procedures for Win 2000

Introduction

The Voice/Fax/Data PCI Modem connects your computer to Internet, all kinds of BBS, and other fax modems. This manual describes the features, installation procedures and AT commands.



Features

This modem supports the following communication standards. ITU-T is known as CCITT.

Data

- ITU-T V.90
- K56flex
- ITU-T V.34, V.32bis, V.32, V.22bis, V.22
- Bell 103 & 212A
- V.42bis & MNP 5 (Data Compression)
- V.42 & MNP2-4 (Error Correction)

Fax

- V.17 (14400bps FAX)
- V.29 (9600bps FAX)
- V.27ter (4800bps FAX)

Voice

- Voice/Audio mode (through Soundcard)
- Full-Duplex speakerphone (through Soundcard)

System Requirements

- Windows™ 95, Windows™ 98, Windows™ 2000, or Windows™ NT
- 200MHz Pentium™ CPU
- Sound Card
- 16MB RAM

Package Checklist

The package contains the following items:

- One fax modem card
- One piece of phone cable
- One CD
- The fax modem user's manual

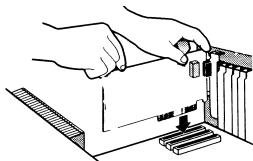
If any of these items are missing or damaged, please contact your dealer or sales representative for assistance.

Installations

This chapter describes how to install and power on you fax modem.

Hardware Installation

1. Make sure that your computer is switched off. Unplug the power cord from the wall socket. Also turn off all other peripherals you may have attached to your computer. Remove your computer cover.
2. Select a free PCI slot. Remove the cover from the slot. Keep the screw. You will be using it in the next step.
3. Carefully slide the internal modem into the chosen slot. Press firmly on the top of the modem to seat it. Fasten the modem to your system with the screw you removed in the previous step. Replace the computer's cover.



4. Plug one end of the phone cable into the Line jack on your fax modem. The other end of the phone cable should be connected directly to the phone outlet.

5. If you desire, you could connect your phone to the modem's Phone jack.
6. Turn on your computer.

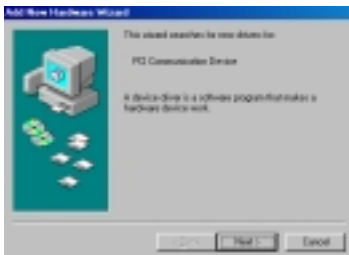
Driver Installation Procedures for Windows™ NT4.0

The Modem driver for Windows NT 4.0 is Data / Fax only, there is no speakerphone or TAM supported.

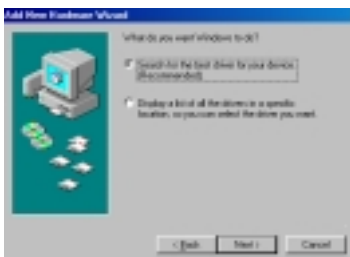
1. After entering to the Win NT 4.0 system, place the provided CD into the CD ROM drive.
2. Specify the location of the modem driver, e.g. E:\Driver\Winnt4\sm56set, then the installation will start to operate.
3. After the installation, restart your computer. You are now ready to use the modem.

Driver Installation Procedures for Windows™ 98

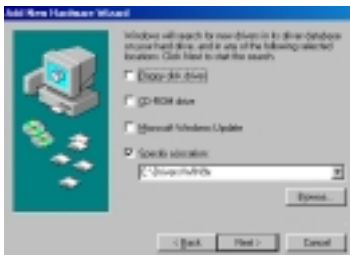
1. Once you have completed the hardware installation, power on your computer. When running Win 98, your system will detect a new device and the following message will appear. Click **Next**.



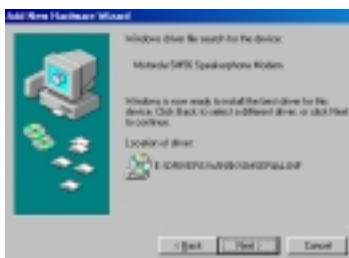
2. Select the **Search for the best driver for your device (Recommended)** option, then click **Next**.



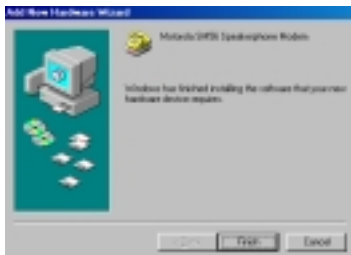
3. Place the CD containing driver for Win 9X into your CD ROM drive. Select the Specify a location option, then click Browse. Specify the path of the driver, e.g., E:\Drivers\WIN9x. Click **Next**.



4. The following message will appear. Click **Next** and the installation process will begin.



5. To complete the installation, click **Finish**.



Driver Installation Procedures for Windows™ 2000

1. Once you have completed the hardware installation, power on your computer. When running Win 2000, your system will detect a new device and appear a message saying to help you install a device driver for a hardware device. Click **Next**.

2. The Found New Hardware Wizard will ask you what to do. Select the **Search for a suitable driver for my device (recommended)** option, and click **Next**.

3. The Found New Hardware will ask you where to search for driver files, select the **CD-ROM drives** option, then click **Next**.

4. The Found New Hardware Wizard will tell you Windows found a driver for PCI Simple Communication Controller. To install the driver that Windows found, click **Next**, then the installation will start to operate.

5. After the installation, restart your computer. You are now ready to use the modem.