

Fax Modem

Quick Installation Guide

Ver. A 3030-0005

Table of Contents

Chapter 1 Introduction

Your Modem	1
Features.....	2
System Requirements.....	2
Package Checklist	3

Chapter 2 Installations

Hardware Installation	4
Installation Procedures for Windows NT4.0	5
Installation Procedures for Windows 98	6
Installation of Communication Software	9
Installation Procedures for Windows 2000	10
AT Commands.....	11

Introduction

The Voice/Fax/Data Modem connects your computer to Internet, and all kinds of BBS, and other popular Fax / Modems. This manual describes the features, procedures of installations, and AT command set... etc. of this modem.

Your modem...

There are indicator lights and connectors on the front and back side of this modem. Following is the meaning of these light and connectors for your reference:

1. External Front Panel

RD	:	Received Data indicator.
TD	:	Transmitted Data indicator.
CD	:	Carrier Detect indicator.
OH	:	Off Hook.
MR	:	Modem Ready.

2. External Rear Panel

PHONE	:	Phone jack.
LINE	:	Telephone line jack.
RS232	:	RS232 cable socket.
AC-IN	:	AC adapter input.
ON/OFF	:	Power switch.

Features

This modem supports the following communication standards. ITU-T is known as CCITT.

Data

- ITU-T V.90
- ITU-T V.34, V.32bis, V.32, V.22bis, V.22
- Bell 103 & 212A
- V.42bis & MNP 5 (Data compression)
- V.42 & MNP2-4 (Error correction)

Fax

- V.17 (14400bps FAX)
- V.29 (9600bps FAX)
- V.27ter (4800bps FAX)

Voice

- Voice/Audio mode

System Requirements

- Windows NT 4.0, Windows 95, Windows 98, Windows 2000.



Package Checklist

The package contains the following items:

- One fax modem
- One piece of phone cable
- One piece of RS-232 cable
- One Disk
- One AC Adaptop
- The fax modem Quick Installation Guide

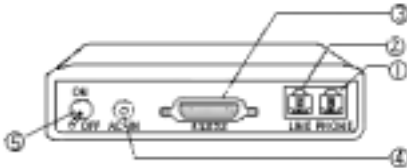
If any of these items are missing or damaged, please contact your dealer or sales representative for assistance.

Installations

This chapter describes how to install and power on you fax modem.

Note Before complete the hardware installation be aware not to power on the modem

Hardware Installation



1. Plug the male end of the **RS-232** cable into the connector marked **RS-232** (③) on the back of the modem.
2. Plug the other end of this cable into the serial port on the back of your computer.
3. (Be sure your modem is Power off) Plug the power cable into the **AC-IN** connector (④) on the back of the modem.
4. Plug the power adapter into a wall outlet.



5. Plug one end of the phone cable into the modem's **LINE** jack (②). Plug the other end into the phone outlet.
6. To use telephone and the modem on the same line, plug one end of the optional phone cable into the **PHONE** jack (①) on the modem; plug the other end into the phone. Lift the telephone handset and listen for a **DIALTONE** to check the connection.
7. Turn your modem on (⑤). The **MR** lights should light up.
8. Turn your computer on.

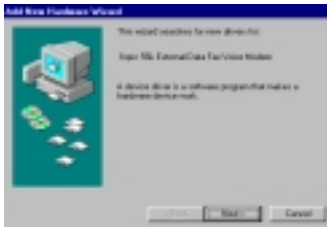
Installation Procedures for Windows NT4.0

1. When enter to the Winnt operating system, select the modem item in the control panel, the following dialog box will appear, please select "do not detect my modem...", then click Next.
2. Select install from disk, the following dialog box appear, please specify the path of the driver, (a:\winnt), then click Next.
3. Varies type of modems will show in a dialog box, please select ("Topic 56000bps External Fax Voice Modem") , then click Next.

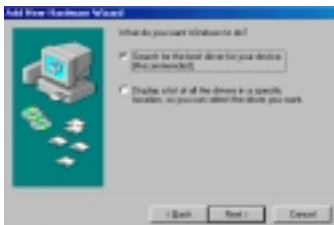
4. Please select the COM port which attach to your modem, then click Next
5. You have installed the modem successfully .
6. If you want to configure the setting of your modem, please select the modem item in the control panel, a dialog box with modem status will appear.

Installation Procedures for Windows 98

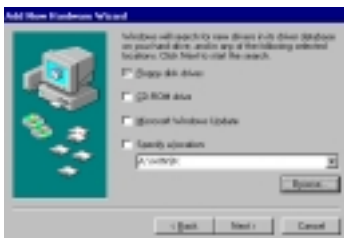
1. Once you have completed the hardware installation, power on your computer. When running Win 98, your system will detect a new device and the following message will appear. click Next .



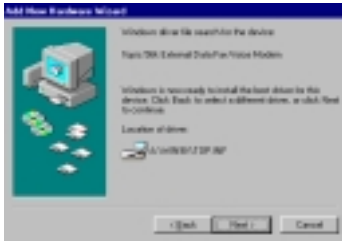
2. Select the “search for the best driver for your device (Recommended)” option, then click Next .



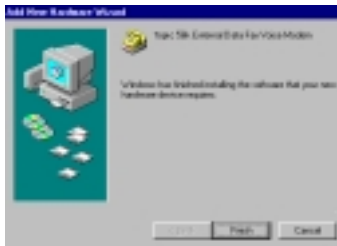
3. Place the disk containing the driver of Win 9X into your floppy disk drive. Specify the location of the modem driver, e.g., A:\WIN9X . click Next .



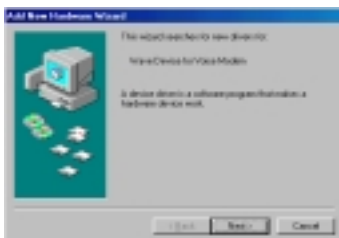
4. The following message will appear. click Next .



5. The installation has been completed. click Finish.



6. After the installation of Fax Voice Modem was completed, your system will detect Wave Device for Voice Modem and the following message will appear . click Next and then you could follow Step2 to Step5 to finish the installation .



Installation Procedures for Windows 2000

1. Once you have completed the hardware installation, power on your computer. When running Win 2000, your system will detect a new device. click Next.
2. Select the "search for the best driver for your device (Recommended) "option, then click Next.
3. Place the disk containing the driver of Win 2000 into your floppy disk drive. Select the "specify location", then click Next.
4. Browse the proper location of the driver path, A:\WIN2000, then click Next.
5. Click Next.
6. Please read the Digital Signature, then click Yes.
7. To complete the installation, click Finish.



AT Commands

Most people use the communication software programs to tell modems what to do. Therefore, you may not use the commands in this chapter. However, if you prefer to communicate with your modem directly, you can type the commands described below.

This chapter describes how to work in the terminal mode.

Note The disk contains detail of AT commands.
(file path: A:\ATCOMMAND.PDF)