

Fax Modem

Quick Installation Guide

Ver. A 3523-0005

FCC Compliance

To comply with the applicable sections of FCC Rules and Regulations, Parts 68 and 15, please follow these instructions:

- Do not connect your modem to a party line or to a coin-operated telephone.
- If your modem should cause a problem on the telephone line, it should be disconnected from the line until it can be determined whether the modem or another device on the phone line caused the problem.
- Only the manufacturer can make repairs to the modem. Other repair methods will void your warranty.
- If you have an external modem, use a properly constructed shielded cable to connect it to your computer.
- If your telephone company asks for the following information, please make it available:
 - Modem manufacturer
 - Model of modem
 - FCC Registration Number
 - Ringer Equivalence Number (REN)

FCC Part 15

Operation is subject to the following two conditions:

1. This device may not cause harmful interference.
2. This device must accept any interference received including interference that may cause undesired operation.

This equipment has been tested and found to comply with the limits for a Class B digital device, pursuant to Part 15 of the FCC Rules. These limits are designed to provide reasonable protection against harmful interference when the equipment is operated in a residential installation. This equipment generates, uses, and can radiate frequency energy and if not installed and used in accordance with the instructions, may cause harmful interference to radio communications. However, there is no guarantee that the interference to radio or television reception, which can be determined by turning the equipment off and on, the user is encouraged to try to correct the interference by one or more of the following measures:

- Reorient or relocate the receiving antenna.
- Increase the separation between the equipment and receiver.

- Connect the equipment into an outlet on a circuit different from that to which the receiver is connected.
- Consult the dealer or an experienced radio/TV technician for help.



Caution

Any changes or modifications not expressly approved by the grantee of this device could void the user authority to operate the equipment.

FCC Part 68 Notice

This equipment complies with Part 68 of the FCC rules. On the base of this unit is a label that contains, among other information, the FCC registration number and Ringer Equivalence Number (REN) for this equipment. If requested, this information must be given to your telephone company.

The REN is used to determine the quantity of devices you may connect to your telephone line and still have all of those devices ring when your number is called. In most, but not all areas, the sum of the RENs of all devices should not exceed five (5.0). To be certain of the number of devices you may connect to your line, as determined by the total RENs, you should call your local telephone company to determine the maximum RENs for your calling area.

If the telephone company suspects a problem with your telephone line is related to an add-on electronic device, such as your modem, they have the right to temporarily suspend your service. It is your responsibility to remove from the telephone line any malfunctioning electronic communications equipment to avoid damage to the telephone system.

If your equipment causes harm to the telephone network, the telephone company may discontinue your service temporarily. If possible, they will notify you in advance. But if advance notice is not practical, you will be notified as soon as possible. You will be informed of your right to file a complaint with the FCC. Your telephone company may make changes to its facilities, equipment, operations, or procedures that could affect the proper functioning of your equipment. If they do, you will be notified in advance to give you an opportunity to maintain uninterrupted telephone service.

The telephone company may ask that you disconnect this equipment from the network until the problem has been corrected or until you are sure that the equipment is not malfunctioning.

This equipment may not be used on coin service provided by the telephone company. Connection to party lines is subjected to state tariffs.

If you experience trouble with this telephone equipment, please contact your place of purchase for information on obtaining service or repairs.

Table of Contents

Chapter 1 Introduction

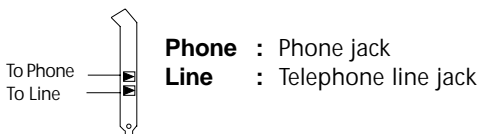
Features	1
System Requirements	2
Package Checklist	2

Chapter 2 Installation

Hardware Installation	3
Installation Procedures for Windows NT 4.0	4
Installation Procedures for Windows 98	5
Installation Procedures for Windows 2000	7
AT Commands	8

Introduction

The Voice/Fax/Data PCI Modem connects your computer to Internet, all kinds of BBS, and other fax modems. This manual describes the features, installation procedures and AT commands.



Features

This modem supports the following communication standards. ITU-T is known as CCITT.

Data

- ITU-T V.90.
- ITU-T V.34, V.32bis, V.32, V.22bis, V.21, V.22.
- Bell 103 & 212A.
- V.42bis & MNP 5 (Data compression).
- V.42 & MNP2-4 (Error correction).

Fax

- V.17 (14400bps FAX).
- V.29 (9600bps FAX).
- V.27ter (4800bps FAX).

Voice

- Voice/Audio mode.

System Requirements

- Windows NT 4.0, Windows 95, Windows 98, Windows 2000.

Package Checklist

The package contains the following items:

- One fax modem.
- One piece of phone cable.
- One CD.
- The fax modem Quick Installation Guide.

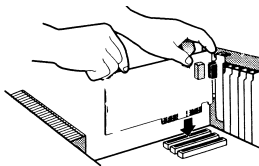
If any of these items is missing or damaged, please contact your dealer or sales representative for assistance.

Installations

This chapter describes how to install and power on your fax modem.

Hardware Installation

1. Make sure that your computer is switched off. Unplug the power cord from the wall socket. Also turn off all other peripherals you may have attached to your computer.
2. Select a free PCI slot. Remove the cover from the slot. Keep the screw. You will be using it in the next step.
3. Carefully slide the internal modem into the chosen slot. Press firmly on the top of the modem to seat it. Fasten the modem to your system with the screw you removed in the previous step. Replace the computer's cover.



4. Plug one end of the phone cable into the line jack on your fax modem. The other end of the phone cable should be connected directly to the phone outlet.

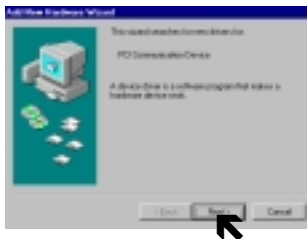
5. If you desire, you could connect your phone to the modem's phone jack.
6. Turn on your computer.

Installation Procedures for Windows NT4.0

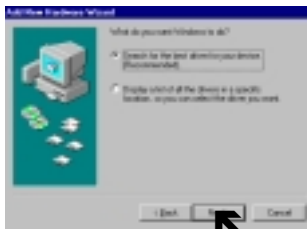
1. Please put the CD into your CD-ROM, then select Driver→WINNT4, click Setup.
A dialog box with ESS Configuration appear, please select the proper Com port, then click OK.
2. Please click OK.
3. Select the modem item from the Control Panel, then click *Do not detect my modem, I will Pick up from the list*.
4. Select install from disk, the following dialog box appear, please specify the path of the driver, (D:\Driver\WINNT4), then click Next.
5. Various type of modems will show in a dialog box, please select (ESS ESS56H_DI Data Fax Modem), then click Next.
6. Please select the COM port Which attach to your modem, then click Next.
7. You have installed the modem successfully.
8. If you want to configure the setting of your modem, please select the modem item in the control panel, a dialog box with modem status will appear.

Installation Procedures for Windows 98

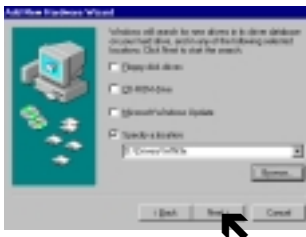
1. Once you have completed the hardware installation, power on your computer. When running Win98, your system will detect a new device and the following message will appear. click Next.



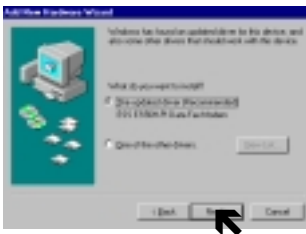
2. Select the " Search for the best driver for your device (Recommended) " option, then click Next.



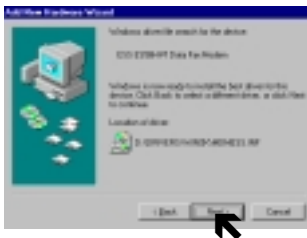
3. Place the CD containing driver for Win98 into your CD ROM drive. Specify the location of the modem driver, e.g., D:\Drivers\WIN9X. then click Next.



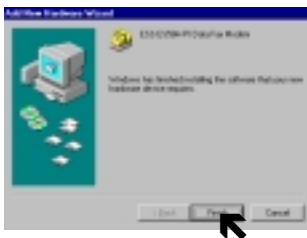
4. Click Next.



5. Windows Will locate your driver. click Next.



6. The installation has been completed click finish.



Installation Procedures for Windows 2000

1. Once you have completed the hardware installation, power on your computer. When running WIN2000, your system will detect a new device. click Next.
2. Select the "Search for a suitable driver for my your device" (recommended) option, then click Next.

3. Place the CD containing driver for Win 2000 into your CD ROM drive. Select the "specify a location", then click Next.
4. Browse the proper location of the driver path, e.g., D:\Driver\WIN2000, then click Next.
5. Click Next.
6. Please read the Digital Signature, then click Yes.
7. To complete the installation, click Finish.

Commands

Most people use the communication software programs to tell modems what to do. Therefore, you may not use the commands in this chapter. However, if you prefer to communicate with your modem directly, you can type the commands described below.

This chapter describes how to work in the terminal mode.

Note

The CD contains detail of AT commands (File path:D:\AT_Command.PDF)